

Analysis of Jackson County Springs at Lynchburg, Miss / by J. Lawrence Smith.

Contributors

Smith, J. Lawrence 1818-1883.
National Library of Medicine (U.S.)

Publication/Creation

New Orleans : Printed at "Magic Press" office, 1852.

Persistent URL

<https://wellcomecollection.org/works/ezn5z9b2>

License and attribution

This material has been provided by This material has been provided by the National Library of Medicine (U.S.), through the Medical Heritage Library. The original may be consulted at the National Library of Medicine (U.S.) where the originals may be consulted.

This work has been identified as being free of known restrictions under copyright law, including all related and neighbouring rights and is being made available under the Creative Commons, Public Domain Mark.

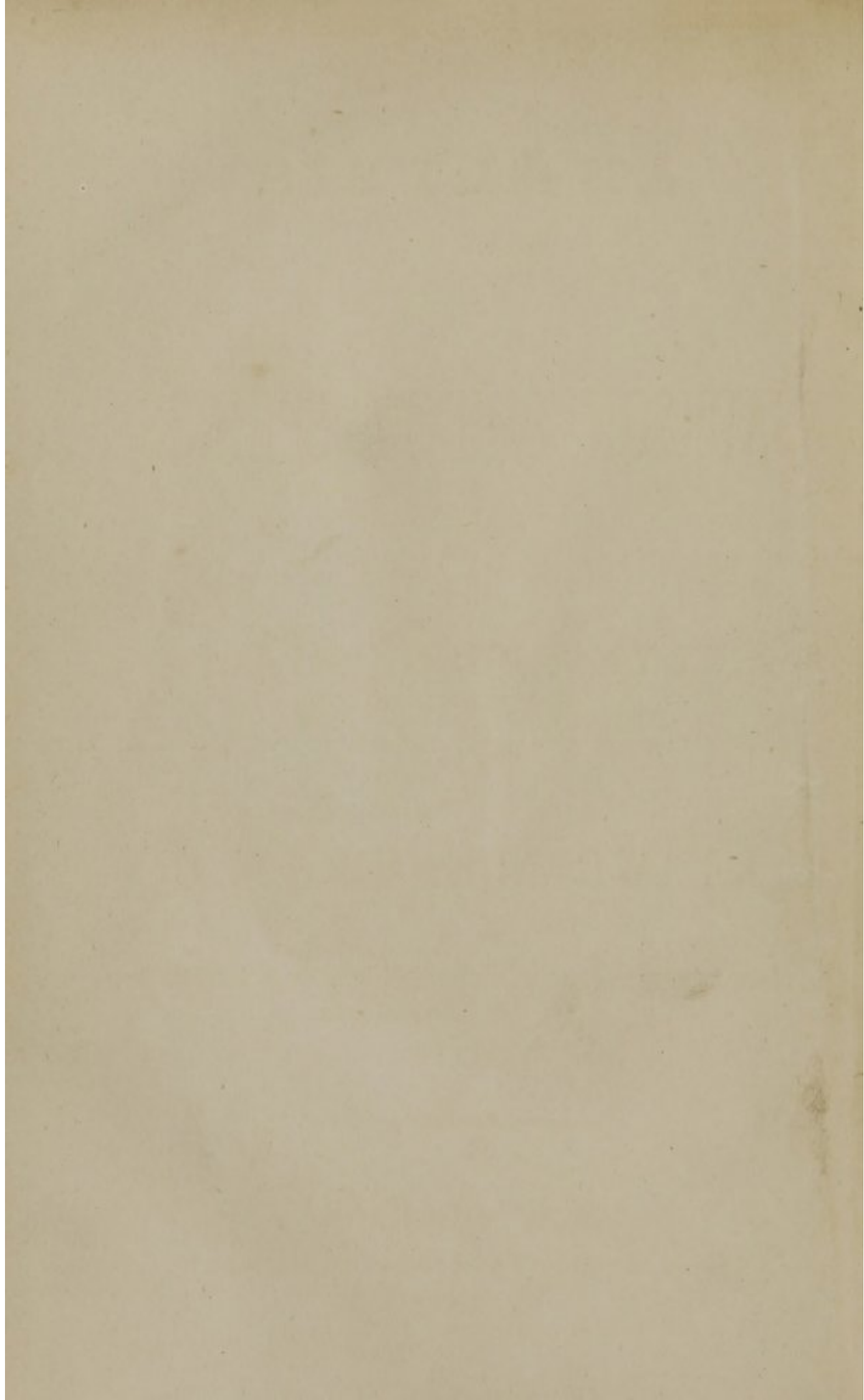
You can copy, modify, distribute and perform the work, even for commercial purposes, without asking permission.



Wellcome Collection
183 Euston Road
London NW1 2BE UK
T +44 (0)20 7611 8722
E library@wellcomecollection.org
<https://wellcomecollection.org>

WBI
5652a
1852





ANALYSIS

OF

JACKSON COUNTY SPRINGS,

AT

LYNCHBURG, MISS.,

BY

J. LAWRENCE SMITH, M. D.,

PROFESSOR OF CHEMISTRY IN THE UNIVERSITY OF LOUISIANA.

NEW ORLEANS :

Printed at "Magic Press" Office, 89 Magazine st-
1852.

Wine Gallon U.S. 58,329 grs

Pound Troy. 5760 grs

W B I

S 652a

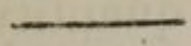
1852

File # 3471, no. 1

Litmus - at the spring -
Try it also after boiling -
Some water - turbid?
Dr F's Hydrometer
Infus. Gallæ for iron

JACKSON COUNTY SPRINGS,

AT LYNCHBURG, MISS.



THE Springs are located among the pine hills, five miles from the town of Biloxi, and about a half mile from the eastern shore of Biloxi Bay, near Fort Bayou ; which takes its name from a fort built there two centuries ago, by the French, who were under the impression that the mouth of Biloxi Bay was the mouth of the Mississippi River ; the bluff on this shore presents a beautiful appearance, is much higher than on the other shore of the Bay, and the land is more elevated and rolling than any land on the sea coast between this place and the city of New Orleans.

The original proprietor, Mr. Lynch, in excavating the earth for the foundation of a mill, discovered these springs ; from which flowed water offensive to the smell and naus-

eous to the taste: for some time little attention was paid to the medicinal qualities of the water, until one of the proprietors, Mr. Young, directed the attention of the writer of this notice to it, some time in the latter part of the year A. D. 1851. Upon examination I discovered a large quantity of Protoxide of Iron and Sulphuretted Hydrogen, and pronounced it superior to the Bladen water of Alabama, while the water was similar in its effects.

The conviction of its great medicinal virtues, induced me to suggest to the proprietor the expediency of having it analysed; and at his request I obtained the valuable services of that celebrated Chemist, Dr. J. Lawrence Smith, Professor of Chemistry in the University of Louisiana, in order to have its qualities tested by one whose qualifications would guarantee to the world a true and correct analysis.

The analysis, quantitative and qualitative, prepared by him is as follows:

Sea water	1.0269	to	1.0285	=
			1.00082	
Springs				
			<hr/>	
			.02768	

Sea about 3 per cent solid

ANALYSIS OF JACKSON COUNTY SPRINGS

Lynchburg, Eastern Shore, Biloxi Bay.

Water colorless even when kept for a length of time in bottles, provided the bottles be well corked; so soon as opened the water begins to blacken from a deposit of Sulphuret of Iron;—the odour of the water is that of Sulphuretted Hydrogen, which the water contains in considerable quantity:—the taste—that known to belong to this class of waters;—Specific Gravity 1,00082.

Gaseous contents in one gallon:

Carbonic Acid, 4,632 grains.

Sulphuretted Hydrogen, 0,481 "

Solid contents in on gallon: 5.113

5.113

Chloride of Sodium, 47,770 grains,

do. of Calcium, 3,882 "

do. of Magnesium, 4,989 "

Protoxide of Iron, 4,712 "

61.353

Iodine, a strong trace, — 61.353

Organic Matter, trace, —

66.466

Chloride of Potassium, trace, —

Alumina, trace.

4) 66.466
16.614 solid matter in a

gint.

Peroz from 1.178 gr in

The Iron is doubtless in combination with both the Sulphuretted and Carbonic acid, Gases the excess of Carbonic acid holding both these combinations in solution.

The medicinal virtue of these waters is to be looked for more particularly in the oxide of Iron, and Sulphuretted Hydrogen, both of which exists in notable quantities; and it is therefore apparent that many chronic diseases might be cured, or receive important alleviation from these waters,—as a bath, it could be applied with much advantage.

J. LAWRENCE SMITH,

Professor of Chemisiry in the Univ. La.

One distinguishing feature of this water, and which must perpetually render it superior to either Bladen Springs, or Cooper's Well, is that the protoxide of Iron is held in solution by the great quantity of Carbonic acid gass it contains.

The proximity of these Springs to the city of New Orleans, and the city of Mobile, being nearly equi-distant from both places, constitutes one of its advantages ; and must, from its eligibility of location, cause it to be patronized by the lovers of freedom, from the foul reeking streets of southern cities, during the summer months.

A Spring of this nature, combining ingredients which will subserve to produce and preserve health, have long been a great "desideratum" to the good inhabitants of the city of New Orleans ; and now when found, will doubtless induce the seekers after health, pleasure and happiness, to fly from the dull precincts of City-life during the "dog-days," and in the "otium cum dignitate" of the country breathe an air health-inspiring and free.

Had the citizens of this great city met in Convention, and duly delegated some of its citizens to select the site of a watering place, adapted by its locality to the wants of New Orleans, one better located could not have been found, even had heaven vouchsafed to them, as to one of old, the power to force the healing stream to flow.

The experience of the past few years has lamentably attested the fact that, the watering places of the north constitute no very pleasing abode for the sons and the daughters of the south, and in duty as in pride they are bound to flee them, and seek within the borders of their own sunny clime, a summer shelter from summer heat and fevers.

The visitor here, the resident of New Orleans or Mobile, feels, while enjoying the benefits resulting from abstraction from business and the drinking the waters, that, upon any unexpected emergency, a few hours sail will bring him again within the precinct of his counting room; this, to a business man, is a "desideratum," and one that cannot be enjoyed at the distant waters of the North.

The pilgrim to these waters can take a Steamboat, land at Biloxi, there take a small boat and cross the bay, a distance of three miles, and be within a short distance of the Springs.

These Springs are quite "in the cradle"

so far as regards improvements; and are at present enclosed from the world by woods: some improvements however, have been made, and accommodations sufficient for some twenty invalids have been effected; and their presence at the Spring would be very acceptable.

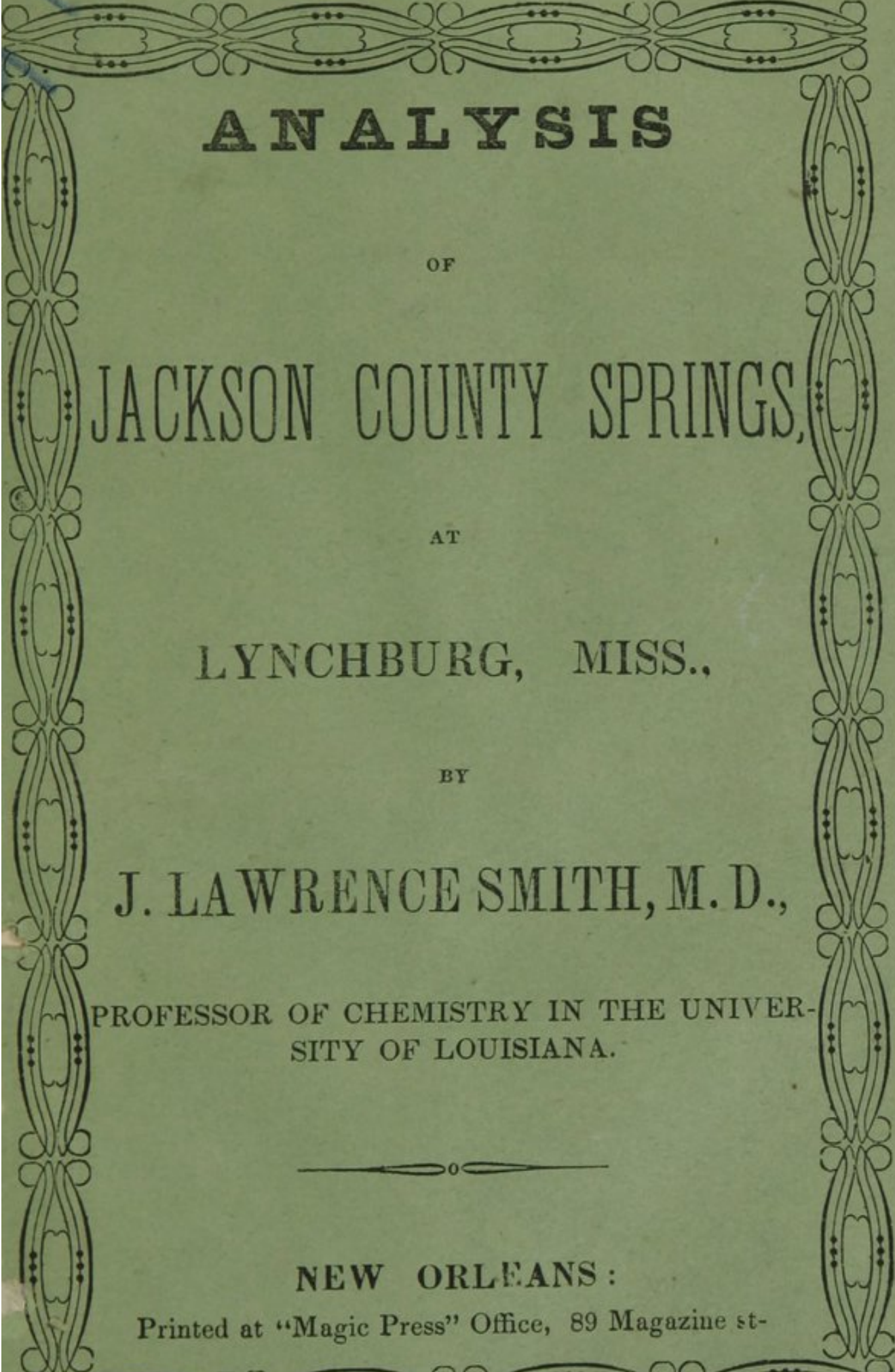
Already a fine wharf and pier are in process of erection, and will be completed the ensuing fall, so that steamboats can land their passengers within a short distance of the Springs. A fine low-pressure Steamer now in process of construction by Messrs. R. Geddes & Co., will soon ply regularly between New Orleans and the Springs; she will be in the trade early in the fall, and will lay at the new wharf.

The analysis prepared by Dr. Smith, has, by the writer of this notice, been exhibited to many of the Medical faculty of New Orleans, and among others, to Dr. Warren Stone, who all coincide in the opinion that the water of these Springs is highly medicinal, and recommend invalids to imbibe with it, health and vigour.

A number of patients have already been cured, and others greatly benefited by its use.

The proprietors of property on the sea coast, intend to lay out a town, which in process of time, will rival any of the towns on the route between New Orleans and Mobile; and houses will during the ensuing season, be erected, in order to insure to families the proper necessary accommodations.

NEW ORLEANS, }
 July 15, 1852. }



ANALYSIS

OF

JACKSON COUNTY SPRINGS,

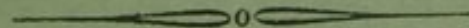
AT

LYNCHBURG, MISS.,

BY

J. LAWRENCE SMITH, M. D.,

PROFESSOR OF CHEMISTRY IN THE UNIVER-
SITY OF LOUISIANA.



NEW ORLEANS :

Printed at "Magic Press" Office, 89 Magazine st-

