

Design no. 1 for a marine hospital on the western waters to accommodate 100 patients.

Contributors

Mills, Robert, 1781-1855.
National Library of Medicine (U.S.)

Publication/Creation

Washington City : P. Haas' Lithy, [1837?]

Persistent URL

<https://wellcomecollection.org/works/bdr4tsa8>

License and attribution

This material has been provided by This material has been provided by the National Library of Medicine (U.S.), through the Medical Heritage Library. The original may be consulted at the National Library of Medicine (U.S.) where the originals may be consulted.

This work has been identified as being free of known restrictions under copyright law, including all related and neighbouring rights and is being made available under the Creative Commons, Public Domain Mark.

You can copy, modify, distribute and perform the work, even for commercial purposes, without asking permission.



Wellcome Collection
183 Euston Road
London NW1 2BE UK
T +44 (0)20 7611 8722
E library@wellcomecollection.org
<https://wellcomecollection.org>

WX
M657d
1837

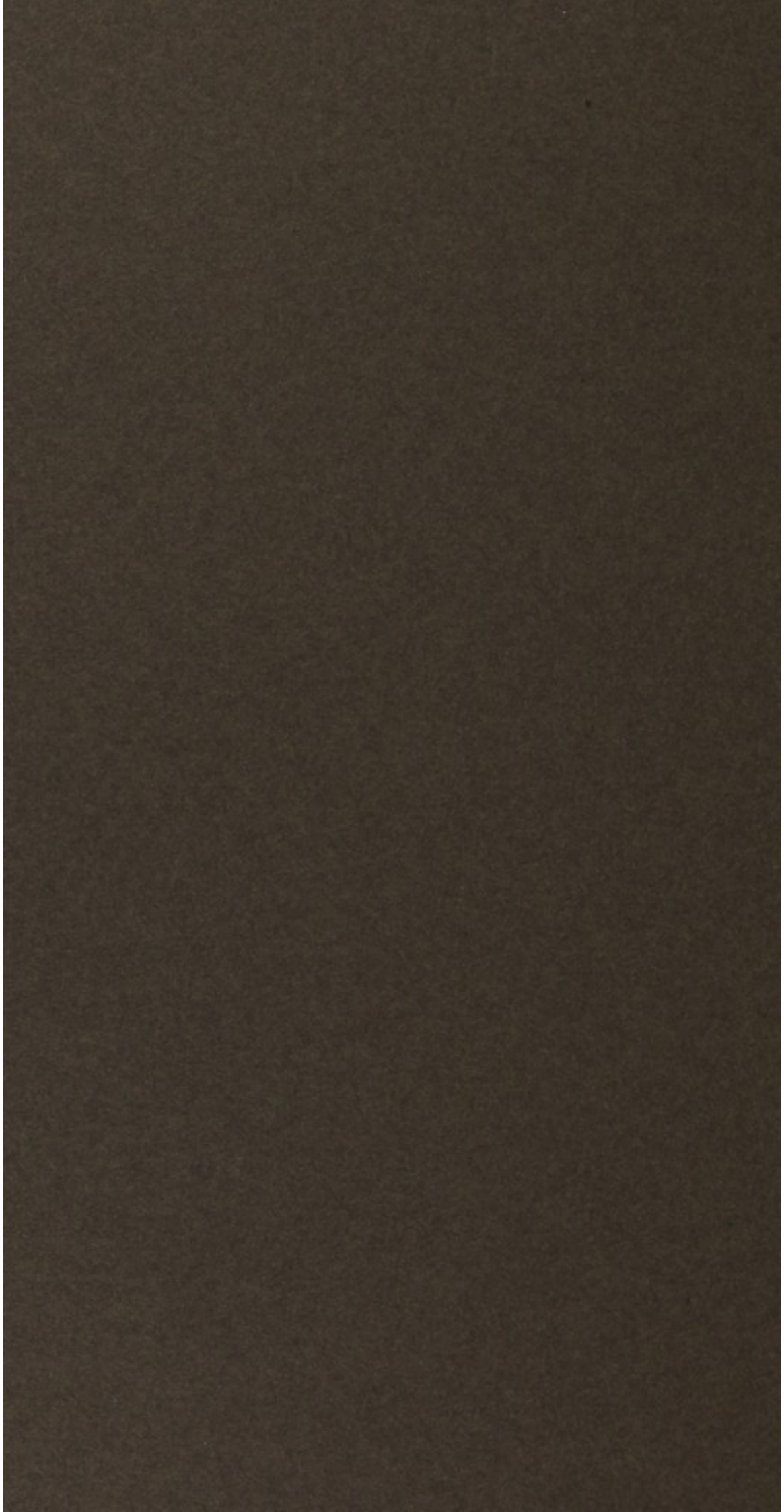
MON MED

c.2

NATIONAL LIBRARY OF MEDICINE

DOCUMENT SECTION

WITHDRAWN
from
LIBRARY
NATIONAL INSTITUTES OF HEALTH



420

J. W. P. ...

LIBRARY
U. S. PUBLIC HEALTH SERVICE
WASHINGTON, D. C.

DESIGN

N^o. 1.

FOR A

MARINE HOSPITAL

ON THE

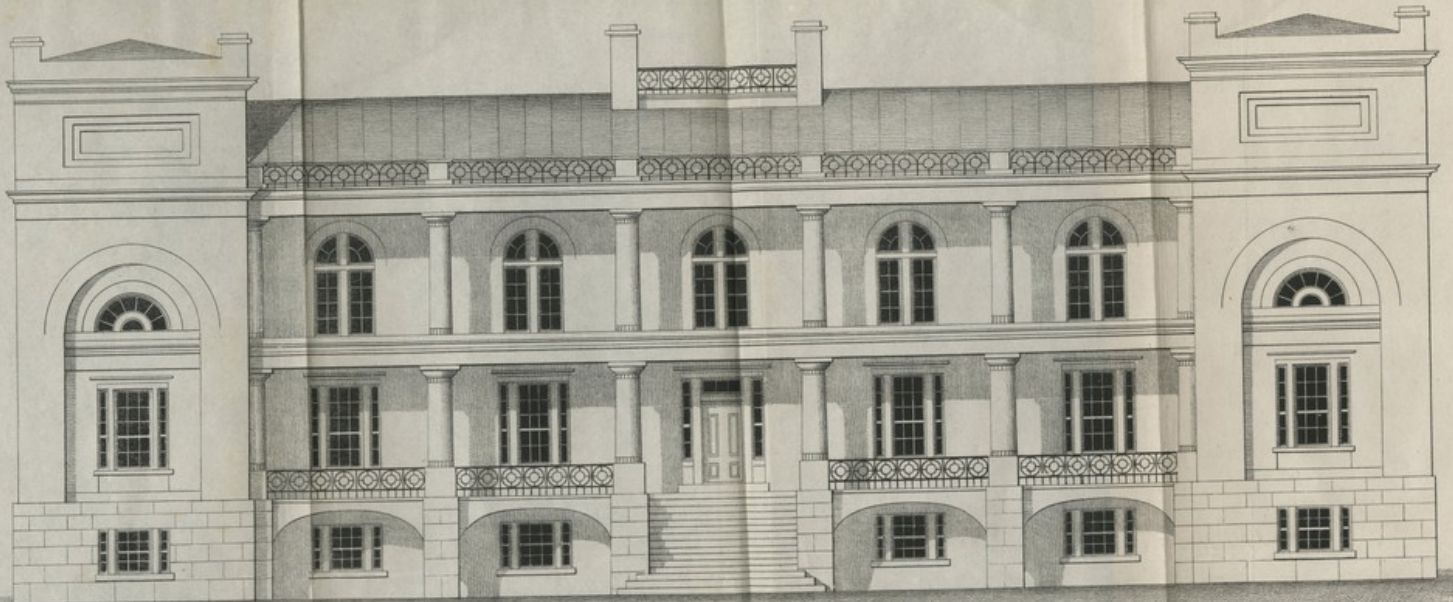
WESTERN WATERS

to accommodate

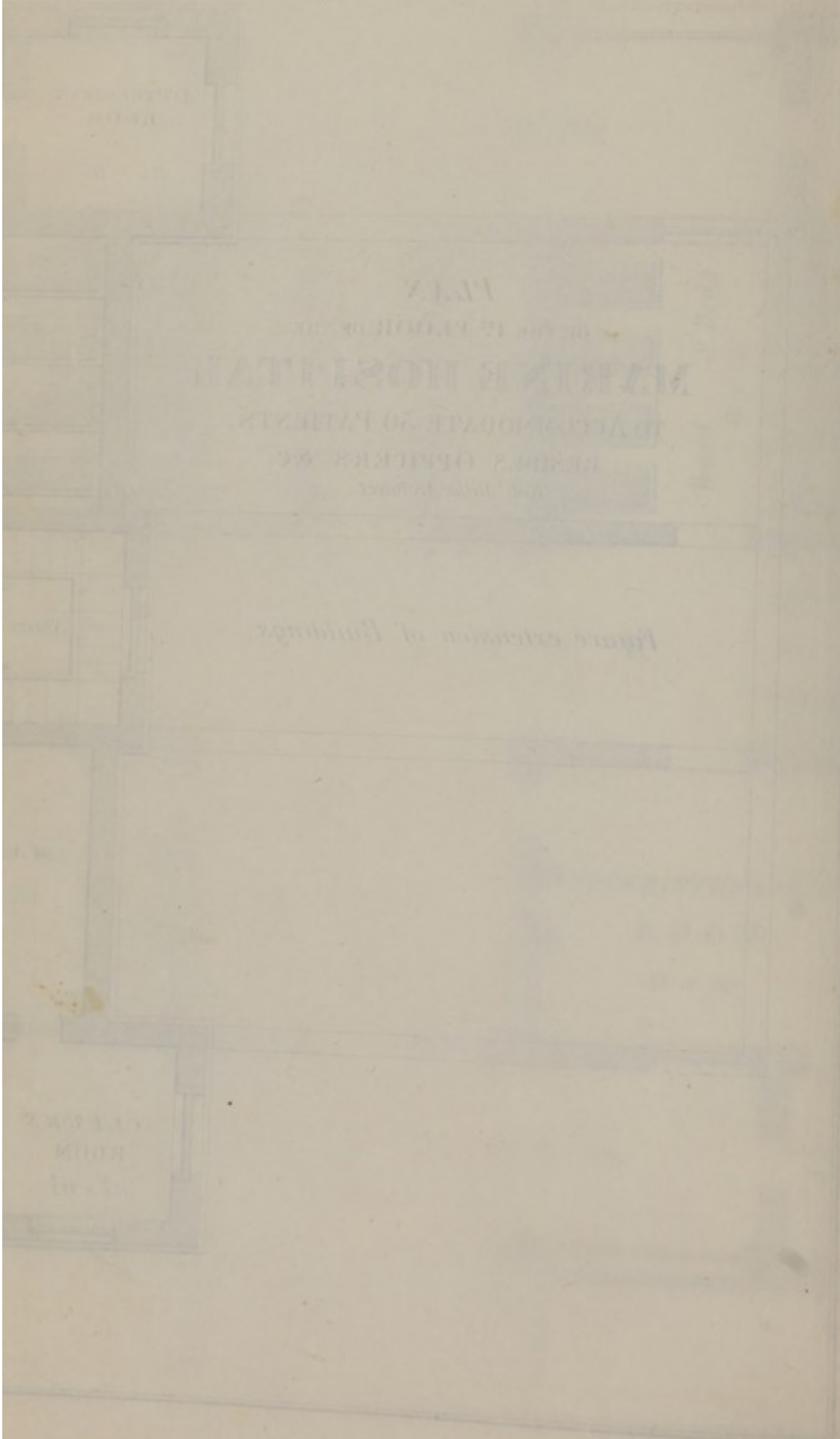
100

PATIENTS.

Dr. J. W. ...



FACADES OF MARINE HOSPITAL TO ACCOMMODATE 100 PATIENTS BESIDES OFFICERS ROOMS &C.
Rob^t Mills, Architect.

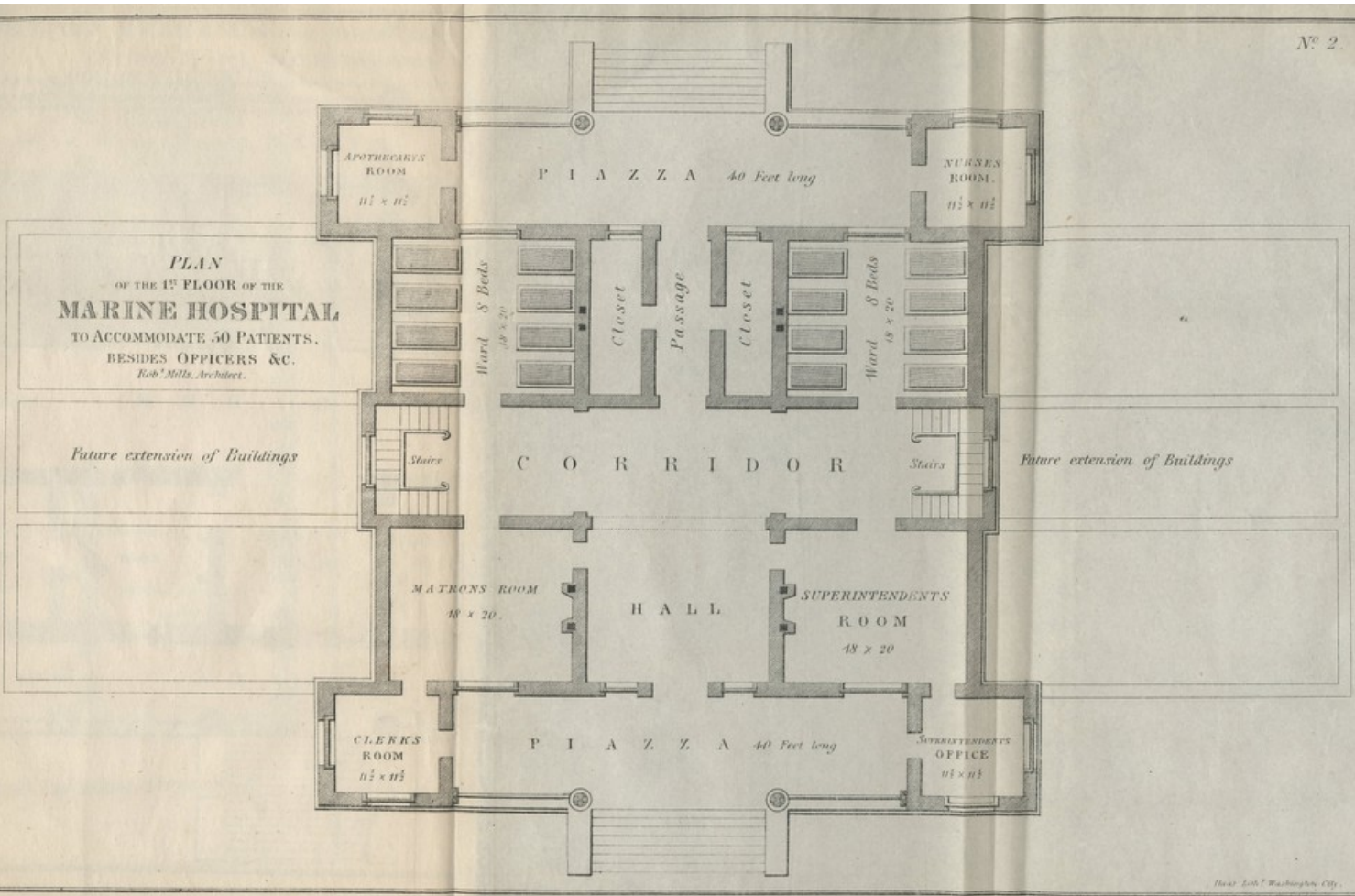


PLAN
OF THE FLOOR OF THE
MANSION HOUSE
IN ADJUNCTION TO THE
BRIDGE OF THE
AND THE

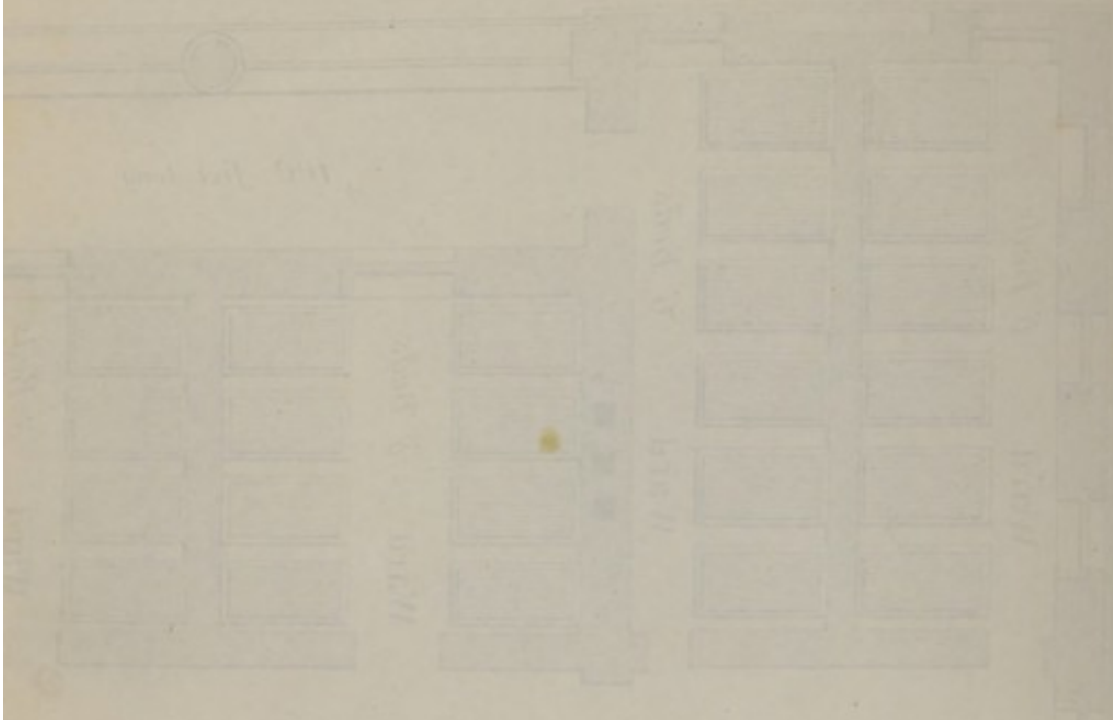
Plan of extension of buildings

PLAN
OF THE
FLOOR

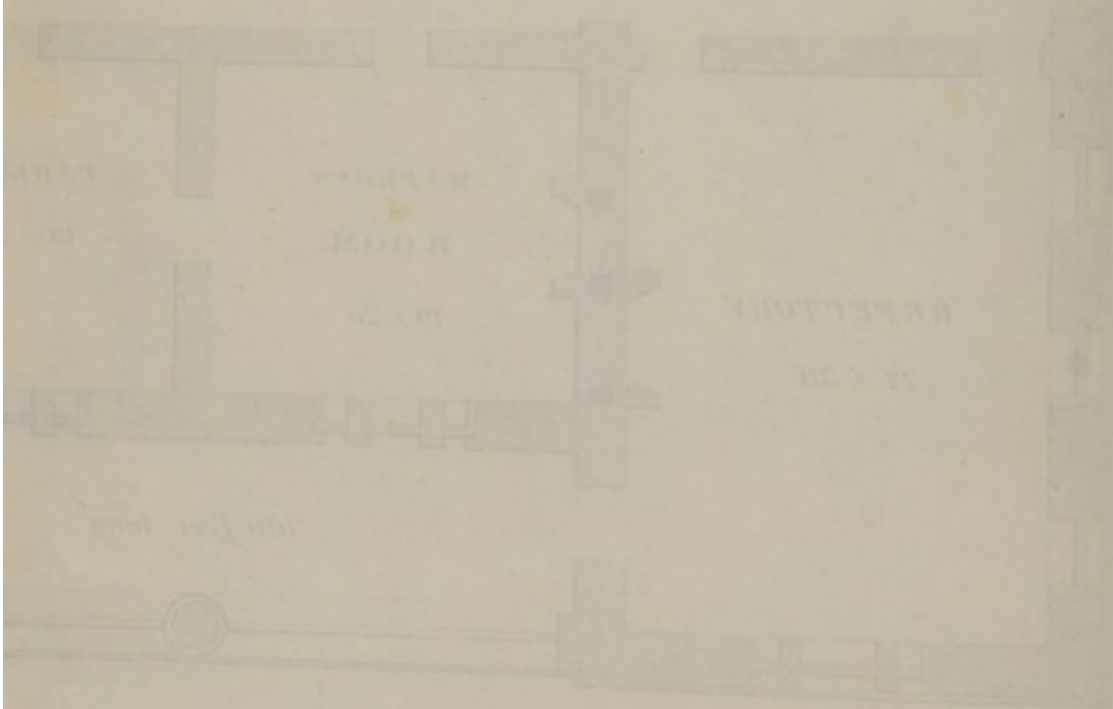
PLAN
 OF THE 1ST FLOOR OF THE
MARINE HOSPITAL
 TO ACCOMMODATE 50 PATIENTS.
 BESIDES OFFICERS & C.
Rob^t Mills, Architect.



PLAN OF THE BUILDING
GENERAL



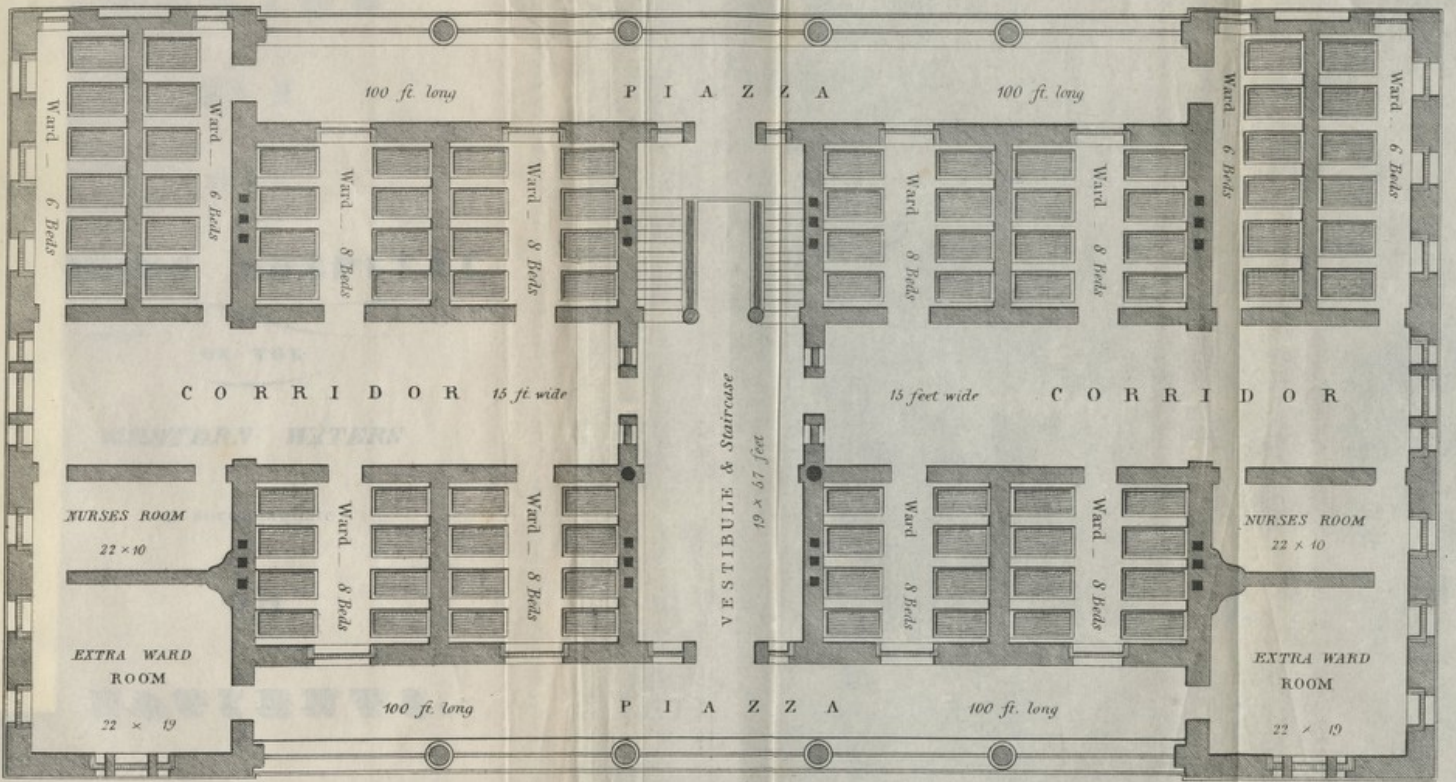
12 feet wide



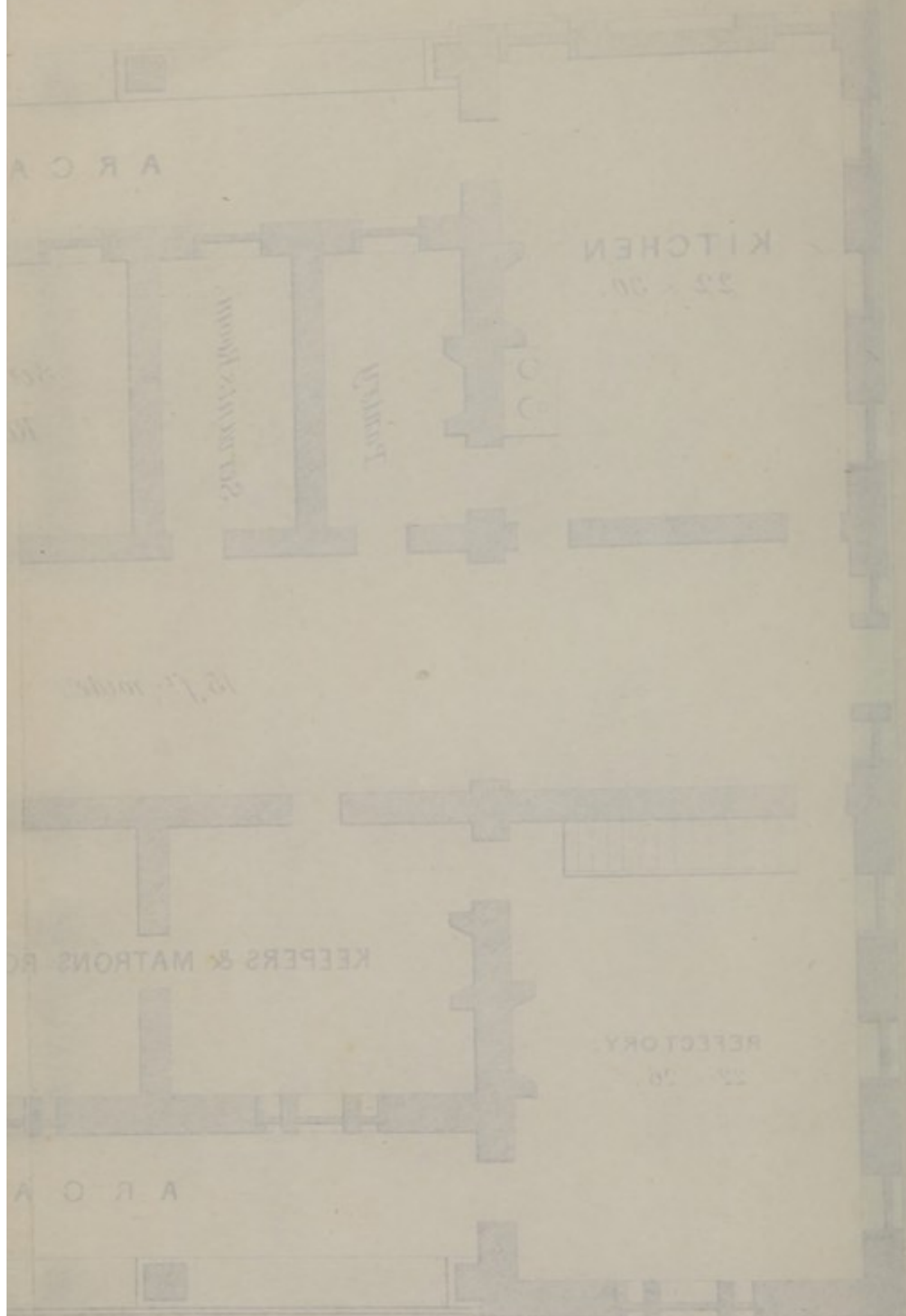
Plan of Building including
Robt. Mills' addition

PLAN OF THE SECOND STORY OF THE MARINE HOSPITAL, TO ACCOMMODATE 100 PATIENTS.

Rob^l Mills, Architect.



PLAN OF THE B...



Wm. L. ...

**Photomount
Pamphlet
Binder**
Gaylord Bros., Inc.
Makers
Syracuse, N.Y.
Pat. No. 877188

NATIONAL LIBRARY OF MEDICINE



NLM 03276937 1