

Plan of the foetal circulation / references made by W.E. Horner, M.D.

Contributors

Horner, William E. 1793-1853.
Webster, James, 1776?-1851
National Library of Medicine (U.S.)

Publication/Creation

Philadelphia : Published by James Webster ..., [1818]

Persistent URL

<https://wellcomecollection.org/works/qthkx2gf>

License and attribution

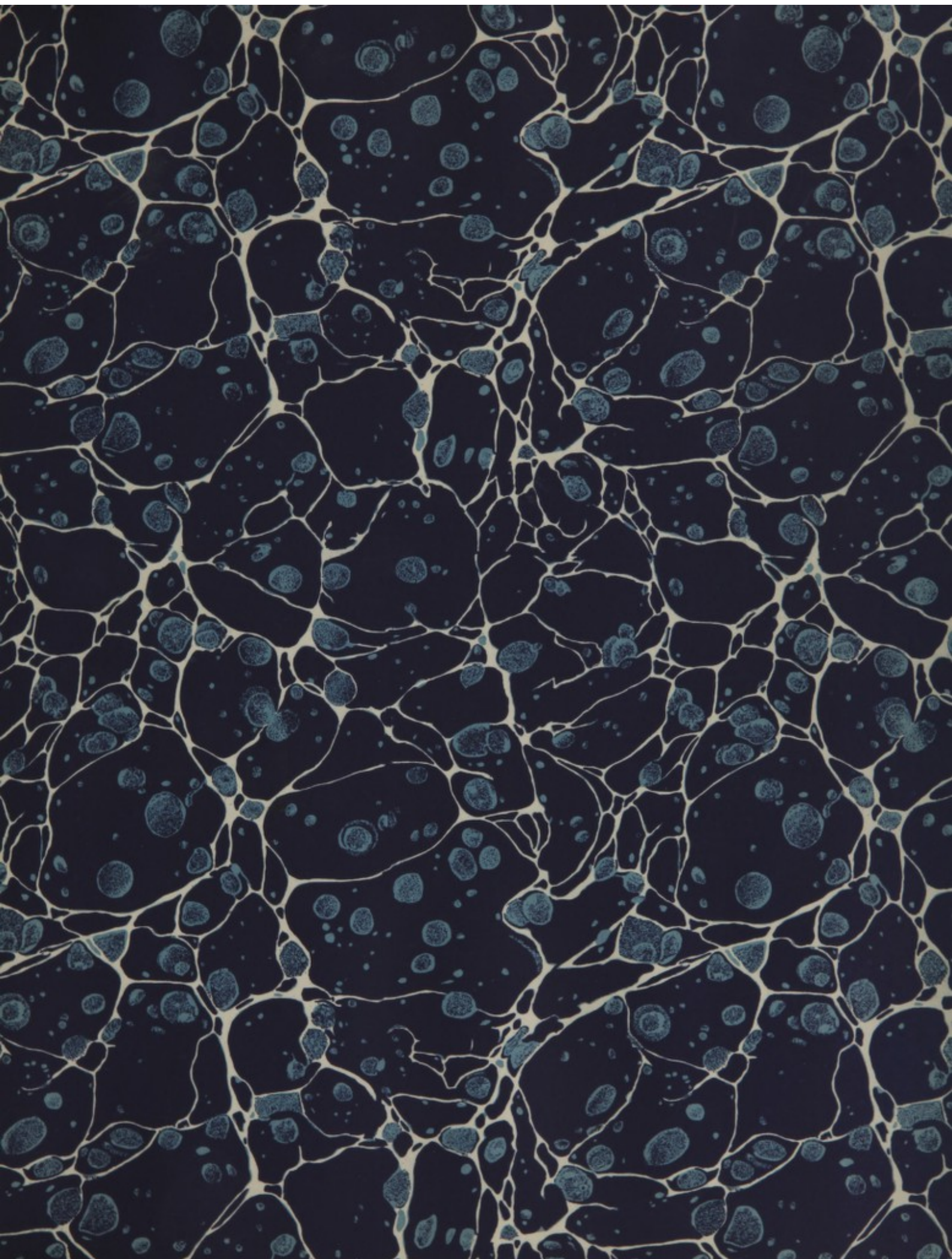
This material has been provided by This material has been provided by the National Library of Medicine (U.S.), through the Medical Heritage Library. The original may be consulted at the National Library of Medicine (U.S.) where the originals may be consulted.

This work has been identified as being free of known restrictions under copyright law, including all related and neighbouring rights and is being made available under the Creative Commons, Public Domain Mark.

You can copy, modify, distribute and perform the work, even for commercial purposes, without asking permission.

**wellcome
collection**

Wellcome Collection
183 Euston Road
London NW1 2BE UK
T +44 (0)20 7611 8722
E library@wellcomecollection.org
<https://wellcomecollection.org>

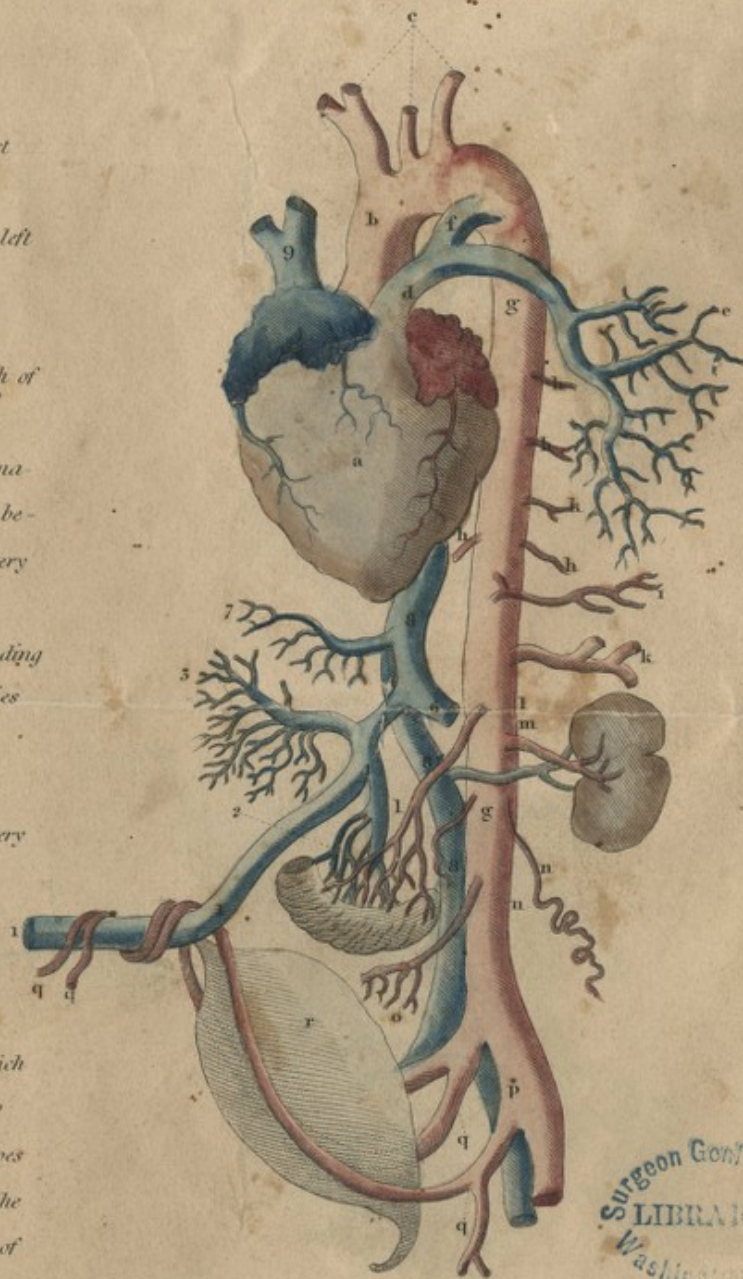


Plan of the Fetal Circulation

References made by W. E. Horner M.D.

REFERENCE

- a. Right ventricle of the heart
- b. The curve of the aorta
- c. The arteria innominata left carotid & left subclavian
- d. Pulmonary artery
- e. Ramifications of left branch of Pulmonary artery
- f. The ductus arteriosus making a communication between the pulmonary artery and the aorta
- gg. Trunk of the aorta descending
- h.h.h.h. Intercostal arteries
- i. Phrenic artery
- k. Celiac artery
- l. Superior mesenteric artery
- m. Emulgent artery
- nn. Spermatic artery
- o. Inferior mesenteric artery
- p. Primitive iliac
- qq. External iliac artery which is seen dividing into two branches the shorter goes to the lower extremity the longer runs on the side of



the bladder up to the navel being the proper umbilical artery the dotted lines represent the course of the umbilical artery on the other side of the Bladder

The artery from each side is seen twisted around the umbilical vein forming with it the umbilical chord

r. The bladder

Fig. 1. Umbilical vein

- 2. Mesenteric veins forming by their junction the vena Portarum
- 3. Branches of vena portarum in the Liver
- 4. The sinus of the vena Portarum
- 5. Ductus venosus
- 6. Left hepatic vein
- 7. Right hepatic vein
- 8.8.8. Ascending cava
- 9. Descending Cava

Surgeon General's Office
LIBRARY
Washington, D.C.

Philadelphia

Published by James Webster 10 So. 8th St.

Entered according to Act of Congress, the 5th day of January 1818, by James Webster of the State of Pennsylvania.

454838

Horner M. B.

12
LIBRARY

Med. Hist.
WZ
270
FH 816p
1818

