

Plates illustrative of diseases of the intestinal tract / arranged by L.B.V. Wooley.

Contributors

Wooley, L. B. V.
Faber, H.
Faber, H.
Curtis, E.
Moras, F.
Emory University. General Libraries

Publication/Creation

Atlanta : Jas P. Harrison, 1883.

Persistent URL

<https://wellcomecollection.org/works/x3yhxm24>

License and attribution

This material has been provided by This material has been provided by the Woodruff Health Sciences Center Library at Emory University, through the Medical Heritage Library. The original may be consulted at the Woodruff Health Sciences Center Library, Emory University. where the originals may be consulted.

This work has been identified as being free of known restrictions under copyright law, including all related and neighbouring rights and is being made available under the Creative Commons, Public Domain Mark.

You can copy, modify, distribute and perform the work, even for commercial purposes, without asking permission.



Wellcome Collection
183 Euston Road
London NW1 2BE UK
T +44 (0)20 7611 8722
E library@wellcomecollection.org
<https://wellcomecollection.org>

FROM
AS. P. HARRISON & CO.
LITHOGRAPHERS
PRINTERS BINDERS & C.
COR. ALABAMA & FORSYTH STS. ATLANTA, GA.

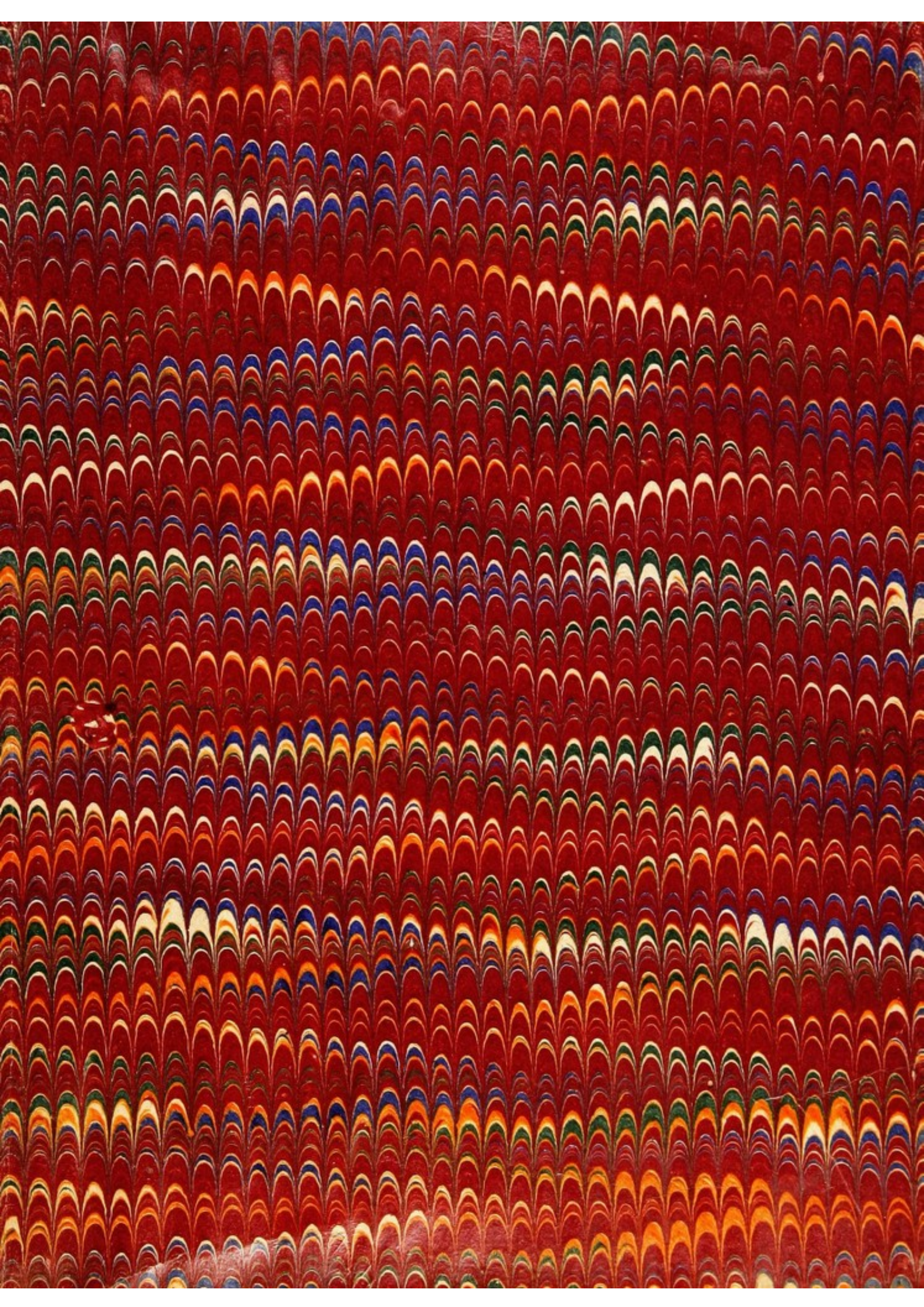
THE
ABNER WELLBORN CALHOUN
MEDICAL LIBRARY
1923



CLASS _____ R

PRESENTED BY

Mildred Seydell



~~Dr. M. B. Hutchinson~~
M. B. Hutchinson

Dr W S El Rio

Also M. B. Hutchinson
Dr M B Hutchinson

PLATES

Illustrative of Diseases

OF THE

INTESTINAL TRACT.

ARRANGED BY

L. B. V. WOOLLEY,

ATLANTA, GA.

Emory 82

ATLANTA, GA.:
JAS. P. HARRISON & CO.,
1883.

PLATES

Illustrative of Diseases

OF THE

INTESTINAL TRACT.

ARRANGED BY

J. B. V. WOOLLEY,

ATTORNEY AT LAW,

ATLANTA, GA.

JAS. T. HARRISON & CO.,

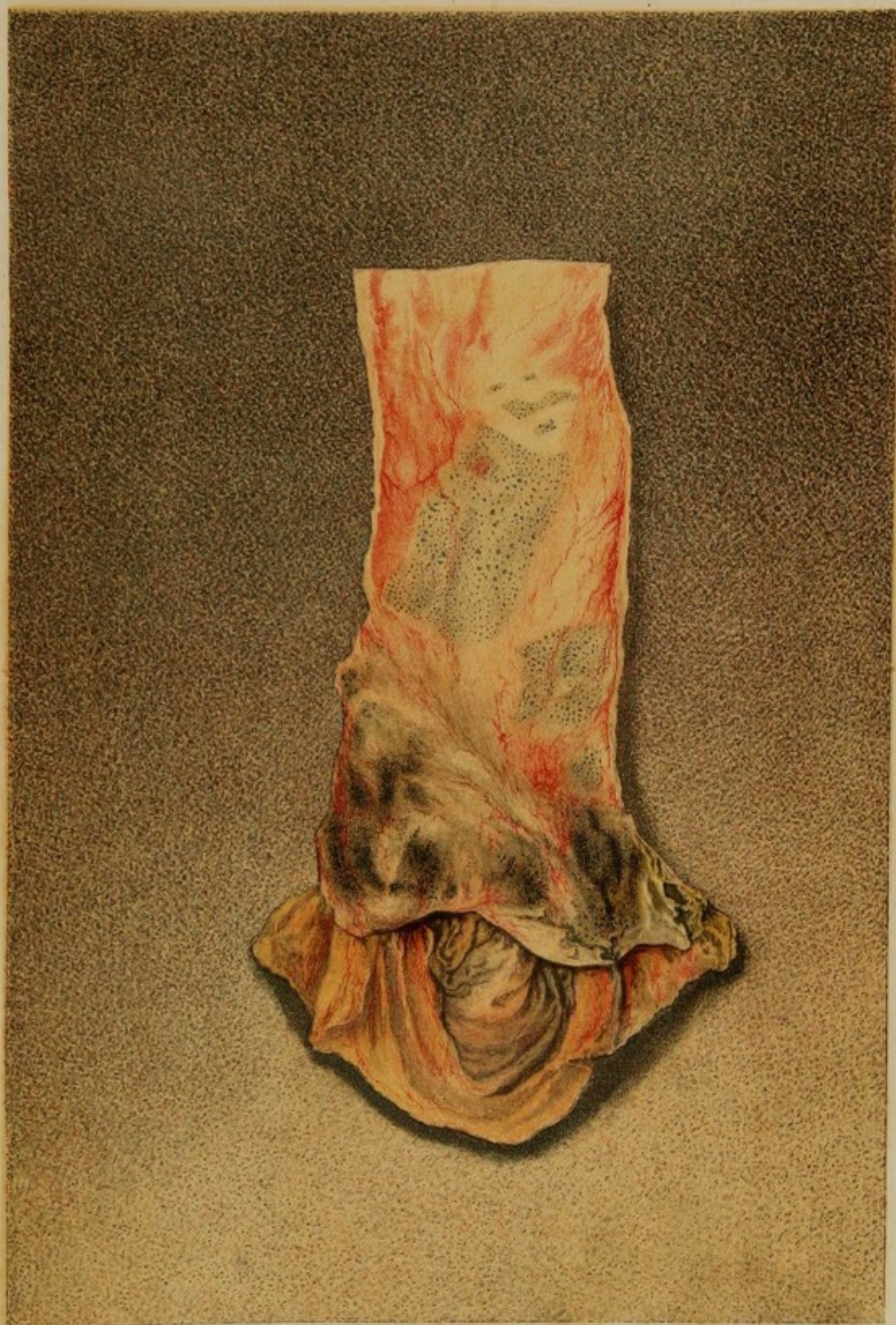
1887.

INDEX.

	PAGE.
CÆCUM—	
Sloughing pseudo-membrane.....	8
COLON—DESCENDING.	
Coated with pseudo-membrane.....	12
Sloughing pseudo-membrane.....	13
Patches of pseudo-membrane and small ulcers.....	14
Oval ulcers.....	33
MISCELLANEOUS PARTS— <i>Inflammation.</i>	
Sub-mucous membrane.....	15
More advanced.....	16
Sub-mucous and commencing ulceration of solitary glands.....	22
Pseudo-membrane and thickening of colon.....	36
SOLITARY GLANDS—	
Enlarged.....	17
Enlarged, being recently ruptured.....	18
Containing and surrounded by pigment deposits.....	19
Ulceration and inflammation of sub-mucous coat.....	22
ULCERS—	
Ulceration.....	20
Follicular ulceration.....	21-23
Ulceration of solitary glands and inflammation of sub-mucous coat.....	22
Cicatrices of follicular ulceration.....	24
Section through an edge.....	25
Superficial, deep and excavated.....	26
Irregular.....	27
Follicular—chronic dysentery.....	28-29
Extensive—chronic dysentery and metastatic foci of liver.....	30
Cicatrices of diphtheritic.....	31-32
Follicular and patches of pseudo-membrane.....	34
TRANSVERSE—	
Pseudo-membrane patches.....	9
Enlarged glands ulcerated at their apices.....	10
Cysts.....	11
ILEUM—DEPOSITS.	
In Pyer's patches near ilio-cæcal valve—shaven beard appearance.....	1
SOLITARY FOLLICLES AND GLANDS.	
Inflamed mucous membrane, enlarged follicles and shaven beard appearance of Pyer's patches.....	2
Enlarged follicles.....	3
Enlarged follicles and hypertrophied villi.....	4
An enlarged gland.....	5
Enlarged and protruded gland.....	6
ULCER—	
Tubercular.....	7
RECTUM—	
Sloughing pseudo-membrane.....	37

INDEX

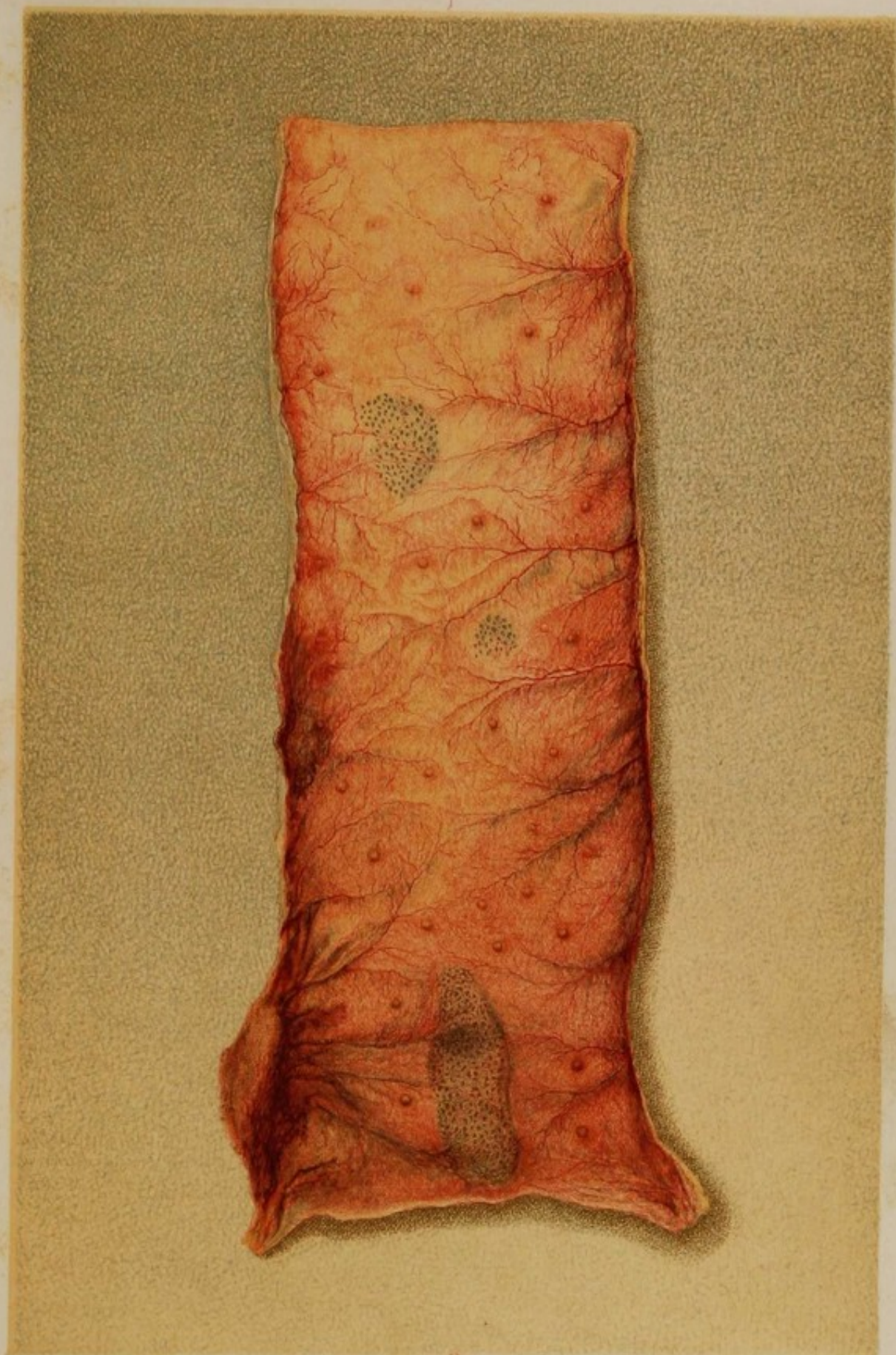
1	Introduction
2	General Principles
3	Methods of Investigation
4	Observations and Experiments
5	Results and Conclusions
6	References
7	Appendix
8	Index
9	Index
10	Index
11	Index
12	Index
13	Index
14	Index
15	Index
16	Index
17	Index
18	Index
19	Index
20	Index
21	Index
22	Index
23	Index
24	Index
25	Index
26	Index
27	Index
28	Index
29	Index
30	Index
31	Index
32	Index
33	Index
34	Index
35	Index
36	Index
37	Index
38	Index
39	Index
40	Index
41	Index
42	Index
43	Index
44	Index
45	Index
46	Index
47	Index
48	Index
49	Index
50	Index
51	Index
52	Index
53	Index
54	Index
55	Index
56	Index
57	Index
58	Index
59	Index
60	Index
61	Index
62	Index
63	Index
64	Index
65	Index
66	Index
67	Index
68	Index
69	Index
70	Index
71	Index
72	Index
73	Index
74	Index
75	Index
76	Index
77	Index
78	Index
79	Index
80	Index
81	Index
82	Index
83	Index
84	Index
85	Index
86	Index
87	Index
88	Index
89	Index
90	Index
91	Index
92	Index
93	Index
94	Index
95	Index
96	Index
97	Index
98	Index
99	Index
100	Index



H. Faber pinx'

F. Moras chromolith Phila

PIGMENT DEPOSITS IN PEYER'S PATCHES,
near the ileocaecal valve. Shaven-beard appearance.



J. F. G. 1871

J. W. H. 1871

PORTION OF ILEUM WITH INFLAMED MUCOUS MEMBRANE,
solitary follicles enlarged, and shaven, beard appearance of Peyer's patches.



Am. Photo-Engraving Co.,

1002 Arch St., Philadelphia.

ILEUM WITH ENLARGED SOLITARY FOLLICLES.

No. 98. MEDICAL SECTION.

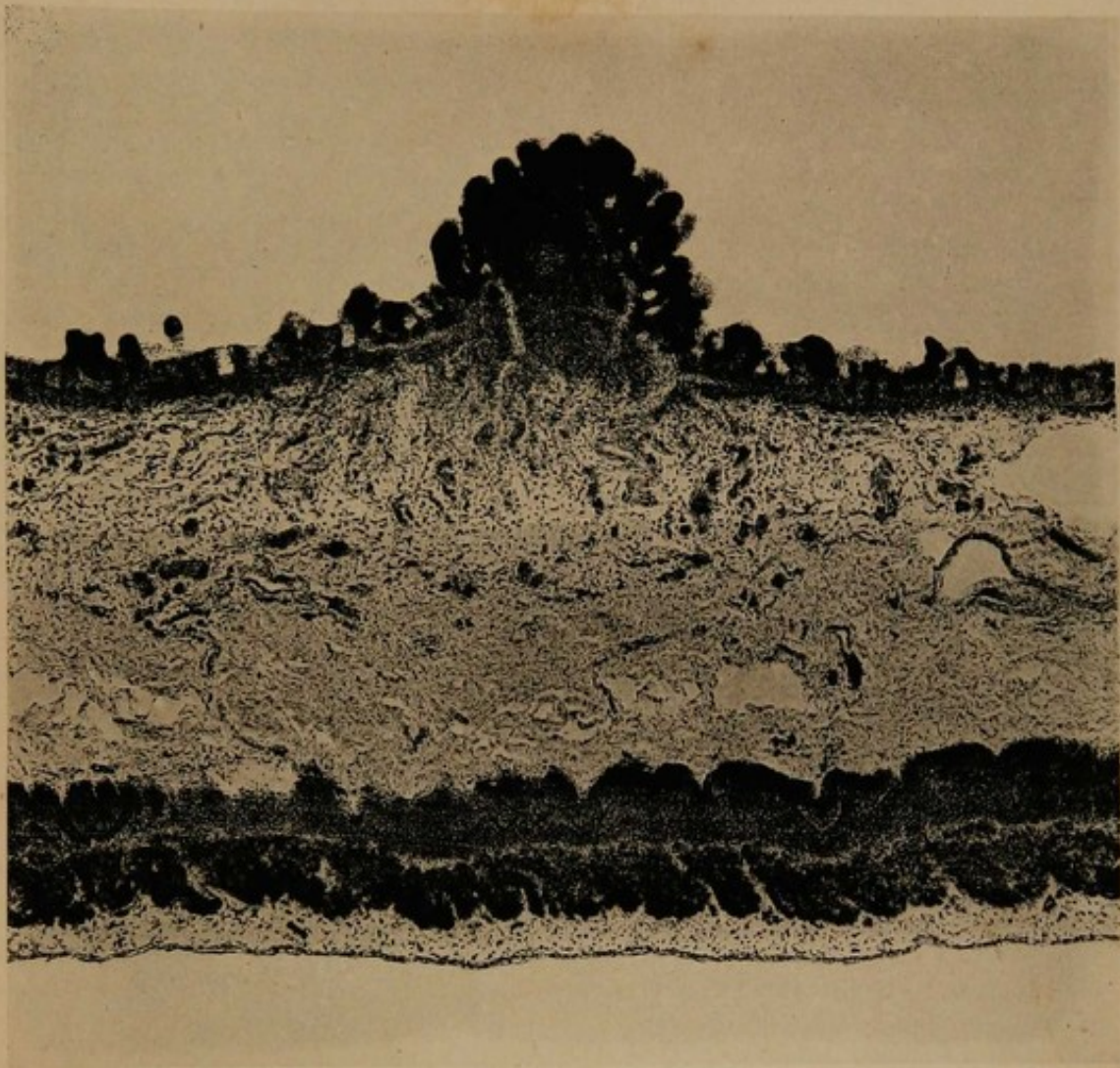


Am. Photo-Relief Printing Co.,

1002 Arch St., Philadelphia.

ILEUM WITH ENLARGED SOLITARY FOLLICLES
AND HYPERTROPHIED VILLI.

No. 600. MEDICAL SECTION.



Helio type.

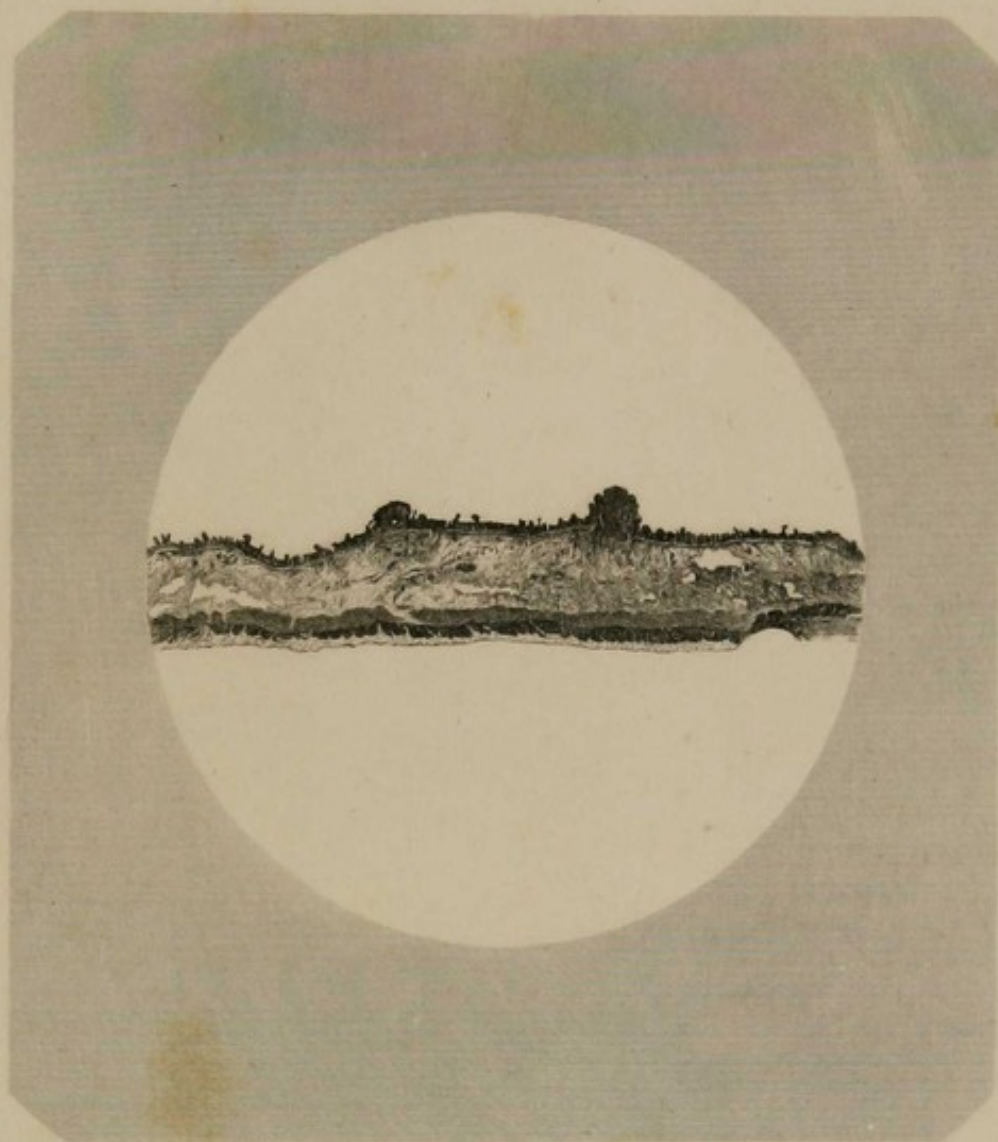
James R. Osgood & Co., Boston.

PERPENDICULAR SECTION OF ILEUM

SHOWING AN ENLARGED SOLITARY GLAND. MAGNIFIED 63 DIAMETERS.

PHOTO-MICROGRAPH BY ASSISTANT SURGEON J. J. WOODWARD, U. S. A.

From No. 417. MICROSCOPICAL SECTION.



Photographed by Dr. F. Carter, F.R.S.

on Steel by H. Fisher

PERPENDICULAR SECTION OF ILEUM
Showing
enlargement and protrusion of the solitary glands.
Magnified 12 diameters.



Heliotype.

James R. Osgood & Co., Boston.

TUBERCULAR ULCER OF ILEUM.

FRONT VIEW.

No. 257. MEDICAL SECTION.



Helotype.

James R. Osgood & Co., Boston.

CÆCUM WITH SLOUGHING PSEUDO-MEMBRANE.

No. 1060. MEDICAL SECTION.

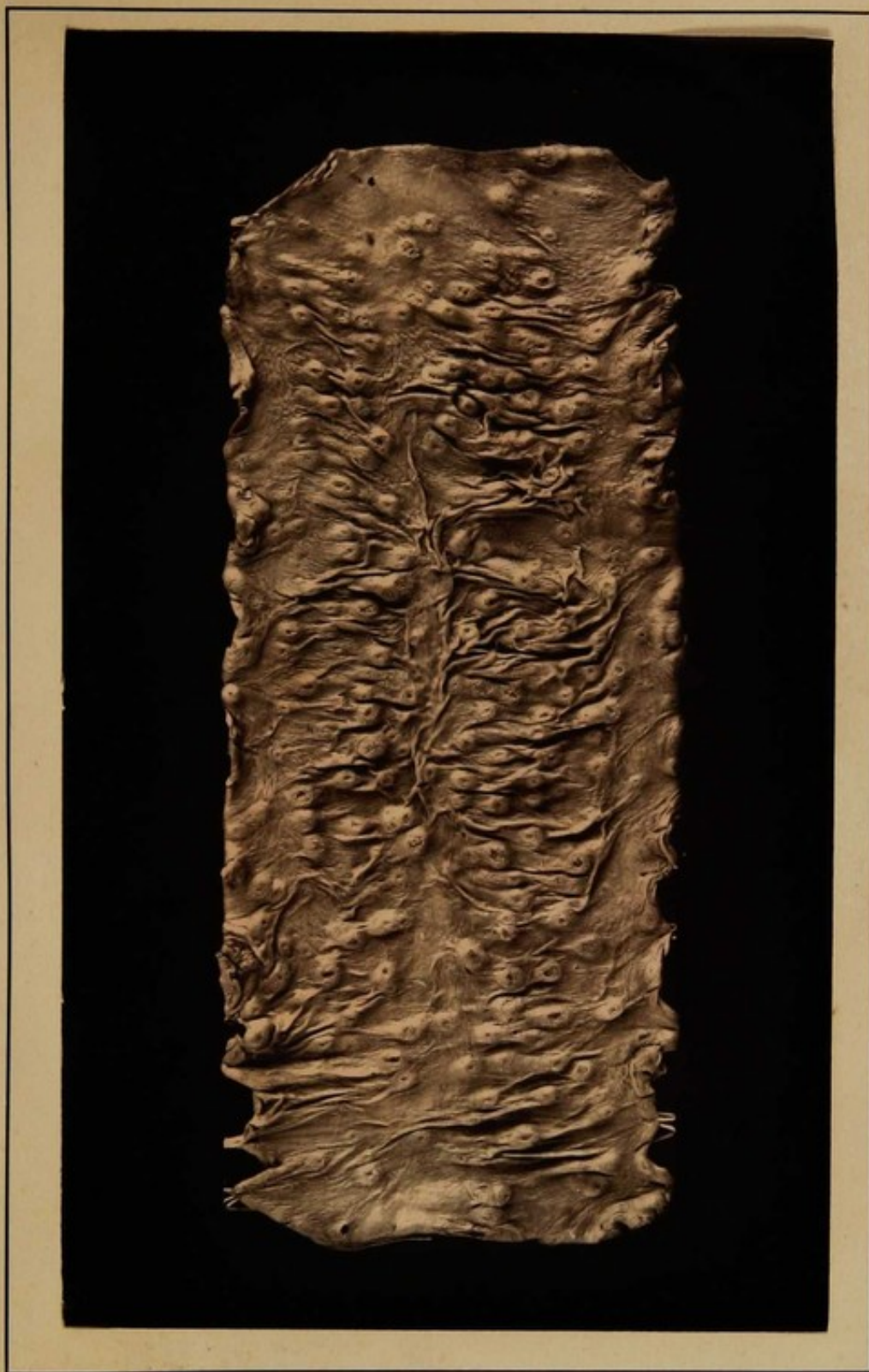


Helotype.

James R. Osgood & Co., Boston.

TRANSVERSE COLON WITH PSEUDO-MEMBRANOUS PATCHES.

No. 124. MEDICAL SECTION.



Am. Photo-Relief Printing Co.,

624 S. 24th St., Philadelphia.

TRANSVERSE COLON WITH ENLARGED GLANDS
ULCERATED AT THEIR APICES.

No 820. MEDICAL SECTION.

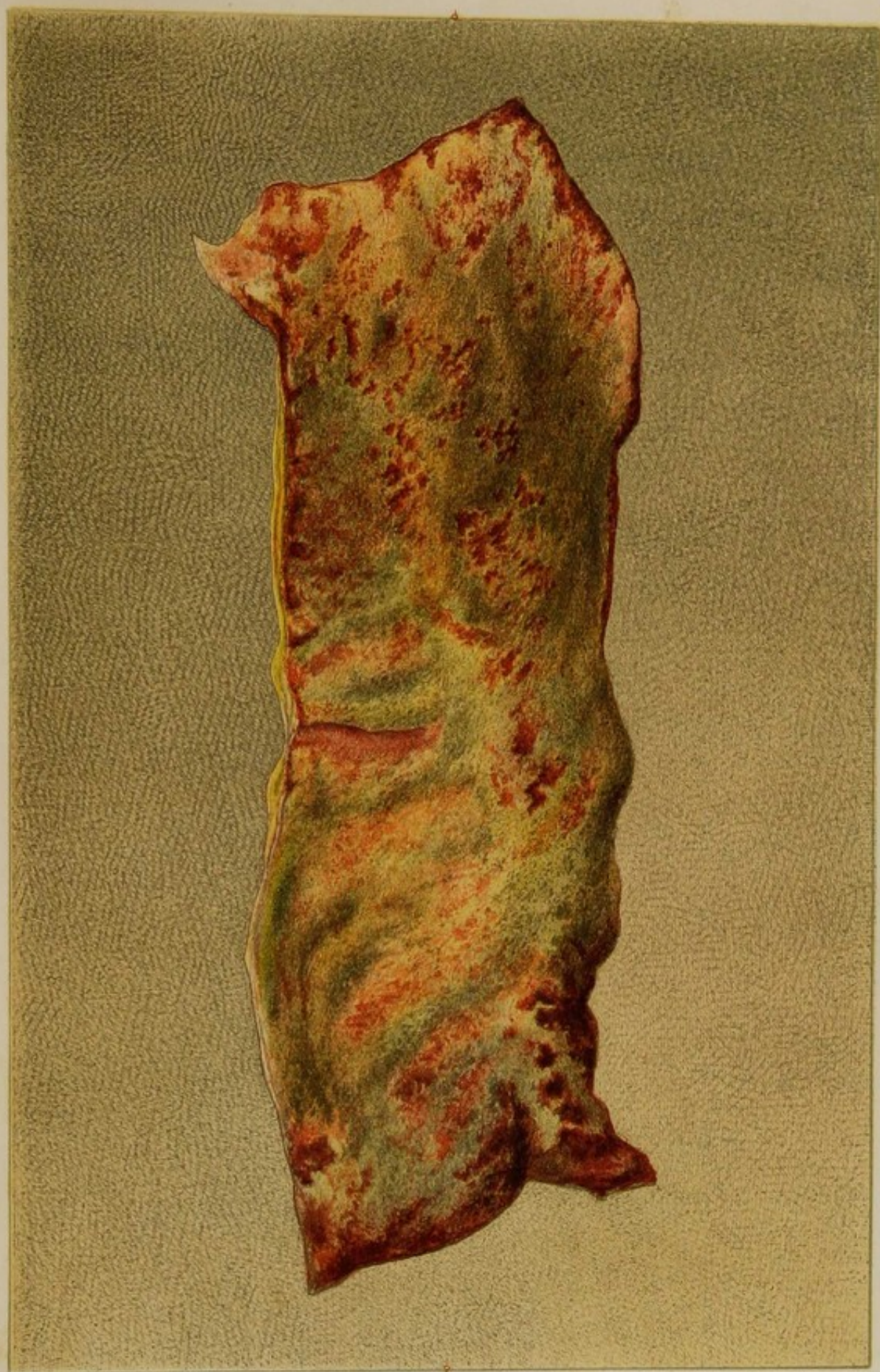


Heliotype.

James R. Osgood & Co., Boston.

TRANSVERSE COLON WITH CYSTS.

No. 602. MEDICAL SECTION.





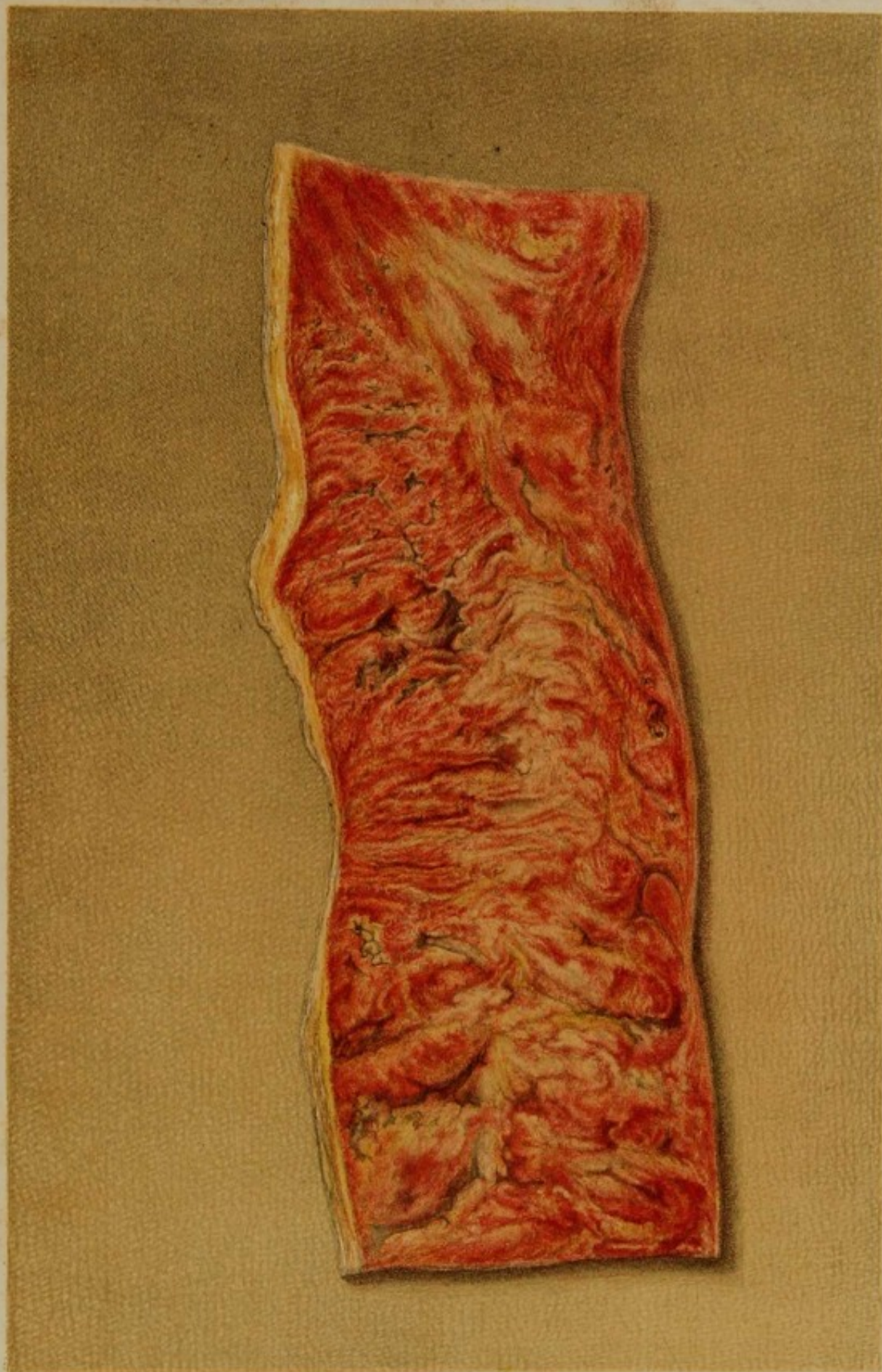
Am. Photo-Relief Printing Co.,

1002 Arch St., Phila.

DESCENDING COLON WITH SLOUGHING PSEUDO-MEMBRANE.

(Reduced in size one-fourth.)

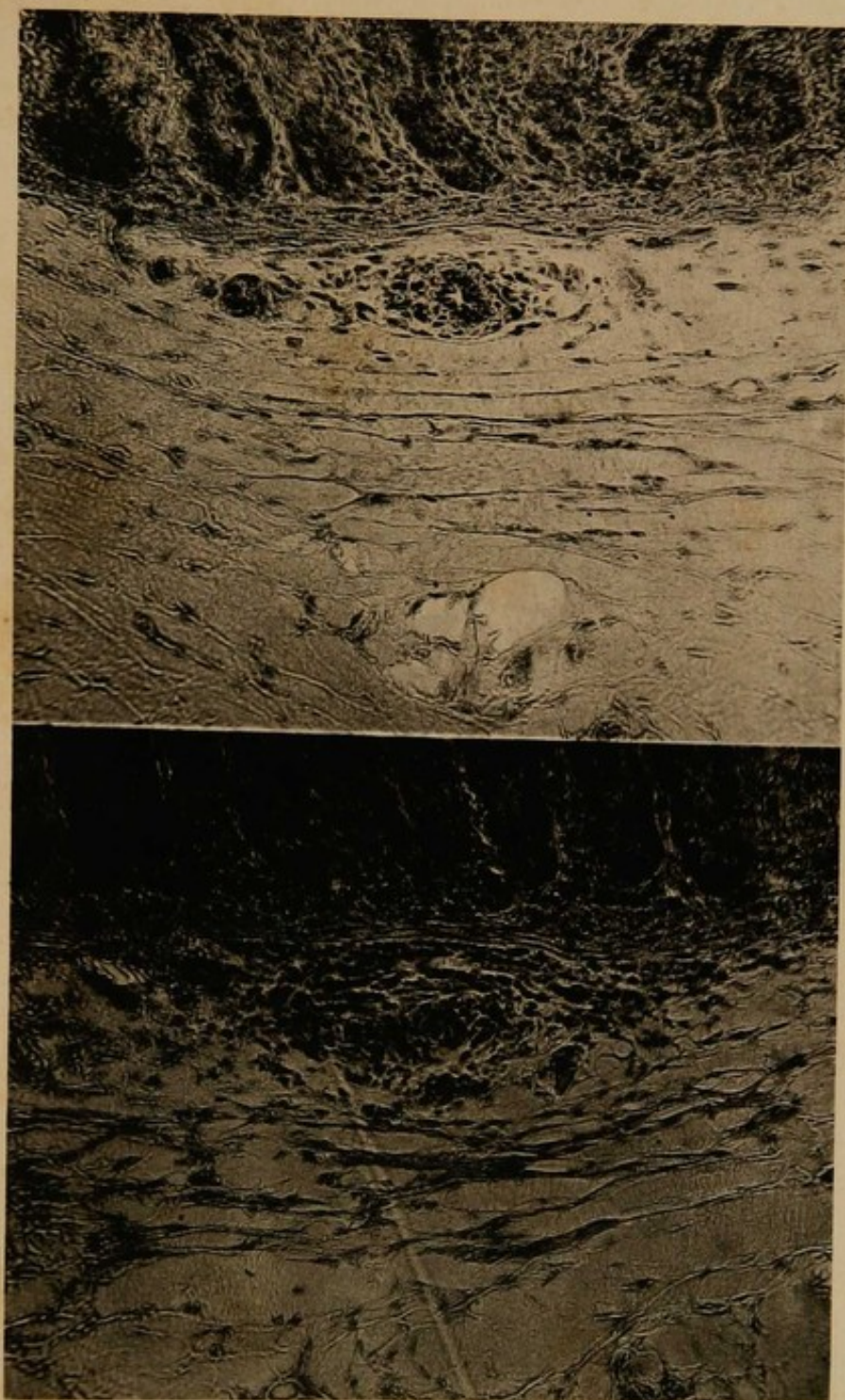
No. 970. MEDICAL SECTION.



H. Fisher pin.

J. Morris chromolith. Phila.

PORTION OF DESCENDING COLON
with patches of pseudo membrane, and small ulcers.



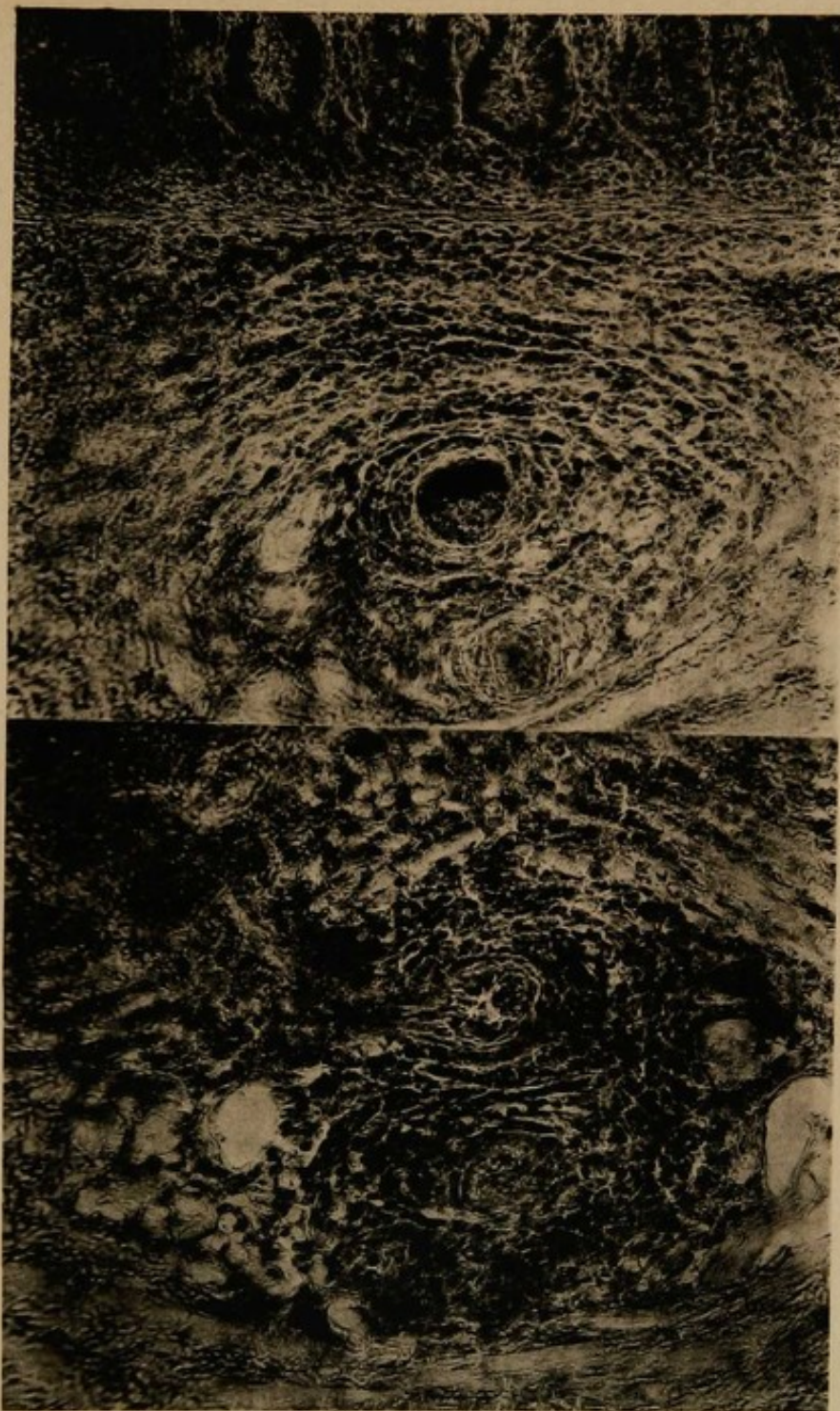
Heliotype.

James R. Osgood & Co., Boston.

TWO VIEWS OF A PERPENDICULAR SECTION OF COLON.
SHOWING INFLAMMATION OF THE SUB-MUCOUS LAYER. MAGNIFIED 280 DIAMETERS.

PHOTO-MICROGRAPH BY ASSISTANT SURGEON J. J. WOODWARD, U. S. A.

From No. 668. MICROSCOPICAL SECTION.



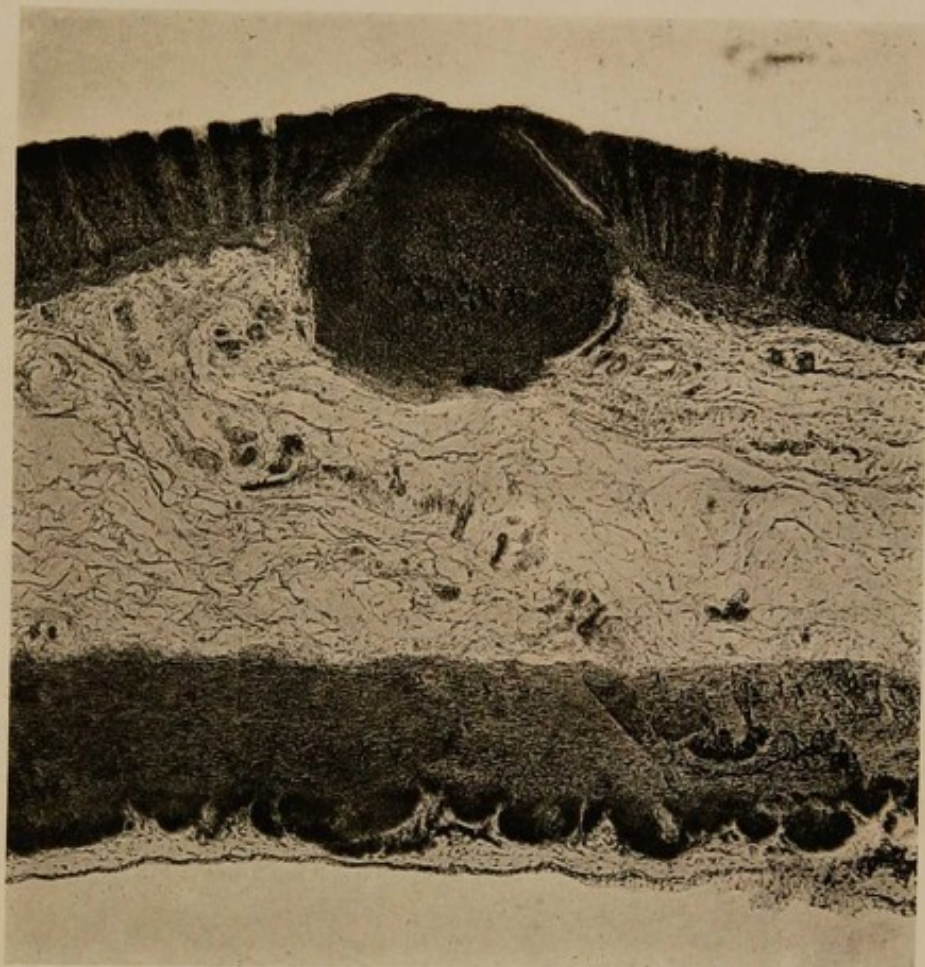
Heliotype.

James R. Osgood & Co., Boston.

TWO VIEWS OF A PERPENDICULAR SECTION OF COLON.
SHOWING MORE ADVANCED INFLAMMATION. MAGNIFIED 280 DIAMETERS.

PHOTO-MICROGRAPH BY ASSISTANT SURGEON J. J. WOODWARD, U. S. A.

From No. 668. MICROSCOPICAL SECTION.



Heliotype.

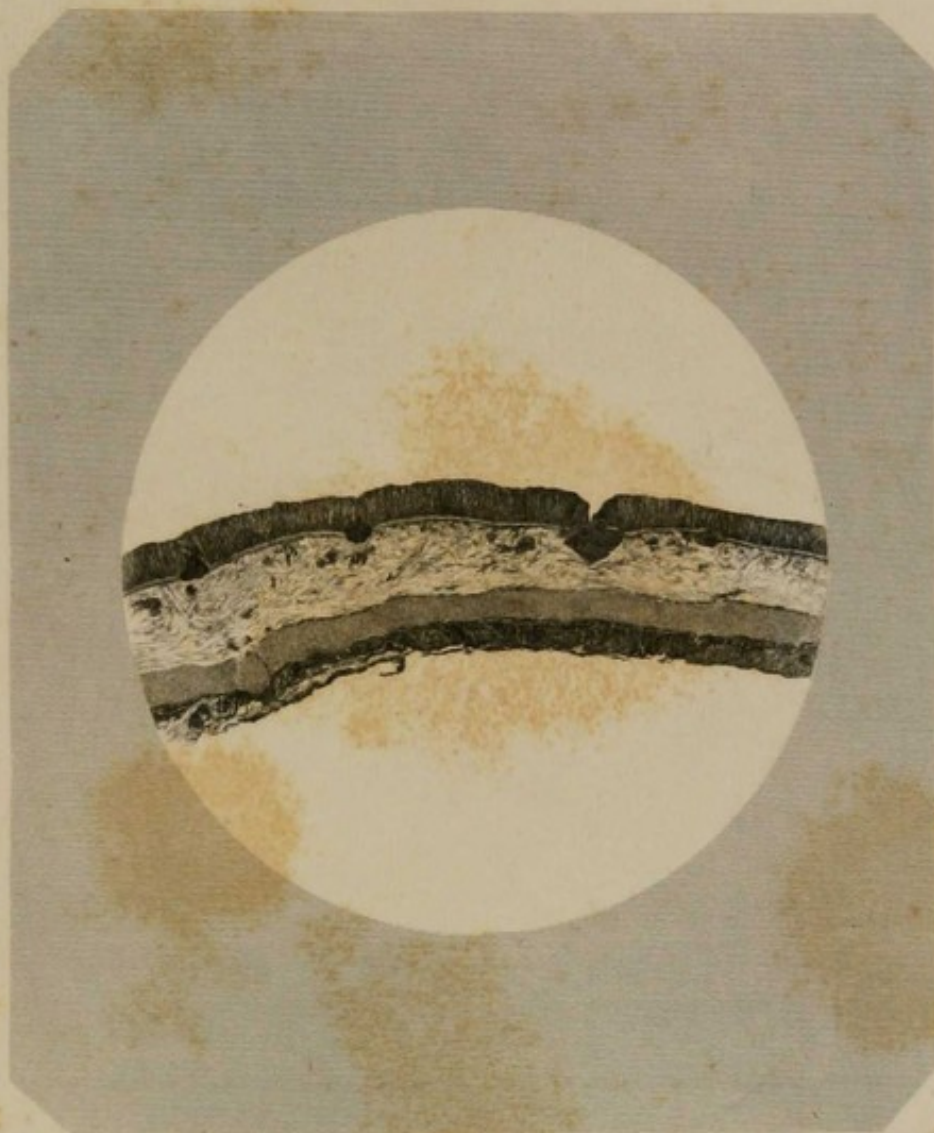
James R. Osgood & Co., Boston.

PERPENDICULAR SECTION OF COLON.

SHOWING AN ENLARGED SOLITARY GLAND. MAGNIFIED 63 DIAMETERS.

PHOTO-MICROGRAPH BY ASSISTANT SURGEON J. J. WOODWARD, U.S.A.

From No. 650. MICROSCOPICAL SECTION.



Photographed by Dr. E. Curtis U.S.A.

on steel by H. Fisher.

PERPENDICULAR SECTION OF COLON,
showing
an enlarged solitary gland which has recently ruptured.
Magnified 12 diameters.



R. Silver pinel

F. Meras lith. Philad.

COLON WITH PIGMENT DEPOSITS

In and around the solitary Glands.





H. Fisher pin

F. Morris (Graham) Pin

ULCERATION OF THE COLON.

No 115. Medical Section.

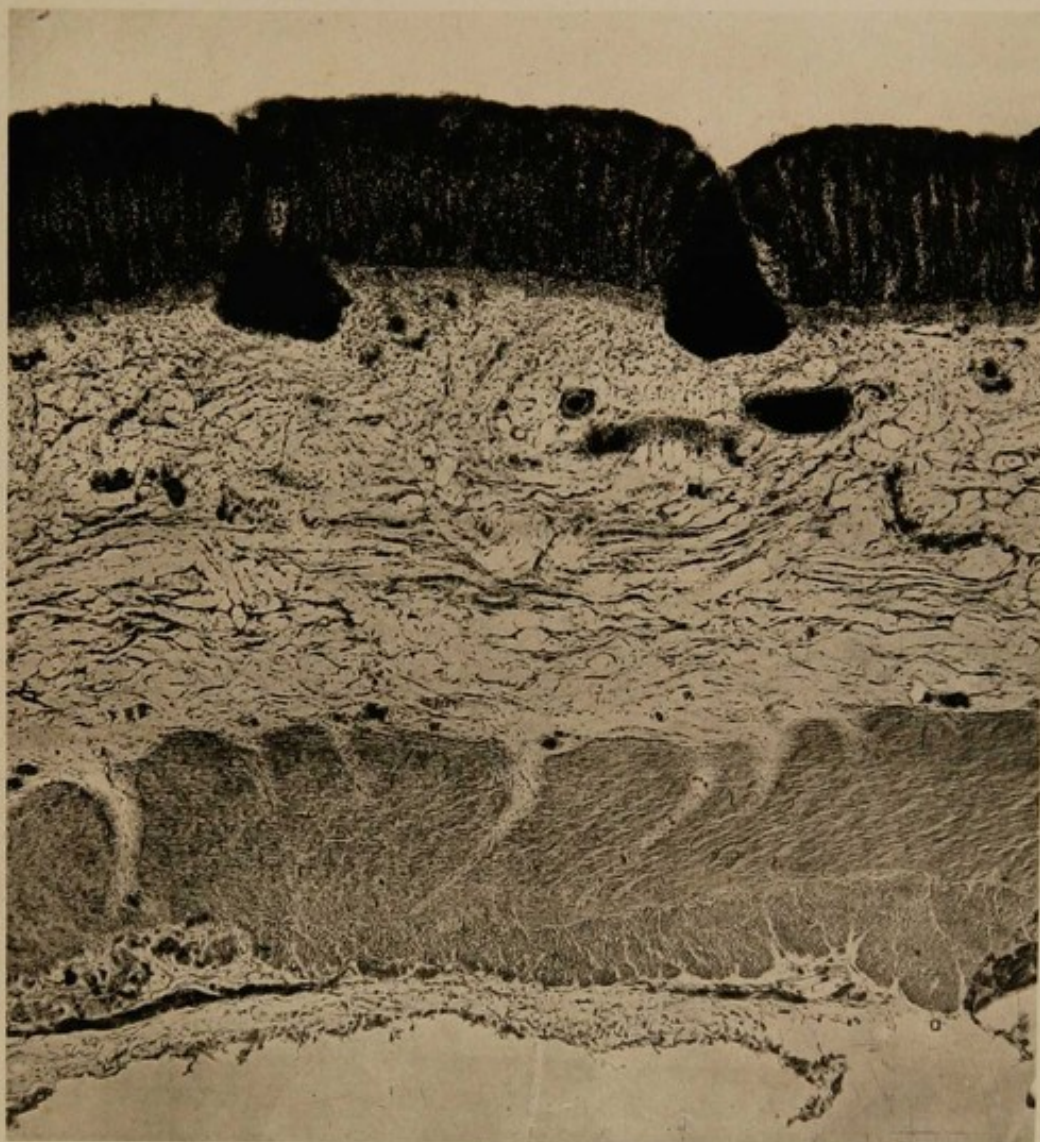


Heliotype.

James R. Osgood & Co., Boston.

FOLLICULAR ULCERATION OF THE COLON.

No. 206 MEDICAL SECTION.



Heliotype.

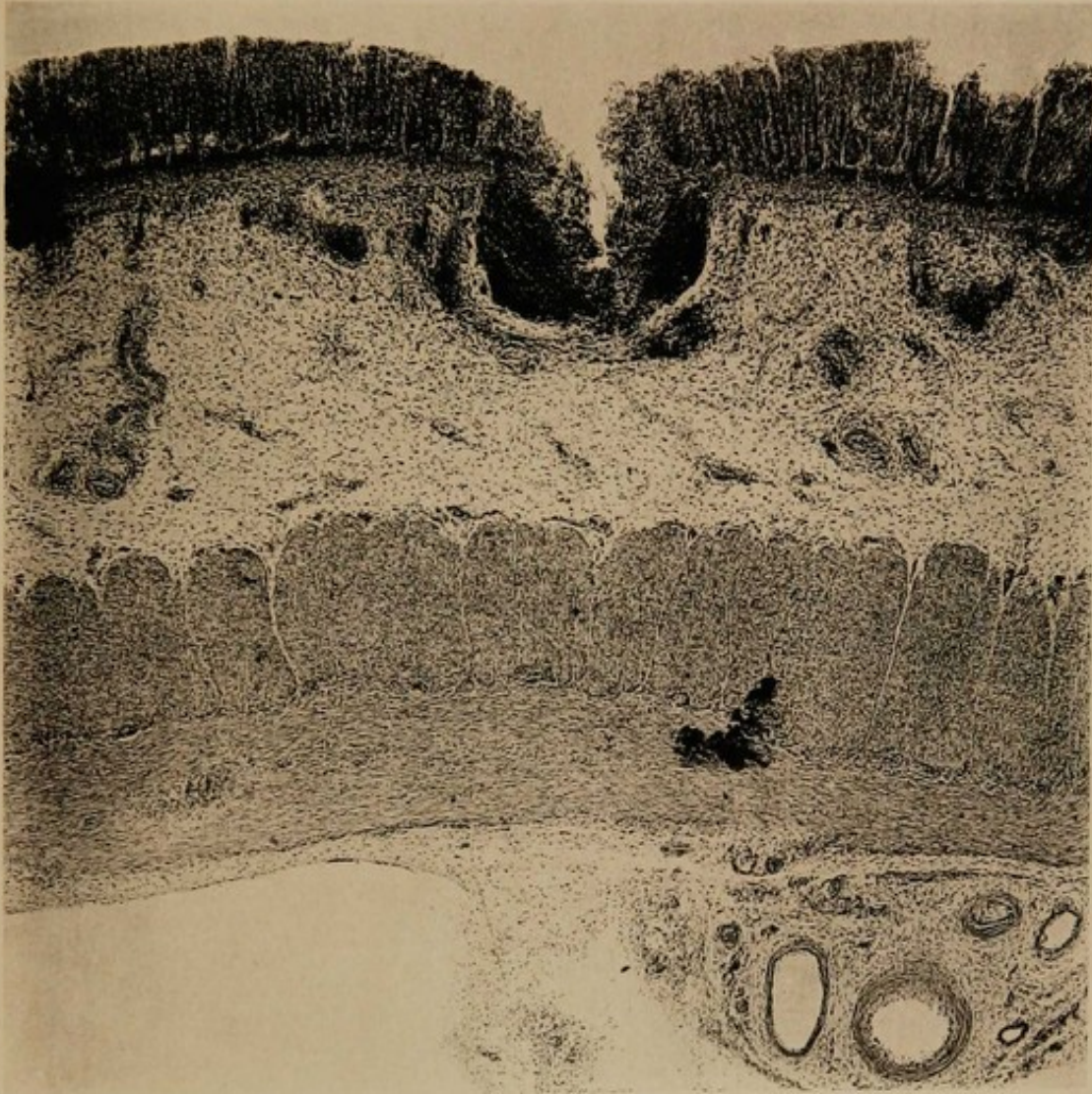
James R. Osgood & Co., Boston.

PERPENDICULAR SECTION OF COLON.

Showing commencing ulceration of the solitary glands, and inflammation of the submucous coat.
Magnified 63 Diameters.

PHOTO-MICROGRAPH BY ASSISTANT SURGEON J. J. WOODWARD, U.S.A.

From No. 658. MICROSCOPICAL SECTION.



Heliotype.

James R. Osgood & Co., Boston.

PERPENDICULAR SECTION OF COLON,
SHOWING A FOLLICULAR ULCER. MAGNIFIED 70 DIAMETERS.

PHOTO-MICROGRAPH BY ASSISTANT-SURGEON J. J. WOODWARD, U. S. A.

From No. 6102. MICROSCOPICAL SECTION.



Heliotype.

James R. Osgood & Co., Boston.

COLON, WITH CICATRICES OF FOLLICULAR ULCERS.

No. 603. MEDICAL SECTION.

[ENLARGED ONE-HALF.]



Heliotype.

James R. Osgood & Co., Boston.

PERPENDICULAR SECTION OF COLON
THROUGH THE EDGE OF AN ULCER. MAGNIFIED 63 DIAMETERS.

PHOTO-MICROGRAPH BY ASSISTANT SURGEON J. J. WOODWARD, U. S. A.

From No. 711. MICROSCOPICAL SECTION.



Photographed by Dr. E. Curtis U.S.A.

on steel by H. Fisher

PERPENDICULAR SECTION OF COLON.
showing
a superficial a deep and an excavating ulcer.
Magnified 12 diameters.



Heliotype.

COLON WITH IRREGULAR ULCERS.

No. 195. MEDICAL SECTION.



FOLLICULAR ULCERS OF COLON.-CHRONIC DYSENTERY.

The colon is thickened and anæmic



H. Faber. sculp.

F. Morax. chromolith. Phila.

FOLLICULAR ULCERS OF COLON.-CHRONIC DYSENTERY.

The edges of many of the ulcers are fringed with pseudo-membrane.



H. Faber pinx.

F. Moras chromolith. Phil.

EXTENSIVE ULCERATION OF COLON.-CHRONIC DYSENTERY.
METASTATIC FOCI OF LIVER.



Heliotype.

James R. Osgood & Co., Boston.

CICATRICES OF DIPHTHERITIC ULCERS IN THE COLON.

NO. 1003, MEDICAL SECTION.

[ENLARGED A LITTLE OVER THREE DIAMETERS.]





Helotype.

James R. Osgood & Co., Boston.

COLON, WITH CICATRICES OF DIPHTHERITIC ULCERS.

No. 1003. MEDICAL SECTION.

[ENLARGED ONE-HALF.]



Heliotype.

James R. Osgood & Co., Boston.

DESCENDING COLON WITH OVAL ULCERS.

No. 136. MEDICAL SECTION.

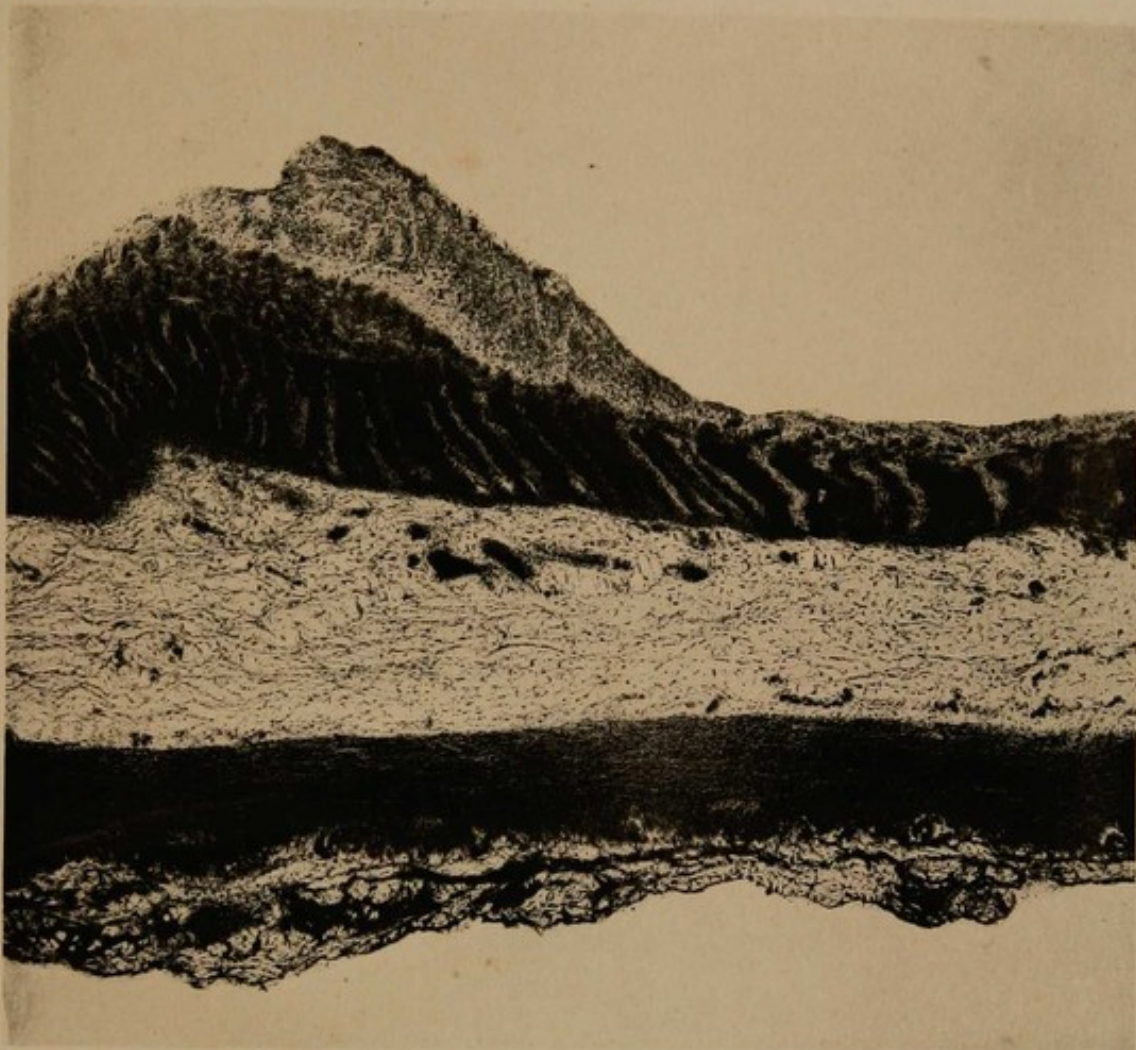


Heliotype.

James R. Osgood & Co., Boston.

COLON WITH FOLLICULAR ULCERS AND PATCHES OF
PSEUDO-MEMBRANE.

No. 279. MEDICAL SECTION.



Heliotype.

James R. Osgood & Co., Boston.

PERPENDICULAR SECTION OF COLON

COATED WITH PSEUDOMEMBRANE. MAGNIFIED 63 DIAMETERS.

PHOTO-MICROGRAPH BY ASSISTANT SURGEON J. J. WOODWARD, U. S. A.

From No. 681. MICROSCOPICAL SECTION.



Photographed by Dr E. Curtis, U.S.A.

on Steel by H. Fisher

PERPENDICULAR SECTION OF COLON.

Showing
thickening and pseudomembranous inflammation.
Magnified 12 diameters



Heliotype.

James R. Osgood & Co., Boston.

RECTUM WITH SLOUGHING PSEUDO-MEMBRANE.

No. 703. MEDICAL SECTION.

July 22, 1899
J. L. C.
10.
X. W. M. R.



