

Patton State Hospital: patients and staff. Drawings by D.R. Wilder, ca. 1954.

Contributors

Wilder, Dudley Raymond, 1916-1957.

Publication/Creation

[1954?]

Persistent URL

<https://wellcomecollection.org/works/u382gddt>

License and attribution

Conditions of use: it is possible this item is protected by copyright and/or related rights. You are free to use this item in any way that is permitted by the copyright and related rights legislation that applies to your use. For other uses you need to obtain permission from the rights-holder(s).



Wellcome Collection
183 Euston Road
London NW1 2BE UK
T +44 (0)20 7611 8722
E library@wellcomecollection.org
<https://wellcomecollection.org>

Audley B. Wilder
"S"

EGG SHELL
DRAWING
TABLET

REG. U.S. PAT. OFF.

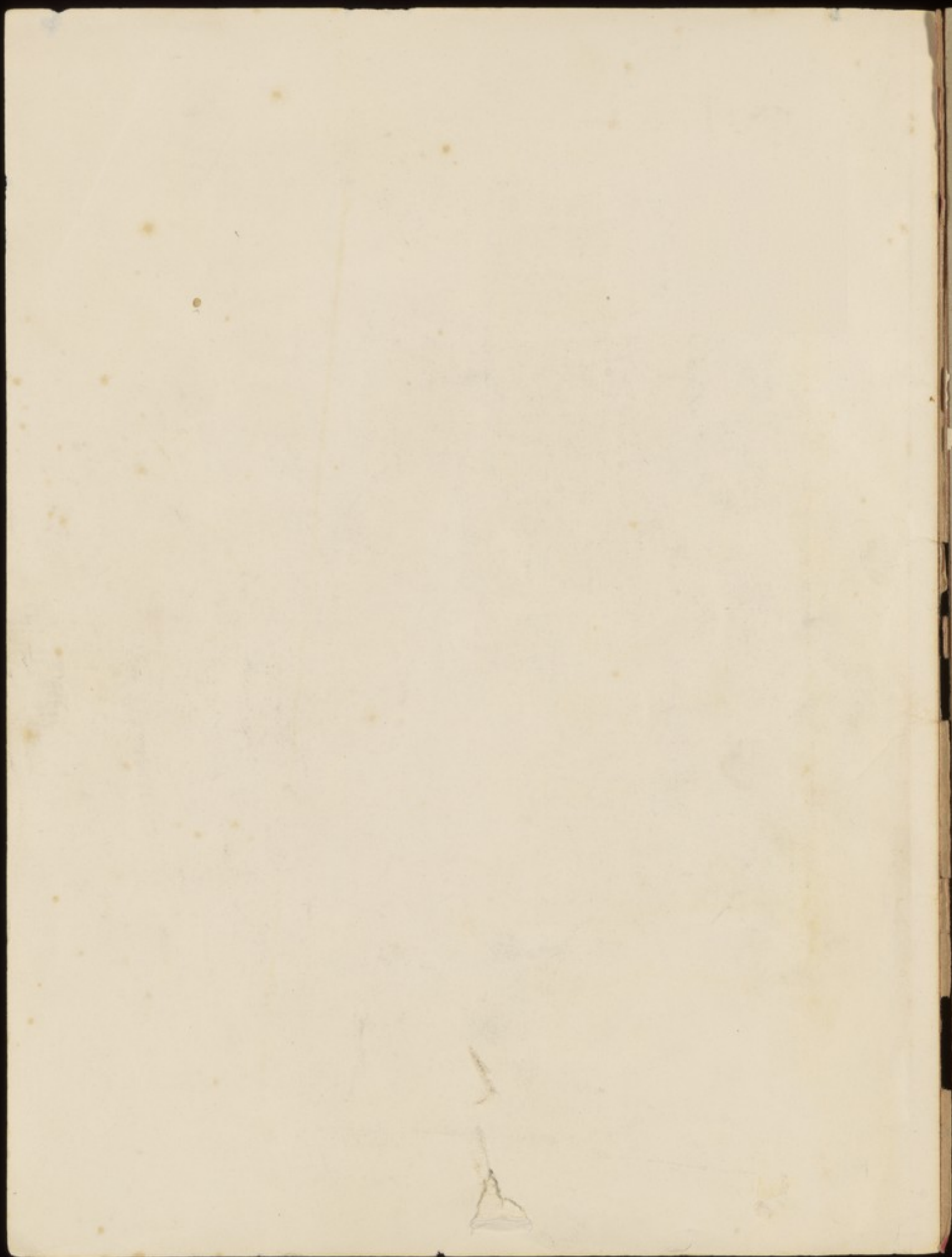
Special Egg Shell Finish for Fine Sketching and Color Work

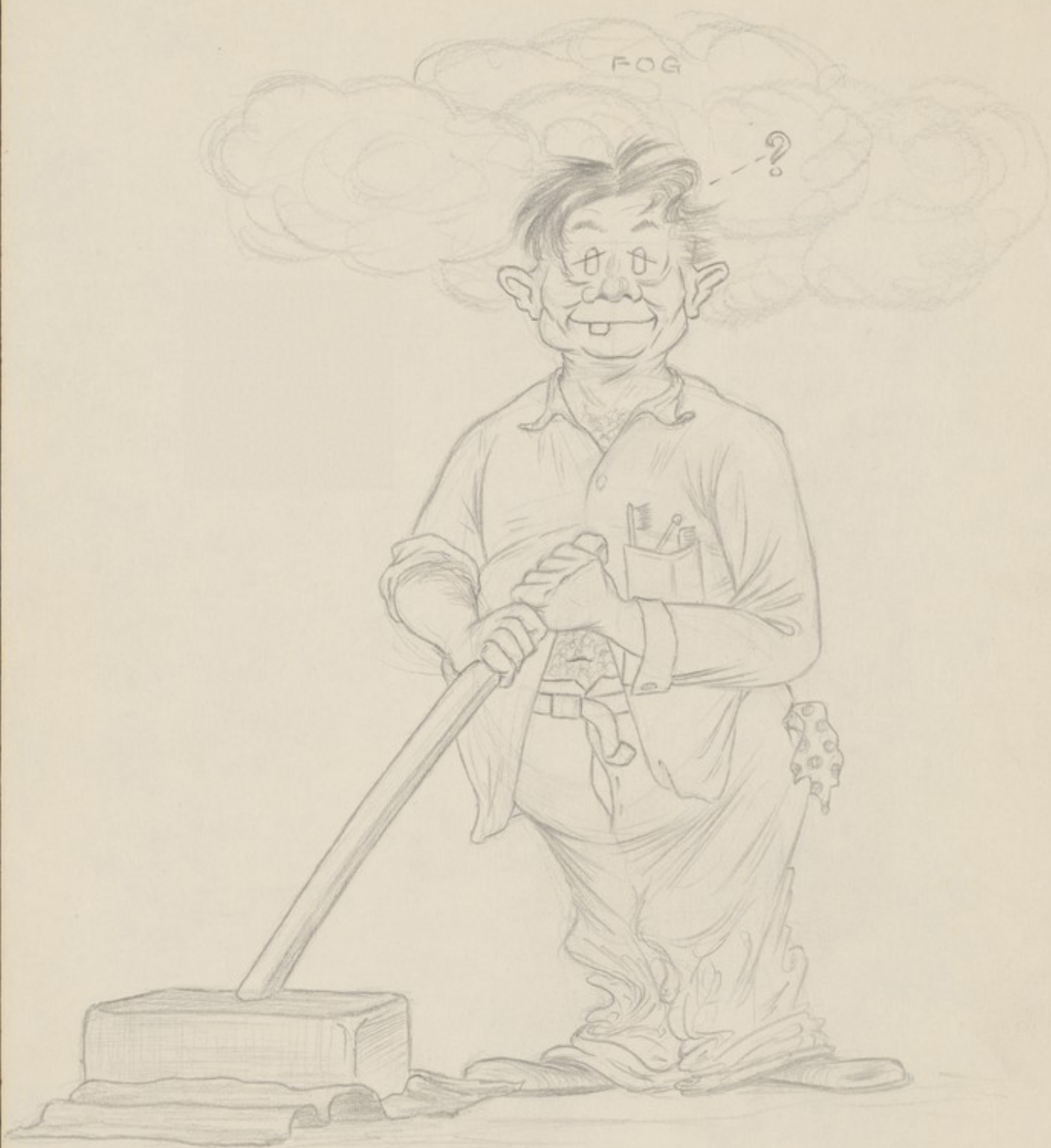
The illustration features a central egg-shaped drawing tablet with a stippled texture. A banner wraps around the middle of the egg, displaying the words 'EGG SHELL', 'DRAWING', and 'TABLET' in large, stylized, red-outlined letters. Various drawing tools are depicted: a palette with brushes on the left, a pencil sharpener, and several pencils. On the right, there are sketches of a landscape with a tree and a small building, and a circular seal with the text 'REGISTERED'. The entire design is rendered in blue and red ink on a light-colored background.



No. 1816

15¢

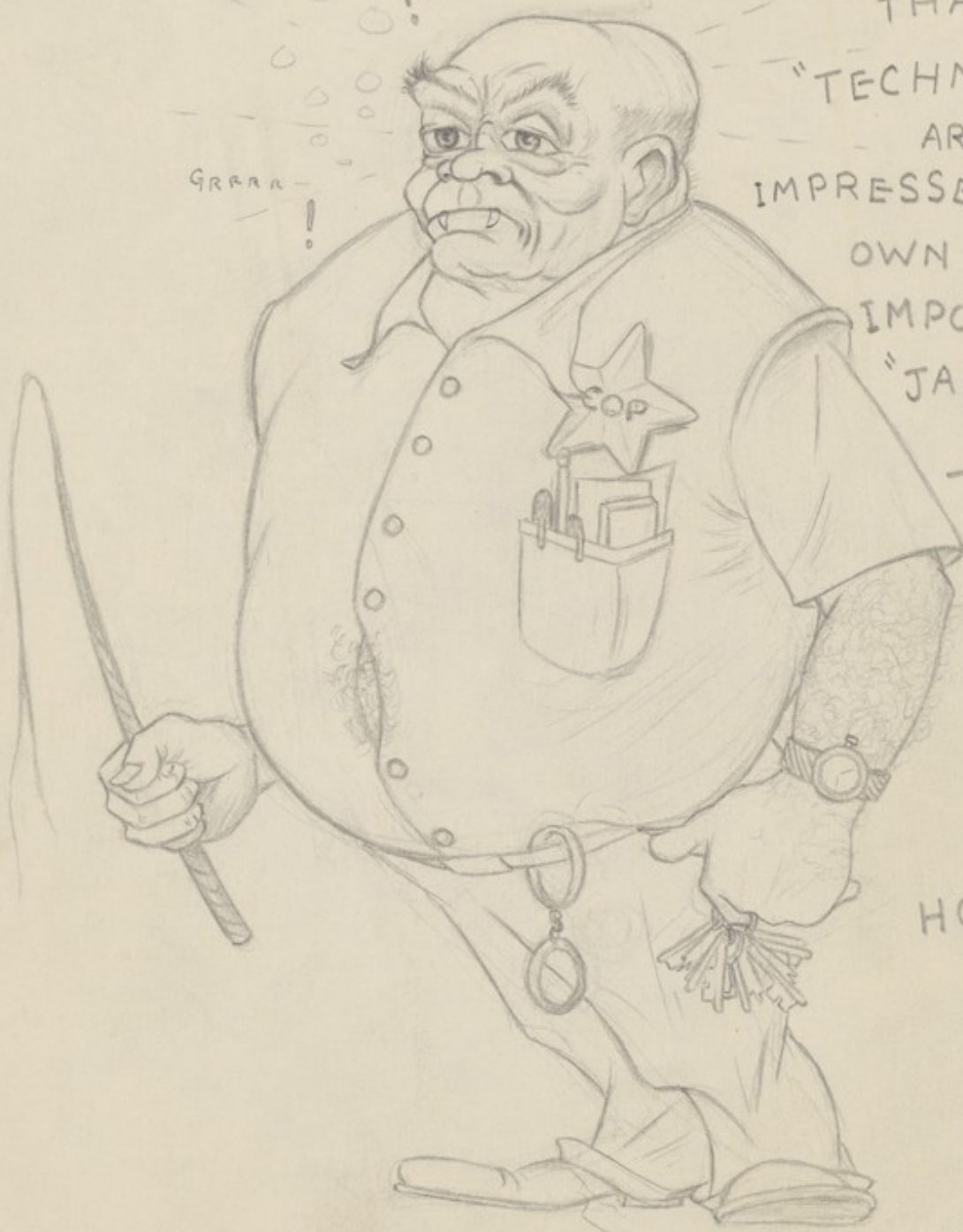




THE
THERAPY

2046868i

WHY IS IT?

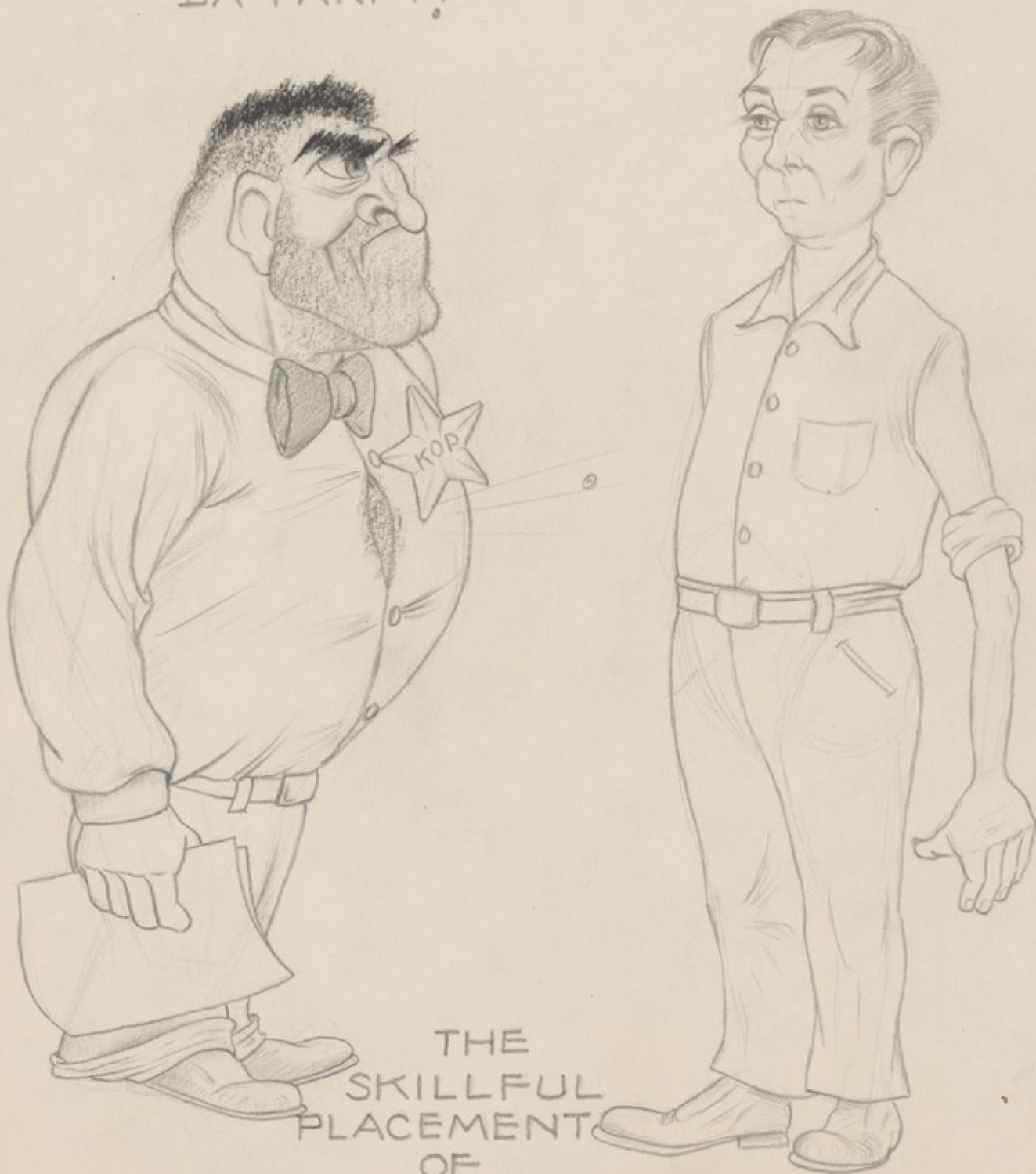


THAT • SOME
"TECHNICIANS" (HA)
ARE SO
IMPRESSED BY THEIR
OWN FOOLISH
IMPORTANCE AS
"JAILERS" ---,
--- THAT THEY
FORGET
THIS IS
"SUPPOSED"
TO BE A
HOSPITAL ?
? ?

2046869i

"YER PAPERS SAY
YER A GRADUATE
DENTIST, —HMMPF!—
—WELL I SAY
YOU'LL WORK ON
DA FARM!"

"YES,
MISTER
FRIGNOLI"

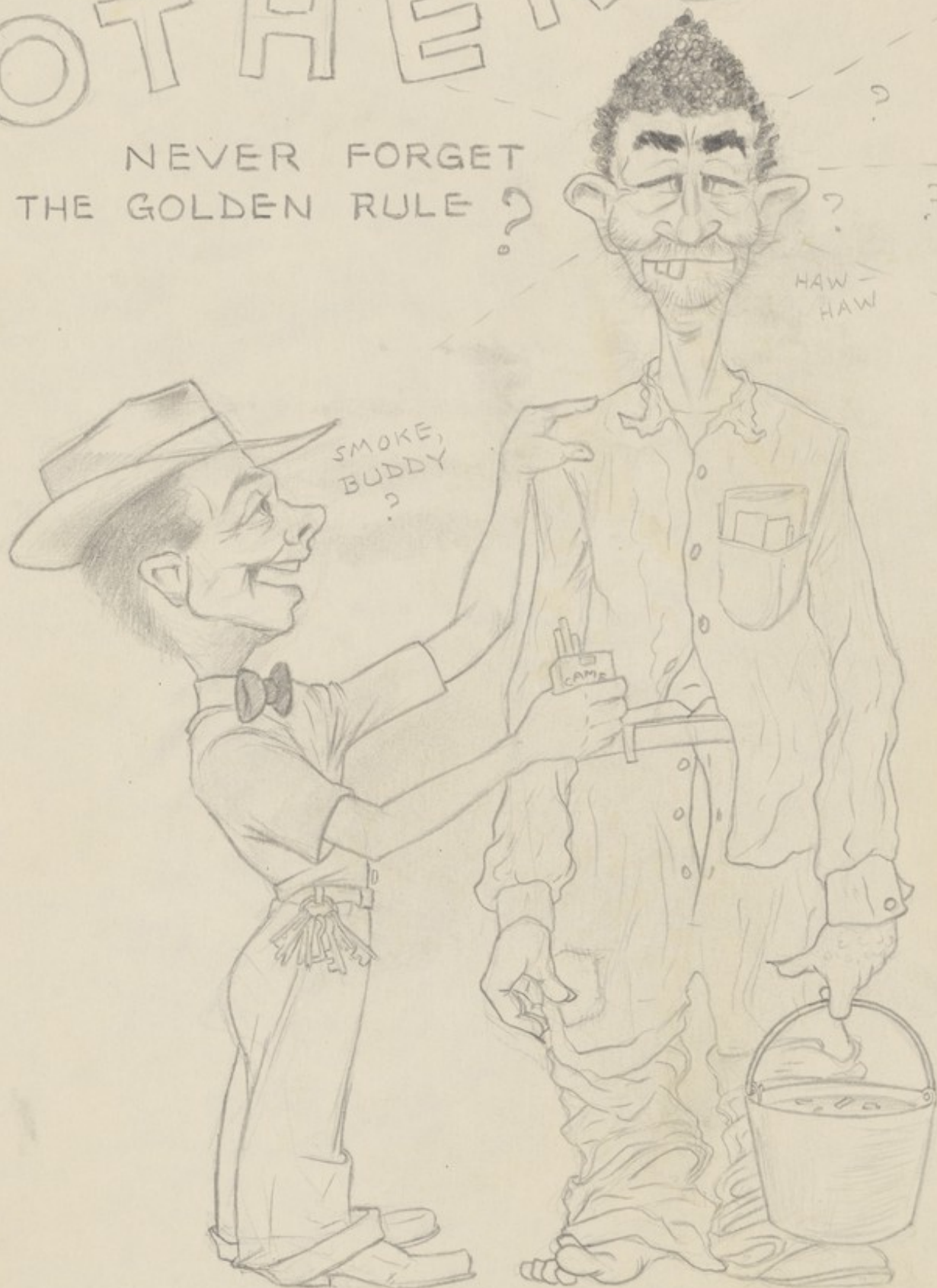


THE
SKILLFUL
PLACEMENT
OF
NEW PATIENTS

2046870i

WHILE OTHERS

NEVER FORGET
THE GOLDEN RULE ?

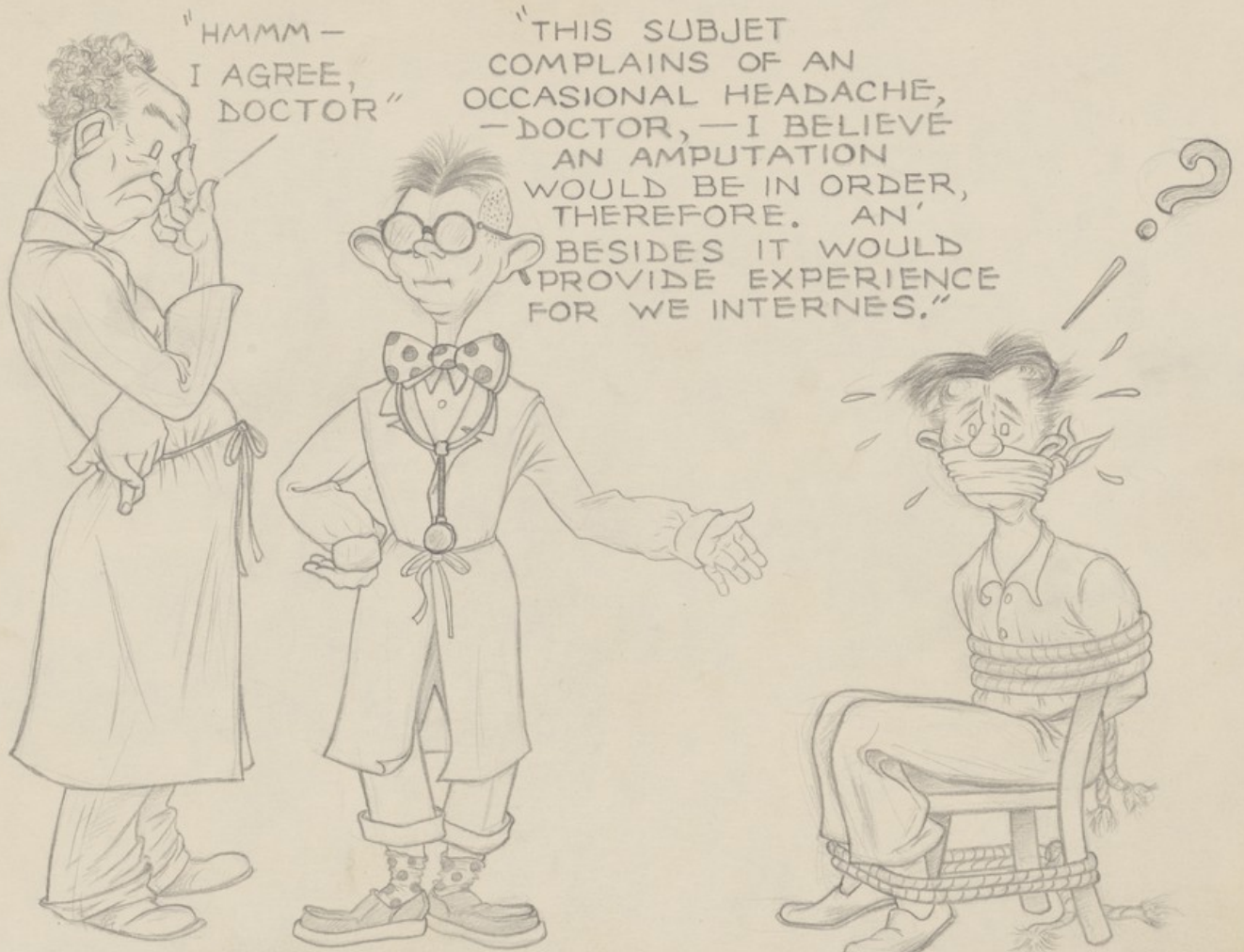


20 46 871i



UNAUTHORIZED LEAVE

2046872i



"HMMM -
I AGREE,
DOCTOR"

"THIS SUBJET
COMPLAINS OF AN
OCCASIONAL HEADACHE,
-DOCTOR, -I BELIEVE
AN AMPUTATION
WOULD BE IN ORDER,
THEREFORE. AN'
BESIDES IT WOULD
PROVIDE EXPERIENCE
FOR WE INTERNES."

STAFF MEETING.

2046873i

6 A.M. COFFEE CLUB

MA-A-N, - THIS IS LIVING!



BERT

2046874i

THE
SUPERIOR
TYPE

(YOU KNOW WHO)

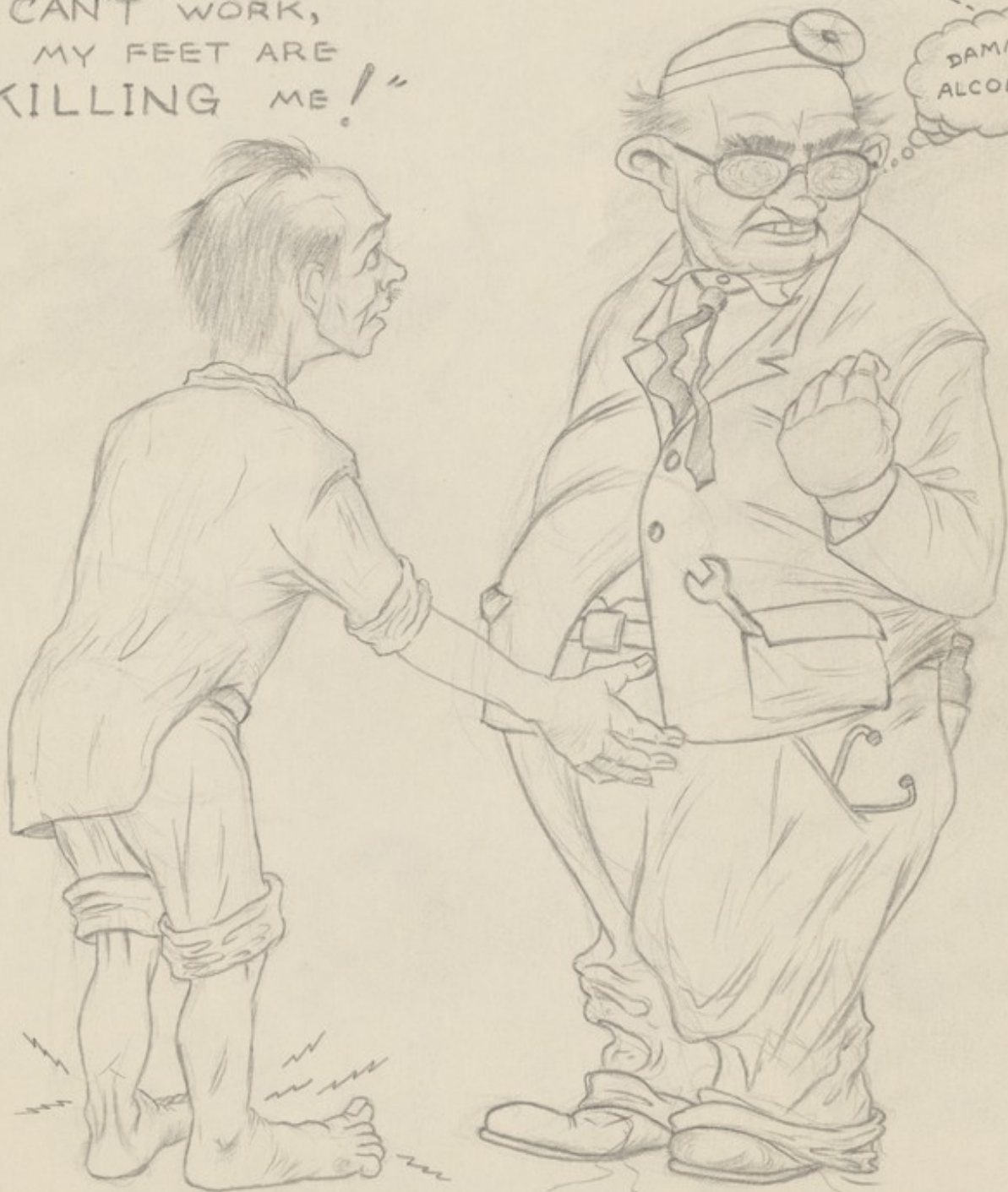


2046875i

" BUT DOCTOR, —
I CAN'T WORK,
MY FEET ARE
KILLING ME! "

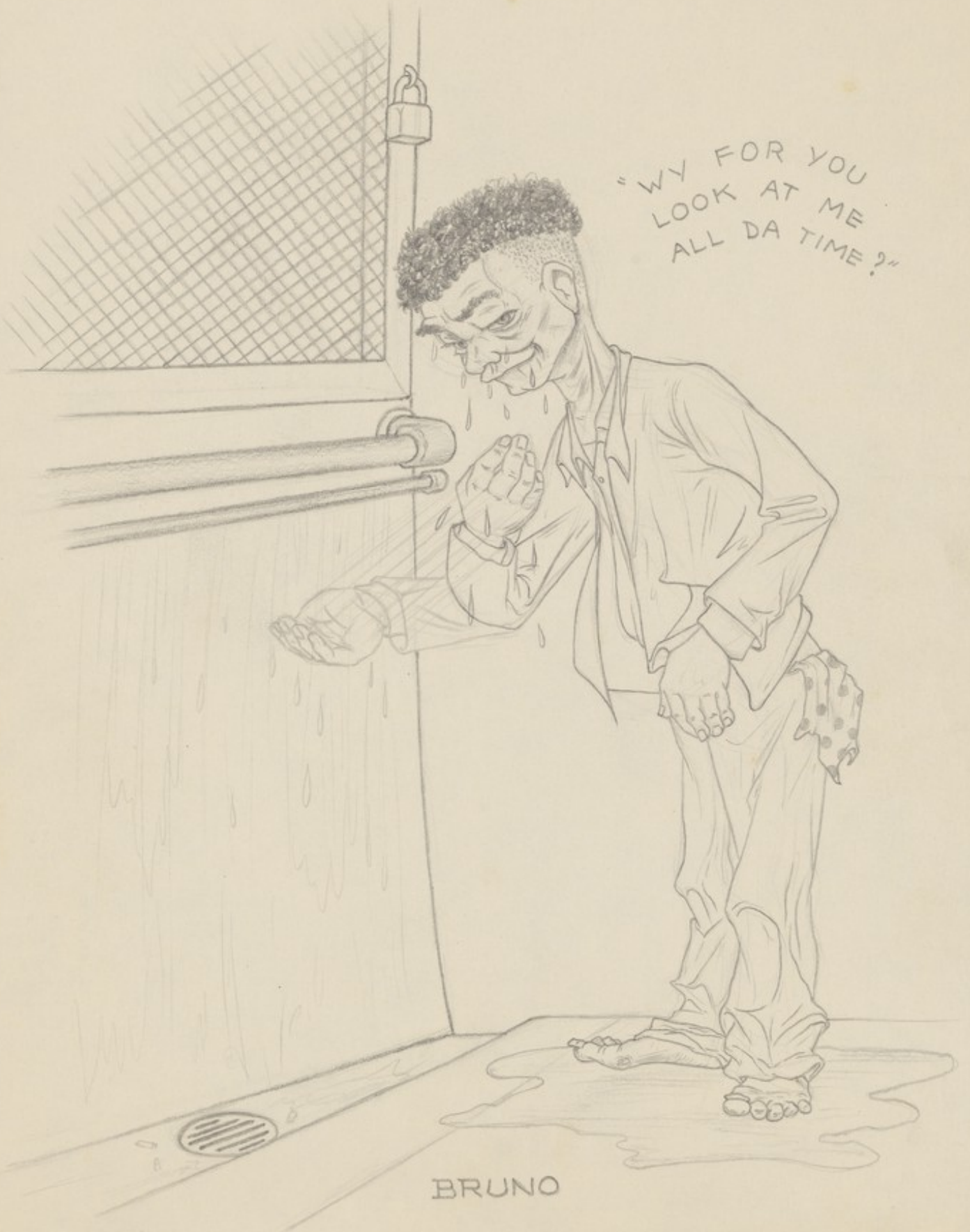
NEVER MIND!
YOU ARE HERE FOR
PUNISHMENT!
— YOU'LL WORK,
— OR ELSE!

DAMNED
ALCOHOLIC



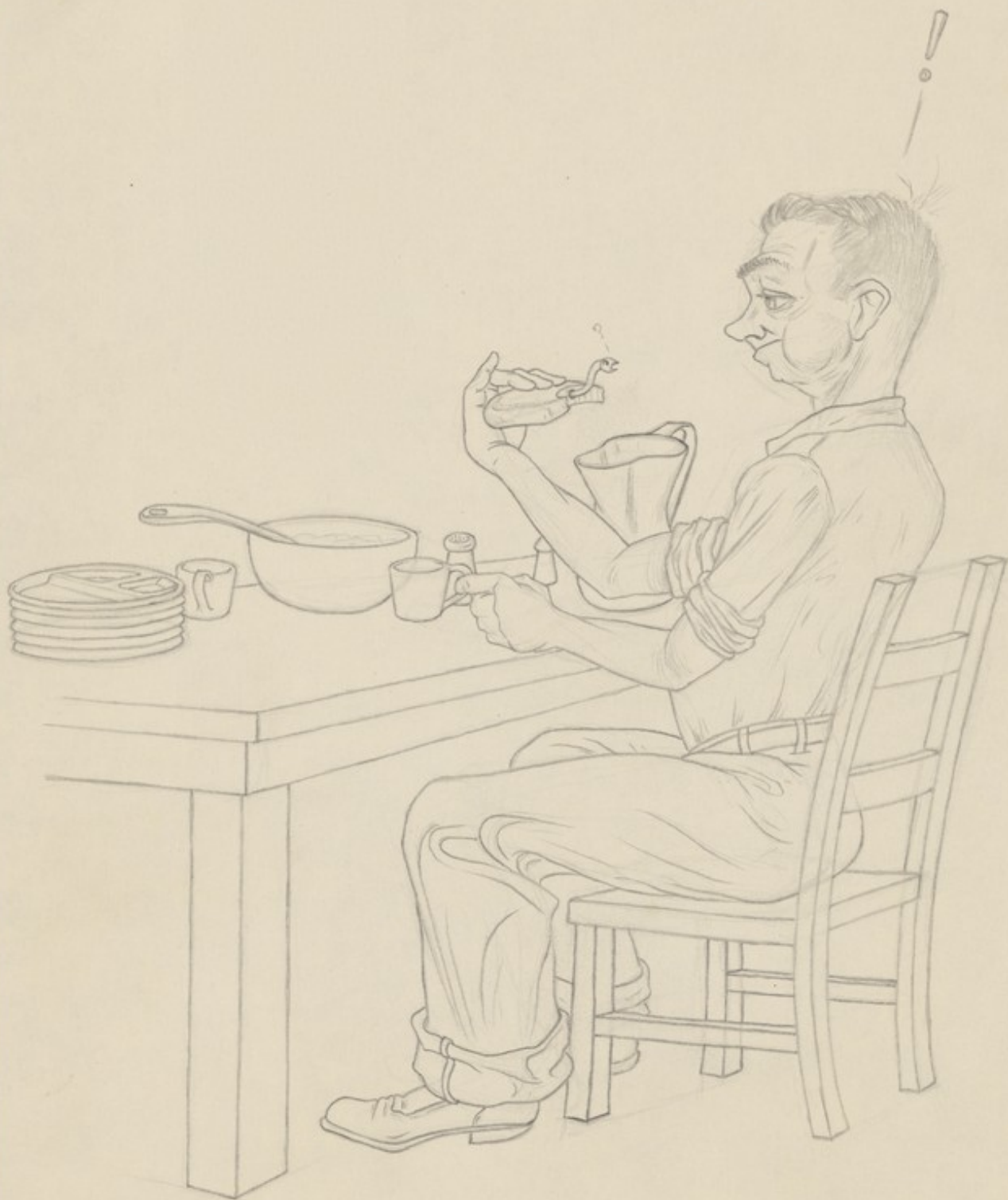
2046876i

"WY FOR YOU
LOOK AT ME
ALL DA TIME?"



BRUNO

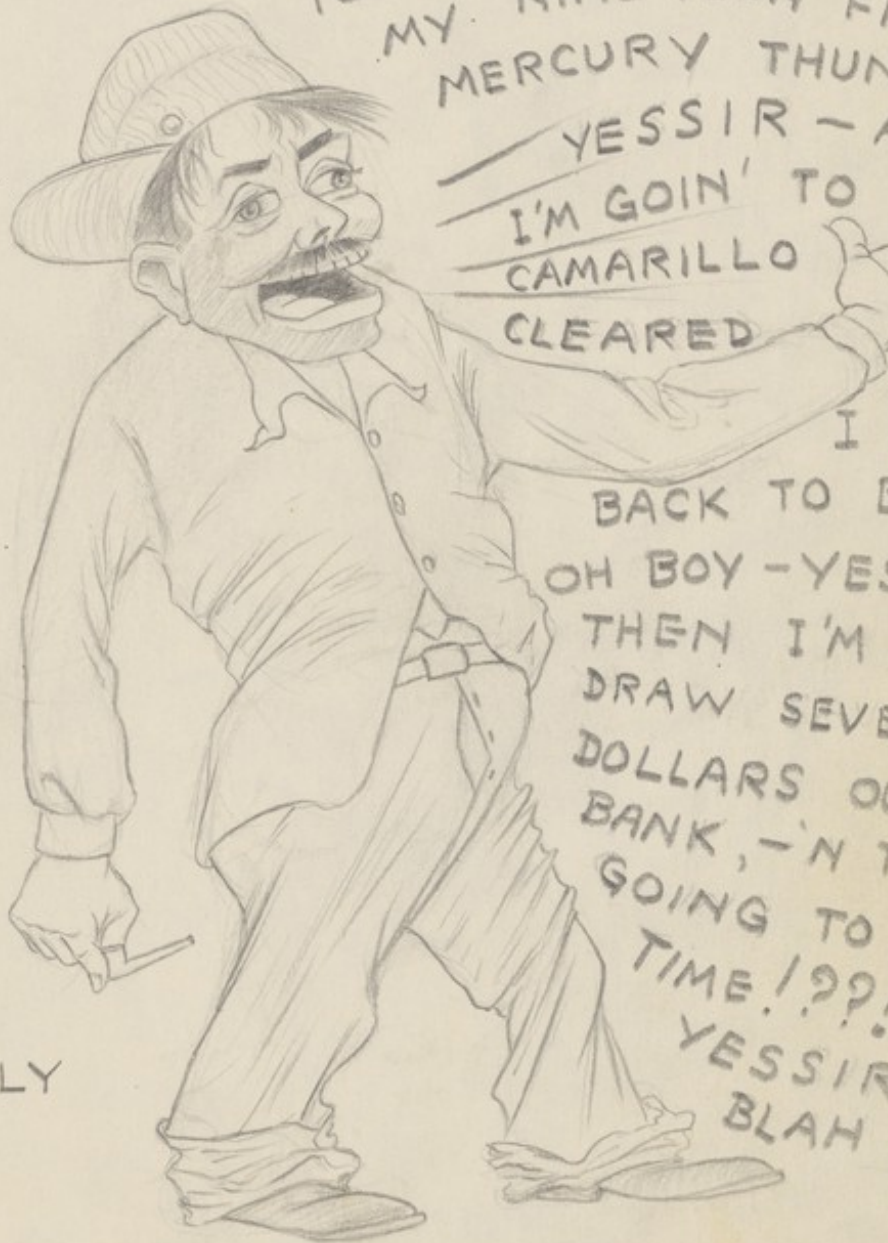
2046877i



THE ENTREE

2046878i

"YES SIR! SUNDAY'S MY BIRTHDAY!
OH BOY - YESSIR, -
MY OL' LADY'S COMING UP WIT
TWENTY-FIVE HUNDRED
GALLONS OF ICE CREAM, - YES
SIR! - AN' THEN I'M GOING
TO ARROWHEAD TUH PICK UP
MY NINE-TEEN FIFTY-SIX
MERCURY THUNDERBOLT



YESSIR - AN' THEN
I'M GOIN' TO
CAMARILLO
CLEARED

TO GET
OUT - SO'SN
I KIN GO
BACK TO BRENTWOOD,
OH BOY - YESSIR, 'N
THEN I'M GOING TO
DRAW SEVENY T'OUSAND
DOLLARS OUTTA THE
BANK, - 'N THEN AM I
GOING TO HAVE A
TIME!??! - OH BOY
YESSIR - AN'
BLAH BLAH BLAH!"

KELLY

2046879i

J
U
L
Y

A
U
G
U
S
T

S
E
P
T

SUN.	MON.	TUE.	WED.	THU.	FRI.	SAT.
				1	2	3
4	5	6	7	8	9	10
11	12	13	14	15	16	17
18	19	20	21	22	23	24
25	26	27	28	29	30	31
1	2	3	4	5	6	7
8	9	10	11	12	13	14
15	16	17	18	19	20	21
22	23	24	25	26	27	28
29	30	31	1	2	3	4
5	6	7	8	9	10	11
12	13	14	15	16	17	18
19	20	21	22	23	24	25
26	27	28	29	30	1	2

40-38.50
47-65.15
54-72.40
61-119.35
68-146.30
75-173.25
82-200.20
89-227.15
96-249.34
103-268.00
110-286.66
117-305.32
124-323.98