

## **Female pelvic organs / Robinson & Sons Ltd.**

### **Contributors**

Robinson & Sons Ltd. (Chesterfield, England)

### **Publication/Creation**

Chesterfield : Robinson & Sons, [between 1960 and 1969?]

### **Persistent URL**

<https://wellcomecollection.org/works/rqabgckk>

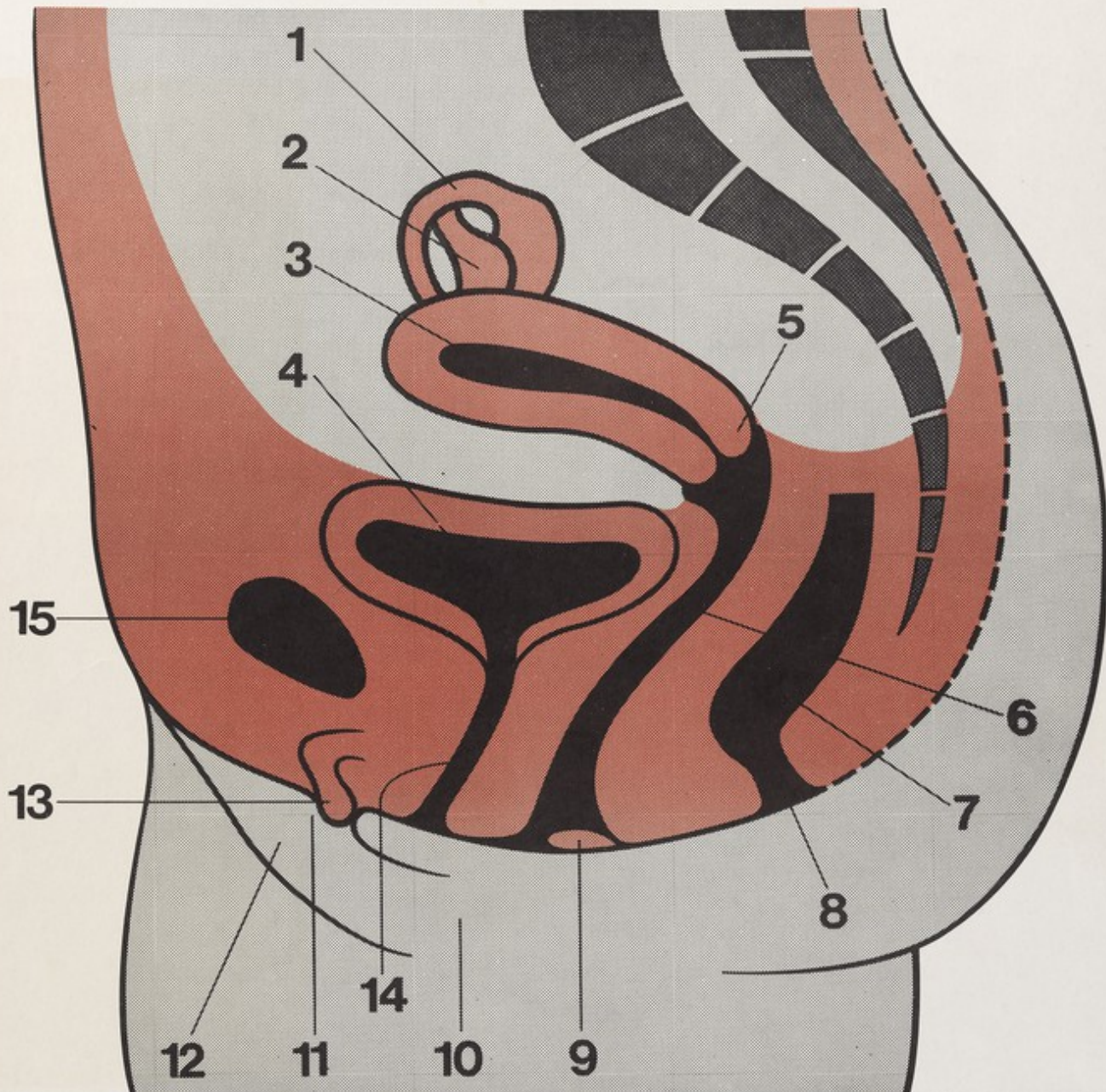
### **License and attribution**

Conditions of use: it is possible this item is protected by copyright and/or related rights. You are free to use this item in any way that is permitted by the copyright and related rights legislation that applies to your use. For other uses you need to obtain permission from the rights-holder(s).



Wellcome Collection  
183 Euston Road  
London NW1 2BE UK  
T +44 (0)20 7611 8722  
E [library@wellcomecollection.org](mailto:library@wellcomecollection.org)  
<https://wellcomecollection.org>

## FEMALE PELVIC ORGANS



- |                   |            |                 |                |
|-------------------|------------|-----------------|----------------|
| 1. Fallopian tube | 4. Bladder | 8. Anus         | 12. Vulva      |
| 2. Ovary          | 5. Cervix  | 9. Hymen        | 13. Clitoris   |
| 3. Uterus         | 6. Vagina  | 10. Outer Labia | 14. Urethra    |
|                   | 7. Rectum  | 11. Inner Labia | 15. Pubic bone |



and



... the invisible external protection by Robinson & Sons Ltd. Chesterfield