

Female reproductive organs / Robinson & Sons Ltd.

Contributors

Robinson & Sons Ltd. (Chesterfield, England)

Publication/Creation

Chesterfield : Robinson & Sons, [between 1960 and 1969?]

Persistent URL

<https://wellcomecollection.org/works/jzwegc9bw>

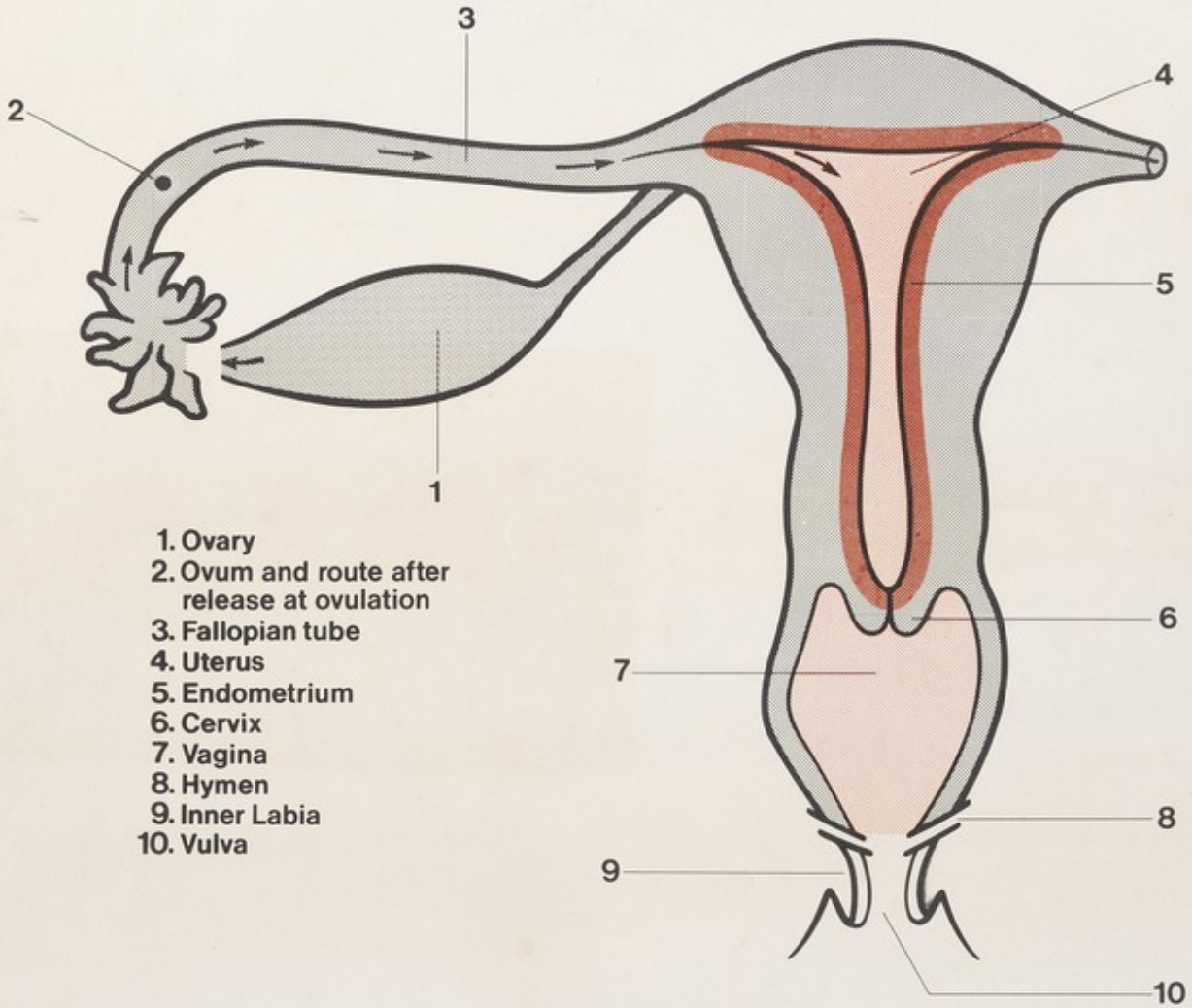
License and attribution

Conditions of use: it is possible this item is protected by copyright and/or related rights. You are free to use this item in any way that is permitted by the copyright and related rights legislation that applies to your use. For other uses you need to obtain permission from the rights-holder(s).



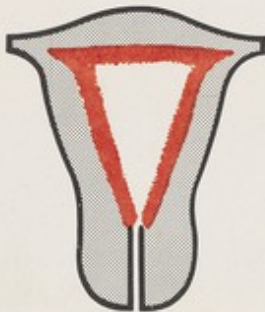
Wellcome Collection
183 Euston Road
London NW1 2BE UK
T +44 (0)20 7611 8722
E library@wellcomecollection.org
<https://wellcomecollection.org>

FEMALE REPRODUCTIVE ORGANS



- 1. Ovary
- 2. Ovum and route after release at ovulation
- 3. Fallopian tube
- 4. Uterus
- 5. Endometrium
- 6. Cervix
- 7. Vagina
- 8. Hymen
- 9. Inner Labia
- 10. Vulva

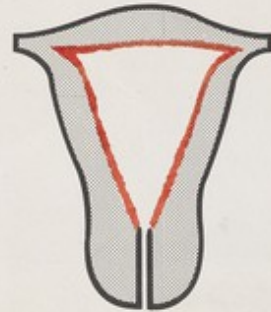
Premenstrual phase



Menstrual phase



Postmenstrual phase



and



... the invisible external protection by Robinson & Sons Ltd. Chesterfield