

The Viavi gynecological plates : designed to educate mothers and daughters concerning diseases of the uterine organs / constructed under the supervision of Hartland Law, Herbert E. Law.

Contributors

Law, Hartland.
Law, Herbert E. 1864-
Viavi Company.

Publication/Creation

San Francisco : The Viavi Co., 1891.

Persistent URL

<https://wellcomecollection.org/works/uy248gw7>

License and attribution

This work has been identified as being free of known restrictions under copyright law, including all related and neighbouring rights and is being made available under the Creative Commons, Public Domain Mark.

You can copy, modify, distribute and perform the work, even for commercial purposes, without asking permission.



Wellcome Collection
183 Euston Road
London NW1 2BE UK
T +44 (0)20 7611 8722
E library@wellcomecollection.org
<https://wellcomecollection.org>

THE
VIAM
Synecological
Plates

M19661

This book is the property of THE VIAVI CO.

No. 139

..... office.

This book is loaned and not sold to

.....
.....
.....
under a certain specific agreement, and if it is found in the hands of any other than those entitled to use it under such agreement, it will be taken possession of by the Viavi Company, and all rights of the borrower under said agreement will be forfeited.



22500483394


504
19

This book is the property of THE VIAVI CO.

©— NOTICE. —©

—♦—

This book is the property of the Viavi Company. It is loaned to subscribers under a specific agreement, and if found in any other hands than those entitled to use it under said agreement, it will be taken possession of by the said company, and all rights to its use under the agreement will be annulled.



Digitized by the Internet Archive
in 2015

<https://archive.org/details/b2040900x>

THE VIAMI



Gynecological Plates

DESIGNED TO EDUCATE

MOTHERS and DAUGHTERS.
CONCERNING

DISEASES OF THE UTERINE ORGANS.

Constructed under the Supervision of

HARTLAND LAW, M. D.

HERBERT E. LAW.

PUBLISHED BY
THE "VIAMI" CO.,

COR. VAN NESS AVE. AND VALLEJO ST. SAN FRANCISCO, CAL.

Entered according to Act of Congress in the year 1891, by
HARTLAND LAW and HERBERT E. LAW,
in the Office of the Librarian of Congress, at Washington, D. C.

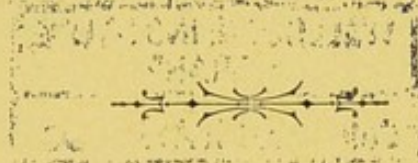
ALL RIGHTS RESERVED

M19661

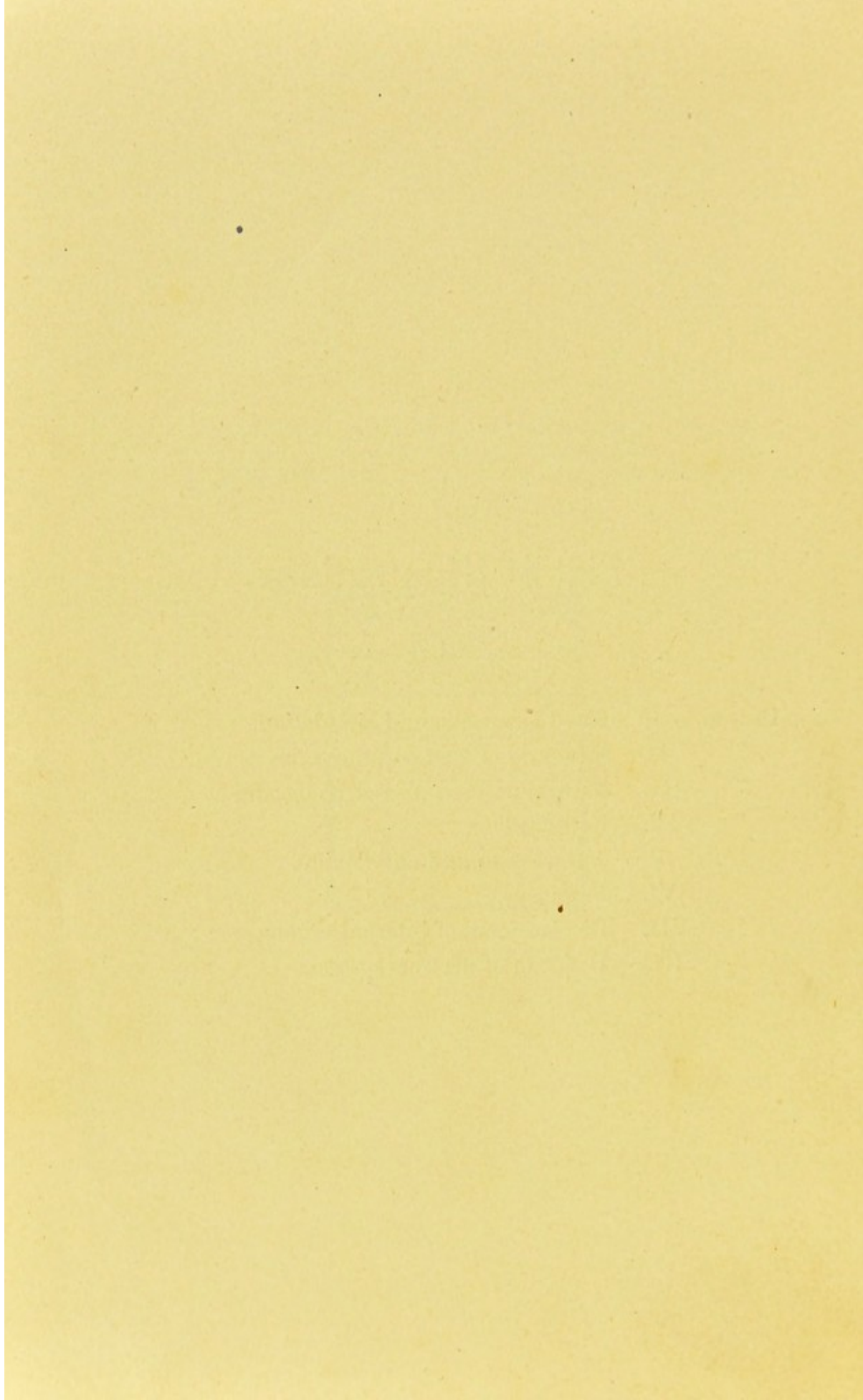
WELLCOME INSTITUTE LIBRARY	
Coll.	welMOMec
Call	
No.	WP 100
	1891
	L 41 v

San Francisco:
The Viavi Press
1891.

List of Illustrations.



- | | | |
|-------|-------|---|
| PLATE | I. | Blood formation and circulation. |
| " | II. | Structure of womb and ovaries. |
| " | III. | Natural position of uterine organs. |
| " | IV. | Retroversion. |
| " | V. | Anteversio <i>n</i> and anteflexio <i>n</i> . |
| " | VI. | Prolapsus. |
| " | VII. | Displacement of internal organs. |
| " | VIII. | Diagram of nervous system. |



Introduction.



It is asserted by the celebrated Dr. Cowan, that "probably not one woman in one thousand enjoys perfect health." Another eminent authority says: "Nine-tenths of women are sick, and four-fifths of the difficulties have their origin in the uterine organs." The eminent Dr. Gaillard Thomas states: "Probably no woman ever goes through life without, at some period, suffering from leucorrhœa."

There is no single condition of disease more prevalent and more thoroughly responsible for unhappiness, misery and the transmission of the same to children, than diseases of women, and for the most part, they are little understood.

It is our desire to remedy this evil, not alone by curing those who are suffering, but also by educating daughters that their lives may possess no taint of the misery and unhappiness, consequent on these diseases. Prevention of disease is better than its cure, and the more thoroughly these diseases are understood, the more healthy will be the generation to come.

♀ EUCORRHEA OR ♀ WHITES.

MOST COMMON DISEASE THAT AFFLICT WOMEN.

SYMPTOMS.

Heat, soreness and swelling about the vagina.

Discharge white at first, afterwards yellow or green.

Discharge at first is thin, which becomes more profuse and thicker.

Pain in the back, lower part of the abdomen, breasts and various parts of body.

Hiccough. Depraved appetite. Sour stomach.

Dyspepsia. Fainting fits. Palpitation of the heart.

Face pale; eyes are hollow, with dark circles.

Cold hands and feet.

Weeping without cause. A feeling of languor. Dejection.

Involuntary sadness. Melancholy. Hypochondria.

May result in scrofula or consumption.

Marked more by its effects on the system than by great pain and uneasiness in parts affected.

CAUSES.

Scrofulous tendencies. Improper habits of life.

Living in poorly ventilated rooms.

Improper method of dress. Weight of clothing on hips.

Exposure of lower extremities to cold.

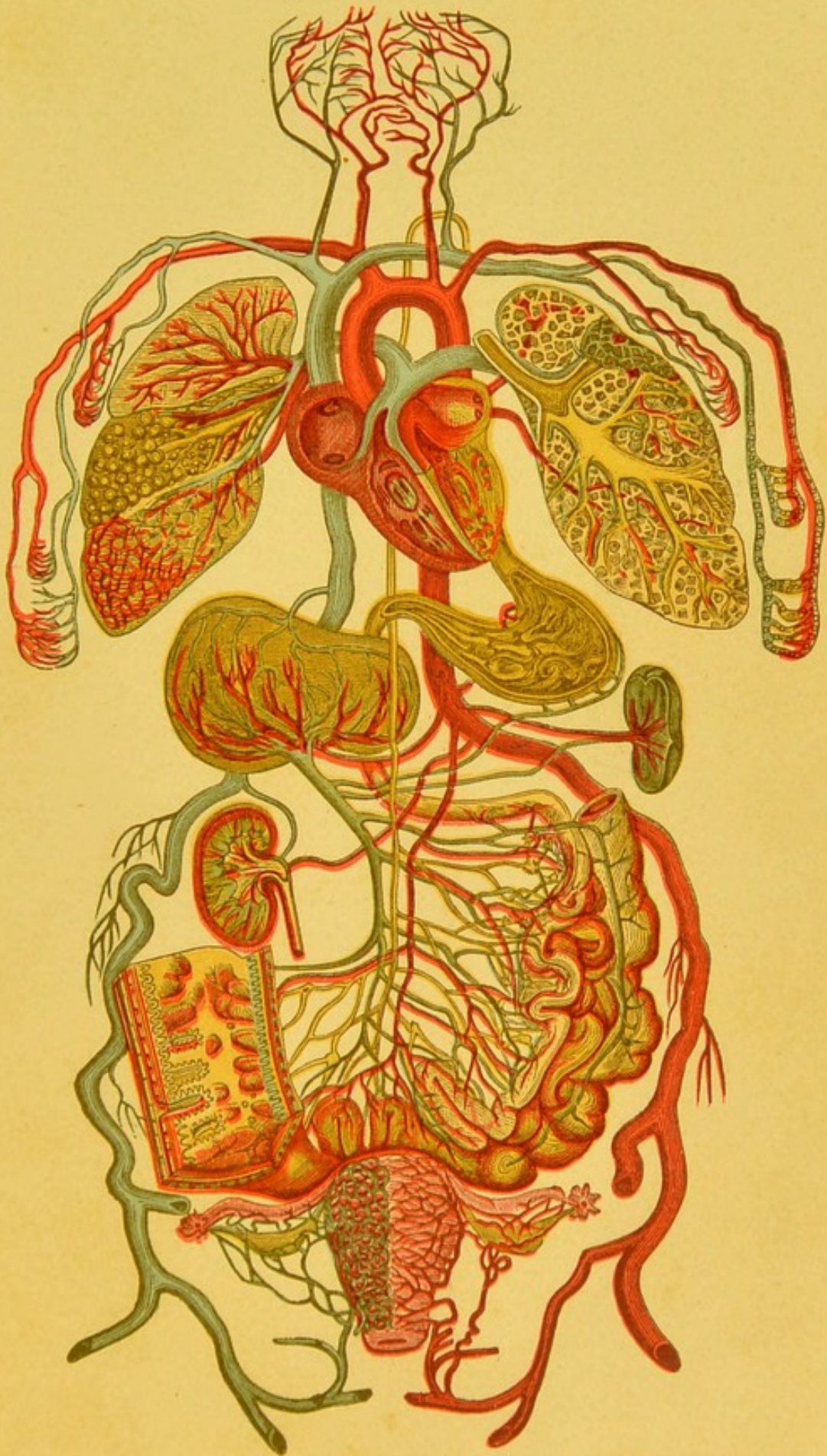
Nervousness. Excessive mental strain.

Overwork or exertion, such as standing in stores or running sewing machine. Sedentary habits.

Excessive copulation, especially by newly married people.

Hereditary.

PLATE I.



BLOOD FORMATION AND CIRCULATION.

COPYRIGHTED BY
H. & H. E. LAW,

1891.



ABSENCE OF MENSTRUATION.

SYMPTOMS.

- An effort to menstruate, with shiverings.
 - Pain in small of the back and lower part of abdomen.
 - Aching around the thighs.
 - Weight and fullness of the womb.
 - Pain and throbbing in the head.
 - Pain in side, stomach and bowels.
 - Great weakness and tired feeling.
 - Often co-existent with leucorrhœa and having similar symptoms.
-

CAUSES.

- Debility.
- Mental depression.
- Luxury and indolence.
- Conjestion and low state of vital powers.
- Imperforate hymen.
- Muscular inactivity of uterus.
- Non-developement.

PAINFUL MENSTRUATION AND DYSMENORRHOEA.

SYMPTOMS.

More or less pain in the pelvis.

Weakness and distress in the "small of the back."

Tenderness and swelling of the breasts.

Headache.

Sometimes sudden pains seize patient, which become so agonizing as to render her almost delirious.

Clots of blood are formed in the uterus.

Sometimes the lining of the uterus is thrown off and expelled, either in clots, shreds or entirety, with violent bearing down efforts, and intervals of comparative ease like those of childbirth.

CAUSES.

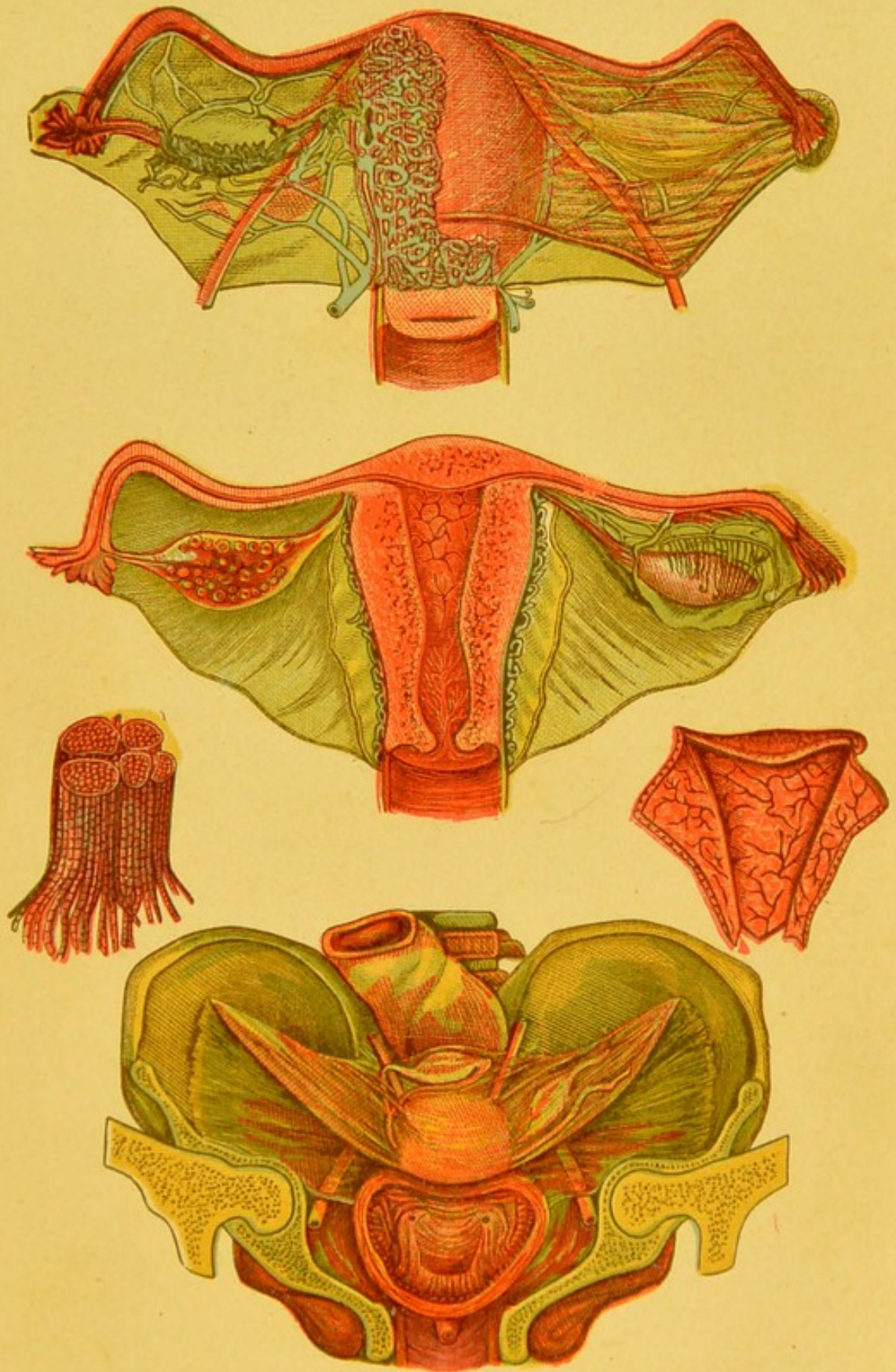
Sudden colds at periods or soon after delivery.

Exhaustion and indulgence.

Unnatural excitement of organs.

Excessive coition.

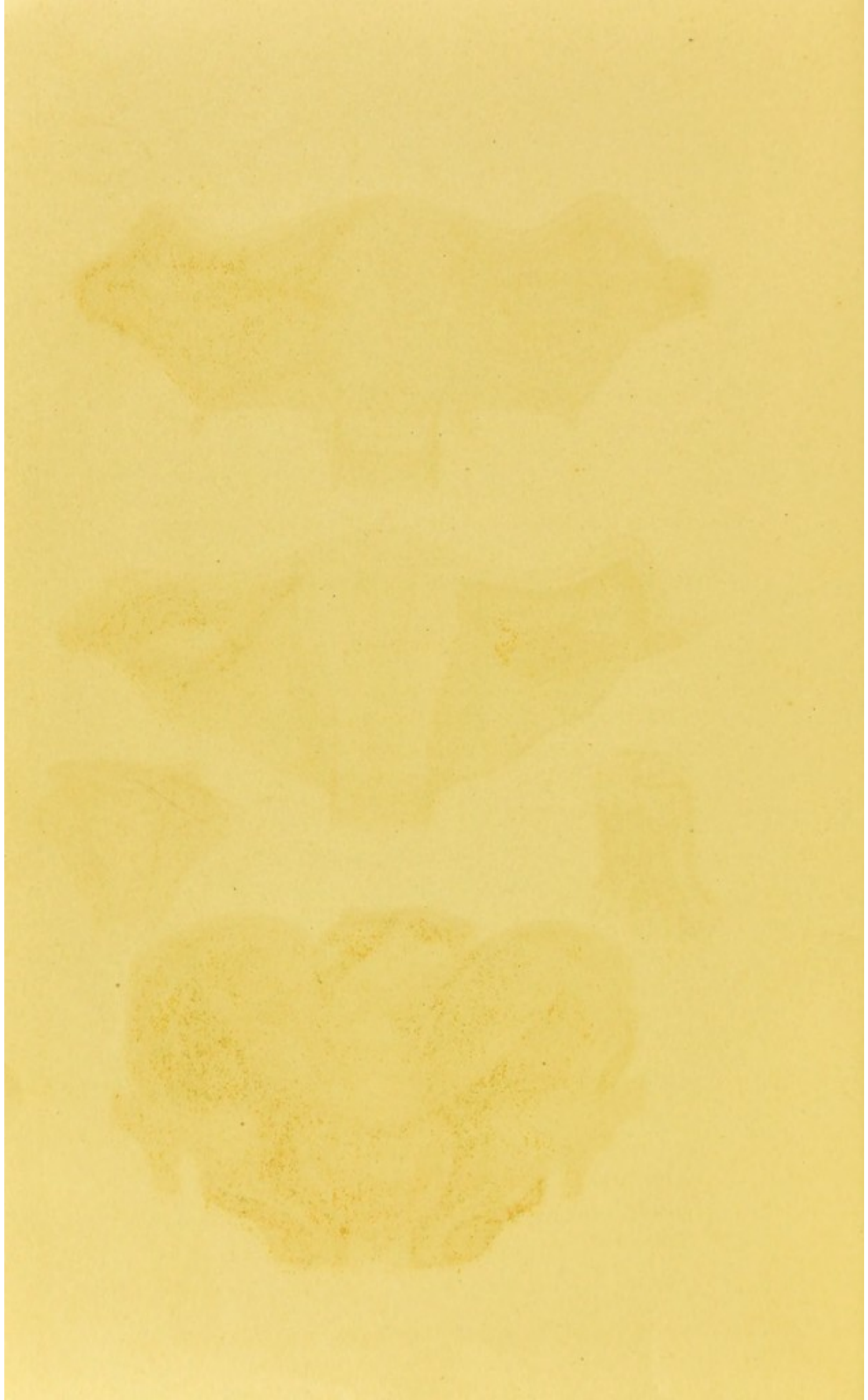
PLATE II.



STRUCTURE OF WOMB AND OVARIES.

COPYRIGHTED BY
H. & H. E. LAW.

1891.



SUPPRESSED AND IRREGULAR MENSTRUATION.

SYMPTOMS.

Suppression partial or complete.
Headache. Nausea. Pain in back.
Loss of appetite. Inability to sleep.
Unusual sense of exhaustion.
Suppression frequently occurs in young girls during
first years of development.
Symptoms sometimes violent, at other times but little
disturbance ensues.

CAUSES.

Retarded or abnormal development. Debility.
Bodily injuries. Mental shocks
Inflammation of ovaries or womb.
Colds and exposure after being heated.

PROFUSE OR EXCESSIVE MENSTRUATION.

SYMPTOMS.

Flow excessive, too often or too long.
Inflammation of the parts. Weakness from loss of blood
Dizziness. Headache. Restlessness. Pale skin.
Loss of ambition.

CAUSES.

Accidents. Excessive eating and drinking.
Frights and mental excitement.
Abortion and prevention.
Excessive sexual excitement.

CHLOROSIS
OR
GREEN SICKNESS.

SYMPTOMS.

Most frequent during sexual development.
Menstrual derangements.
Capricious, despondent or hysterical moods.
Skin pale, cold or hot and clammy.
Lips colorless. Eyes sad.
Patient listless and easily fatigued.
Palpitation of the heart by exercise.
Dry hacking cough. General pallor.
Loss of strength.
Symptoms of consumption are present.
Broken sleep. Singing in the ears.
Specks before the eyes.
Stomach loaths food. Craves chalk, ashes, even insects.

CAUSES.

Are hereditary.
Often no cause can be noticed, but patient keeps growing worse.

INFLAMMATION OF THE UTERUS.

SYMPTOMS.

- Chilliness, followed by heat and fever.
- Uneasiness in the region of the womb.
- Occasional sharp pains in the back and darting forward down the thighs.
- Pain over womb, increased by pressure in coughing.
- Slight fever. Some headache.
- Loss of appetite.
- Coition is painful and distasteful.
- Stomach swollen and sometimes large.
- Itching and burning sensation in the vagina.
- Frequently an irritation of the bladder and rectum, compelling evacuation often.
- Clear glairy, sometimes yellowish or even bloody, discharge from vagina.
- Bearing down pains in lower part of abdomen.

CAUSES.

- Exposure during periods.
- Inflammation of vagina.
- Suppressed menstruation.
- Conjestion, caused by weight of clothing.
- Excessive or violent intercourse.
- Certain constitutional diseases.
- Foreign bodies in the womb.
- Attempts at abortion.
- Injections of cold water after coition.

CHRONIC INFLAMMATION OF THE WOMB.

—◆◆◆—
VERY FREQUENT AMONG MARRIED WOMEN.

SYMPTOMS.

May exist a long time before patient's attention is attracted by severe symptoms.

Dragging sensation in loins and pelvis, increased by muscular effort and exercise.

At first glairy white discharge, usually stringy, not infrequently streaked with blood one or two weeks after cessation of flow.

Sooner or later the periods are deranged.

The womb contains clots, which are expelled, accompanied by pain.

Coition is painful.

Persistent headache on top of the head.

Usual signs of pregnancy are noticed.

Vomiting. Area around nipples darkened.

Enlargement and unusual feeling about the breasts.

Flatulency. Gas in the stomach.

May result in miscarriages or even sterility.

CAUSES.

—◆◆◆—
Local affections of genital organs.

Prolonged mental emotion. Imperfect nutrition.

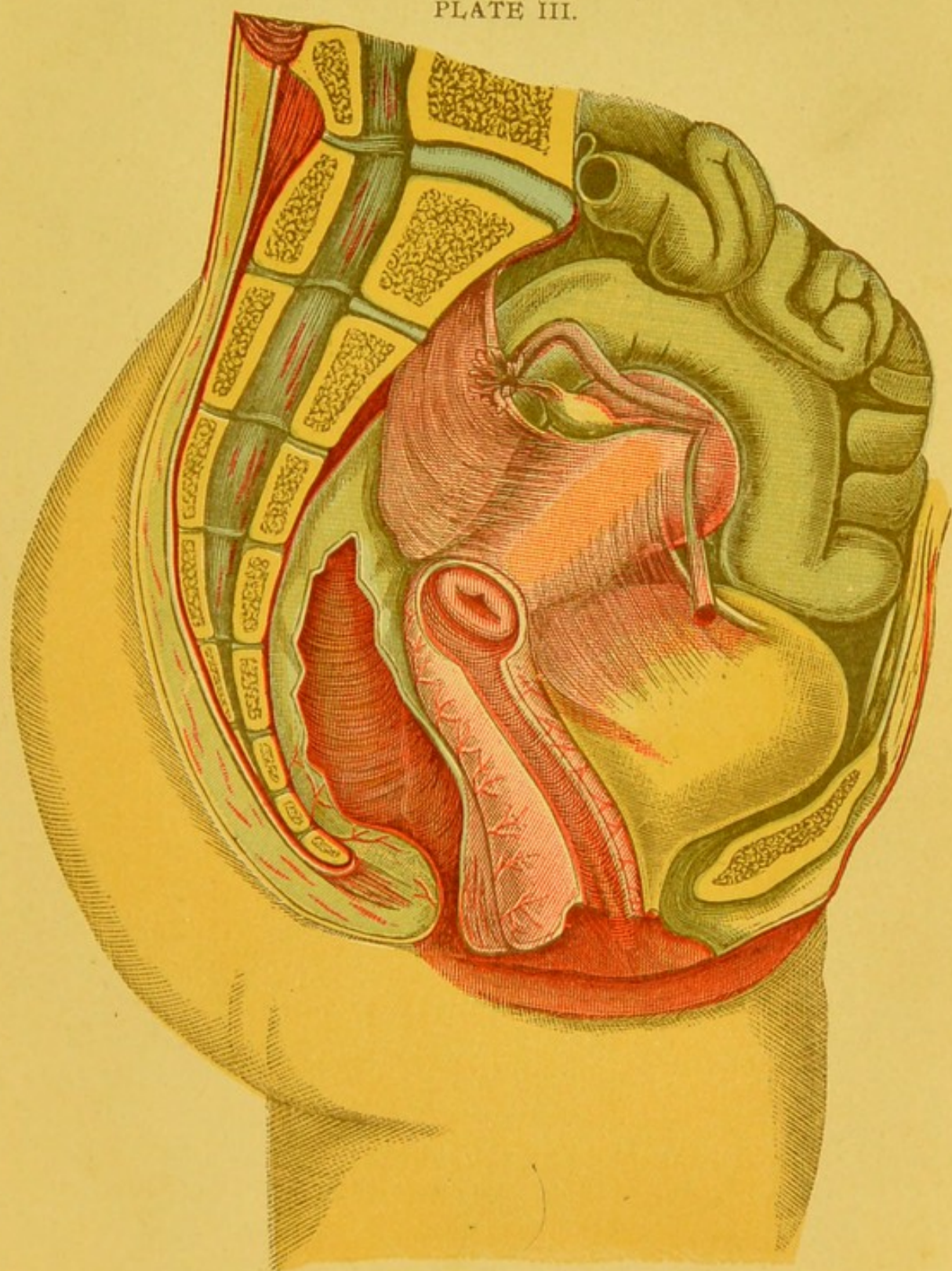
Injury to womb during labor. Prolonged nursing.

Exposure during menstruation. Frequent confinements.

Insufficient rest and quietness after delivery.

Preventing conception. Attempts at abortion.

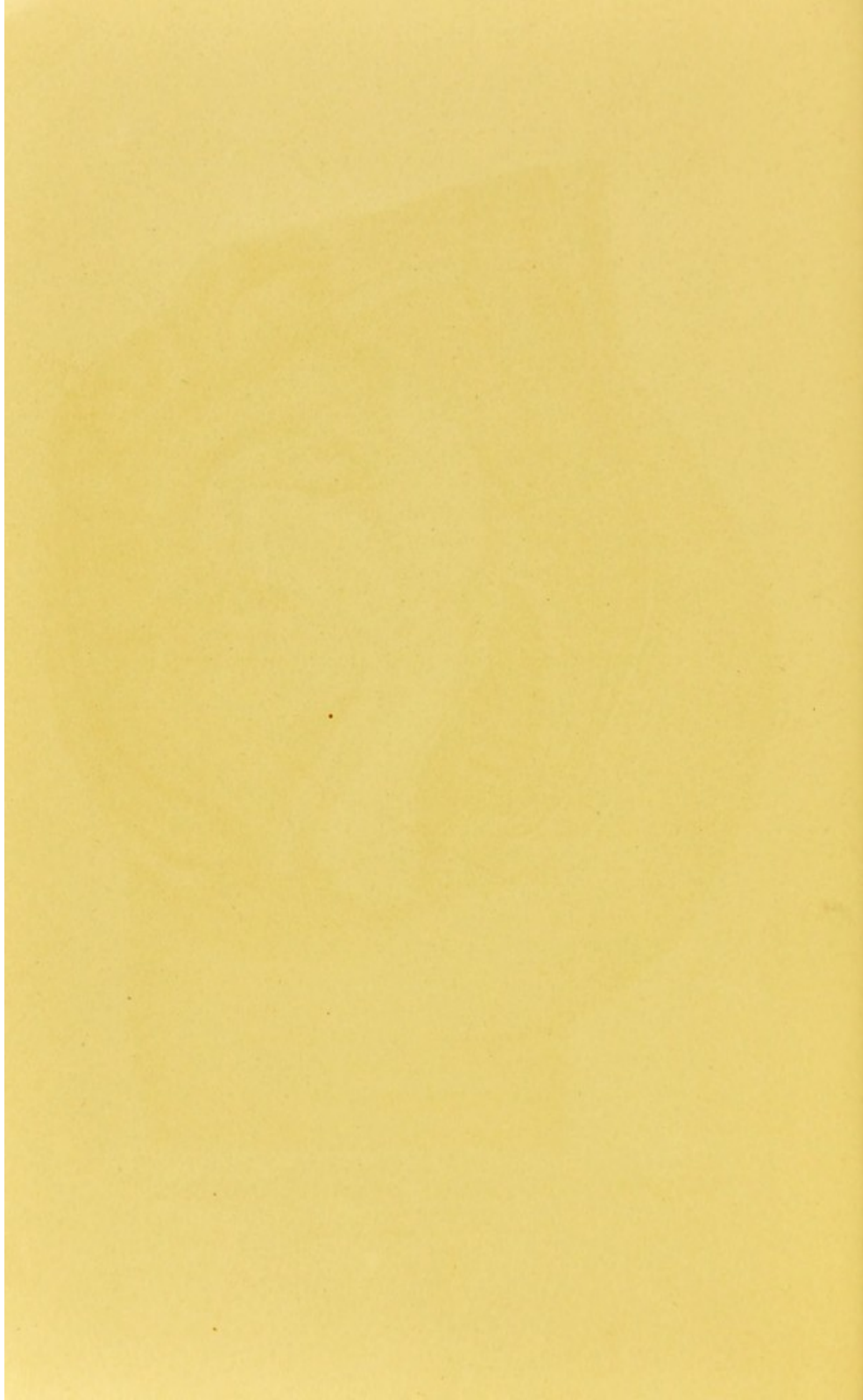
PLATE III.



NATURAL POSITION OF UTERINE ORGANS.

COPYRIGHTED BY
H. & H. E. LAW.

1891.



CANCER OF THE WOMB.

SYMPTOMS.

- Difficult to recognize at first.
Tenderness upon movement in pelvis.
Profuse menstruation and leucorrhœa.
Discharge offensive; often contains clots of blood and shreds of flesh.
Pain may be sharp, obstinate or intermittent; patient becomes weak and appetite impaired
Skin usually a peculiar straw color.
The womb is hard, unyielding and rough; the slightest touch causes it to bleed.
The symptoms must not be confounded with those of tumors, ulceration in vagina or rectum or syphilis, which may be contracted by the most virtuous.

CAUSES.

- Not easily determined. Not hereditary.
Not constitutional or "in the blood."
Supposed to be local irritation.

ULCERATION OF WOMB.

SYMPTOMS.

- Leucorrhœa, blood and purulent. Profuse menstruation.
Intercourse produces pain and hemorrhage.
Pain when walking. Loins and back ache.
Nervousness and sometimes hysteria.

CAUSES.

- Displacements. Friction against the cervix.
Abuse of sexual intercourse. The use of pessaries.
Injuries to the small end of the womb.

RETROVERSION OF WOMB.

—◆◆◆—
MOST COMMON FORM OF DISPLACEMENT.

SYMPTOMS.

The top of womb tipped backward toward, or on the rectum.

The womb is usually inflamed and heavy.

Lower end looks forward.

Constipation and straining. Piles.

Difficulty in passing water.

Bladder sometimes feels as if stretched.

Liver troubled and biliousness sometimes present.

Dull, aching and constant pain in the back, relieved by lying upon the face.

A sense of weight in the rectum.

Frequently lameness in legs and feet.

CAUSES.

—◆◆◆—
Congestion, rendering the upper part of the womb heavy.

Enlargement of the womb.

Weakness of the muscles which hold up the womb.

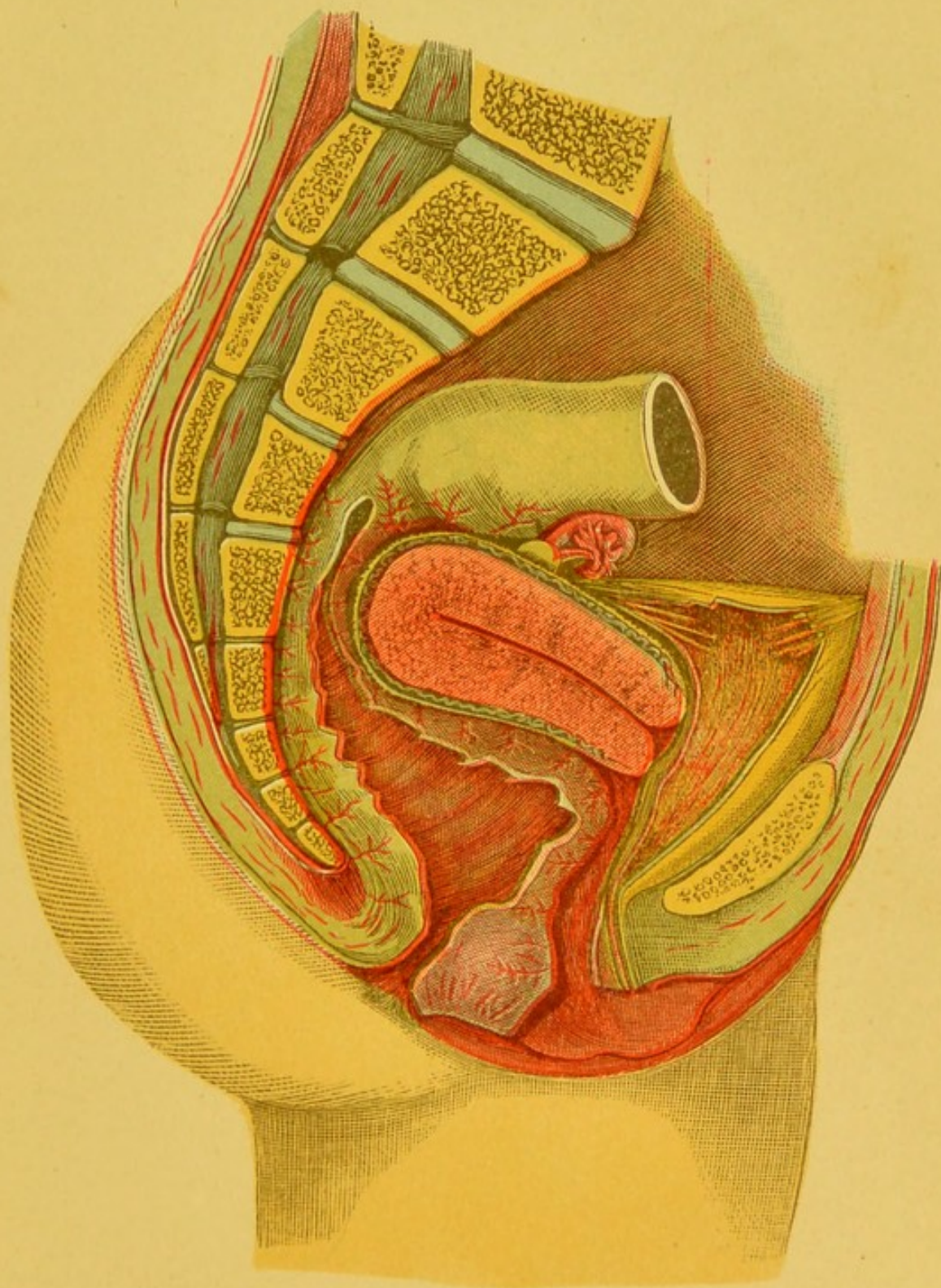
Pregnancy.

Lack of vitality. General debility.

Tumors. Lifting. Straining.

Heavy clothing,

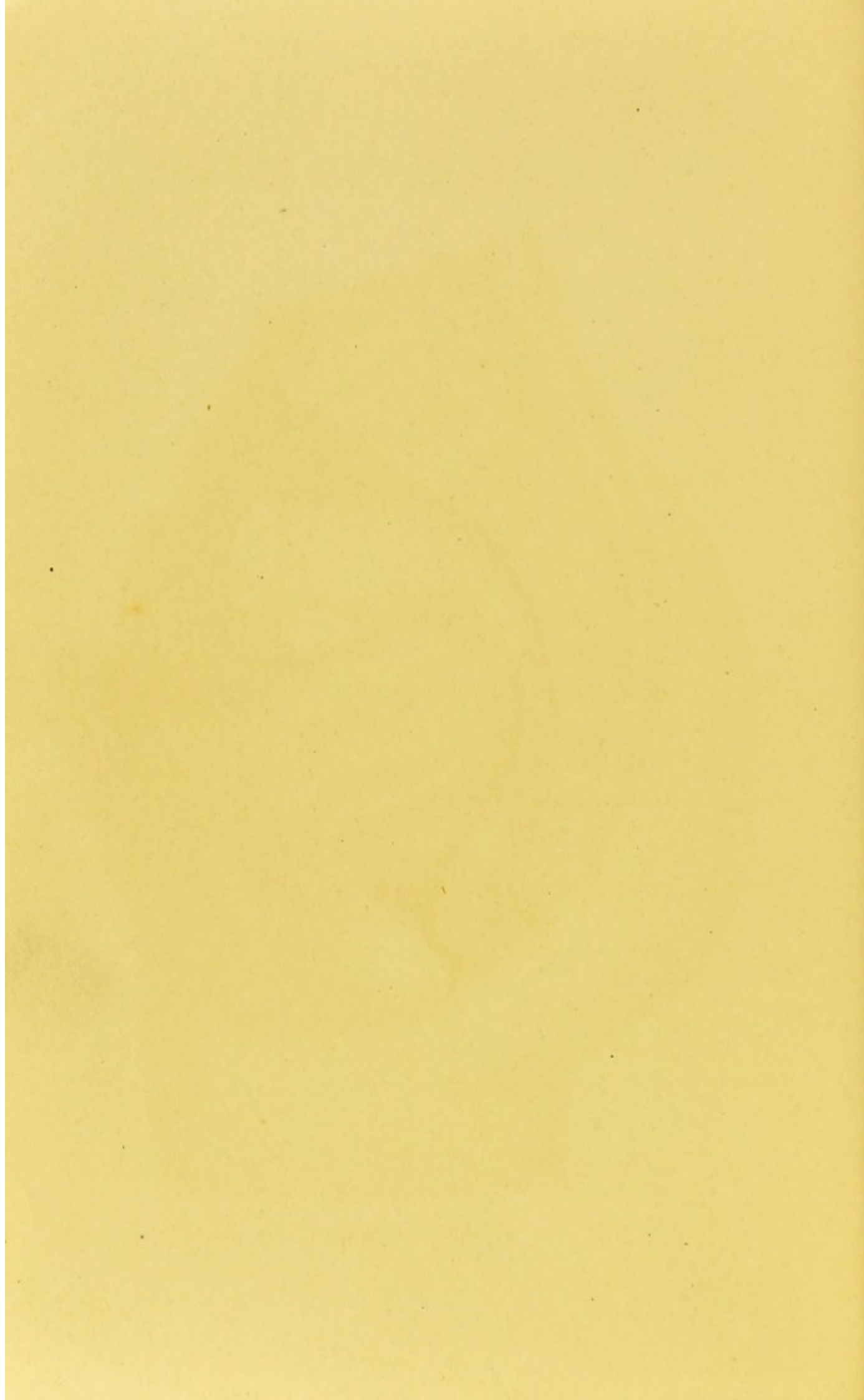
PLATE IV.



RETROVERSION.

COPYRIGHTED BY
H. & H. E. LAW.

1891.



ENLARGEMENT OF THE WOMB.

SYMPTOMS.

- Increased size of the uterus.
 - Pain in loins and back.
 - Headache, especially on top of the head.
 - Languor and debility.
 - Derangements of menstruation.
 - Leucorrhœa.
 - Pain during intercourse.
 - Enlargement of the breasts.
 - Derangements of the stomach.
 - Painful evacuation of rectum and bladder.
 - Complications such as hysteria, dyspepsia and disorders of the ovaries.
-

CAUSES.

- Premature rising from bed after confinement.
- Failure of womb to reduce after delivery.
- Abortion. Displacements.
- Growth of tumors in the womb.
- Presence of tumors in abdomen.
- Inflammation of the tissues of the uterus.
- Excessive sexual indulgence at menstrual period.

ANTEVERSION OF THE WOMB.

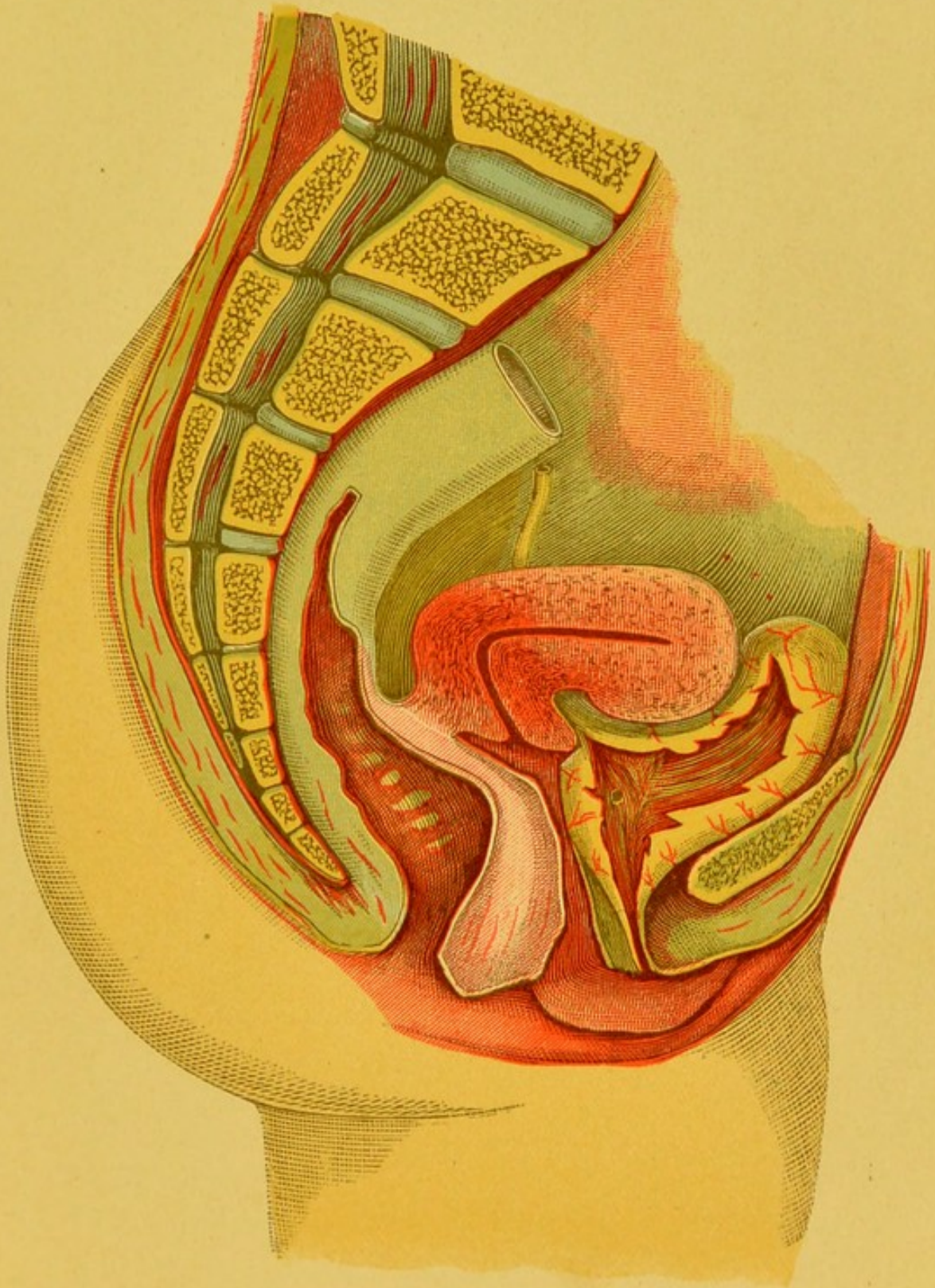
SYMPTOMS.

- Womb tipped forward.
 - Desire to urinate frequently.
 - Inflammation of the bladder.
 - Itching and smarting after urinating.
 - Intense pain in region of bladder.
 - Headache and backache, relieved by lying upon the back.
 - General weakness.
 - Kidney trouble.
 - Nervousness.
-

CAUSES.

- Weakness of the muscles.
- Heavy and hard work.
- Mental excitement.
- Accidents.

PLATE V.



ANTEVERSION AND ANTEFLEXION.

COPYRIGHTED BY
H. & H. E. LAW,

1891.



PRURITUS.

(INFLAMMATION AND ITCHING OF THE VULVA.)

SYMPTOMS.

Ulcers (small) may form.

Parts covered with pus.

Parts dry, red, hot and swollen.

Intolerable itching, with a burning, smarting disagreeable feeling.

Excessive sexual desire may be produced.

Desire to stretch and rub the parts.

The patient is sorely tormented by the itching.

Cannot sleep at night or rest by day and cannot go into society.

CAUSES.

Leucorrhœa.

Lack of cleanliness.

Constipation.

Luxurious habits.

Reflex influence of other troubles.

Friction of clothing.

Scrofula (in children).

Excessive coition.

PROLAPSUS.

(FALLING OF THE WOMB.)

SYMPTOMS.

Low position of the uterus.

Pain or weakness in the back.

Headache.

Dragging, bearing down sensations, the feeling intensified when standing or walking.

A whitish discharge.

Straining and difficulty at stool.

Urination may be difficult.

Feeling of goneness at the pit of the stomach.

Low spirits. Sadness.

Weakness of knees and exhaustion.

Lameness in lower extremities.

CAUSES.

Relaxation of muscles and other displacements.

The weight of clothing on the hips.

Tight lacing. Improper habits.

Wrong food.

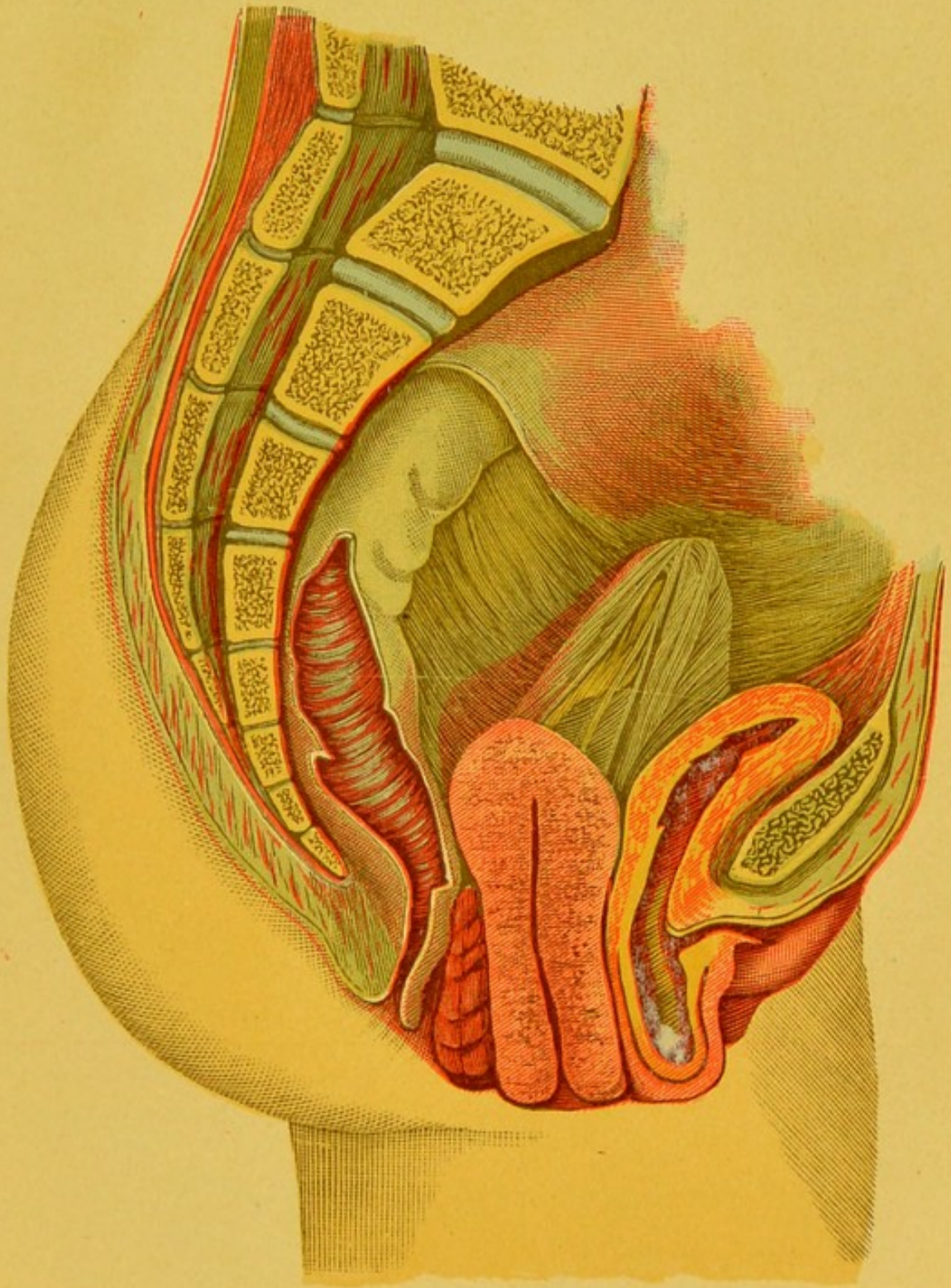
Constipation. Straining at stool.

Impure air. Idleness. Debility.

Lifting heavy weights.

Excessive copulation.

PLATE VI.



PROLAPSUS.

COPYRIGHTED BY
H. & H. E. LAW.

1891.



INFLAMMATION OF THE OVARIES.

SYMPTOMS.

- Pain and tenderness over the ovaries and the groin.
 - Derangement of menstrual functions.
 - Patient is often unable to walk, owing to severe pain and weight in pelvic region.
 - Tendency to hysteria.
-

CAUSES.

- Inflammation, dependent on the inflammation of surrounding tissue.
- Displacement of the Uterus.
- Gonorrhœa.
- Non-development of ovaries.

PERI-UTERINE INFLAMMATION.

(INFLAMMATION OF TISSUES SURROUNDING THE WOMB.)

SYMPTOMS.

Chills, followed by high fever.
Pain and tenderness in lower part of abdomen.
Sometimes nausea and vomiting.
Perhaps some menstrual derangement.
Sometimes abscesses form and discharge into rectum.
Peritonitis.

CAUSES.

Confinement. Inflammation of ovaries.
Imprudence during menstruation.
Injuries from instruments. Abortion. Coition.

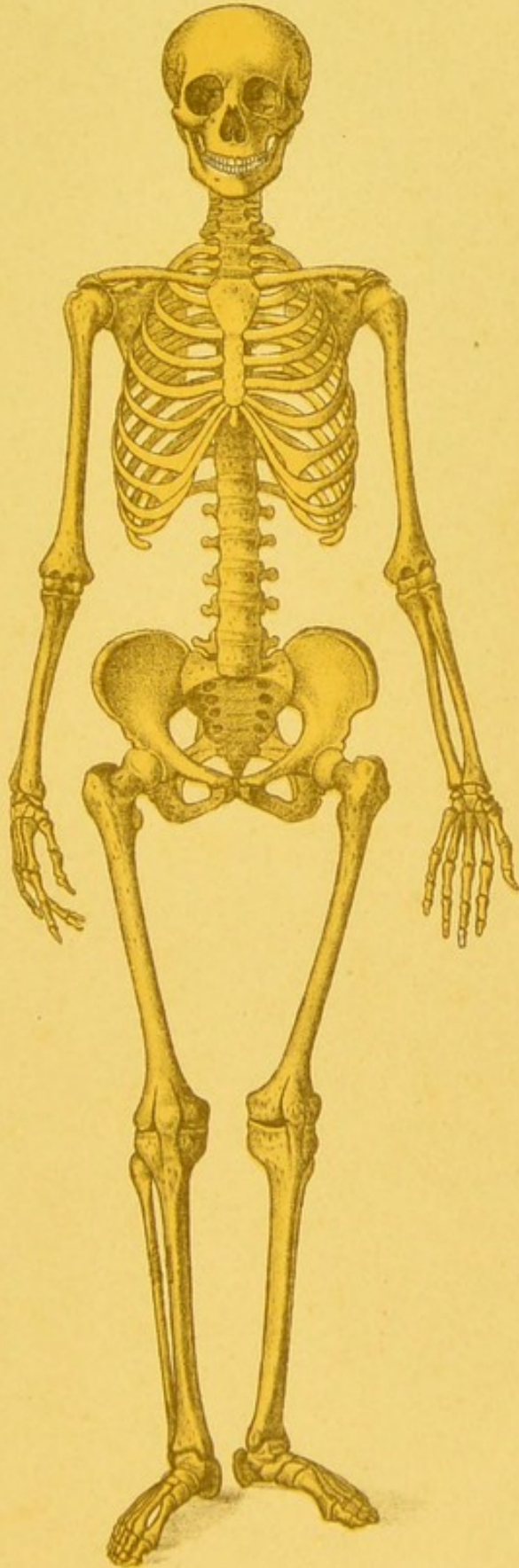
UTERINE POLYPI.

SYMPTOMS.

Leucorrhœa. Pain in the back and loins.
Profuse and excessive flow of blood at period.
Frequently flow between periods.
Painful menstruation.
Womb may be displaced and abdomen increased in size.

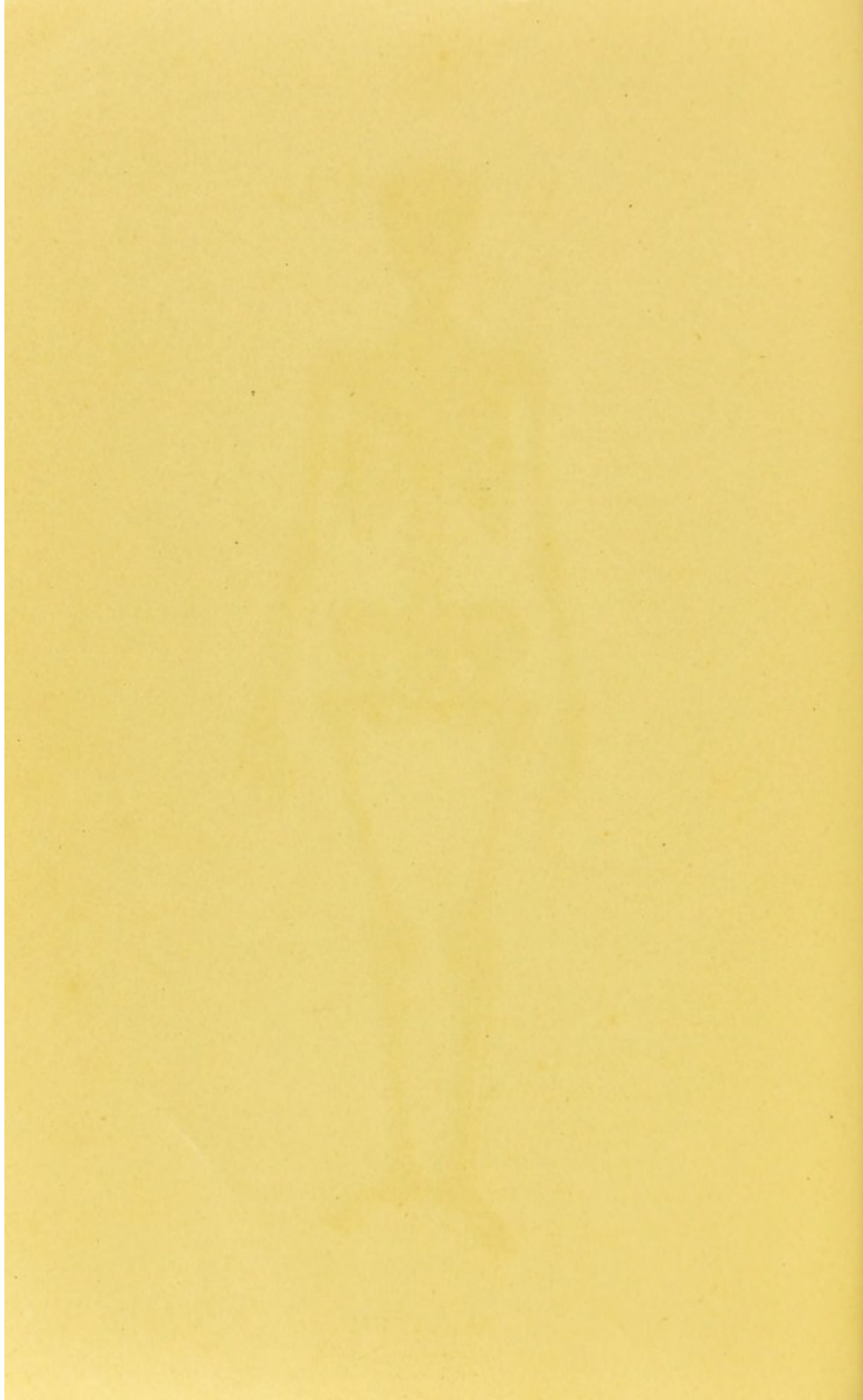
CAUSES.

Chronic inflammation. Uterine congestion.
Obstruction to menstrual flow.
No positive cause known.



SKELETON.

COPYRIGHTED BY
H. & H. E. LAW,
1891.



ULCERATION.

SYMPTOMS.

Nervousness.

Neuralgia in various parts of the body.

Leucorrhœa.

Inflammation of the surrounding tissues.

Aching pains in pelvis.

Falling of the womb.

Hysteria.

CAUSES.

Childbirth.

Operations.

PREGNANCY.

SYMPTOMS.

Morning sickness.

Cessation of the menses.

Quickening.

Flatting out of navel.

Enlargement of the breasts and abdomen.

Darkening of tissues around nipples.

ADHESIONS.

SYMPTOMS.

Same as displacements, but aggravated to a greater extent,
with discharges

CAUSES.

Displacements and inflammation.

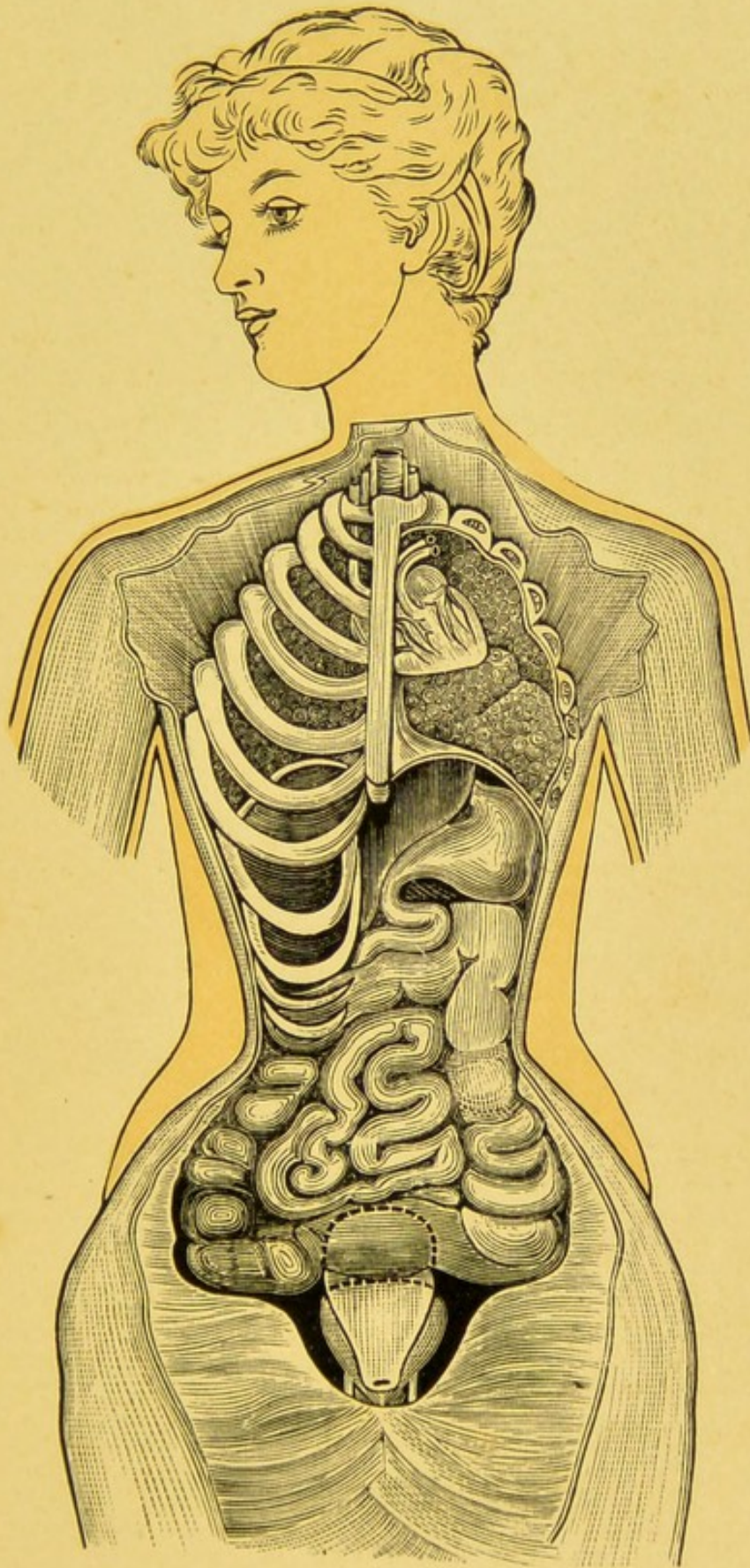
CONTRACTION.

SYMPTOMS.

Hysteria.
Displacement.
Labor-like pains or uterine colic.
Absence of menses.
Bearing down sensations.

CAUSES.

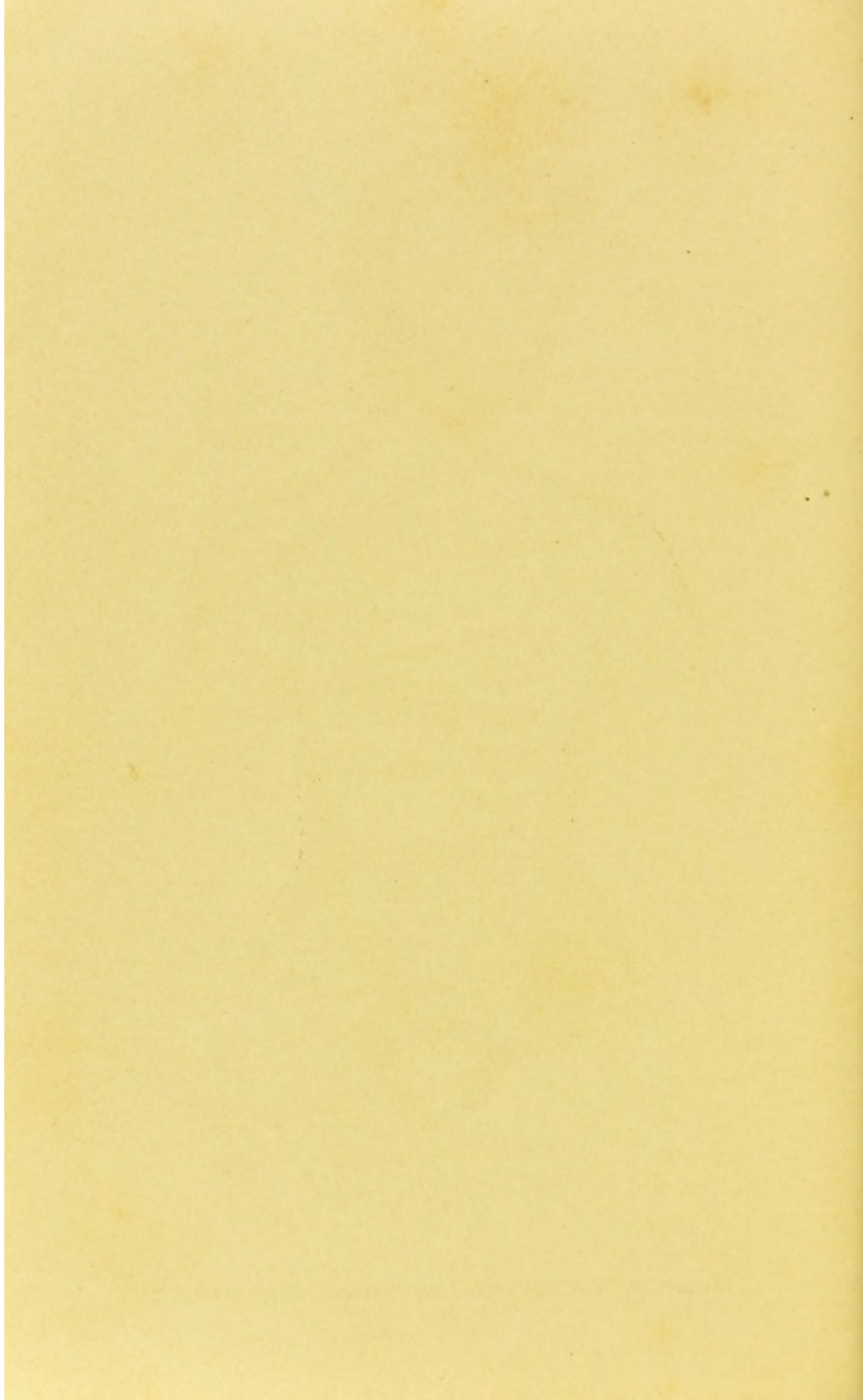
Displacements.
Cauterization.
Excessive sexual indulgence.
Nervousness.



DISPLACEMENT OF INTERNAL ORGANS.

COPYRIGHTED BY
H. & H. E. LAW.

1891.



H Y S T E R I A .

S Y M P T O M S .

- They are many and very variable.
- Hallucinations. Sudden loss of voice (sometimes).
- Severe pain in various parts of the body.
- Inability to control feeling or action.
- Excessive tears or hilarity.
- Convulsive movements accompanied by screams.
- Headache. Cramps. Numbness of limbs.
- Sensation of choking, with feeling of weight on chest.
- Breathing hurried and irregular.
- Palpitation of the heart. Flushing and pallor.
- Nausea and vomiting.
- The arms are thrown aimlessly about.
- The knees are drawn violently up to the abdomen and then extended.

C A U S E S .

- A morbid condition of the uterine nerves.
- Diseased condition of the womb and ovaries in married women.
- Emotional excitement. Fear. Anger.
- Disappointment of the affections.
- Religious fervor.
- Non-gratification of sexual and maternal feelings.
- Imitating a hysterical person.
- Improper food.
- Over study.

OVARIAN TUMORS.

SYMPTOMS.

Few symptoms at first.
Increased size of abdomen and suppression of menses.
Ordinary symptoms of pregnancy.
Derangement of bowels and bladder may occur.
Headache. Debility. General derangements.

CAUSES.

Are little understood.
A gathering of fluid and other matter from functional derangements.
Neuralgia. Sciatica.

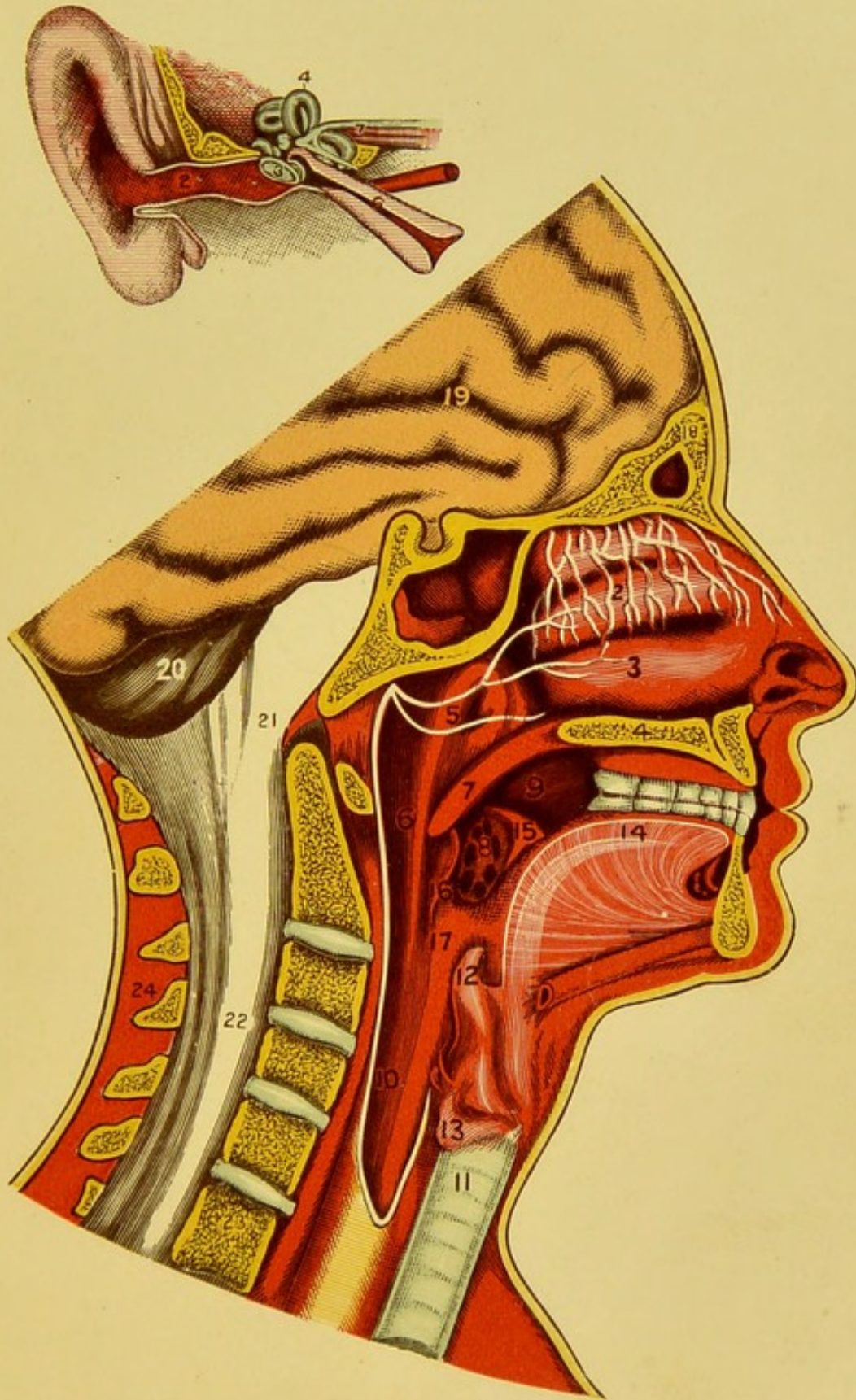
FIBROID TUMORS.

SYMPTOMS.

Watery discharge from the uterus.
Pain throughout the pelvis.
Irritability in rectum and bladder.
Profuse or painful menstruation.
Flow between periods. Congestion.
Pain in the abdomen, on touch.
Sometimes increases the size of the abdomen.

CAUSES.

Nothing is known respecting the cause.
The African race is most liable.
Occurs between the age of thirty to forty-five years.
Continued disorders of menstruation. Sterility.

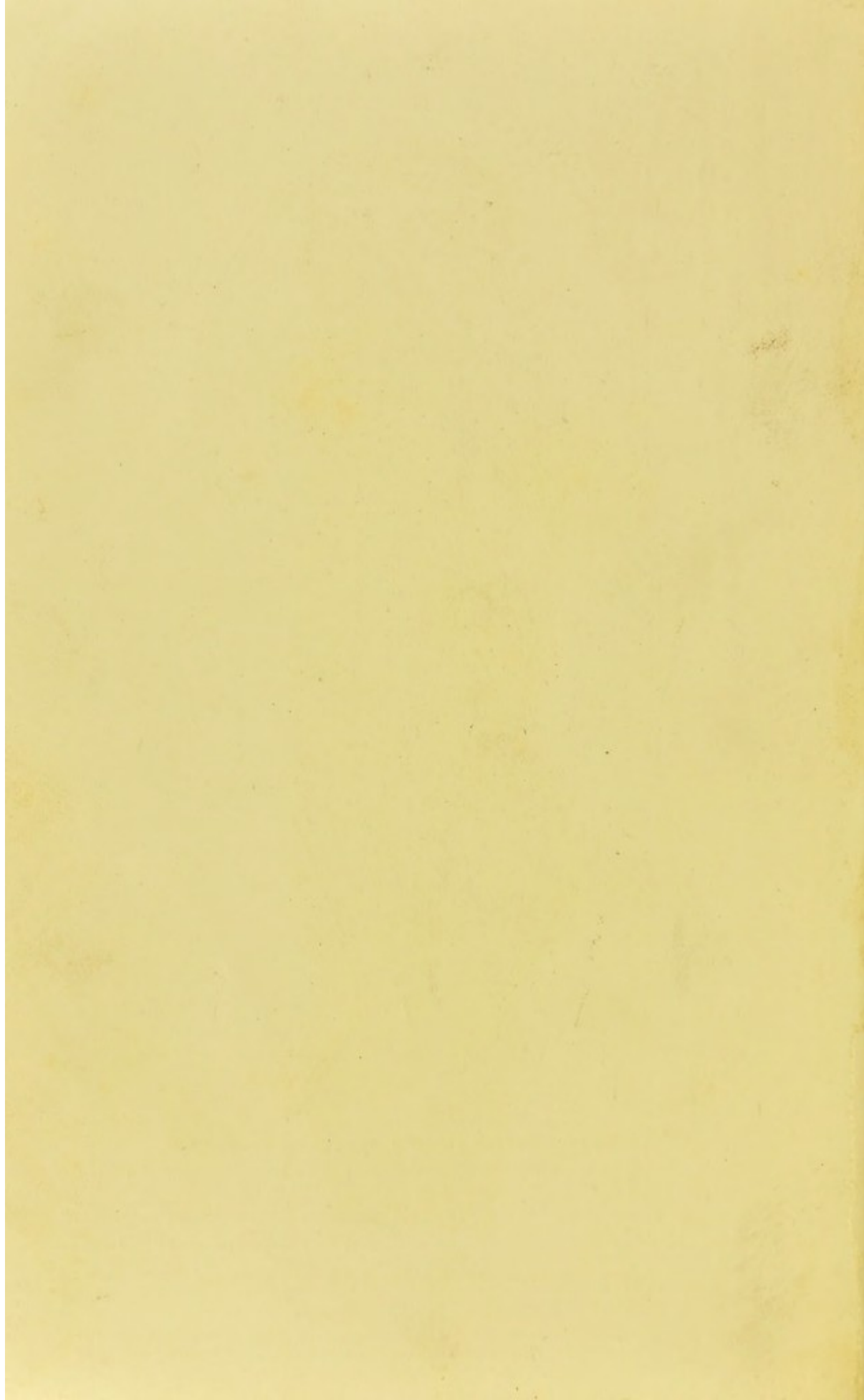


SECTIONAL VIEW OF MOUTH, NOSE, THROAT, ETC.

1-2-3—The outer wall of the Nasal Cavity which shows position of the three turbinated bones. Also the superior meatuses and the distribution of the Olfactory nerve or nerves of the nose. 4—The hard palate. 5—Opening of the Eustachian tube which leads to the inner ear. 6—Pharynx. 7—The soft or hanging palate or Uvula. 8—Tonsil. 9—Lateral portion of mouth. 10—Oesophagus. 11—Trachea or Wind-pipe. 12—Epiglottis. 13—Larynx. 14—Tongue. 15—Anterior Pillar of the Fauces. 16—Posterior Pillar of the Fauces. 17—Fauces. 18—The Frontal Bone. 19—Cerebrum or Convulsions of the Brain. 20—Cerebellum or base of the brain. 21—Medulla Oblongata. 22—Spinal Cord. 23—Body of Fifth Cervical Vertebra. 24—Spinal Process of Vertebra.

SECTIONAL VIEW OF EAR.

1—External Ear. 2—Auditory Canal. 3—Tympanum or Ear Drum. 4—Semi-circular Canals. 5—Internal Ear. 6—Eustachian Tube leading to Pharynx. 7—Auditory nerves or nerves of hearing.



CHANGE OF LIFE.

SYMPTOMS.

Are very variable.

Flow becomes intermittent; varies from one to six months between periods.

Loss of hearing, taste or smell.

Spitting of blood.

Irritating cough.

Symptoms of rapid decline.

Uterine catarrh. Inflammation.

Displacements. Tumors.

Leucorrhœa. Polypi.

Ovarian troubles.

Abscesses. Paralysis. Cancers.

Rheumatism. Neuralgia.

General run-down feeling.

Loss of strength.

CAUSES.

The natural succession of the epoch—viz, "The change of life."

HEMORRHOIDS OR PILES.




SYMPTOMS.

Blueish tumors in and about the external orifice of the rectum, sometimes internal, sometimes external.

Pain in the rectum.

Bleeding from rectum, caused by bursting of veins.

Pain when walking or sitting.



CAUSES.

If external, improper circulation.

Weight of clothing on the hips.

Sedentary habits.

Pregnancy.

Ovarian tumors.

Diseased growth in abdomen.

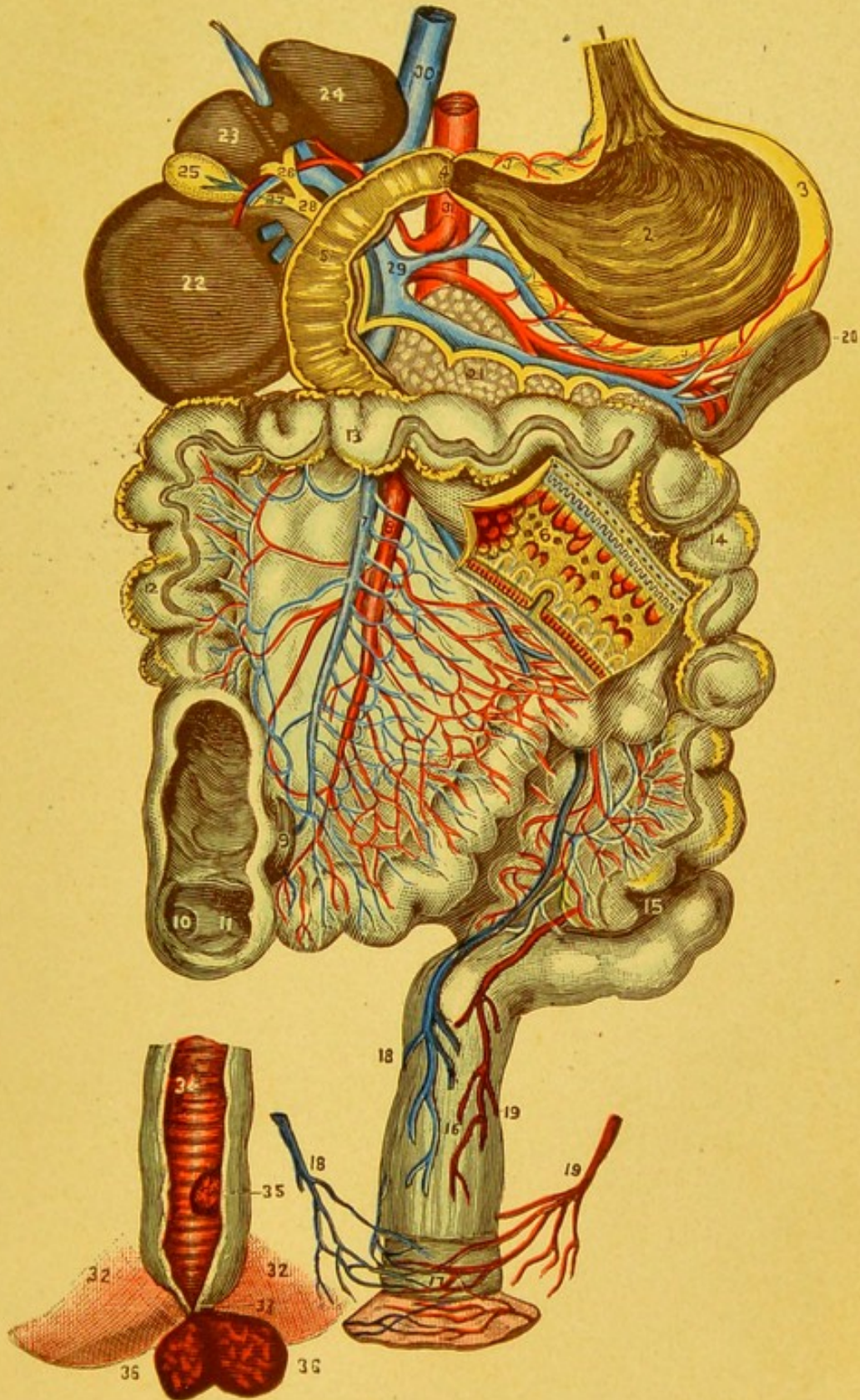
Local congestions of rectum, bladder and uterine organs.

Constipation.

Prolapsus of rectum, caused by dysentery or diarrhoea.

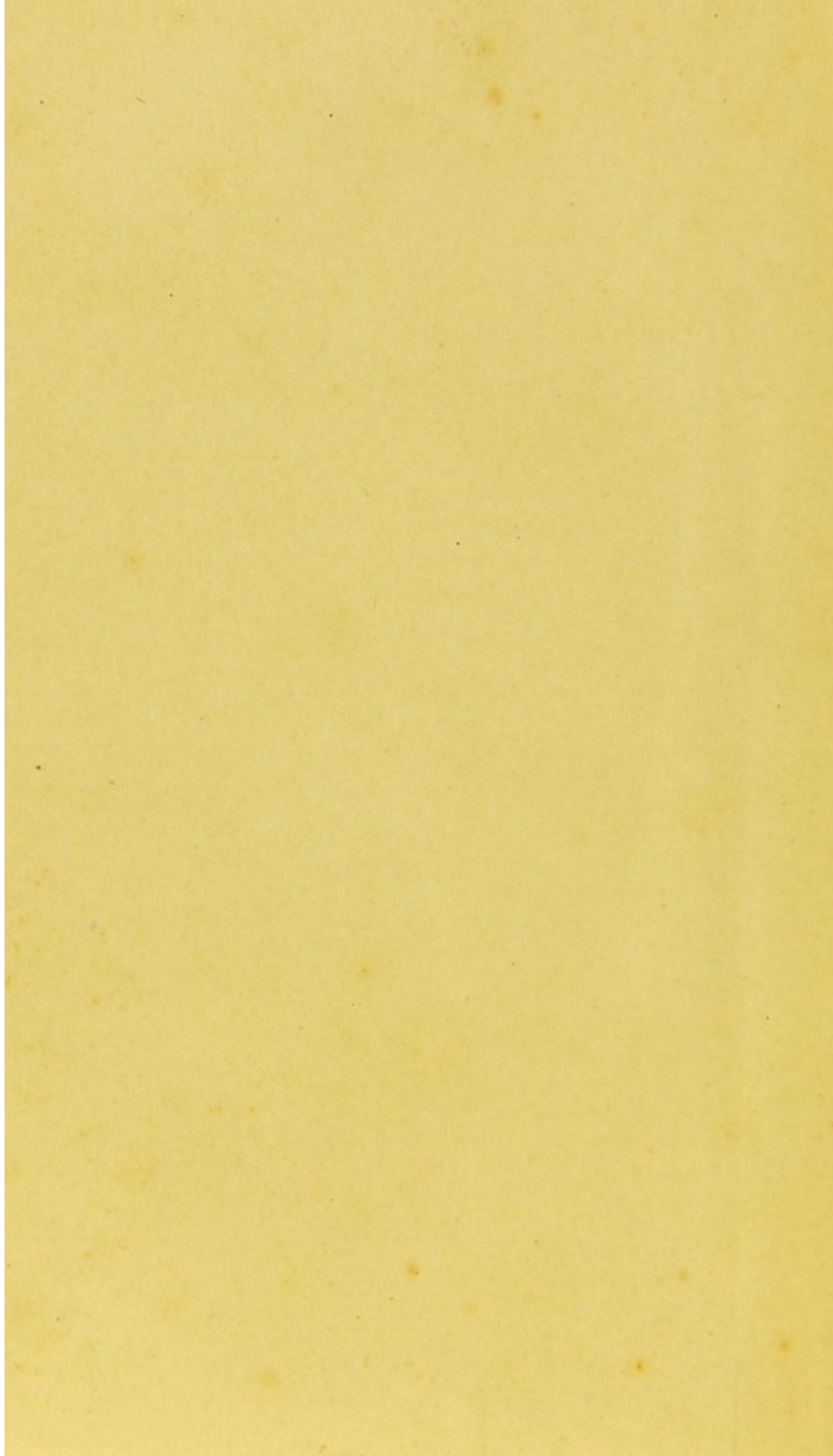
Liver troubles.

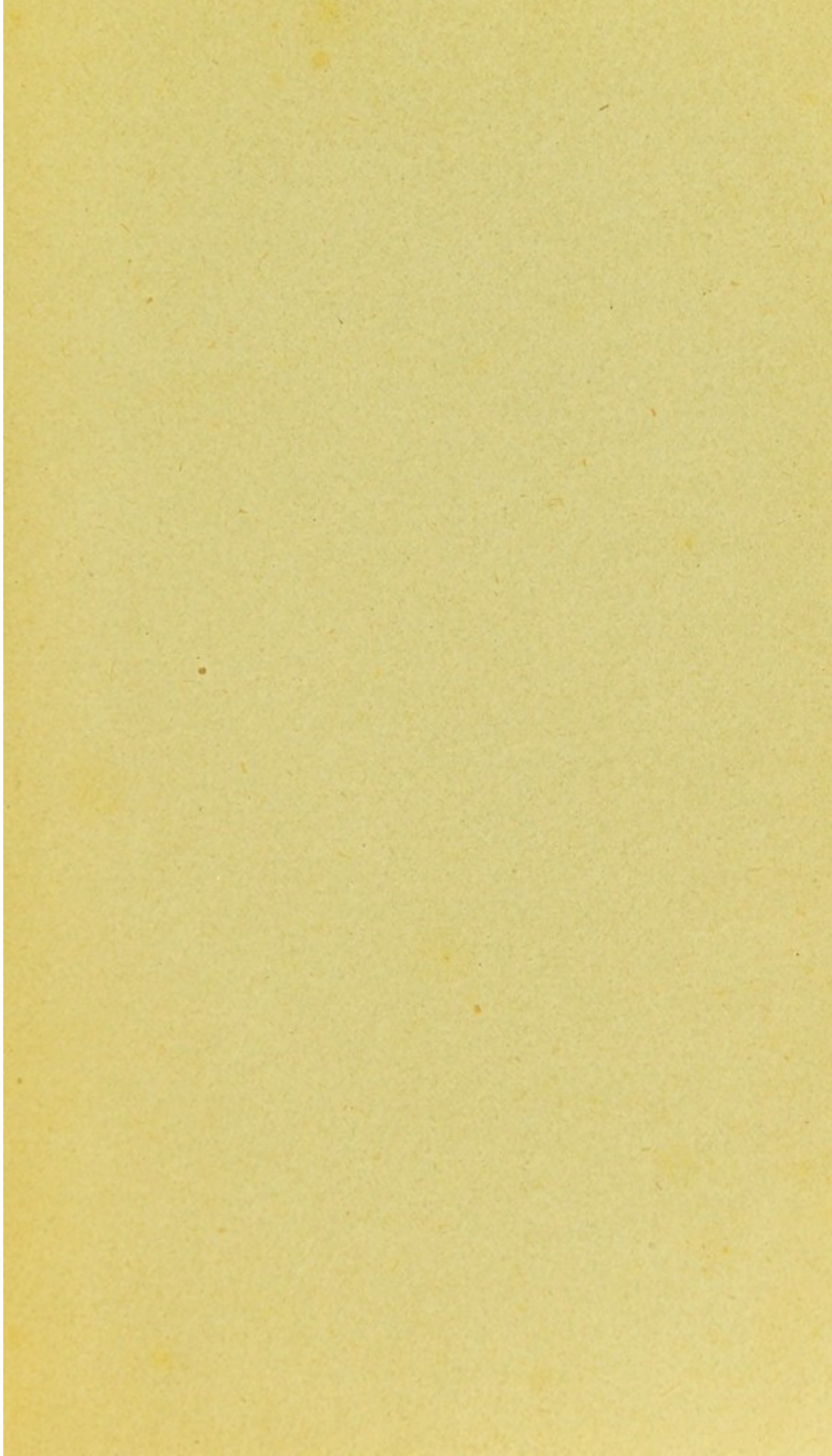
Varicose veins.

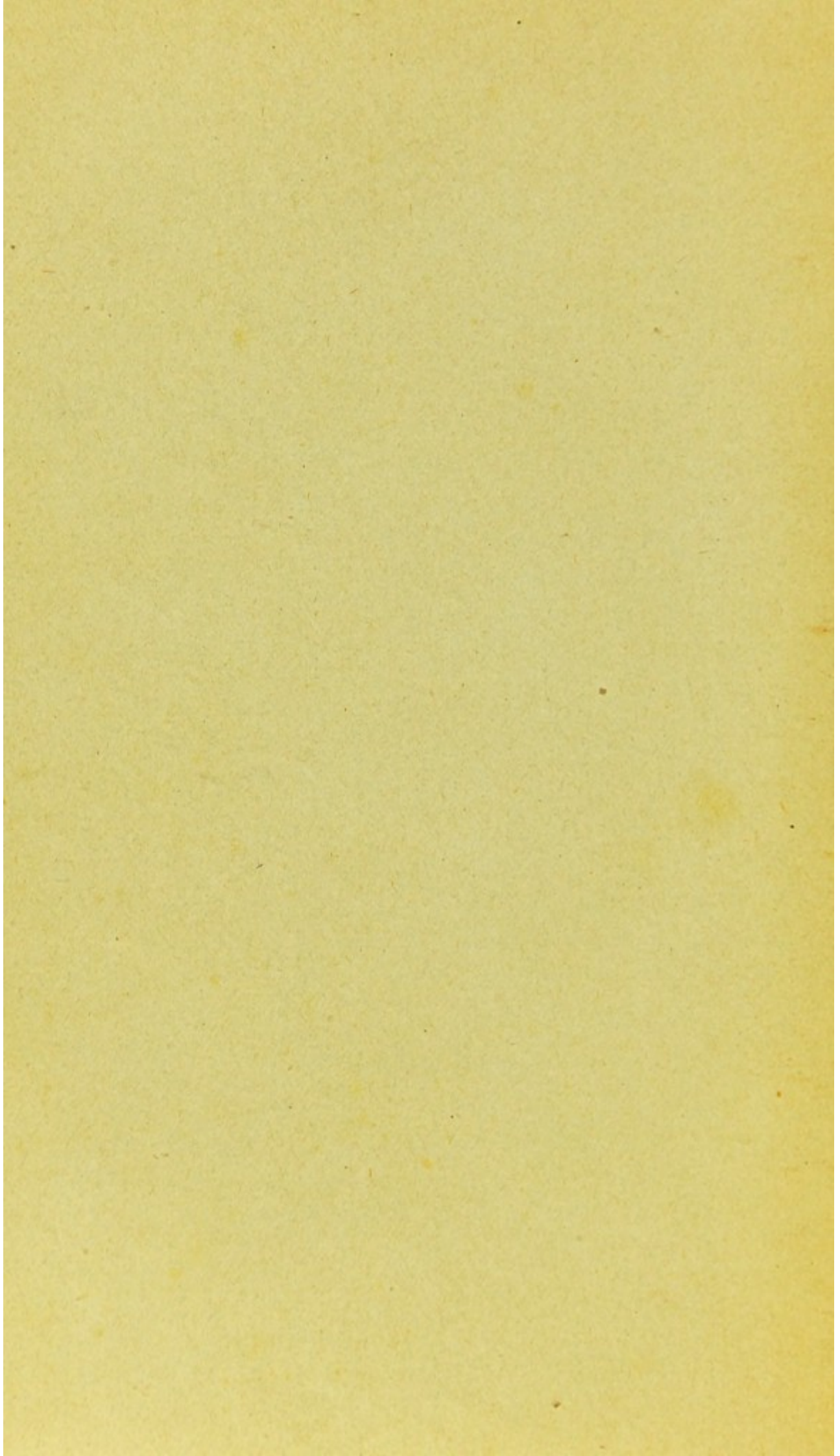


SECTIONAL VIEW, SHOWING STOMACH, LIVER, SMALL INTESTINES, RECTUM, ETC.

1—Oesophagus. 2—Stomach. 3-3-3—Walls of Stomach. 4—Pylorus. 5—Small intestine or duodenum. 6—Inside of small intestine or jejunum. 7—Superior mesenteric vein. 8—Superior mesenteric artery. 9—Vermiform appendix. 10—Opening of Vermiform appendix. 11—Ileo caecal valve or opening of small intestine into large. 12—Ascending portion of colon or large intestine. 13—Transverse section of colon or large intestine. 14—Descending portion of large intestine or colon. 15—Sigmoid flexure. 16—Rectum. 17—Sphincture ani. 18-18—Hemorrhoidal veins. 19-19—Hemorrhoidal arteries. 20—Spleen. 21—Panacrea. 22—Right lobe of liver. 23—Lobus curvatus. 24—Left lobe of liver. 25—Gall bladder. 26—Hepatic duct. 27—Cystic duct. 28—Common duct. 29—Vena Portæ or portal vein. 30—Inferior Vena cava. 31—Abdominal aorta. 32-32—Buttocks. 33—Anus. 34—Rectum. 35—Internal hemorrhoid. 36-36—External hemorrhoids.







CAUTION.

It has come to our notice, that some unscrupulous persons have refilled boxes out of which remedy has been used, with capsules containing various substances, resembling "VIAVI" in color, and more or less injurious, and in some instances dangerous.

You are cautioned under no circumstance to purchase any remedy purporting to be "VIAVI" from any but *authorized representatives*, so known to you; and *in no case* accept a box *without the seal* or *where the seal has been broken*.

—\$500.—REWARD.—

We will pay \$500 for the conviction of any person or persons substituting remedy in our boxes, or the selling of substituted remedy, or counterfeiting of our trade marks, or for any act punishable under the United States statute.

THE "VIAVI" Co.,
Home Office and Laboratory,
2304-6-8 Van Ness Ave.,
San Francisco, Cal., U. S. A.

628
/

