

**Pharmacopoeia in use at the male and out-patient department of the  
London Lock Hospital.**

**Contributors**

Lock Hospital (London, England)

**Publication/Creation**

London : printed by Adlard, 1887.

**Persistent URL**

<https://wellcomecollection.org/works/qc4vjb8s>

**License and attribution**

This work has been identified as being free of known restrictions under copyright law, including all related and neighbouring rights and is being made available under the Creative Commons, Public Domain Mark.

You can copy, modify, distribute and perform the work, even for commercial purposes, without asking permission.



Wellcome Collection  
183 Euston Road  
London NW1 2BE UK  
T +44 (0)20 7611 8722  
E [library@wellcomecollection.org](mailto:library@wellcomecollection.org)  
<https://wellcomecollection.org>

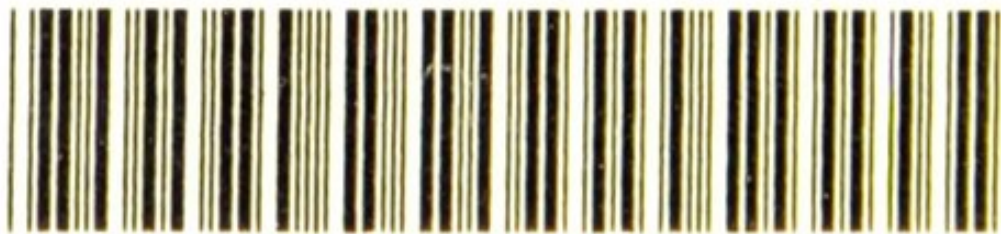
PHARMACOPEIA  
OF THE  
LONDON LOCK HOSPITAL.

M15727

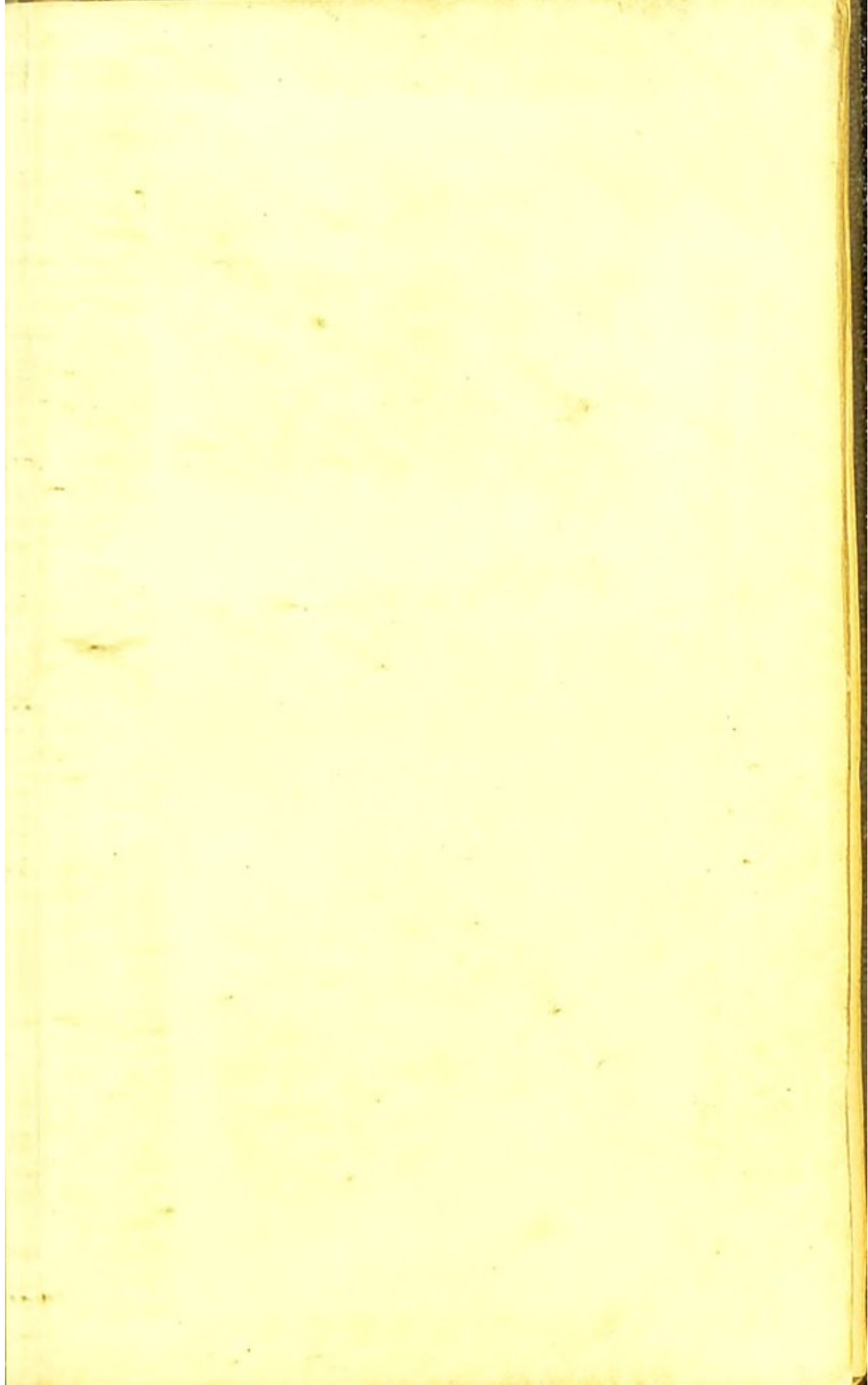
4

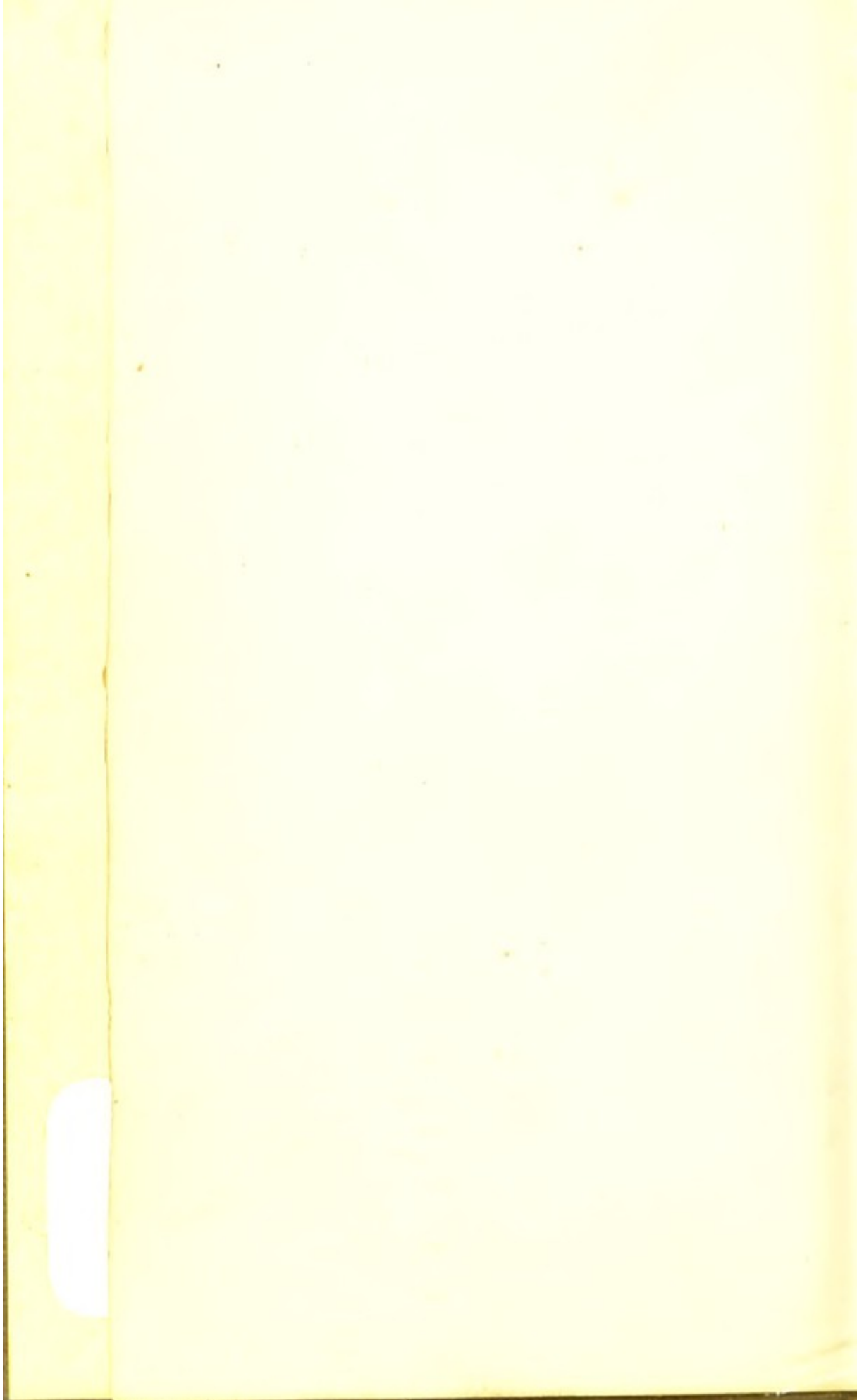


Arthur Sullivan  
2 Frederick Place  
Old Town  
N.Y.



22500288088





43134.

# PHARMACOPŒIA

IN USE AT THE

Male and Out-Patient Department

OF THE

LONDON LOCK HOSPITAL.

---

LONDON :

PRINTED BY ADLARD AND SON,

BARTHOLOMEW CLOSE.

—  
1887.

24 880 237

12864

WELLCOME INSTITUTE LIBRARY	
Coll.	WelMOmec
Coll.	
No.	QV 740
	. BES
	1887
	L 81 p

M 15727



# MEDICAL OFFICERS.



CONSULTING PHYSICIAN.

T. KING CHAMBERS, Esq., M.D., F.R.C.P.

PHYSICIAN.

SIR EDWARD HENRY SIEVEKING, M.D.,  
F.R.C.P.

CONSULTING SURGEONS.

SAMUEL LANE, Esq., F.R.C.S.

JAMES ROBERT LANE, Esq., F.R.C.S.

SURGEONS.

WALTER J. COULSON, Esq., F.R.C.S.

BUXTON SHILLITOE, Esq., F.R.C.S.

BERKELEY HILL, Esq., F.R.C.S.

SURGEONS TO THE OUT-PATIENTS.

ALFRED COOPER, Esq., F.R.C.S.

EDWARD MILNER, Esq., M.R.C.S.

J. ASTLEY BLOXAM, Esq., F.R.C.S.

HONORARY CHLOROFORMIST.

G. G. BIRD, Esq., M.R.C.S.





*Substances employed in the Hospital  
preparations, but not contained in  
the British Pharmacopœia.*

---

HYDRARGYRUM BICYANIDUM.

HYDRARGYRUM IODIDUM VIRIDE.

LIQUOR OPII SEDATIVUS.

SAL HARTINI.

SODIUM IODIDUM.





# PHARMACOPŒIA.

## BALNEA.

### THE CONTINUOUS HOT BATH.

℞ A constant flow of water at 98 —  
108° F. maintained by a "Geyser"  
apparatus.

### MERCURY VAPOUR BATH.

℞ Hydrargyri Subchloridi ... ʒss.

Volatilise together with half a pint  
of water for twenty minutes on  
Lee's lamp.

### ALKALINE BATH.

℞ Sodæ Carbonatis ... ʒviiij,  
Aquæ Calidæ ... gals. xxx.  
Solve.

*Bal. Pot. Sulphuratis*  
*℞. Pot. Sulphuratis* ʒvi to x  
*Hot-water* galls xxx  
*Solve*

## CAUSTICÆ.

## ACIDUM CARBOLICUM LIQUEFACTUM.

℞ Acidi Carbolici ... .. ℥xviij,  
 Aquæ ... .. ℥ij.  
 Solve.

## PASTA RICORDI.

℞ Acidi Sulphurici Fortioris,  
 Carbonis ligni.  
 M. Fiat pasta.

## SOLUTIO POTASSÆ PERMANGANATIS.

℞ Potassii Permanganatis, gr. viij—xl,  
 Aquæ ... .. ℥j.  
 Solve.

## SOLUTIO HYDRARGYRI BICYANIDI.

℞ Hydrargyri Bicyanidi ... gr. xx,  
 Aquæ ... .. ℥j.  
 Solve.



## COLLUNARIA.

## COLL. POTASSII PERMANGANATIS.

℞ Liq. Pot. Permanganatis ... ℥vj,  
 Aquæ ... .. ʒj.

M.

## COLL. SODÆ CHLORINATÆ.

℞ Liquoris Sodæ Chlorinatæ ℥v,  
 Aquæ ... .. ʒj.

M.

## COLL. ZINCI-SULPHO-CARBOLATIS.

Collunarium Zinci Sulpho-  
 carbolatis ... .. gr. ij,  
 Aquæ ... .. ʒj.

M.

*Coll. Aluminis*

℞ Aluminis  $\frac{gr \times \lambda}{\dots}$   
 Aquæ ʒx.

*Solve**Collyrium**Collyr. ac Borici.*

℞. ac Borici

Aquam ad

ʒix.

ʒi

*? too strong**AKW.*



## DECOCTUM.

## ZITMANN'S DECOCTION.

## I.—THE STRONG DECOCTION.

℞ Radicis Sarsæ Contusæ ... ℥iv,  
 Aquæ ... .. ℔ xxiv.

Digest for 24 hours and add, tied up in  
 linen :

Sacchari albi }  
 Aluminis } ... .. āā ℥ij,  
 Calomelanos ... .. gr.lxxx,  
 Hydrarg. Bisulphitis Rubri gr. xx.

Then simmer this down to 8 pints, and at  
 the close add :

Pulveris Anisi }  
 Pulveris Fœniculi } āā gr. lxxx,  
 Foliorum Sennæ ... .. ℥j,  
 Radicis Glycyrrhizæ ... ℥iv.

Let it stand one hour, press, and strain.

*Dose.*—One quart warm every morning.

## II.—THE WEAK DECOCTION.

To the dregs from I add :

Radicis Sarsæ Contusæ ... ℥ij,  
 Aquæ ... .. ℔ xxiv.

Simmer down to 8 pints, and at the close  
 add :

Corticis Limonis  
 Seminum Cardamomi }  
 Corticis Cassiæ } ... āā ℥j.  
 Radicis Glycyrrhizæ }

Let it stand for one hour, strain.

Dose.—One quart cold in the afternoon.

Punlsis  
 Punls. R. Morrh. ℥ij  
 Rx. ℔. Morrh. ℔i℔  
 Saccharini ℥v  
 Ol. Carui ℥v  
 Liq. Corticis ad ℥v

Misce

Fungatio

## GARGARISMATA.

### GARGARISMA ALUMINIS.

℞ Aluminis ... .. gr. xv,  
Aquæ ... .. ℥j.  
Solve.

### GARGARISMA ACIDI TANNICI.

℞ Acidi Tannici ... .. gr. x,  
Aquæ ... .. ℥j.  
Solve.

### GARGARISMA HYDRARGYRI PERCHLORIDI.

℞ Hydrargyri Perchloridi ... gr. ss,  
Acidi Hydrochlorici diluti ℥ij,  
Glycerini ... .. ℥xv,  
Aquæ ... .. ad ℥j.  
M.

### GARGARISMA PLUMBI ET ALUMINIS.

X ℞ Plumbi Acetatis ... }  
Aluminis Trisulph. } ... āā ℥j,  
Aquæ ... / ... ℥vj.  
Solve, filtrate, et adde  
Aquæ Aurantii Florum ... ℥ij.



Garg. Astringens  
 Cup. Acetat gr. x.  
 Aceti ʒi  
 Solue cold et adde  
 Mel Purificat 1ʒ ʒi  
 Glycerin ʒi  
 Aq. Calcis ad ʒi

GARGARISMA POT. CHLOR.

℞ Pot. Chlor. ... gr. x,  
 Aquæ ... ad ʒj.

Solve.

1. Garg. ac. Chrom. gr. i.  
 Aq. ad ʒi

HAUSTUS.

HAUSTUS ALBUS.

℞ Magnesiæ Sulphatis ... ʒj,  
 Magnesiæ Carbonatis ... gr. x,  
 Aquæ Menth. Pip. ... ʒj.

M.

HAUSTUS MENTHÆ SULPHATIS CUM  
 MAGNESIÆ SULPHATE.

℞ Magnesiæ Sulphatis ... ʒj,  
 Ac. Sulphurici dil. ... ℥x,  
 Syrupi Rhœados ... ʒss,  
 Aq. Menthæ Viridis ... ad ʒj

M.

## HAUSTUS QUININÆ.

✕ ℞ Quininæ Sulphatis ... gr. ij,  
     Acidi Sulphurici dil. ... ℥ij,  
     Aquæ .. ... ad ʒj.  
 M.

## HAUSTUS OPII.

✕ ℞ Liquoris Opii Sedativi ... ℥xx,  
     Aquæ ... ... ad ʒj.  
 M.

## HAUSTUS POTASSII BROMIDI.

✕ ℞ Potassii Bromidi ... gr. xx,  
     Chloralis Hydratis ... gr. xx,  
     Aquæ ... ... ʒj.  
 M.



## INJECTIONES PRO VAGINÂ.

## INJECTIO ALUMINIS.

℞ Aluminis ... .. ʒj,  
     Aquæ ... .. ʒxx.

Solve.

℥ij Cupri q̄iii ad ʒj

## INJECTIO ASTRINGENS.

℞	Acidi Tannici	...	...	℥j,
	Aluminis	...	...	℥ij,
	Aquæ	...	...	℥xxx.
M.				

## INJECTIO BORACIS.

℞	Sodæ Biboratis	...	...	℥j,
	Aquæ	...	...	℥xxx.
Solve.				

## INJECTIO PLUMBI.

℞	Liq. Plumbi Subacetatis	...	...	℥j,
	Aquæ	...	...	℥xxx.
M.				

## INJECTIO I PLUMBI CUM BELLADONNÂ.

℞	Extracti Belladonnæ	...	gr. xx,
	Inject. Plumbi Vaginalis...		℥xxx.



## INJECTIO PLUMBI CUM OPIO.

℞ Liquoris Plumbi ... .. ℥j,  
 Liquoris Opii Sedativi ... ℥xx,  
 Aquæ ... .. ad ℥xx.

M.

## INJECTIO ZINCI CUM ALUMINE.

℞ Zinci Sulphatis ... .. gr. xv,  
 Aluminis ... .. gr. xlv,  
 Aquæ ... .. ℥xx.

M.

*Inj. Hyd Perchlor 1m 10700*

## INJECTIONES PRO URETHRÂ.

## INJECTIO ALUMINIS.

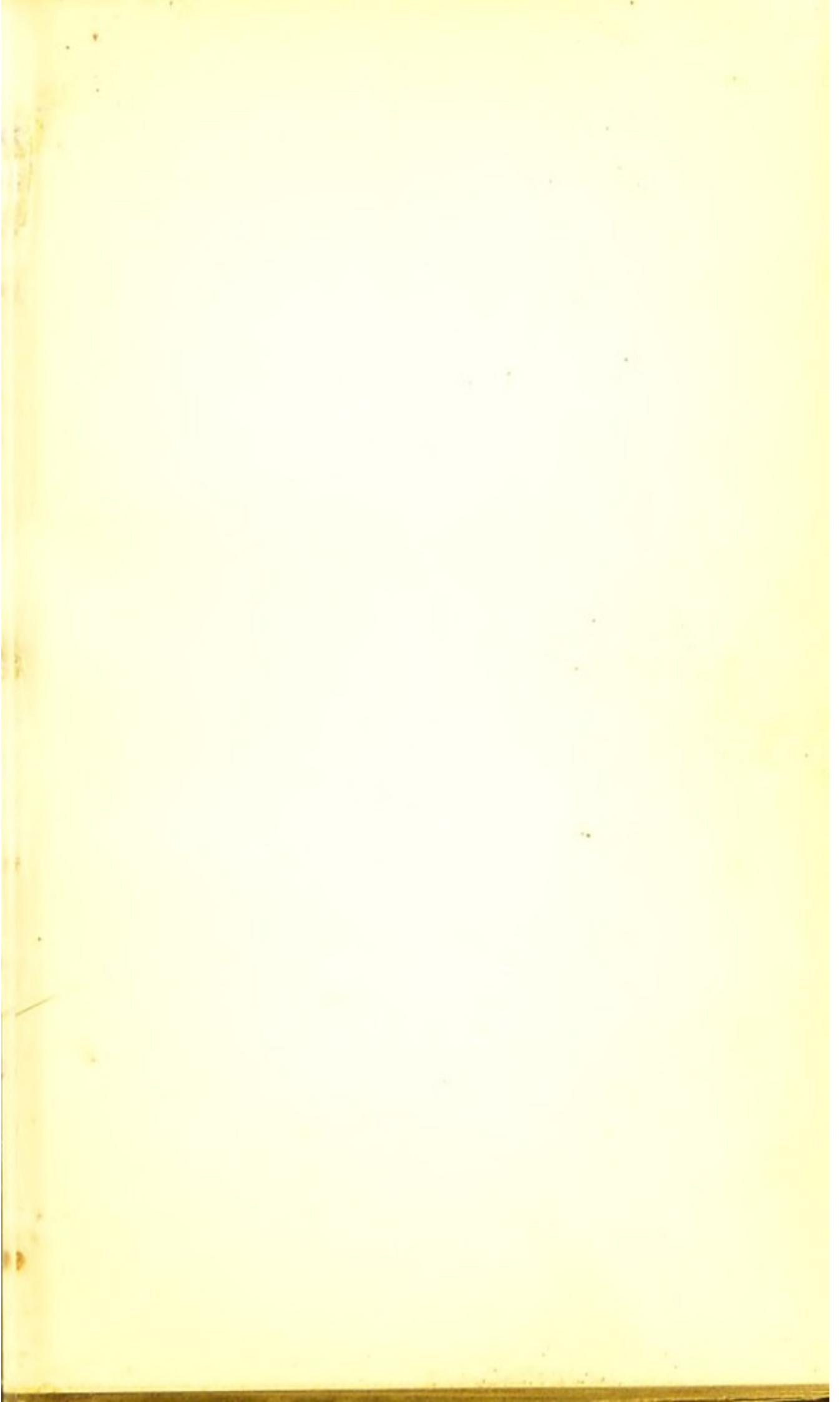
℞ Aluminis ... .. gr. j,  
 Aquæ ... .. ℥j.

Solve.

## INJECTIO CUPRI.

℞ Cupri Sulphatis ... .. gr. j,  
 Aquæ ... .. ℥j.

Solve.









Prof. Göttingen 5<sup>11</sup>/<sub>10</sub>

## INJECTIO PLUMBI.

℞ Liq. Plumbi Acetatis ... ʒj,  
 Aquæ ... .. ad ʒx.  
 M.

## INJECTIO PLUMBI CUM BELLADONNÂ.

℞ Injectionis Plumbi ... ʒj,  
 Extracti Belladonnæ ... gr. j.  
 M.

## INJECTIO ZINCI CUM BELLADONNÂ.

℞ Zinci Chloridi ... .. gr. ss,  
 Extracti Belladonnæ ... gr. j,  
 Aquæ ... .. ʒj.  
 M.

## INJECTIO ZINCI SULPHATIS.

℞ Zinci Sulphatis ... .. gr. j,  
 Aquæ ... .. ʒj.  
 Solve.

## INJECTIO ZINCI CHLORIDI.

℞ Zinci Chloridi ... .. gr. ss,  
 Aquæ ... .. ʒj.  
 Solve.

## INJECTIO ZINCI ACET. CUM CATECHU.

X	℞ Zinci Acetatis	...	...	gr. iv,
	Tinct. Opii	...	}	...
	Tinct. Catechu	...		
	Mucilag. Acaciæ	...	...	ʒj,
	Aquæ	...	...	ad ʒj.

M.

## INJECTIO ZINCI CUM PLUMBI CUM CATECHU.

X	℞ Zinci Acetatis	...	...	gr. iv,
	Plumbi Acetatis	...	...	gr. iv,
	Tinct. Catechu	...	...	ʒj,
	Aquæ	...	...	ad ʒiij

M.

## INJECTIO ZINCI SULPHO-CARBOLATIS.

—	℞ Zinci Sulpho-carbolatis	...	gr. ij,
	Aquæ	...	ʒj.

Solve.

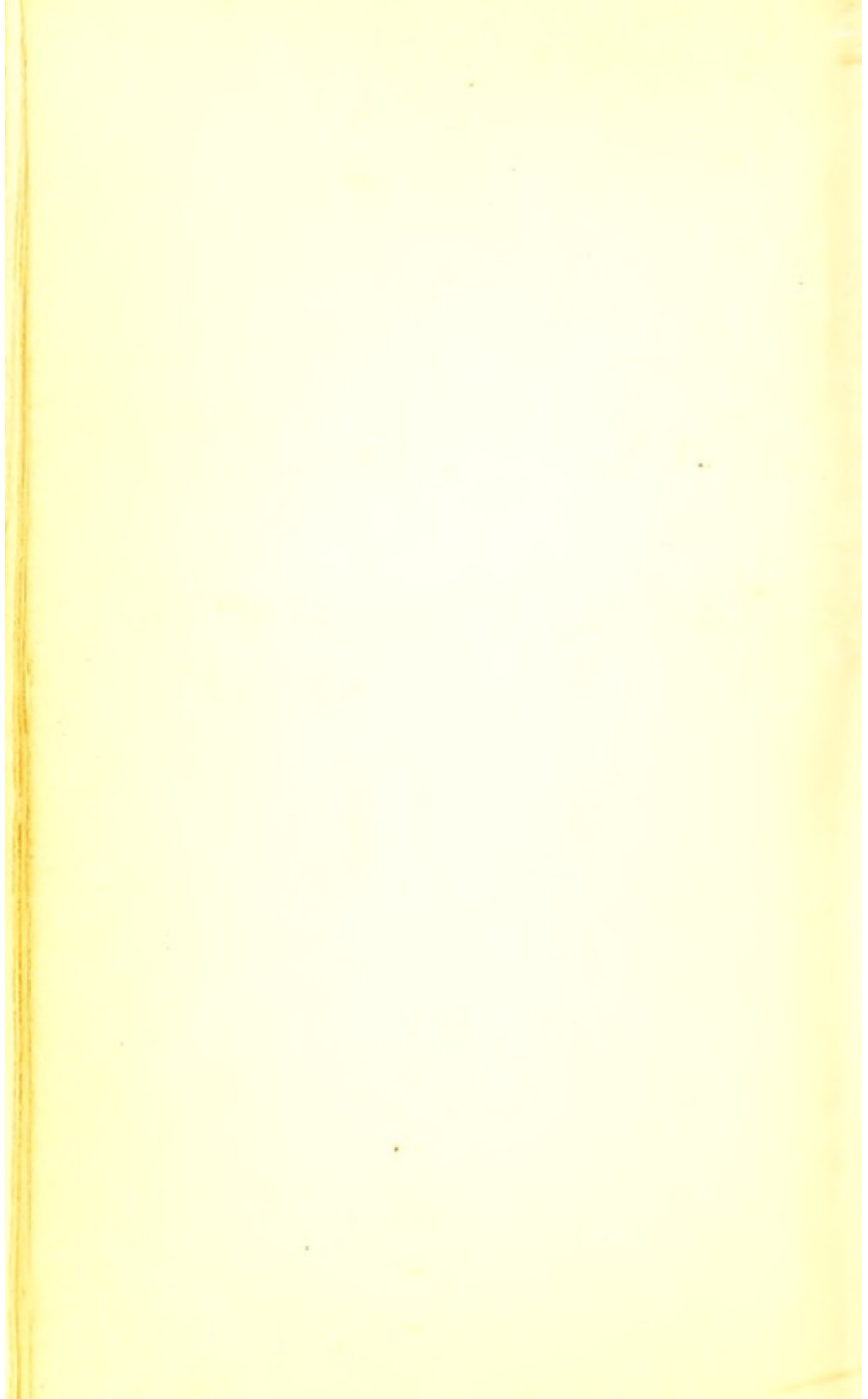
## INJECTIO ZINCI PERMANGANATIS.

/	℞ Zinci Permanganatis	...	gr. $\frac{1}{8}$ ,
	Aquæ	...	ʒj.

Solve.

Apr. V.





Zn Sulph

817

Fe Sulp

810

Cup "

810

Alum "

817

Arg

ad 31

---

Liqu Hyd Perchlor 91 1/2

ad 31

---

Lotio Ac Rosae

Ac Rosae gr. v. ad ʒi

Alumina XV

ad ʒi

---

R. Caultaridae ʒiij

Sp Ammon Aromat ʒi

Glyce

Aq Rosae ad ʒviii

---

Lot. Plum. Vapor Cortis

Liq Plum. Subacel ʒi

Sp Rect: ʒiij

Aq destil ad ʒi

## INJECTIO HYDRARGYRI HYPODERMICA.

℞ Hydrargyri Perchloridi ... gr. viij,  
 Aquæ ... .. ʒj.

Solve.

Inject ℥ xv—xx into the muscles of  
 the buttock or shoulder.

*†*



## LINIMENTUM.

LINIMENTUM BELLADONNÆ COMPO-  
SITUM.

℞ Extracti Belladonnæ }  
 Glycerini ... .. } part. æq.

M.





## LOTIONES.

## LOTIO ACIDI CARBOLICI.

℞ Acidi Carbolici ... .. ʒss,  
 Aquæ ... .. ʒxx.  
 Solve.

## LOTIO BORACIS.

℞ Sodæ Biboratis ... .. ʒj,  
 Aquæ Ferventis ... .. ʒxx.  
 Solve.

## LOTIO EVAPORANS.

℞ Spiritûs Methyлат. ... .. ʒv,  
 Aquæ ... .. ad ʒxx.  
 M.

## LOTIO FERRI TARTARATI.

℞ Ferri Tartarati ... .. ʒi gr. xx,  
 Liquoris Opii Sedativi ... .. ℥x,  
 Aquæ ... .. ʒj.  
 M.

## LOTIO PLUMBI.

℞ Liq. Plumbi Acetatis ... ℥ij,  
 Aquæ ... .. ℥xx.

M.

## LOTIO POTASSÆ PERMANGANATIS.

℞ Potassæ Permanganatis ... gr. viij,  
 Aquæ destillatæ ... .. ℥j.

Solve.

## LOTIO RUBRA.

℞ Zinci Sulphatis ... .. ℥j, ✓  
 Tinct. Lavandulæ Co. ... ℥iiss,  
 Aquæ ... .. ad ℥xx.

M.

## LOTIO SODÆ CHLORATÆ.

℞ Liq. Sodæ Chlorinatæ ... ℥x,  
 Sodii Chloridi ... .. ℥x,  
 Aquæ ... .. ℥xx.

M.

LOTIO SODÆ HYDROSULPHITIS.

℞ Sodæ Hyposulphitis ... ℥iij,  
 Glycerini ... .. ℥j,  
 Aquæ ... .. ad ℥xx.

M.

LOTIO PLUMBI CUM OPIO.

℞ Tinct. Opii ... .. ℥xx,  
 Lot. Plumbi ... .. ad ℥j.

M.

*dos Plumbi Fort.*  
*Liq Plumbi Subact. ℥j*  
*5℥℞℞℞℞℞℞℞℞℞*  
 MISTURÆ. *℥xx*

MISTURA ACIDI NITRO-HYDROCHLORICI.

℞ Acidi Nitro-Hydrochlorici ℥xv,  
 Tincturæ Aurantii ... ℥ss,  
 Spiritûs Chloroformi ... ℥x,  
 Aquæ ... .. ad ℥j.

M.

MISTURA ALBA.

℞ Magnesii Sulphatis ... ℥j,  
 Magnesii Carbonatis ... gr. x,  
 Aquæ Menthæ Pip. ... ℥j.

M.



## MISTURA ALKALINA AMARA.

℞ Ammonii Carbonatis	...	gr. iij,
Sodii Bicarbonatis	...	gr. x,
Infusi Gentianæ Co.	...	ʒj.

M.

## MISTURA ALKALINA APERIENS.

℞ Sodii Bicarbonatis	...	gr. xx,
Ammonii Carbonatis	...	gr. v,
Magnesii Carbonatis	...	gr. xxx,
Aquæ	... ..	ʒj.

M.

## MISTURA CINCHONÆ ACIDA.

℞ Acidi Nitro-Hydrochlorici			
diluti	... ..	℥xv,	✓
Decocti Cinchonæ...	...	ad ʒj.	

M.

## MISTURA COPAIBÆ.

℞ Balsami Copaibæ	}	...	℥xv,
Liquoris Potassæ			
Aquæ	... ..	...	ad ʒj.

M.



## MISTURA DONOVANI.

℞	Liquoris Donovanii	...	℥xv,
	Sodii Bicarbonatis	...	gr. x,
	Spiritûs Chloroformi	...	℥x,
	Aquæ	... ..	ad ʒj.

M.

## MISTURA FERRI.

℞	Liquoris Ferri Perchloridi	℥xv,
	Aquæ	... .. ad ʒj.

M.

## MISTURA FERRI AMARA.

℞	Liquoris Ferri Perchloridi	℥xx,
	Spiritûs Chloroformi	... ℥v,
	Infusi Quassiaë	... .. ad ʒj.

M.

7 7  
MISTURA FERRI CUM POTASSII IODIDO.

℞	Ferri Tartarati	... ..	gr. viij.
	Potassii Iodidi	... ..	gr. iv,
	Aquæ	... ..	ʒj.

M.

## MISTURA FERRI CUM QUASSIÂ.

* ℞	Liquoris Ferri Perchloridi	℥xv,
	Infusi Quassiaë	... .. ad ʒj.

M.

Mist Gent. Alk

Sod Bicarb gr XV

Dif Gentian Co ad 31

Mist Sod Dosed

Sod Sod grs V

Acumon Sod grs V

Liq Arsenicalis m 11

Aq Camph ad 31

Mist Quercyon Benzoe.

Acumon Benzoe gr XV

Sod Bicarb grs XV

Aq ad 31

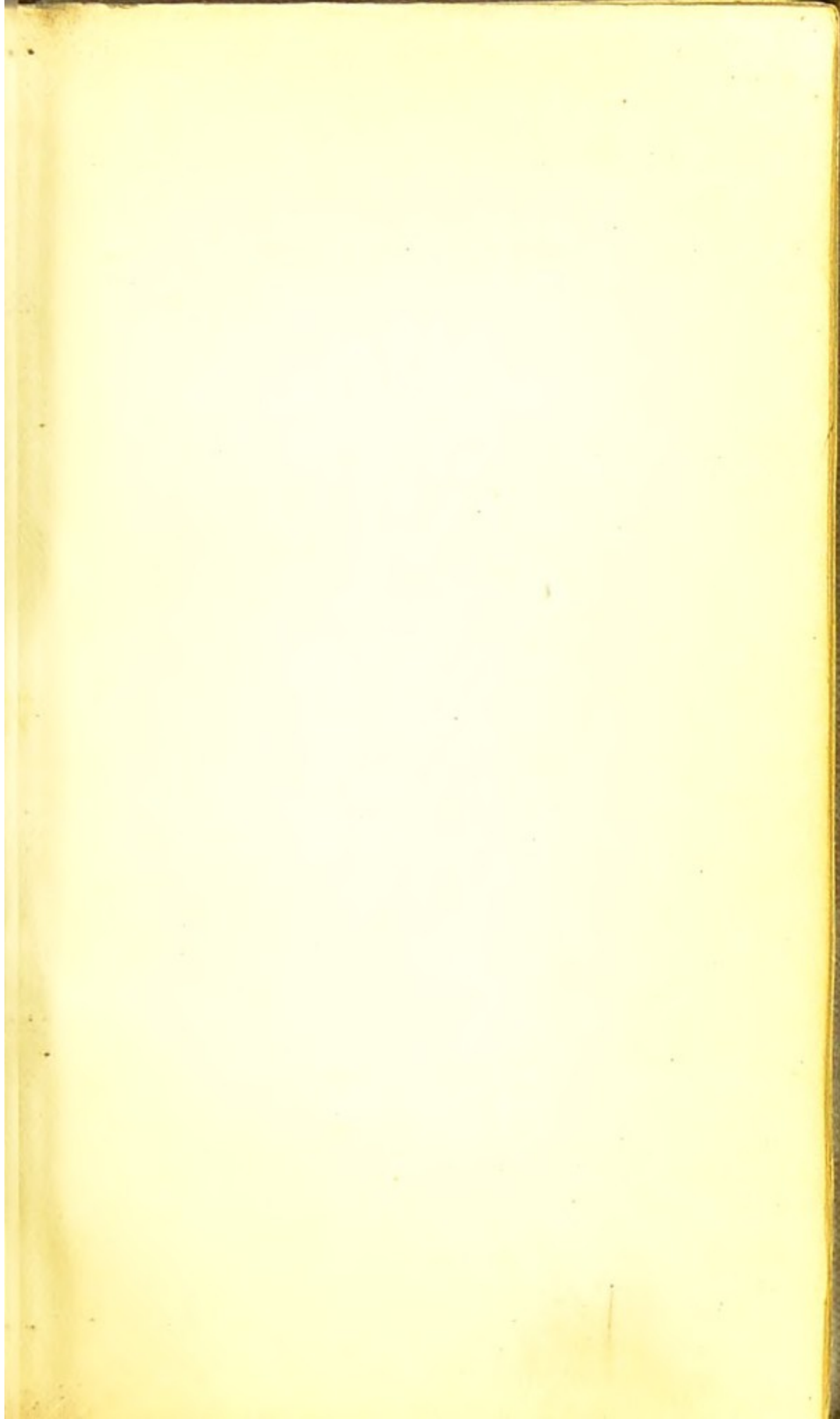
Mist Sod Benzoeat.

Sodii Benzoeas grs XV

Unit Hyd perchlor

Hyd perchlor 80/16

Inf Quassine ad 37





Mixt Sulfur Aperi.

Sulfur Sulph	gr	℥
Acid Sulph del	ʒij	℥ss
Mag Sulph	℥i	
Aq ad	℥i	

---

Mixt Ferr Sulph.

Ferr Sulph	ʒij	℥
Acid Sulph del	ʒij	℥
Aq ad	℥i	

---

## MISTURA FERRI LAXANS.

℞ Ferri Sulphatis	...	...	gr. j,
Magnesii Sulphatis	...	...	ʒj,
Acidi Sulphurici diluti	...	...	℥iv,
Aquæ	...	...	ad ʒj.

M.

## MISTURA GUMMI ACACIÆ.

℞ Potassii Nitratis	...	...	gr. viij, <span style="float: right;">γ</span>
Pulveris Gummi Acaciæ	...	...	gr. xx,
Sodii Bicarbonatis	...	...	gr. xx,
Aquæ Cinnamomi	...	...	ad ʒj.

M.

## MISTURA HYDRARGYRI BINIODIDI.

℞ Hydrargyri Perchloridi	...	...	gr. $\frac{1}{16}$ ,
Potassii Iodidi	...	...	gr. iij,
Infusi Quassiaë	...	...	ad ʒj. <span style="float: right;">—</span>

M.

## MIST. HYDRARGYRI CUM FERRO.

℞ Liq. Hydrarg. Perchlor.	...	...	ʒj,
Liq. Ferri Perchlor.	...	...	℥xv, <span style="float: right;">/</span>
Aquæ	...	...	ad ʒj.

M.

## MISTURA OLEI SANTALIS.

℞ Potassii Bicarbonatis ... gr. ~~xl~~, <sup>v</sup>  
 Olei Santalis Flavæ ... ~~ʒij~~, <sup>ʒij, ʒij</sup>  
*usual T 200* Pulveris Acaciæ ... ~~gr. lxxx~~, <sup>ʒi</sup>  
 Tincturæ Aurantii ... ~~ʒij~~, <sup>ʒij</sup>  
 Aquæ Cinnamomi ... ad ~~ʒij~~. <sup>ʒij</sup>  
 M. Dose ʒj—ʒij.

## MISTURA POTASSÆ BICARBONATIS.

℞ Potassii Bicarbonatis ... gr. x,  
 Potassii Nitratis ... gr. v,  
 Aquæ ... .. ʒj.  
 M.

## MISTURA POTASSII BROMIDI.

℞ Potassii Bromidi ... gr. x,  
 Aquæ Camphoræ ... ad ʒj.  
 Solve.

## MISTURA POTASSÆ CITRATIS.

℞ Potassii Citratis ... gr. xx,  
 Aquæ ... .. ad ʒj.  
 Solve. <sup>ʒ</sup>



## MISTURA POTASSII CHLORATIS.

℞ Potassii Chloratis... .. gr. x,  
 Aquæ ... .. ad ʒj.  
 Solve.

## MISTURA POTASSII CUM HYOSCYAMO.

℞ Liquoris Potassii ... .. ℥xv,  
 Tincturæ Hyoscyami ... .. ℥xv, ✓  
 Aquæ ... .. ad ʒj.  
 M.

MISTURA POTASSII CITRATIS CUM  
HYOSCYAMO.

℞ Potassii Citratis ... .. ℥xv,  
 Tincturæ Hyoscyami ... .. ℥xxx, ✓  
 Aquæ ... .. ad ʒj.  
 M.

## MISTURA POTASSII IODIDI.

℞ Potassii Iodidi ... .. gr. v,  
 Spiritûs Ammonii Aromati-  
 tici ... .. ℥xx, ✓  
 Aquæ ... .. ad ʒj.  
 M.

## MISTURA QUINIÆ.

℞ Quiniæ Sulphatis ... .. gr. ij,  
 Acidi Sulphurici diluti ... .. ℥ij,  
 Aquæ ... .. ad ʒj.  
 M.



## MISTURA QUINIÆ CUM FERRO.

℞ Quiniæ Sulphatis ... .. gr. ij, ✓  
 Misturæ Ferri ... .. ad ʒj.  
 M.

## MISTURA SALIN. APER.

℞ Magnesii Sulphatis ... .. ʒj,  
 Misturæ Sennæ Co. } ... .. ʒss. ✓  
 Aquæ ... .. }  
 M.



## OLEA.

## OLEUM CARBOLATUM.

℞ Acidi Carbolici ... .. ʒj, ✓  
 Oleæ Olivæ ... .. ad ʒx.  
 Solve.

## OLEUM EUCALYPTI COMPOSITUM.

℞ Olei Eucalypti } ... .. part. æq.  
 Olei Ricini ... }  
 M.

## LUND'S OIL.

℞	Olei Amygdali	...	...	℥iiss,
	Olei Ricini	...	...	℥iv,
	Acidi Carbolici	...	...	℥j.
M.				

---

 PILULÆ.

## PILULA FERRI SULPHATIS.

℞	Ferri Sulphatis Exsiccati	gr. v,	7
	Syrupi	℥j.	
M.			

## PILULA HYDRARGYRI ET GENTIANÆ.

℞	Pilulæ Hydrargyri	gr. j,	7
	Extracti Gentianæ	gr. ij.	
M.			

## PILULA HYDRARGYRI CUM OPIO.

℞	Pilulæ Hydrargyri	gr. ij,	o
	Pulveris Opii	gr. ¼.	/
M.			

PIL. HYDRARG. CUM OPIO FORTIOR.

℞ Pilulæ Hydrargyri ... gr. v,  
 Pulveris Opii ... gr.  $\frac{1}{2}$ ,  
 M.

PIL. HYDRARGYRI CUM COLOCYNTHIDE.

℞ Pilulæ Hydrargyri ... gr. ij,  
 Extracti Hyoseyami ... gr. ij,  
 Pilulæ Colocynthidis Co... gr. v.  
 M. Fiat pilulæ ij.

PIL. HYDRARG. CUM CRETÂ CUM FERRO

℞ Ferri Redacti ... gr. ij,  
 Hydrargyri cum Cretâ ... gr. ij,  
 Extracti Gentianæ ... gr. j.  
 M.

PIL. HYDRARG. CUM FERRO REDACT.

℞ Pil. Hydrarg. ... gr. j,  
 Ferri Redacti ... gr. ij,  
 Extracti Gentian. ... q. s.  
 M.

PIL. HYDRARGYRI IODIDI VIRIDIS.

℞ Hydrargyri Iodidi Viridis gr. j,  
 Extracti Opii ... gr.  $\frac{1}{2}$ ,  
 Extracti Hæmatoxyli ... gr. j,  
 Extracti Gentian. ... q. s.  
 M.



Pil Hyd Tannat

Hyd. Tannat 9.5

~~Pul Sol Hyosey~~ 9.5

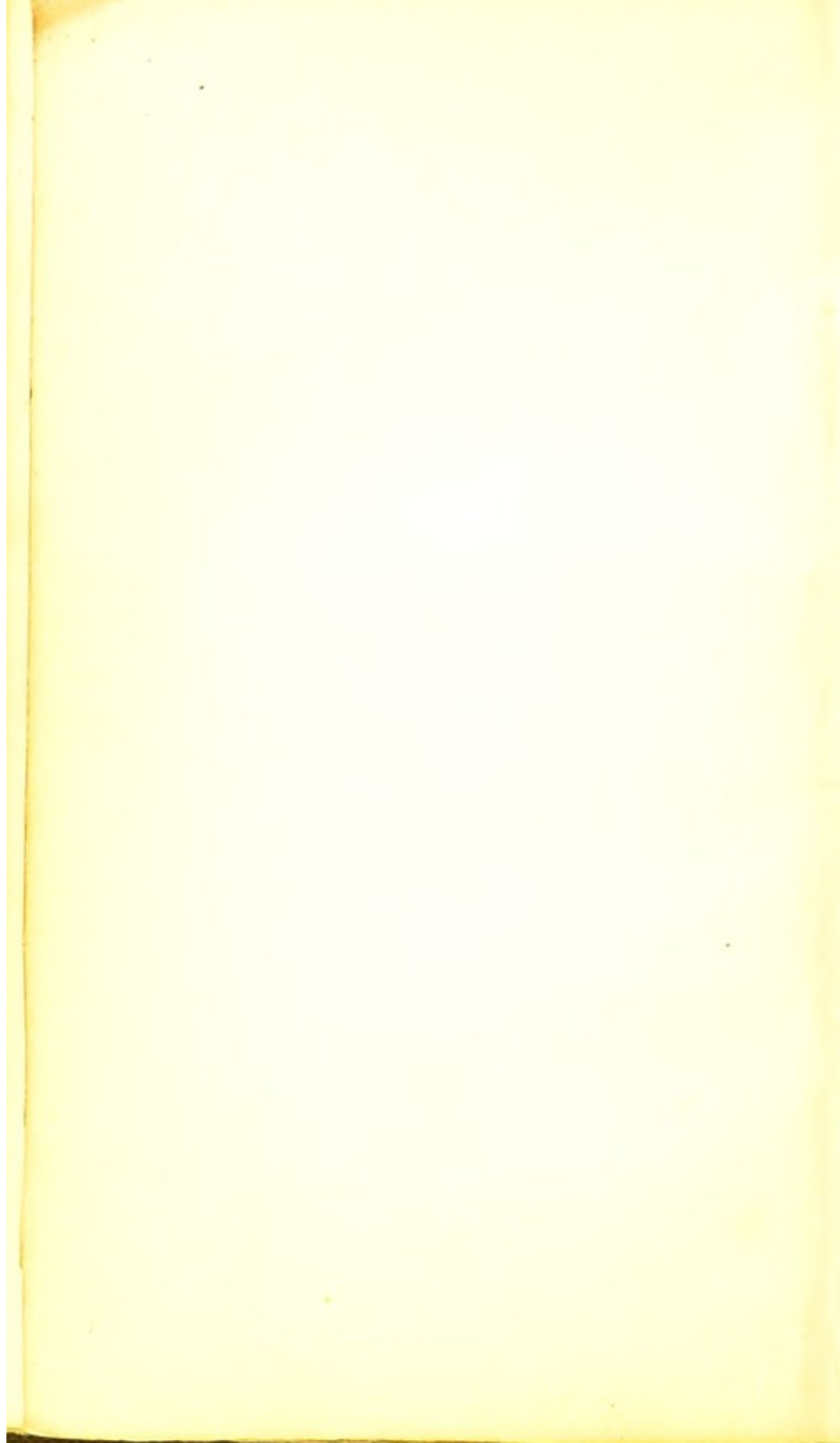
---

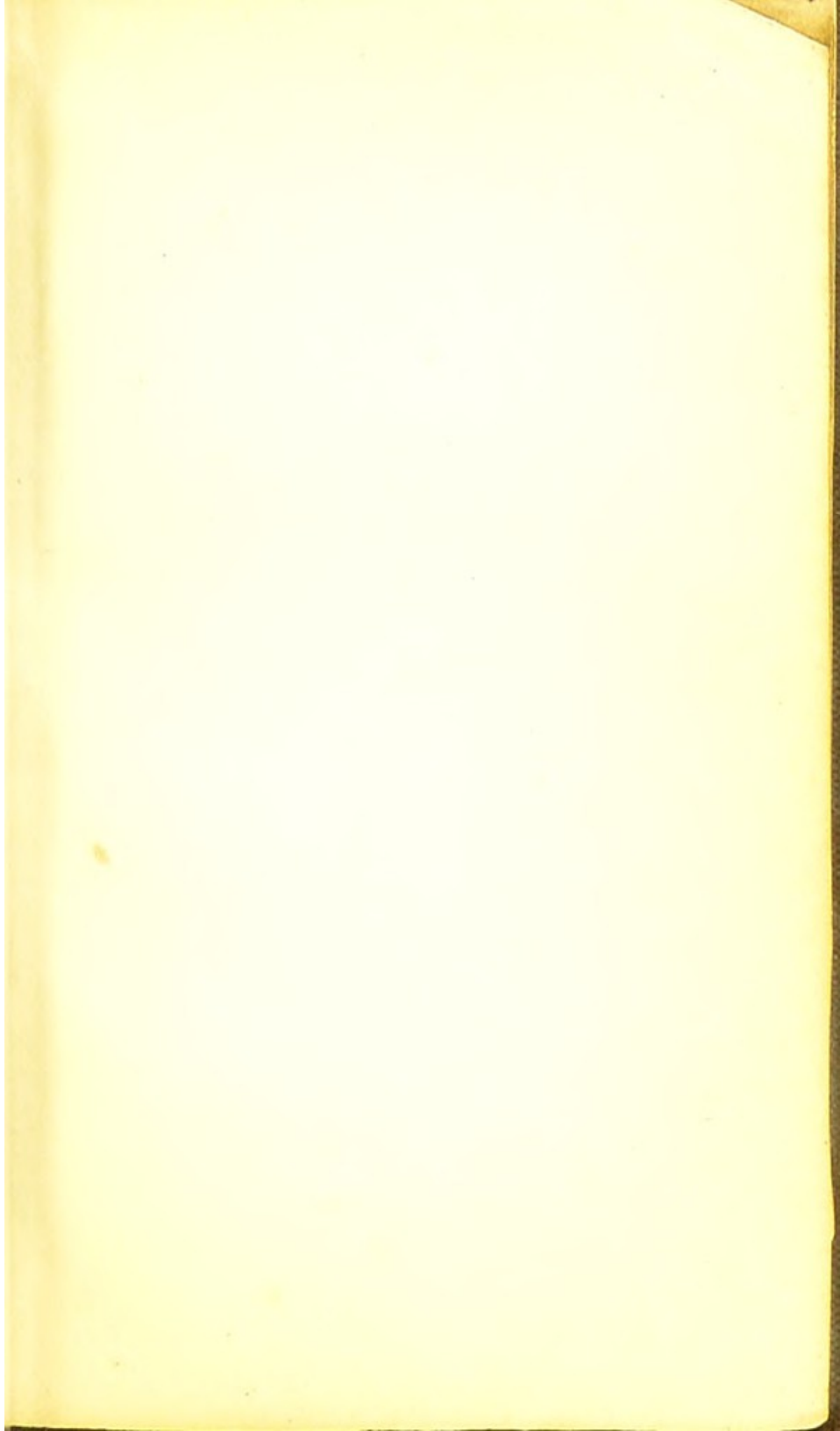
Pil Hyd Tannat 9.5

Sol Hyosey 9.5

---







Pil Hyd e Cret.

Hyd e Cret q<sup>ss</sup>  $\frac{ii}{ii}$

Pul<sup>o</sup> Speaculo q<sup>ss</sup>  $\frac{i}{i}$

Conf Rosae q. s.

---

Hyd e Cret q<sup>ss</sup>  $\frac{ii}{ii}$

Pul<sup>o</sup> Speaculo q<sup>ss</sup>  $\frac{i}{i}$

Conf Rosae q. s.

---

Hyd e Cret q<sup>ss</sup>  $\frac{i}{i}$

Pul<sup>o</sup> Speaculo q<sup>ss</sup>  $\frac{ii}{ii}$

Conf Rosae q. s.

---

PILULA CAMPHORÆ CUM BELLADONNÂ  
 CUM OPIO.

℞ Pulv: Opii ... ..	gr. ss,	✓
Extracti Belladonnæ ...	gr. $\frac{1}{4}$ ,	
Camphoræ ... ..	gr. iij,	
Confectionis Rosæ.		

M.

PILULA FERRI REDACTI.

℞ Ferri Redacti ... ..	gr. iij,	✓
Balsami Peruvianis ...	℥j	

M.



PULVERES.

PULVIS ALBUS.

℞ Hydrargyri Subchloridi ...	gr. j,	+
Potassæ Nitratis ... ..	gr. v,	
Pulveris Sacchari Albi ...	gr. iv.	

M



## PULVIS ALTERATIVUS.

† ℞ Hydrargyri cum Cretâ ... gr.  
     Pulveris Rhei ... gr.  
 M.

## PULVIS AMYLI CUM ALUMINE.

† ℞ Pulveris Amyli ... ʒij,  
     Pulveris Aluminis... ʒj.  
 M.

## PULVIS AMYLI CUM CALOMELANE.

℞ Hydrargyri Subchloridi } part. a  
     Pulveris Amyli ... }

## PULVIS AMYLI CUM ZINCI OXIDO.

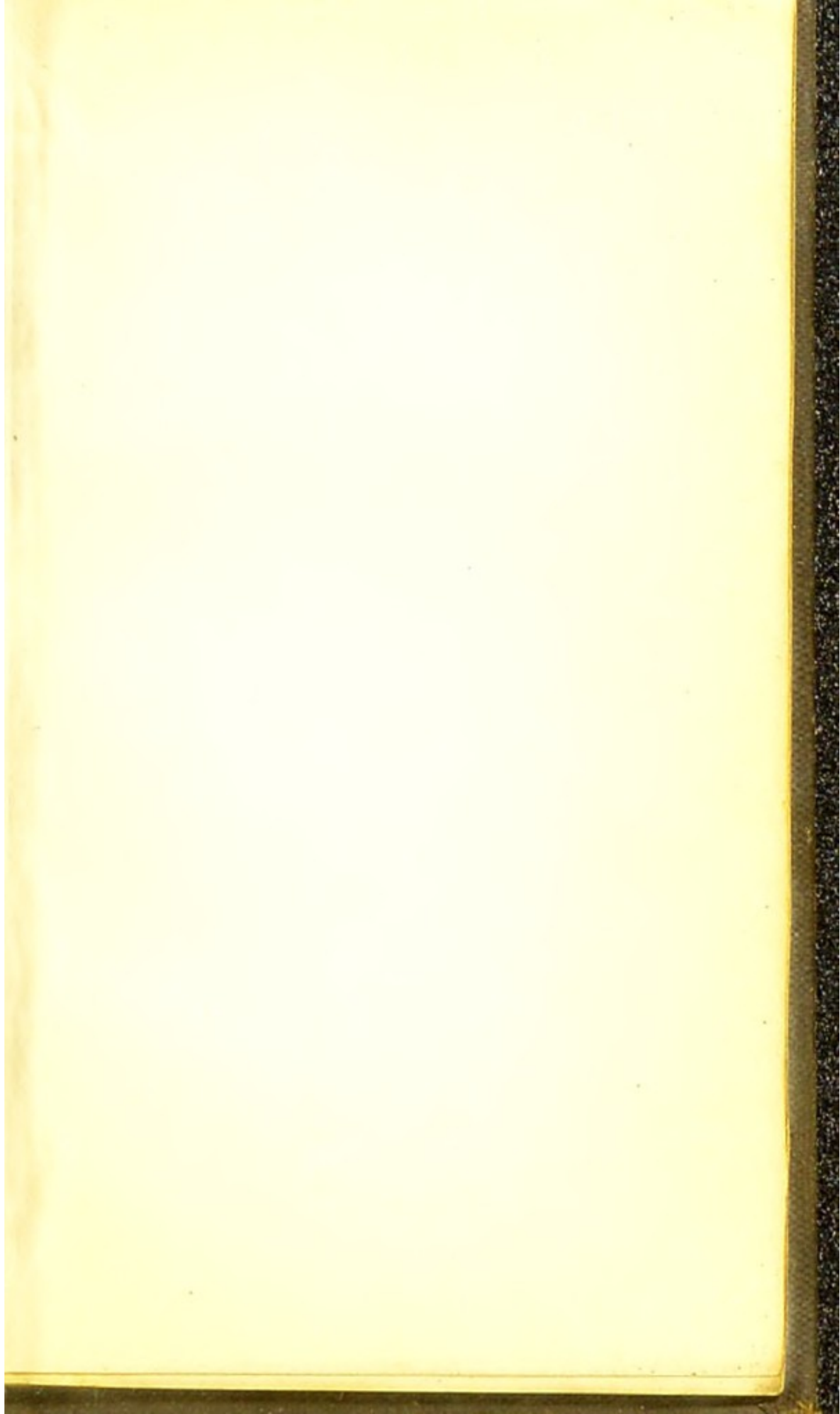
℞ Pulveris Amyli ... ʒj,  
     Zinci Oxidi... ʒx.  
 M. *Ac. Bonio*

## PULVIS SABINÆ CUM ÆRUGINE.

℞ Cupri Subacetatis ... ʒj,  
     Pulveris Sabinæ ... ʒiij.  
 M.

Pulo. Bissath. Beyond

10





For Tongue

Caloucel 1 pt

Pule Drag Co pts IV.

---

Pule Dod of Ae Horice

Dodofom pt I...

Ae Horice pts III

---

## PULVIS CALOMEL. CUM ZINCI OXID.

℞ Calomelanos ... .. ʒj,  
 Zinci Oxidi... .. ʒviij.

M.



## UNGUENTA.

## UNGUENTUM FLAVUM.

℞ Hydrargyri Oxidi Flavi ... gr. iv,  
 Adipis ... .. ʒj.

M.

## UNGUENTUM HYDRARG. AMMONIAT. MITIUS.

℞ Unguentum Hydrargyri }  
 Ammoniati ... } part. æq.  
 Unguenti Cetacei ... }

M.

## UNGUENTUM HYDRARGYRI MITIUS.

℞ Unguenti Hydrargyri ... ℥j,  
 Adipis ... ℥iv.  
 M. Vide infra p. 36.

## UNGUENTUM HYDRARGYRI CINEREI.

℞ Adipis Preparat. ... ℥vj,  
 Sevi ... ℥iv  
 Hydrargyri... ℥v.  
 Fiat Ung.

℞. Hydrargyri } āā ℥i  
 Lanolini }  
 Olei Olivae opt. fl. ℥ss.

M. ft. Oleum cinereum

℞. Resinæ ℥ss  
 Lanolini ℥i  
 Ol. Olivae ℥ss

Ft. Ung.



Calomel cream

Calomel gr x . . .

Vaseline ad  $\overline{3\text{ss}}$

---

Ung Iodofornii

Iodofornium  $\overline{3\text{ss}}$

Paraffin moll  $\overline{3\text{ss}}$

---

Ung Boracii

Acid Boric  $\overline{3\text{ss}}$

adipis  $\overline{3\text{ss}}$

---

Ung. Crestini gr v - xv.

Lanolin anhydric  $\overline{3\text{vii}\text{ss}}$

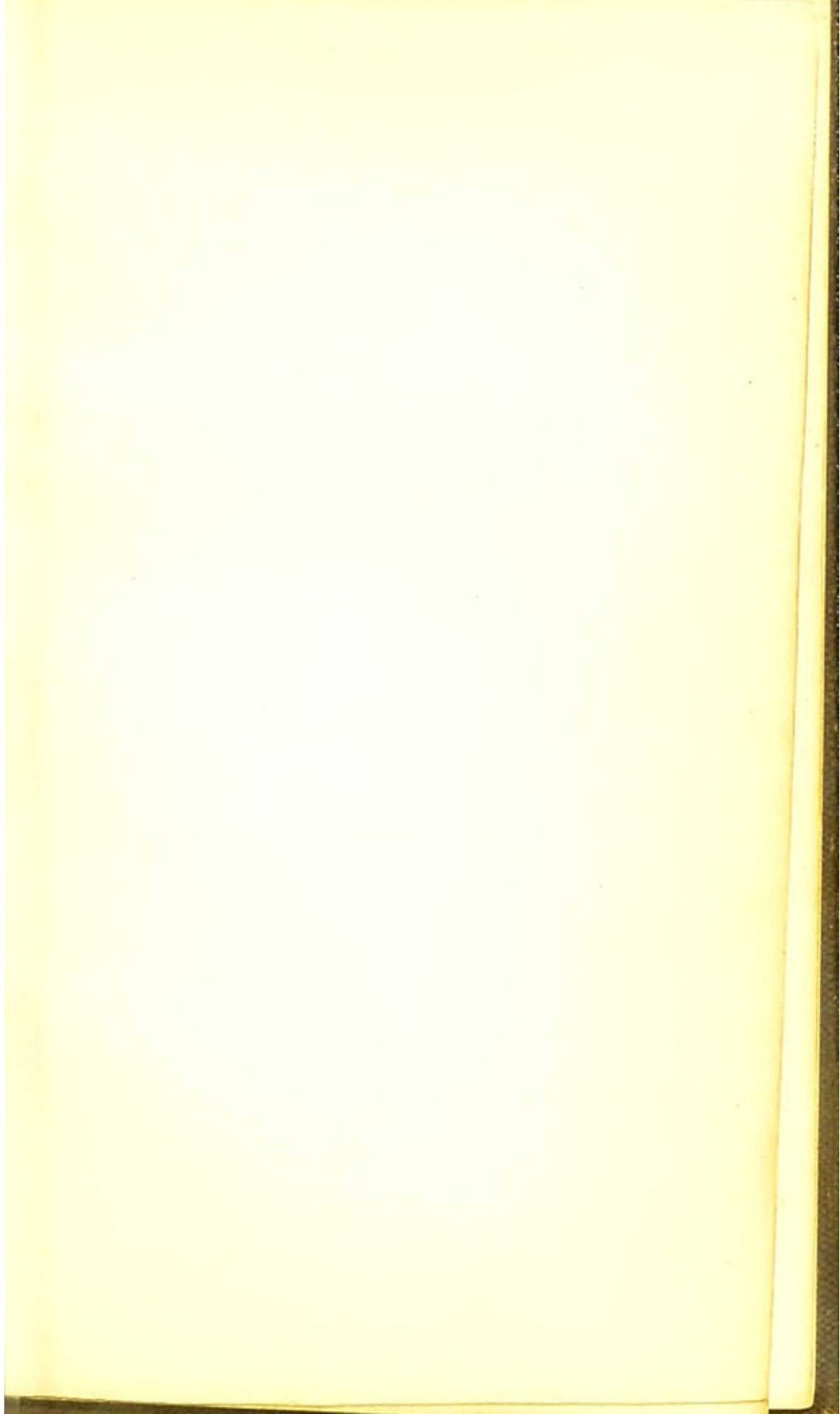
ol. Oliv

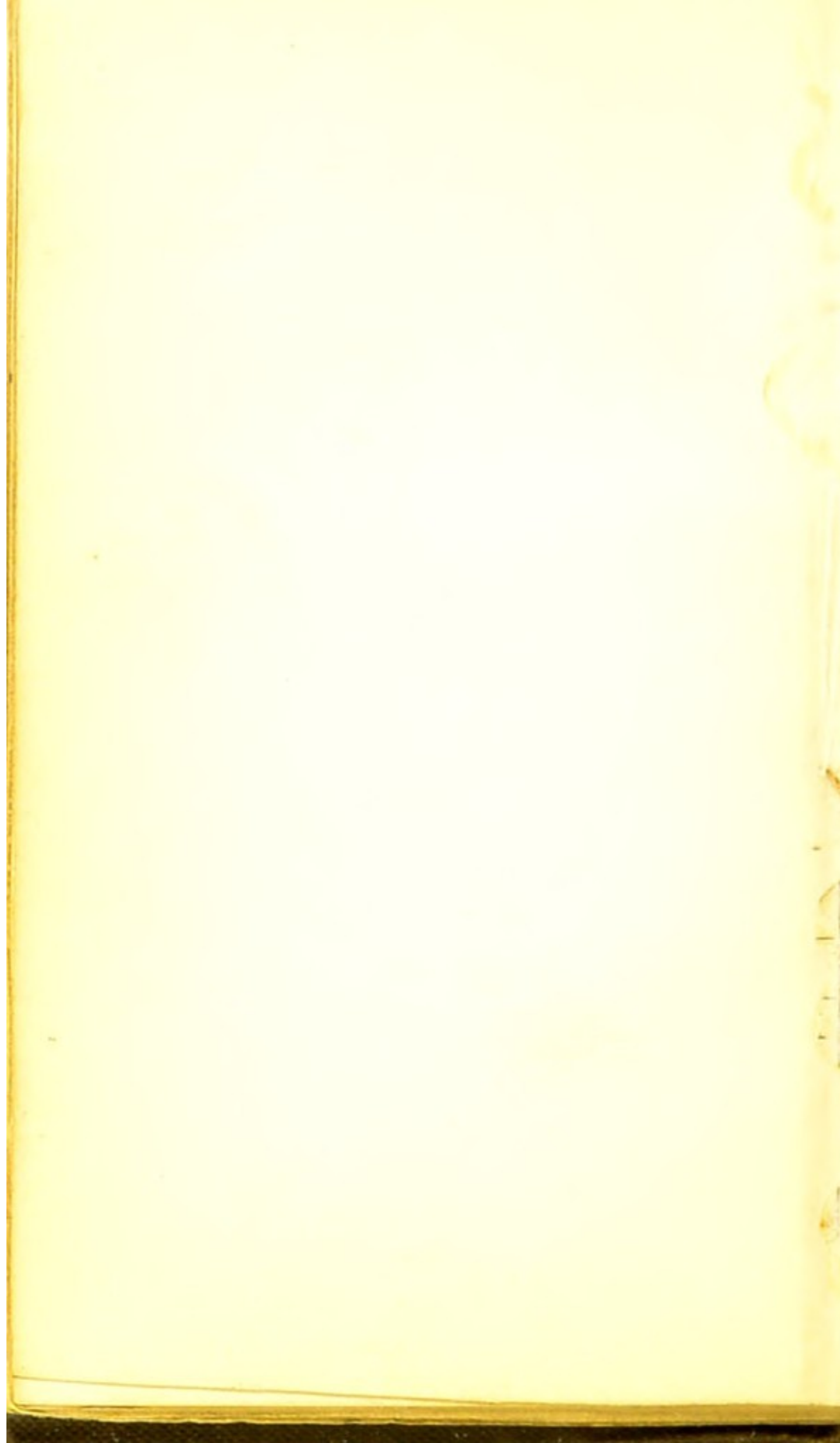
$\overline{3\text{ss}}$

Mica trachysima









## ORDINARY DIET.

<i>Breakfast.</i>	Cocoa. Bread and Butter.
<i>Dinner.</i>	Meat. Sunday—Cold Beef. Monday—Soup with Rice and Onions in it. Tuesday—Australian Meat, hot. Wednesday—Roast Beef. Thursday—Cold Beef or Mutton. Friday—Hashed Beef or Mutton. Saturday—Boiled Beef. Potatoes, and on Saturday another vegetable.
<i>Tea.</i>	Tea. Bread and Butter.
<i>Supper.</i>	Gruel.
<i>Daily allowance.</i>	6 oz. of Meat when dressed. 1 lb. of Bread. 1 pint of Cocoa. 1 pint of Tea. 1 pint of Gruel. 1 oz. of Butter.



RULES FOR INUNCTION OF MERCURIAL OINTMENTS.

---

- I.—Every night take a warm bath for fifteen minutes.
- II.—Rub a piece of the ointment, as large as the last joint of the forefinger, into some part of the body every night with the palm of the hand, for a quarter of an hour.
- III.—The ointment is to be rubbed into one of the following places:—Inner side of thighs, avoiding the groins and purse; sides of chest, avoiding the hairy parts of armpits; inner surfaces of arms and forearms; buttocks; back or belly.
- IV.—Never rub into the same place two nights running.

V.—After rubbing in the ointment, leave it without washing any off until the next bath.

VI.—Clean the teeth twice a day.

VII.—Use the gargle four times a day.

DIRECTIONS FOR TREATMENT OF  
SCABIES WITH SULPHUR  
OINTMENT.

---

The whole body must be scrubbed with soap, hot water, and a flannel to-night. Then rub ointment into all the skin, especially where the disease is worst. Do not wash the ointment off, but let it stay on until the third morning. Then soap again before putting on clean clothes.

All the under-clothes and bed clothes must be boiled before they are again used, or else the disease will be caught from them anew. All cloth clothes to be well baked or ironed with a scorching iron.



## RULES FOR USING THE INJECTION.

---

I.—Get a Glass Syringe holding about four teaspoonfuls, and having a bulbous end.

II.—Make water, and inject some tepid water before using the Injection, to clean and clear the passage.

III.—Inject so as to distend the urine canal, let the Injection stay in ~~half~~ <sup>2</sup> a minute, <sup>3</sup> do this twice each time.

IV.—Repeat the Injection each time after making water, except at bedtime.

V.—The Injection may be weakened by the addition of water when the discharge has ceased, and gradually discontinued.

N.B.—Every patient must keep his person thoroughly clean by washing with soap and water every day.



And Lupa Del	3 <sup>00</sup>
Leg. Ralio	3 <sup>17</sup>
R. Calechur	3 <sup>57</sup>
R. Ome	3 <sup>117</sup>
Sp. Chlorof	3 <sup>77</sup>
Ag. Curruvum ad	3 <sup>37</sup>

PRINTED BY  
 ADLARD AND SON, BARTHOLOMEW CLOSE.

Savarez's Capsules.

Wm Lecher M.D. & Chb.

80 Bartholomew Close

Copaib ʒij

Resin ʒij

Ac Sulph dil ʒij

Aquam ad ʒij

Roseb Tree

Mist Copaiuae Resinae

Rx. Copaiua Resina grs xv.  
Ac phosph oil <sup>ʒij</sup> ~~(ʒij)~~  
~~(Spt. Rect.)~~

Pulv. Trag Co grs xv

Syr. Zingiberis ʒij

Aquam ad ʒij

Misce

Rx. Resina Copaiua ʒij

ol Amyg. ʒij

P. Gum. Resina ʒij

Ac phosph oil ʒij

Syr Zingib ʒij

aq ad ʒij

