

KCL Department of Biophysics: full plate series: glass slides of images relating to research conducted in the Biophysics Unit and subsequently Department of Biophysics

Contributors

King's College London, Department of Biophysics MRC Biophysics Research Unit

Publication/Creation

1953-1965

Persistent URL

<https://wellcomecollection.org/works/mbutva29>

License and attribution

You have permission to make copies of this work under a Creative Commons, Attribution, Non-commercial license.

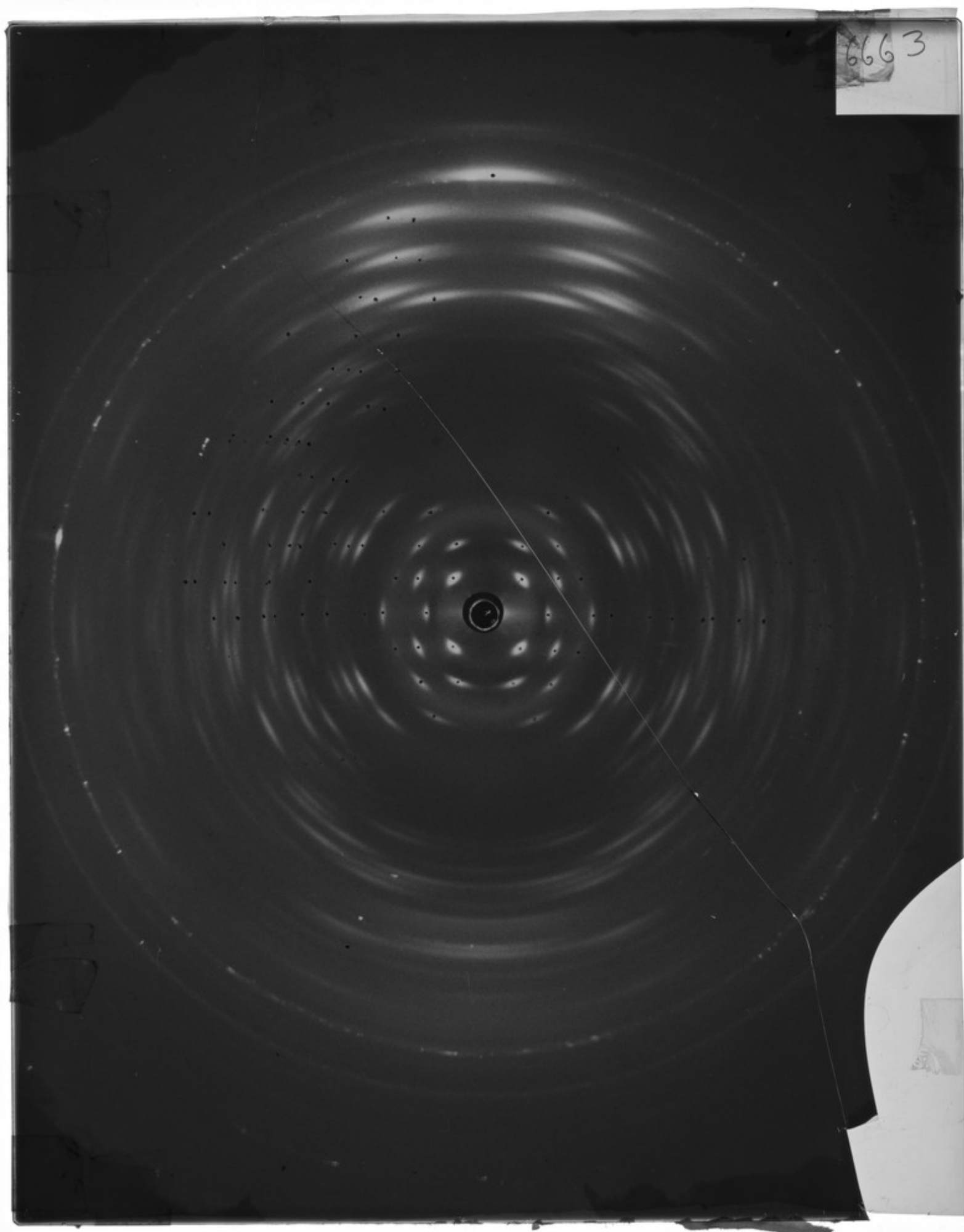
Non-commercial use includes private study, academic research, teaching, and other activities that are not primarily intended for, or directed towards, commercial advantage or private monetary compensation. See the Legal Code for further information.

Image source should be attributed as specified in the full catalogue record. If no source is given the image should be attributed to Wellcome Collection.

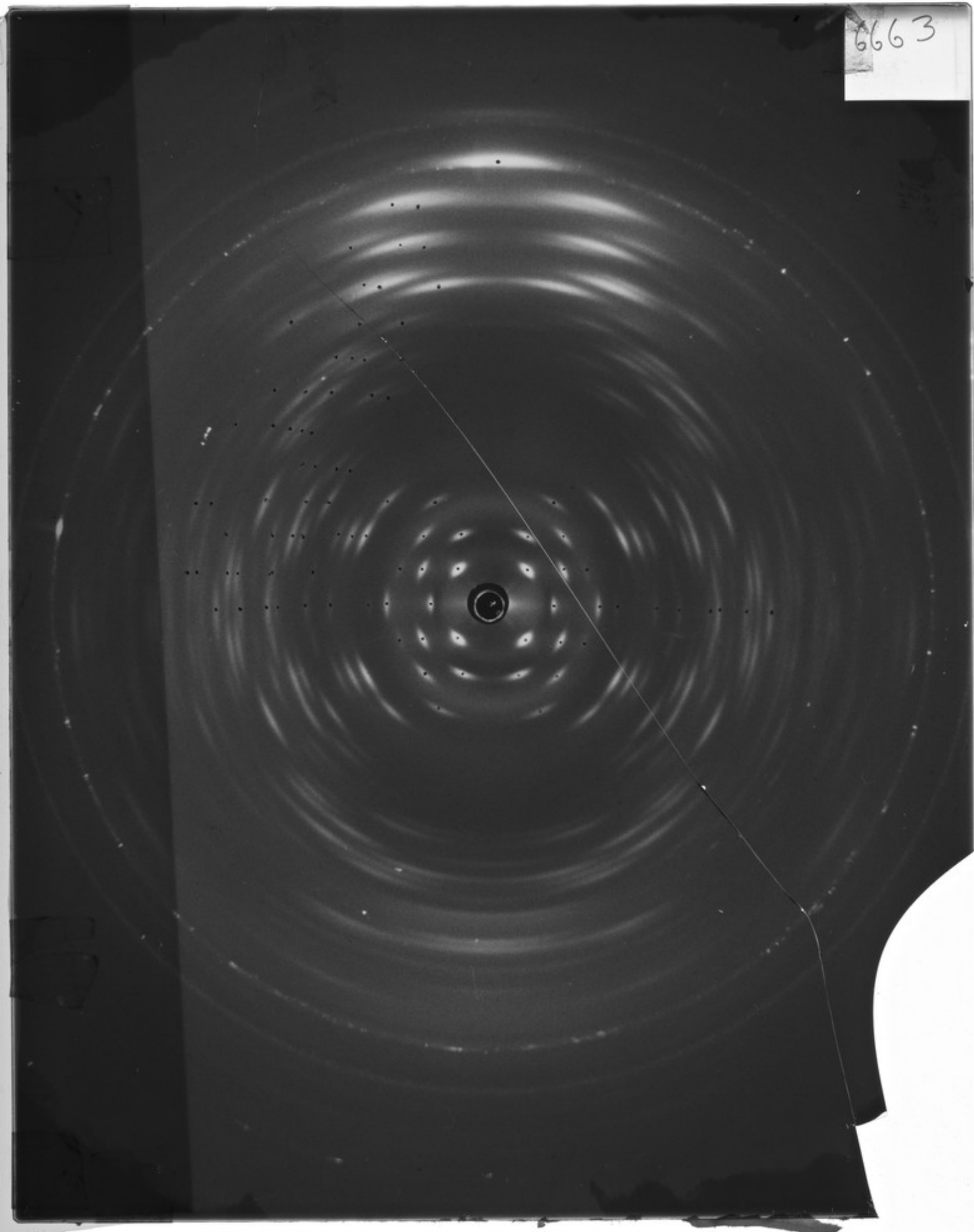


Wellcome Collection
183 Euston Road
London NW1 2BE UK
T +44 (0)20 7611 8722
E library@wellcomecollection.org
<https://wellcomecollection.org>

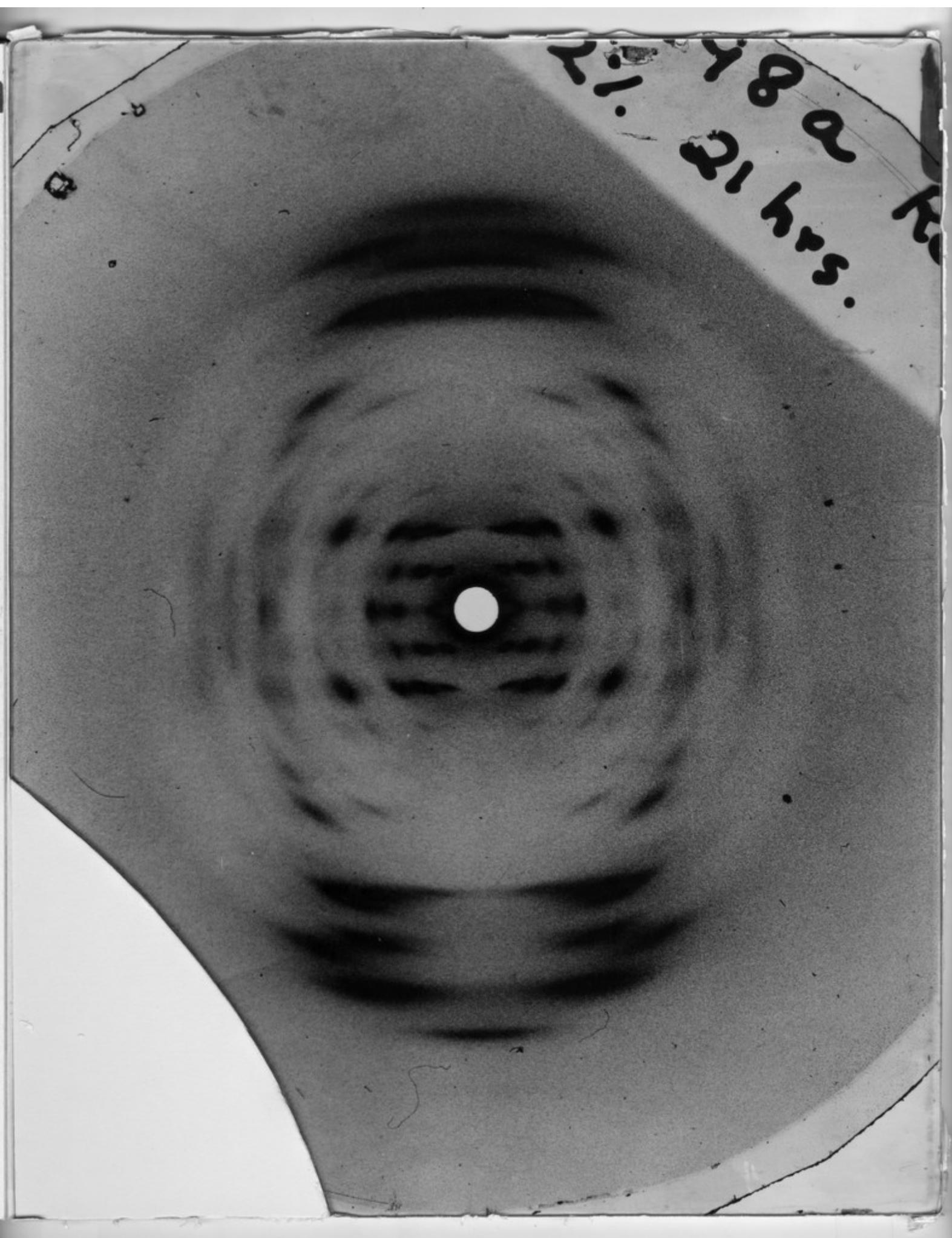
6663

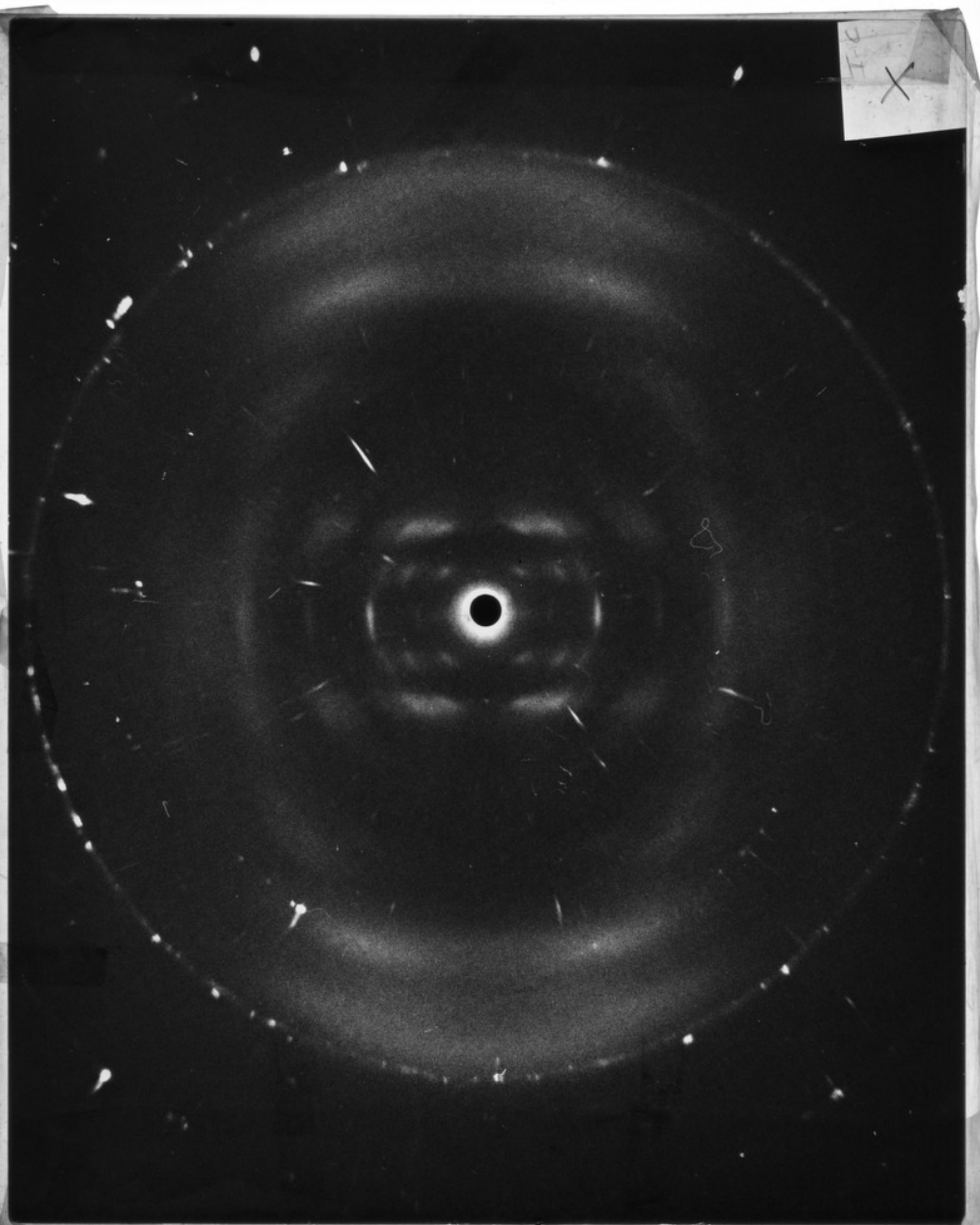


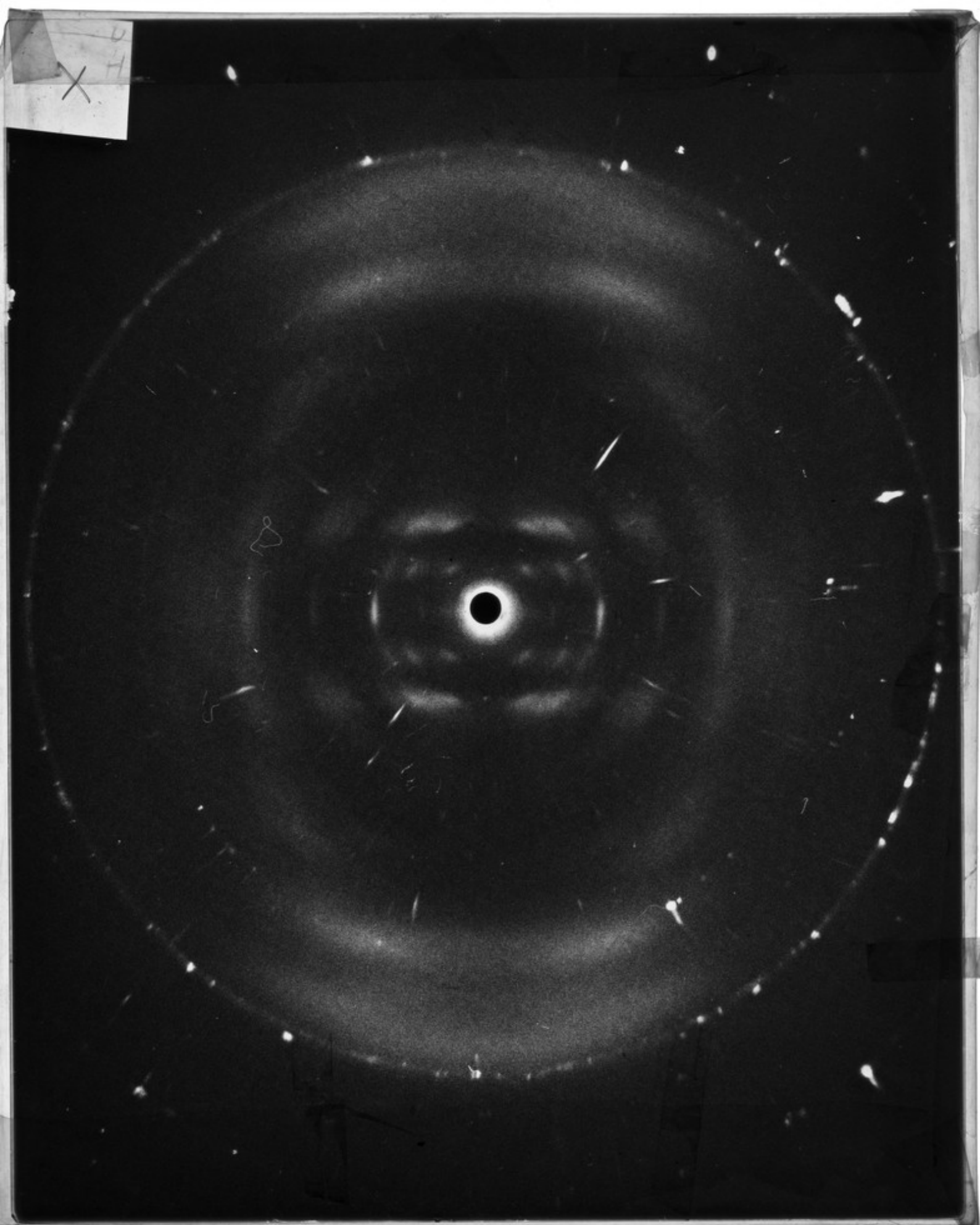
6663



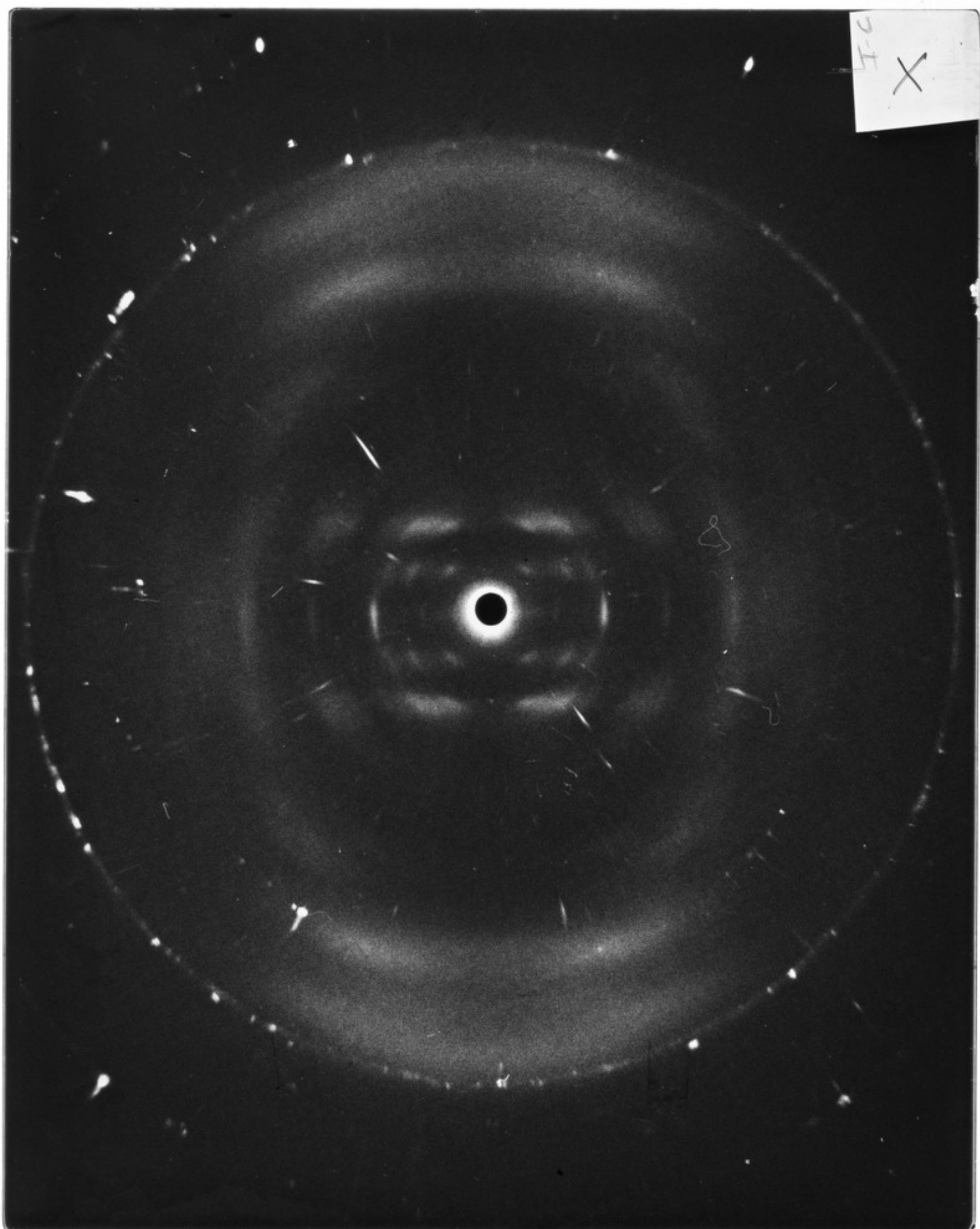
Y 8 a
21 hrs.







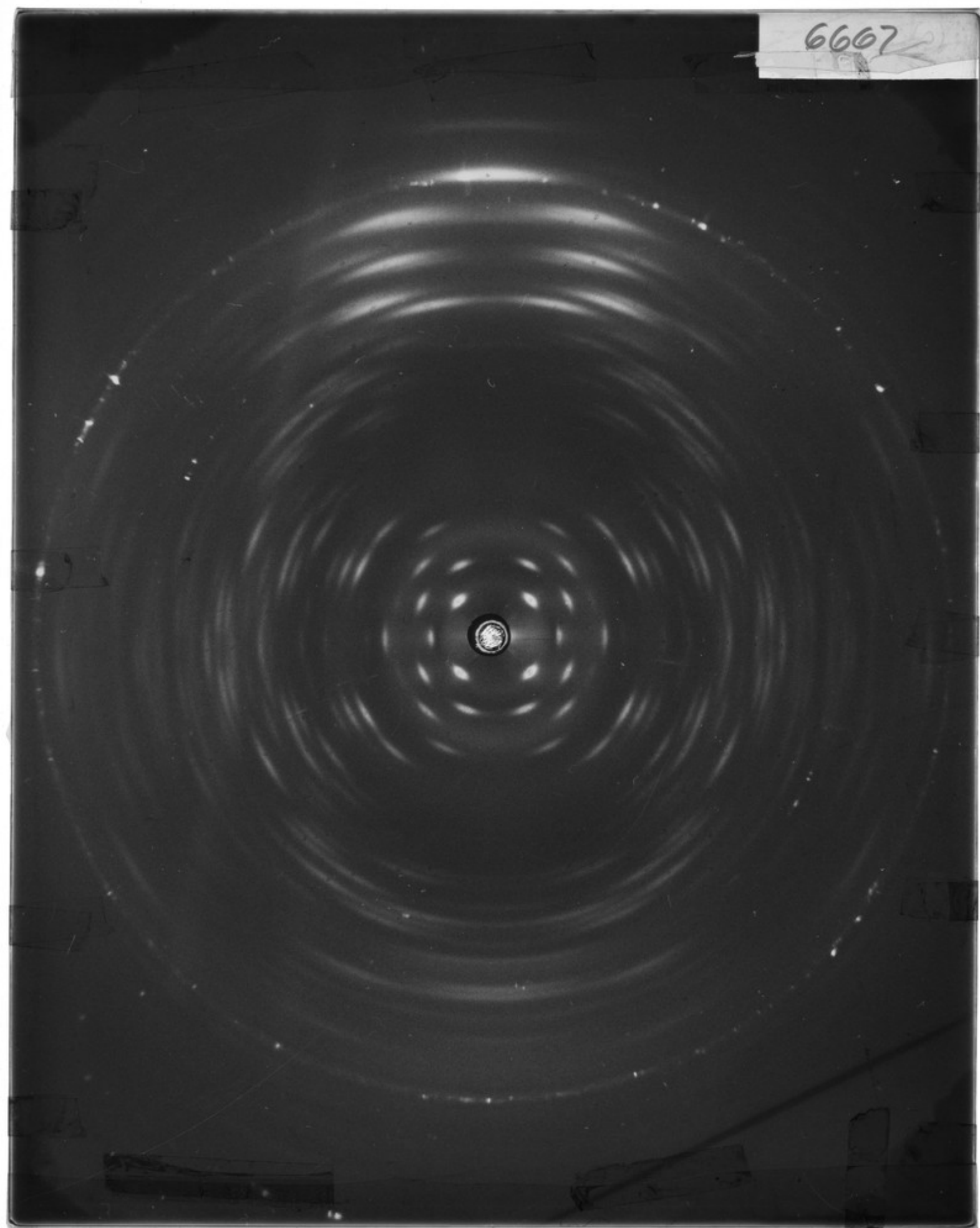
2-1
X



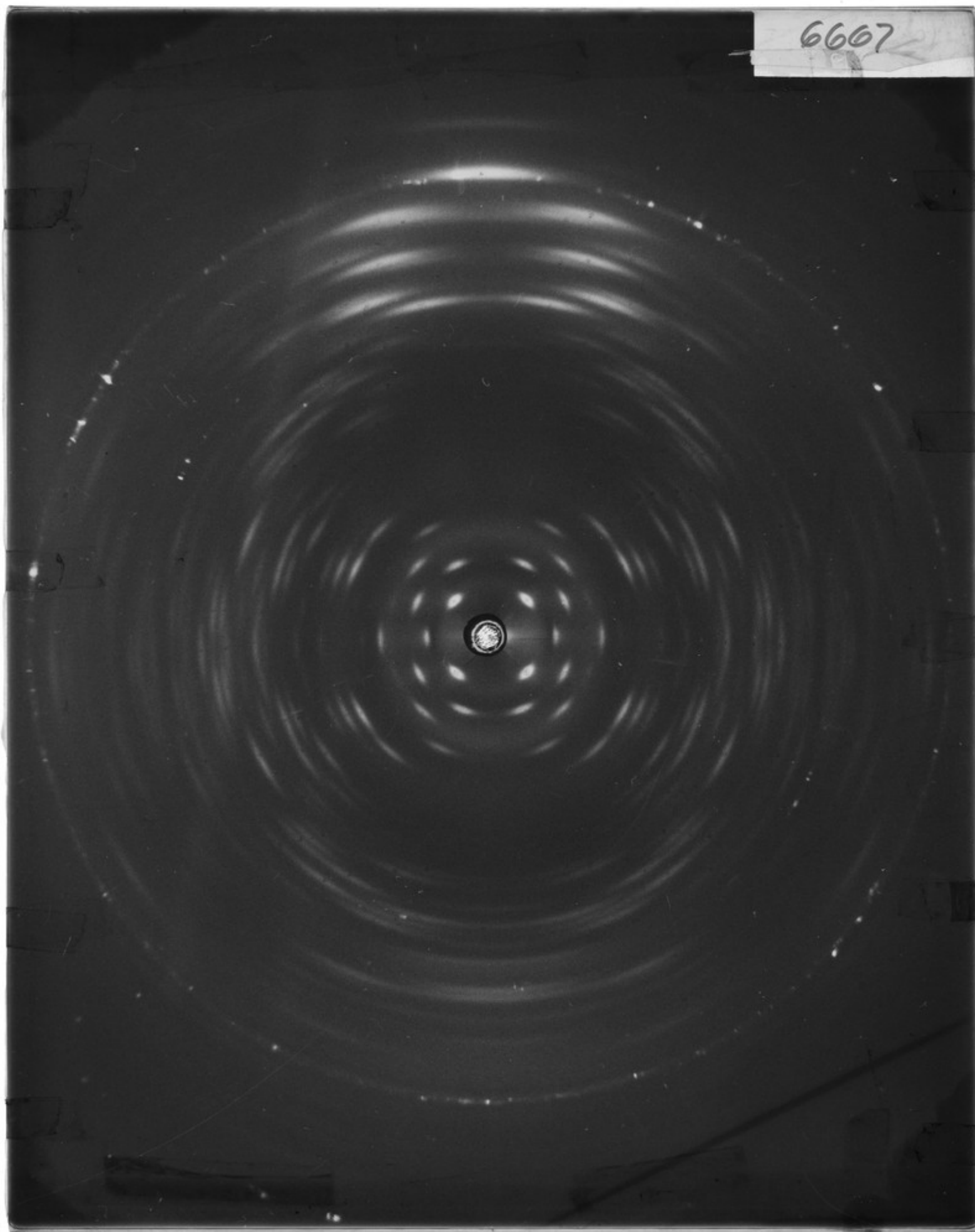
287 x12

287
x12

6667

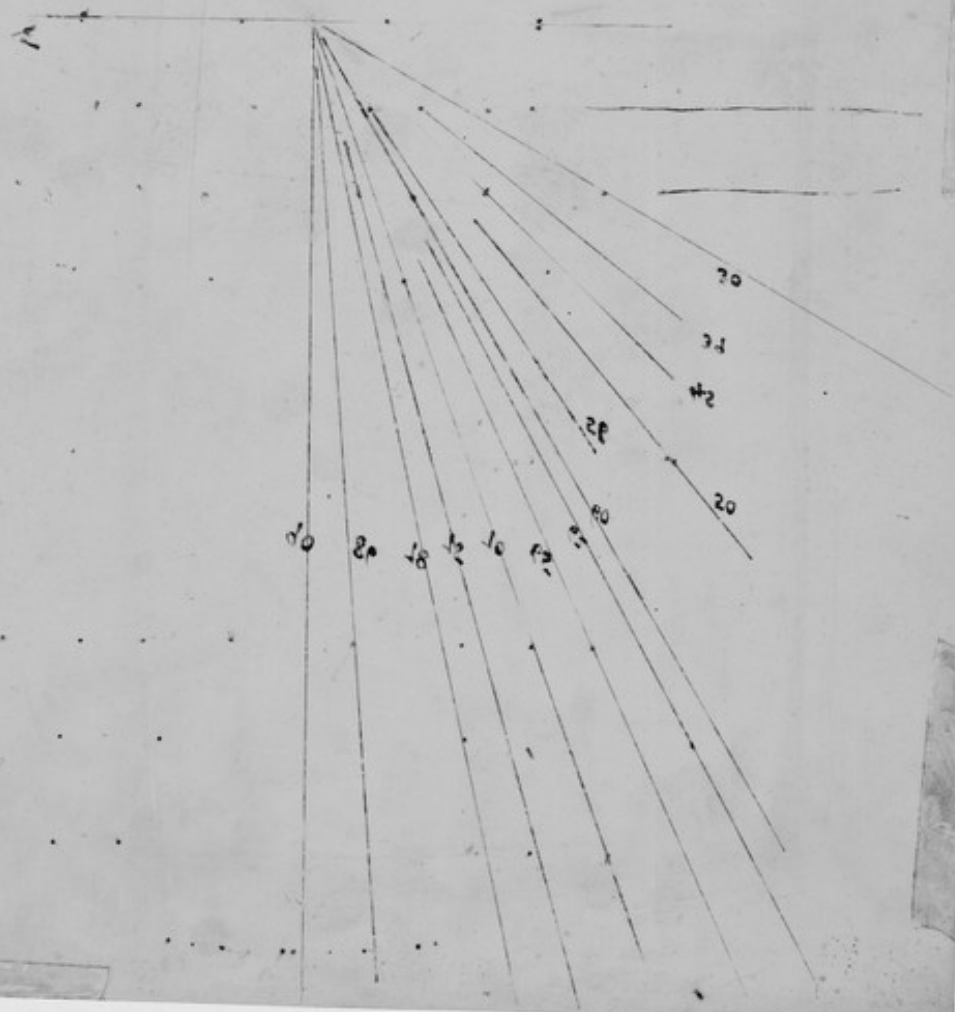


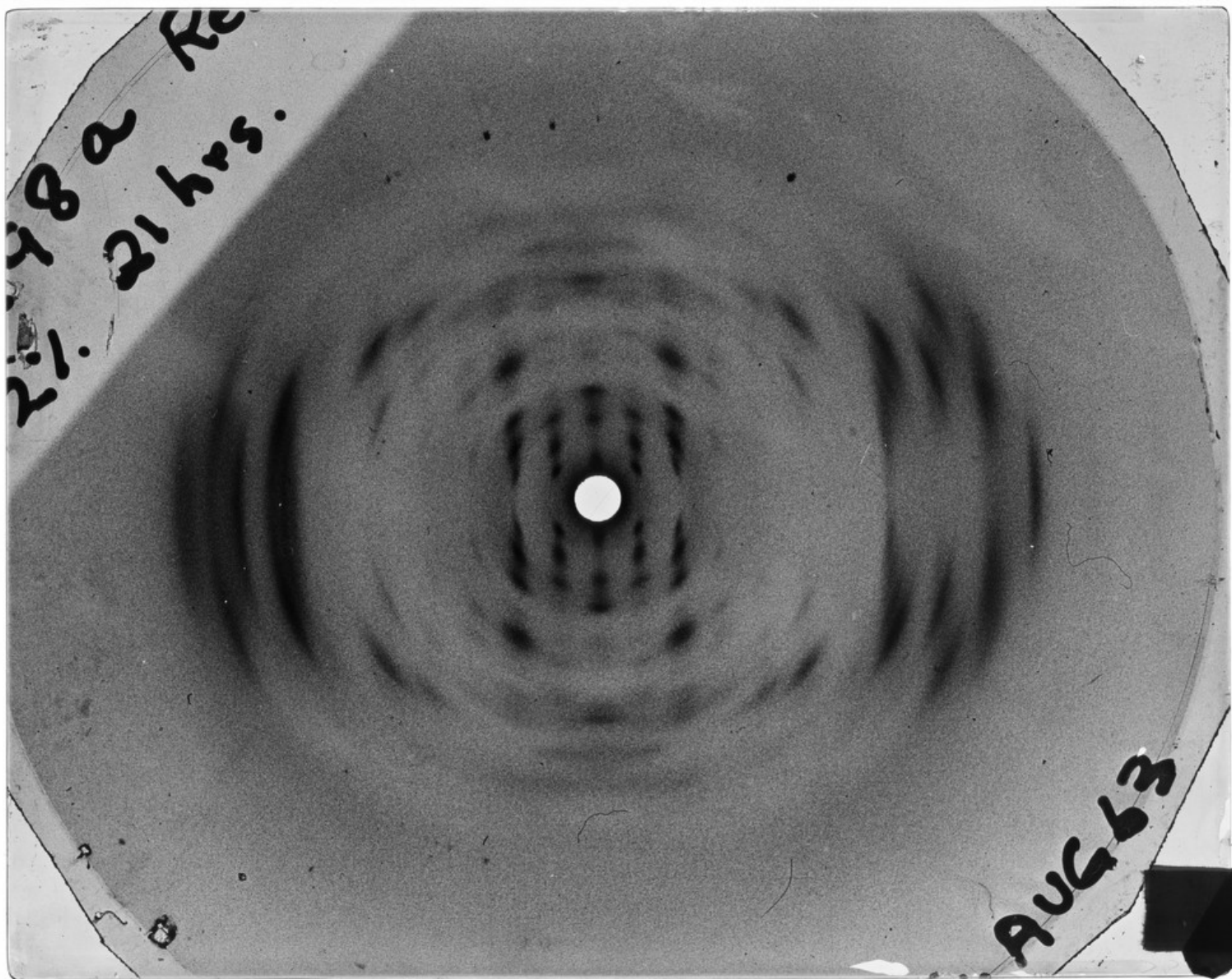
6607



X-ray 317a

03



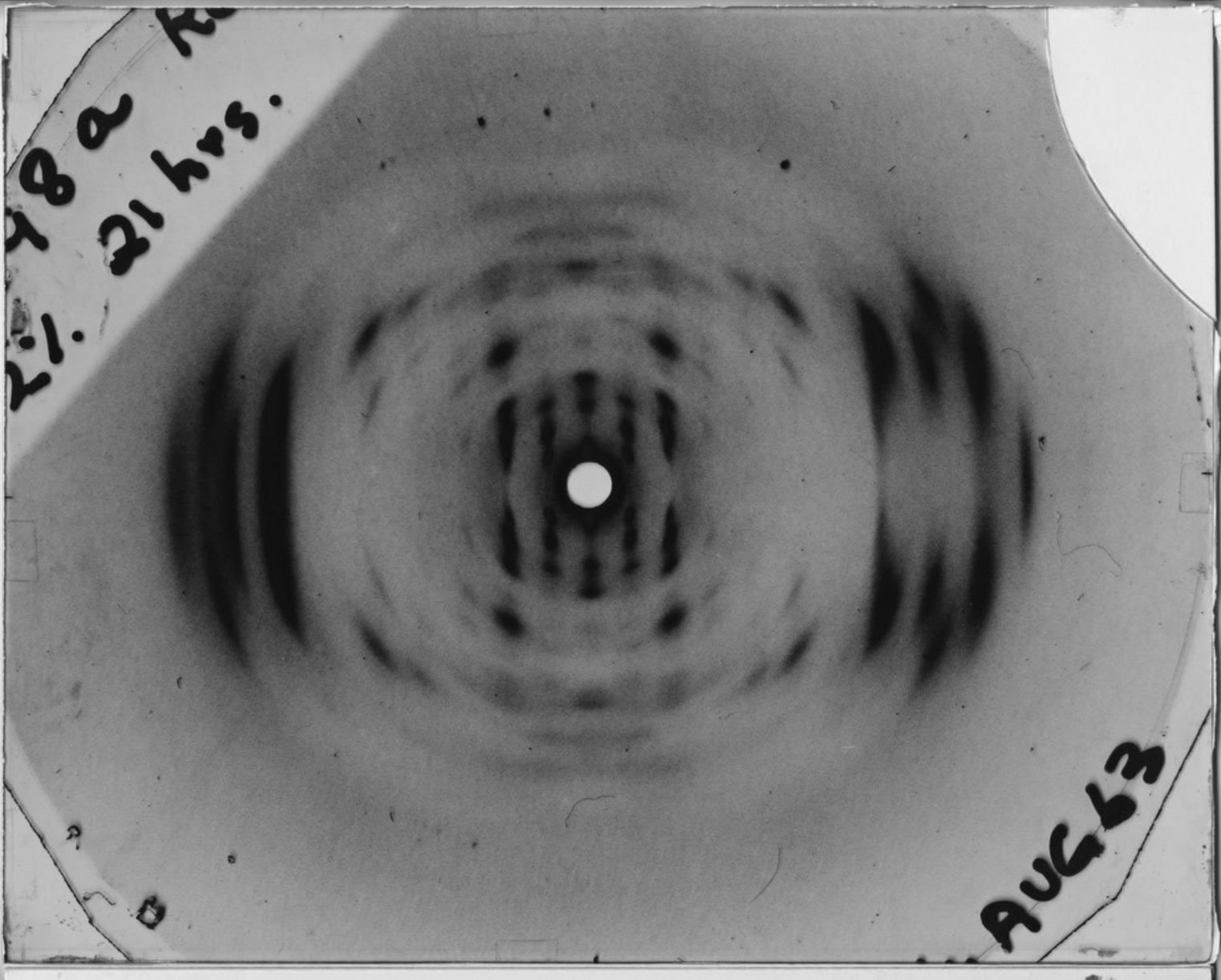


21 has.
282

[Handwritten markings, possibly "JAN 1962"]

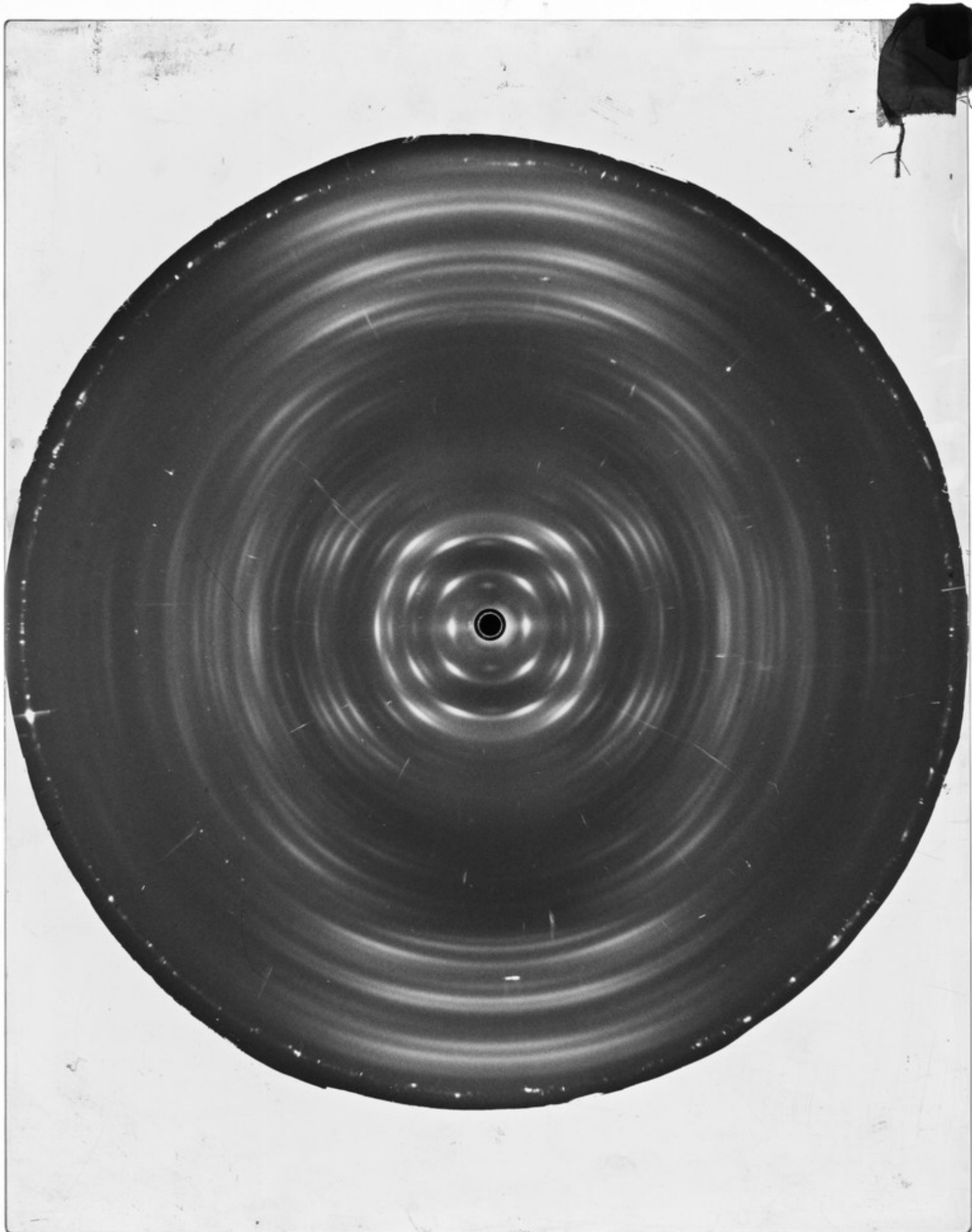
3222

AUG 63



21. 21 hrs.
28 a

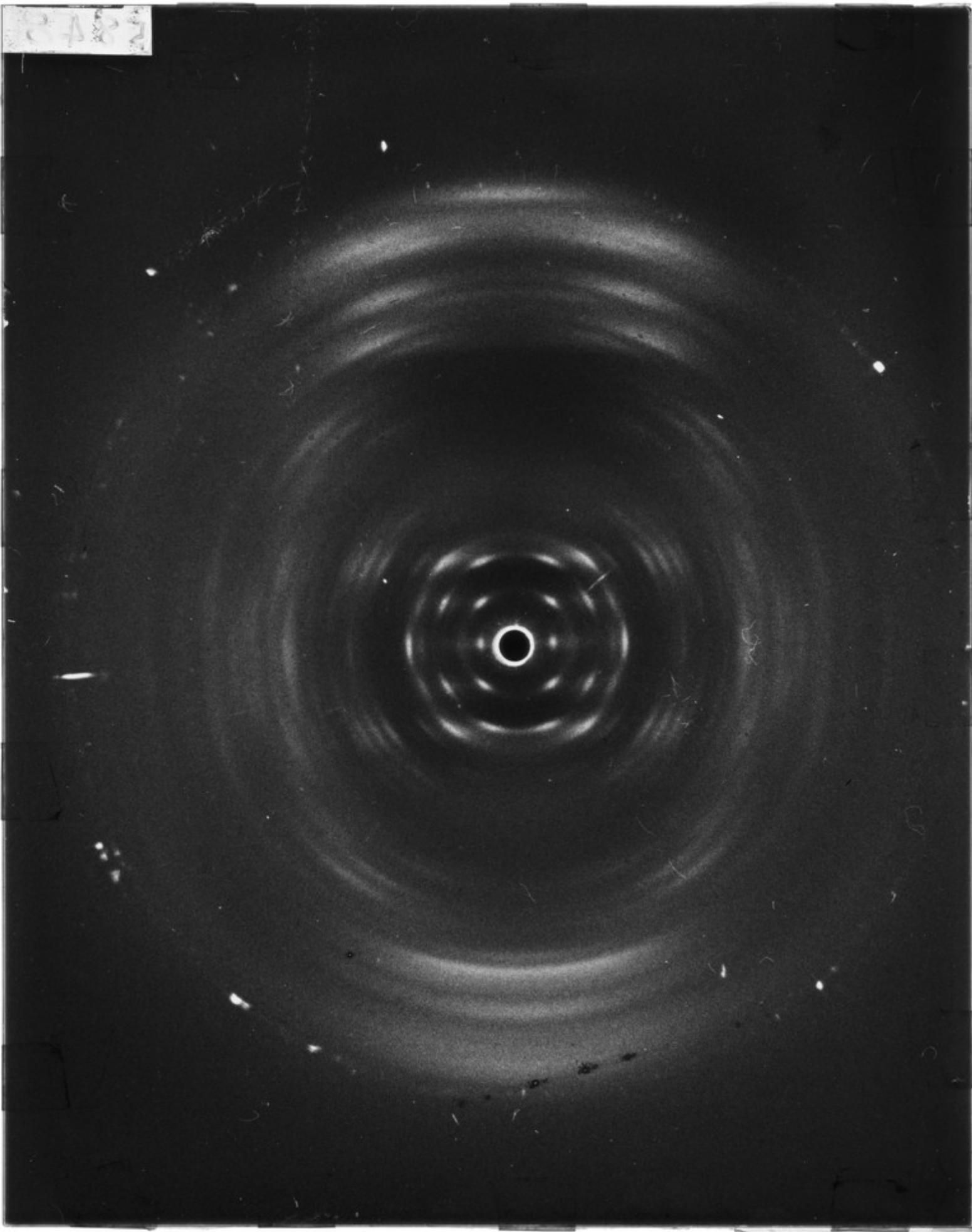
AUG 63



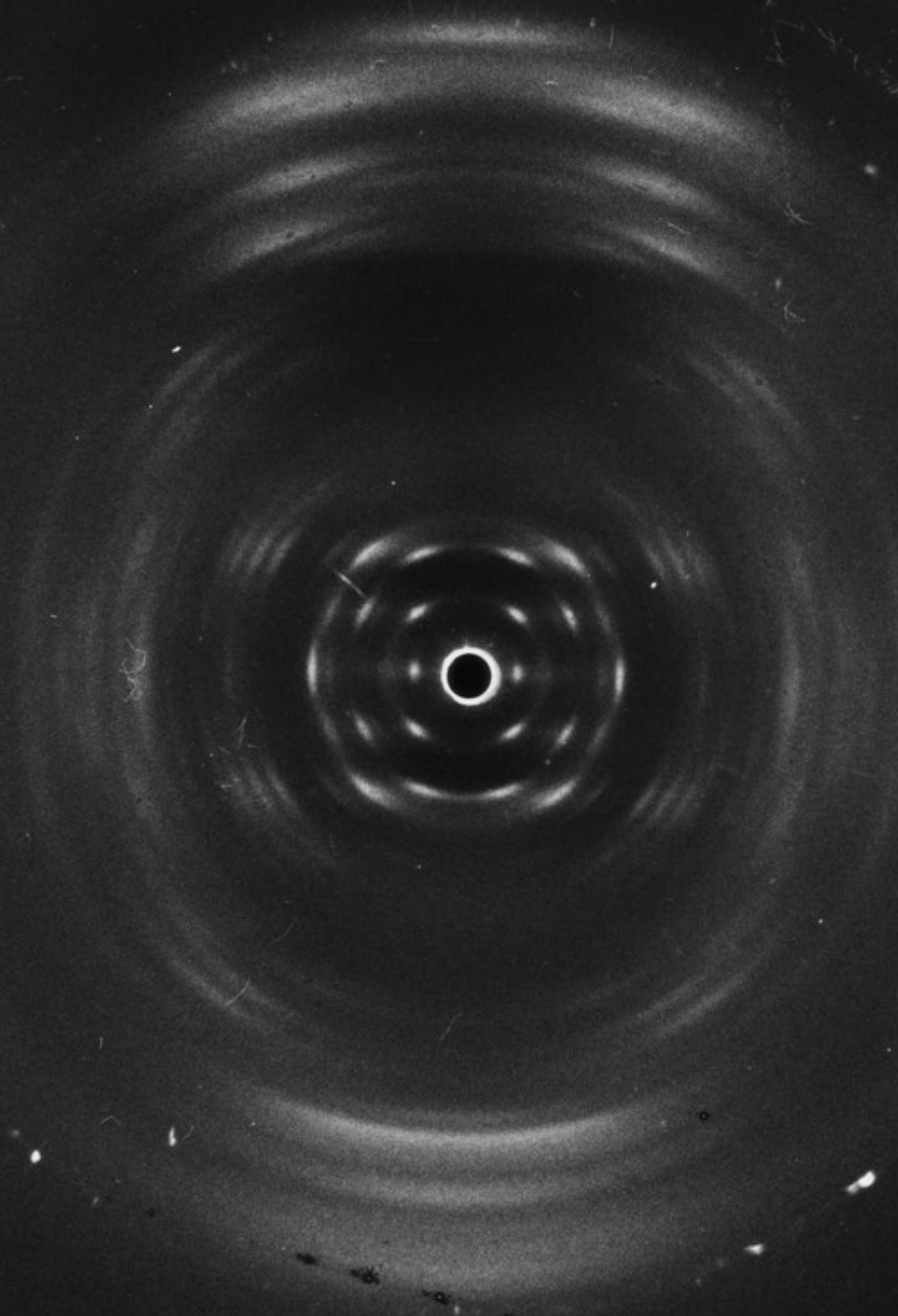
I + C + 0.02 M Cawdylane
5967

AD
Δ

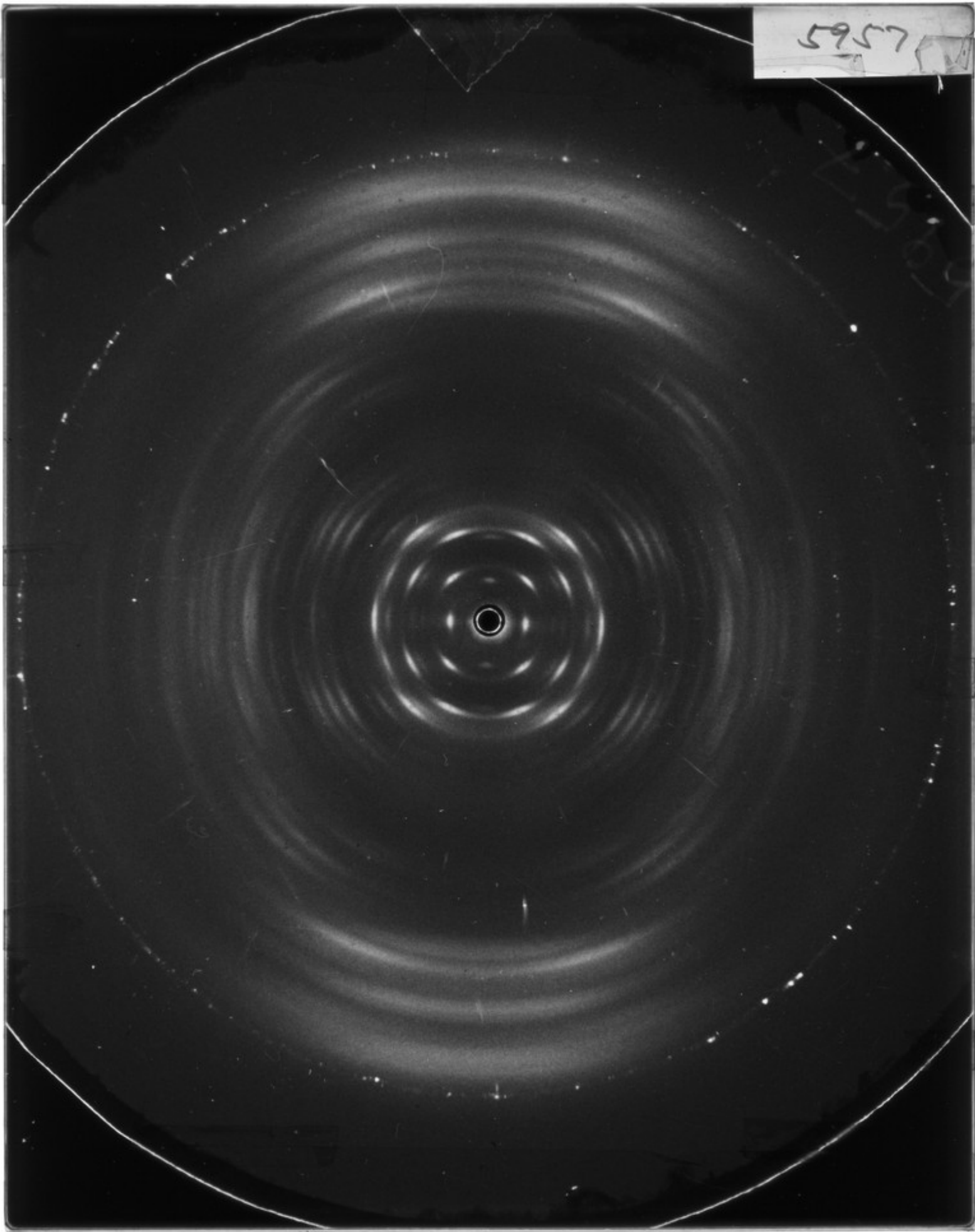
3482



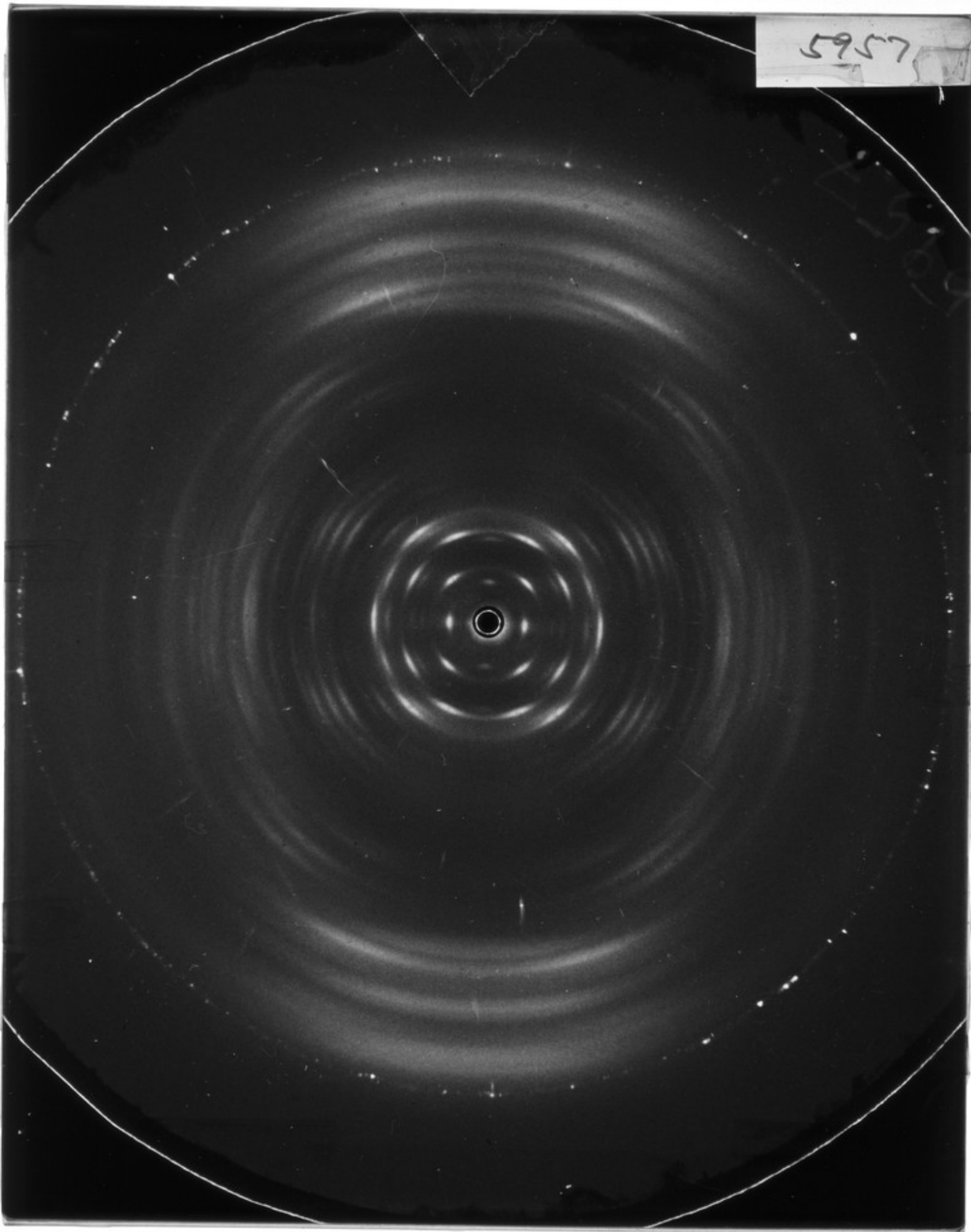
5845



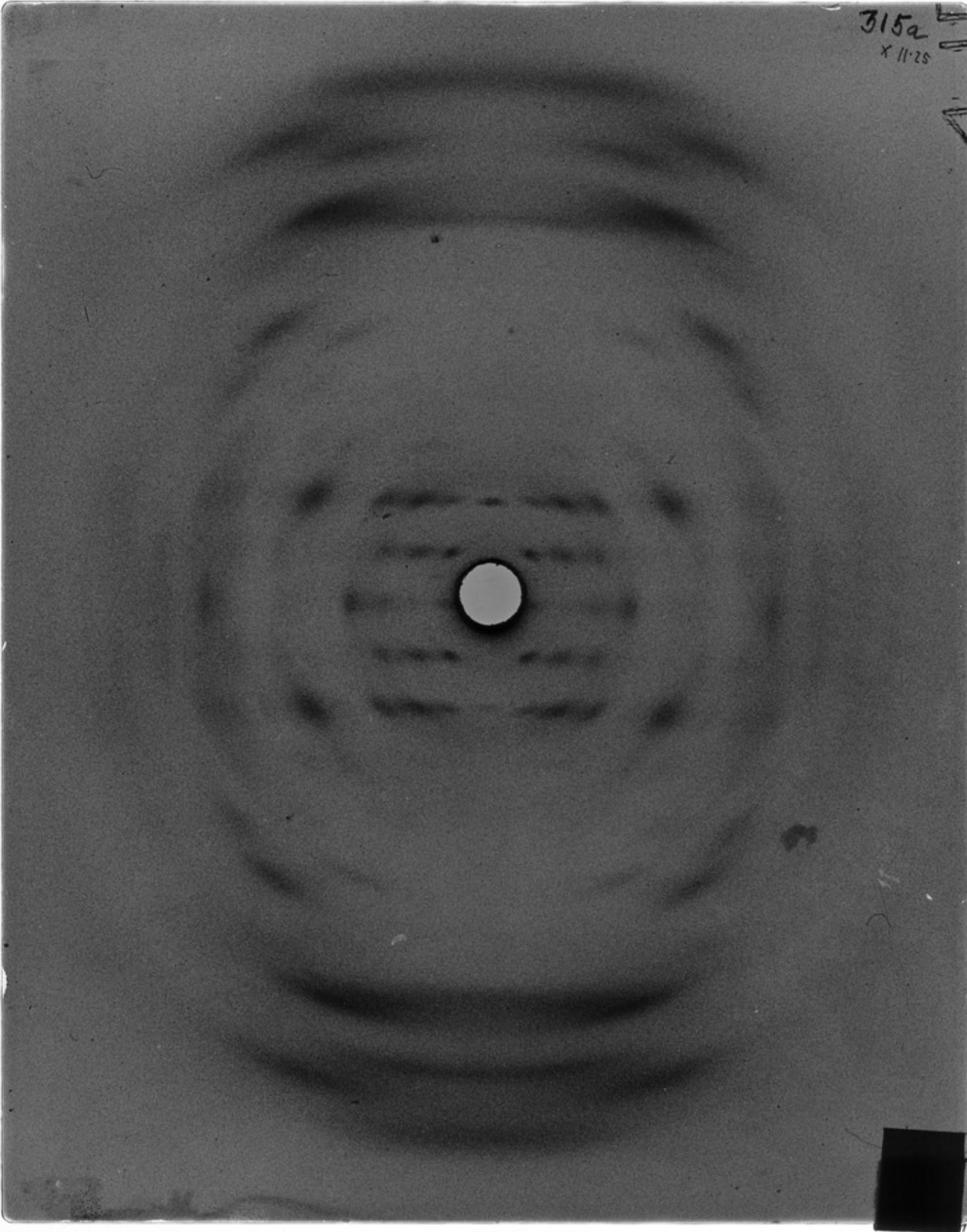
5957



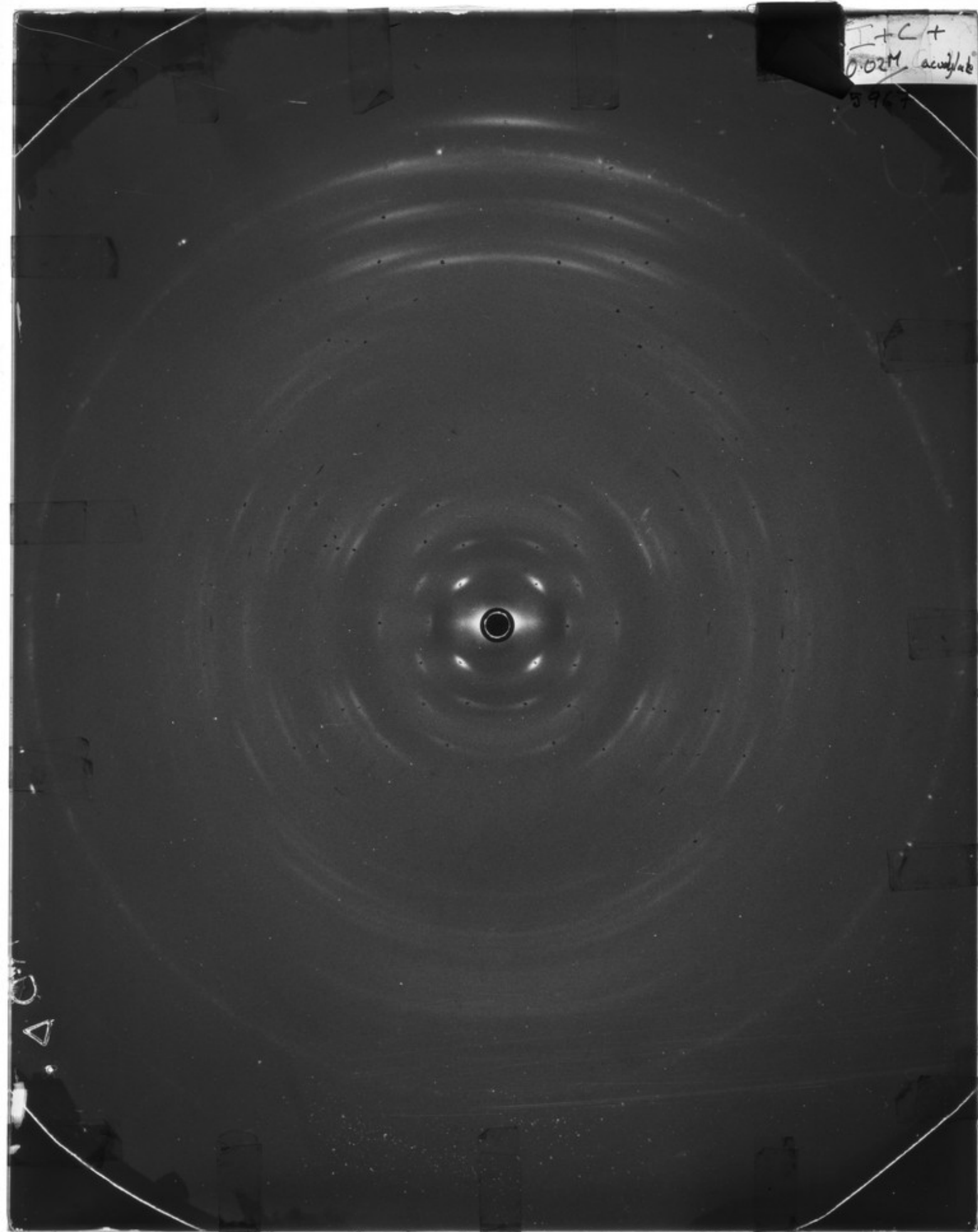
5957



315a
X 11-25

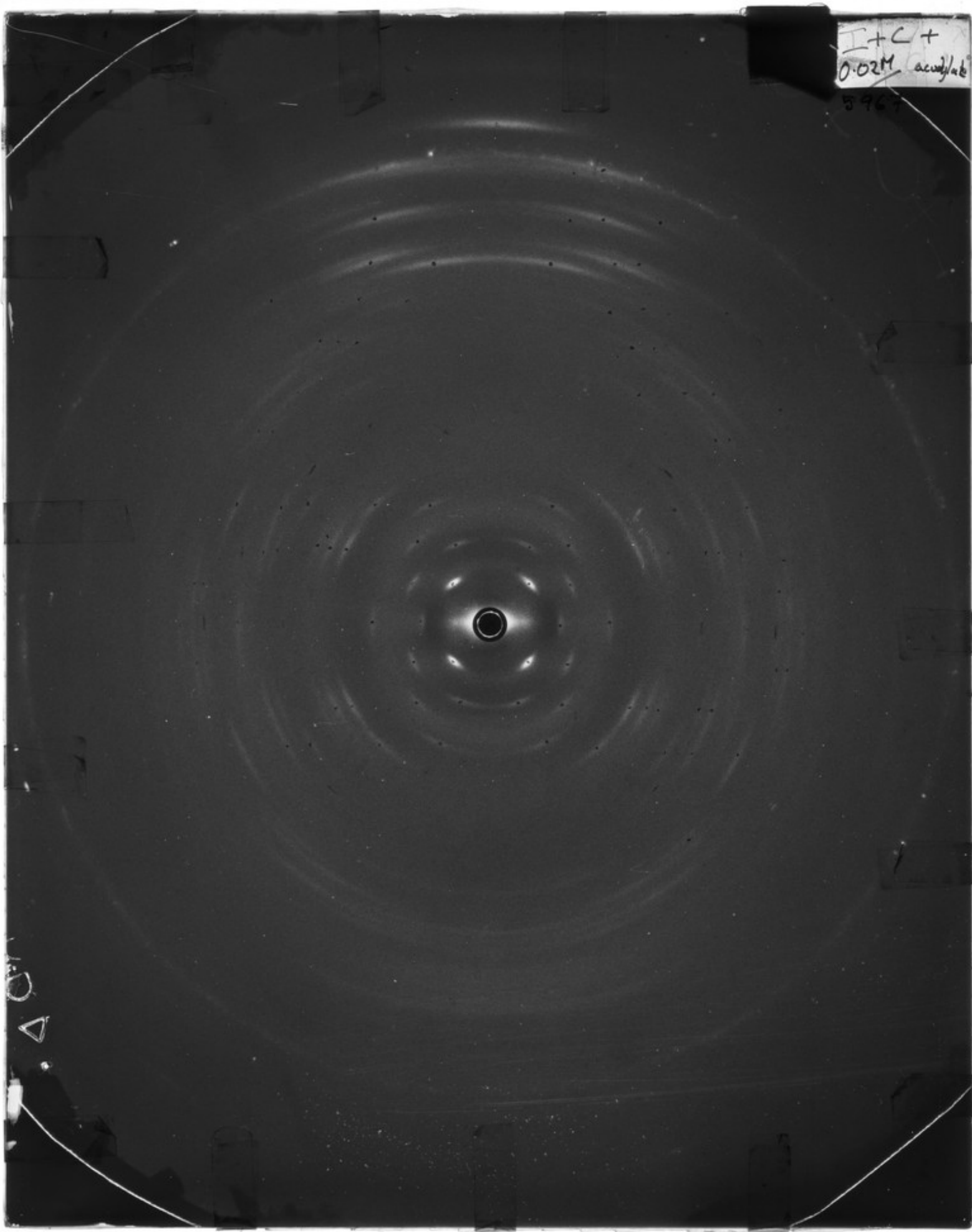


I + C +
0.02M acrylate
5967



△

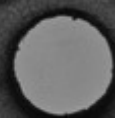
I+C+
0.02M acrylate
5967



AC
Δ

315a

X 11.25



270a

270a

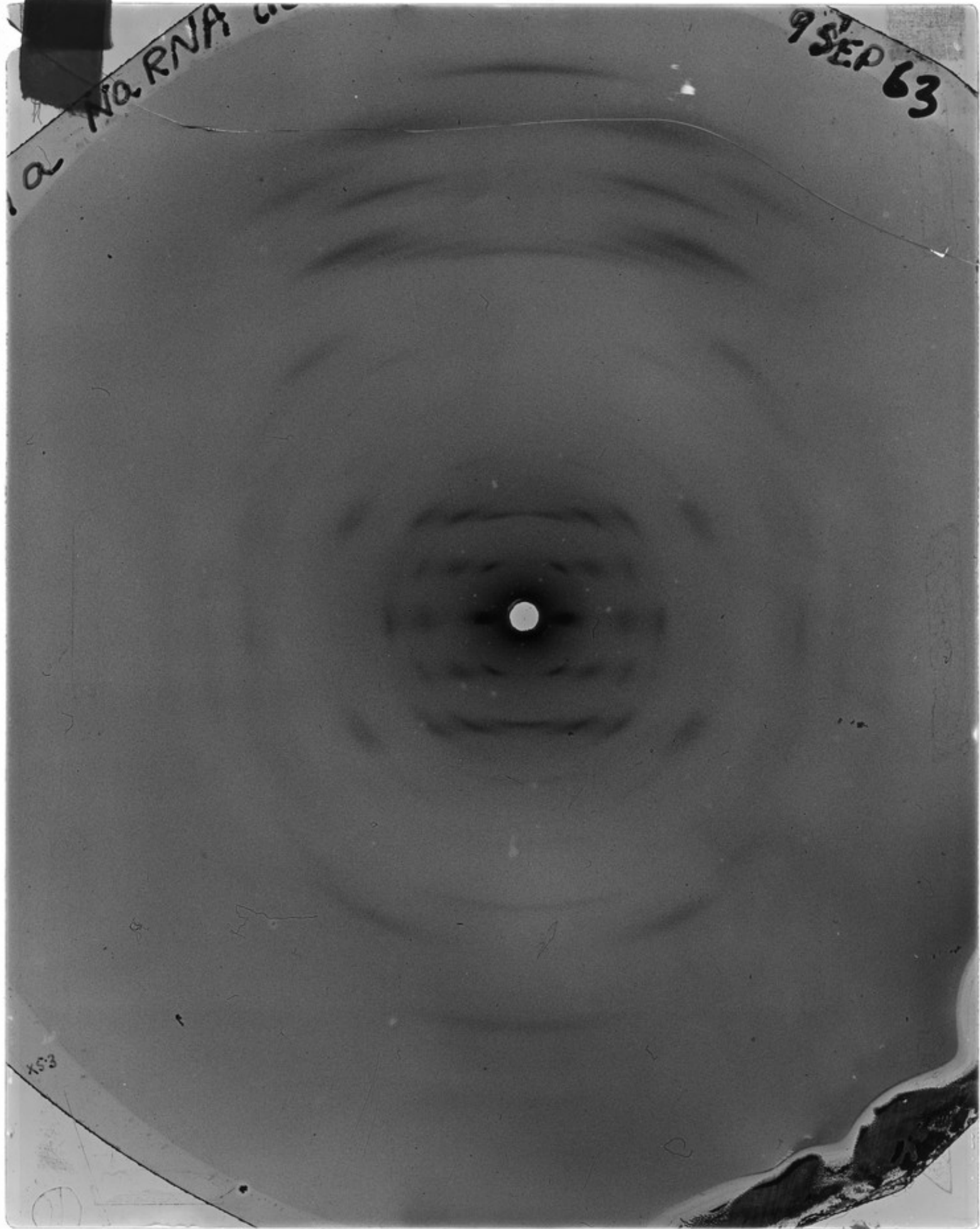
287 x/2





12 NO RNA

9 SEP 63



153