

X-ray diffraction exposure and graphs relating to RNA research carried out by Watson Fuller referenced as 'Dr Fuller'

Contributors

Fuller, Watson, b.1935

Publication/Creation

February 1968

Persistent URL

<https://wellcomecollection.org/works/h6hybct6>

License and attribution

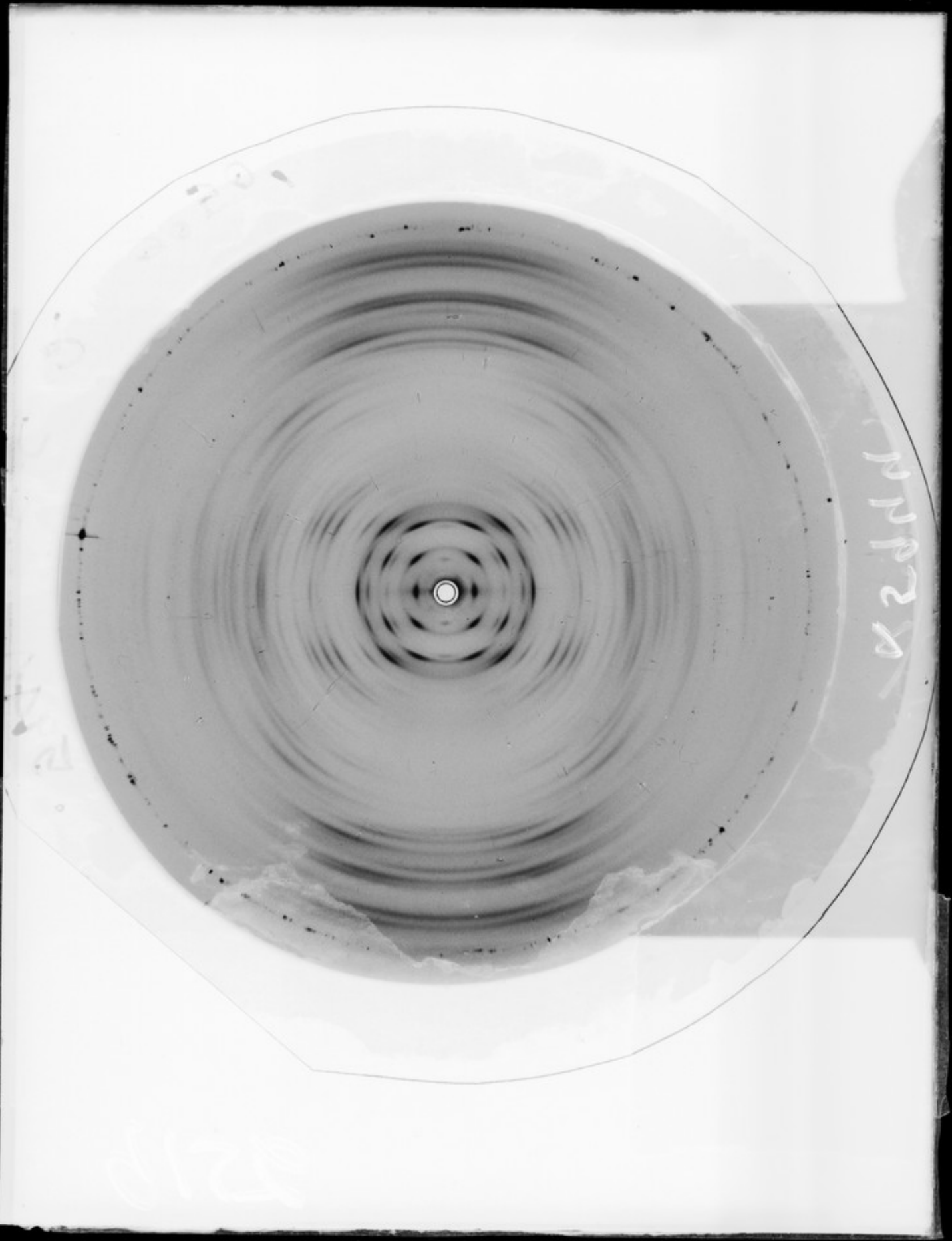
You have permission to make copies of this work under a Creative Commons, Attribution, Non-commercial license.

Non-commercial use includes private study, academic research, teaching, and other activities that are not primarily intended for, or directed towards, commercial advantage or private monetary compensation. See the Legal Code for further information.

Image source should be attributed as specified in the full catalogue record. If no source is given the image should be attributed to Wellcome Collection.



Wellcome Collection
183 Euston Road
London NW1 2BE UK
T +44 (0)20 7611 8722
E library@wellcomecollection.org
<https://wellcomecollection.org>



p p p p

210

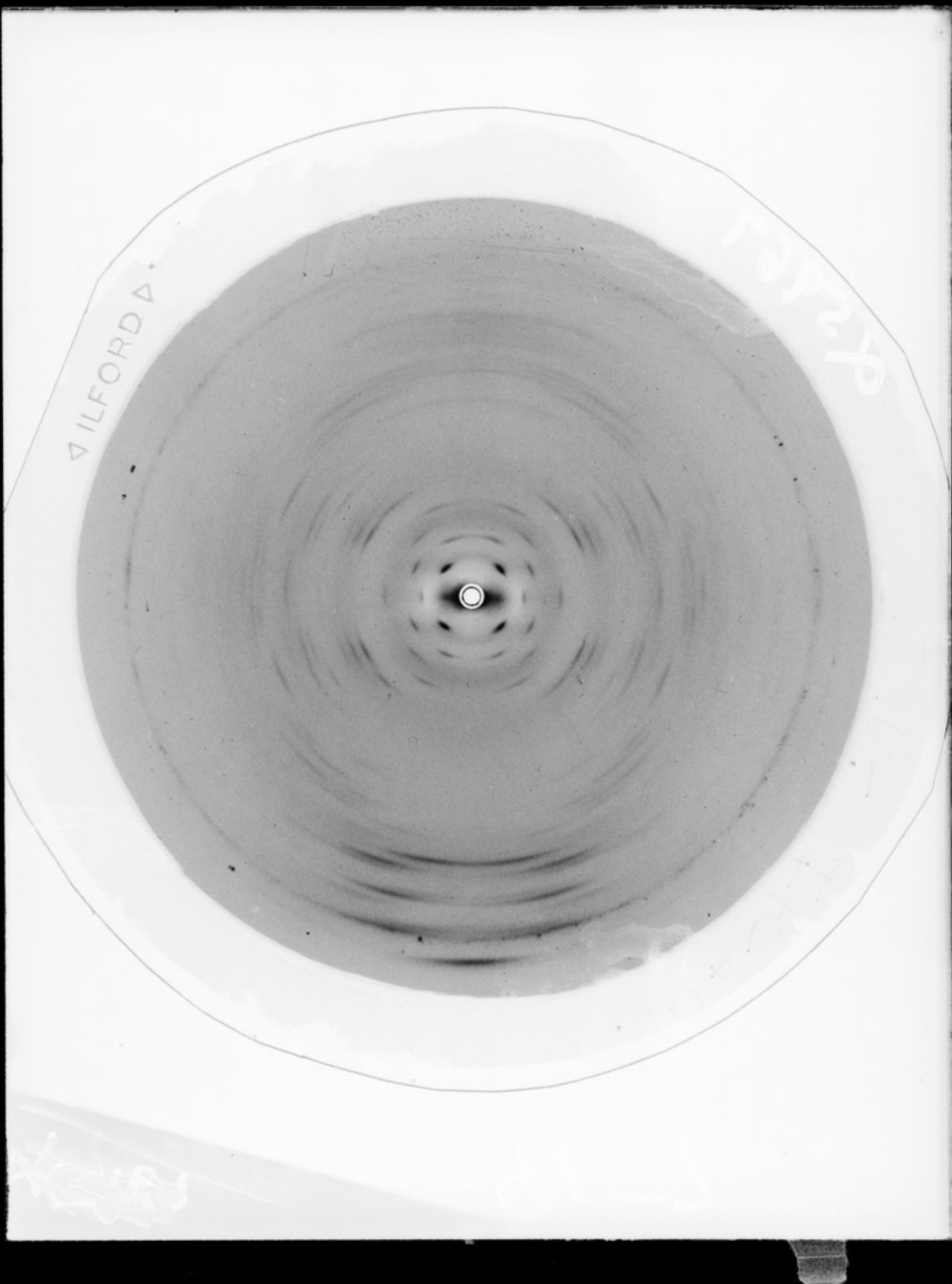
ILFORD

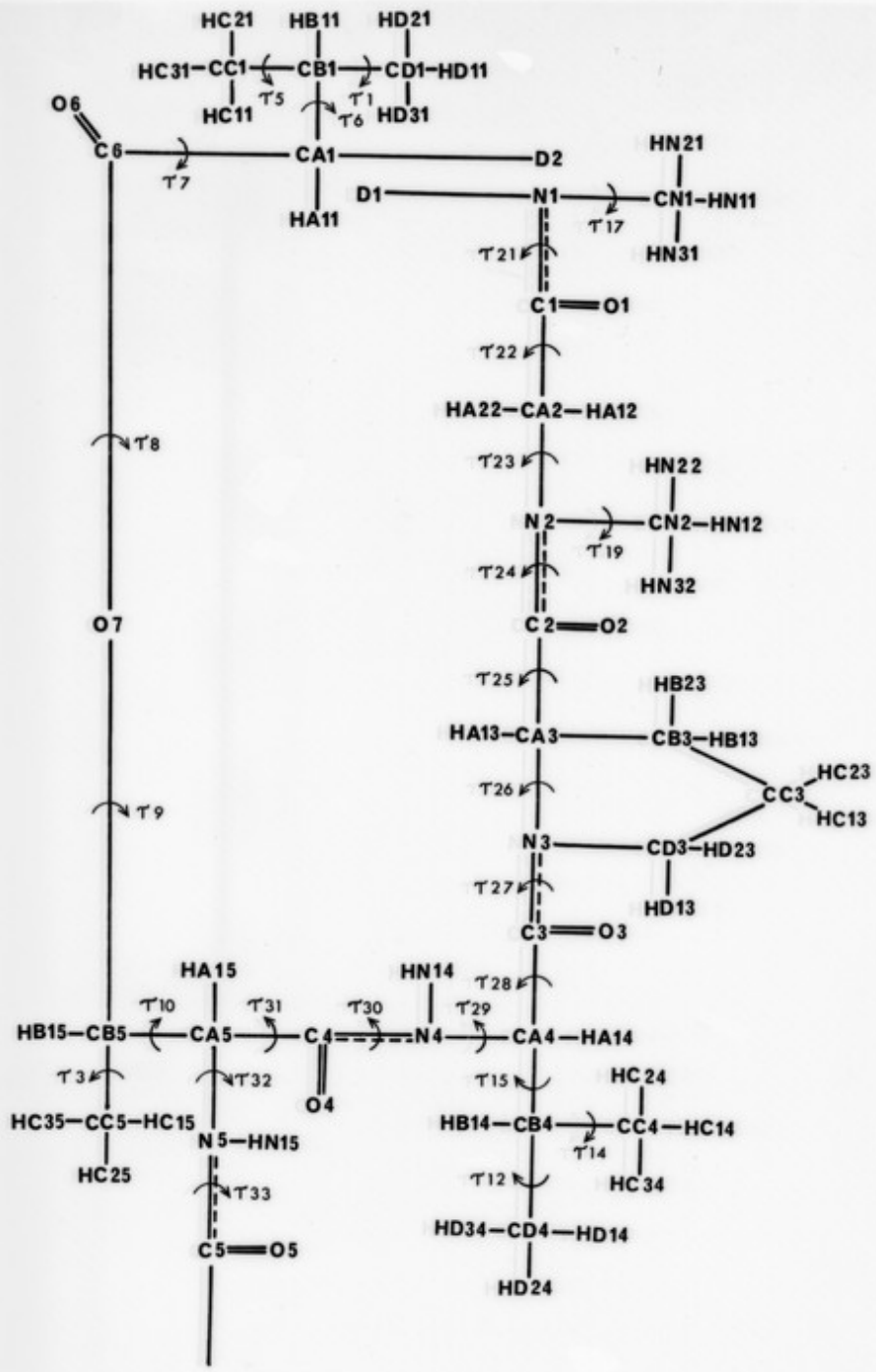
100

100

100

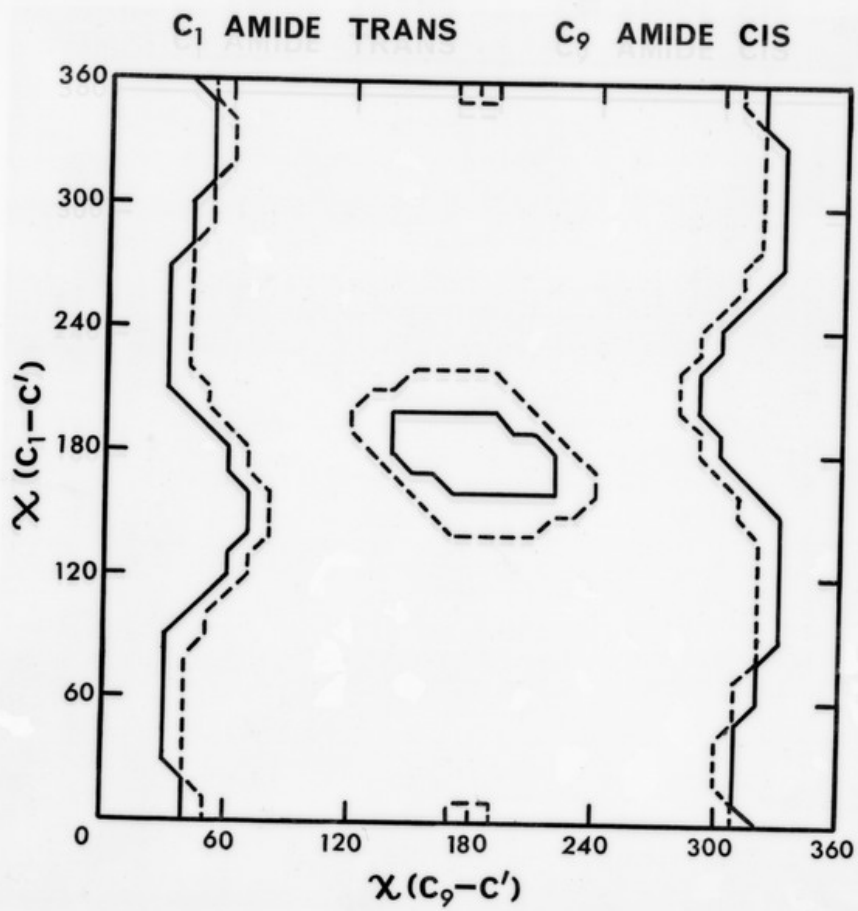
100



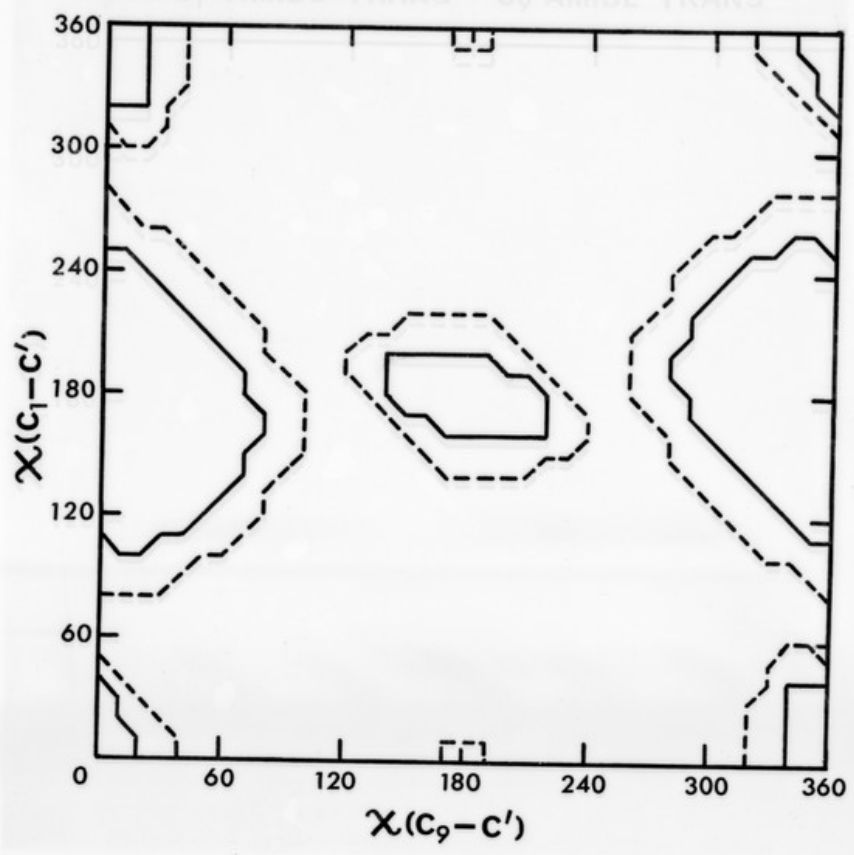


Dr. W. Fuller

1/1/53

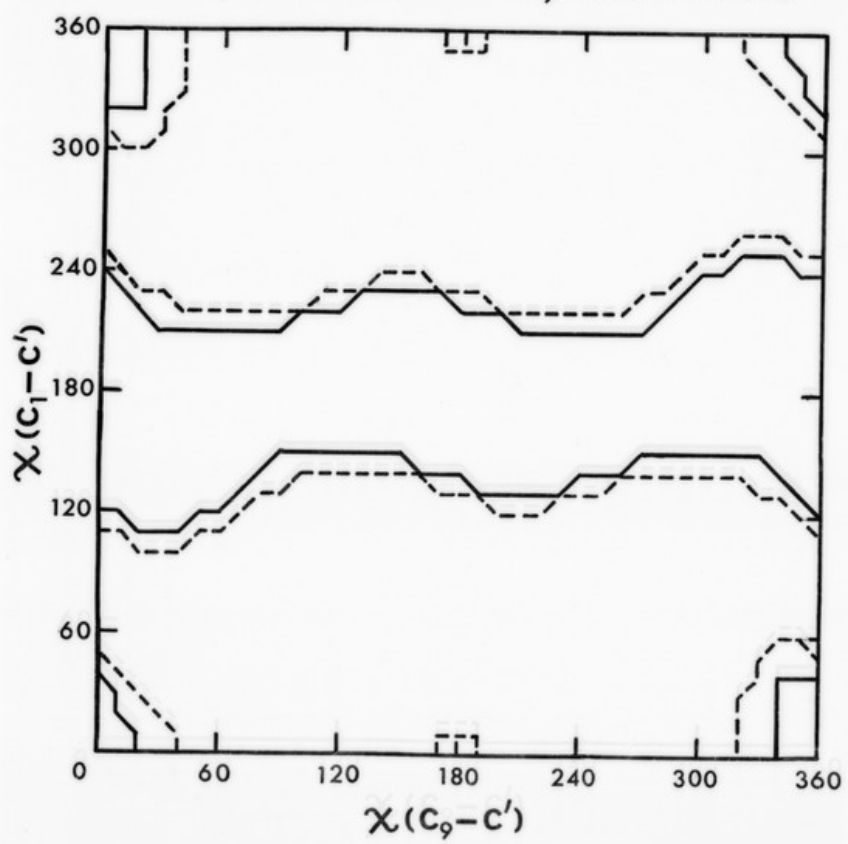


C₁ AMIDE TRANS C₉ AMIDE TRANS



C₁ AMIDE CIS

C₉ AMIDE TRANS



C₁ AMIDE CIS C₉ AMIDE CIS

