

X-ray diffraction exposures of Poly A-U (a double helical polyribonucleotide). Originally referenced as 'Dr Fuller'

Contributors

Fuller, Watson, b.1935

Publication/Creation

February 1968

Persistent URL

<https://wellcomecollection.org/works/ukycf4zj>

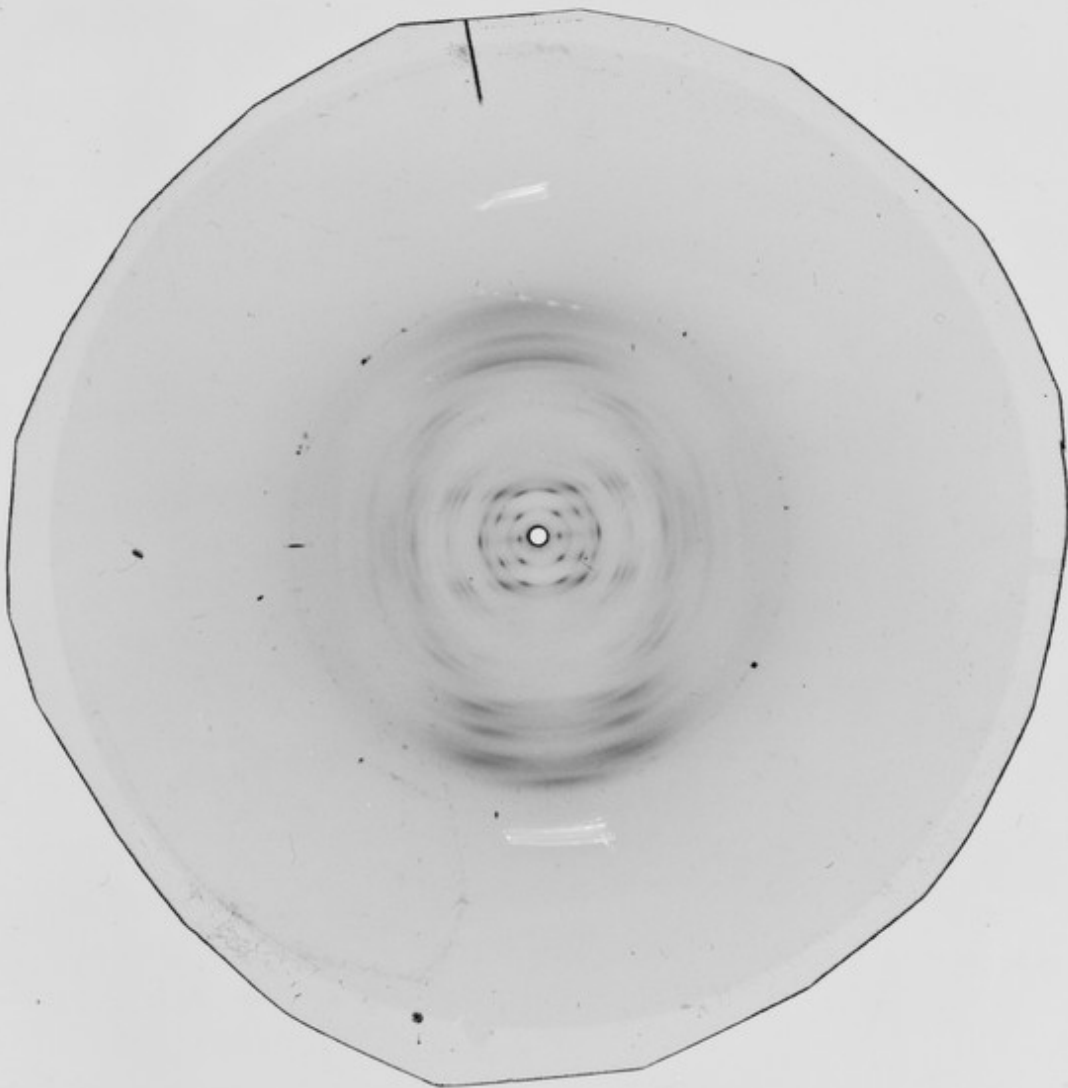
License and attribution

You have permission to make copies of this work under a Creative Commons, Attribution, Non-commercial license.

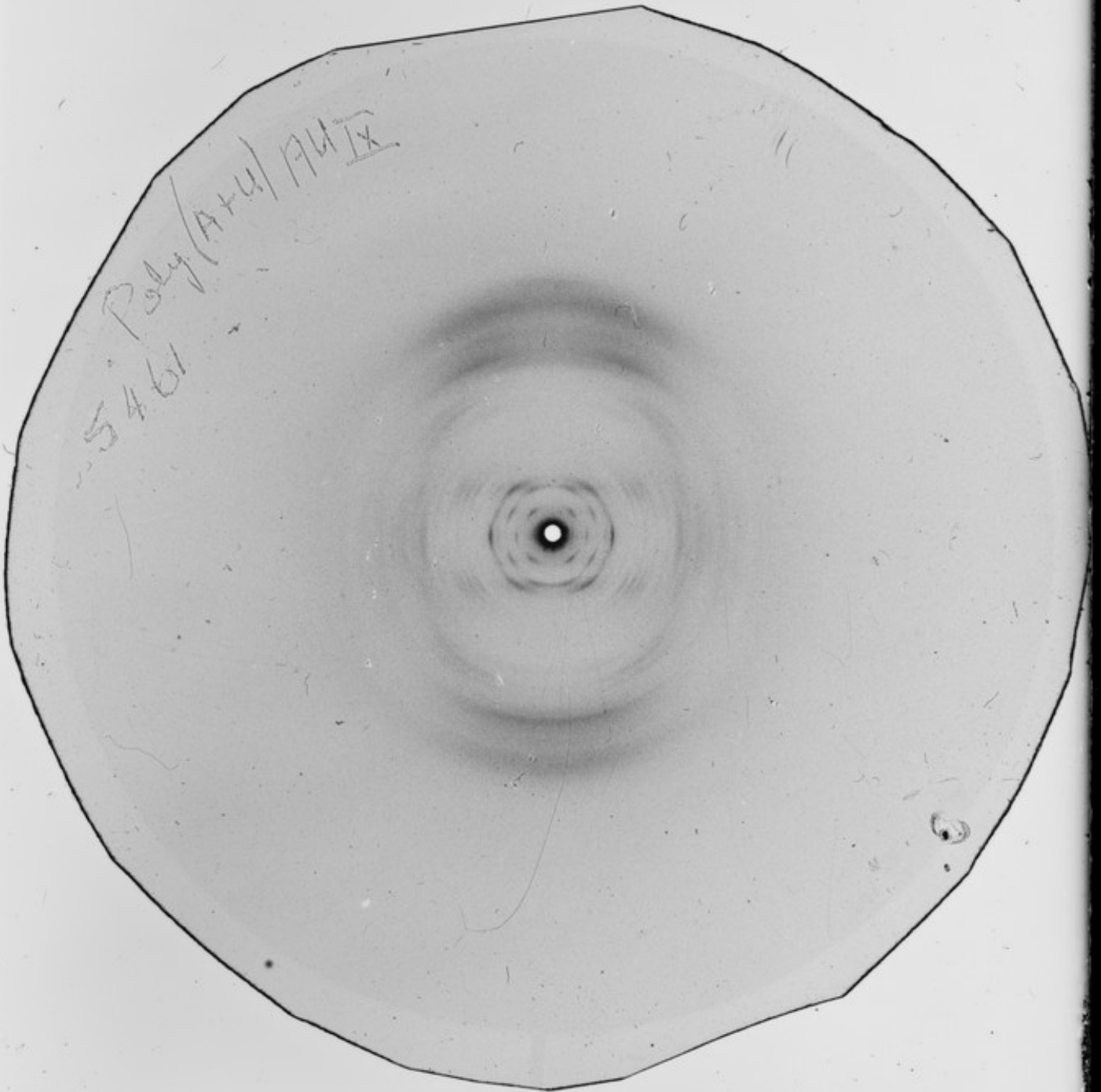
Non-commercial use includes private study, academic research, teaching, and other activities that are not primarily intended for, or directed towards, commercial advantage or private monetary compensation. See the Legal Code for further information.

Image source should be attributed as specified in the full catalogue record. If no source is given the image should be attributed to Wellcome Collection.

9119



9120



9121

