

## **Representations of the molecular and crystal structure of B-Poly-L-alanine referenced as 'Dr Arnott'**

### **Contributors**

Arnott, Struther, b.1934

### **Publication/Creation**

October 1967

### **Persistent URL**

<https://wellcomecollection.org/works/pyx8e5kd>

### **License and attribution**

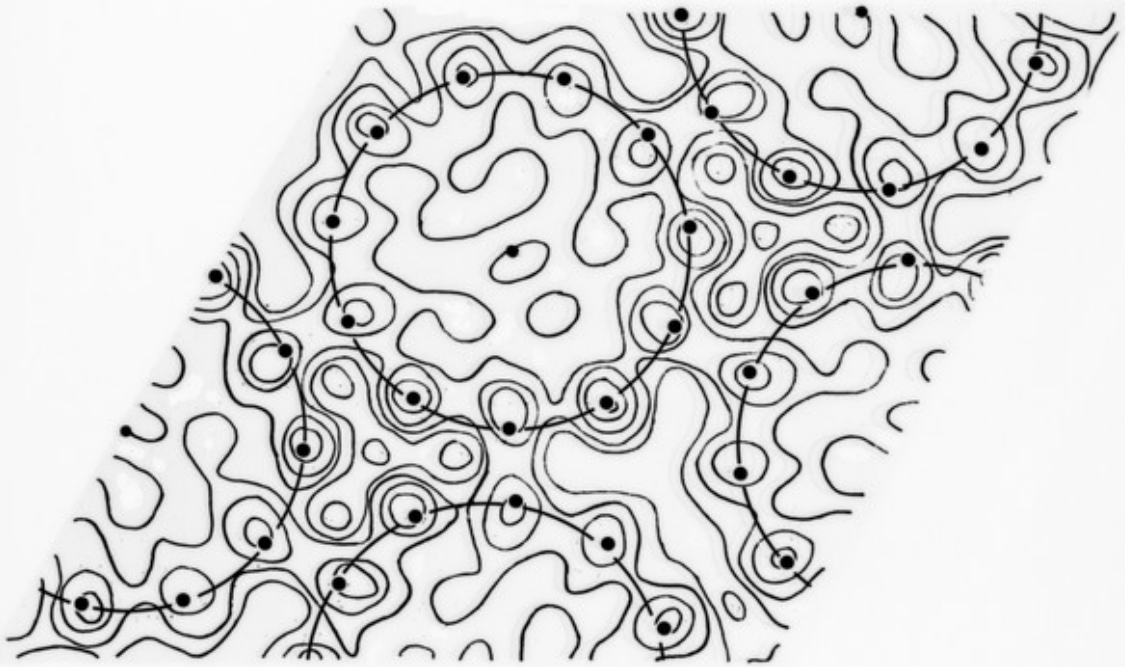
You have permission to make copies of this work under a Creative Commons, Attribution, Non-commercial license.

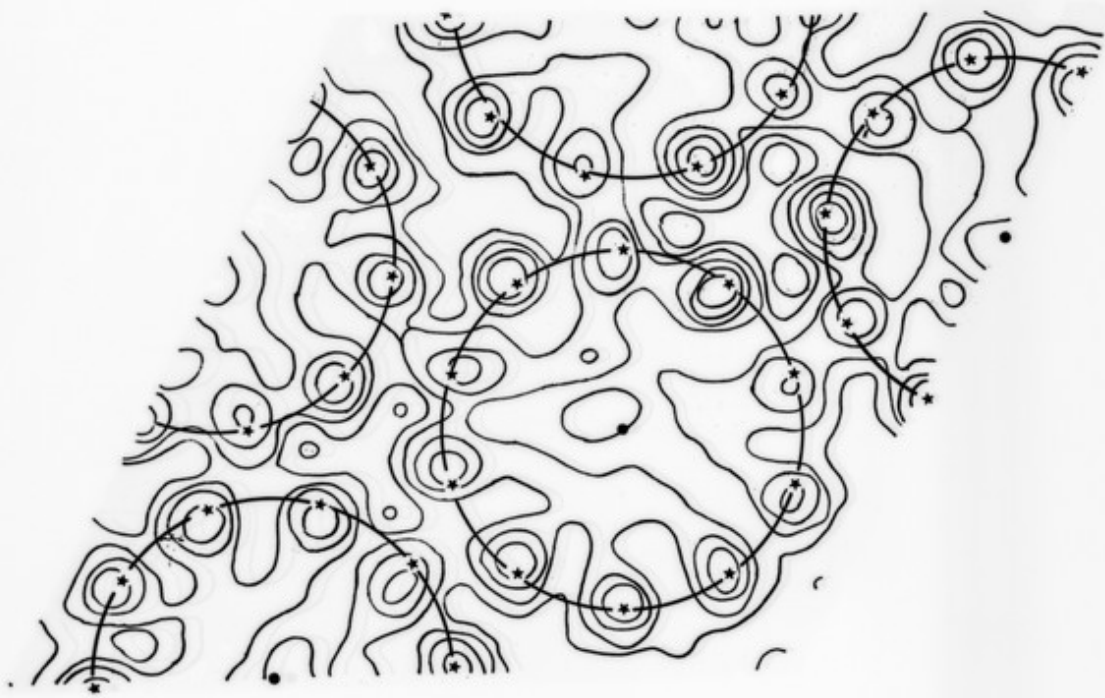
Non-commercial use includes private study, academic research, teaching, and other activities that are not primarily intended for, or directed towards, commercial advantage or private monetary compensation. See the Legal Code for further information.

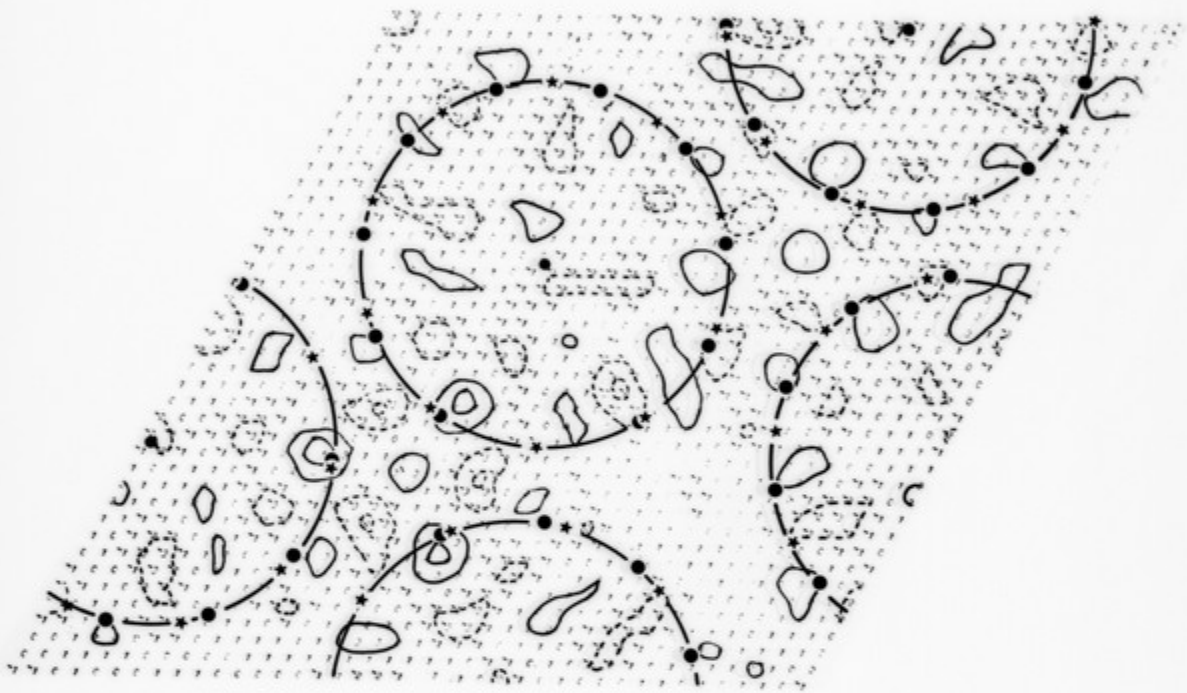
Image source should be attributed as specified in the full catalogue record. If no source is given the image should be attributed to Wellcome Collection.

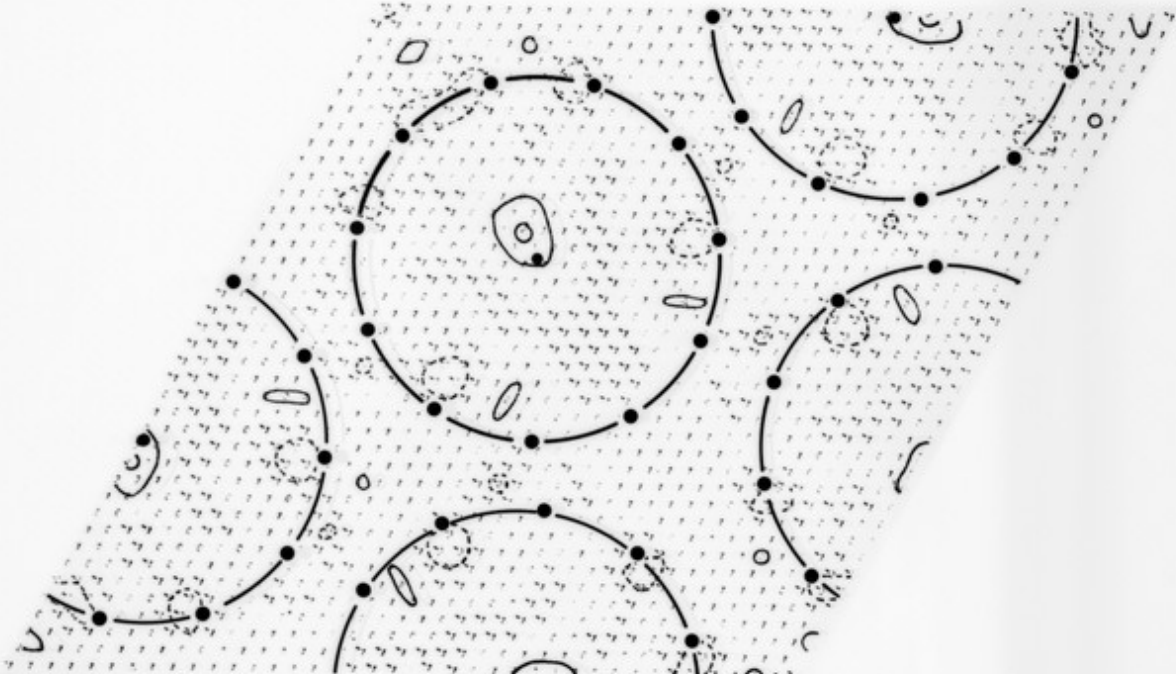


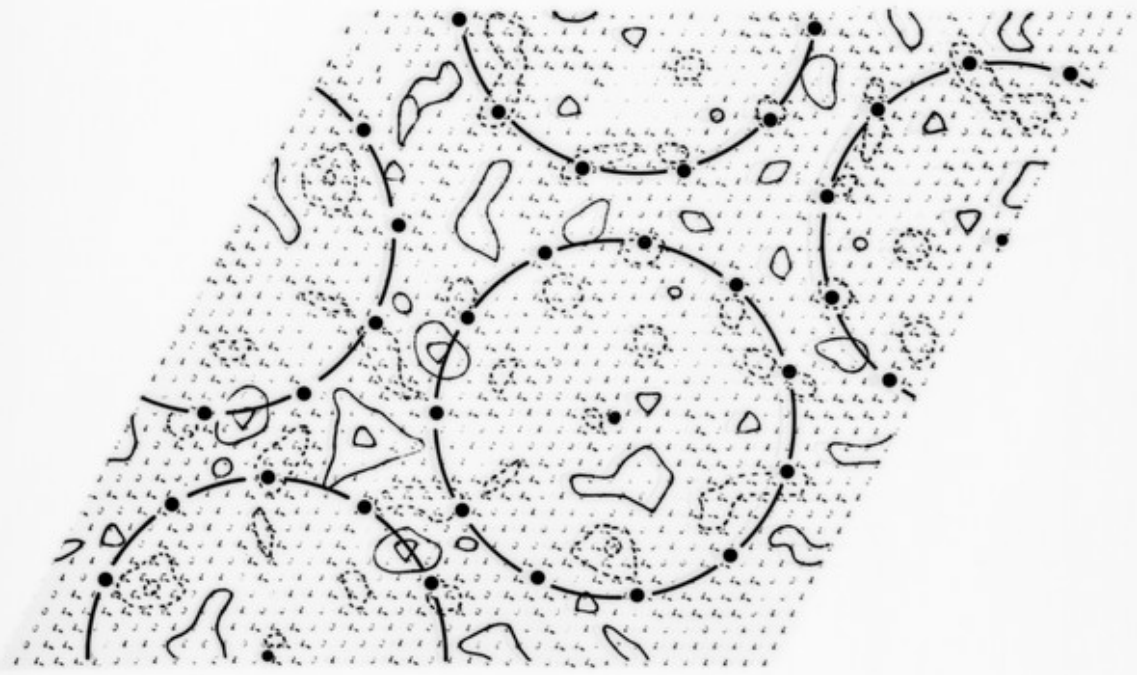
Wellcome Collection  
183 Euston Road  
London NW1 2BE UK  
T +44 (0)20 7611 8722  
E [library@wellcomecollection.org](mailto:library@wellcomecollection.org)  
<https://wellcomecollection.org>

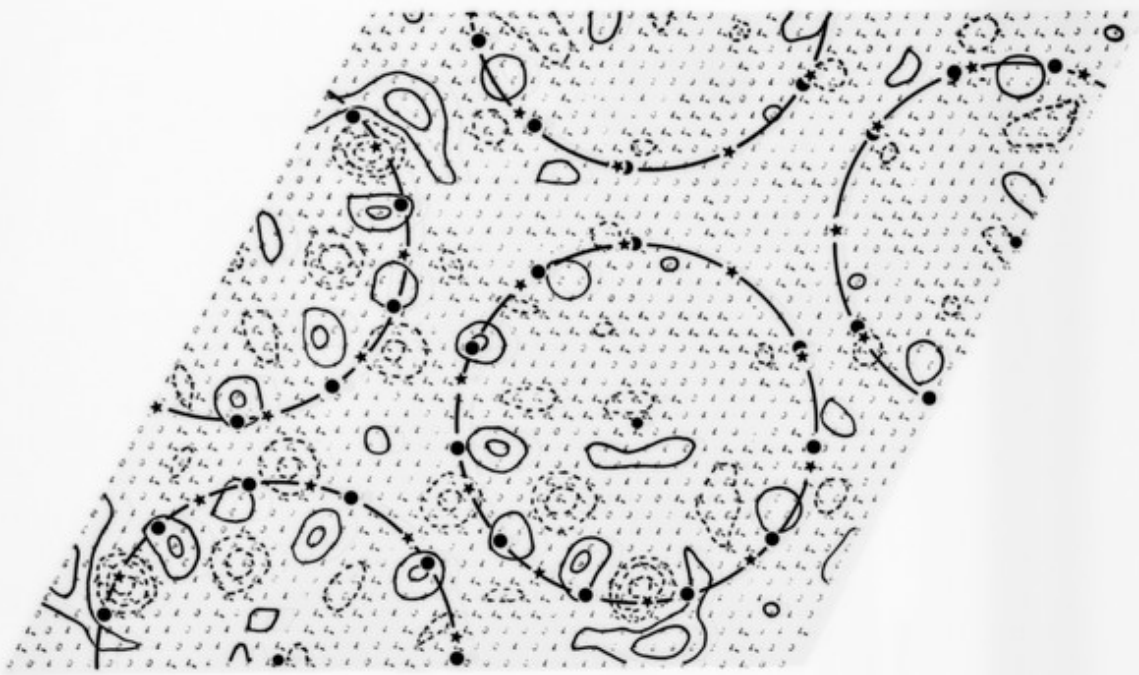




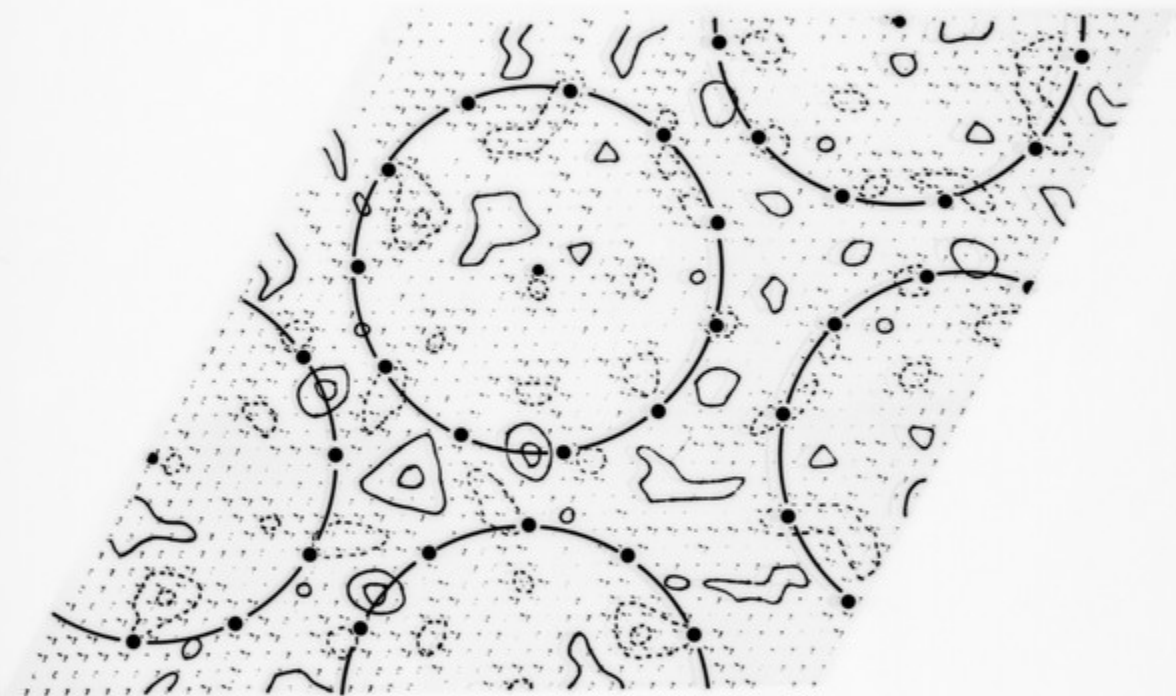




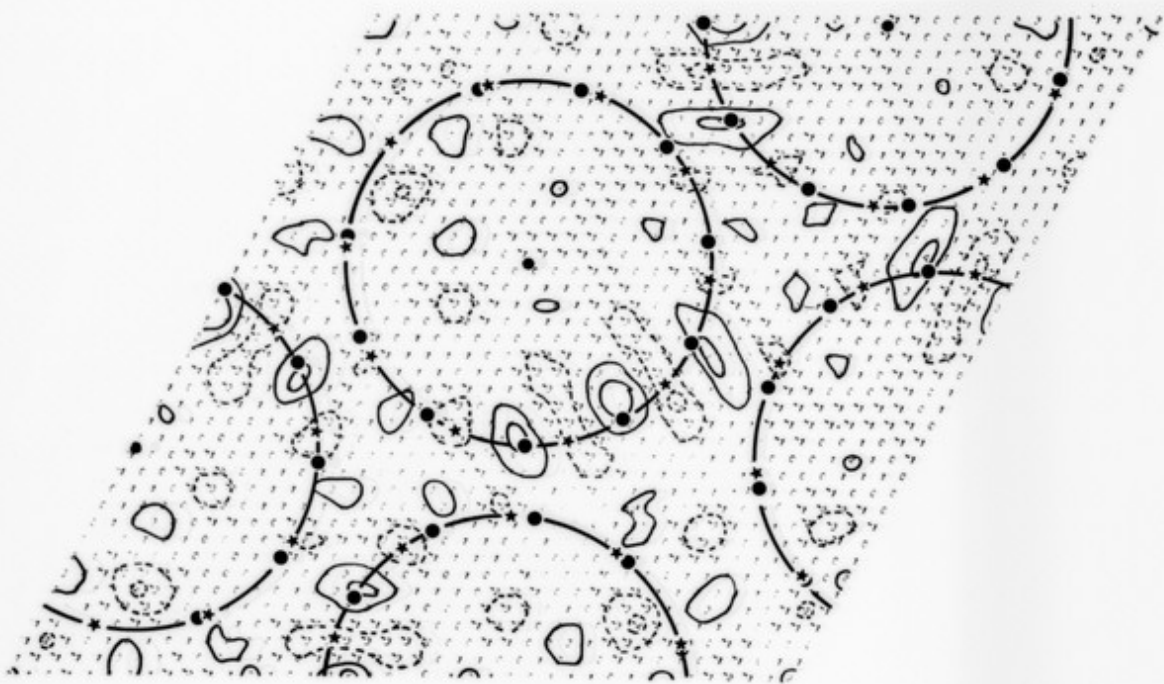


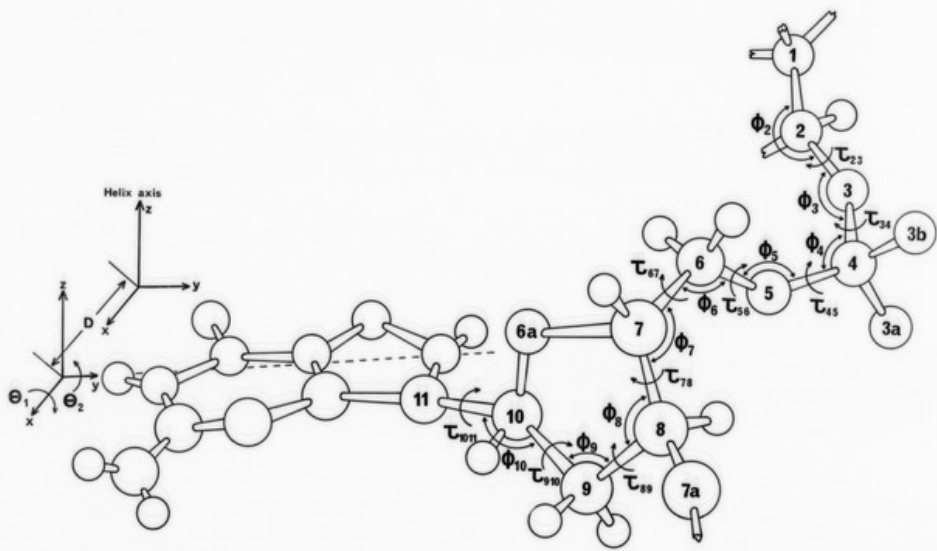


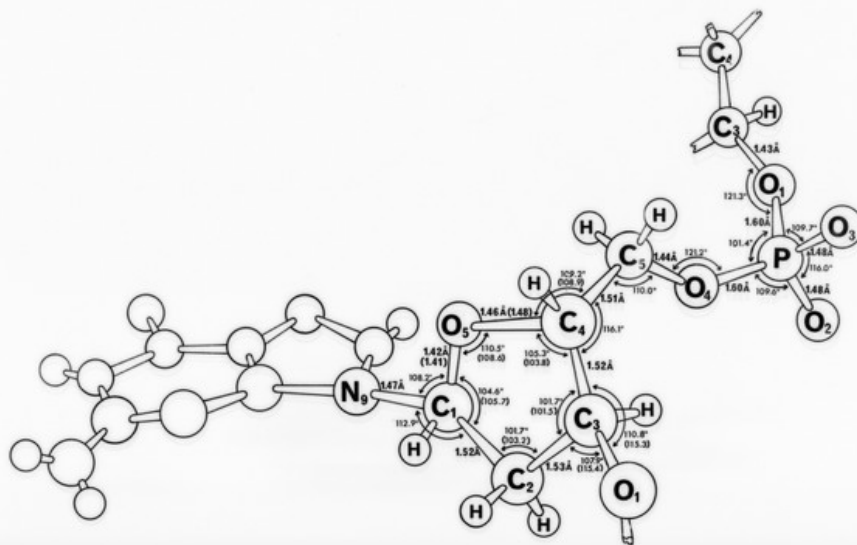
80





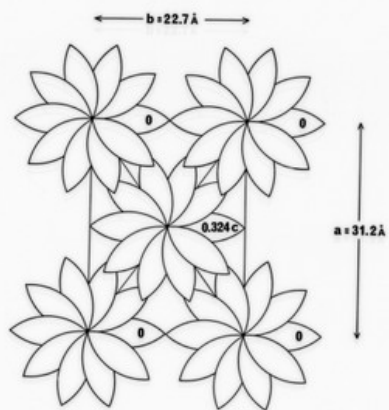
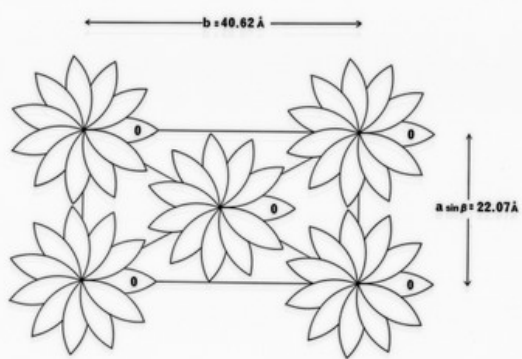




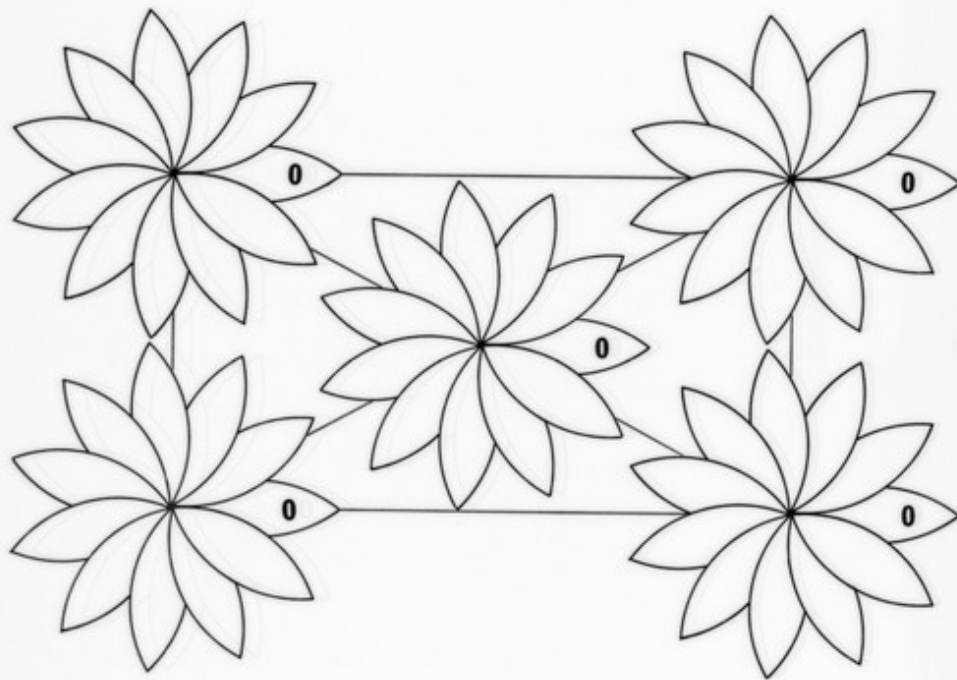






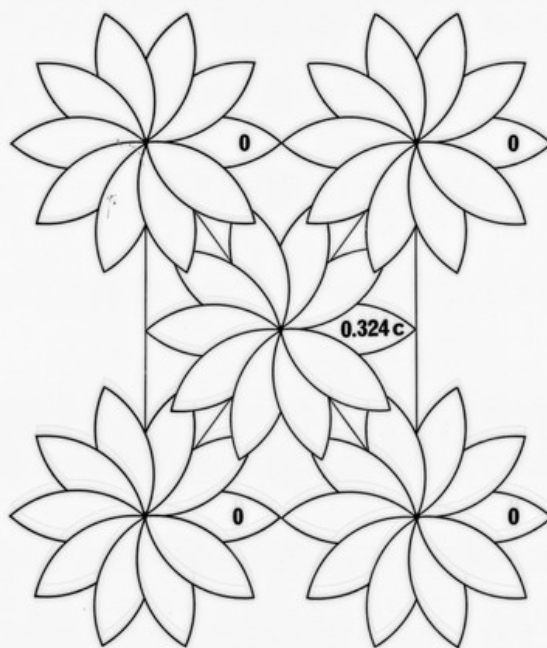


$b = 40.62 \text{ \AA}$



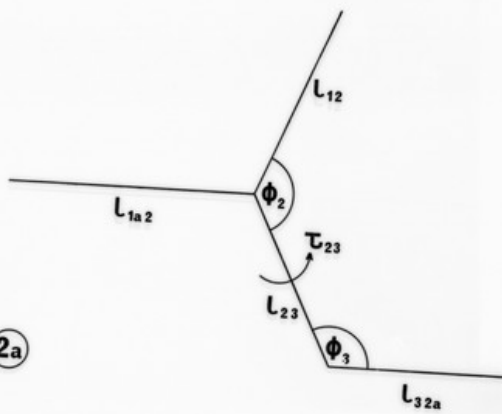
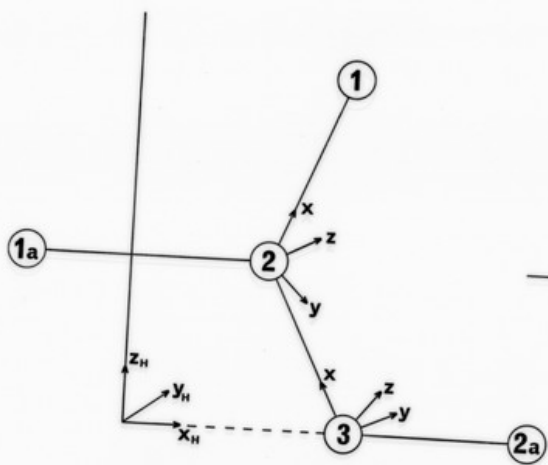
$a \sin \beta = 22.07 \text{ \AA}$

←  $b = 22.7 \text{ \AA}$  →

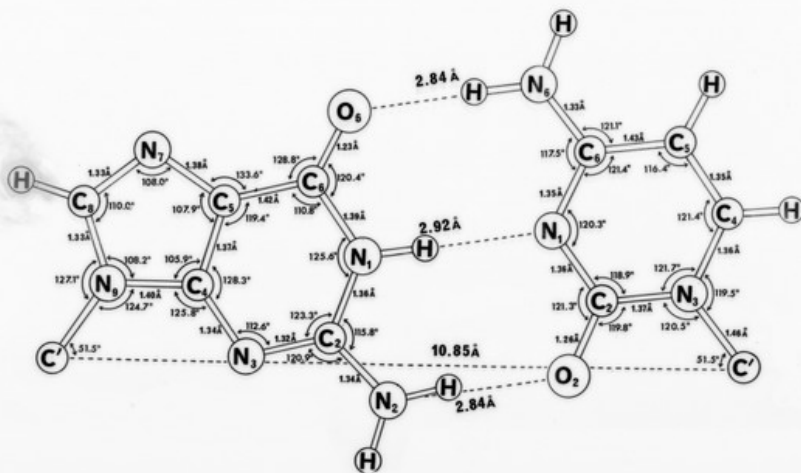
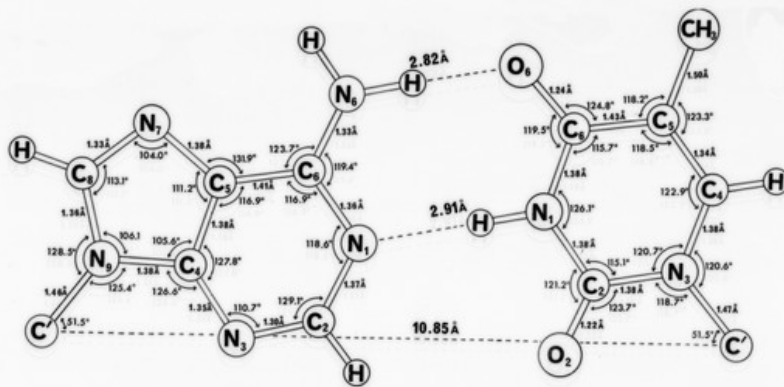


↑  
 $a = 31.2 \text{ \AA}$   
↓









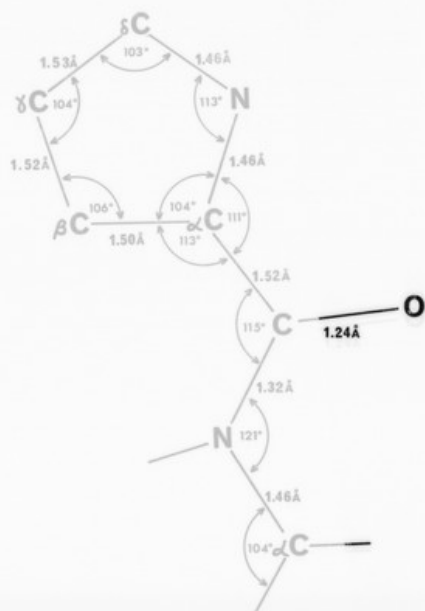
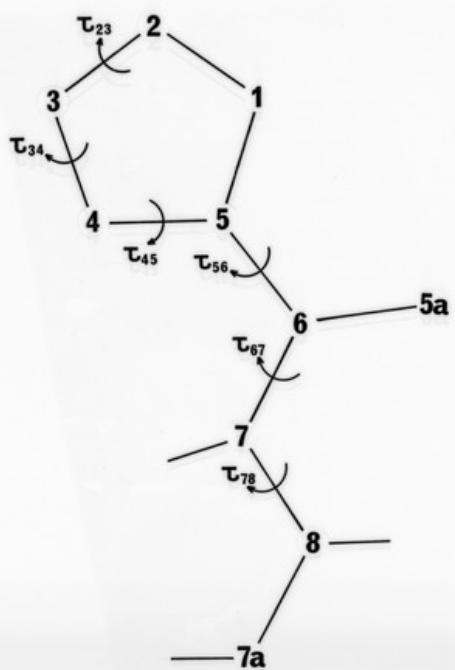
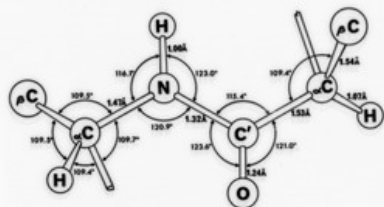
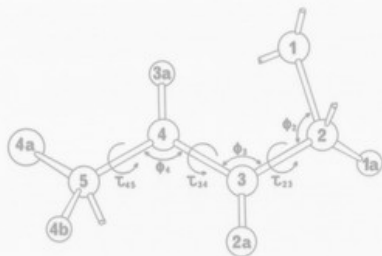


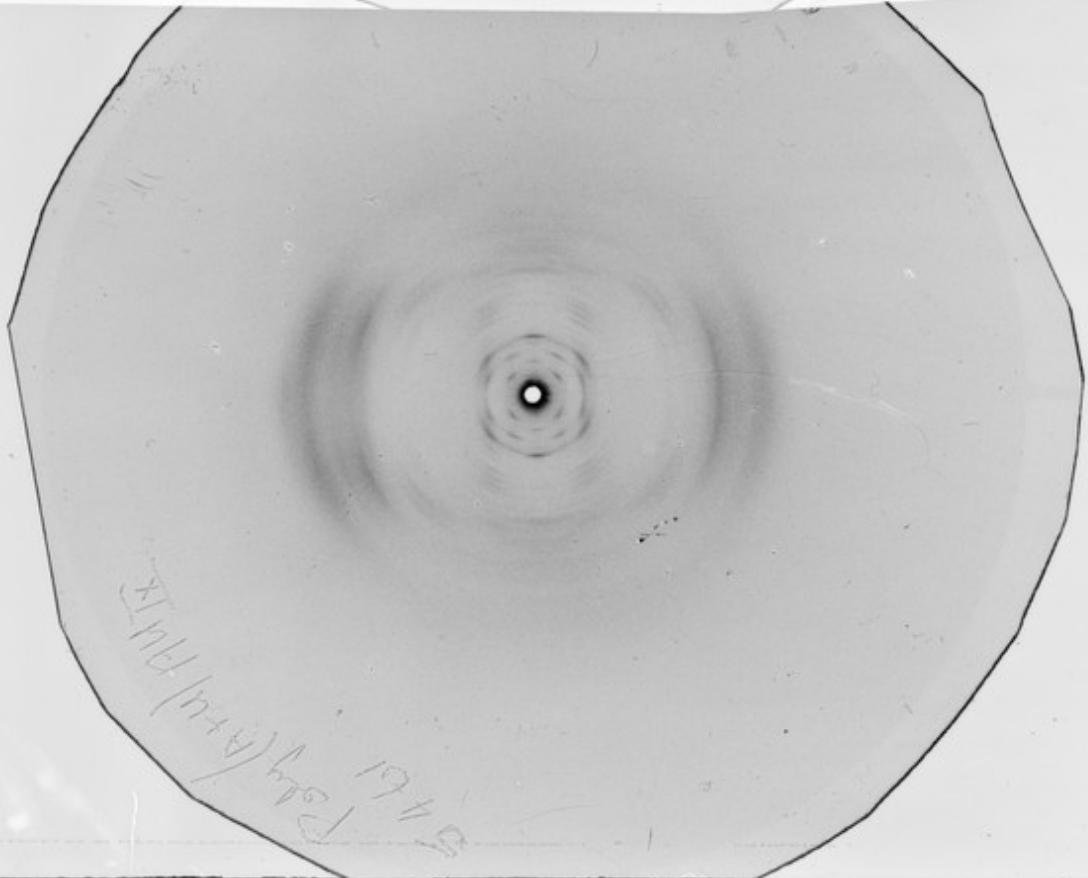
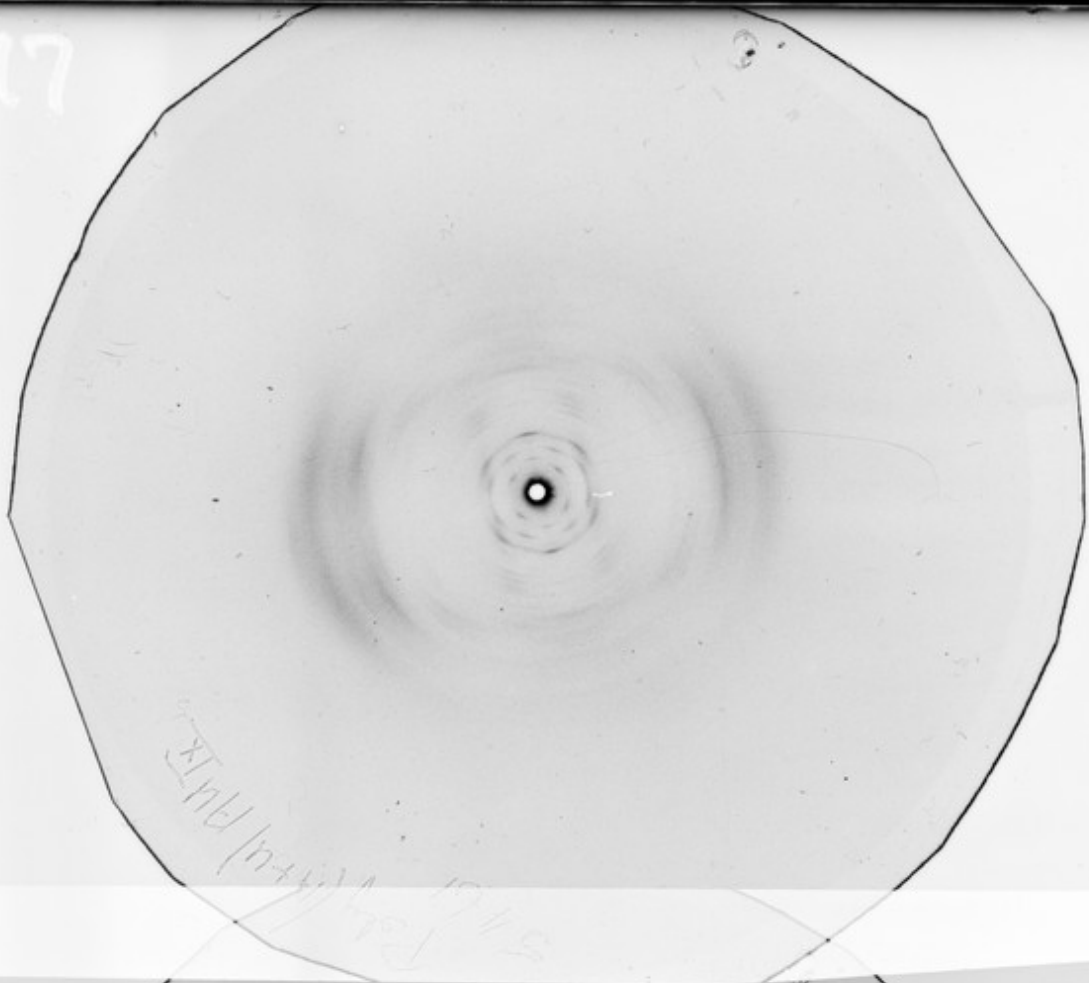
Table 1.

The refined crystal parameters of two poly-L-proline II models.

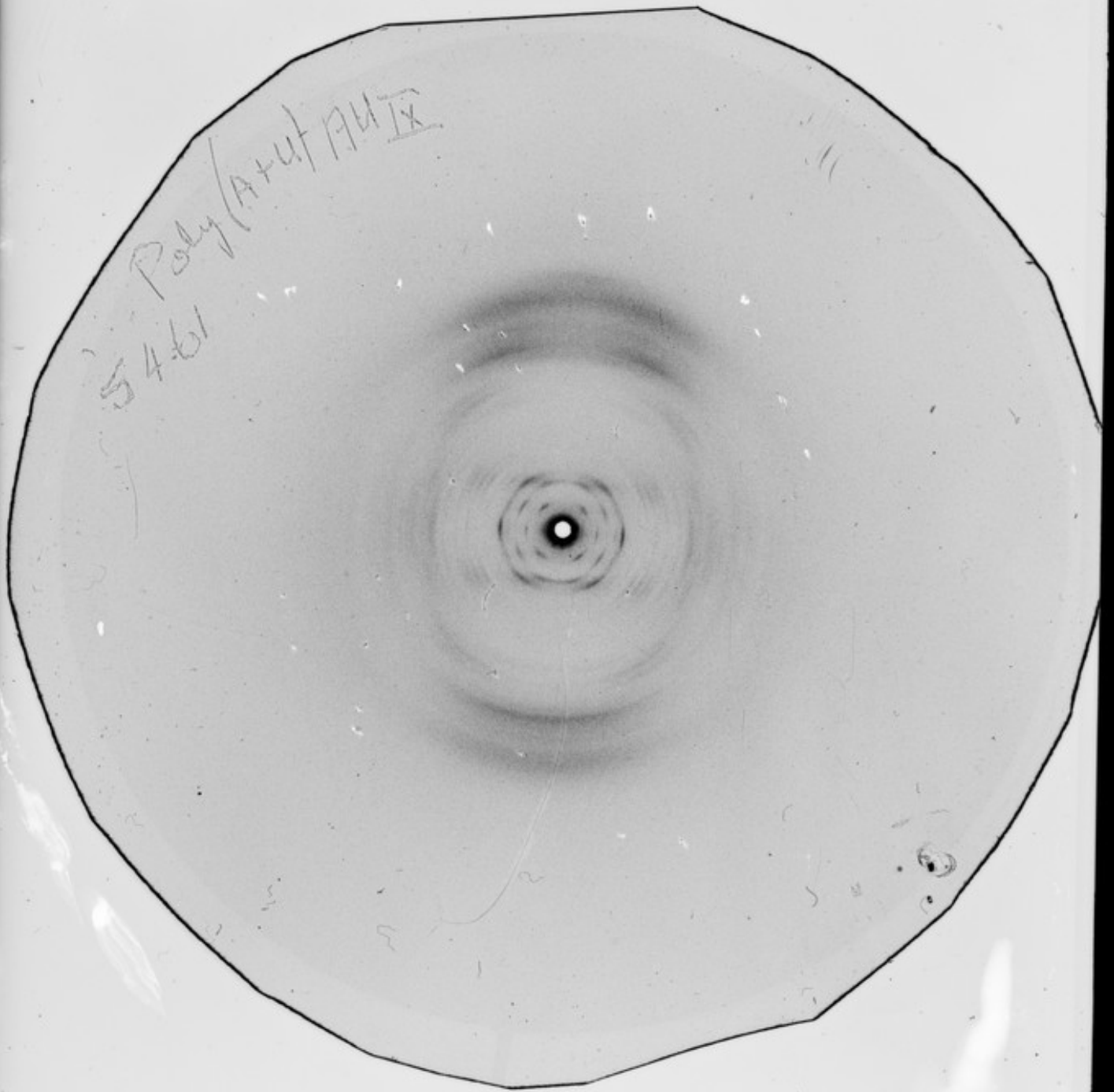
	Non-statistical	Statistical
$\tau_{23}$	<u>-23.8°</u>	<u>-23.8°</u>
$\tau_{34}$	<u>31.4°</u>	<u>31.4°</u>
$\tau_{45}$	<u>94.7°</u>	<u>94.7°</u>
$\tau_{56}$	95.1°	96.5°
$\tau_{67}$	180.4°	176.5°
$\tau_{78}$	200.2°	201.8°
$\theta_1$	1.0°	-1.7°
$\theta_2$	232.4°	231.2°
$\theta_3$	55.2°	54.5°
D	1.244 Å	1.243 Å
$\psi$	42.4°	11.7°
ROT	—	-65°
TRANS	—	-6.925 Å
K	2.400	2.413
B	5.10 Å <sup>2</sup>	0.837 Å <sup>2</sup>



8817



171  
171

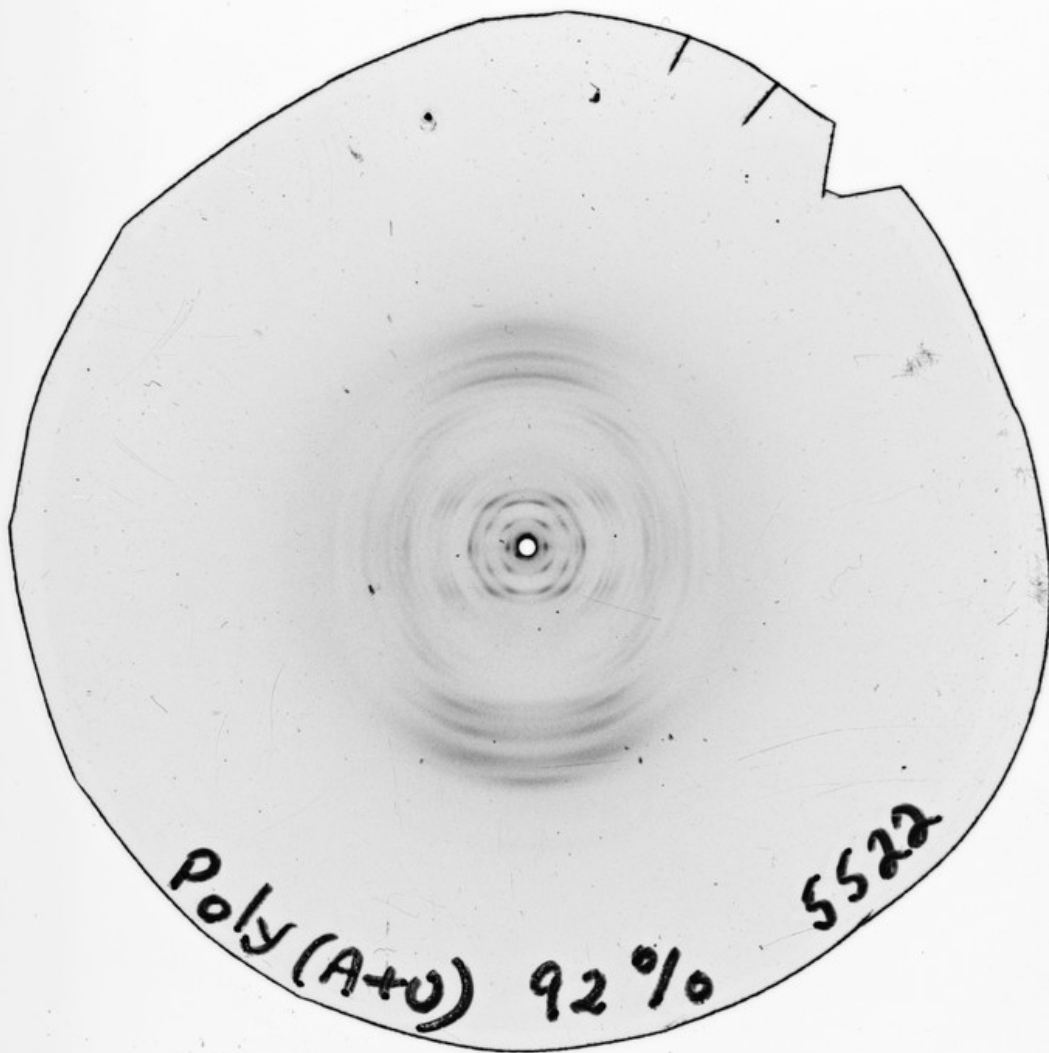


Poly (A+4) AUIX

5461

8817

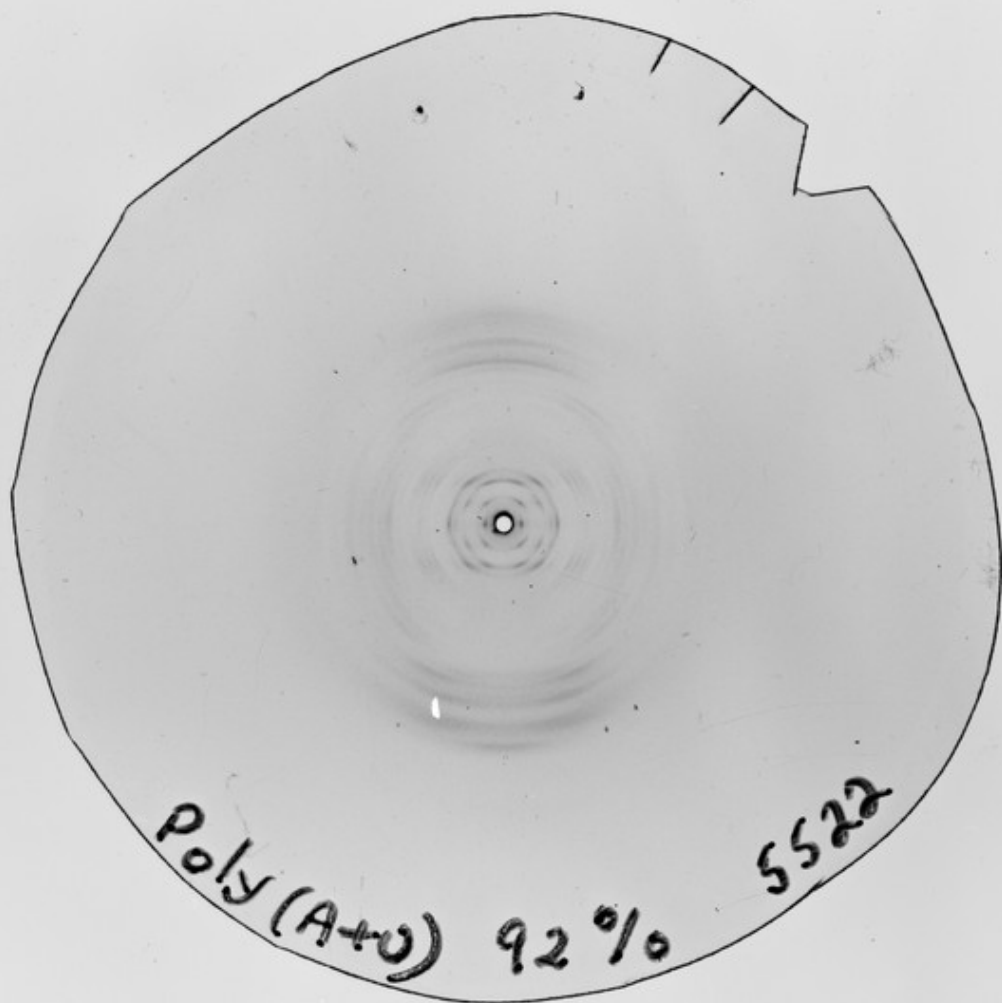




Poly(A+U) 92%

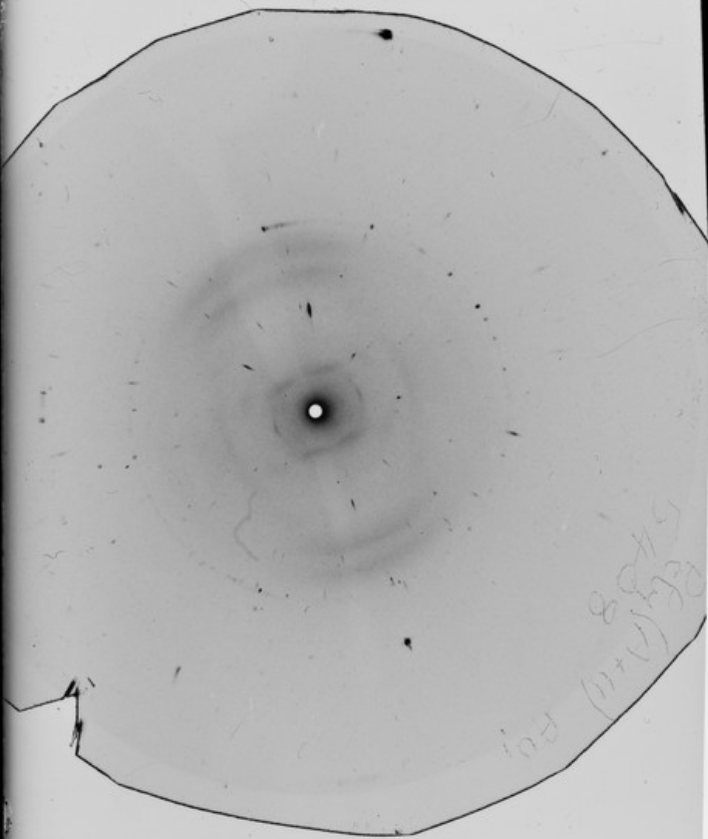
5522

P.P.P.

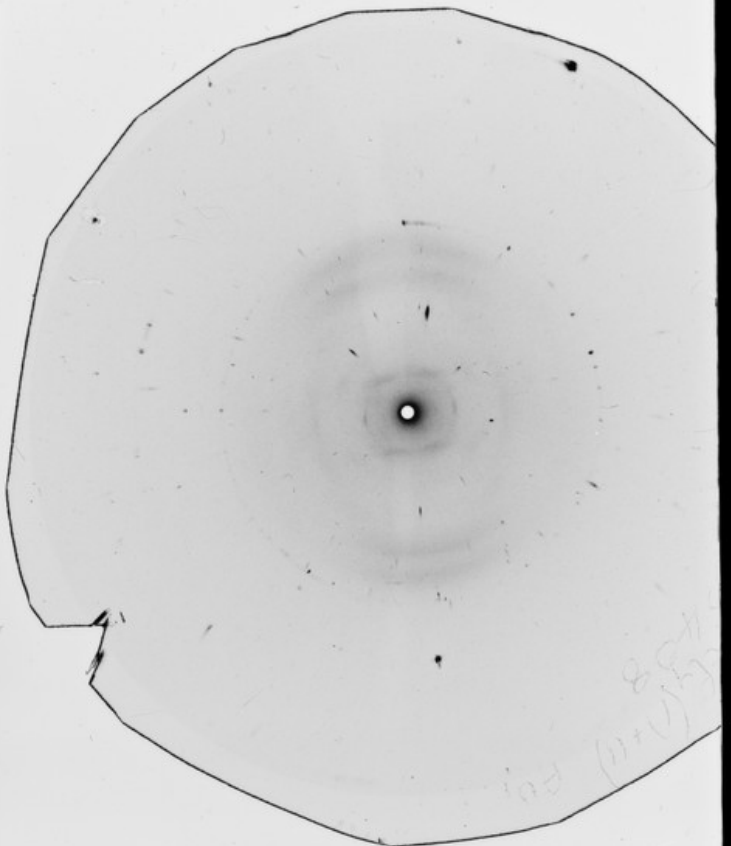


8188

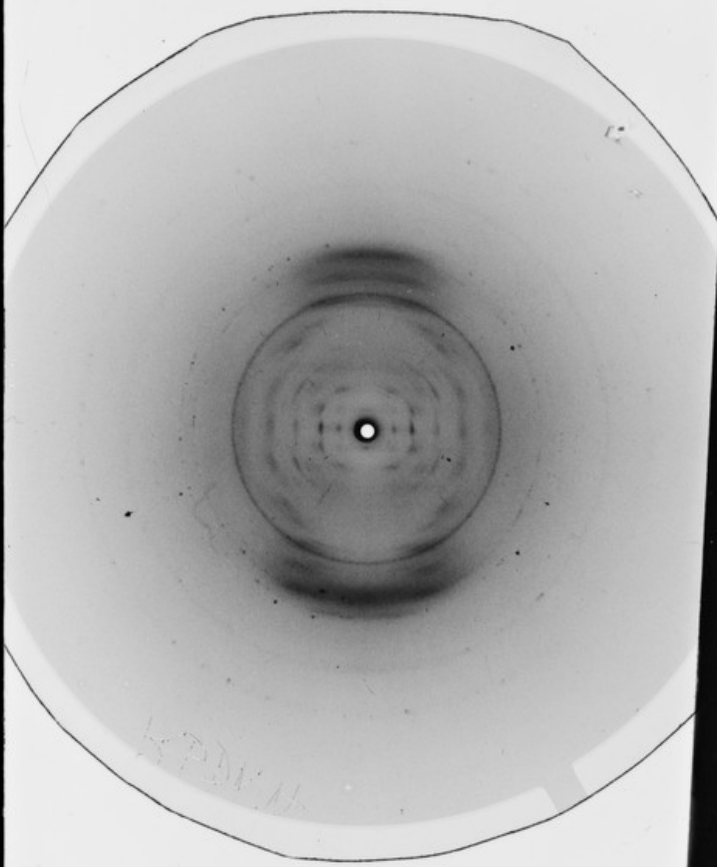
P188



I VA



Rb DNA



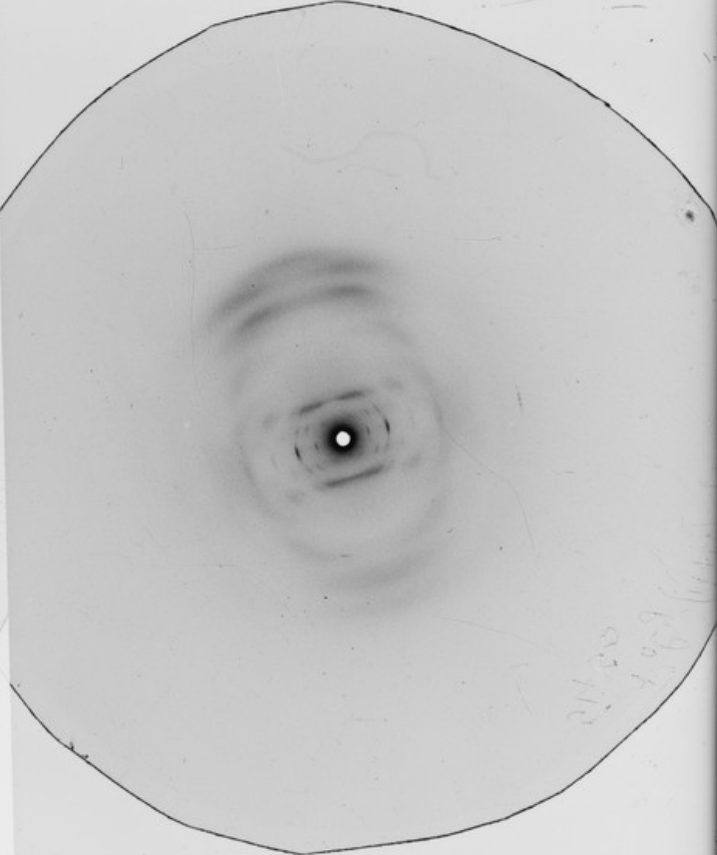
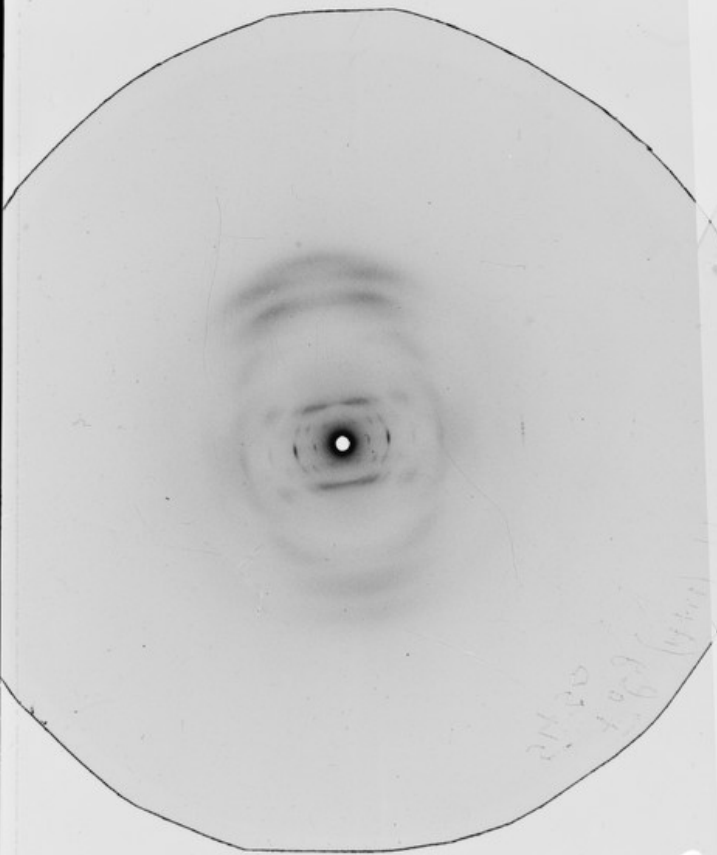
Rb DNA

8820



Rb DNA

AV VI.

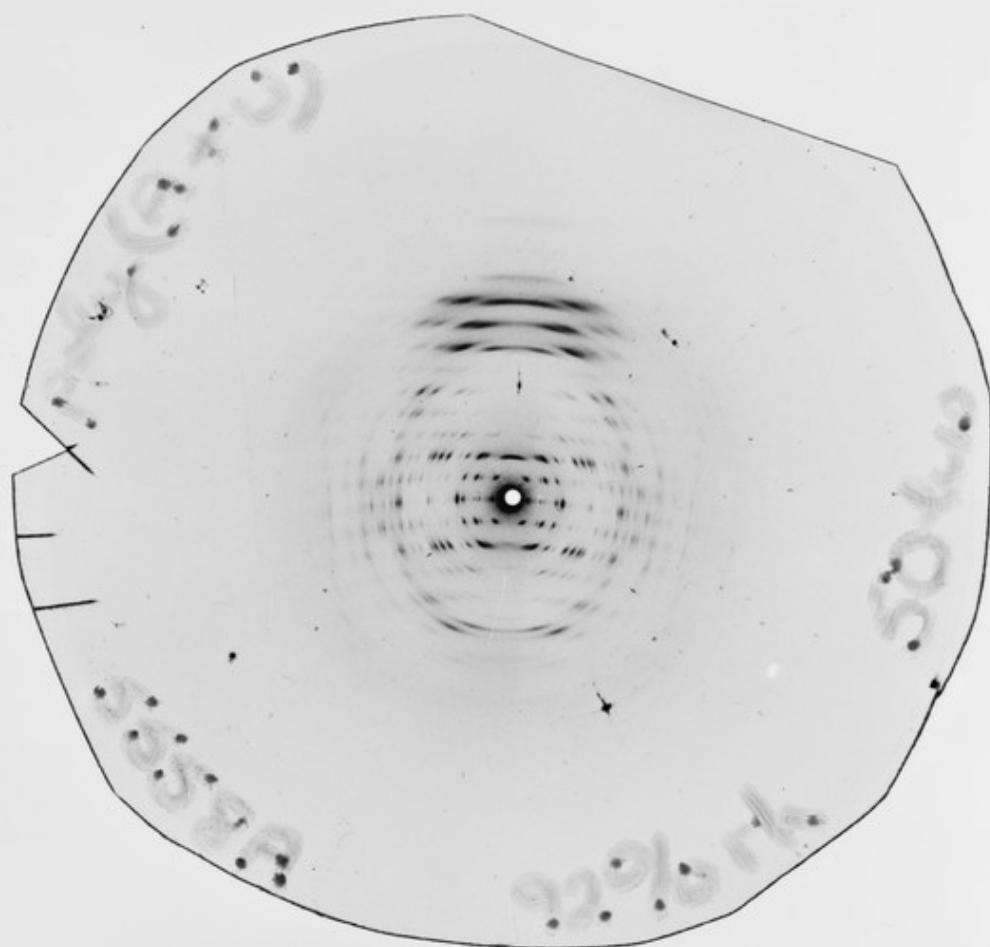


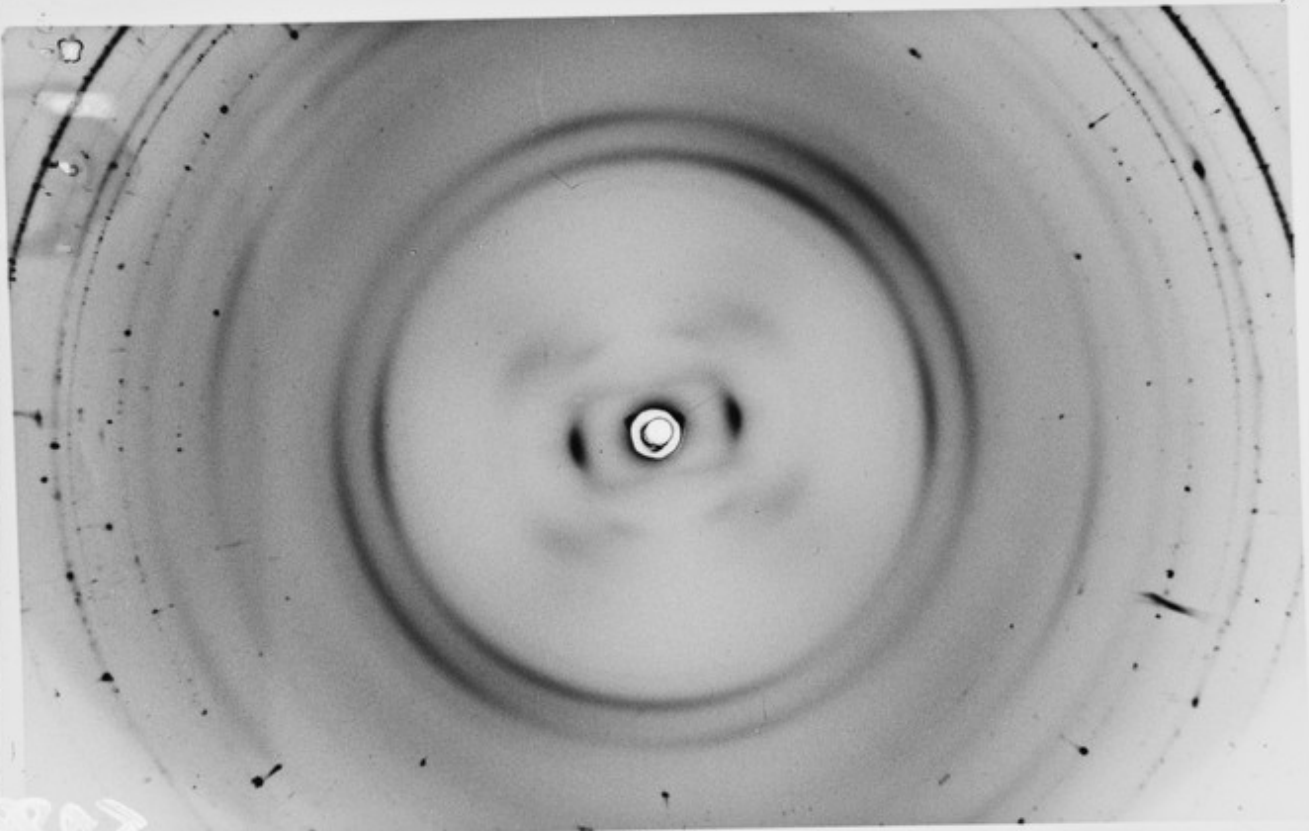
1288

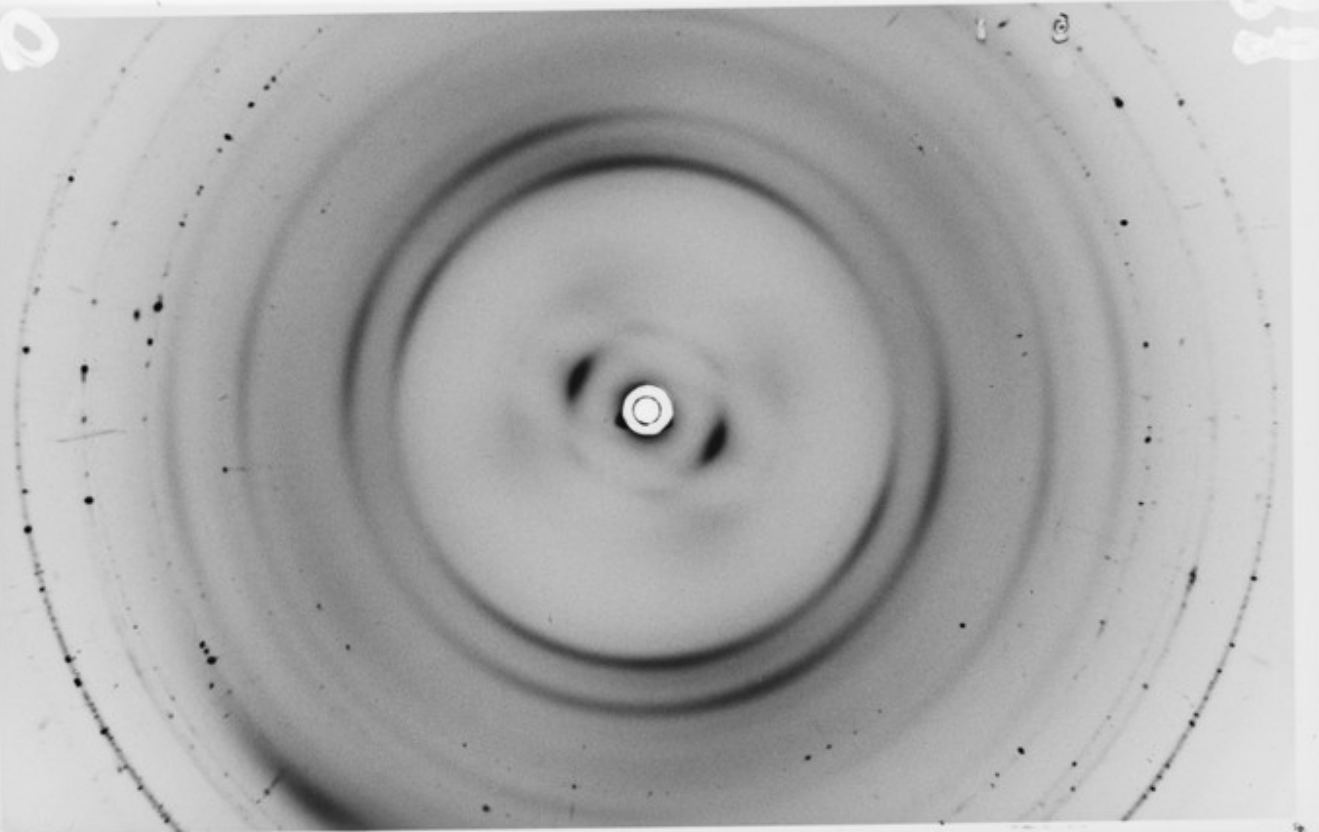
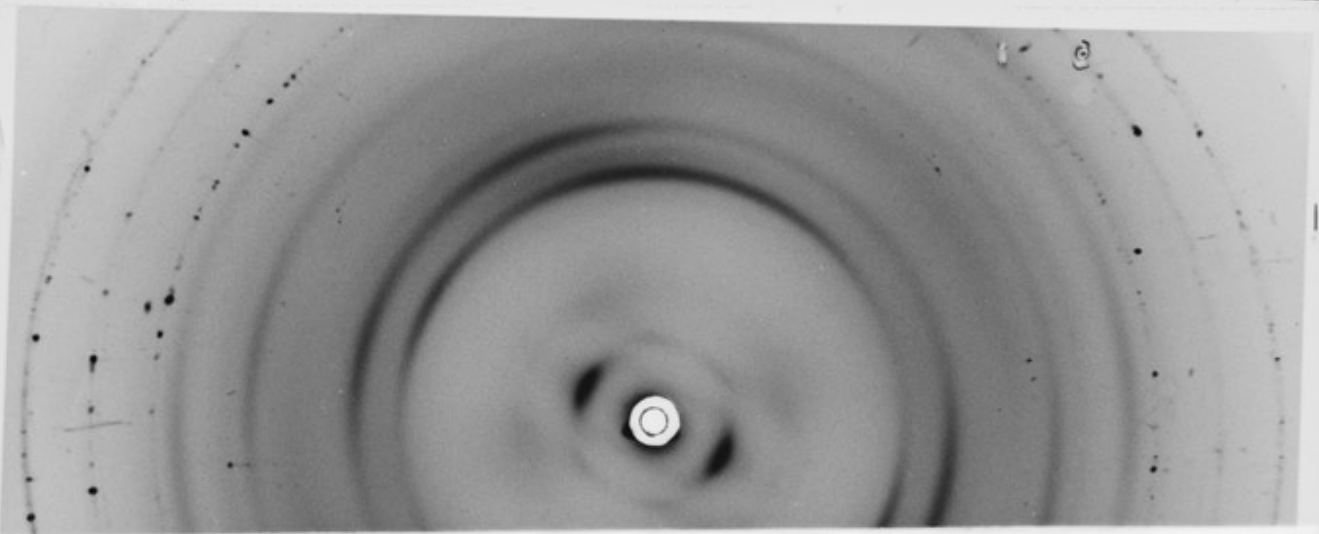
AV VI.  
1288

AV VI.  
1288

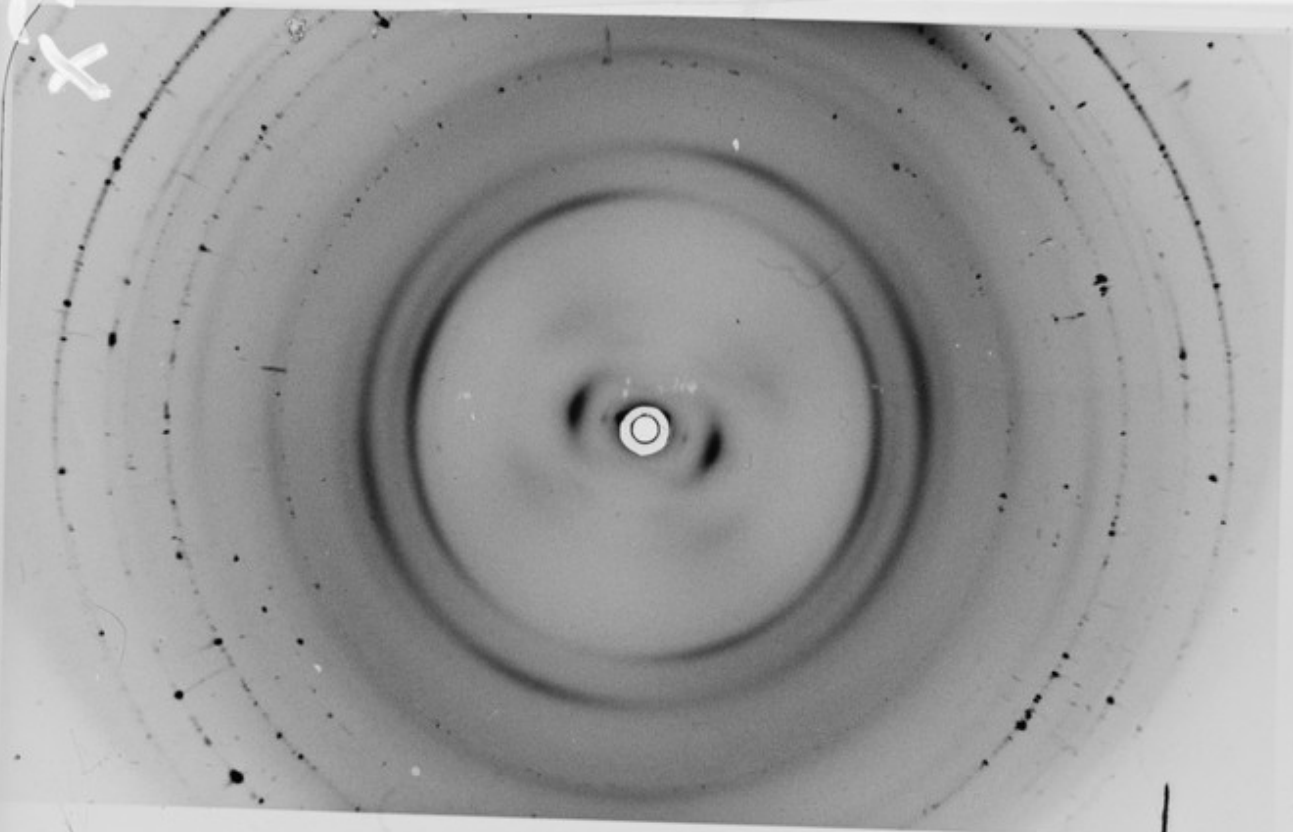
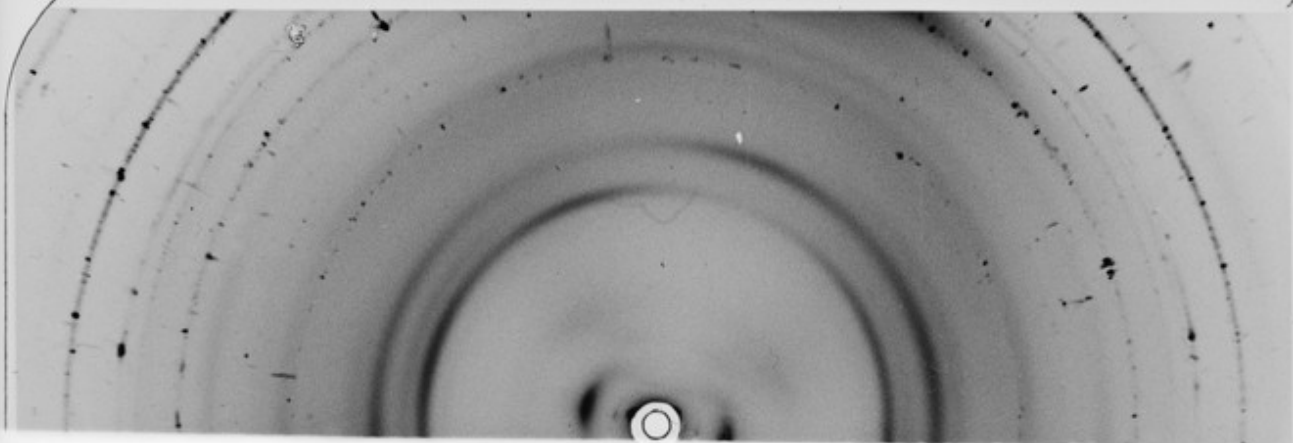
2288



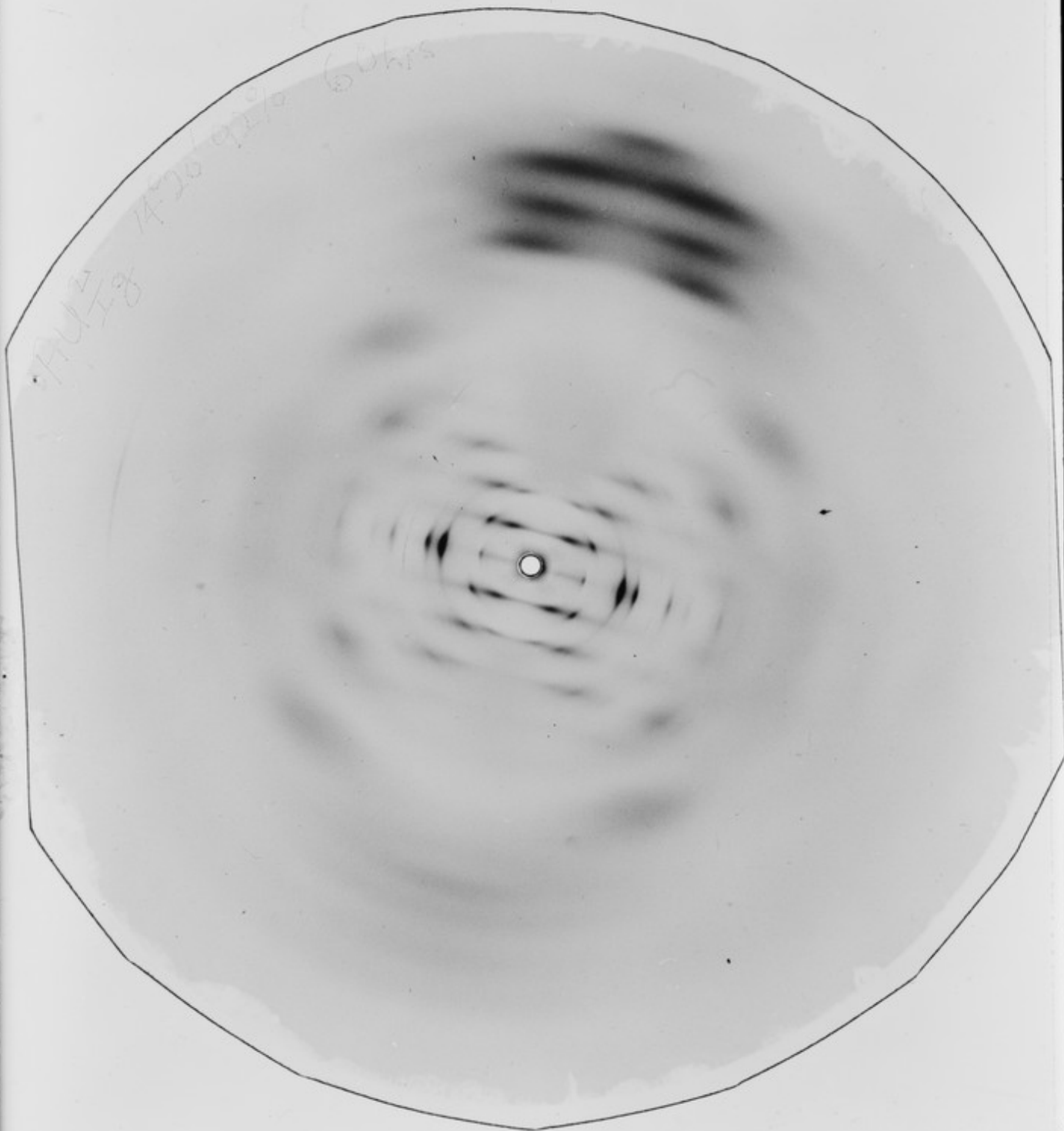








#826

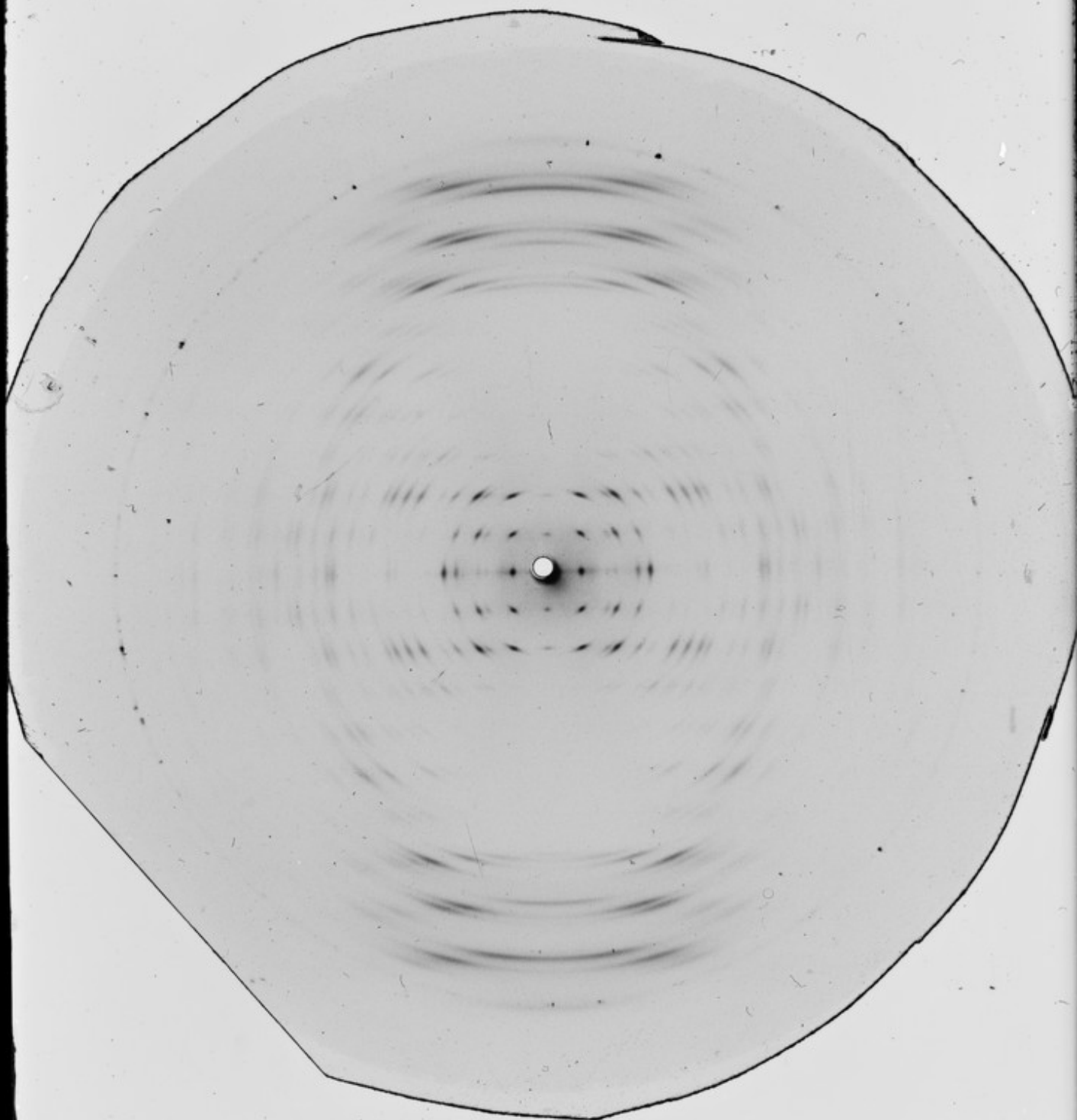


7/11/74  
14:26 9210 60hrs

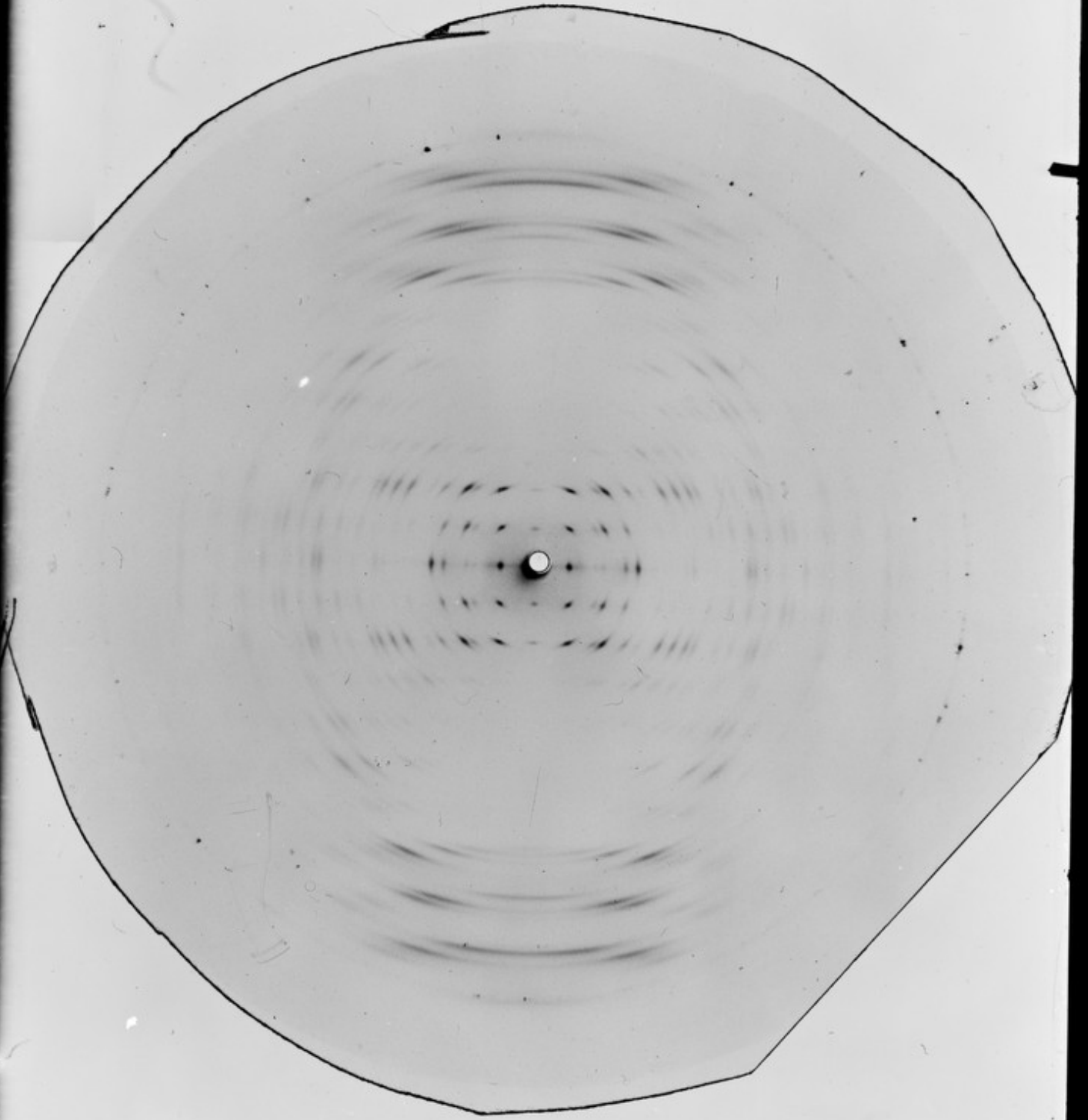




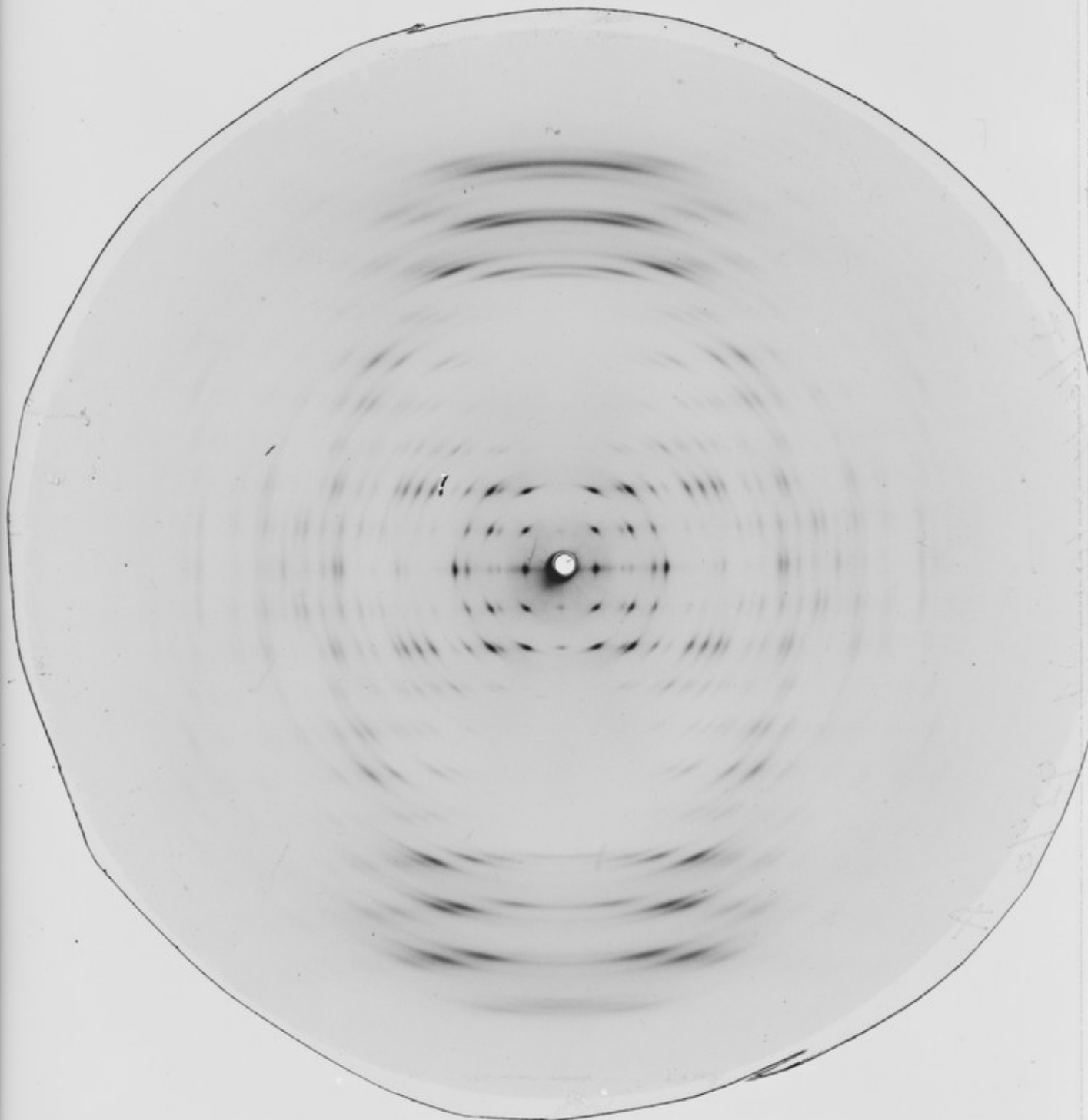
8828



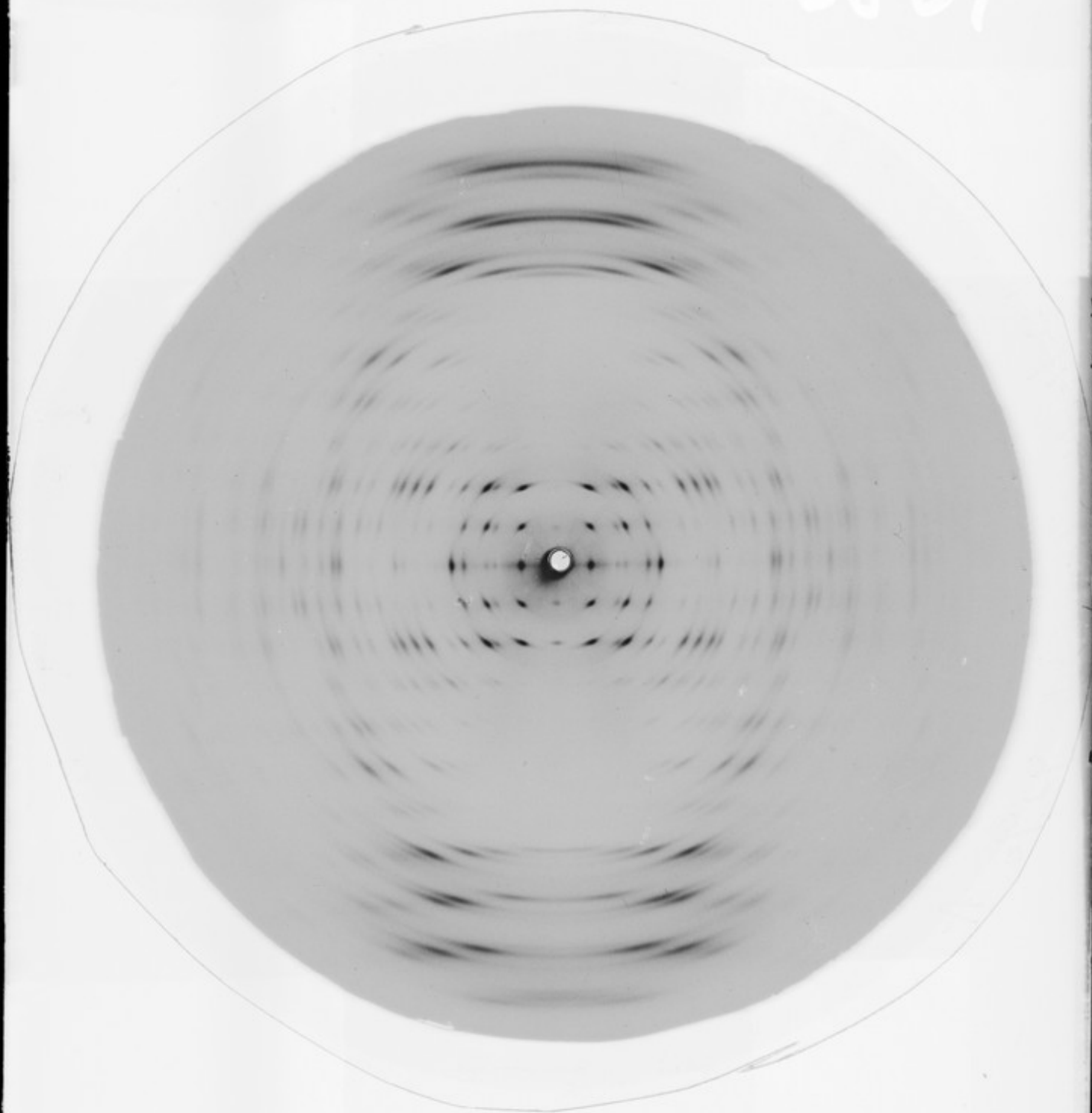
8858



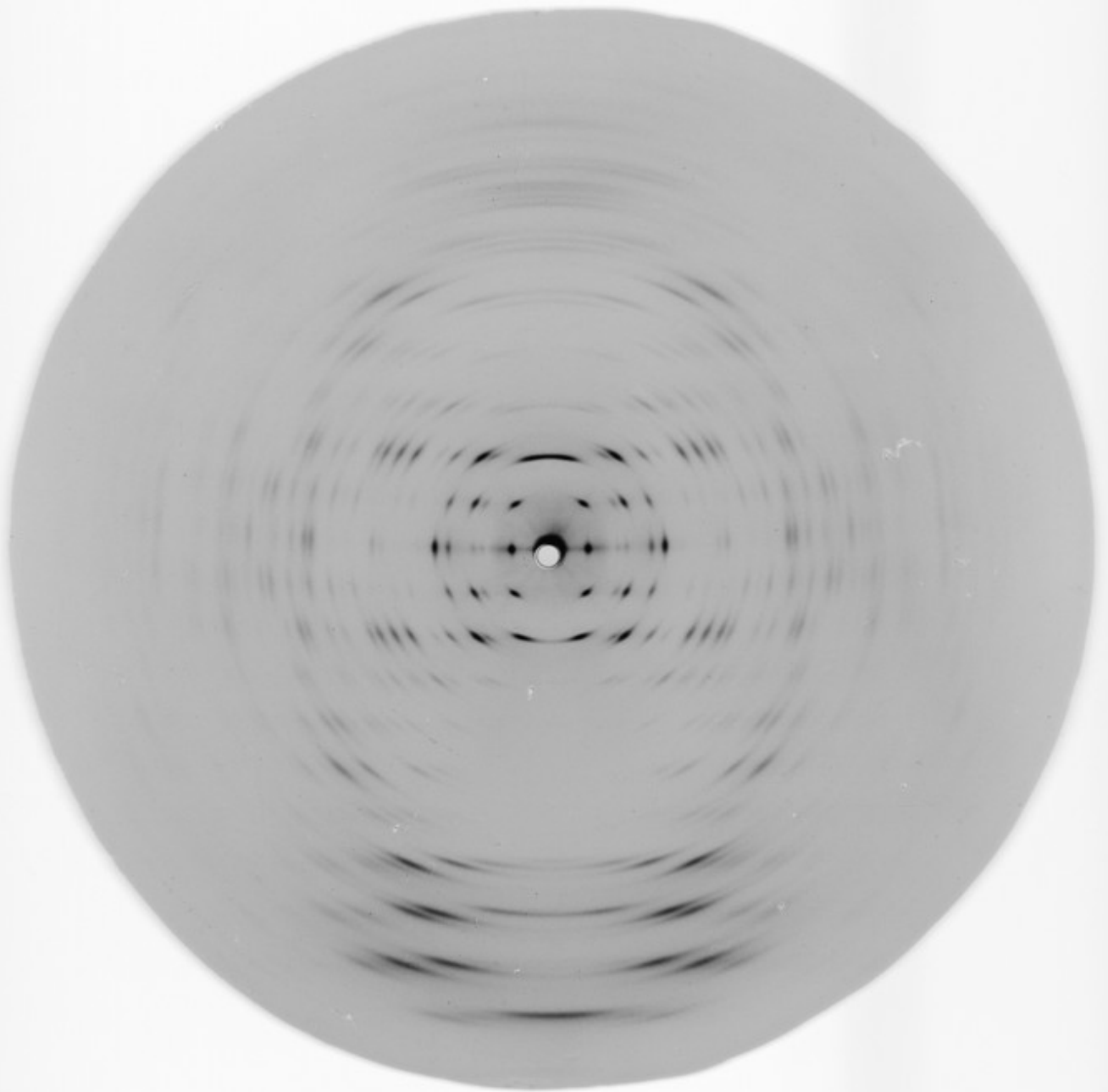
8829



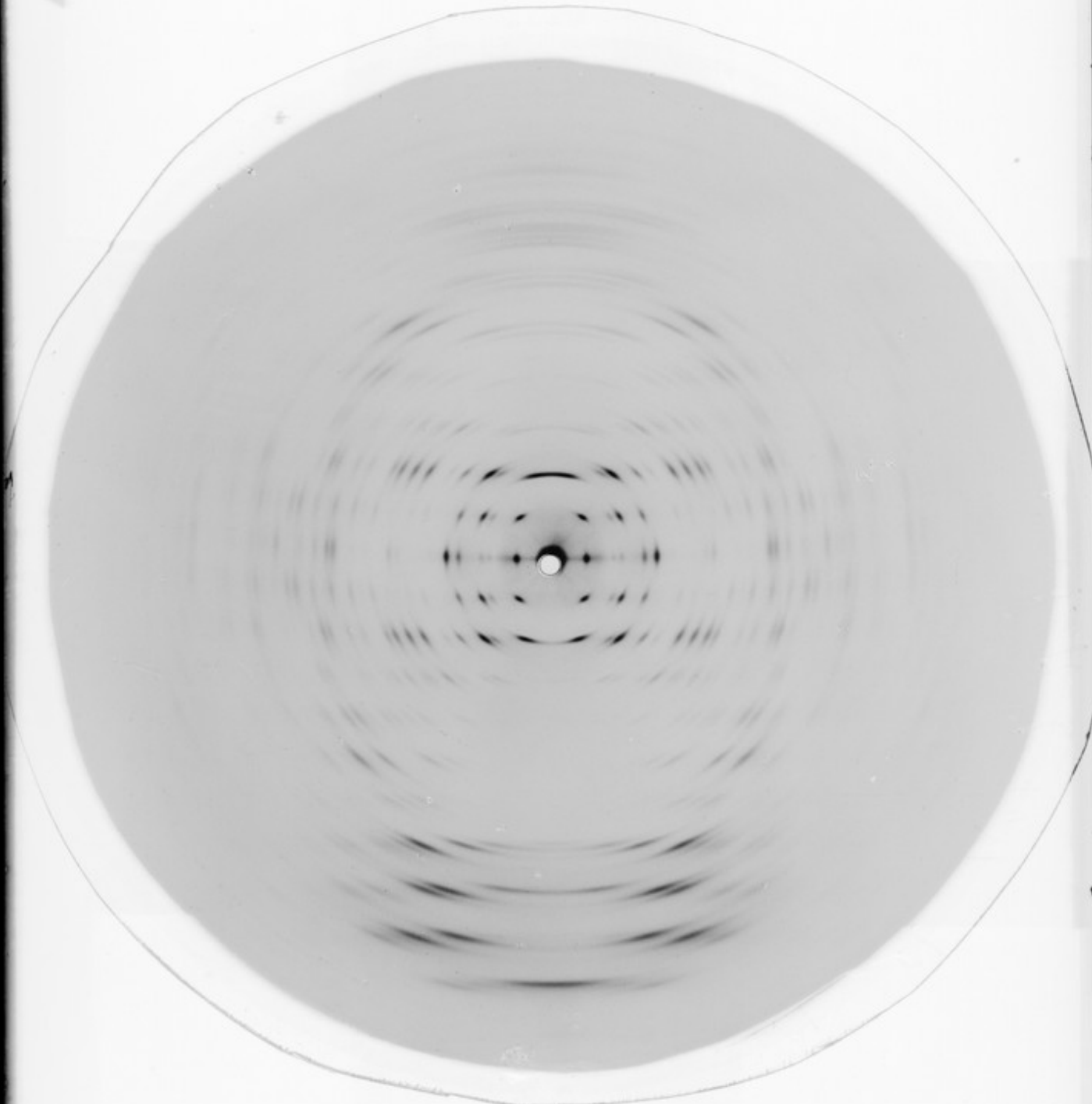
8829



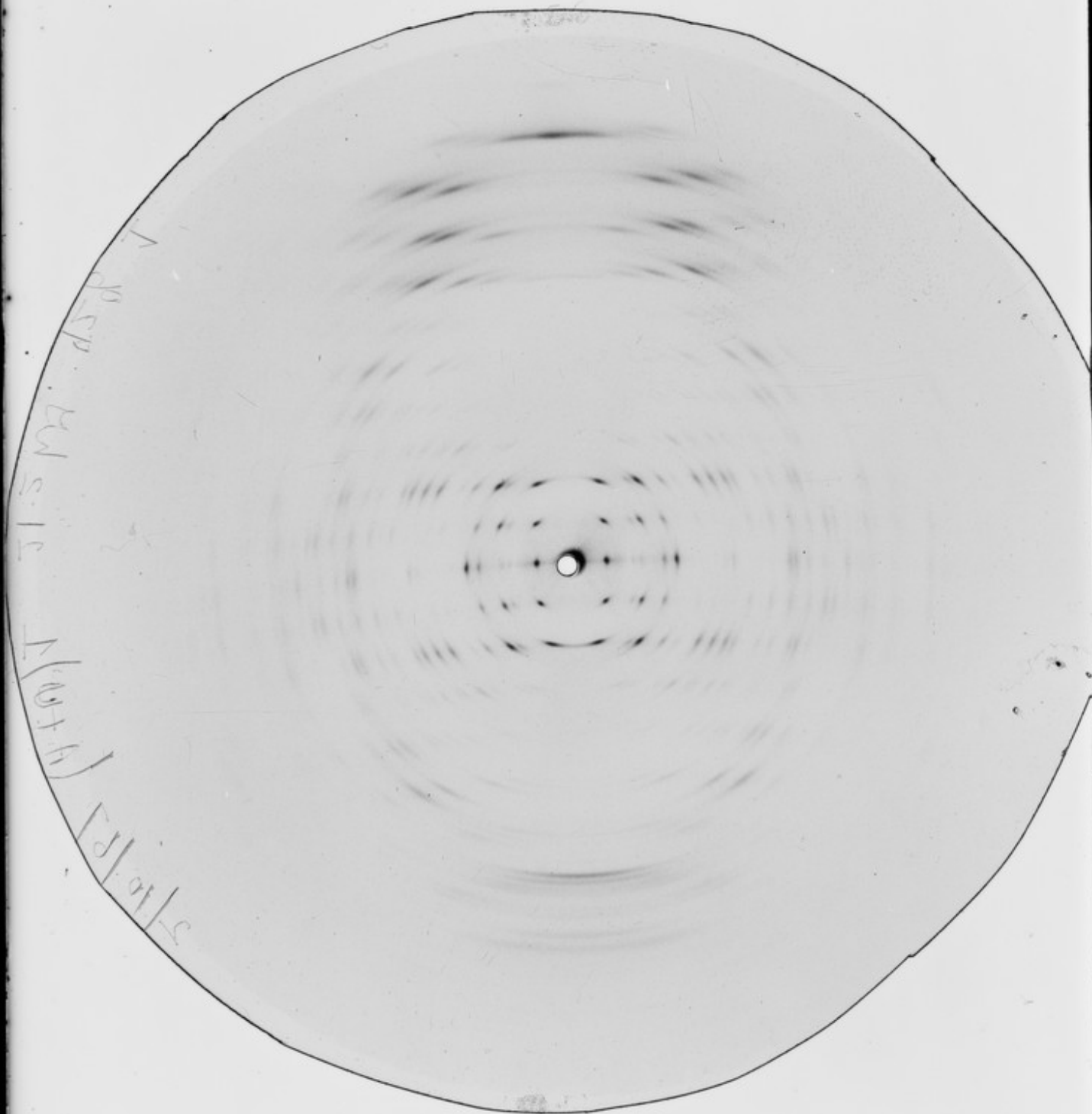




5282

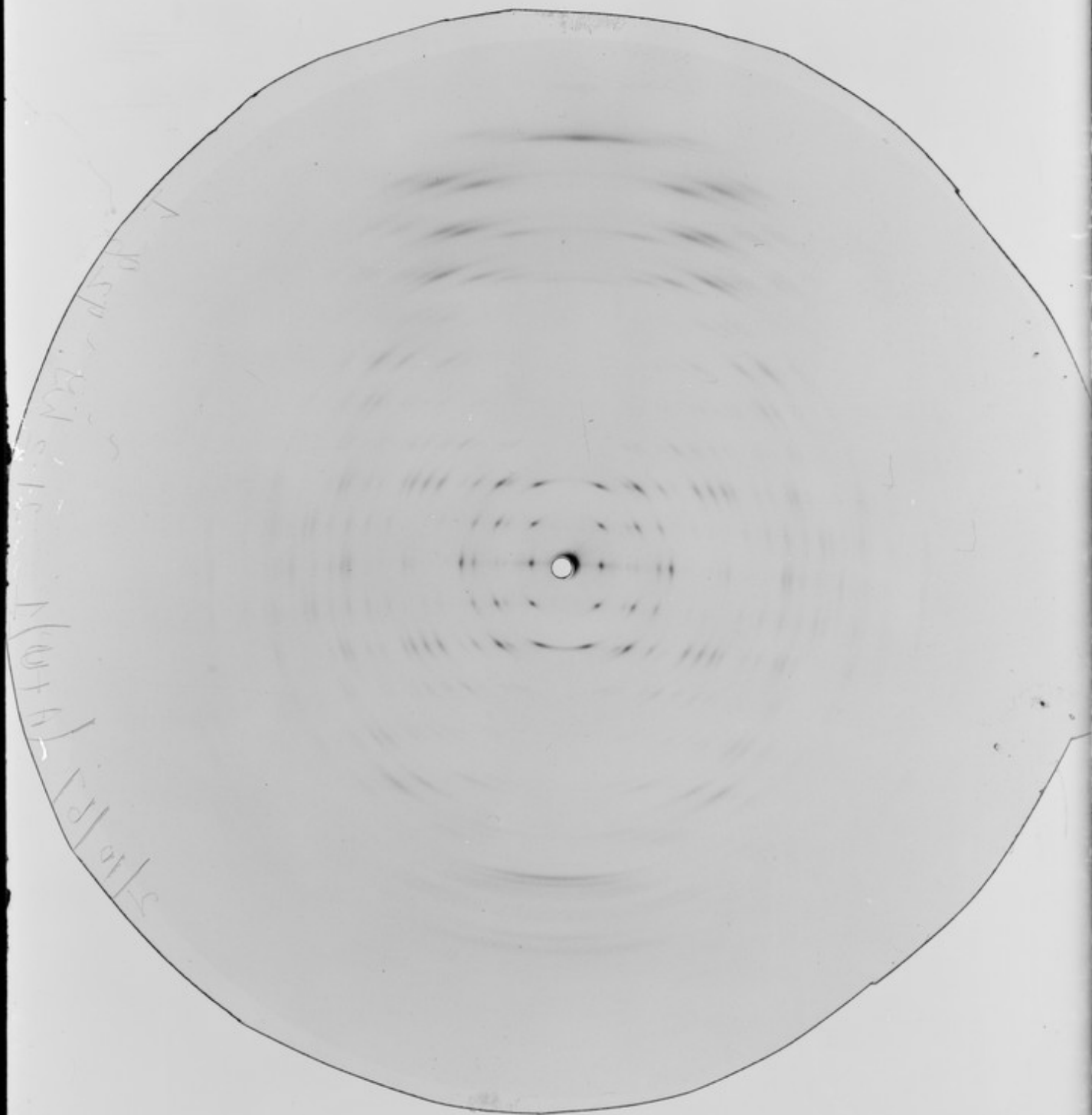


8831



1  
p  
sp.  
cm  
s. 1 c  
N (with H)  
5/10/1915

8831



Handwritten text along the left edge of the circular diagram, possibly describing the specimen or the drawing process. The text is partially obscured and difficult to read, but appears to include the words "Mouth" and "1/10/11".