

## **Graphs and tables relating to fractionation experiments on RNA referenced as 'Dr Brown'**

### **Contributors**

Brown, Geoffrey Lawrence

### **Publication/Creation**

June 1967

### **Persistent URL**

<https://wellcomecollection.org/works/xz6ug9dg>

### **License and attribution**

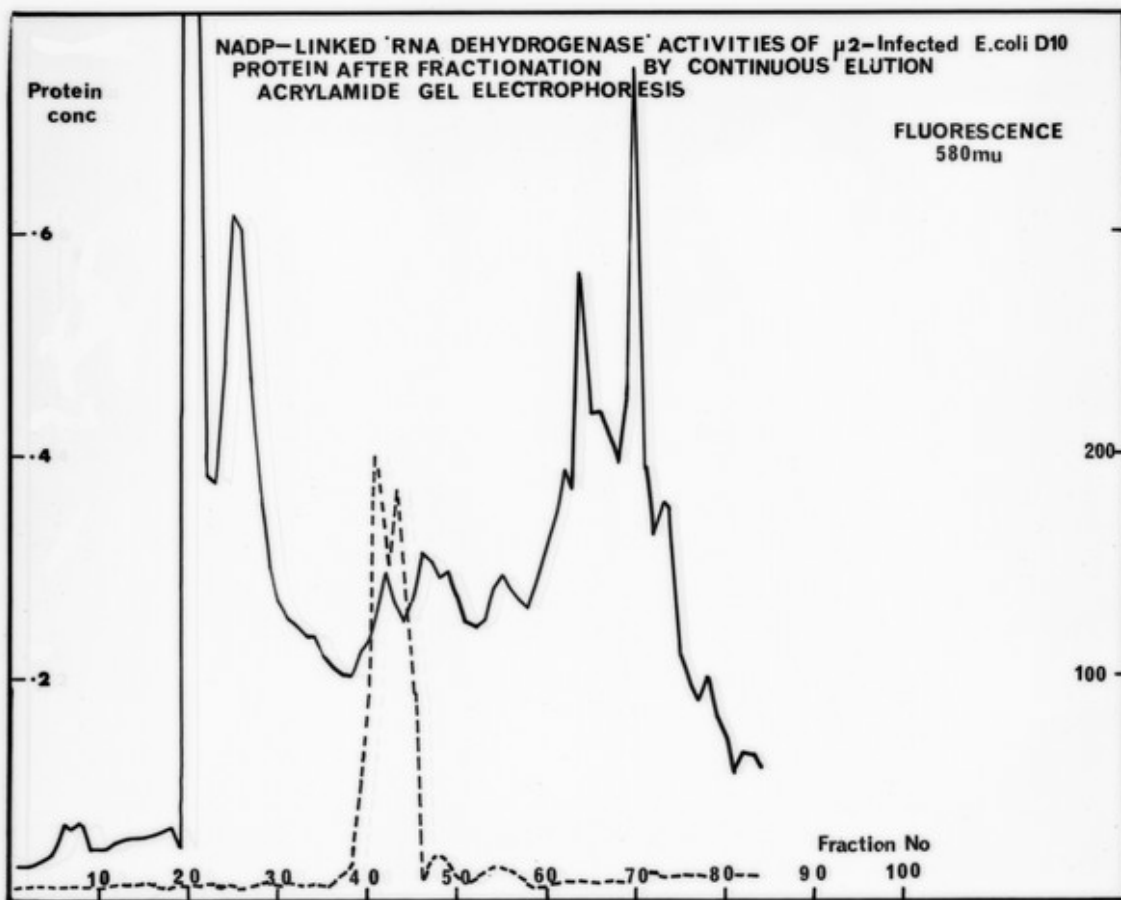
You have permission to make copies of this work under a Creative Commons, Attribution, Non-commercial license.

Non-commercial use includes private study, academic research, teaching, and other activities that are not primarily intended for, or directed towards, commercial advantage or private monetary compensation. See the Legal Code for further information.

Image source should be attributed as specified in the full catalogue record. If no source is given the image should be attributed to Wellcome Collection.



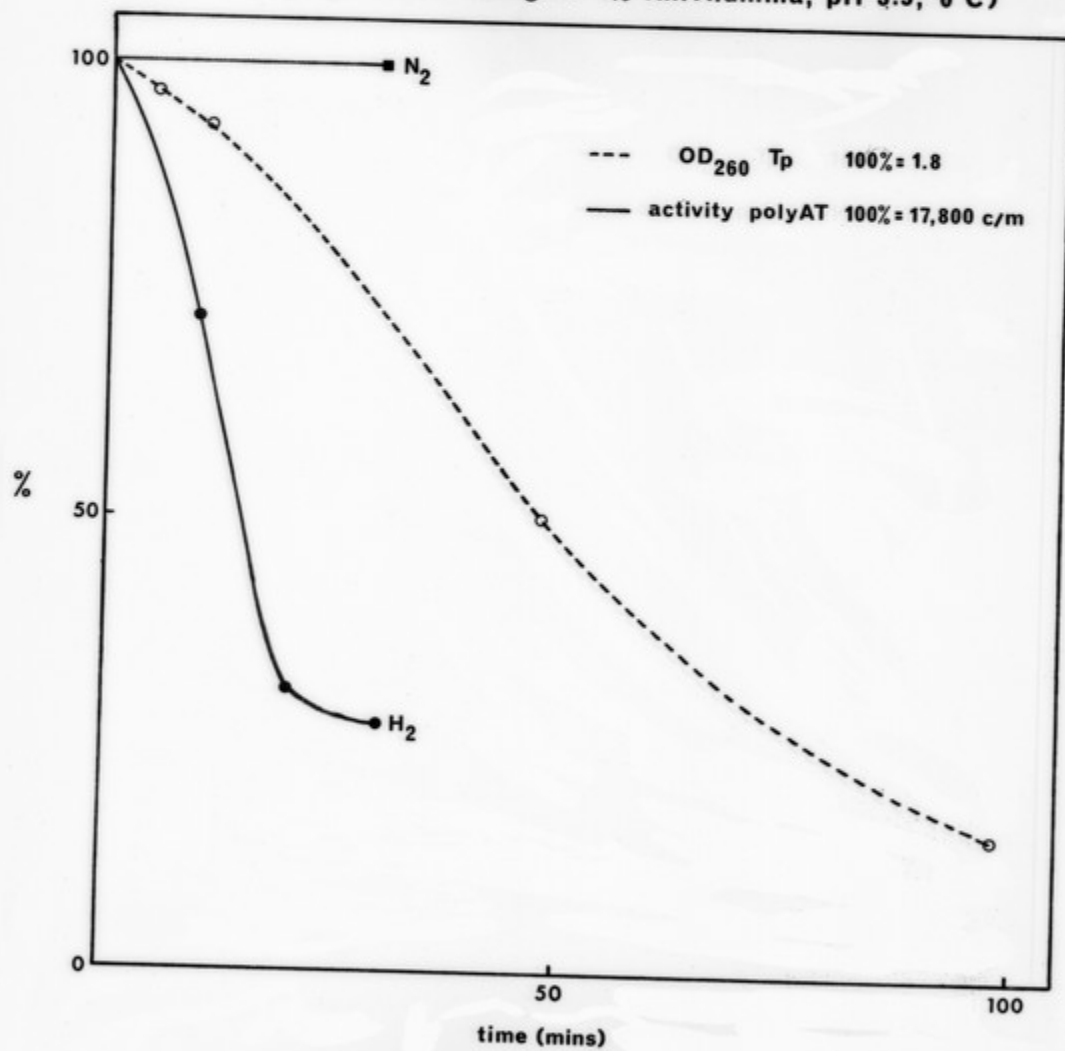
Wellcome Collection  
183 Euston Road  
London NW1 2BE UK  
T +44 (0)20 7611 8722  
E [library@wellcomecollection.org](mailto:library@wellcomecollection.org)  
<https://wellcomecollection.org>



RNA polymerase activity with reduced poly AT  
(0.3 mg/ml 5% Rh/Alumina, pH 3.5, 0°C)

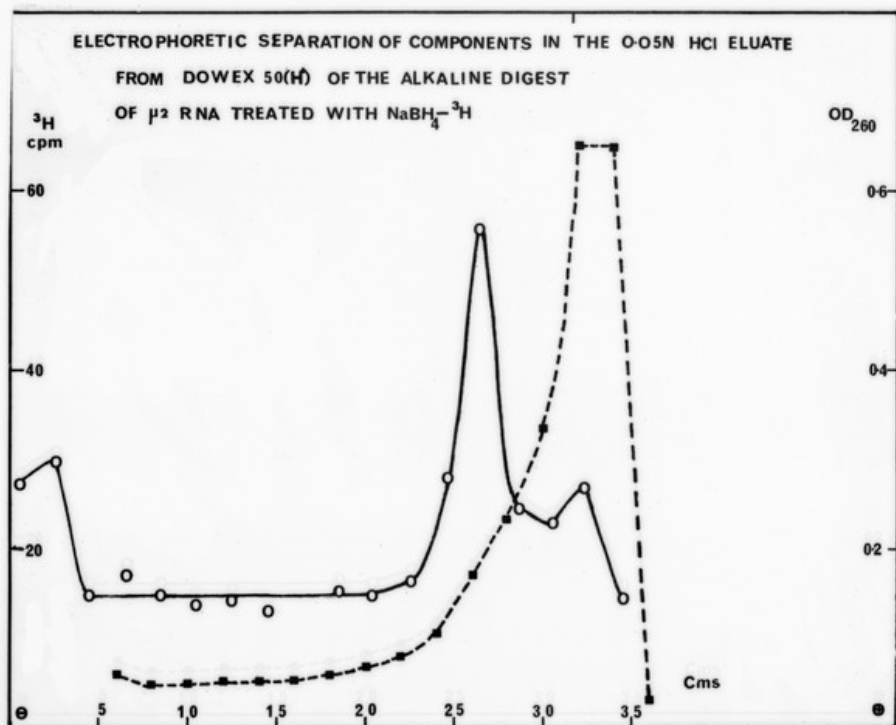
<u>reduction time</u>	<u>UTP incorporation</u>
0 min.	100% (45,000 c/m)
15	97
25	49
120	29
<u>control</u>	
120 min. N <sub>2</sub>	54

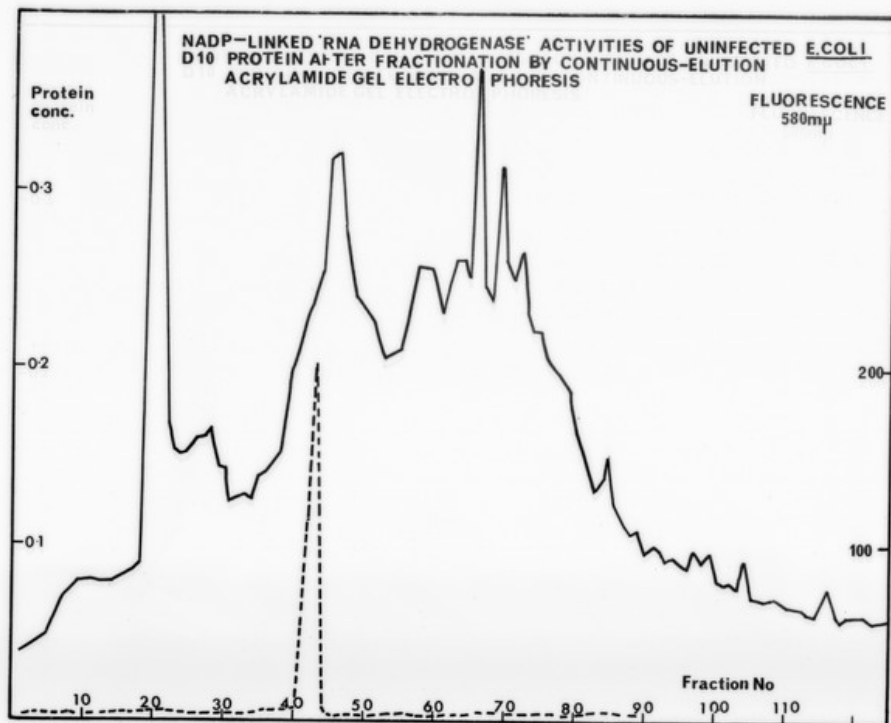
Effect of catalytic reduction on template activity of polyAT with RNA polymerase (2mg/ml 5% Rh/Alumina, pH 3.5, 0°C)



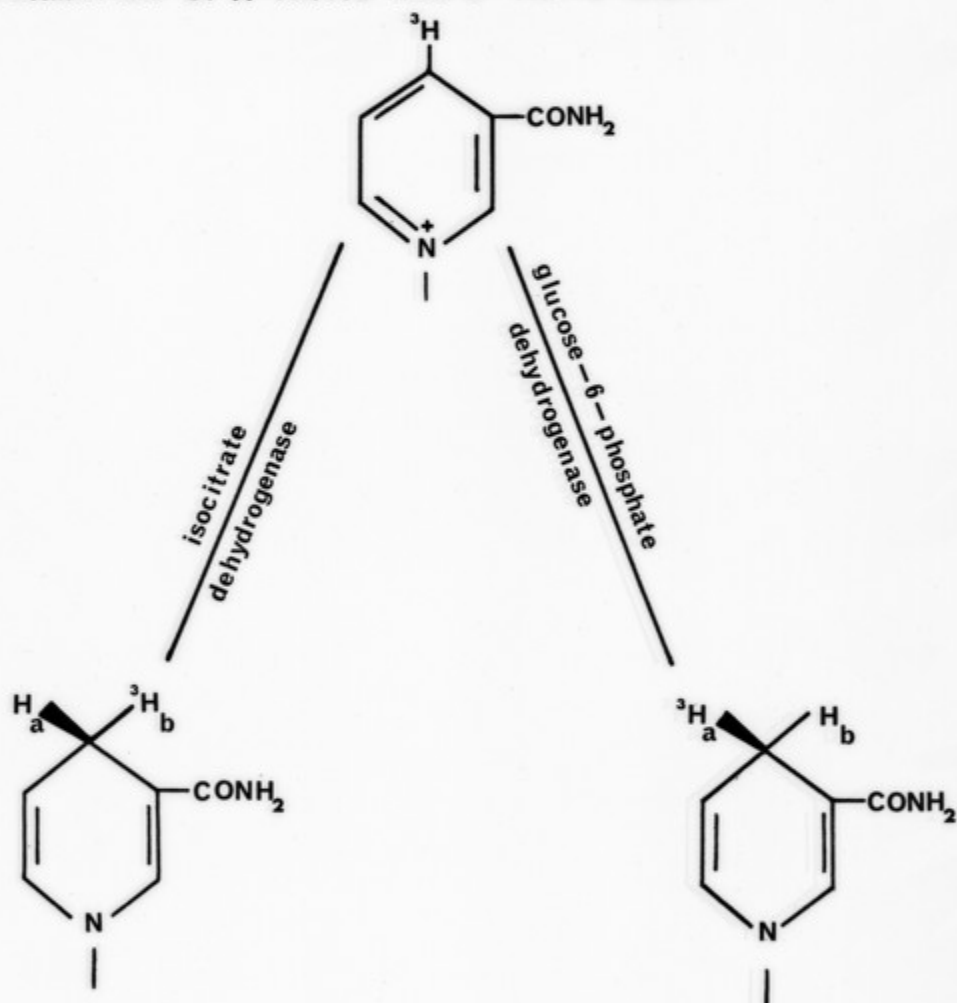
The effects of  $\text{NADP}^+$ , NADPH and an 'acidic histone' fraction from calf thymus nucleohistone on RNA synthesis in vitro with calf thymus DNA and E. coli RNA polymerase.

EXPT NO	ACIDIC HIST.	$\text{NADP}^+$ 20 $\mu\text{g}$	NADPH 20 $\mu\text{g}$	% ACTIVITY
3	-	-	-	100
	-	+	-	96
	-	-	+	94
	+	-	-	73
	+	+	-	83
	+	-	+	22
6	-	-	-	100
	-	+	-	91
	-	-	+	97
	+	-	-	67
	+	+	-	71
	+	-	+	9
Assay according to Richardson(1966)				

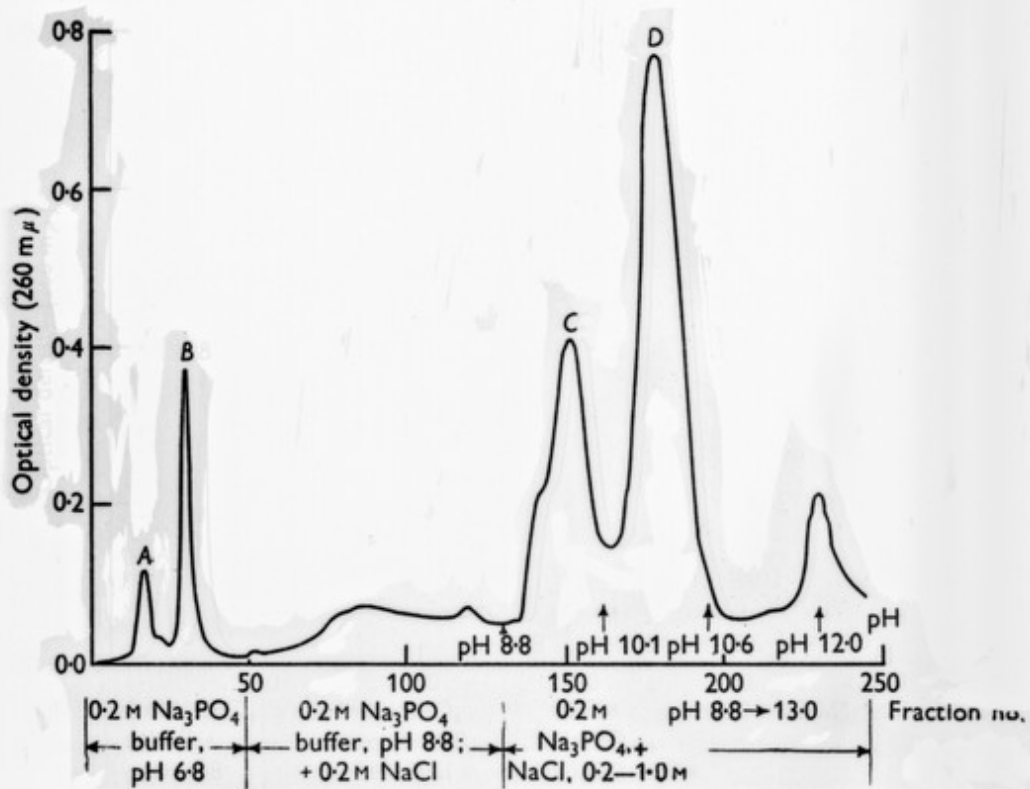




FORMATION OF 'A'-TRITIO AND 'B'-TRITIO NADPH







... complex over a wide range of molarities of the eluting sodium chloride solutions, as shown in Fig. 2, giving fractions with varying base ratios as shown in Table I. Using columns of undenatured histone coupled