

**Graphs and tables relating to research relating to soluble RNA (s-RNA)
referenced as 'Dr Brown'**

Contributors

Brown, Geoffrey Lawrence

Publication/Creation

March 1967

Persistent URL

<https://wellcomecollection.org/works/nf5esbxj>

License and attribution

You have permission to make copies of this work under a Creative Commons, Attribution, Non-commercial license.

Non-commercial use includes private study, academic research, teaching, and other activities that are not primarily intended for, or directed towards, commercial advantage or private monetary compensation. See the Legal Code for further information.

Image source should be attributed as specified in the full catalogue record. If no source is given the image should be attributed to Wellcome Collection.



Wellcome Collection
183 Euston Road
London NW1 2BE UK
T +44 (0)20 7611 8722
E library@wellcomecollection.org
<https://wellcomecollection.org>

2408

BINDING OF METHIONYL S-RNA BY A(H₂U)G AND A(H₂O,U)G

	<u>Oligonucleotide</u>	<u>Olig. concentration</u>	<u>Mg. conc.</u>	<u>methionine bound</u>
A.	A U G	0.092 A ₂₆₀ units	0.01 M	2.82 μMole
	A(H ₂ U)G	0.092		0.19
B.	A U G	0.092	0.006	1.27
	A(H ₂ U)G	0.092		0.03
C.	A U G	0.36 mμMoles	0.01	1.42
	A(H ₂ O,U)G	0.36		0.23
	heated A(H ₂ O,U)G	0.36		1.47
				(background 0.30)

SEPARATION OF FRAGMENTS FROM RNA^{ase} DIGEST

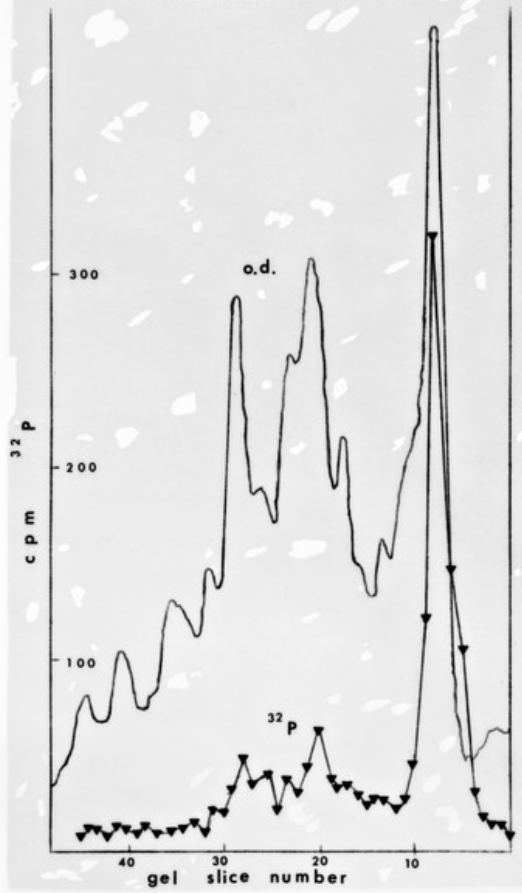
LENGTH SORT (pH 7.8) Isoplith no	BASE COMP. SORT pH 7.8	No. FRAGMENTS Per MOLECULE
7	1 2 3 4 5 6 7 8 9	1 1 1 2 2 1 2 1 1
8	1 2 3 4 5	1 2 1 1 1
9	1 2 3	1 1 1
10	1	1
11	1	1

AMINO ACID COMPOSITION OF $\mu 2$ AND f2

AMINO ACID	$\mu 2$	f2
Lysine	6	6
Arginine	4	4
Aspartic	15	14 •
Threonine	8	9 •
Serine	12	13 •
Glutamine	10	11 •
Proline	6	6
Glycine	10	9 •
Alanine	15	14 •
Cysteine	2	2
Valine	14	14
Methionine	2	1 •
Isoleucine	8	8
Leucine	7	8 •
Tyrosine	4	4
Phenylalanine	4	4
Tryptophane	2	2
Histidine	0	0
Total	129	129
N-Terminal	Alanine	Alanine

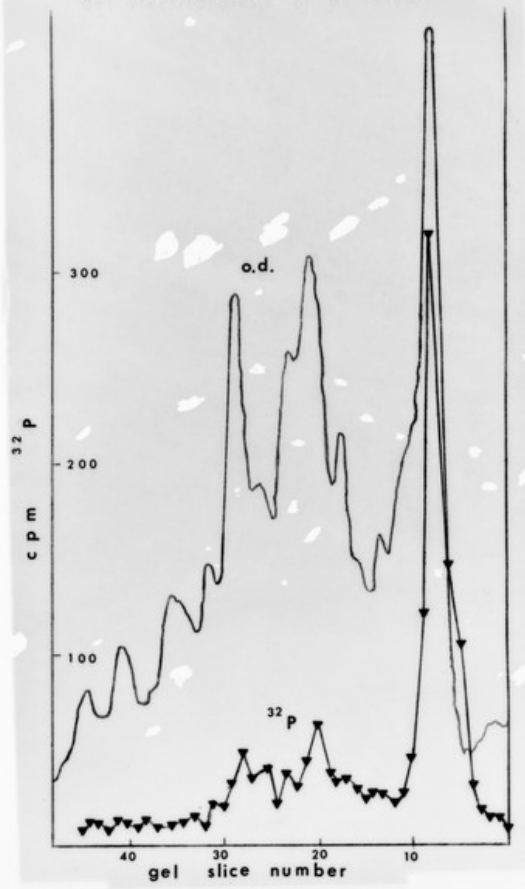
1208

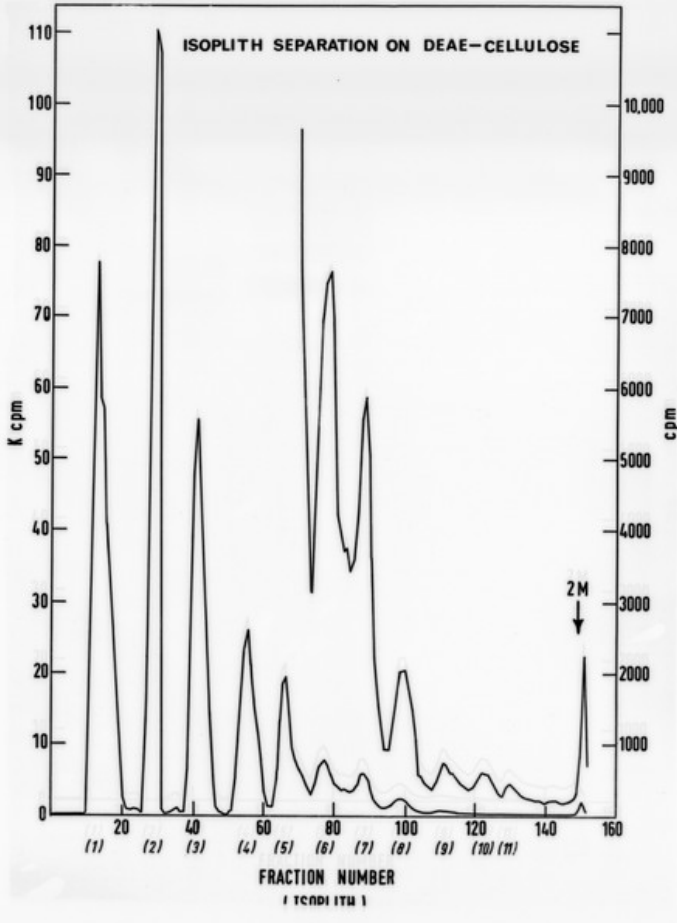
gel electrophoresis of $\mu 2$ RNA



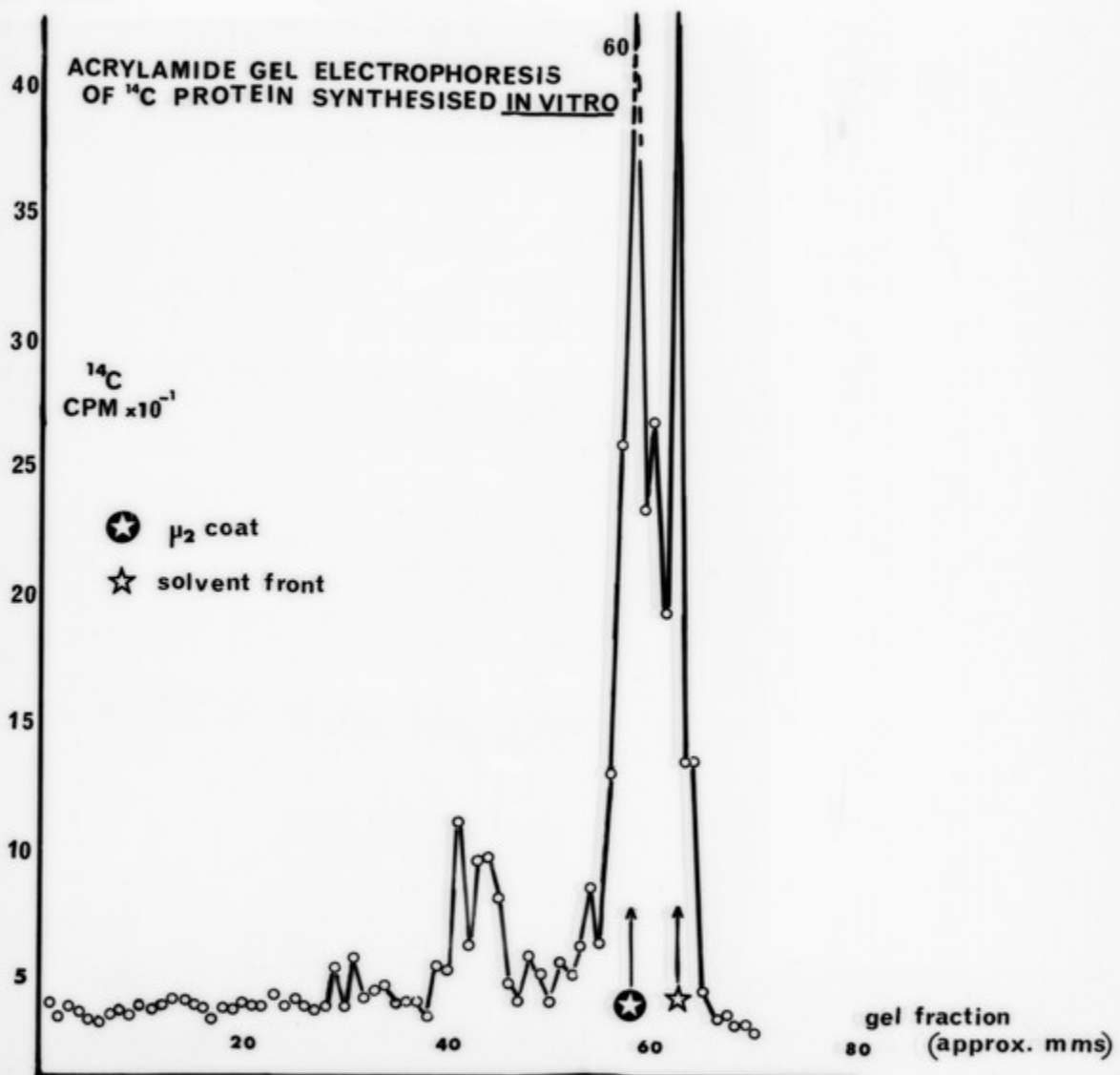
2102

gel electrophoresis of $\mu 2$ RNA

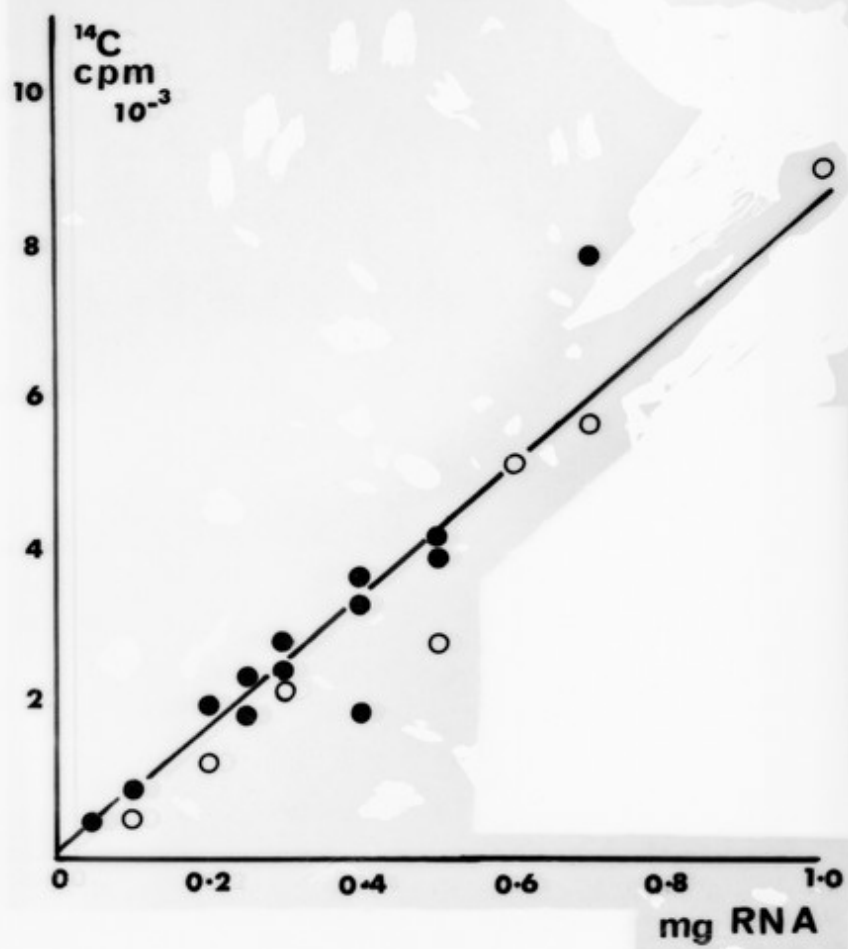




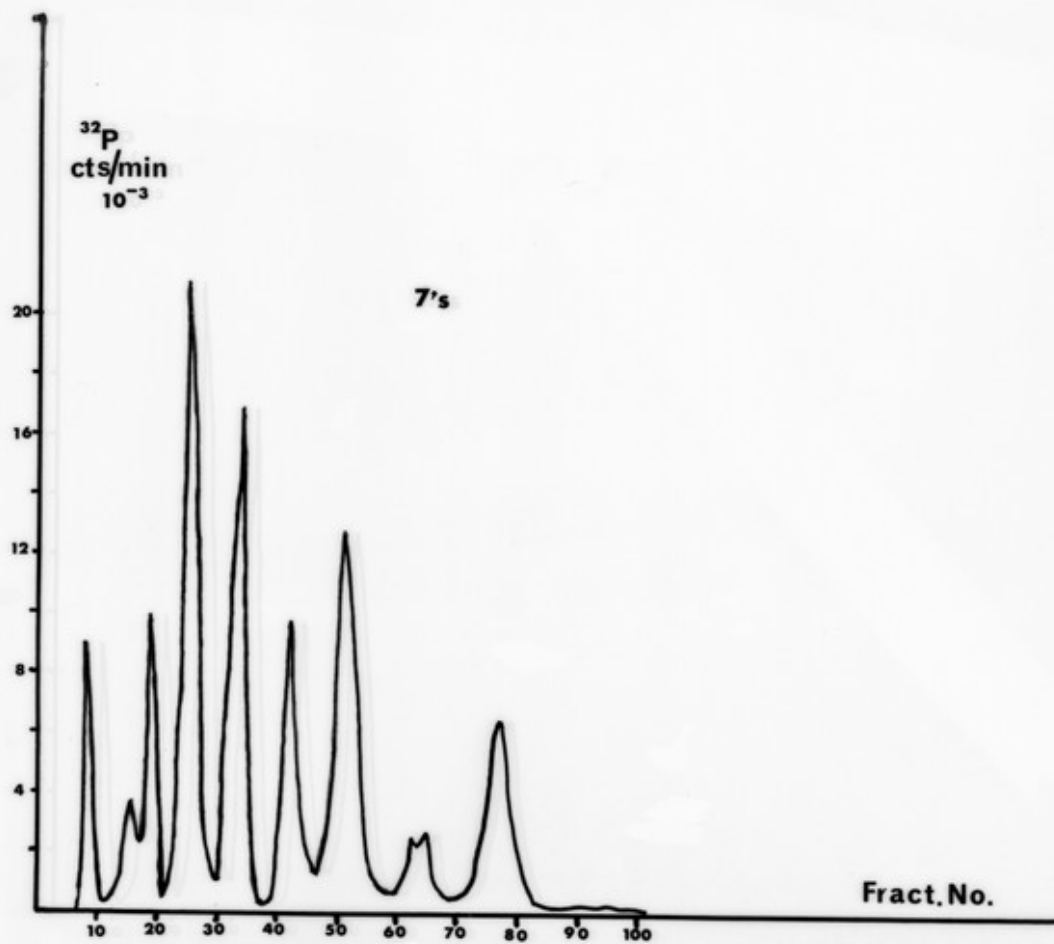
8047



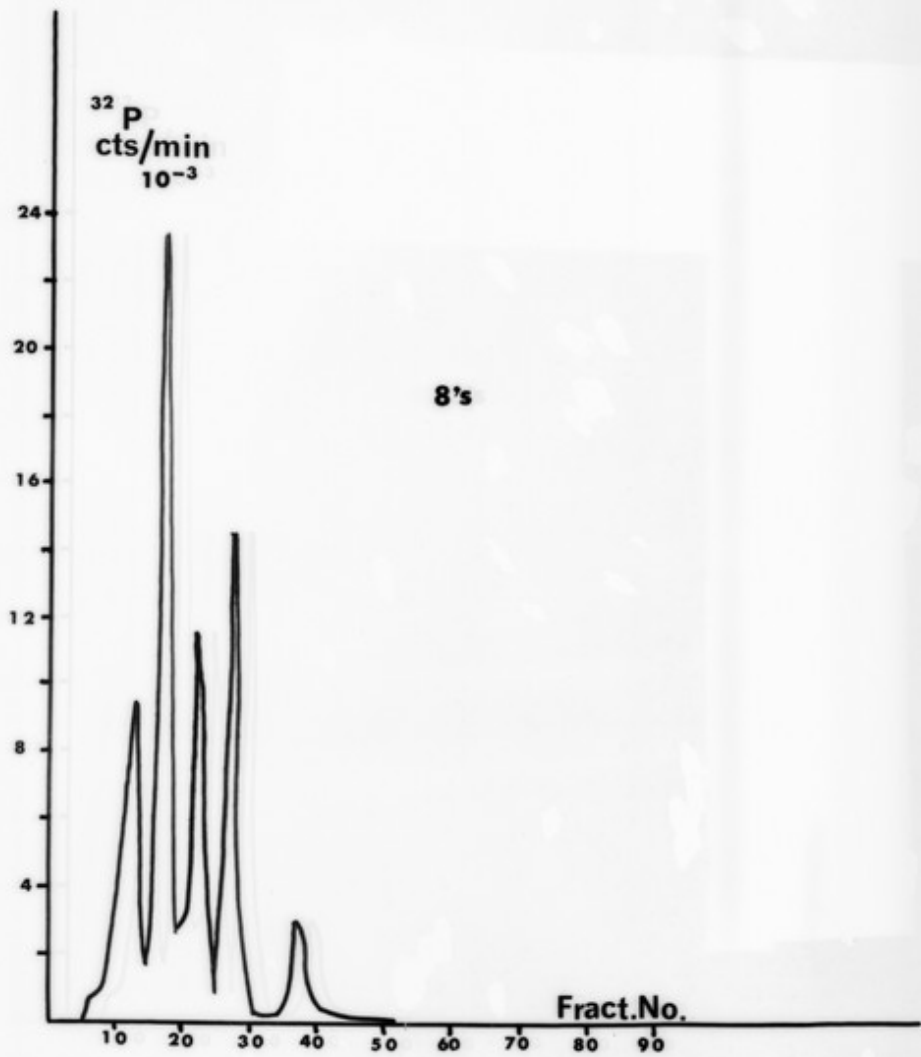
$\mu 2$ -Directed Incorporation of ^{14}C -Lysine
into Protein in vitro



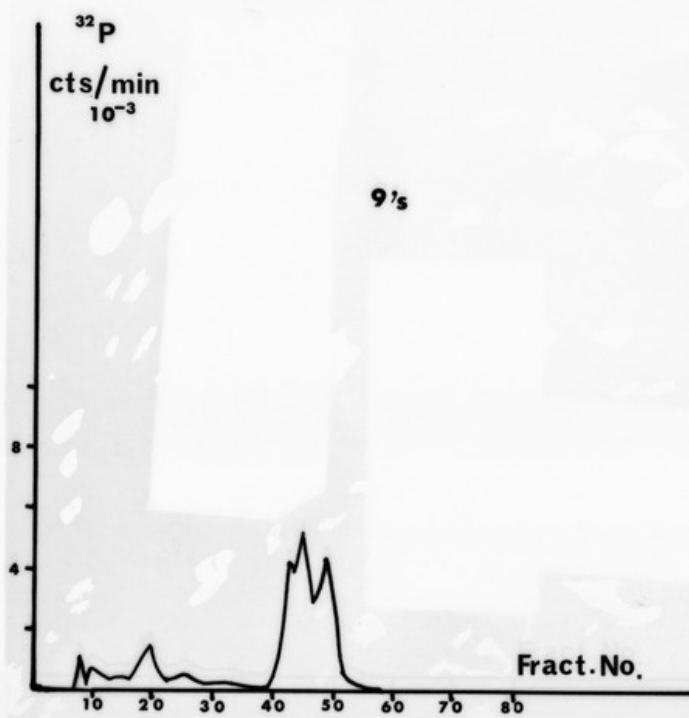
FRACTIONATION OF ISOPLITHS ON DEAE-SEPHADEX



FRACTIONATION OF ISOPLITHS ON DEAE-SEPHADEX



FRACTIONATION OF ISOPLITHS ON DEAE-SEPHADEX



FRACTIONATION OF ISOPLITHS ON DEAE-SEPHADEX

