

Series of printed microscope images referenced as "Shapes of bacteriophage growth"

Contributors

Lee, Dr. S.

Publication/Creation

February 1965

Persistent URL

<https://wellcomecollection.org/works/dp4cvhgu>

License and attribution

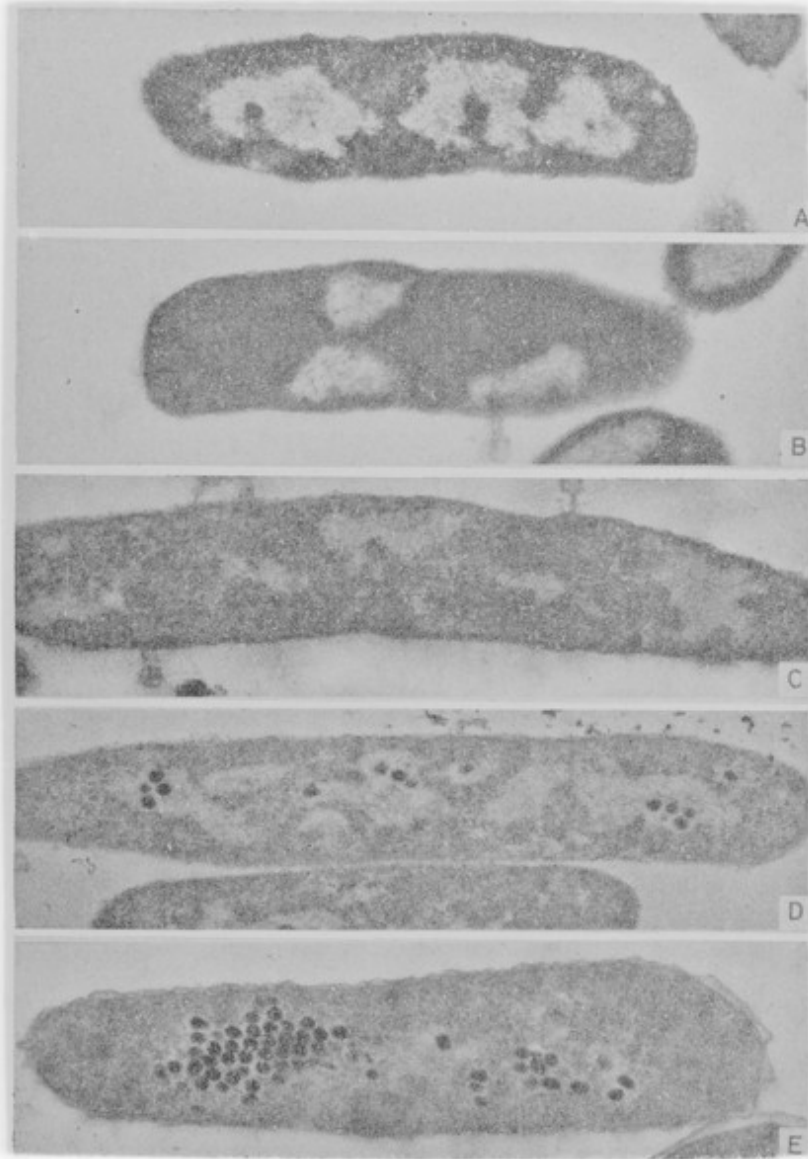
You have permission to make copies of this work under a Creative Commons, Attribution, Non-commercial license.

Non-commercial use includes private study, academic research, teaching, and other activities that are not primarily intended for, or directed towards, commercial advantage or private monetary compensation. See the Legal Code for further information.

Image source should be attributed as specified in the full catalogue record. If no source is given the image should be attributed to Wellcome Collection.



Wellcome Collection
183 Euston Road
London NW1 2BE UK
T +44 (0)20 7611 8722
E library@wellcomecollection.org
<https://wellcomecollection.org>



16. Electron micrographs of *Salmonella typhimurium* at various stages of phage development before infection of a bacterial nucleus. (A) 10 minutes after infection; (B) 20 minutes after infection; (C) 30 minutes after infection; (D) 40 minutes after infection; (E) 50 minutes after infection. The phage heads are indicated by arrows. The time when the phage heads are produced is indicated by the arrows. (From *Journal of Bacteriology*, 68, 1959, 100-101, by permission of the American Society for Microbiology.)