

**Copy of a printed diagram captioned " 32 classes of crystal symmetry"
referenced as "32 xtal classes 2"**

Contributors

Fuller, Watson, 1935-

Publication/Creation

January 1965

Persistent URL

<https://wellcomecollection.org/works/t8qnhxaj>

License and attribution

You have permission to make copies of this work under a Creative Commons, Attribution, Non-commercial license.

Non-commercial use includes private study, academic research, teaching, and other activities that are not primarily intended for, or directed towards, commercial advantage or private monetary compensation. See the Legal Code for further information.

Image source should be attributed as specified in the full catalogue record. If no source is given the image should be attributed to Wellcome Collection.



Wellcome Collection
183 Euston Road
London NW1 2BE UK
T +44 (0)20 7611 8722
E library@wellcomecollection.org
<https://wellcomecollection.org>



IV
Digonal polar



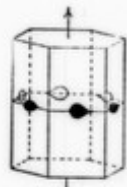
VIII
Di-digonal equatorial



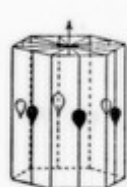
XII
Di-trigonal polar



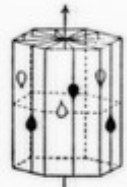
XVI
Hexagonal holoaxial



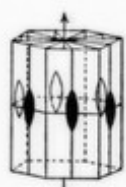
XVII
Hexagonal equatorial



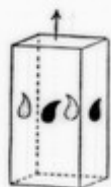
XVIII
Di-hexagonal polar



XIX
Di-hexagonal alternating



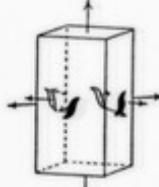
XX
Di-hexagonal equatorial



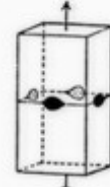
XXI
Tetragonal polar



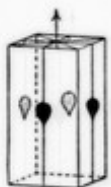
XXII
Tetragonal alternating



XXIII
Tetragonal holoaxial



XXIV
Tetragonal equatorial



XXV
Di-tetragonal polar



XXVI
Di-tetragonal alternating



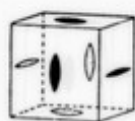
XXVII
Di-tetragonal equatorial



XXVIII
Tesseral polar



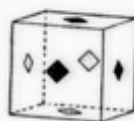
XXIX
Tesseral holoaxial



XXX
Tesseral central



XXXI
Di-tesseral polar



XXXII
Di-tesseral central

The thirty-two classes of crystal symmetry

The symmetry is shown by etched forms
(From *Mineralogy*, H. A. Miers; Macmillan, 1929)