

Copy of a printed image of rotation x-ray diffraction exposures referenced as "Rotation x-ray patterns"

Contributors

Fuller, Watson, 1935-

Publication/Creation

January 1965

Persistent URL

<https://wellcomecollection.org/works/zwtzm8vp>

License and attribution

You have permission to make copies of this work under a Creative Commons, Attribution, Non-commercial license.

Non-commercial use includes private study, academic research, teaching, and other activities that are not primarily intended for, or directed towards, commercial advantage or private monetary compensation. See the Legal Code for further information.

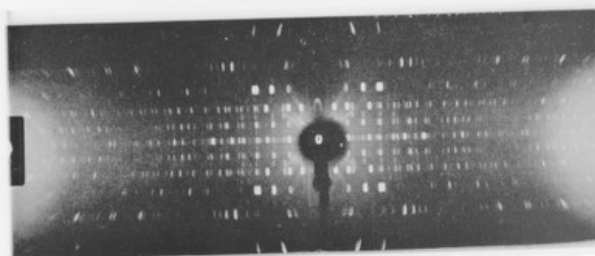
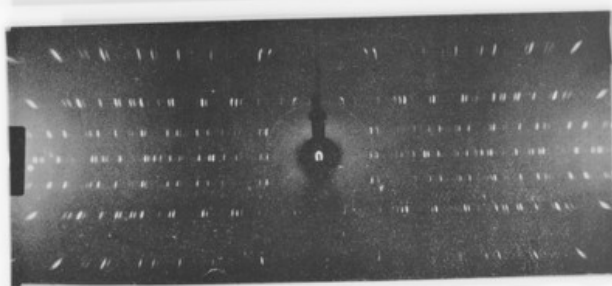
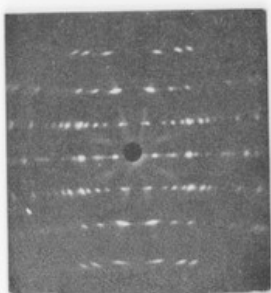
Image source should be attributed as specified in the full catalogue record. If no source is given the image should be attributed to Wellcome Collection.



Wellcome Collection
183 Euston Road
London NW1 2BE UK
T +44 (0)20 7611 8722
E library@wellcomecollection.org
<https://wellcomecollection.org>

[illegible]

in water the very narrow beam of an x-ray penetrates a crystal and forms a diffraction pattern in a certain plane. These rays are recorded on a photographic film and form a pattern into a crystal. The pattern is then measured in the h - k plane. The crystal is then rotated and the measurement is repeated. This is done until the whole crystal is scanned. The data are then used to calculate the structure of the crystal. The crystal is then rotated and the measurement is repeated. This is done until the whole crystal is scanned. The data are then used to calculate the structure of the crystal.



Rotation photographs