

**Copy of a printed optical diffraction image referenced as "Lipson and Taylor I"**

**Contributors**

Fuller, Watson, 1935-

**Publication/Creation**

January 1965

**Persistent URL**

<https://wellcomecollection.org/works/c7rg97nj>

**License and attribution**

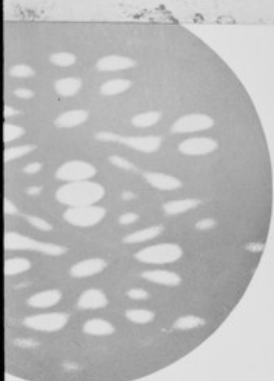
You have permission to make copies of this work under a Creative Commons, Attribution, Non-commercial license.

Non-commercial use includes private study, academic research, teaching, and other activities that are not primarily intended for, or directed towards, commercial advantage or private monetary compensation. See the Legal Code for further information.

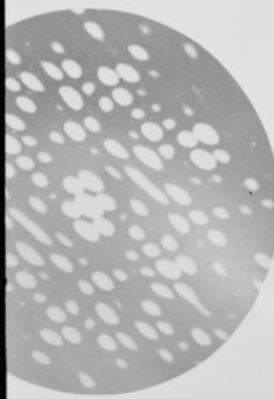
Image source should be attributed as specified in the full catalogue record. If no source is given the image should be attributed to Wellcome Collection.



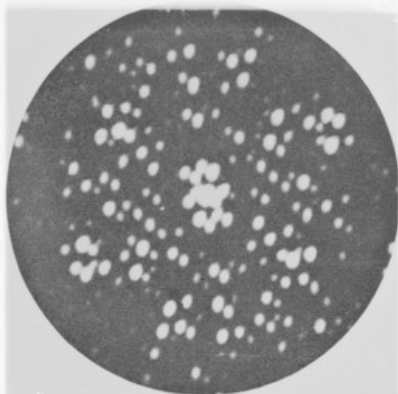
Wellcome Collection  
183 Euston Road  
London NW1 2BE UK  
T +44 (0)20 7611 8722  
E [library@wellcomecollection.org](mailto:library@wellcomecollection.org)  
<https://wellcomecollection.org>



of 2 (for ease of comparison). The two related units are now regarded as the contents of a single unit cell



Optical transform of two adjacent unit cells as for 3  
(The mask used is shown in 70(1c))



5 Optical transform of four adjacent unit cells as for 3

