

Copy of a printed optical diffraction image referenced as "Lipson and Taylor I"

Contributors

Fuller, Watson, 1935-

Publication/Creation

January 1965

Persistent URL

<https://wellcomecollection.org/works/takkk6sn>

License and attribution

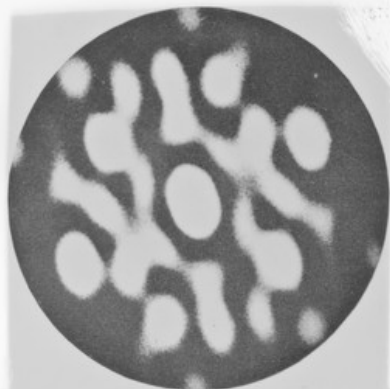
You have permission to make copies of this work under a Creative Commons, Attribution, Non-commercial license.

Non-commercial use includes private study, academic research, teaching, and other activities that are not primarily intended for, or directed towards, commercial advantage or private monetary compensation. See the Legal Code for further information.

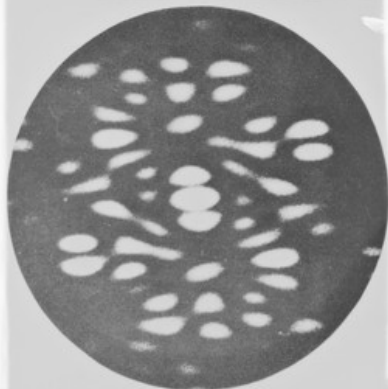
Image source should be attributed as specified in the full catalogue record. If no source is given the image should be attributed to Wellcome Collection.



Wellcome Collection
183 Euston Road
London NW1 2BE UK
T +44 (0)20 7611 8722
E library@wellcomecollection.org
<https://wellcomecollection.org>



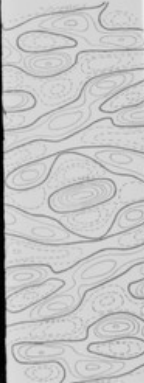
Optical transform of the hypothetical arrangement of six atoms as used for the calculations in Appendix I.



Optical transform of two centrosymmetrically-related units equivalent to the real part of the transform shown



of 61(i) for case of centrosymmetrically-related units



of 62(i) for case of centrosymmetrically-related units