

Copy of a printed optical diffraction image referenced as "Lipson and Taylor I"

Contributors

Fuller, Watson, 1935-

Publication/Creation

January 1965

Persistent URL

<https://wellcomecollection.org/works/yv5d9e9v>

License and attribution

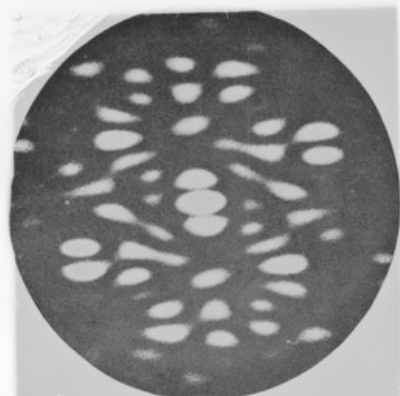
You have permission to make copies of this work under a Creative Commons, Attribution, Non-commercial license.

Non-commercial use includes private study, academic research, teaching, and other activities that are not primarily intended for, or directed towards, commercial advantage or private monetary compensation. See the Legal Code for further information.

Image source should be attributed as specified in the full catalogue record. If no source is given the image should be attributed to Wellcome Collection.



Wellcome Collection
183 Euston Road
London NW1 2BE UK
T +44 (0)20 7611 8722
E library@wellcomecollection.org
<https://wellcomecollection.org>



3 Repeat of 2 (for ease of comparison). The two centrosymmetrically-related units are now regarded as the contents of a single unit cell

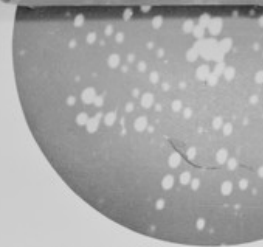
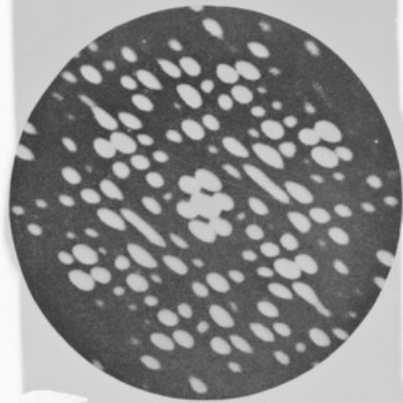


FIG. 5 Optical transform of four as 68(i). (The mask used is shown)

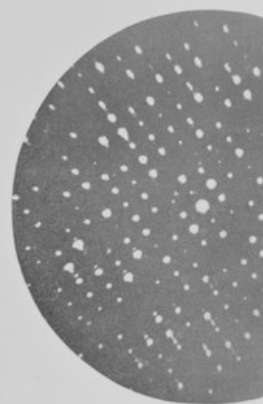


FIG. 6 Optical transform of man (The mask used is shown)