

Series of printed optical diffraction images referenced as "Optical diffr. from slits."

Contributors

Fuller, Watson, 1935-

Publication/Creation

January 1965

Persistent URL

<https://wellcomecollection.org/works/njmwdfsu>

License and attribution

You have permission to make copies of this work under a Creative Commons, Attribution, Non-commercial license.

Non-commercial use includes private study, academic research, teaching, and other activities that are not primarily intended for, or directed towards, commercial advantage or private monetary compensation. See the Legal Code for further information.

Image source should be attributed as specified in the full catalogue record. If no source is given the image should be attributed to Wellcome Collection.



Wellcome Collection
183 Euston Road
London NW1 2BE UK
T +44 (0)20 7611 8722
E library@wellcomecollection.org
<https://wellcomecollection.org>



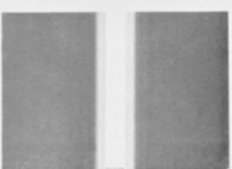
(a) Point source and circular aperture, as shown. (b) Slit source and slit aperture of same width as rectangular aperture.



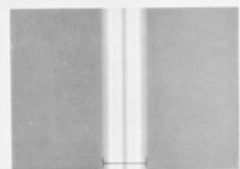
(a) Point source and circular obstacle. (b) Point source and small circular aperture. (c) Point source and large circular aperture.



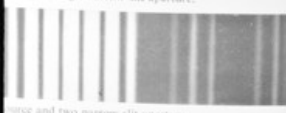
(d) Slit source and single narrow slit aperture.



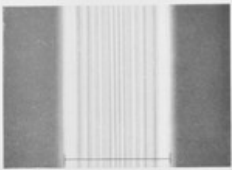
(f) Slit source and very narrow slit aperture.



(e) Slit source and slightly wider slit aperture.



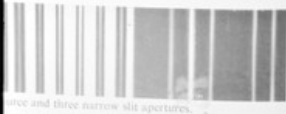
(g) Slit source and two narrow slit apertures.



(j) Slit source and very wide slit aperture.



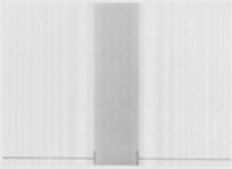
(g) Slit source and straight edge.



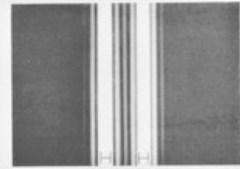
(h) Slit source and three narrow slit apertures.



(i) Slit source and four narrow slit apertures.



(h) Slit source and thin wire.



(i) Slit source and two narrow slit apertures.



(k) Slit source and five narrow slit apertures.

In (d) - (i) inclusive the positions of the geometrical shadows of the diffracting screens are indicated at the bottom of the patterns.

PLATE III. FRESNEL DIFFRACTION PATTERNS

