

Copy of a printed diagram referenced as "Abbe theory of microscopes"

Contributors

Fuller, Watson, 1935-

Publication/Creation

November 1963

Persistent URL

<https://wellcomecollection.org/works/q88qfsq8>

License and attribution

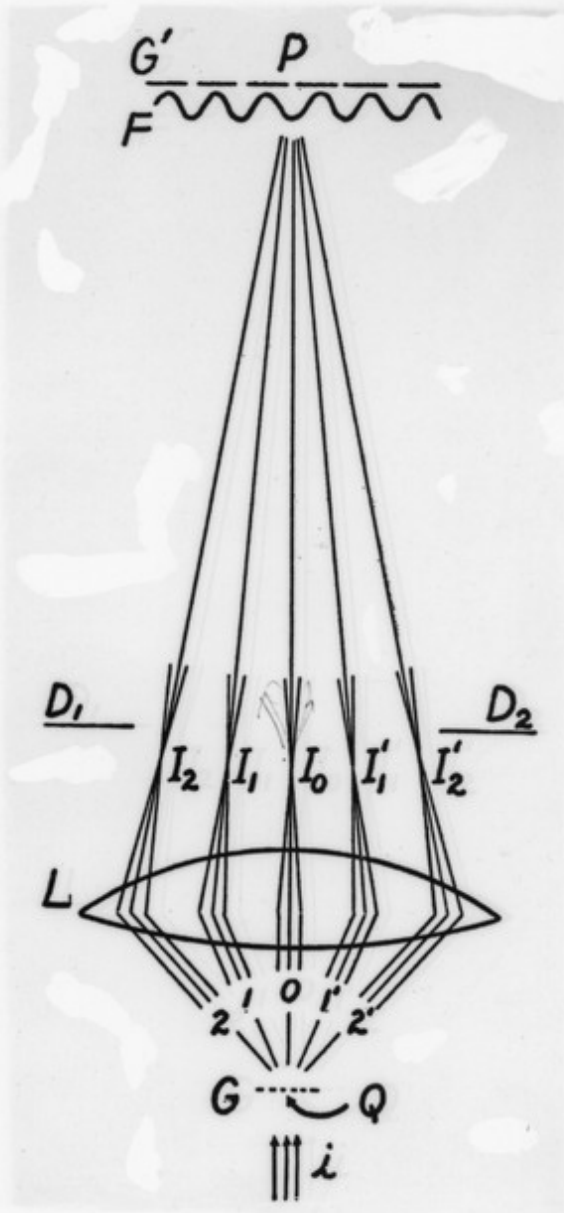
You have permission to make copies of this work under a Creative Commons, Attribution, Non-commercial license.

Non-commercial use includes private study, academic research, teaching, and other activities that are not primarily intended for, or directed towards, commercial advantage or private monetary compensation. See the Legal Code for further information.

Image source should be attributed as specified in the full catalogue record. If no source is given the image should be attributed to Wellcome Collection.



Wellcome Collection
183 Euston Road
London NW1 2BE UK
T +44 (0)20 7611 8722
E library@wellcomecollection.org
<https://wellcomecollection.org>



el beam of monoc
pendicularly from
the beam i , the
transparent stri
all be in the sam
answers the question
of the grating c
be resolved, upon
not the beams
the grating pass th
fail to pass.

ing will form the
e beams of first o
of second order,
ese beams, being
ocus in the upper
e objective, that is
 I_0, I_1 , etc., are pri
in monochromati
urce which is to
or a line parallel
at infinity. Or, if
oint, a collimating

ral transparent s
on t
the
om
ept

ory is that we may regard the image, G , of the grating as pattern, formed by interference of the disturbances coming