

Autoradiograph image referenced as "Starch gel electrophoresis autoradiography of transferrins (Smithies)"

Contributors

Gratzer, W. B. (Walter Bruno), 1932-

Publication/Creation

February 1963

Persistent URL

<https://wellcomecollection.org/works/cbc6akkb>

License and attribution

You have permission to make copies of this work under a Creative Commons, Attribution, Non-commercial license.

Non-commercial use includes private study, academic research, teaching, and other activities that are not primarily intended for, or directed towards, commercial advantage or private monetary compensation. See the Legal Code for further information.

Image source should be attributed as specified in the full catalogue record. If no source is given the image should be attributed to Wellcome Collection.



Wellcome Collection
183 Euston Road
London NW1 2BE UK
T +44 (0)20 7611 8722
E library@wellcomecollection.org
<https://wellcomecollection.org>

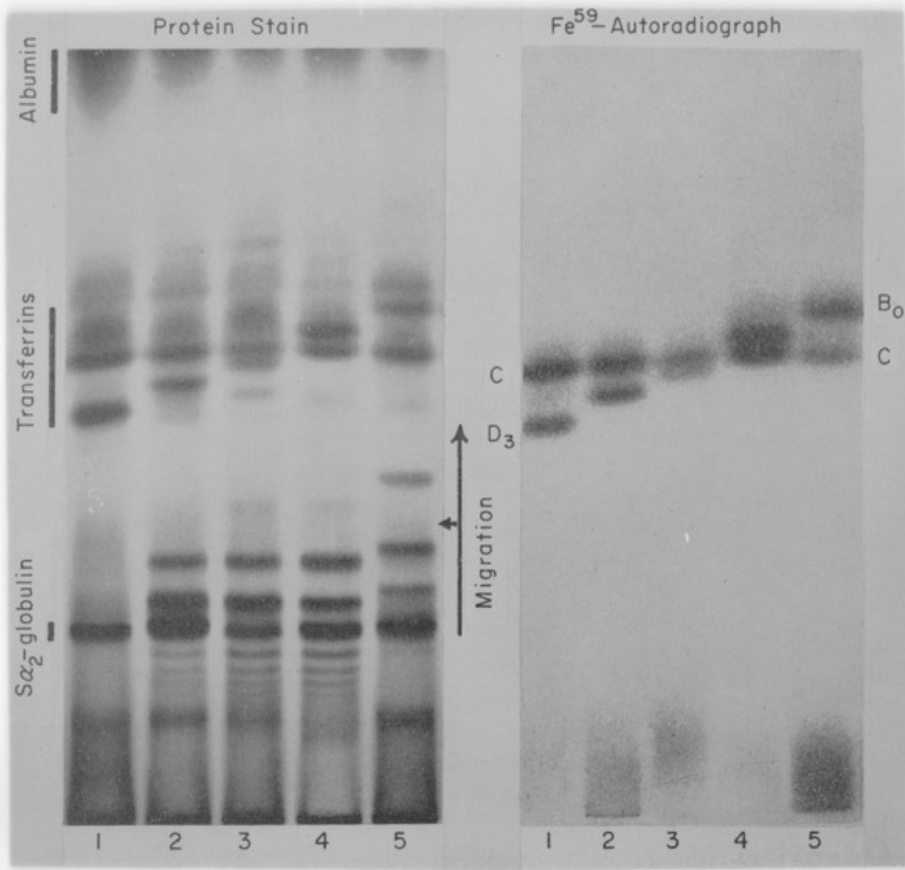


FIG. 11. The results of a vertical starch-gel electrophoresis experiment with five Fe⁵⁹-labeled sheep erythrocyte hemoglobins from individuals presumed to be heterozygous for transferrin genes (Gallucci et al., 1970). The left-hand photograph shows the protein bands migrating from the sample slots to the albumin. The right-hand photo-

... and B₀C. [S...]
 ... at the time
 ... personal comm...
 ... transferrins D₁ and I...
 ... Smithies, un...
 ... in (left hand...
 ... radiograph sh...
 ... found to the...
 ... they are...
 ... insertion



grammatic re...
 phoresis exper...
 ver Smithies an...
 diagram. Com...
 serum is illu...
 100 of pro...