

Diagram referenced as "Tiselius electrophoresis apparatus"

Contributors

Gratzer, W. B. (Walter Bruno), 1932-

Publication/Creation

February 1963

Persistent URL

<https://wellcomecollection.org/works/v9uytv72>

License and attribution

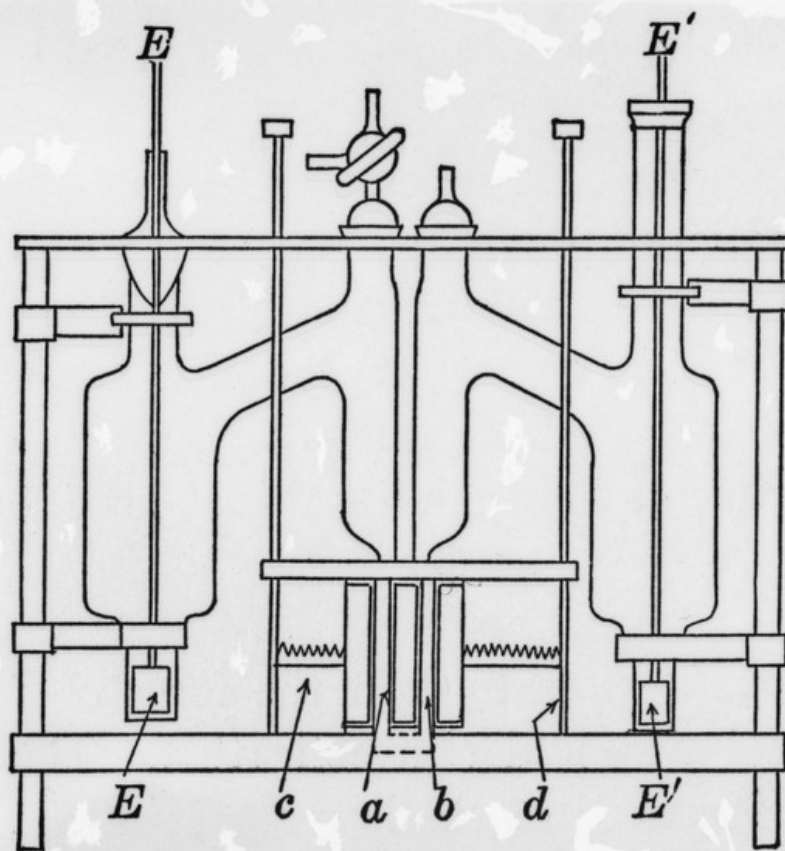
You have permission to make copies of this work under a Creative Commons, Attribution, Non-commercial license.

Non-commercial use includes private study, academic research, teaching, and other activities that are not primarily intended for, or directed towards, commercial advantage or private monetary compensation. See the Legal Code for further information.

Image source should be attributed as specified in the full catalogue record. If no source is given the image should be attributed to Wellcome Collection.



Wellcome Collection
183 Euston Road
London NW1 2BE UK
T +44 (0)20 7611 8722
E library@wellcomecollection.org
<https://wellcomecollection.org>



nical de
 protein
 en a cer
 articula
 action
 ts isolat
 e, the p
 n half
 n soluti
 electr
 ne as t
 Sharp
 n soluti
 ined.
 re 3 sh