

Copy of a printed graph referenced as "Sedimentation. Schlieren photograph showing multiple components"

Contributors

Gratzer, W. B. (Walter Bruno), 1932-

Publication/Creation

February 1963

Persistent URL

<https://wellcomecollection.org/works/yz75kuxn>

License and attribution

You have permission to make copies of this work under a Creative Commons, Attribution, Non-commercial license.

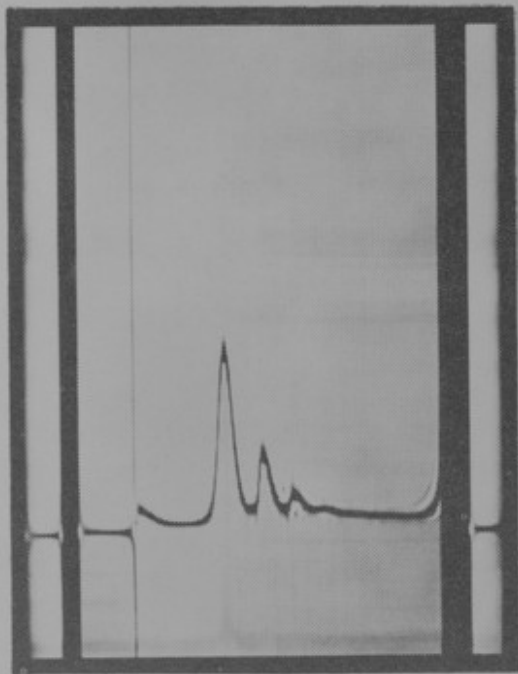
Non-commercial use includes private study, academic research, teaching, and other activities that are not primarily intended for, or directed towards, commercial advantage or private monetary compensation. See the Legal Code for further information.

Image source should be attributed as specified in the full catalogue record. If no source is given the image should be attributed to Wellcome Collection.



Wellcome Collection
183 Euston Road
London NW1 2BE UK
T +44 (0)20 7611 8722
E library@wellcomecollection.org
<https://wellcomecollection.org>

Schlieren pattern using the
approach-to-equilibrium
method of Archibald



Multiple schlieren peaks show
presence of several
sedimenting components

Banding of DNA containing N_{14} and N_{15}
by the density gradient method