

Diagram referenced as "Polypeptide helices"

Contributors

Gratzer, W. B. (Walter Bruno), 1932-

Publication/Creation

February 1963

Persistent URL

<https://wellcomecollection.org/works/j8khwzs4>

License and attribution

You have permission to make copies of this work under a Creative Commons, Attribution, Non-commercial license.

Non-commercial use includes private study, academic research, teaching, and other activities that are not primarily intended for, or directed towards, commercial advantage or private monetary compensation. See the Legal Code for further information.

Image source should be attributed as specified in the full catalogue record. If no source is given the image should be attributed to Wellcome Collection.



Wellcome Collection
183 Euston Road
London NW1 2BE UK
T +44 (0)20 7611 8722
E library@wellcomecollection.org
<https://wellcomecollection.org>

per turn = 4.3

0
14
1.94
0.13

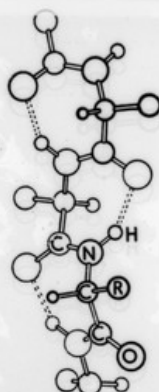
of residues per turn = 4.3

0
0.90
2.21
0.40
-0.39
1.13
1.90
0.14

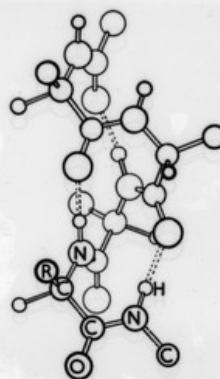
2.80 Å
10.5°

is in which position 1 for the β -carbon

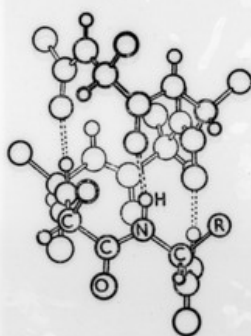
is named as 4.4₁₆. Since it has a 16-
4 family (Fig. 4.3). A drawing is
shown in more detail by Low and
coordinates for two slightly different
4.7. These authors have described
atomic coordinates of these and other



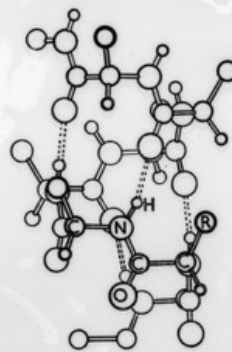
The 2.2₇ helix (left-hand spiral, D residues) (Donohue, 1953).



The 3.0₁₆ helix (left-hand spiral, D residues) (Donohue, 1953).



The 4.4₁₆ (π) helix (left-hand spiral, D residues) (Donohue, 1953).



The 4.3₁₄ helix (left-hand spiral, L residues) (Donohue, 1953).