

Copy of a printed cellular drawing referenced as "Cellular interrelationships in the lymph node"

Contributors

Coombes, Dr.

Publication/Creation

October 1962

Persistent URL

<https://wellcomecollection.org/works/usum5r6h>

License and attribution

You have permission to make copies of this work under a Creative Commons, Attribution, Non-commercial license.

Non-commercial use includes private study, academic research, teaching, and other activities that are not primarily intended for, or directed towards, commercial advantage or private monetary compensation. See the Legal Code for further information.

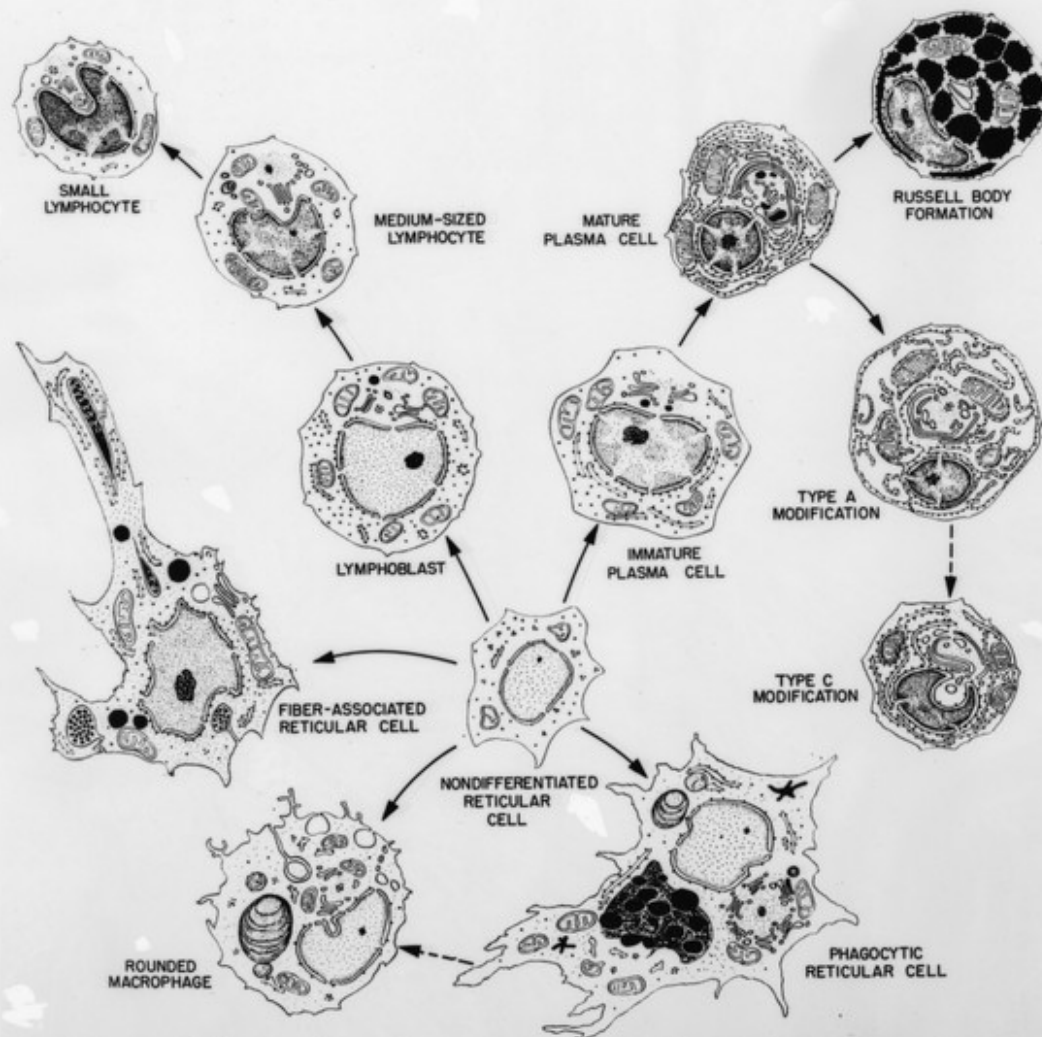
Image source should be attributed as specified in the full catalogue record. If no source is given the image should be attributed to Wellcome Collection.



Wellcome Collection
183 Euston Road
London NW1 2BE UK
T +44 (0)20 7611 8722
E library@wellcomecollection.org
<https://wellcomecollection.org>

ance. The cytoplasm contained many vacuoles of varied sizes most of which were empty. The vacuoles reached their

(fig. 1). As is true with features seen with the light microscope, the ultrastructural characteristics did not permit sharp subdivision of these cells into develop-



Cellular interrelationships in the lymph node. Although the cellular transformations shown in this figure are indicated by the arrows to be unidirectional, the author recognizes that a purely morphological study does not reveal direction of change with certainty and that some of the transformations shown may move in the opposite direction also.