

Copy of a printed diagram of a microscope image referenced as "T. Liver"

Contributors

Richards, E. G. (Edward Graham)

Publication/Creation

April 1961

Persistent URL

<https://wellcomecollection.org/works/vxg4w737>

License and attribution

You have permission to make copies of this work under a Creative Commons, Attribution, Non-commercial license.

Non-commercial use includes private study, academic research, teaching, and other activities that are not primarily intended for, or directed towards, commercial advantage or private monetary compensation. See the Legal Code for further information.

Image source should be attributed as specified in the full catalogue record. If no source is given the image should be attributed to Wellcome Collection.



Wellcome Collection
183 Euston Road
London NW1 2BE UK
T +44 (0)20 7611 8722
E library@wellcomecollection.org
<https://wellcomecollection.org>

well defined processes and one often gets the two cell types (Fig. 368). The impression that the microphages introduced the living

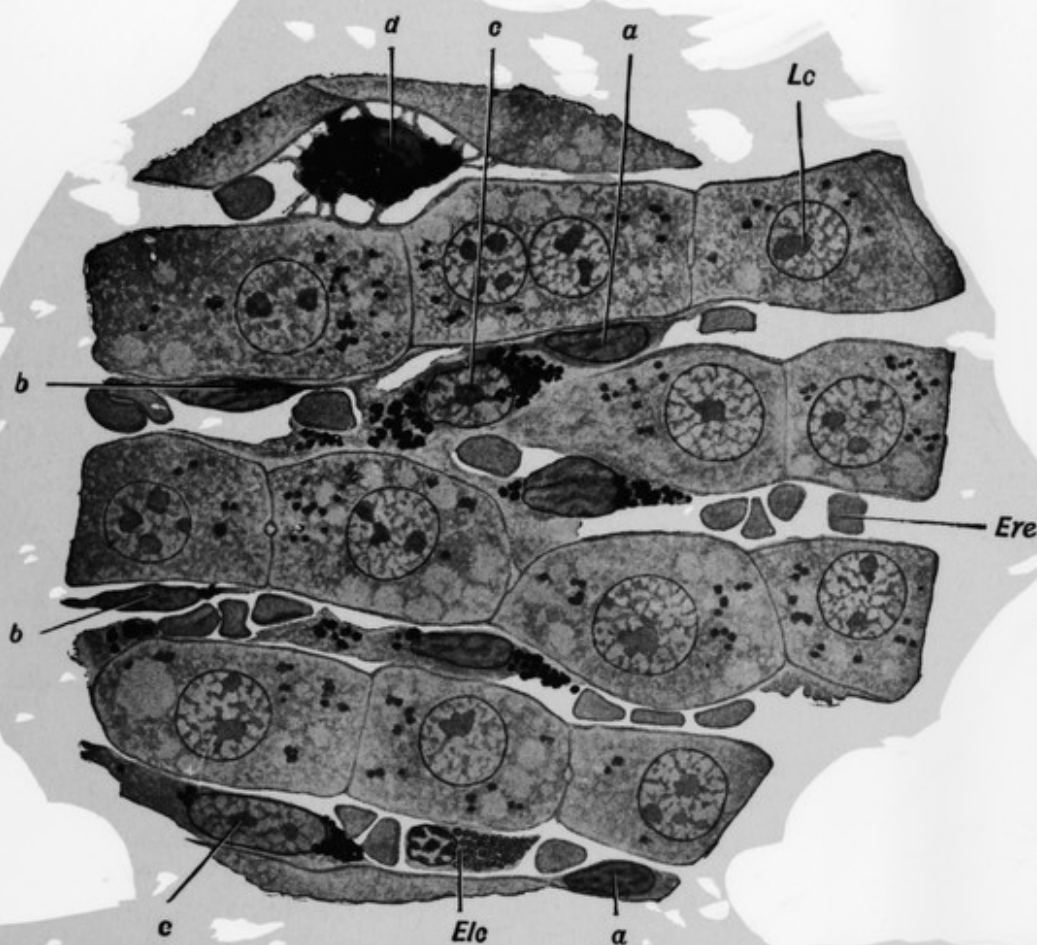


Fig. 368. Liver of rabbit, injected intravenously with India ink: *Lc*, Liver cell; *Erc*, erythrocyte in lumen of sinusoid; *Elc*, eosinophil leukocyte; *a*, cells of wall of sinusoid in resting condition; *d*, stellate cell of Kupffer; *b* and *c*, transitions from *a* to *d*. Hematoxylin-eosin-azure II stain. (A.A.M.)