

**X-ray diffraction exposure of lithium (Li) salt C-type DNA referenced as "F1145 Li C (hex)"**

**Contributors**

Wilkins, Maurice Hugh Frederick, 1916-2004

**Publication/Creation**

April 1958

**Persistent URL**

<https://wellcomecollection.org/works/ddhnz3hd>

**License and attribution**

You have permission to make copies of this work under a Creative Commons, Attribution, Non-commercial license.

Non-commercial use includes private study, academic research, teaching, and other activities that are not primarily intended for, or directed towards, commercial advantage or private monetary compensation. See the Legal Code for further information.

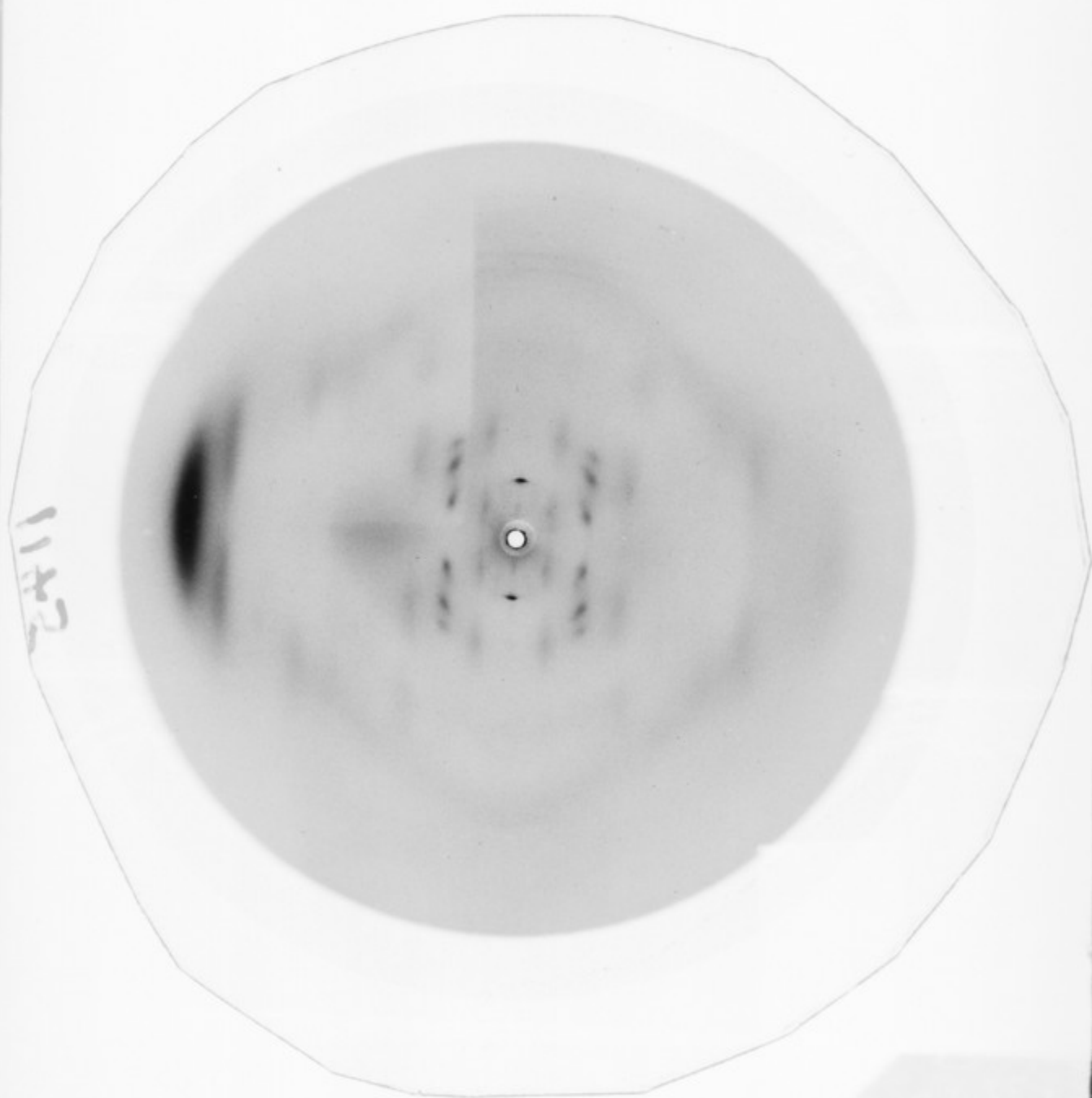
Image source should be attributed as specified in the full catalogue record. If no source is given the image should be attributed to Wellcome Collection.



Wellcome Collection  
183 Euston Road  
London NW1 2BE UK  
T +44 (0)20 7611 8722  
E [library@wellcomecollection.org](mailto:library@wellcomecollection.org)  
<https://wellcomecollection.org>



PNP5



1142