

Copy of printed microscope image referenced as "Electron micrograph of fibres and cells in 72 day old culture of chick embryo skin"

Contributors

Randall, J. T. (John Turton), 1905-1984

Publication/Creation

November 1952

Persistent URL

<https://wellcomecollection.org/works/s7f22abs>

License and attribution

You have permission to make copies of this work under a Creative Commons, Attribution, Non-commercial license.

Non-commercial use includes private study, academic research, teaching, and other activities that are not primarily intended for, or directed towards, commercial advantage or private monetary compensation. See the Legal Code for further information.

Image source should be attributed as specified in the full catalogue record. If no source is given the image should be attributed to Wellcome Collection.



Wellcome Collection
183 Euston Road
London NW1 2BE UK
T +44 (0)20 7611 8722
E library@wellcomecollection.org
<https://wellcomecollection.org>

is commonly found in these young, twenty-four-hour-old cultures. After seventy-two hours, the number of fibers associated with the cell has increased considerably (Figure 55). The kind of density along the cell margin ("A" in Figure 55) and sometimes occurring at numerous other points in the cytoplasm, is referred to as stress fibers or tonofibrils. They are common in these cells.

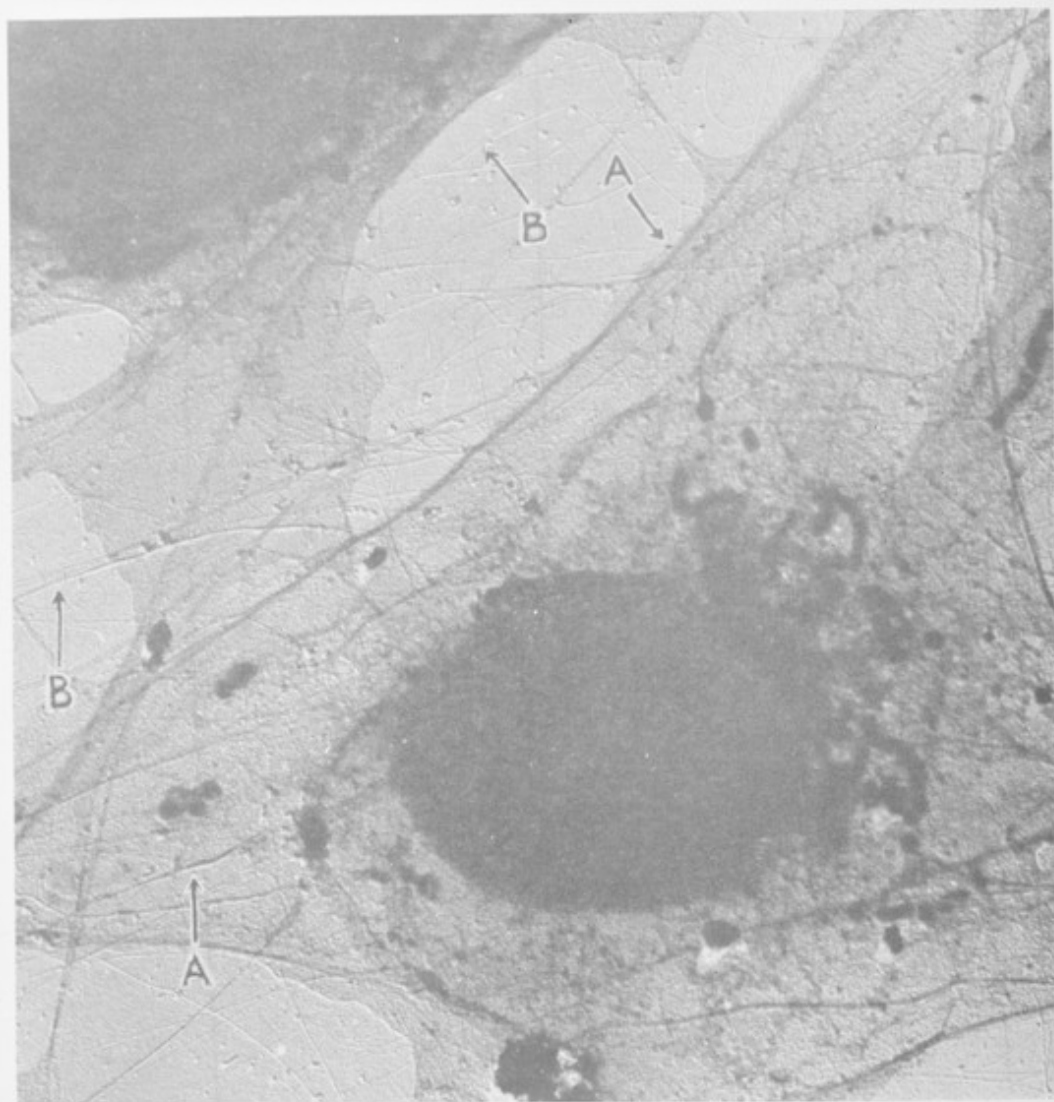


FIGURE 55. Electron micrograph of fibers and cells in 72-hour-old culture of chick embryo skin. "A" refers to tonofibril or fibroglia fibers; "B," collagen fibers. Mag. $\times 4,500$.