

**Copy of printed microscope image referenced as "T.S. L.P. Human muscle
Max and Bloom"**

Contributors

North, Anthony Charles Thomas

Publication/Creation

June 1952

Persistent URL

<https://wellcomecollection.org/works/bejgyqhs>

License and attribution

You have permission to make copies of this work under a Creative Commons, Attribution, Non-commercial license.

Non-commercial use includes private study, academic research, teaching, and other activities that are not primarily intended for, or directed towards, commercial advantage or private monetary compensation. See the Legal Code for further information.

Image source should be attributed as specified in the full catalogue record. If no source is given the image should be attributed to Wellcome Collection.



Wellcome Collection
183 Euston Road
London NW1 2BE UK
T +44 (0)20 7611 8722
E library@wellcomecollection.org
<https://wellcomecollection.org>

Organoids and Inclusions.—The sarcoplasm of muscle contains fat droplets, pigment and lipoid granules, and with these inclusions, the sarcoplasm contains mitochondria.

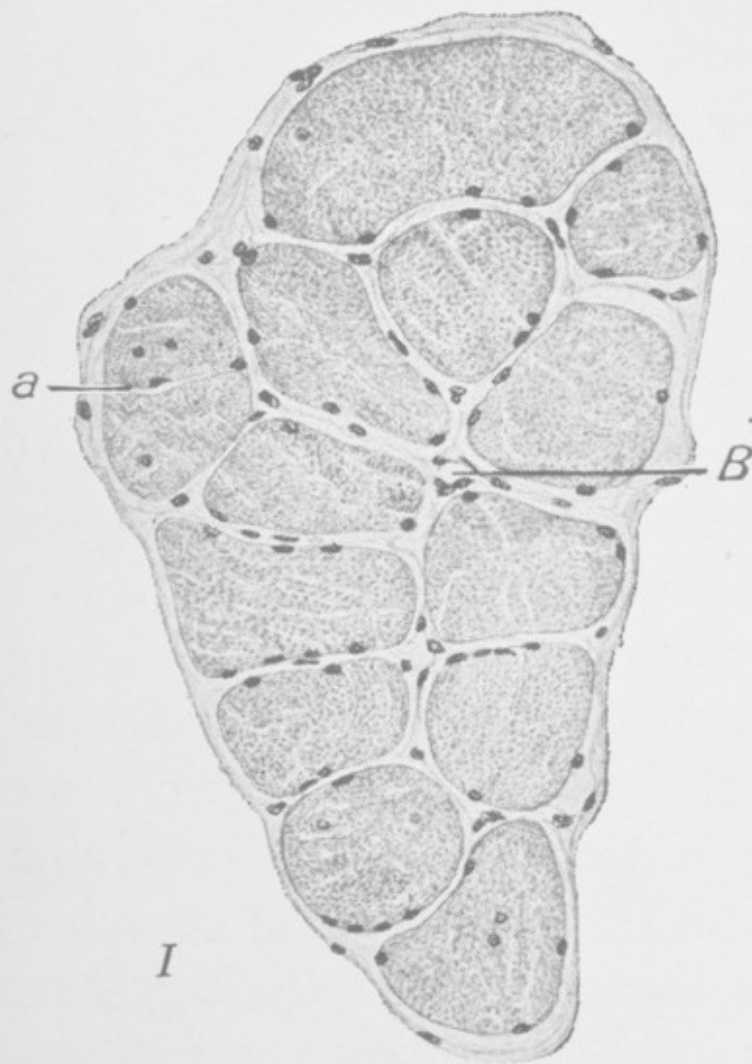


Fig. 132.—Cross section of two muscles of the same man: triceps brachii muscle; *a*, a fiber with central nuclei; *B*, blood vessel. *II*, triceps brachii muscle with Cohnheim's fields; *k*, dense portion of a fiber; *A*, artery; *C*, capillary.