

**Copy of a printed microscope image referenced as "T.S. L.P. Human muscle Max and Bloon"**

**Contributors**

North, Anthony Charles Thomas

**Publication/Creation**

June 1952

**Persistent URL**

<https://wellcomecollection.org/works/yqazvvg3>

**License and attribution**

You have permission to make copies of this work under a Creative Commons, Attribution, Non-commercial license.

Non-commercial use includes private study, academic research, teaching, and other activities that are not primarily intended for, or directed towards, commercial advantage or private monetary compensation. See the Legal Code for further information.

Image source should be attributed as specified in the full catalogue record. If no source is given the image should be attributed to Wellcome Collection.



Wellcome Collection  
183 Euston Road  
London NW1 2BE UK  
T +44 (0)20 7611 8722  
E [library@wellcomecollection.org](mailto:library@wellcomecollection.org)  
<https://wellcomecollection.org>

115



Fig. 132.—Cross section of two muscles of the same man treated in the same way. *I*, Gastrocnemius muscle; *a*, a fiber with central nuclei; *B*, blood vessel. *II*, An ocular muscle; *n*, normal fiber with Cohnheim's fields; *k*, dense portion of a fiber; *A*, artery; *C*, capillary. 110 X. After Schaffer.

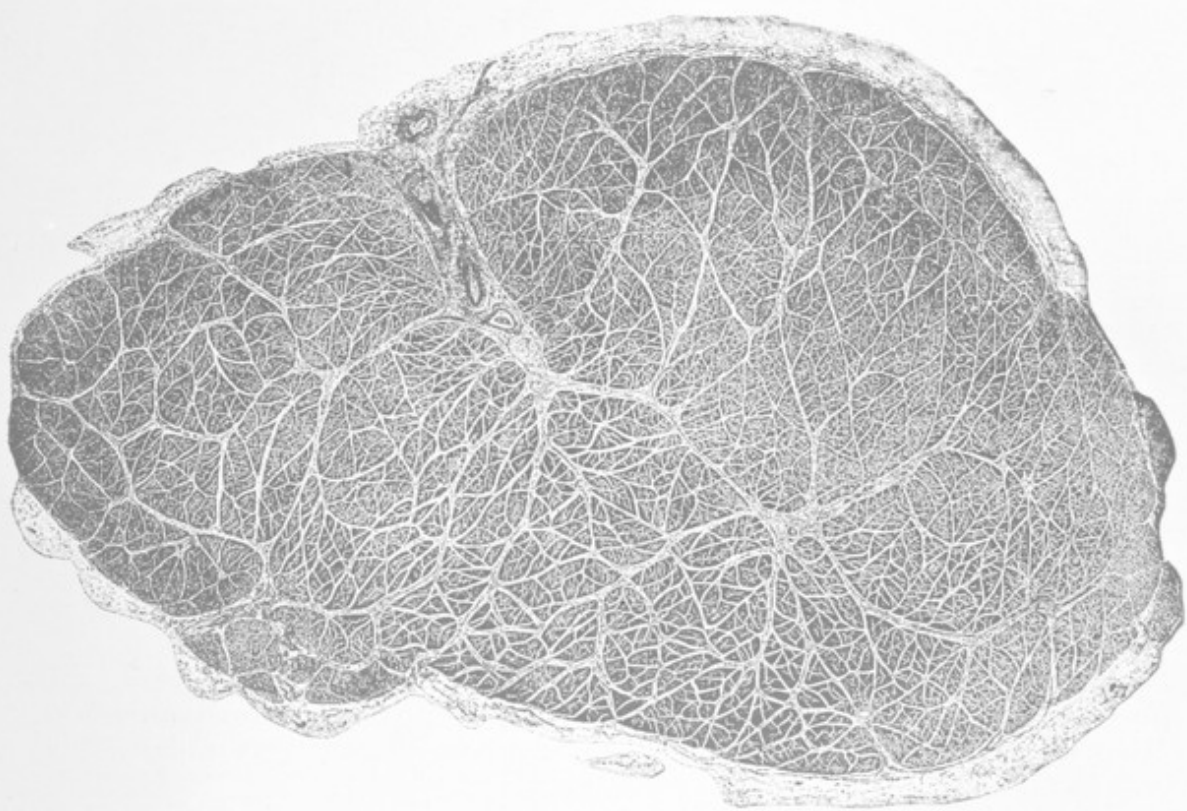


Fig. 133.—Cross section through the sartorius muscle of man showing the subdivision into bundles of various sizes by connective tissue. 4 X. Photograph by Müller, from Heidenhain.

osomes. The latter occur in both the I and the A disks, and their exact nature is undecided. As the sarcosomes and mitochondria have been demonstrated in preparations made with different technics, the question is unsettled as to possible