

Copy of a photographic print referenced as "Accelerated flow apparatus"

Contributors

Gosling, Raymond George, 1926-

Publication/Creation

October 1949

Persistent URL

<https://wellcomecollection.org/works/xan9v7sb>

License and attribution

You have permission to make copies of this work under a Creative Commons, Attribution, Non-commercial license.

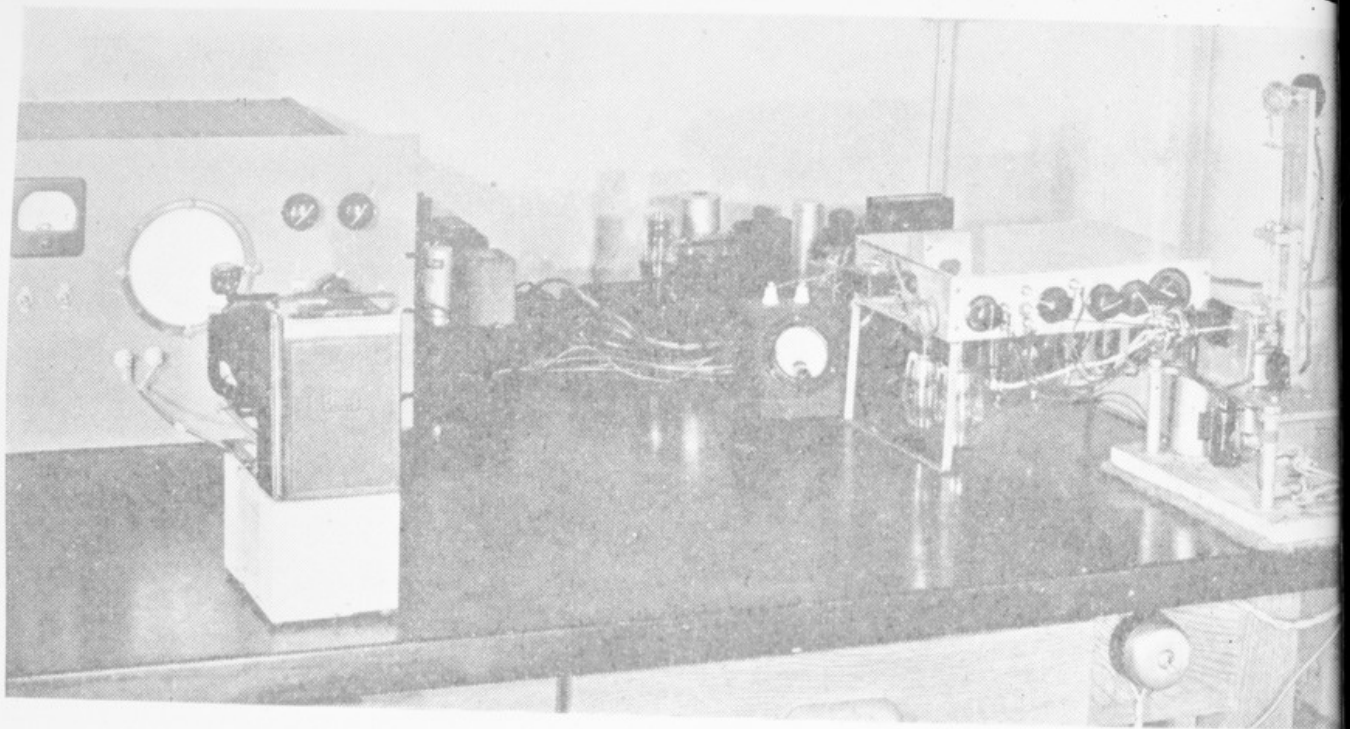
Non-commercial use includes private study, academic research, teaching, and other activities that are not primarily intended for, or directed towards, commercial advantage or private monetary compensation. See the Legal Code for further information.

Image source should be attributed as specified in the full catalogue record. If no source is given the image should be attributed to Wellcome Collection.



Wellcome Collection
183 Euston Road
London NW1 2BE UK
T +44 (0)20 7611 8722
E library@wellcomecollection.org
<https://wellcomecollection.org>

FIG. 22.



The complete apparatus for the accelerated flow method.

watt sound track exciter lamp, is held against the lens by strap to prevent any relative motion during a rapid discharge. The observation tube is connected to a two-way stop-cock.