

**Printed diagram captioned as "Drawing of the stages of spermatogenesis in guinea pigs"**

**Contributors**

Randall, J. T. (John Turton), 1905-1984

**Publication/Creation**

August 1949

**Persistent URL**

<https://wellcomecollection.org/works/c9jzqfgm>

**License and attribution**

You have permission to make copies of this work under a Creative Commons, Attribution, Non-commercial license.

Non-commercial use includes private study, academic research, teaching, and other activities that are not primarily intended for, or directed towards, commercial advantage or private monetary compensation. See the Legal Code for further information.

Image source should be attributed as specified in the full catalogue record. If no source is given the image should be attributed to Wellcome Collection.



Wellcome Collection  
183 Euston Road  
London NW1 2BE UK  
T +44 (0)20 7611 8722  
E [library@wellcomecollection.org](mailto:library@wellcomecollection.org)  
<https://wellcomecollection.org>

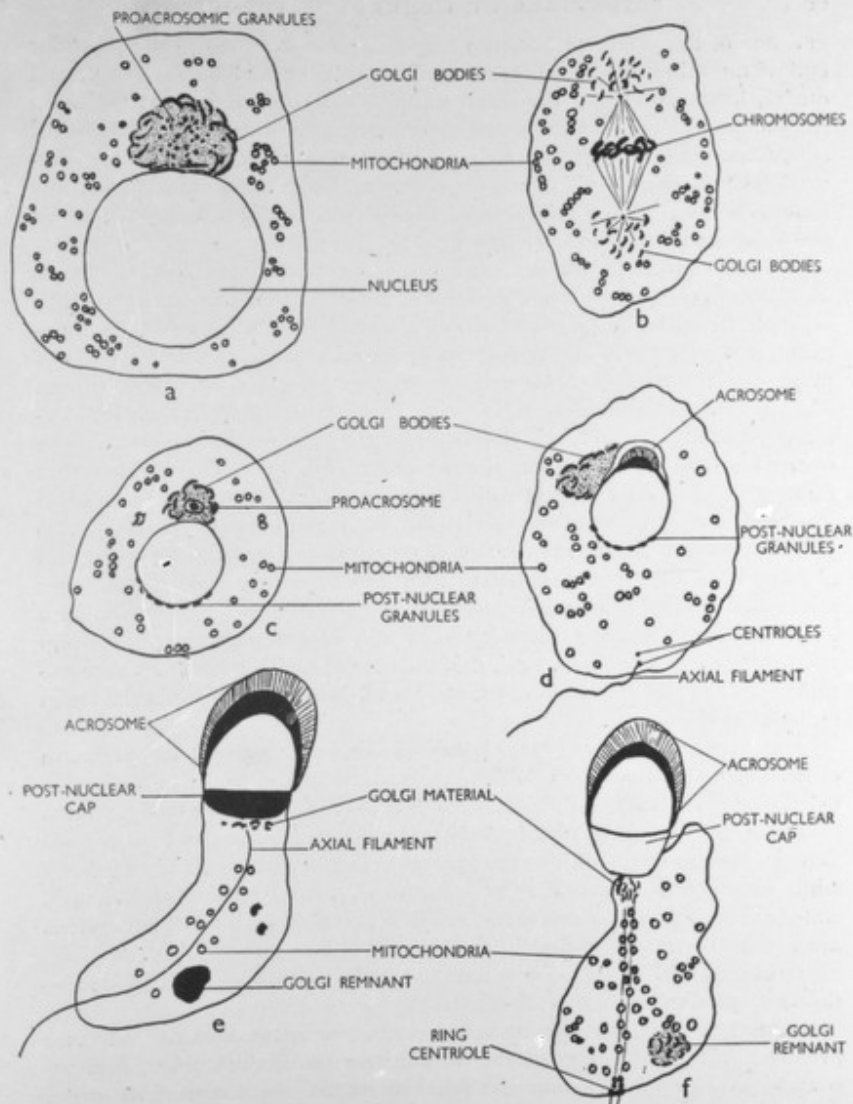


FIG. 34.—Stages of spermatogenesis of guinea-pig. a, primary spermatocyte. b, second spermatocyte; metaphase. c, young spermatid. d, older spermatid. e and f, stages of metamorphosis of spermatid. a-d and f after Gatenby and Woodger, redrawn and modified. c and d, the post-nuclear granules are included after drawings by Gatenby and Wigoder. e, after Gatenby and Wigoder, redrawn and modified.