

Printed diagram captioned as "Drawing of the stages of spermatogenesis in mammals"

Contributors

Randall, J. T. (John Turton), 1905-1984

Publication/Creation

August 1949

Persistent URL

<https://wellcomecollection.org/works/e3be2chy>

License and attribution

You have permission to make copies of this work under a Creative Commons, Attribution, Non-commercial license.

Non-commercial use includes private study, academic research, teaching, and other activities that are not primarily intended for, or directed towards, commercial advantage or private monetary compensation. See the Legal Code for further information.

Image source should be attributed as specified in the full catalogue record. If no source is given the image should be attributed to Wellcome Collection.

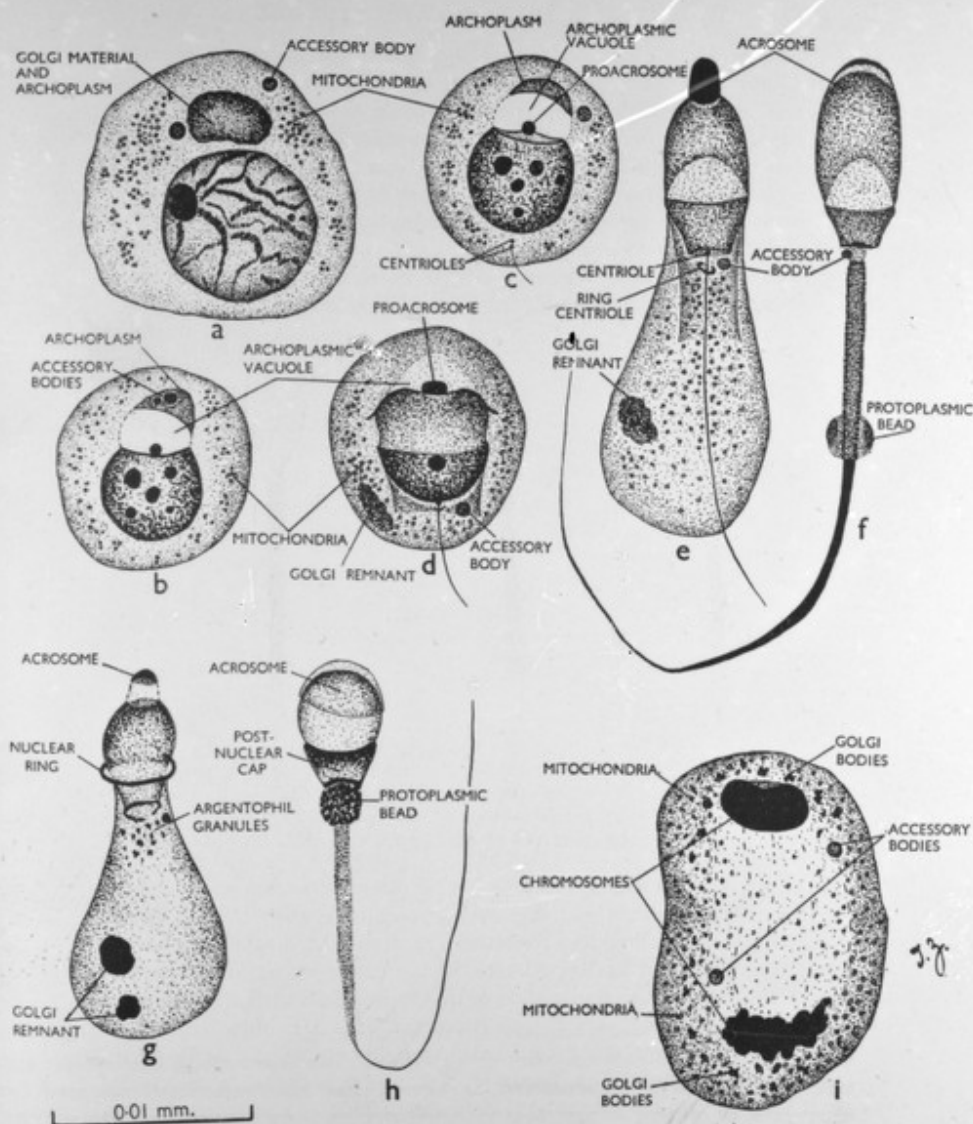


FIG. 35.—Stages of spermatogenesis of mammals. Original drawings. a, primary spermatocyte of sheep. b-d, spermatids of sheep. e, late spermatid of sheep. f, sperm from epididymis of sheep. g, late spermatid of dog. h, sperm from seminiferous tubule of dog. i, primary spermatocyte of sheep; telophase.