

Printed diagram of a transverse section of seminiferous tubule in a mammal referenced as "Mammalian sperm heads"

Contributors

Randall, J. T. (John Turton), 1905-1984

Publication/Creation

August 1949

Persistent URL

<https://wellcomecollection.org/works/g9fw356d>

License and attribution

You have permission to make copies of this work under a Creative Commons, Attribution, Non-commercial license.

Non-commercial use includes private study, academic research, teaching, and other activities that are not primarily intended for, or directed towards, commercial advantage or private monetary compensation. See the Legal Code for further information.

Image source should be attributed as specified in the full catalogue record. If no source is given the image should be attributed to Wellcome Collection.

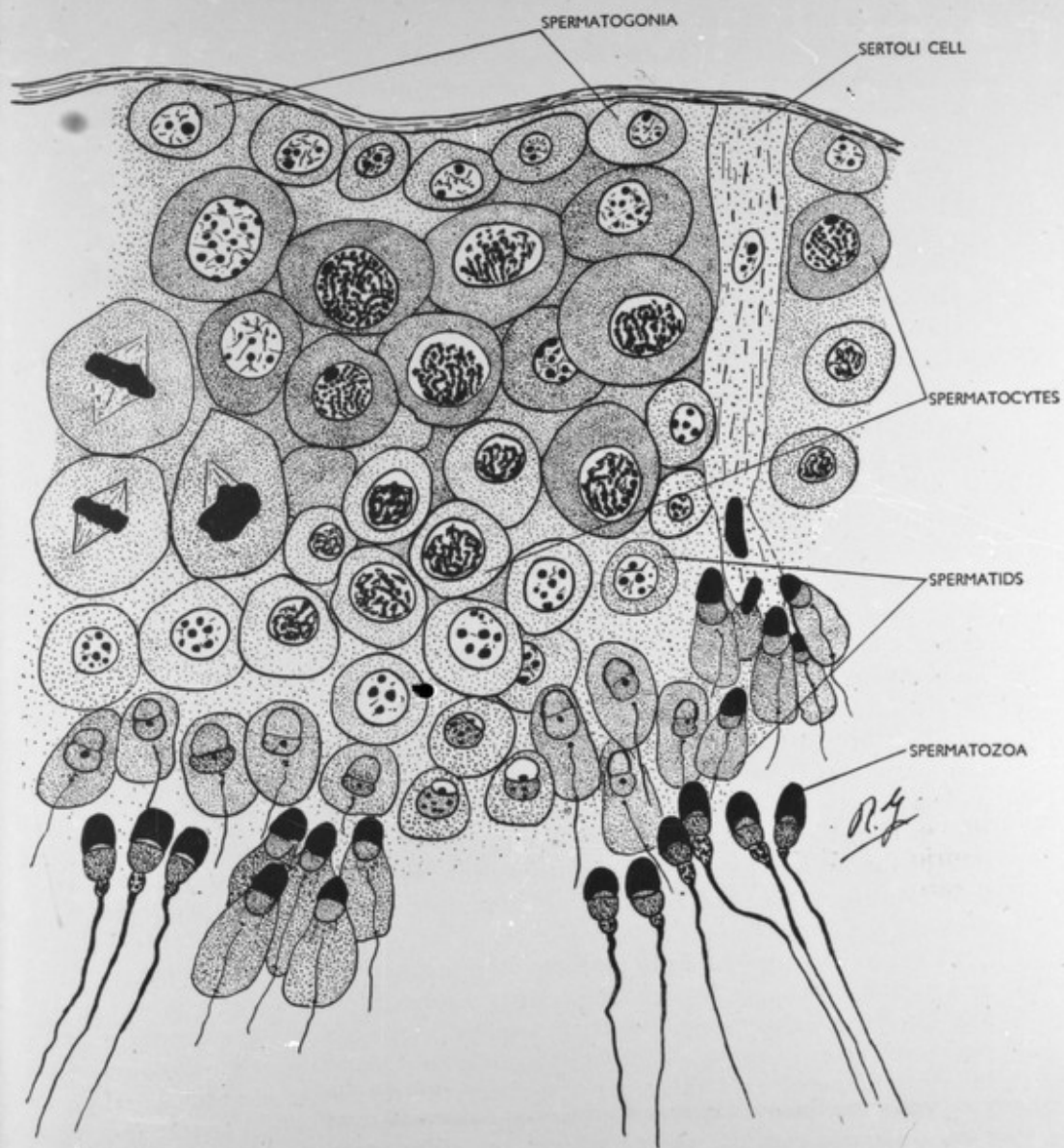


FIG. 33.—Drawing of a small part of a transverse section of a seminiferous tubule of a mammal, to show the stages of spermatogenesis. Semi-diagrammatic.