

## **Papers of M H F Wilkins: photographs of Biophysics Unit staff**

### **Contributors**

King's College London Biophysics Department

### **Publication/Creation**

1951-1953

### **Persistent URL**

<https://wellcomecollection.org/works/zhygarb5>

### **License and attribution**

You have permission to make copies of this work under a Creative Commons, Attribution, Non-commercial license.

Non-commercial use includes private study, academic research, teaching, and other activities that are not primarily intended for, or directed towards, commercial advantage or private monetary compensation. See the Legal Code for further information.

Image source should be attributed as specified in the full catalogue record. If no source is given the image should be attributed to Wellcome Collection.



Wellcome Collection  
183 Euston Road  
London NW1 2BE UK  
T +44 (0)20 7611 8722  
E [library@wellcomecollection.org](mailto:library@wellcomecollection.org)  
<https://wellcomecollection.org>

Photo of 1950 signed DNA fibres mounted  
by me on Flumpton was for X ray  
study with Gosling M.H.F.W.



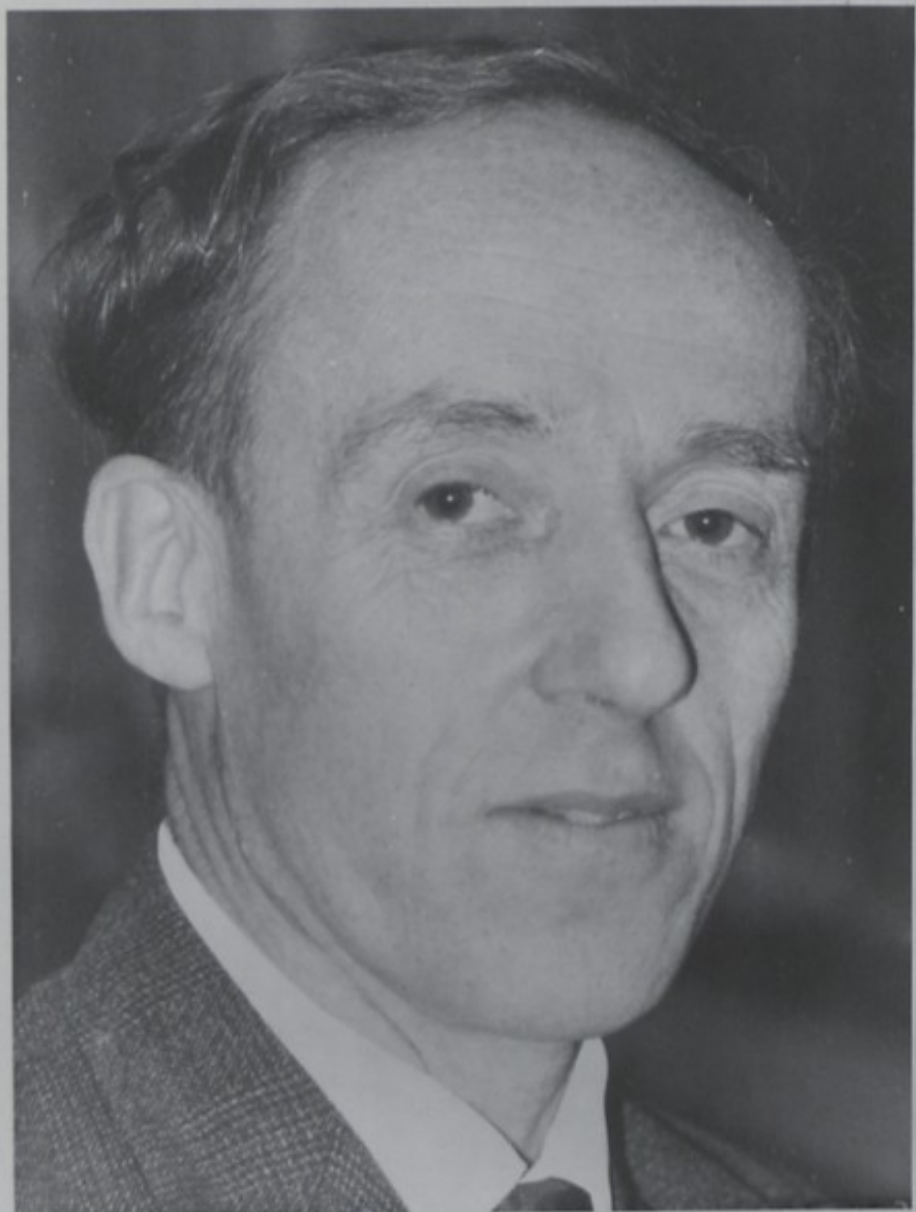


Gosling



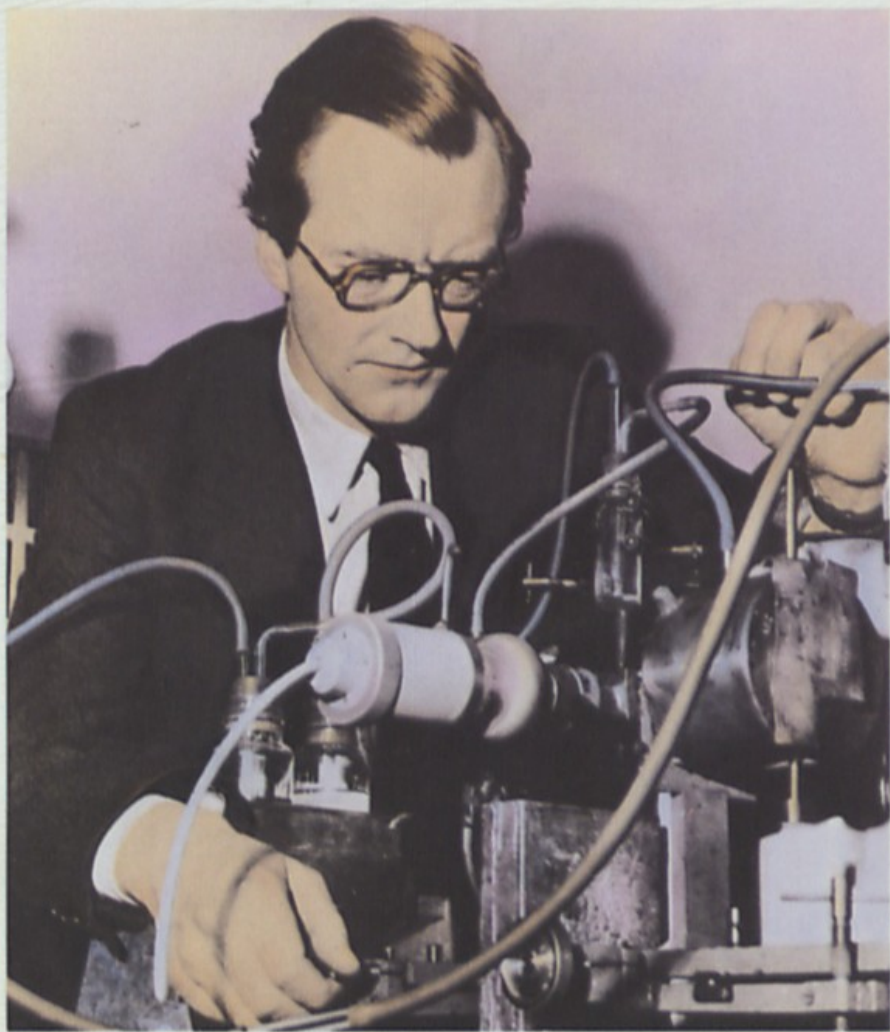




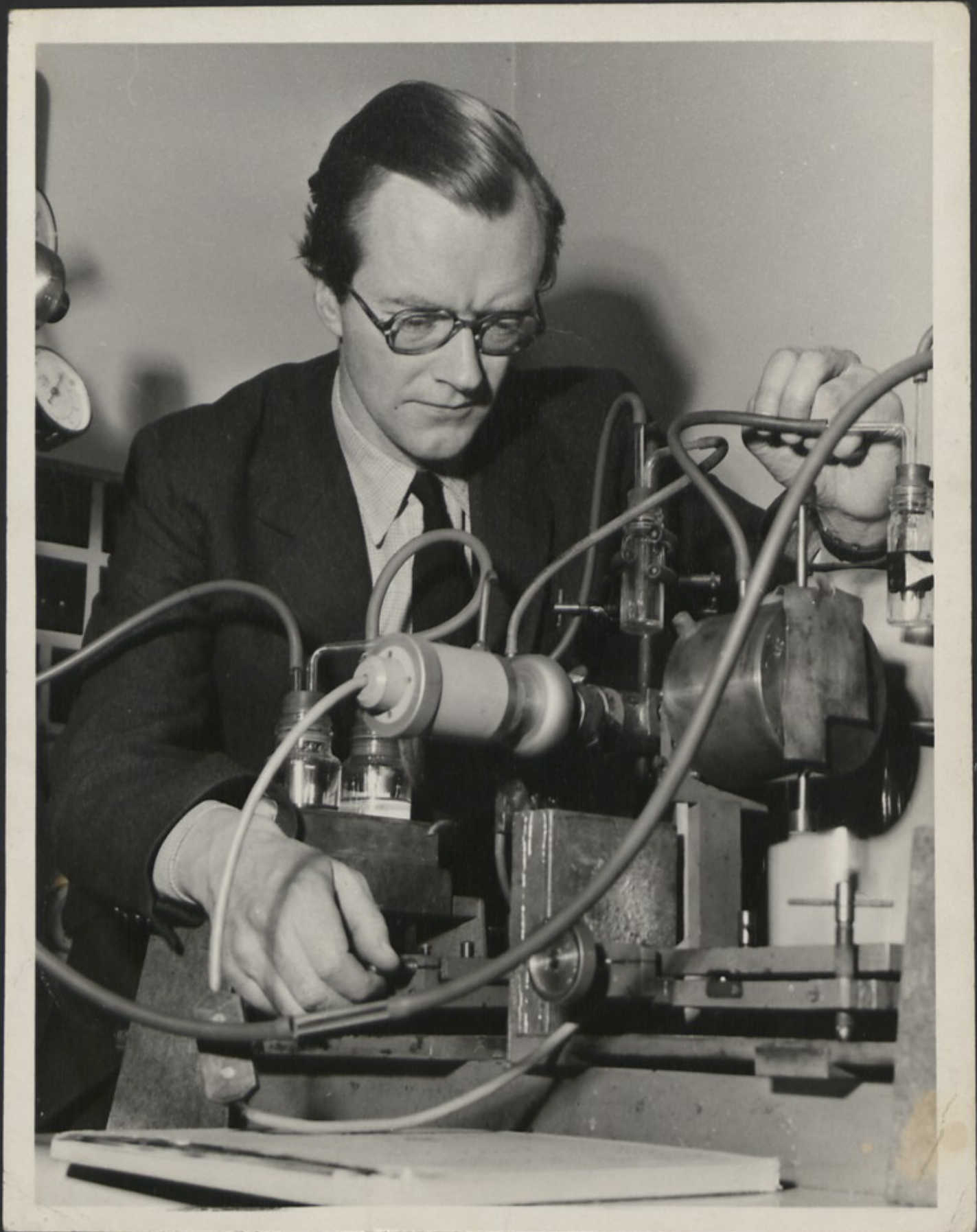


APR 20 1949

A. B. Stokes









Central Office  
of Information  
1955

Crown Copyright Reserved D109554

D109554

587

7567

