

**A clothed woman walking up to a wicker basket, picking it up and walking off with it. Collotype after Eadweard Muybridge, 1887.**

### **Contributors**

Muybridge, Eadweard, 1830-1904.  
University of Pennsylvania.

### **Publication/Creation**

[Philadelphia] : [University of Pennsylvania], 1887 ([Philadelphia] : [The Photo-gravure Company], 1887)

### **Persistent URL**

<https://wellcomecollection.org/works/bfguvyq8>

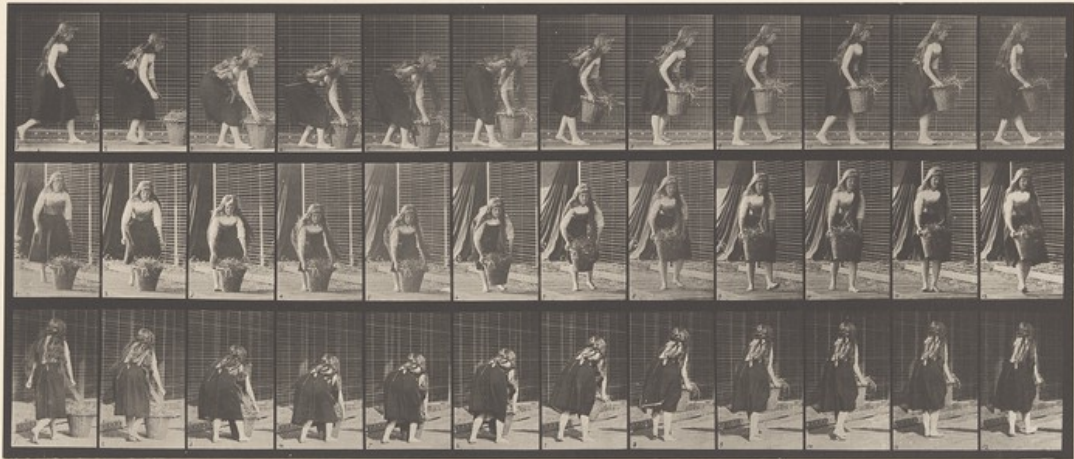
### **License and attribution**

This work has been identified as being free of known restrictions under copyright law, including all related and neighbouring rights and is being made available under the Creative Commons, Public Domain Mark.

You can copy, modify, distribute and perform the work, even for commercial purposes, without asking permission.

**wellcome  
collection**

Wellcome Collection  
183 Euston Road  
London NW1 2BE UK  
T +44 (0)20 7611 8722  
E [library@wellcomecollection.org](mailto:library@wellcomecollection.org)  
<https://wellcomecollection.org>



ANIMAL LOCOMOTION, PLATE 29

Copyright, 1887, by EDWARD MUYBRIDGE. All rights reserved.