

[Report of the Medical Officer of Health for Limehouse].

Contributors

Limehouse (London, England). Board of Works.

Publication/Creation

[1887]

Persistent URL

<https://wellcomecollection.org/works/y4gqwxu7>

Provider

London Metropolitan Archives

License and attribution

This material has been provided by City of London, London Metropolitan Archives where the originals may be consulted.

You have permission to make copies of this work under a Creative Commons, Attribution, Non-commercial license.

Non-commercial use includes private study, academic research, teaching, and other activities that are not primarily intended for, or directed towards, commercial advantage or private monetary compensation. See the Legal Code for further information.

Image source should be attributed as specified in the full catalogue record. If no source is given the image should be attributed to Wellcome Collection.



Wellcome Collection
183 Euston Road
London NW1 2BE UK
T +44 (0)20 7611 8722
E library@wellcomecollection.org
<https://wellcomecollection.org>



*Surveyor (Bridges)
Report at end of 1886*

BOARD OF WORKS

FOR THE

LIMEHOUSE DISTRICT.



STATEMENT OF ACCOUNTS, REPORTS, &c., from
Lady-day, 1886 to Lady-day, 1887.

BOARD OF WORKS

FOR THE

LIMEHOUSE DISTRICT,

1886-7.

Members for Limehouse.

- Mr. JAMES AMBROSE, 2, St. Paul's-road.
" JOHN BACK, 71, Three Colt-street.
" HENRY WILLIAM BAXTER, 803a, Commercial-road.
" JOHN HAYWOOD BOWLES, 141, Salmon-lane.
" HENRY CHAMBERS, Brunton's Wharf, Commercial-road.
" JOHN COLLINGBOURNE, 299, Burdett-road.
" THOMAS JAMES DIXON, 275, Burdett-road.
" SAMUEL JOHN FRIEND, 301, Burdett-road.
" WILLIAM BENSLEY HOPSON, 11, Church-row.
" BERNARD KOPPEL, 803, Commercial Road.
" SAMUEL LEWIS, 98, West India Dock Road.
" WILLIAM HENRY MITCHELL, 757, Commercial-road.
" JOSEPH MYERSCOUGH, 685, Commercial Road.
" WILLIAM PAGE, 70, Limehouse Causeway.
" EDWARD SMITH, 10, Wallwood-street.
" HENRY JOSEPH STEVENS, 154, Salmon-lane.
" JAMES WAGNER, 21, Limehouse Causeway.
" JOSEPH ROSS WALLER, Northey-street.
" HYMAN BEBELL WILLIAMS, 72, West India Dock Road.

Members for Ratcliff.

- Mr. JOHN ABBOTT, 619, Commercial-road.
" EDWIN AUGUSTUS CREER, 589, Commercial-road.
" JOHN SAMUEL CURTIS, 24, White Horse-street.
" HENRY EVANS, 3, Butcher-row.
" JAMES GREIG, Free Trade Wharf.
" FREDERICK HALLETT, 529, Commercial-road.
" JOHN GEORGE HARDING, 68, Broad-street.
" MILLNER HOLT, 107, Broad Street.
" THOMAS SMITH WATTS, 556, Commercial-road.

Members for Shadwell.

- Mr. FRANK ARLISS, 194, High Street.
" JOSEPH ARTHUR, 164, High Street.
" EDWARD HENRY PAGE, 199, High-street.
" EDWIN RUMBOLD, Short-street.
" CHARLES WARMAN, 480, Cable-street.
" EDWARD WEBER, Metropolitan Wharf.

Members for Wapping.

- Mr. ROBERT CARR, 1, West Pier.
" WILLIAM STRICKLING ELLWOOD, 5, East Pier.
" JOHN COLE GREGORY, Hermitage Wharf.
" GEORGE HENRY HEDGES, 137, High-street.
" RICHARD JOLLY, 277, High Street.
" WILLIAM SMITHER, Well-street.

JOHN ABBOTT, Esq., Represents the Board at the Metropolitan Board of Works.

Offices of the Board.

WHITE HORSE STREET, COMMERCIAL ROAD EAST.

Treasurer—WILLIAM FREDERICK NARRAWAY, Esq., LONDON JOINT STOCK BANK, Princes Street, Bank.

Clerk of the Board—MR. THOMAS WRAKE RATCLIFF,
District Board Offices, White Horse Street.

Surveyor—MR. CHARLES DUNCH, District Board Offices, White Horse Street.

Medical Officer of Health & Analyst—MR. GEORGE ARTHUR ROGERS
164, High Street, Shadwell.

Sanitary Inspectors.

For No. 1 DISTRICT—GEORGE HURLOCK, 35, Locksley Street, Limehouse.

For No. 2 DISTRICT—THOMAS STACE, 10, Red Lion Street, Wapping.

Superintendent of Cleansing and Watering—DANIEL EVERETT.

Office Clerk—FREDERICK WILLIAM MADDOCKS.

Assistant in Clerk's Office—HENRY EVERETT.

II. REVENUE AND OUTLAY ACCOUNT for the Year from Lady day, 1886
to Lady-day, 1887.

1. REVENUE AND OUTLAY GENERAL PURPOSES ACCOUNT.

2. DITTO SEWERS ACCOUNT.

III. PARISH OF LIMEHOUSE..... GENERAL PURPOSES ACCOUNT.

1. DITTO SEWERS ACCOUNT.

IV. HAMLET OF RATCLIFF..... GENERAL PURPOSES ACCOUNT.

1. DITTO SEWERS ACCOUNT.

V. PARISH OF SHADWELL..... GENERAL PURPOSES ACCOUNT.

1. DITTO SEWERS ACCOUNT.

VI. PARISH OF WAPPING GENERAL PURPOSES ACCOUNT.

1. DITTO SEWERS ACCOUNT.

2. STATEMENT OF LIABILITIES AND ASSETS.

3. DITTO OF CONTRACTS.

4. RETURN OF MONIES RAISED ON LOAN AT INTEREST.

5. LIST OF PROPERTIES BELONGING TO THE BOARD.

6. REPORT OF SURVEYOR.

No. 1.

BOARD OF WORKS FOR THE LIMEHOUSE DISTRICT.

Comprising the Parish of Limehouse, the Hamlet of Cliffe, and the Parishes of Shadwell and Wapping.

Revenue and Outlay from Lady-day, 1886, to Lady-day, 1887.

REVENUE.

	£	s.	d.
Balance brought forward	1,914	0	0
To Cash of the several Parishes upon Orders of Contribution, viz:—			
General Purposes	18,000	0	0
Sewers	1,100	0	0
	19,100	0	0
„ Ditto of ditto to meet precept of School Board for London	13,742	17	6
„ Ditto returned by School Board for London in consequence of reduction of assessment for 1886	299	12	1
	14,042	9	7
„ Ditto of the several Parishes to meet Precept of Metropolitan Board for Consolidated Rate	9,008	15	6
„ Ditto Revenue from all other sources, viz:—			
General Purposes	2,525	15	6
Sewers	29	16	3
	2,555	11	9
„ Ditto of Metropolitan Board, returned in consequence of reduction of Assessment for 1886 (carried forward)	227	16	3
„ Balance of Registration of Canal Boats Account (carried forward)	2	0	0
	£46,850	13	6

OUTLAY.

	£	s.	d.
Cash expended for General Purposes	20,306	14	3
„ Ditto ditto for Sewers	1,864	2	4
„ Ditto School Board for London—Amount of Precept	14,042	9	7
„ Ditto Metropolitan Board of Works—Amount of Precept	9,008	15	6
	1,523	19	10
Balance in hands of Treasurer	1,523	19	10
„ Ditto ditto Clerk	37	0	1
„ Ditto ditto Surveyor	67	11	11
	1,628	11	10
	£46,850	13	6

We hereby certify that we have examined and allowed the Accounts, of which this Account is an Abstract.

Dated this 30th day of June, 1887.

JOHN CAPES,
I. J. MOORE,
H. G. HEISER. } Auditors.

GENERAL PURPOSES ACCOUNT FOR THE WHOLE DISTRICT.

Revenue and Outlay from Lady-day, 1886 to Lady-day, 1887.

REVENUE.

	£	s.	d.
Balance brought forward	1,857	2	
To Cash of Overseers of Parishes in the District upon Orders of Contribution	18,000	0	
„ Ditto of ditto for Precept of School-Board for London	13,742	17	6
„ Ditto returned by School Board for London in consequence of Reduction of Assessment for 1886	299	12	1
	14,042	9	
„ Ditto for Reinstatements of Paving and Contributions	1,634	5	
„ Ditto Rents... ..	118	19	
„ Ditto Fines and Costs recovered	1	16	
„ Ditto Sale of Surplus Lands	15	0	
„ Ditto Parliamentary Grant in aid of Disturnpiked Roads in respect of the annual cost of the maintenance of the Commercial Road	243	10	
„ Ditto of Owners for Making-up and Paving the following New Streets, viz. :—			
Selsey Street... ..	198	11	0
Tomlin Terrace	313	13	10
	512	4	1
„ Ditto Balance of Registration of Canal Boats Account (carried forward)	2	0	
	£36,427	7	

OUTLAY.

	£	s.	d.
Paving	2,932	9	6
Lighting	3,098	11	8
Cleansing, Watering, and Removal of Dust	5,433	19	6
Ditto ditto Commercial Road	1,112	2	1
	6,546	1	7
Roads Account	1,359	9	5
Urinals	62	4	9
Expenses under Adulteration of Food Act, Laboratory, &c.	163	18	2
Disinfecting and Hospital Account	229	17	9
Superannuation	55	0	0
Planting Trees	1	17	9
Proceedings before Justices	30	16	6
Registration of Canal Boats	22	18	0
Common Charges	1,590	3	6
Sundries	9	3	5
Charges on Rates : Interest	1,107	11	1
Principal Repaid	2,538	0	0
	3,645	11	1
School Board for London	14,042	9	7
Insurance and Repairs to Houses Nos. 7 to 15, White Horse Street... ..	29	6	4
Rent of Stone Yard, &c.	17	0	0
Making-up and Paving New Streets, viz. :—			
Selsey Street	198	11	0
Tomlin Terrace	313	13	10
	512	4	10
Balance	2,078	3	7
	£36,427	7	5

We hereby certify that we have examined and allowed the Accounts,
of which this Account is an Abstract.

Dated this 30th day of June, 1887.

J. CAPES, }
I. J. MOORE, } Auditors.
H. G. HEISER, }

No. 3.

SEWERS ACCOUNT FOR THE WHOLE DISTRICT.

Revenue and Outlay from Lady-day, 1886, to Lady-day, 1887.

REVENUE.				OUTLAY.			
		£	s. d.			£	s. d.
Balance brought forward	...	56	18	Constructions	...	165	19 9
To Cash of Overseers of Parishes in the District upon Orders of Contribution	...	1,100	0	Repairs	...	36	19 9
„ Ditto to meet Precept of Metropolitan Board of Works for Consolidated Rate	...	9,008	15	Cleansing	...	114	19 10
„ Ditto of Metropolitan Board of Works Return in consequence of Reduction in the Assessment for 1886 (carried forward)	...	227	16	Incidentals	...	43	13 2
„ Ditto Contributions to Sewers	...	29	16	Carting Deposit	...	2	12 0
Balance	...	449	11	Flushing	...	522	16 2
				Common Charges	...	977	1 8
				Metropolitan Board of Works—Amount of Precept for Consolidated Rate	...	9,008	15 6
		£10,872	17			£10,872	17 10

We hereby certify that we have examined and allowed the Accounts, of which this Account is an Abstract.

Dated this 30th day of June, 1887.

J. CAPES,
I. J. MOORE,
H. G. HEISER, } *Auditors.*

PARISH OF LIMEHOUSE SEWERS ACCOUNT.

Revenue and Outlay from Lady-day, 1886, to Lady-day, 1887.

REVENUE.

	£	s.	d.
Balance brought forward	172	3	
To Cash of Overseers upon Orders of Contribution	300	0	
„ Ditto of ditto for Metropolitan Board's Precept for Metropolitan Consolidated Rate	3,855	9	
„ Ditto Contributions to Sewers	7	15	
Balance	315	5	

£4,650 13

OUTLAY.

	£	s.	d.
For Constructions	14	10	8
Repairs	20	7	3
Cleansing	98	4	4
Incidentals	3	0	3
Carting Deposit	1	10	0
Flushing	229	4	1
Common Charges	428	7	4
Metropolitan Board of Works—Amount of Precept for Metropolitan Consolidated Rate	3,855	9	8

£4,650 13 7

We hereby certify that we have examined and allowed the Accounts,
of which this Account is an Abstract.

Dated this 30th day of June, 1886.

J. CAPES,
I. J. MOORE, } *Auditors.*
H. G. HEISER, }

HAMLET OF RATCLIFFE GENERAL PURPOSES ACCOUNT.

Revenue and Outlay from *Lady-day, 1886, to Lady-day, 1887.*

REVENUE.

	£	s.	d.
Balance brought forward	395	0	0
To Cash of Overseers upon Orders of Contribution ...	3,200	0	0
„ Ditto of ditto for Precept of School Board for London	2,940	13	5
„ Ditto returned by School Board for London in consequence of Reduction of Assessment for 1886... ..	8	3	7
„ Ditto Rents... ..	54	3	0
„ Ditto Reinstatements of Paving and Contributions ...	448	13	0
„ Ditto Fines and Costs Recovered	1	16	0
„ Ditto Parliamentary Grant in aid of Disturnpiked Roads, in respect of the annual cost of the maintenance of the Commercial Road	48	14	0
	<u>£7,097</u>	<u>4</u>	<u>4</u>

OUTLAY.

	£	s.	d.
Paving	612	12	8
Lighting	746	13	6
Cleansing, Watering, and Removal of Dust	1,151	8	9
Commercial Road, &c., Cleansing and Watering	222	8	5
Roads Account	1,373	17	2
Gravels	221	18	0
Expenses under Adulteration of Food Act, &c.	25	3	0
Disinfecting and Hospital Account	35	1	5
Superannuation	49	3	10
Proceedings before Justices	11	15	4
Registration of Canal Boats	5	0	8
Common Charges	4	18	0
Sundries	340	5	1
Charges on Rates—Interest	3	0	0
Principal Repaid	58	16	1
Insurance and Repairs to Houses Nos. 7 to 15, White Horse Street... ..	213	6	8
School Board for London	272	2	9
Balance	29	6	4
	<u>£7,097</u>	<u>4</u>	<u>4</u>

We hereby certify that we have examined and allowed the Accounts, of which this Account is an Abstract.

Dated this 30th day of June, 1887.

J. CAPES,
I. J. MOORE, } *Auditors.*
H. G. HEISER,

No. 7.

HAMLET OF RATCLIFF SEWERS ACCOUNT.

Revenue and Outlay from Lady-day, 1886, to Lady-day, 1887.

REVENUE.						OUTLAY					
					£ s.						£ s. d.
Balance brought forward	18 13	Constructions	11 16 7
To Cash of Overseers upon Orders of Contribution	...				200 0	Repairs	5 15 10
„ Ditto of ditto for Precept of Metropolitan Board for Consolidated Rate	1,879 5	Cleaning	16 4 4
„ Ditto Contributions to Sewers	9 6	Accidentals	3 17 5
Balance	131 15	Starting Deposit	1 2 0
						Flushing	111 17 5
						Common Charges	209 1 6
						Metropolitan Board of Works—Amount of Precept for Metropolitan Consolidated Rate	1,879 5 3	
					<u>£2,239 0</u>						<u>£2,239 0 4</u>

// We hereby certify that we have examined and allowed the Accounts, of which this Account is an Abstract.

Dated this 30th day of June, 1887.

J. CAPES,
I. J. MOORE,
H. G. HEISER, } *Auditors.*

PARISH OF SHADWELL GENERAL PURPOSES ACCOUNT.

Revenue and Outlay from Lady-day, 1886, to Lady-day, 1887.

REVENUE.

	£	s.	d.
To Cash of Overseers upon Orders of Contributions ...	3,200	0	
„ Ditto of Ditto for Precept of School Board for London	2,184	8	2
„ Ditto returned by School Board for London in consequence of Reduction of Assessment for 1886	102	15	7
	2,287	3	
„ Ditto Rents	10	0	
„ Ditto Reinstatements of Paving and Contributions ...	296	0	
Balance	254	3	
	£6,047	7	

OUTLAY.

	£	s.	d.
Balance brought forward	254	6	10
Graving	884	13	5
Lighting	524	10	1
Cleansing, Watering, and Removal of Dust	880	10	4
Spads Account	1	3	0
Corrivals	14	16	8
Expenses under Adulteration of Food Act, &c.	26	1	1
Disinfecting and Hospital Account	36	10	9
Superannuation *	8	14	10
Proceedings before Justices	17	15	10
Registration of Canal Boats	3	12	10
Common Charges	252	15	2
Laundries	2	18	6
Charges on Rates, viz. :—			
Interest	358	14	6
Principal Repaid	476	0	0
	834	14	6
Valent of Stone Yard	12	0	0
Shadwell Schools—1 year's Rent Charge	5	0	0
School Board for London	2,287	3	9
	£6,047	7	7

We hereby certify that we have examined and allowed the Accounts,
of which this Account is an Abstract.

Dated this 30th day of June, 1887.

J. CAPES,
L. J. MOORE, } Auditors.
H. G. HEISER,

PARISH OF SHADWELL METERS ACCOUNT.

Revenue and Outlay from 1st Jan, 1886, to Lady-day, 1887.

REVENUE.				OUTLAY.			
	£	s.	d.		£	s.	d.
Balance brought forward	8	9		Constructions	63	4	9
To Cash of Overseers upon Orders of Contribution... ..	200	0		Repairs	3	17	11
„ Ditto of ditto for Metropolitan Board's Precept for Con- solidated Rate	1,480	2		Cleansement	0	11	2
„ Ditto for Contributions to Sewers... ..	1	0		Accidentals	0	18	10
Balance	97	11		Brushing	83	2	0
				Common Charges	155	6	1
				Metropolitan Board of Works—Amount of Precept for Metropolitan Consolidated Rate	1,480	2	1
	£1,787	2					
					£1,787	2	10

We hereby certify that we have examined and allowed the Accounts,
of which this Account is an Abstract.

Dated this 30th day of June, 1887.

J. CAPES,
I. J. MOORE, } Auditors.
H. J. HEISER,

PARISH OF WAPPING GENERAL PURPOSES ACCOUNT.

Revenue and Outlay from Lady-day, 1886, to Lady-day, 1887.

[illegible]

We hereby certify that we have examined and allowed the Accounts,
of which this Account is an Abstract.

Dated this 30th day of June, 1887.

J. CAPES,
I. J. MOORE, } *Auditors.*
H. G. HEISER, }

No. 11.

PARISH OF WAPPING SEWERS ACCOUNT.

Revenue and Outlay from Lady-day, 1886, to Lady-day, 1887.

REVENUE.

	£	s.	d.
To Cash of Overseers upon Orders of Contribution ...	400	0	
„ Ditto of ditto for Precept of Metropolitan Board for Consolidated Rate ...	1,793	18	
„ Ditto Contributions to Sewers ...	11	13	
Balance ...	132	16	

£2,338 8

OUTLAY.

	£	s.	d.
Balance brought forward ...	142	7	3
of Constructions ...	76	7	9
of Repairs ...	6	18	9
of Incidentals ...	35	16	8
of Flushing ...	98	12	8
of Common Charges ...	184	6	9
of Metropolitan Board of Works—Amount of Precept for Metropolitan Consolidated Rate ...	1,793	18	6

£2,338 8 4

We hereby certify that we have examined and allowed the Accounts, of which this Account is an Abstract.

Dated this 30th day of June, 1887.

J. CAPES,
I. J. MOORE,
H. G. HEISER, } *Auditors.*

No. 12.

LIABILITIES.

	£	s.	d.
London Life Association...	8,070	0	0
Metropolitan Board of Works ...	16,904	0	0

£24,974 0 0

ASSETS.

	£	s.	d.
in hands of Treasurer ...	1,523	19	10
ditto Clerk ...	37	0	1
ditto Surveyor ...	67	11	11

£1,628 11 10

CONTRACTS.

1886.

March 24th, Messrs. Mowlem & Co., Paving Works...	...	} as per schedule of prices.
---	-----	------------------------------

1886.

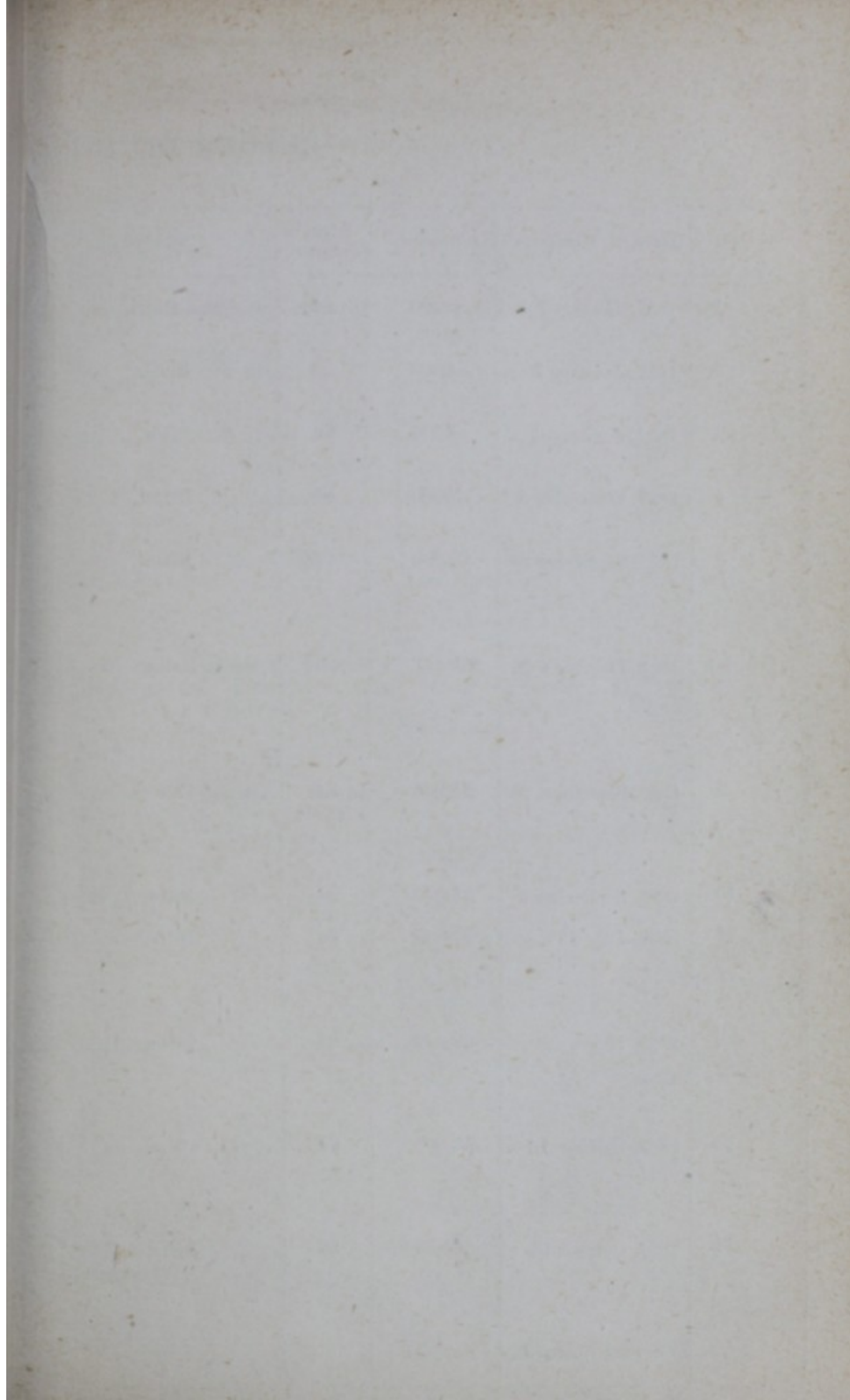
September 20th, Mr. J. Jackson, Sewers Work	} as per schedule of prices.
---	-----	-----	------------------------------

1886.

July 16th, Messrs. P. & E. Abbot, Scavenging, Removal of Dust and Watering	2,430	0	0	0
--	-----	-------	---	---	---

July 20th, Mrs. E. Parsons, ... ditto	1,320	0	0	0
--	-----	-------	---	---	---

July 21st, Mrs. M. A. Rollinson, Scavenging and Watering	...	775	0	0	0
--	-----	-----	---	---	---



No. 14.

RETURN OF MONIES RAISED ON LOAN AT INTEREST.

No.	Date of Mortgage.	Amount.	Rate of Interest	Secured on.	For what purpose Borrowed.	From whom Borrowed.	For what Term.	Repayments.
1	1857, January 7	£400	£5	General Rates.	For Improvements at Wapping.	R. Stephenson.	Three years.	The whole. £400 0 0
2	1857, January 7	£400	£5	Ditto.	Ditto	W. Maud.	Ditto.	The whole. £400 0 0
3	1857, January 7	£400	£5	Ditto.	Ditto	W. Walton.	Ditto.	The whole. £400 0 0
4	1857, September 2	£300	£5	Ditto.	Ditto	R. Stephenson.	Ditto.	The whole. £300 0 0
5	1858, September 29	£1,800	£4½	Ditto.	For Paving Works in Limehouse.	Thos. Dinmore.	Fifteen years, to be repaid by fifteen equal annual instalments.	The whole. £1,800 0 0
6, 7, & 8	1858, October 7	£3,000	£4½	Sewer Rates.	For Sewers Works in Limehouse.	General Annuity Endowment Association.	Twenty years, to be repaid by twenty equal annual instalments.	The whole. £3,000 0 0
9	1859, September 21	£5,000	£4	General Rates.	For Paving Works in Limehouse.	British Empire Life Assurance Company.	Fifteen years, to be repaid by fifteen equal annual instalments.	The whole. £5,000 0 0
10	1860, September 5	£5,000	£4½	Ditto.	Ditto	Ditto.	Ditto.	The whole. £5,000 0 0
11	1862, July 23	£7,000	£4½	Ditto.	For Board's Offices.	Ditto.	Twenty years, to be repaid by twenty equal annual instalments.	The whole. £7,000 0 0
12	1867, March 27	£6,000	£5	Ditto.	For Improvements at Wapping.	London Life Association.	Twenty-five years, to be repaid by twenty-five equal annual instalments.	£4,800 0 0
13	1867, October 16	£3,000	£5	Ditto.	For Improvements in Limehouse.	Ditto.	Twenty years, to be repaid by twenty equal annual instalments.	£2,850 0 0
14	1867, October 16	£5,500	£5	Ditto.	For Improvements in Shadwell.	Ditto.	Twenty-five years, to be repaid by twenty-five equal annual instalments.	£4,180 0 0
Carried forward...		£37,800					Carried forward...	£35,130 0 0

No. 14 (Continued).

RETURN OF MONIES RAISED ON LOAN AT INTEREST (Continued).

No.	Date of Mortgage.	Amount.	Rate of Interest.	Secured on.	For what purpose raised or Borrowed.	From whom Borrowed.	For what Term.	Repayments.
	<i>Brought forward...</i>	£37,800					<i>Brought Forward...</i>	£35,130 0 0
15	1872, June 22	£7,250	£3 17/6	General Rates.	For Improvements in Limehouse.	Metropolitan Board of Works.	Fifty-seven years, to be repaid as follows: £150 on 1st Oct., 1879; £142 on 1st Oct. in 50 succeeding Years, (now reduced to £10 per year).	£6,749 0 0 (By Contribution from Metropolitan Board.) £71 0 0
16	1872, July 24	£18,000	£4 10/	Ditto.	For Paving the Commercial Road, the East India Dock Road, and the West India Dock Road.	London Life Association.	Twenty years, payable by twenty equal annual instalments.	£12,600 0 0
17	1872, August 10	£4,000	£3 17/6	Ditto.	For Improvements in Sun Tavern Gap, Shadwell.	Metropolitan Board of Works.	Fifty-seven years, to be repaid as follows: £50 on 1st Oct., 1879; £79 on 1st Oct. in 50 succeeding Years.	The whole. £4,000 0 0 (By Contribution from Metropolitan Board.)
18	1873, January 20	£2,000	£3 17/6	Ditto.	Ditto.	Ditto.	Fifty-seven years, to be repaid as follows: £50 on 1st Oct., 1879; £39 on 1st Oct. in 50 succeeding Years.	The whole. £2,000 0 0 (By Contribution from Metropolitan Board.)
19	1873, January 20	£6,000	£3 17/6	Ditto.	Ditto.	Ditto.	Fifty-seven years, to be repaid as follows: £120 on 1st Oct., 1873; £105 on 1st Oct. in 56 succeeding Years.	£1,485 0 0
20	1873, January 20	£7,250	£3 17/6	Ditto.	For Improvements in Limehouse.	Ditto.	Fifty-seven years, to be repaid as follows: £138 on 1st Oct., 1873; £127 on 1st Oct. in 56 succeeding Years.	£1,789 0 0
21	1874, October 1	£2,816 10/	£3 18/6	Ditto.	For Improvements in Wapping Wall, Shadwell.	Ditto.	Fifty-five years, to be repaid as follows: £62 10s. on 1st Oct., 1875; £51 on 1st Oct. in 54 succeeding Years.	£623 10 0
	<i>Carried forward...</i>	£85,116 10/					<i>Carried forward...</i>	£64,447 10 0

No. 14 (Continued).

RETURN OF MONEY RAISED ON LOAN AT INTEREST (Continued).

No.	Date of Mortgage.	Amount.	Rate of Interest	Secured on.	For what purpose Borrowed.	From whom Borrowed.	For what Term.	Repayments.
	<i>Brought forward ...</i>	£85,116 10/					<i>Brought forward ...</i>	£64,447 10 0
22	1874, October 1 ✱	£2,816 10/	£3 18/6	General Rates.	For Improvements Wn. Wapping Wall, Shadwell.	Metropolitan Board of Works.	Fifty-five years, to be repaid as follows: £62 10s. on 1st Oct., 1875; £51 on 1st Oct., in 54 succeeding years.	The whole. £2,816 10 0 (By Contribution from Metropolitan Board).
23	1876, February 9	£1,900	£3 18/6	Ditto.	For widening High Street, Wapping, between Wapping Dock Street, and Sir William Warren's Square.	Ditto.	Fifty-four years, to be repaid as follows: £45 on 1st Oct., 1876; £35 on 1st Oct. in 53 succeeding years.	£395 0 0
24	1876, February 9	£1,900	£3 18/6	Ditto.	Ditto.	Ditto.	Ditto.	The whole. £1,900 0 0 (By Contribution from Metropolitan Board).
25	1876, March 8	£10,500	£3 18/6	Ditto.	For Paving Commercial Road, East and West India Dock Roads, and for Paving in Limehouse and Shadwell.	Ditto.	Fifteen years, to be repaid as follows: £700 on 1st Oct., 1876; £700 on 1st Oct. in 14 succeeding years.	£7,700 0 0
		<u>£102,233</u>						<u>£77,259 0 0</u>

PROPERTIES BELONGING TO THE BOARD.

Freehold Offices in White Horse Street, Ratcliff.

Leasehold Arch on the North side of the "Mitre" at Limehouse, let to Mr. Hawkrige at £5 per annum. Leasehold Arch on the South side of the "Mitre" under the London and Blackwall Railway, let to Mr. De Ritter at £4 per annum.

Leasehold Arch under the London and Blackwall Railway on the West side of Gill Street, Limehouse, and a piece of ground adjoining the said Arch.

Five Freehold Houses, Nos. 7, 9, 11, 13, and 15, White Horse Street, Ratcliff, let to weekly tenants.

Two Leasehold Arches under the London and Blackwall Railway, on the West side of White Horse Street, Ratcliff, and ground on the North side of the said Arches used as a Stone Yard.

Leasehold Arch in Little John Street, Ratcliff, under the London and Blackwall Railway, half used as a Mortuary, and the other half used as a Disinfecting House.

Piece of Freehold Land, North side of High Street, Wapping, adjoining St. John's Warehouses, part let to Dundee, Perth, and London Steam Navigation Company, as yearly Tenants, at £20 per annum, and part let to Messrs. Skentelbery and Jarvis, at £2 10s. for every four weeks.

TO THE
BOARD OF WORKS FOR THE LIMEHOUSE
DISTRICT.

DEPARTMENT OF WORKS,

OFFICES, WHITE HORSE STREET,

COMMERCIAL ROAD E.

GENTLEMEN,

I beg to submit to you my Report upon the works executed in the District from Lady-day, 1886, to Lady-day, 1887.

SEWERS.

New sewers have been constructed of the following lengths and sizes, viz. :—

RATCLIFF.—91 feet run of 9-in. pipe sewer have been constructed in Hardinge Street.

SHADWELL.—366 feet run of 12-in. pipe sewer have been constructed in Sage Street.

WAPPING.—312 feet run of 12-in. pipe sewer have been constructed in Red Lion Street; and 48 feet run of 12-in. pipe sewer have been constructed in Coopers Row.

The following sewers have been cleansed by the Contractor of the Board, viz. :—

LIMEHOUSE.—

150 feet run of 12-in. pipe sewer in Galt Street.

182 feet run of 12-in. pipe sewer in Dupont Street.

264 feet run of 12-in. pipe sewer in Commercial Road, opposite Limehouse Church.

145 feet run of 12-in. pipe sewer in St. Anne Street.

300 feet run of 12-in. pipe sewer in Stainsby Road.

The 12-in. pipe sewer in Commercial Road opposite the "Cape of Good Hope."

RATCLIFF.—

50 feet run of 18-in. barrel Sewer in Belgrave Street.

96 feet run of 12-in. pipe sewer in York Road.

9 New Gulley Grates have been supplied and fixed.

2 New Gulley Pans have been supplied and fixed, and 83 feet run of 6-in. pipe drain constructed in Trigg's Place, Limehouse.

1 New Gulley Pan has been supplied and fixed, and the Gulley Drain reconstructed.

5 Gullies repaired.

5 New Flushing Boxes supplied and fixed.

1 Flushing Box repaired.

1 New side entrance cover fixed.

1 Gulley Grate lowered.

4 Air Shafts raised.

2 Ventilators raised.

1 Ventilating Shaft repaired

The sewer in Baroda Place, Shadwell, has been unstopped and repaired.

The small brick and pipe sewers throughout the District have been flushed by the men employed by the Board with water supplied by the East London Water Works Co.

The Metropolitan Board of Works have connected the Storm Relief Sewer, discharging at Ratcliff Cross, with the Main Low Level Sewer passing through White Horse Street and Rose Lane.

HOUSE DRAINAGE.

43 Buildings (including 12 New Structures and 3 Blocks of Artizans' Dwellings) have been connected with the sewers, and the following works executed in connection therewith, viz. :—

100 feet of 12-in. Pipe Drain laid.
1,122 " " 9-in. " " "
3,698 " " 6-in. " " "
1,044 " " 4-in. " " "
70 Closet Pans and Traps fixed.
116 Sinks and Traps fixed.

PAVING.

New footway paving has been laid down as follows, viz. :—

LIMEHOUSE.—Parts of Aston Street, Salmon Lane, Maroon Street and Chusan Place, and the passage leading from Waterloo Street to Gloucester Street. Part of the footway on the south side of Commercial Road, from Gill Street westward to the boundary, and in Galt Street, by the "Vulcan" Public House, has been paved with Imperial Stone.

RATCLIFF.—Parts of White Horse Street and Walter Street.

SHADWELL.—Parts of New Gravel Lane, Gould's Hill and Charles Place.

WAPPING.—Parts of Red Lion Passage and Old Gravel Lane.

Old footway paving has been relaid as follows :—

LIMEHOUSE.—Parts of Burdett Road, Hope Place, Three Colt Street, Salter Street, Rhodeswell Road, East India Dock Road, Church Row, Stainsby Road, Five Bell Alley, Salmon Lane, Copenhagen Place, Dupont Street, Barnes Street, Commercial Road in various places, Chevers Court, Maroon Street, Willow Row, Carrick's Buildings, Trigg's Place, Ropemaker's Fields, Wilson's Place, Anchor Street, Oak Lane, Clemence Street, Galt Street, Eastfield Street, Robert Street, Batson Street, Chusan Place, Aston Street and in the passage leading to Dalglish Street.

RATCLIFF.—Parts of White Horse Street, Durham Row, York Street West, Henry Street, Dorset Street, York Street East, James Place, Walter Street and various places in the Commercial Road.

SHADWELL.—Parts of Milk Yard, Hastings Place, High Street, New Gravel Lane, Victoria Street, Gould's Hill, Cable Street, and Charles Place.

WAPPING.—Parts of High Street, Church Court, Upper Well Alley, Red Lion Passage and Nightingale Lane.

Old carriageway paving has been relaid as follows :—

LIMEHOUSE.—The carriageway of Dalgleish Place and part of Hope Place, Island Row, Northey Street, Three Colt Street, Shoulder of Mutton Alley and Copenhagen Place.

RATCLIFF.—Parts of York Street East and West, Broad Street, Belgrave Street and Stepney High Street, Rose Lane, Hardinge Street, Horseferry Road, London Street, Walter Street, White Horse Street, Thomas Street, Love Lane and Ben Jonson Road.

SHADWELL.—The carriageway of High Street and parts of Wapping Wall, Cable Street, Albert Street, Milk Yard, New Gravel Lane, Victoria Street, Juniper Street, Hunts Mews and Charles Place.

WAPPING.—Parts of High Street and Old Gravel Lane, Queen Street and Wellclose Square.

New carriageway paving has been laid down as follows, viz. :—

LIMEHOUSE.—The carriageway of the north end of Church Row has been repaved with second-hand 3 x 6 Granite Pitching, and the Wood Paving taken up and relaid.

The carriageway of Robert Street has been paved with second-hand Pitching.

The carriageways of Willow Row, Carrick's Buildings, Barnes Buildings, Chevers Court and Trigg's Place have been paved with moorstone.

RATCLIFF.—The carriageways of Belgrave Street and Stepney High Street have been repaved with second-hand 5 x 7 Pitching where required to replace defective and worn Pitching.

SHADWELL.—The carriageways of High Street, Hunts Mews and Charles Place have been repaved with second-hand Pitching, where required, to replace defective and worn Pitching.

LIGHTING.

The number of Public Lamps in the District is as follows viz :—

Limehouse	392
Ratcliff	205
Shadwell	139
Wapping	95
				<hr/>
				831

In addition there are two of "Bray's" Patent Lamps fixed on the Street Rests in the Commercial Road, opposite Gill Street, Limehouse, and White Horse Street, Ratcliff.

The above total shews a net increase of 2 on the number reported at Lady-day, 1886.

The Commercial Gas Company have painted the whole of the lamp posts, columns, and brackets throughout the District.

MACADAM AND UNPAVED ROADS.

The Carriageways of the following Streets and places have been made up with broken Guernsey Granite, and rolled with the Steam Roller, viz :—Burdett Road, Thomas Street, Turner's Road, Locksley Street, Henry Street, Dod Street, Barnes Street and Wilson Street, Limehouse, and Bromley Street, Ratcliff.

Parts of the Carriageways of the following Streets have been made up with broken Guernsey Granite, and rolled with the Steam Roller, viz :—Maroon Street, Aston Street, Stainsby Road, Brook's Terrace, Dixon Street, Pigott Street, Pixley Street, Turner's Road, Henry Street, Samuel Street, Clemence Street, Streatfield Street, Wilson Street, Barnes Street, Repton Street, Silver Street, Pelling Street and St. Paul's Road, Limehouse, and Belgrave Street, and Spring Garden Place, Ratcliff.

Parts of the Carriageways of the following Streets have been made good with stone chippings, viz :—St. Paul's Road, Eastfield Street, Birchfield Street, Lowell Street, Blount Street, Dalgleish Place, Cayley Street, Brenton Street and Samuel Street, Limehouse, and York Street West, Green Street, York Square, Belgrave Street, Hardinge Street, Thirza Street and Portland Street, Ratcliff.

NEW CARRIAGE CROSSINGS.

New Carriage Crossings have been formed at the entrance to the following premises at the cost of the person requiring the same, viz :—

LIMEHOUSE.—At the new entrance gateway to Dr. Barnardo's Home for Working Boys in Commercial Road, next the Limehouse Curve Railway Bridge.

At the entrance to Messrs. Campbell and Swainston's premises in St. Paul's Road.

The crossing at the entrance to Freeman's Cooperage, Church Row, has been altered.

SHADWELL.—At the entrance of the premises in rear of Messrs. Hewett's Offices, Gould's Hill.

WAPPING.—At the entrance to Granite Wharf, High Street.

At the entrance to the London and St. Katharine Docks Company's premises in Upper East Smithfield.

PUBLIC URINALS.

The number of Public Urinals in the District is 21.

The Urinals in the District are periodically flushed, and cleansed three times each day and oftener if required in hot weather, by men employed by the Board, with water supplied by the East London Water Works Company.

Water boards have been fixed in Spencer Street, Limehouse, to prevent nuisances being committed along the dead wall.

CLEANSING AND WATERING.

The Carriageways and Footways of the principal Streets throughout the District are swept and cleansed daily and the others every alternate day. In bad weather the whole of the streets are cleansed daily, and the Commercial Road and East and West India Dock Roads twice a day if necessary.

During the Season which commenced on the 1st March, 1886 and terminated on the 18th October, 1886, the streets were watered by the Contractors with water supplied by the East London Water Works Company, the quantity of water used during the season being 6,163,000 gallons.

During the hot and dry weather the Courts and Alleys throughout the District have been flushed with water.

GENERAL WORKS.

The Great Eastern Railway Company have fixed galvanized iron screens under certain of the Railway Bridges in place of old and defective screens, to prevent drippings from the bridges.

The Post Office Authorities have fixed Fire Alarm Posts as follows, viz. :—one on the west side of New Gravel Lane, near the Dock Gate ; one on the east side of Church Street, Wapping, near the Charity Schools ; one at the west entrance to Stepney Churchyard ; and one in the Commercial Road, opposite the Swan Public House, at the corner of White Horse Street.

The Post Office Authorities have laid a 2-in. main for the conveyance of telegraph wires from the Commercial Road through Hardinge Street to the Fire Engine Station in Glamis Road.

The Hydraulic Dock Bridge in New Gravel Lane has been repaired by the London and St. Katharine Docks Company, the bridge being closed by permission of this Board during the works.

Messrs. Banes, Noel and Co. have erected a Bridge across High Street, Wapping, from Colonial Wharf to the new warehouses on the opposite side of the street as sanctioned by the Board.

The Weigh-bridge constructed by Messrs. Clarke and Co. in Shoulder of Mutton Alley, Limehouse has been removed at their expense, it not being further required for their purposes.

WORKS CARRIED OUT BY GAS & WATER COMPANIES.

The Commercial Gas Company have laid an 18-in. main on the south side of Commercial Road from the "Eastern Hotel," to the Horseferry Branch Road; a short length of new main on the north side of Commercial Road, from York Road to White Horse Street; also a new main from the corner of White Horse Street, by the "Swan" Public House, along such street, thence through Brook Street and Cable Street to Glamis Road, Shadwell; and have also taken up the 6-in. main in High Street, Shadwell and substituted a 14-in. main in place thereof. The same Company have laid a new 12-in. main through Cinnamon Street, Brewhouse Lane, and High Street, Wapping; and a new 18-in. main from Cable Street, opposite Johnson Street, along King David Lane, thence along High Street, Shadwell and New Gravel Lane to the Dock Entrance.

The East London Water Works Company have laid new 4-in. mains in London Street, Ratcliff, and High Street, Shadwell, between Glamis Road and Love Lane; and also a new main in The Opening and through Narrow Street, Ratcliff.

STREET RENAMED AND RENUMBERED.

The houses in York Road have been renumbered pursuant to an order of the Metropolitan Board of Works.

Victoria Street, Cable Street, partly in the parish of St. Paul, Shadwell, and partly in the parish of St. George-in-the-East, has been renamed "Dellow Street," by an order of the Metropolitan Board of Works.

OVERHEAD WIRES.

In consequence of the heavy fall of snow which took place on the 26th December, 1886, the whole of the wires passing over the District were broken in one place or another. The broken wires were strewn on the foot and carriageways, and the men employed by the Board and the police in many cases cut the wires and

removed them from the thoroughfares. No damage occurred in consequence of the storm having happened in the night, but if the storm had taken place in the day time there is no doubt that most serious accidents would have been caused.

In my report to the Board upon this subject I made certain suggestions with a view to the prevention of accidents by the breakage of overhead wires, and the same were communicated to Sir Joseph Bazalgette, the engineer of the Metropolitan Board of Works, as requested by him.

SNOW STORMS.

Heavy falls of snow occurred on 26th December, 1886, and 14th and 15th March, 1887.

A large number of extra men were employed in addition to the Board's men for the purpose of removing the snow from the footways and forming crossings and clearing the snow from the roadways. The snow was removed by the contractors of the Board under their contract, a large additional number of carts being engaged in the work. The cost paid by the Board amounted to £60 16s. 2d.

CONTROL OVER DEMOLITION OF OLD HOUSES.

A communication was received from the Metropolitan Board of Works dated 16th March, 1886, referring to the fall of certain houses in Holloway Road, and the recommendations of the Coroner's Jury which enquired into the circumstances, namely, that the Metropolitan Board should obtain Parliamentary powers giving the District Surveyors control over the pulling down of old houses. The Metropolitan Board asked to be furnished with particulars of instances, which might have occurred in the District within the last three years, of danger arising from the demolition of buildings, and suggested that the demolition of buildings near public thoroughfares should be carried out subject to Bye-Laws to be approved by the Home Secretary, that the District Surveyor's expenses be charged upon the site of the building, and that the Metropolitan Board or District Surveyor have power to order the necessary hoarding or other works, and the diversion of the public traffic.

The Metropolitan Board were informed that no accidents of the nature referred to had occurred in this District, inasmuch as in every case a sufficient hoarding had been put up as required to protect the public, and that with regard to the powers proposed to be obtained, the District Board saw no objection to the suggestion that power be given to District Surveyors to control the pulling down of dangerous buildings in or near public thoroughfares, but strongly objected to and would oppose any interference with their rights as to the erection of hoardings and the regulation of the public traffic, the existing powers vested in the District Board being in their opinion sufficient for the purpose.

MAKING UP AND PAVING NEW STREETS.

The works in connection with the making up, paving, and draining, &c., of Selsey Street and the making up, paving, draining and erection of a concrete retaining wall at Tomlin Terrace, Limehouse, have been carried out by the Board's contractors.

The cost of the work was as follows, viz. :—

Selsey Street	£214	3	3
Tomlin Terrace	£333	3	10

The above amounts were apportioned amongst and paid by the owners of houses and premises in and abutting upon the said streets.

PROPOSED BIRCHFIELD STREET IMPROVEMENT.

A communication was received from the Poplar District Board enquiring whether, having regard to the erection of the London and County Bank premises at the corner of Birchfield Street and East India Dock Road, and the arrangement with that Board by which a portion of the ground formerly enclosed by the wall of the house No. 52, East India Dock Road was to be given up to form part of the public footway, this Board would be disposed to co-operate with the Poplar Board at the present time on the basis of the Joint Report of the Surveyor of the Poplar Board and myself, dated 15th June, 1883, in extending the improvement as shewn upon the plan attached to such Report. When the improvement was proposed in 1883, this Board resolved that in the event of the London and County Banking Company waiving all compensation for the land required for the improvement the subject matter be again considered. It now appeared that a portion only of the land required for the improvement was proposed to be given up by the London and County Bank and that it was not proposed to set back the frontage of the Bank premises in Birchfield Street to the line shewn on the plan accompanying the Joint Report of the Surveyors before referred to, and it was consequently resolved that no action be taken in the matter.

Subsequently the Poplar Board became possessed, by arrangement with the London and County Banking Company, of a piece of land at the northern end of Birchfield Street within the Limehouse District. This was thrown into the public thoroughfare, widening it to the extent of the Bank premises, and upon the completion of the necessary works of forming the footpath and paving the additional portion of the carriageway (at the expense of the Poplar Board) this Board took the additional width under its jurisdiction upon condition of the Poplar District Board undertaking to widen and pave the remaining portion of the street upon the expiration of the existing leases.

VENTILATION OF SEWERS.

In consequence of the many complaints of the escape of effluvia arising from the ventilating grates and gullies of the main sewers in the District, and particularly from the ventilating grate at the Triangle, Limehouse, the attention of the Metropolitan Board of Works was called to the subject with a request that directions might be given for the deodorisation of the sewage at that point in addition to the same process which was being applied to the other main lines of sewers in the District, so as to prevent the discharge of offensive and noxious gases therefrom. The Metropolitan Board complied with this request, the result of the deodorising operations being very satisfactory.

COAL AND WINE DUES.

Representations having been made to the Board from several Districts in the Metropolis asking the Board to consider the question of continuing the Coal and Wine Dues as proposed by the Metropolitan Board of Works and the Corporation of the City of London, resolutions were passed in support thereof, Delegates were appointed to attend a conference upon the subject at the offices of the Whitechapel District Board, and a petition was presented to the House of Commons in favour of the Coal and Wine Dues Continuance Bill.

DR. BARNARDO'S HOMES, STEPNEY CAUSEWAY.

Application was made on behalf of Dr. Barnardo for permission to form a Subway under Stepney Causeway from the Boys' Home on the west side of that street to the new Infirmary on the east side. The Board granted the application upon certain conditions of repair and removal when required, and upon payment of a nominal rent of £1 per annum for the user of the Subway, a deed to be executed embodying such conditions.

The Board was also requested to make certain alterations in the width of that portion of the roadway opposite Dr. Barnardo's Homes so as to prevent the frequent blocking of the street which is very inconvenient, not only to persons visiting the Homes but to the public generally; also to pave the widened portion of the roadway with asphalt in lieu of the present pitching. The Board consented to execute the works at the expense of Dr. Barnardo.

STOPPAGE OF SHOULDER OF MUTTON ALLEY.

Notice was given to the Board by Mr. Frederick Machin, of Broad Street, Ratcliff, of his desire to stop up a certain disused passage or highway situate in the Hamlet of Ratcliff, between Butcher Row and the Orchard, formerly known as Shoulder of

Mutton Alley, on the ground that such disused passage was unnecessary. It appeared that the thoroughfare in question was closed by the Trustees of the Hamlet of Ratcliff nearly half a century ago, in consequence of its being the resort of bad characters and facilitating the escape of thieves, since which time Bere Street, a short distance off, was formed, which made the old alley of no use to the public. The Board directed that the necessary steps be taken to obtain an Order of Justices to entirely stop up and abandon the alley.

ARTIZANS AND LABOURERS DWELLINGS' ACTS.

BROOK STREET AREA.

The Metropolitan Board of Works have demolished the whole of the houses comprised in the above area and have formed new thoroughfares, the carriageways and footways of which have been paved with new stone, and the necessary sewers and gullies have been formed, and the necessary lamps for lighting the area fixed.

TENCH STREET AREA.

The Metropolitan Board of Works have demolished the houses comprised in the above area situate in the Parish of St. George-in-the-East. A portion of Green Bank comprised within the area has been widened by the Metropolitan Board.

CABLE STREET AREA.

This area is still under the consideration of the Metropolitan Board of Works.

HOUSES BELONGING TO THE BOARD IN WHITE HORSE STREET.

The lease of the above premises being near its expiration notice to repair was served upon the lessee. Soon after the Metropolitan Board of Works served dangerous structure notices calling upon the owner to pull down and rebuild certain portions of the premises. Upon a representation by the lessee the Board resolved that if the lease was given up at that time, being some six months before the expiration thereof, the Board would undertake to do the structural works required by the Metropolitan Board, which works were afterwards carried out. The houses are now let by the Board to weekly tenants.

Bills in Parliament.

Petitions were presented to the House of Commons in favour of the Regent's Canal City and Docks Railway (Extension of Time) Bill, and against the Hyde Park Corner (New Street) Bill, and the Public Parks Works Bill.

Thames Communications.

The Metropolitan Board having resolved to apply to Parliament for powers to construct a tunnel communication under the Thames from Blackwall to Greenwich Marshes, this Board presented a memorial to the Metropolitan Board calling their attention to the Report of their Engineer submitted in November, 1882, recommending that a tunnel should be constructed from Shadwell to Rotherhithe, and also to the recommendation of the Select Committee of the House of Commons that a Subway should be constructed at or near Shadwell which would be central, and would best meet the wants and wishes of the inhabitants east of London Bridge, and praying the Metropolitan Board not to construct the proposed Blackwall Tunnel until a communication should have been established between the north and south sides of the river at or near Shadwell. The Metropolitan Board, however, deposited plans and sections, and a bill for powers to construct the Blackwall Tunnel, and Delegates were appointed by this Board to meet Delegates from other Districts to consider what action should be taken.

I am, GENTLEMEN,

Your most obedient Servant,

CHARLES DUNCH,

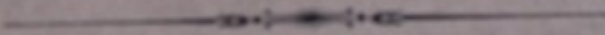
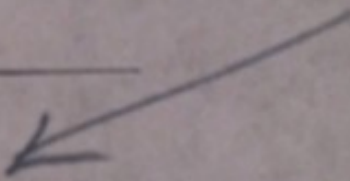
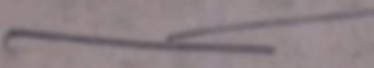
Surveyor of the Board.

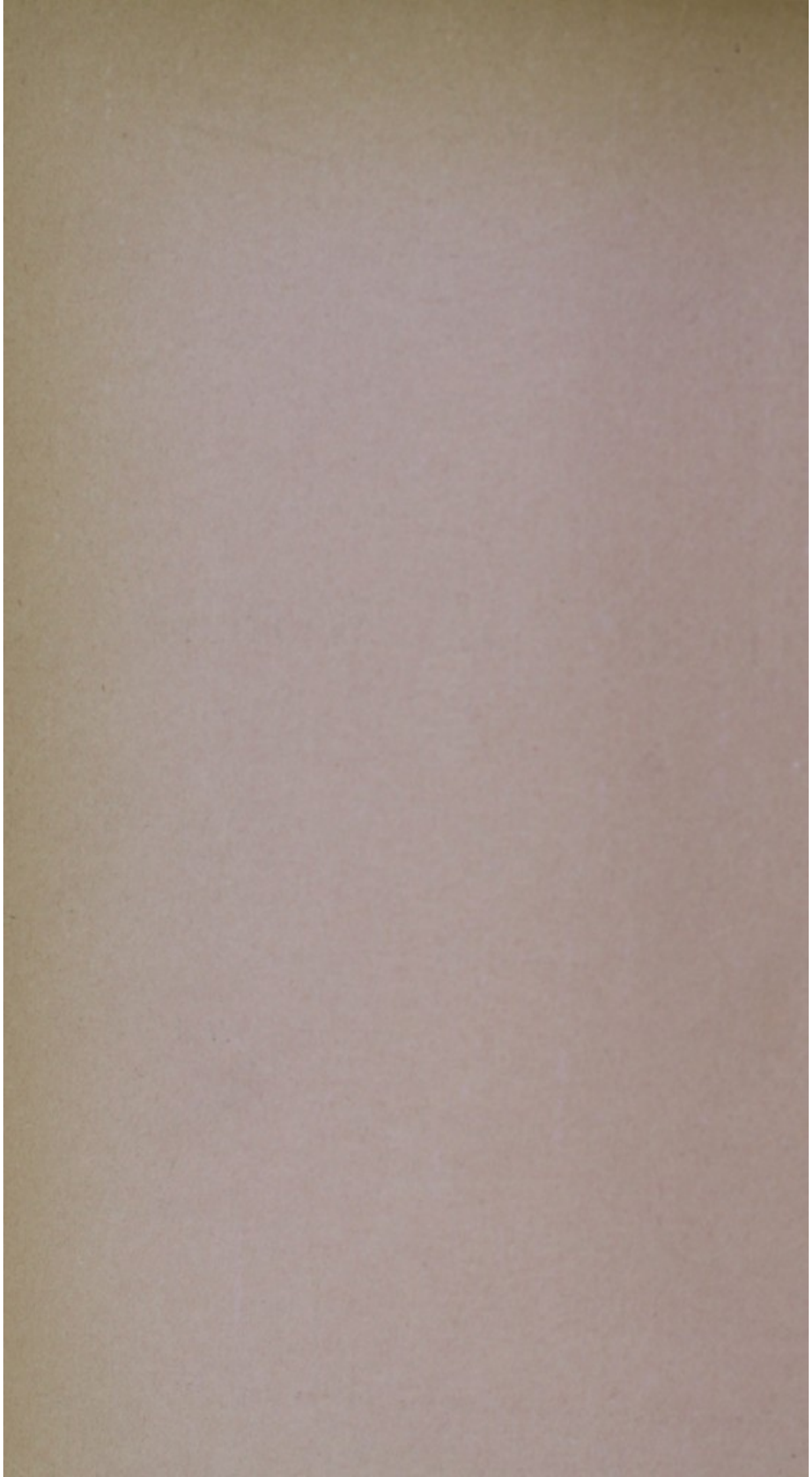


BOARD OF WORKS

FOR THE

LIMEHOUSE DISTRICT.



REPORT of the MEDICAL OFFICER of HEALTH for
the year 1886.






TO THE
BOARD OF WORKS
FOR THE
LIMEHOUSE DISTRICT.

GENTLEMEN,

I have the honour to submit to you my Report on the Health and Sanitary condition of the Limehouse District for the year 1886.

The Births registered in the District during that period numbered 2,016, giving the proportion of 34.4 births to 1,000 inhabitants, a number considerably below the average of the last ten years.

The Birth Rate of the Metropolis for the year was 32.3 per 1,000.

The Marriages registered in the District numbered 400, giving a proportion of but 13.6 persons married in 1,000 inhabitants. This is the lowest rate of which I possess any record, and is considerably below the average rate of the last ten years. The number of persons married in the Metropolis gave a proportion of 16.6 per 1,000.

The Deaths in the District during the year exclusive of those of non-residents which occurred in Public Institutions situated in the District, but inclusive of those of residents which occurred in Public Institutions situated beyond the limits of the District, numbered 1,470. The Rate of Mortality was 25 per 1,000, that of the Metropolis being 19.9 per 1,000, and of the Eastern Districts 22.5 per 1,000.

The excess of the Death Rate of the District over the Death Rate of the Metropolis extends through all classes of disease: thus, the Death Rate in the Metropolis from the principal Zymotic diseases, such as Meales, Fever, Whooping Cough, and Diarrhoea was 2.69, while in the District it was 3.82. From Constitutional Diseases such as Cancer and Consumption it was 3.89, against 5.23 in the District. From Developmental Diseases it was 1.21, against 1.87. From Local Diseases, i.e., Diseases of Nervous System, of Circulatory System, of Respiratory System, &c., it was 10.10, against 11.87, and from Violence it was .68, against 1.10 in the District.

This result is the outcome of the conditions under which a large proportion of the inhabitants of your District exist; conditions which for many of them mean indifferent lodging, insufficient food and clothing, hard toil, and exposure to the elements.

The Deaths of Children under one year constituted 24.4 per cent., and those of Children under 5 years 44.2 per cent. of the total mortality.

DISEASES OF A ZYMOTIC CHARACTER caused 239 deaths, of which 39 were due to Measles, 23 to Scarlet Fever, 56 to Whooping Cough, 7 to Diphtheria, and 18 to Enteric Fever. The Rate of Mortality from the seven principal diseases of this class was 3.8 per 1,000.

CONSTITUTIONAL DISEASES caused 307 deaths, and included 31 from Cancer, 69 from Tabes Mesenterica, 36 from Tubercular Meningitis, and 143 from Phthisis. The Death Rate in this class was 5.23 per 1,000.

DEVELOPMENTAL DISEASES caused 110 deaths; and included 34 from Premature Birth, and 73 from Old Age. The Death Rate in this class was 1.87 per 1,000.

LOCAL DISEASES caused 696 deaths, and included 24 from Inflammation of the Brain, 60 from Apoplexy, and Allied Diseases, 35 from Convulsions, 77 from Heart Disease, 219 from Bronchitis, and 114 from Pneumonia. The Rate of Mortality in this class was 11.87 per 1,000.

VIOLENCE caused 65 deaths, and included 20 from Fractures and Contusions, 8 from Burns, 25 from Drowning, and 10 from Suffocation. The Rate of Mortality in this class was 1.10 per 1,000.

There was an entire absence of Smallpox in the District. Scarlatina prevailed more or less throughout the year. There were several cases of Enteric Fever in the Autumn, more especially in the neighbourhood of Butcher Row and the Orchard, while there was a marked diminution in the number of cases of Diphtheria. There was, however, in the Autumn a severe outbreak of Measles, affecting principally that portion of your District which lies eastward of the Burdett Road. In the interest of the public Health, I deemed it advisable to recommend the closing of the Infant Department of the Board School in the locality, which was done, after which the outbreak subsided.

Sanitary Work, &c.

The usual routine inspection of houses was carried on during the year ; 3,165 houses having been inspected, and 2,456 orders for the amendment of the same having been issued. The supply of water to closets was prosecuted steadily, and not without protest on the part of the landlords, with the result that it was obtained in 320 cases. Seven hundred houses were registered under the provisions of 35th section of the Sanitary Act of 1866. The Bakehouses, Cowhouses, and Slaughterhouses were regularly inspected. Under the provisions of the Canal Boats Act, 27 Canal Boats were registered, and 104 inspected.

Besides these, certain Factory Nuisances were, on more than one occasion, the subject of the Board's consideration ; among them I may mention the Brooksby Chemical Works, Bow Common ; the Animal Charcoal Works, New Gravel Lane, Shadwell, and Mr. Fisch's Furrier Premises in Gill Street.

The Brooksby Chemical Works, had, at the time it became the subject of complaint, ceased to be a manufacturing premises for at least nine months ; previous to that time the place had been used as a manufactory of manure, chiefly from blood, and, as such, it was the subject of numerous complaints. Then it was used as a depôt for putrid fish, which was collected in various parts of London, brought hither, discharged on the ground, and placed in tanks for conveyance elsewhere ; naturally the nuisance was very great at times, and at length, the owner on July 7th, in consequence of the action of this Board, gave an undertaking to vacate the premises in a month ; the premises were not vacated in anything like a month, but the operations were carried on in such a way as to cause far less nuisance, and occupation was given up about the middle of September. As no manure had been made on the premises for nine months, the license held from the Metropolitan Board of Works expired, and is not renewable.

The Animal Charcoal Works in New Gravel Lane is an old offender, but complaints regarding it during the year were few and

trivial. New plant had been put up, and the process was not so offensive as it had been, but there was a tendency to accumulate bones on the premises far in excess of the quantity required for a reasonable term of manufacture, and the premises had to be watched, and warnings given from time to time.

As regards the Furrier's Premises in Gill Street, the nuisance complained of, arose partly from dust, partly from smoke, and partly from smell. The dust arose from the beating of the skins which had had Mahogany sawdust trodden into them, the smoke from the burning of refuse sawdust, and the smell from the storing of fleshings. Measures have been adopted which appear to be successful, at least for the present, but without care, a repetition of the nuisance might easily occur.

In October the Metropolitan Board intimated that they intended to apply to Parliament in the ensuing session for powers to deal with the Cable Street area under the provisions of the Artisans and Labourers' Dwellings Acts. My official representation under these Acts was dated October 3rd, 1883, and you are doubtless aware of the ultimate proceedings with regard to it: You can therefore understand that it was a source of gratification to me, after all the vicissitudes of that representation, to find that my efforts to purge the District of a singularly unsavoury and unhealthy locality, promised at last to be crowned with success.

Cow and Slaughter Houses.

These structures were again licensed after conforming with the requirements of the Board.

Sale of Food and Drugs' Act.

One hundred and one samples of Food were examined at the Laboratory. Of these 12 were Breads, 3 of which were adulterated with Alum. Twenty-nine were Milks, of which 3 were adulterated

with water in the proportions of 7, 9 and 15 per cent. Five were Butters of which one was adulterated with 78 per cent. of foreign fat. Four were Flours, all genuine. Nine were Mustards of which one was adulterated with 40 per cent. of Wheat Flour, and coloured with Turmeric. Ten were Beers all satisfactory in quality. Ten were Peppers of which two were adulterated with 50 per cent. of Rice Starch. Four were Arrowroots, all genuine, and ten were Coffees, all genuine; seven were Cocoas, of which 5 were mixed with Sugar and Starches in variable quantities.

I have pleasure in acknowledging the great assistance I have received from the Inspectors, who have carried out my instructions in an intelligent and satisfactory manner.

I have the honour to remain,

GENTLEMEN,

Your most obedient Servant,

G. A. ROGERS,

*Medical Officer of Health and
Public Analyst.*

Board's Offices:—

WHITE HORSE STREET,

September, 1887.

TABLE I.

Shewing the Population, Inhabited Houses, Births, Deaths, and Marriages for the Year 1886, and 10 years preceding.

Population estimated at the middle of the year 1886.	Approximate No. of Inhabited Houses in District.	Births.	Deaths.	Marriages.
58,600.	8,012.	2,016.	1,470.	400.
1885	8,012	2,124	1,490	408
1884	8,012	2,202	1,369	449
1883	8,012	2,153	1,478	494
1882	8,012	2,275	1,469	468
1881	8,012	2,176	1,428	468
1880	8,012	2,210	1,540	484
1879	7,820	2,286	1,554	504
1878	7,820	2,240	1,484	544
1877	7,820	2,146	1,513	527
1876	7,820	2,167	1,518	593
Average of 10 yrs. 1876—85	7,935	2,197	1,484	493

NOTES.

1. Population at Census, 1881, 58,543.
2. Area in Acres, 576.
3. Average No. of Persons in each house at Census 1881, 7.3.

TABLE II.

Shewing the Annual Birth Rate, Rate of Mortality, Death Rates among Children, and Deaths in Public Institutions, for the year 1886, and 10 years preceding.

	Birth rate per 1,000 of the Population.	Annual Rate of Mortality per 1,000 living.	Deaths of Children under 1 year : per centage of Total Deaths.	Per centage of Deaths of Children under 1 year to registered Births.	Deaths of Children under 5 years : per centage of Total Deaths.	Total number of Deaths in Public Institutions.
1886	34.4	25.0	24.4	17.8	44.2	249
1885	36.0	25.4	23.0	16.2	42.0	376
1884	37.0	23.3	22.4	13.9	42.5	249
1883	38.0	25.0	25.0	16.5	46.4	247
1882	38.8	25.0	24.0	15.0	47.0	237
1881	37.0	24.3	23.2	14.8	41.7	258
1880	38.0	26.2	24.0	17.0	47.5	250
1879	36.0	25.9	25.0	17.0	45.7	250
1878	35.0	24.7	25.0	16.0	45.0	255
1877	37.0	25.0	24.0	16.0	45.0	269
1876	37.0	24.5	29.0	17.0	53.0	250
Average of 10 yrs. 1876-85.	36.98	24.93	24.46	15.94	45.58	289.0

TABLE III.

Deaths Registered from All Causes during the Year, 1886.

NOTE.—The Deaths of non-Residents occurring in Public Institutions situated in the District are excluded, and the Deaths of Residents occurring in Public Institutions situated beyond the limits of the District are included.

Cause of Death.	AGES.														Total under 5 Years.	TOTAL.	55 to 60
	Under 3 months.	0 to 1	1 to 5	5 to 15	15 to 25	25 to 35	35 to 45	45 to 55	55 to 65	65 to 75	75 to 85	85 and upwards.					
CLASSES.																	
I. Zymotic Diseases	80	115	..	18	6	6	2	3	1	3	5	239	1	..	
II. Parasitic Diseases	1	1	
III. Dietic Diseases	2	1	..	2	5	
V. Constitutional Diseases	75	46	..	22	19	38	36	37	20	14	307	1	..	
V. Developmental Diseases	37	4	12	44	13	..	110	
VI. Local Diseases	112	290	..	72	57	35	59	71	113	95	43	4	..	696	48	..	
II. Violent Deaths	10	7	..	8	9	9	7	7	1	5	2	65	
III. Not specified or ill-defined ..	43	4	47	
TOTALS	360	290	..	72	57	88	106	118	139	129	94	17	..	1470	66	..	
Class 1. ZYMOTIC DISEASES																	
Order 1.—Miasmatic.																	
1 Smallpox { Vaccinated	
{ Unvaccinated	
{ No Statement	
2 Measles	8	26	..	5	39	
3 Scarlet Fever (Scarlatina)	2	17	..	4	23	
4 Typhus Fever	
5 Whooping Cough	11	43	..	2	56	
6 Diphtheria	2	4	..	1	7	
7 Simple Continued Fever	1	1	
8 Enteric or Typhoid Fever	3	..	5	5	3	1	1	18	
9 Other Miasmatic Diseases	
Order 2.—Diarrheal Diseases.																	
1 Diarrhea, Dysentery	46	22	2	..	1	1	3	5	80	1	..	
Order 3.—Malarial Diseases.																	
1 Remittent Fever	
2 Ague	
Order 4.—Zoonotic Diseases.																	
1 Cowpox	
2 Other Diseases	
Order 5.—Venereal Diseases.																	
1 Syphilis	9	9	
Order 6.—Septic Diseases.																	
1 Erysipelas	2	1	3	
2 Pyæmia, Septicæmia	1	1	1	3	
Class 2. PARASITIC DISEASES.																	
1 Thrush	1	1	
Class 3. DIETIC DISEASES.																	
1 Want of Breast Milk	2	2	
2 Chronic Alcoholism	1	1	
3 Delirium Tremens	1	..	1	2	
Class 4. CONSTITUTIONAL DISEASES																	
1 Rheumatic Fever	
2 Rheumatism	6	2	2	2	..	1	13	
3 Gout	1	1	2	1	..	
4 Rickets	4	..	2	6	
5 Cancer	1	2	11	9	8	31	6	..	
6 Tabes Mesenterica	51	17	..	1	69	
7 Hydrocephalus	17	19	36	
8 Phthisis	4	5	..	13	15	34	32	25	9	6	143	8	..	
9 Scrofula	3	1	2	1	7	
10 Purpura	
11 Other Diseases	
Class 5. DEVELOPMENTAL DISEASES																	
1 Premature Birth	34	34	
2 Atelectasis	1	1	
3 Congenital Malformations	2	2	
4 Old Age	4	12	44	13	..	73	2	..	
Class 6. LOCAL DISEASES.																	
Order 1.—Nervous System.																	
1 Inflammation of Brain	5	2	2	3	4	5	2	1	24	
2 Apoplexy	1	4	5	7	19	15	8	1	..	60	4	..	
3 Insanity	2	2	
4 Epilepsy	1	1	
5 Convulsions	29	6	35	
6 Laryngismus Stridulus	2	2	4	
7 Paralysis Agitans	2	2	
8 Other Diseases	2	1	3	1	7	

SUMMARY OF TABLE.

	No. of Deaths.
I.—SPECIFIC FEBRILE, OR ZYMOTIC DISEASES.	
1. Miasmatic Diseases	144
2. Diarrhoeal "	80
3. Malarial "	
4. Zoogenous "	
5. Venereal "	9
6. Septic "	6
II.—PARASITIC DISEASES	1
III.—DIETIC DISEASES.....	5
IV.—CONSTITUTIONAL DISEASES.....	307
V.—DEVELOPMENTAL DISEASES	110
VI.—LOCAL DISEASES.	
1. Diseases of Nervous System.....	135
2. Diseases of Organs of Special Sense	
3. Diseases of Circulatory System	84
4. Diseases of Respiratory System	360
5. Diseases of Digestive System	69
6. Diseases of Lymphatic System.....	
7. Diseases of Gland-like Organs of Uncertain Use	
8. Diseases of Urinary System	34
9. Diseases of Reproductive System.....	
(a). Diseases of Organs of Generation	2
(b). Diseases of Parturition	4
10. Diseases of Bones and Joints	5
11. Diseases of Integumentary System	3
VII.—VIOLENCE.	
1. Accident or Negligence.....	64
2. Homicide	
3. Suicide.....	1
4. Execution	
VIII.—ILL-DEFINED AND NOT SPECIFIED CAUSES. ...	47
TOTAL	1470

TABLE IV.

Shewing the Mortality from certain classes of Diseases, and proportions to Population, and to 1,000 Deaths, 1886.

	Total Deaths.	Deaths per 1,000 of Population.	Proportion of Deaths to 1,000 Deaths.
1. Seven Principal Zymotic Diseases	224	3.8	152
2. Pulmonary Diseases (<i>other than Phthisis</i>)	360	6.1	245
3. Tubercular Diseases	225	3.8	153
4. Wasting Diseases of Infants	152	2.5	103
5. Convulsive Diseases of Infants	89	1.5	60

NOTES.

1. Includes Smallpox, Measles, Scarlet Fever, Diphtheria, Whooping Cough, Fever, and Diarrhœa.
3. Includes Phthisis, Scrofula, Rickets, and Tabes.
4. Includes Marasmus, Atrophy, Debility, want of Breast Milk, and Premature Birth.
5. Includes Hydrocephalus, Infantile Meningitis, Convulsions, and Teething.

TABLE V.

Shewing the Number of Deaths from the seven principal Zymotic Diseases,
in the 10 Years, 1876 to 1885 and in the Year 1886.

Disease.	1876	1877	1878	1879	1880	1881	1882	1883	1884	1885	Annual Average of 10 years. 1876-1885.	Proportion of Deaths to 1000 Deaths in 10 years. 1876-1885.	1886	Proportion of Deaths to 1000 Deaths in 1886.
Smallpox ...	13	89	63	2	20	42	17	6	29	22	30.3	20.5	0	0
Measles	36	71	31	49	37	52	25	57	7	87	45.2	30.6	39	26.5
Scarlet Fever	43	20	16	71	112	22	65	84	74	32	53.9	36.5	23	15.0
Diphtheria...	4	5	9	11	8	8	4	18	4	20	9.1	6.1	7	4.8
Whooping Cough ...	31	47	81	43	62	41	113	30	52	49	54.9	37.1	56	38.0
Fever.....	22	22	21	18	17	26	17	14	18	13	18.8	12.7	19	12.9
Diarrhoea ...	65	66	64	44	56	55	42	45	53	42	53.2	36.0	80	51.4
Total	214	320	285	238	312	246	283	254	237	265	265.4	179.5	224	151.6
London	12565	12365	14734	12256	13681	13811	13553	10801	13629	1201	12865	158	11122	135

INSPECTORS' REPORT OF THE SANITARY WORK, &c.,

Completed in the year ending December 31st, 1886.

SANITARY WORK, &c.	PARISHES.		
	Limehouse.	Ratcliff, Shadwell, and Wapping.	Total.
No. of Houses, Premises, &c., inspected	1990	1175	3165
Orders issued for Sanitary Amendments of Houses and Premises	1408	1048	2456
Houses and Premises Cleansed, Repaired and Whitewashed	187	88	275
Houses Disinfected after Infectious Diseases.....	28	40	68
House Drains Repaired, Cleansed, &c.	154	140	294
" " Trapped or Ventilated.....	91	40	131
Privies and Water Closets Repaired, Cleansed, &c.	247	40	287
" " supplied with Water ...	190	130	320
" " New provided.....	23	6	29
Dust Bins—New provided	36	14	50
" Repaired and Covered, &c.	20	10	30
Yards Paved and Defective Paving Repaired	166	50	216
Water Supply Amended	120	12	132
No. of Lodging Houses Registered under 35th Clause of Sanitary Act, 1866	700	—	700
No. of Dust Complaints received and attended to	598	448	1046
Removal of Accumulation of Dung, Animal and other Refuse.....	32	12	44
Removal of Animals improperly kept	3	3	6
Bakehouses Regularly Inspected	29	20	49
Licensed Cow Houses "	6	9	15
" Slaughter Houses "	5	—	5
Legal Proceedings Instituted	11	13	24
Sundry Repairs, Notices, &c.	111	31	142
Canal Boats Inspected.....	104	—	104

GEORGE HURLOCK,

THOMAS STACE,

Inspectors.

TABLE VII.

showing the Localities in which certain Diseases of a Zymotic character occurred during the year 1886.

LOCALITY.	Small-pox.	Scarlatina	Enteric.	Diphtheria.
Am road-street	—	—	1	
Amalls-buildings	—	1		
Am butcher-row	—	4	4	
Am romley-street	—	1		
Am rook-street	—	2		
Am elgrave-street	—	—	1	
Am childrens' Hospital	—	13	4	3
Am dable-street	—	1	1	1
Am onder-street	—	1		
Am church-street	—	1		
Am church-row	—	1		
Am commercial-road	—	0	1	
Am Dorset-street	—	1		
Am Devonport-street	—	1		
Am Eastfield-street	—	—	1	
Am Farrance-street	—	—	1	
Am Galt-street	—	6		
Am High-street (Shadwell)	—	2	—	1
Am Hammer and Crown-court	—	—	2	
Am James-place	—	1		
Am James-street	—	1		
Am John-street	—	—	1	
Am Juniper-street	—	2		
<i>Carried forward</i>	—	39	17	5

TABLE VII. (*Continued.*)

LOCALITY.	Small-pox.	Scarlatina.	Enteric.	Diphtheria.
<i>Brought forward</i>	—	39	17	5
Love-lane	—	1		
Mays-row	—	—	1	
Market-street	—	1		
Mercer-street	—	1		
Market buildings	—	2		
New Gravel-lane	—	2		
Northey-street	—	1	3	
North-street	—	—	3	
Narrow-street	—	3		
Orchard	—	—	5	
Peabody-square	—	9		
Rhodeswell-road	—	1		
Shadwell-green	—	1		
Stepney-causeway	—	—	2	
Salmon-Lane	—	1		
Thomas-street (Ratcliff)	—	2		
Thirza-street	—	4		
Thomas-street (Limehouse)	—	1		
Victoria-street	—	1		
White Horse-street	—	1	—	2
York-square	—	4		
TOTAL	—	75	31	7

TABLE VIII.

LIST OF ARTICLES DISINFECTED IN THE APPARATUS
BELONGING TO THE BOARD,

DATED FROM JANUARY 1ST TO DECEMBER 31ST, 1886.

Articles.	January.	February.	March.	April.	May.	June.	July.	August.	September.	October.	November.	December.	TOTAL.
beds	5	8	2	6	4	6	2	4	6	17	12	7	79
pillows	12	4	6	7	6	14	5	9	12	32	17	11	135
blankets ...	11	6	4	8	8	10	4	12	14	31	19	6	133
bolsters	7	6	1	4	3	5	1	4	5	15	7	5	63
pillows	10	16	4	14	8	12	4	10	8	27	18	12	143
quilts	10	12	8	3	4	12	2	8	12	16	11	4	102
mattresses...	12	10	4	8	10	12	4	9	12	26	14	12	133
linens	96	78	90	84	96	99	37	32	33	179	152	87	1063
Total.....	163	140	119	134	139	170	59	88	102	343	250	144	1851

TABLE IX.

1886.

LICENSED COW HOUSES.

LIMEHOUSE.

NAME.	ADDRESSES.
Mr. Thomas Gerrard Fletcher,	314, Burdett Road.
„ Joseph Busby,	Dakin Street.
Messrs Philip and Edward Abbott,	44, Gun Lane.
Mr. David Dudlyke,	15, Maroon Street.
„ A. E. Grout,	162, Rodeswell Road.
„ Rees Jones,	5 & 6. Ropemaker's Fields.
„ William Dean,	25, Turner's Road.

RATCLIFF.

Mr. Charles Warman,	Railway Arch, James Street.
„ Charles Toms,	50, Love Lane.
„ Charles Toms,	63, Brook Street.
„ James Alcock,	Rear of 37, Stepney Causeway.
„ George Thorpe,	49, London Street.
Messrs. John and William Morris,	37, White Horse Street.

SHADWELL.

Mr. James Mason,	Sage Street.
„ George Heath,	Lower Shadwell.
Mrs. Mary Ann Boorman,	3, Victoria Street.

SLAUGHTER HOUSES.

LIMEHOUSE.

Mr. James Tunbridge,	160, White Horse Street.
„ Frederick Peachy,	32, West India Dock Road.
„ Gottlieb Carl Rathman,	211, Salmon Lane.
Mrs. Elizabeth Peace,	78, Limehouse Causeway.
Mr. Archibald Brown,	26, Three Colt Street.

RATCLIFF.

Mr. William Samual Willson,	159, White Horse Street.
„ William Henry Dunbar,	46, White Horse Street.

SHADWELL.

Mr. Thomas Stephens,	6, High Street.
----------------------	-----------------

TABLE X.

1886.

BAKEHOUSES.

LIMEHOUSE

NAME.	ADDRESSES.
Mr. H. Schmalzlen,	22, Gill Street.
" C. Baldwin,	821, Commercial Road.
" Hammond, (not used)	341, Burdett Road.
" C. L. Kemp,	13, East India Road.
" J. Draude,	31, Repton Street.
" R. Hoar,	3, Repton Street.
" E. Nafzger,	137, Eastfield Street.
" J. Simpson,	21, Halley Street.
" P. Baussman,	12, Parnham Street.
" J. Coote,	45, Thomas Street.
" E. Badcock,	85, Locksley Street.
" J. Few,	132, Rhodeswell Road.
" C. Ridler,	131, Salmon Lane.
" M. A. Glass,	145, Salmon Lane.
" J. Faber,	181, Salmon Lane.
" C. Rathmann,	209, Salmon Lane.
" W. Wagner,	7, Limehouse Causeway.
" J. C. Chapman,	68, Limehouse Causeway.
" E. Lagenback,	40, Limehouse Causeway.
" W. Ramsden,	49, Maroon Street.
" J. A. Siebert,	93, Three Colt Street.
" J. W. Domm,	146, White Horse Street.
" J. Parker,	12, Dalgleish Street.
" W. H. Pearce,	77, Three Colt Street.
" E. Springer,	51, Three Colt Street.
" Miller,	87, Three Colt Street.
" Rudolph Voelter,	71, Salmon Lane.
" J. Watson,	36, Three Colt Street.
Mr. Robert Wickett, 56, Three Colt Street, Confectioner.	

RATOLIFF.

Mr. Prummer,	105, White Horse Street.
" J. Gilruth,	42, White Horse Street.
" J. Sadler,	147, White Horse Street.
" J. Jolley,	631, Commercial Road.
Mrs. Freinsner,	13, Medland Street.

TABLE X. (*Continued.*)

RATCLIFF.

NAME.	ADDRESSES.
Mrs. Siebert,	119, Broad Street.
" Bretton,	27, Hardinge Street.
Mr. Digler,	415, Cable Street.
Mrs. Reaman,	13, Devonport Street.
Mr. Anderson,	59, Brook Street.
" Kuch,	91, Brook Street.
" Herzelman,	113, Brook Street.
Mrs. Ruth,	139, Brook Street.
Mr. Willicombe,	28, White Horse Street.
" Wright,	436, Commercial Road.
" Hammond,	508, Commercial Road.
" W. Reck,	5, Stepney Causeway.

SHADWELL.

Mr. Flood,	84, High Street.
Mrs. Green,	161, High Street.
Mr. Ullius,	47, High Street.
" Pettyfor,	278, Cable Street.
" Menzler,	5, King David Lane.
" Mileham,	40, New Gravel Lane.