

[Report of the Medical Officer of Health for Lewisham].

Contributors

Lewisham (London, England). Board of Works.

Publication/Creation

1874.

Persistent URL

<https://wellcomecollection.org/works/hsrua4wu>

Provider

London Metropolitan Archives

License and attribution

This material has been provided by City of London, London Metropolitan Archives where the originals may be consulted.

You have permission to make copies of this work under a Creative Commons, Attribution, Non-commercial license.

Non-commercial use includes private study, academic research, teaching, and other activities that are not primarily intended for, or directed towards, commercial advantage or private monetary compensation. See the Legal Code for further information.

Image source should be attributed as specified in the full catalogue record. If no source is given the image should be attributed to Wellcome Collection.



Wellcome Collection
183 Euston Road
London NW1 2BE UK
T +44 (0)20 7611 8722
E library@wellcomecollection.org
<https://wellcomecollection.org>

15-

400
FEB 12
74
Lewisham

THE REPORT

BY THE

35
26 JUNE 1874

BOARD OF WORKS

FOR

THE LEWISHAM DISTRICT

FOR THE YEAR

1872-3.

PUBLISHED BY ORDER OF THE BOARD.

Printed by

W. H. CROCKFORD, JUN., BLACKHEATH ROAD, AND LEWISHAM.

—
1874.



26 JUNE 1874

35

THE REPORT

BY THE

BOARD OF WORKS

FOR

THE LEWISHAM DISTRICT

FOR THE YEAR

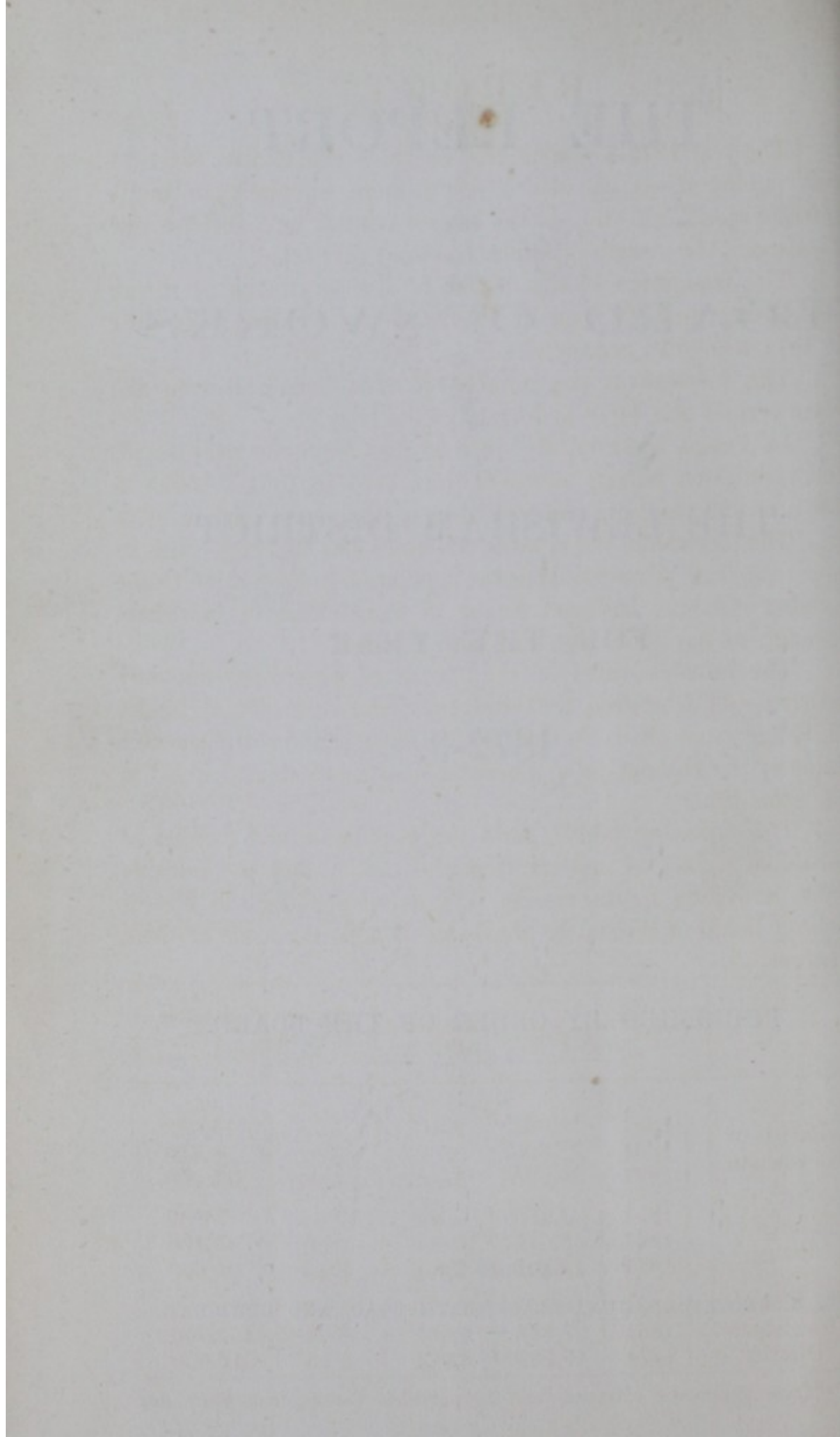
1872-3.

PUBLISHED BY ORDER OF THE BOARD.

Printed by

W. H. CROCKFORD, JUN., BLACKHEATH ROAD, AND LEWISHAM.

1874.



REPORT.

The year 1872-3—being that in which the Census for 1871 was published—is one which seems more especially to invite retrospection; and this is the more essential in a District like Lewisham, the growth of which has been very rapid.

The population of the Parish of Lewisham was 51·40 per cent. greater in 1861 than in 1851, and the increase from 1861 to 1871 was 60·14 per cent.

The increase in the number of inhabited houses in the same periods was 44·78 and 61·46 respectively.

In Penge, however, the increase has been far more rapid, the population having increased from 1169 in 1851 to 5015 in 1861, or 329 per cent., and to 13,202, or 163·25 per cent. in 1871.

The increase in the number of houses has in Penge been in much the same proportion, but the population in proportion to the number of houses has been denser in Penge than in Lewisham throughout the whole period of both decades.

The rateable value of the Parish of Lewisham has very nearly doubled between 1861 and 1871, and that of the Hamlet of Penge more than doubled in the same period; the rateable value of the District as a whole has also more than doubled in the same time.

The following table* gives the population and number of inhabited houses as appears from the Census, and the rateable value according to the county rate, as adopted by the Metropolitan Board of Works for the basis of apportionment of their charges.

	Year.	Population.	Inhabited houses.	No. of Inhabitants per house.	Rateable value (County rate.)
					£
Parish of Lewisham.	{ 1851	15,064	2,617	5·75	75,000
	{ 1861	22,808	3,789	6·02	108,800
	{ 1871	36,525	6,118	5·96	215,000
Hamlet of Penge.	{ 1851	1,169	153	7·64	5,889
	{ 1861	5,015	668	7·50	43,800
	{ 1871	13,202	1,956	6·23	95,000
The Lewisham District.	{ 1851	16,233	2,770	5·86	
	{ 1861	27,823	4,457	6·24	152,600
	{ 1871	49,727	8,074	6·15	310,000

* These figures are extracted from the published Census, from which full

In 1856, when the Metropolis Management Act came into force, the rateable value of the Metropolis was £11,283,663, and the rateable value of the Lewisham district was £138,100, or little more than one-hundredth (1·22 per cent.) of the whole. The relative values, taken from the Valuation Lists and County Rate Basis of Metropolitan counties, as issued by the Metropolitan Board in December, 1872, are for the whole Metropolis £20,287,709, and for the Lewisham district £407,639, or about one-fiftieth (2 per cent.) of the entire Metropolis.

Out of the fifteen Districts formed under the Metropolis Management Act, in 1856, the Lewisham District in rateable value was the smallest but three, viz., Fulham, Plumstead, and St. Olave's, Southwark; since that time the Lewisham District, whilst maintaining its position in excess of the three Districts mentioned, has outgrown the Districts of the Strand, Whitechapel, St. Giles's, Limehouse, St. Saviour's, and Holborn, and now stands sixth in importance as regards rateable value. The Lewisham District is also of greater rateable value than that of the majority of the twenty-three parishes in Schedule A. of the Act.

Such being the growth in population and general importance of the District, a corresponding increase in the expenditure for the purposes of local management must necessarily be expected, and a comparison of the balance sheets of the Board year by year from its constitution show that the demands of the District have more than kept pace with its growth, but a large proportion of the expenditure of the present and several previous years has been laid out in permanent works, the cost of which has been defrayed out of money borrowed for the purpose, and the repayment will be thrown over terms of years. Thus, whilst the accounts for the year show a total expenditure of nearly £43,000, the sum received from rates is little more than £33,000, and, notwithstanding a greatly increased expenditure, the burdens upon the ratepayers for all local purposes under the jurisdiction of the Board have not been, on the average, heavier during the past few years than at any previous period since the constitution of the Board.

Extracts as to the Lewisham District are appended to this Report. It will be seen that the figures quoted in the Report of the Medical Officer of Health are slightly inaccurate, they having been procured from the Registrars prior to the publication of the Census.

A new item has for the last two years appeared in the accounts of the Board, although not properly included in their expenditure, viz., the contribution of the District to the expenses of the School Board for London, and of the Elections of its members, amounting in the present year to £1704 15s. 8d.

An important question—as affecting the finances of the Board—was raised in the early part of the year by the South Eastern Railway Company; having regard to the great extent of land within this District for agricultural purposes, it was long recognized by the Board as a grievance to the occupiers of land that they should be charged under the General Purpose Rate to very heavy expenses incurred almost exclusively for the benefit of householders; the Board therefore resolved in May, 1870, under the advice of counsel, that they would exercise the provisions of the 159th section of the Metropolis Management Act, 1855, as regarded expenses of the following character, viz., dust collecting, road watering, kerbing, channelling, and paving foot-paths, and general improvements of a permanent character, and that the money required for such purposes should be raised by rates, in which “land used as arable, meadow, or pasture ground only, or as woodlands, orchard, market-garden, hop, herb, flower, fruit, or nursery ground,” should be assessed in the proportion of one-fourth part only of its nett annual value; thus placing land so occupied on the same footing as with respect to sewerage expenses, and redressing the grievance complained of by the farmers and other occupiers of land in the District.

The South Eastern Railway Company claim to be rated for their lines of railway on the lower scale, and at the Kent Quarter Sessions in April, 1872, they appealed against the rate; it was, however, confirmed, subject to a case for the opinion of the Court of Queen's Bench, and although the Company has not yet set the case down for hearing, the question raised has not been abandoned.

The same Company has also raised a similar question as to their chargeability to the Lighting Rate, and the importance of the questions at issue will at once be apparent when it is recollected that the rateable value of the railways in the District is upwards of £50,000, or nearly one-fourth the value of the entire rateable property.

BECKENHAM TONGUE OF LAND.

Perhaps the greatest achievement of the Board during the year has been the introduction and passing of a Bill in Parliament for effecting the drainage of the Beckenham Tongue of Land through the sewers of this District, and securing an adequate contribution from the Parish of Beckenham towards the cost of the sewers.

The Parish of Lewisham and Hamlet of Penge, constituting the Lewisham District, are severed from each other except at the extreme western boundary, near the Crystal Palace, by an intervening Tongue of Land within the Parish of Beckenham, not included in the Metropolis as defined by the Metropolis Management Acts. At the date of the constitution of the Board there were scarcely any sewers in the Hamlet, and such as there were only had an outfall into the Pool river, resulting in a serious nuisance as the number of inhabitants increased.

The attention of the Board was early (1857) directed to the necessity for constructing a sewer to convey the sewerage from Penge to the Ravensbourne and Sydenham main sewer at Bell Green, Lower Sydenham, and an arrangement was at that time contemplated for giving the intervening part of Beckenham the benefit of the sewer, and levying a contribution from their Parish towards its cost. The Board were, however, prevented from constructing a sewer by the Metropolitan Board withholding their assent to the same, they being advised that the Metropolis Management Act, 1855, did not empower Vestries and District Boards to construct sewers beyond the limits of the Metropolis.

In the same year (1857) the Metropolitan Board had under consideration a Bill for amending, in numerous particulars, the Metropolis Management Act, and this Board hoped to overcome the difficulty they were met with by the insertion in such Bill of a clause for including in the Lewisham District the intervening part of Beckenham, and making it—for all the purposes of the Act—part of the Hamlet of Penge. This course was, however, disapproved by the Metropolitan Board; but they introduced at the instance of this Board, a clause (Sec. 58) in the Bill which became law as the "Metropolis Management Amendment Act,

1862," enabling Vestries and District Boards to carry any sewers or work beyond the limits of the Metropolis, subject, however, to the consent of the Vestry of the Parish or place through which the work was to pass, but giving an appeal to the Secretary of State if the consent were withheld.

At this time (1862) the Board had for several years been engaged in defending an action brought against them by Mr. Cator, the owner of the greater part of the intervening land in Beckenham, for contaminating the Pool river with sewage; in which action an appeal to the House of Lords was then pending. Mr. Cator's agent opposed to the utmost the construction of the sewer as proposed, and the consent thereto of the Vestry of Beckenham was consequently withheld; but, on an appeal to the Secretary of State, an order was made by him for its construction. The Board availed themselves of this circumstance to bring about a compromise of the long pending litigation with Mr. Cator, by the terms of which each party paid their own costs; the sewer was slightly diverted from the line originally intended in order to suit Mr. Cator's views, and he waived all claim to compensation for injury as owner of the estate through which the sewer was to be laid.

The sewer was commenced in May, 1864, and completed in April, 1866, the total cost, including all incidental expenses, being £5580 6s. 7d. The Hamlet of Penge was thus connected with the Metropolitan sewerage system, but the evils resulting from a part of Beckenham, out of the Metropolis, intervening between Penge and Lewisham within it, were by no means removed; for the sewer was required by the Metropolitan Board to be maintained for the exclusive use of the Lewisham District, and the rapid increase of buildings on the Tongue of Land, all of which drained into the Pool river, soon revived the nuisance, which year by year became more intolerable.

Memorials were again and again presented by this Board to the Metropolitan Board, urging them to obtain powers to include the Tongue of Land in the Metropolis, and thus enable it to be drained into the sewer which had been constructed and would answer the purpose—but all without avail.

Applications of a similar character were also made to the Metropolitan Board from several other outlying districts, urging

them to permit the drainage into the Metropolitan sewerage system of parts of parishes beyond the Metropolitan boundary, and the general question was fully considered by the Board, but their Engineer reported against the admission of any ex-Metropolitan parishes except Hornsey and Beckenham. Still, however, nothing was done to admit either.

In the year 1869 the nuisance had grown so intolerable that this Board, in self defence, were constrained, as a temporary measure, to permit the drainage of a large number of houses on the Beckenham Tongue to be connected with their sewer, and entered into agreements with two public companies, owners of estates, for such purpose. This concession almost wholly abated the nuisance, but an appeal having been made by the inhabitants to the Secretary of State, he directed an Inquiry to be instituted into the subject under powers then vested in him for the purpose.

The Inquiry was held at the Penge Parochial Offices on the 28th February, 1870, when it was proposed that the Tongue of Land should be formed into a Special Drainage District under the Sewage Utilization Acts and, subject to the approval of the Metropolitan Board, that an agreement should be entered into between the Vestry of Beckenham and this Board, by which the area in question should be drained into the Board's sewers, the Parish of Beckenham being charged a fair proportion of the cost of their construction and maintenance.

The general terms were approved by this Board and also by the Vestry of Beckenham, but when the details of the arrangement came to be considered, difficulties in negotiation arose, and the Metropolitan Board required that the proposed agreement should have the sanction of Parliament.

In the mean time the necessity for some comprehensive scheme of drainage for the whole Parish of Beckenham had been urged by many of its inhabitants, and an Engineer had been consulted, who projected a scheme by which the greater portion of the parish was to be drained by means of sewage farms and the Tongue of Land to be connected with the Metropolitan system of sewers. The scheme was accepted by the Beckenham Vestry, and the necessary parliamentary notices were issued accordingly in November, 1870, and a Bill prepared for introduction into Parliament in the then next session for effecting the twofold

object in view; but in the following February (1871) the Bill was abruptly withdrawn by direction of the Vestry, without notice to the Board or any explanation, either then or at any subsequent time.

The Board at once resolved to urge upon the Secretary of State the necessity for re-opening the Inquiry, but on the faith of representations made on behalf of the Beckenham Vestry that the withdrawal of the Bill was due to objections to its general, rather than special object, and that there was still a sincere desire on the part of the parish authorities to carry the proposed arrangement with this Board into effect, negotiations were re-opened with the Vestry with that object.

In the session of 1870-1, however, the jurisdiction under which the Secretary of State had acted was, by "The Local Government Board Act, 1871," transferred to the Poor Law Board, under the name of the Local Government Board, and by the delays and difficulties consequent upon such change of jurisdiction, the Board were prevented from applying to Parliament in the session of 1871-2. In that session "The Public Health Act, 1872," was passed, by which the authority of the Beckenham Vestry under the Sewage Utilization Acts was taken from them and vested in the Guardians of the Bromley Union as the rural sanitary authority. The Board, however, were determined not to lose the opportunity of another session of Parliament in putting an end to the gratuitous use by Beckenham of their sewers; and immediately on the Public Health Act being passed, they resumed with the Bromley Guardians the negotiations which had been carried on with the Vestry, and notwithstanding urgent appeals by the Guardians for delay, the Board removed all doubt which might have existed as to their intentions by passing a resolution on the 7th November, 1872, that all sewers and drains in the Parish of Beckenham flowing into sewers vested in the Board should be disconnected therefrom on the 15th of the same month, unless in the meantime the terms of arrangement then recently proposed were accepted, or some counter proposal were made by the Guardians in the spirit of such arrangement, and the necessary preliminary steps were taken for an application to Parliament to sanction the same.

Under this pressure the Guardians consented to concur with

the Board in introducing a Bill in Parliament for effecting the object desired, and the necessary parliamentary notices were published for such purpose.

No sooner, however, was this done than the objection was started by the Guardians that they were not authorized to make such an application to Parliament, and in the event of the Bill not passing they might be rendered personally liable for the costs incurred, they therefore withdrew themselves as promoters of the Bill, and not only so, but most strenuously opposed it before the Committee of each House of Parliament.

The present report being in respect of the year ending Lady-day, 1873, this subject cannot be continued without anticipation and trenching upon the proceedings of the year 1873-4. It is, however, unnecessary to go into particulars of the hardly fought battle between the Board and the Guardians over all the more important clauses of the Bill—first in the Lords, and afterwards in the Commons—but it will be sufficient to record that the Beckenham Sewerage Act, 1873, provides as an equivalent for the advantage of participation by the Beckenham Tongue of Land on the Metropolitan Sewerage System, for the payment of the following sums and continuing charges :—

To the Lewisham Board, £1062 10s. on the 25th of March, 1874, and a yearly sum equal to one half-penny in the pound on the rateable value of the Tongue of Land called in the Act the Beckenham Sewerage Area.

To the Metropolitan Board, £2312 10s. on the 25th of March, 1874, of which sum £1062 10s. is divisible between the Parishes who contributed to the cost of construction of the Ravensbourne and Sydenham Sewer, the apportioned part of such amount receivable by Lewisham being £618 6s. 2d.

And yearly sums to provide for the interest and sinking fund of money borrowed for main drainage purposes, and also to provide for the maintenance of the main drainage system, proportioned to the rateable value of the area to the metropolis.

The Board have, by formal resolution, tendered their thanks to James Richard Lloyd, Esq., the representative of the Plumstead and Lewisham Districts, at the Metropolitan Board, for the valuable services rendered by him in the very protracted negotiations—not only between this Board and the Metropolitan Board—

but also between this Board and the Bromley Guardians, on the subject, as well prior to the introduction of the Bill, as, during its passage through the Houses; and they feel that the present report would be incomplete unless it contained a recognition of such services.

It was contended by the opponents of this Bill, that the Penge and Bell Green sewer was faulty in its construction, and insufficient for the drainage of the additional area proposed to be connected with it; but the sewer had, in fact, for three years, received all the sewage of the area included under the Bill, and, as regarded any insufficiency in construction, this Board consented to introduce a clause in the Bill, binding them to put the sewer into an efficient state of repair before the 25th of March, 1874, and so to maintain it.

LEWISHAM BRIDGE.

A great improvement has also been accomplished in the present year in the re-building of Lewisham bridge, and the Board do not the less regard this as practically their work, because it is a County-bridge, and has been re-built under the order of the General Sessions of the County of Kent.

So long ago as 1864, drawings for a new bridge were prepared under the direction and at the expense of the Board, and submitted by them to the General Sessions of the County, but, although they approved the proposed work, they offered only £100 towards an estimated outlay of £2,400, and the proposal to re-build the bridge was for a time abandoned.

In order in some measure to mitigate the danger and inconvenience of the old bridge, the Board shortly afterwards removed the raised footpath which was on one side only, making the whole width of the bridge available for carriages, and constructed a temporary wooden footpath outside the southern wall of the old bridge.

The danger and inconvenience of the old bridge increasing year by year, the Board, at the close of 1870, recurred to the subject, and having prepared plans for a modified improvement of the bridge, estimated to cost £800, again memorialized the Sessions on the subject, and an order was made by the Court in June, 1871, authorising the Board to widen and improve the

bridge in the manner proposed, and agreeing to contribute £200 towards the cost.

It being optional with the Sessions whether they would or not rebuild the bridge, the Board were prepared to accept this offer if they could succeed in obtaining a material contribution from the Metropolitan Board, and an application was made to them accordingly; but they regarded the rebuilding of the bridge as a County liability, and while they fully recognized the necessity for the work, were advised that it was one which they were not authorised to carry out, and declined to contribute towards it. The Board were not, however, deterred by this decision, but again, in October, 1871, memorialized the Sessions, and on this occasion were supported by a memorial from the Plumstead Board of Works and by the advocacy of Mr. Lloyd, as the representative of the two districts at the Metropolitan Board of Works. This, the third, application was successful, a resolution being passed, on the motion of the noble Chairman (Lord Romney), that the County Surveyor should be instructed to prepare plans and estimates in the usual way and take steps for the rebuilding of the bridge. Appended to this report are copies of the memorials of this Board and also of the Plumstead Board.

The bridge was commenced in August, 1872, and completed in March, 1873.

LADYWELL LANE.

The improvement in this road, between the High Street of Lewisham and the Ladywell Railway Station, by which a dangerously narrow winding road, in some places not 15 feet in width, was straightened and widened to forty feet throughout, was effected by the purchase of a strip of the Vicarage premises on the north side and the purchase of the Brockley Cottages (subsequently resold), less the gardens, and a strip of Church Meadow on the south side. The improvement was completed during the present year by the payment to this Board by the Metropolitan Board of £850 as their contribution to the cost of the work.

SYDENHAM GREEN.

This picturesque open space has been so long enjoyed by the public that the inhabitants have with great difficulty been in-

duced to believe it to have been private property for upwards of half a century, and that the exercise of such rights over it might have been claimed at any time within such period.

The neighbourhood has of late years so rapidly urbanised as to have given such right a considerable value, and it has been recently proposed to enclose the whole of the ground, ignoring any public right over the footpath which has immemorially existed along the boundary of the old enclosure. This, however, the Board are prepared to maintain; and, although, upon high legal authority, they regard it as altogether impracticable to continue the open space in its former state, they have been engaged in very protracted negotiations with the owner of the Estate and the London, Brighton, and South Coast Railway Company, by which they still hope to ensure a great public improvement.

WEST HILL.

Along the same line of road the Board have determined to make another improvement, and remove a source of considerable danger by lowering a sudden rise in this hill;

Other minor road improvements have been effected during the year, and a very considerable addition to the comfort of the inhabitants in the extensive work of kerbing and channelling footpaths and laying down asphalt and tar pavements, full details of which are contained in the annexed report of the Highways Surveyor.

While zealous in effecting improvements in this District, and in obtaining a fair contribution from the Metropolitan Board towards the cost of carrying them out, this Board have yet felt it their duty jealously to watch the gigantic schemes for Metropolitan improvement which have been promoted by the Metropolitan Board, and in particular to oppose to the utmost the Metropolitan Street Improvement Bill, introduced in the Session of 1872, by which an estimated outlay of £2,000,000 was to be incurred. The Board acted in concert with the Vestries of St. Pancras, Camberwell, and Islington, and the District Board of Fulham, in opposing the Bill, which was also opposed by other Vestries and District Boards, but without success.

SANITARY.

A measure of the highest importance, in a sanitary point of view, has received the sanction of the Legislature during the present year, in the Act for preventing the adulteration of food, drink, and drugs. This Act makes it incumbent upon all Metropolitan Vestries and District Boards to appoint public analysts to analyse all articles of food, drink, and drugs, on the request of any parishioners, for a fee not exceeding ten shillings; and imposes the duty on the Vestries and Boards through their Inspectors of Nuisances, of procuring and submitting for analysis samples of articles of food, or drink, and drugs suspected to be adulterated, and on the articles being certified as adulterated, of proceeding before a magistrate against the party selling or adulterating.

The Board, in January, 1873, appointed Charles Heisch, Esq., F.C.S., Professor of Chemistry in the Medical College of the Middlesex Hospital, as the analyst for the District, and although his services have not yet been greatly called into requisition, the Board can already testify to the beneficial operation of the Act, and anticipate great advantage from it hereafter.

The mortality for the year 1872 has been favourable, the number of deaths being 27 less than in the previous year, notwithstanding the continuing increase of population. And the death rate, stated by the Medical Officer to be 14·84 per 1000 of inhabitants is not only lower than the average annual death rate, from 1861 to 1870, in any of the Registrar General's districts and sub-districts within the Metropolis and City Police District, but is also lower than the average rate in Lewisham for the same period.

The following is a summary of the Table (IX.) in the Medical Officer's Report showing the classes of disease causing the deaths which occurred in the year, and the ages at which they took place :—

CLASSES OF DISEASE.	AGES AT DEATH.								TOTAL.
	Under 1 year.	Under 5.	Under 10.	Under 20.	20 and under 40.	40 and under 60.	60 and under 80.	80 and upwards.	
1. Zymotic	65	60	19	10	9	6	5	1	175
2. Constitutional	14	12	5	9	53	34	20	3	150
3. Local	69	24	9	7	28	65	89	9	300
4. Developmental	55	26	1	—	5	2	25	19	133
5. Deaths by violence.....	14	2	2	1	5	3	1	2	30
Total	217	124	36	27	100	110	140	34	788

Whilst this table shows that nearly one fourth of the total number of deaths arise from zymotic or preventable diseases, it appears that out of the total number 144 occurred in children under 10 years of age.

The large proportion of the total mortality occurring in children under one year appears to afford startling evidence of the necessity for the recent Act for the preservation of infant life.

The Board's hospital, in Hither Green Lane, the Medical Officer reports as continuing to be of essential service in preventing the spread of epidemic disease; 18 cases were admitted during the year, and only one died. The annual cost of the hospital is about £250. During the present year a new ward has been erected, and some general repairs carried out.

The attention of the Board was called in June to the condition of the burial ground of Christ Church, Forest Hill, as being prejudicial to the health of the surrounding inhabitants, and the Medical Officer having confirmed such opinion, the Secretary of State has, upon the application of this Board, caused an official inquiry to be made into the subject, and it is hoped that an order of Privy Council will be issued either wholly preventing further

burials in the ground, or imposing such restrictions as will prevent any ill consequences.

The Board have also, in conjunction with inhabitants of Croydon, successfully opposed the formation, as a commercial speculation, of a Cemetery near South Penge.

LIGHTING.

A material addition has been made during the year to the number of public lamps in the district, and, notwithstanding the comparative isolation of Southend, arrangements have been effected for lighting it with gas. The yearly increase of lamps has been accomplished as regards Lewisham, not only without rendering it necessary to increase the lighting rate, but for the year 1872 the rate has been reduced to threepence in the pound; it is more than probable, however, that the rate will return to fourpence another year. In Penge, the lighting rate is threepence in the pound.

SEWERAGE.

In the course of the present year, the sewer which was several years since constructed from the Ravensbourne and Sydenham main sewer at Bell Green, as far as the Dolphin P. H., Lower Sydenham, has been extended from that point along the Lower Sydenham road, crossing under the London, Brighton, and South Coast Railway, near the Sydenham station, to the top of West Hill, being a total length of 6057 feet; of which 4500 is of brick 3 feet by 2 feet, and 1551 of stoneware pipe 18 inches in diameter.

The cost of the sewer was £3287; other minor sewerage works have also been constructed and are in contemplation, of which particulars are given in the report of the Sewers Surveyor.

Appended to this report are the usual annual statements of account, the annual report of the Medical Officer of Health, and a report by each of the Surveyors of the works executed under their supervision respectively.

By order,

SAM^L. EDWARDS,

Clerk to the Board.

*" To the Justices of the Peace for the County of Kent constituting the
 " Annual General Session of the Peace, to be holden in and for the
 " County on the 24th October, 1871."*

THE MEMORIAL OF THE BOARD OF
 WORKS FOR THE LEWISHAM DISTRICT.

" SHEWETH,—That early in the present year your Memorialists
 " applied to the General Session of the Peace to contribute towards
 " the expense of widening and improving Lewisham Bridge, in
 " accordance with plans and drawings which had been submitted to
 " and approved by the County Surveyor, the estimated cost of the
 " proposed works being £800.

" At the Annual General Session of the Peace holden on the
 " 22nd June last, It was Ordered, on the Presentment of a Grand
 " Jury of the insufficiency and inconveniency of the Bridge, that
 " your Memorialists should be authorised to widen and improve the
 " same in the manner proposed, and at the cost estimated, and that
 " the Court should contribute £200 towards the expense of the
 " same.

" That application was, about the same time, made by your
 " Memorialists to the Metropolitan Board of Works to contribute
 " one-half the estimated cost of the proposed works out of the funds
 " at their disposal for the purpose of Metropolitan Improvements,
 " and, in reply, your Memorialists were informed that the Metro-
 " politan Board had carefully considered the application, and having
 " in the course of their enquiries visited the Bridge, were greatly
 " impressed with the necessity for the improvement proposed, but it
 " appearing that the Bridge was a Country Bridge, they were
 " advised they had no power to contribute towards the cost of
 " widening and improving the same, and that thus they had no
 " alternative in the matter; and convinced as they were of the value
 " of the proposed improvement, it was with regret they arrived at
 " the conclusion that they were unable to comply with the request
 " of your Memorialists.

" Your Memorialists are also advised that the inability of the
 " Metropolitan Board of Works to contribute towards the cost of
 " improving County Bridges applies equally to District Boards of
 " Works, and that the Statute under which they are constituted
 " clearly withholds County Bridges from their jurisdiction. Your
 " Memorialists are therefore under the necessity of abandoning their

“ intention of widening and improving the Bridge in the manner
 “ proposed.

“ The General Session of the Peace being thus the only authority empowered to alter and improve the Lewisham Bridge, your
 “ Memorialists submit that they should assume the exclusive responsibility of improving or rebuilding the same.

“ As evidence of the inadequacy of the Bridge to the very
 “ large and increasing traffic on the road, your Memorialists beg to
 “ call attention to the following facts :—

“ 1. The Bridge is only twenty-two feet six inches in width
 “ between the parapet walls, including the footpath
 “ which it had on one side only; and it has a steep
 “ ascent over it, the inclination being one in twenty.

“ 2. Such was the danger and inconvenience thus occasioned
 “ to the public that your Memorialists, some years since,
 “ caused the entire width of the Bridge to be made a
 “ carriage-way, and had a temporary wooden footway
 “ across the river constructed on one side of it for the
 “ safety and convenience of foot passengers.

“ 3. The traffic having on two recent occasions been taken
 “ by officers employed for the purpose, was ascertained
 “ to be about 1,460 vehicles, and 6,400 foot passengers
 “ within the twelve hours of each day; nearly 200
 “ vehicles and about 700 foot passengers occasionally
 “ passing over the bridge in a single hour.

“ 4. The danger necessarily consequent upon so narrow and
 “ steep a bridge and such heavy traffic is rendered still
 “ greater by a railway bridge passing over the road
 “ close to it.

“ With reference to the claim of the inhabitants of Lewisham
 “ and the adjoining Parishes upon the County Rate for the required
 “ expenditure, your Memorialists beg to remind the Court of General
 “ Session :

“ 1. That the Bridge is one of the two old main—New Cross
 “ Turnpike—roads connecting the County with the
 “ the Metropolis, and that by the turnpike abolition
 “ such roads, of which six miles are in the Parish of
 “ Lewisham, are maintained at the sole cost of the
 “ Parishes through which they pass, in relief of the
 “ inhabitants of the County using the same.

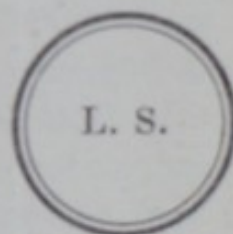
“ 2. That the assessment of the Metropolitan Parishes in
 “ the County of Kent greatly exceeds one fourth of the
 “ assessment of the entire County, and that thus the
 “ Metropolitan Parishes—of which Lewisham is the
 “ largest and most wealthy—have for many years con-
 “ tributed, and will continue to contribute a very large
 “ proportion of the annual cost of repairing and improv-
 “ ing County Bridges, of which no portion (except in
 “ ordinary repairs) has been expended in the Parish of
 “ Lewisham within the memory of man.

“ Your Memorialists therefore request the Court of
 “ General Session of the Peace to exercise with
 “ respect to the Lewisham Bridge, the powers
 “ specially vested in them for improving and
 “ rebuilding County Bridges, the inadequacy
 “ and inconveniency of which shall have been
 “ established by the presentment of a Grand
 “ Jury of the County.

“ And that the Court will order the widening
 “ and improving or the rebuilding of the Bridge,
 “ and defray the cost of the same out of the
 “ County Rate.

“ The Common Seal of the Board was hereunto
 “ affixed by Order made on the 18th of
 “ October, 1871, in the presence of

“ SAML. EDWARDS,
 “ Clerk to the Board.”



“ *To the Justices of the Peace for the County of Kent constituting the*
 “ *Annual General Session of the Peace, to be holden in and for the*
 “ *County on the 24th October, 1871.*”

THE MEMORIAL OF THE BOARD OF
 WORKS FOR THE PLUMSTEAD DISTRICT,

“ SHEWETH,—That your Memorialists are desirous to support the
 “ prayer of the Memorial of the Lewisham Board of Works with
 “ reference to the improvement or re-building of Lewisham Bridge.

“ The inability of the Metropolitan Board of Works, or of any

“ District Board to contribute towards the cost of improving County
 “ Bridges, is clearly stated in the Memorial of the Lewisham Board.

“ The statistics given in the Lewisham Memorial also show how
 “ utterly inadequate the present bridge is for the due accommoda-
 “ tion of the great and yearly increasing traffic over it, and that
 “ from the narrowness of the bridge itself and from the steepness of
 “ the ascent thereto, the public are daily exposed to much incon-
 “ venience and danger.

“ Although the bridge in question is within the limits of the
 “ Parish of Lewisham, yet it so closely adjoins the Plumstead Dis-
 “ trict that the inhabitants of the Parishes composing that District
 “ are almost equally concerned with those of Lewisham in having
 “ it put into safe and convenient condition. In addition to this
 “ they have a deep interest in the matter from the fact that the
 “ expense of maintaining nearly nine miles of main roads in the
 “ Plumstead District, formerly under the control of the New Cross
 “ Turnpike Trust, is, and must be henceforward, borne solely by
 “ the parishes through which they pass.

“ In conclusion your Memorialists would most strongly urge
 “ attention to the fact stated in the Lewisham Memorial, that the
 “ Assessment of the Metropolitan Parishes in the County of Kent is
 “ much more than one-fourth of the Assessment of the entire
 “ County, and that therefore the district contributes largely towards
 “ the annual cost of repairing and improving the County Bridges,
 “ and yet for very many years has not derived any benefit from its
 “ contributions beyond the small sums required for ordinary repairs.

“ Your Memorialists therefore submit that a case exists justly
 “ calling for an application of a portion of the County
 “ Rate, sufficient to defray the cost of improving or re-
 “ building Lewisham Bridge; and they trust that the
 “ Court of General Session of the Peace of the County of
 “ Kent will be pleased to issue an order for the carrying
 “ out of the necessary works in accordance therewith.

“ By order of the Board of Works for the Plumstead District.

“ JAS. MURRAY DALE,
Clerk.”

“ 20th October, 1871.

THE BOARD OF WORKS FOR THE LEWISHAM DISTRICT.

STATEMENT of the RECEIPTS and PAYMENTS of the Board during the Year ended 25th March, 1873.

Receipts.

	£	s.	d.	£	s.	d.
1872.						
March 25.						
Cash Balance in hands of Treasurer	1776	15	5			
Ditto Bookkeeper, Wages, &c.	31	3	0			
				1807	18	5
Cash on Deposit at London and Westminster Bank as Sinking Fund for Mortgage to Kent Life Office	1321	14	4			
Interest thereon during year	41	19	4			
Ditto Messrs. Stanger, Elkington and Griffin, Trustees of the Penge Gravel Allotment Sinking Fund	132	6	9			
Instalment and Interest during year	188	17	7			
				1684	18	0
LEWISHAM.						
General Purposes	8812	9	6			
Ditto 159th Section Metropolis Management Act, 1855 ...	8704	5	9			
Lighting	4485	7	6			
Sewerage Purposes	4299	5	0			
Sewers Construction	2	14	5			
Metropolitan Consolidated Rate	2894	8	9			
Paving (Loan)	7500	0	0			
				36698	10	11
PENGE.						
General Purposes	4287	18	8			
Lighting	1121	0	0			
Sewerage Purposes	1366	19	6			
Metropolitan Consolidated Rate	1389	1	8			
Paving (Loan)	2000	0	0			
				10164	19	10
				£50,356	7	2

Expenditure.

	£	s.	d.	£	s.	d.
LEWISHAM.						
General Purposes	10890	15	9			
Ditto 159th Section Metropolis Management Act, 1855 ...	5175	17	6			
Paving (Loan)	2546	17	7			
Lighting	3987	14	9			
Sewerage Purposes	3116	10	7			
Sewers Construction (Loan)... Former Greenwich Separate Sewerage District	3442	4	0			
Former Ravensbourne ditto... Metropolitan Consolidated Rate	160	2	8			
	175	8	7			
	2894	8	9			
				32243	1	9
PENGE.						
General Purposes	5252	14	11			
Lighting	1146	3	10			
Sewerage Purposes	1596	10	8			
Paving	1186	19	9			
Metropolitan Consolidated Rate	1389	1	8			
				10571	10	10
1873.						
March 25.						
Cash Balance in hands of Treasurer	5835	14	4			
Ditto Bookkeeper, Wages, &c.	21	2	3			
				5856	16	7
Cash on Deposit at London and Westminster Bank as Sinking Fund for Mortgage to Kent Life Office	1363	13	8			
Ditto Messrs. Stanger, Elkington and Griffin, Trustees of Penge Gravel Allotment Sinking Fund	321	4	4			
				1684	18	0
				£50,356	7	2

We, the undersigned, being the Auditors elected by the Board, have caused to be prepared and do allow the above Account in Abstract of the Receipts and Payments of the Board for the year ending 25th March, 1873, to which is appended a detailed Account thereof.

15th May, 1873.

ALF. THOS. LAYTON,
PRIOR PURVIS,
W. E. FRY.

1874

1875

1876

1877

1878

1879

1880

1881

1882

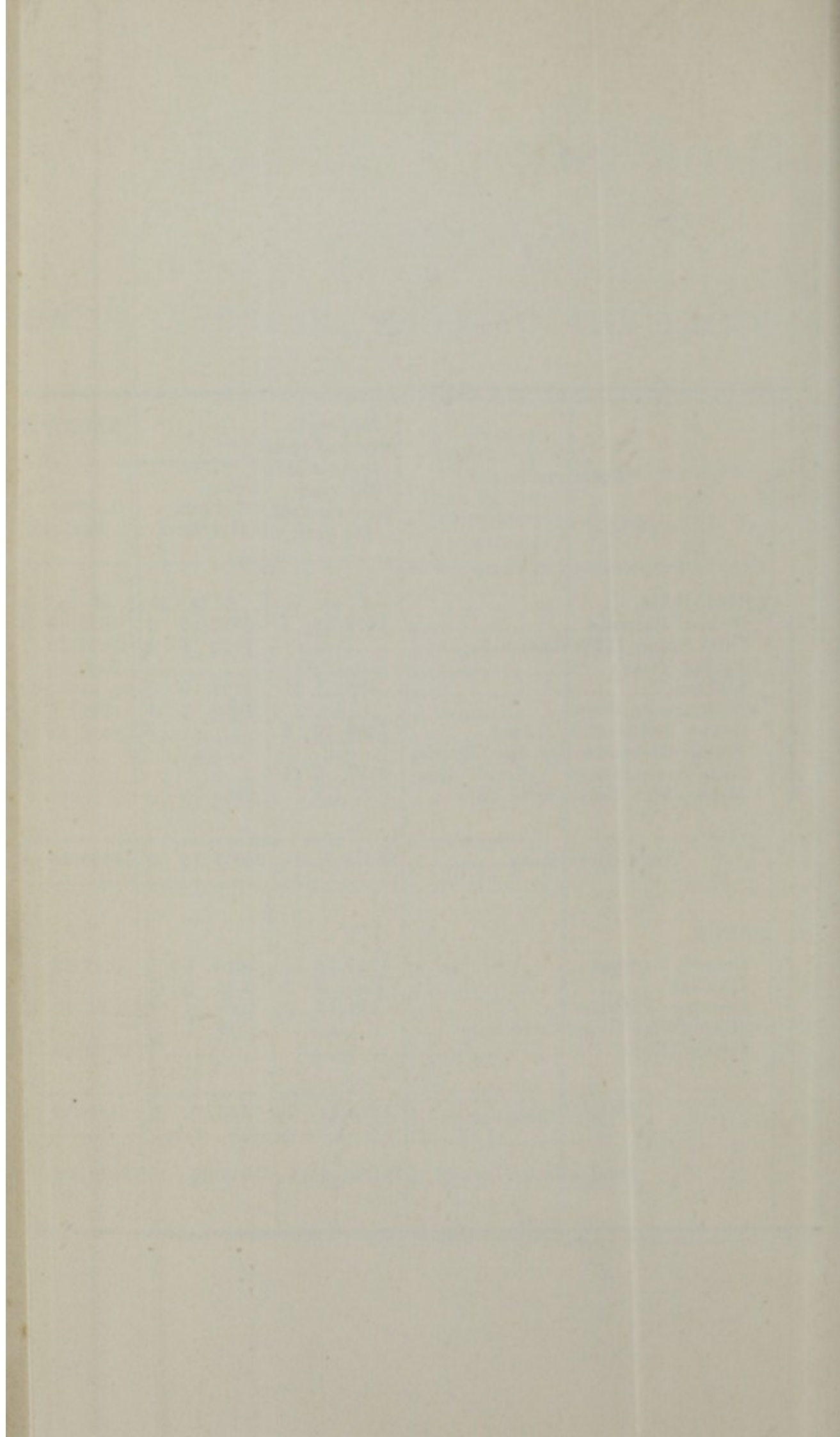
1883

THE BOARD OF WORKS FOR THE LEWISHAM DISTRICT.

ACCOUNT IN DETAIL, SHOWING THE RECEIPTS AND EXPENDITURE OF THE BOARD FOR THE YEAR ENDED THE 25th MARCH, 1873.

Accounts.	Balance in favour of each account at the commencement of the year.	RECEIPTS.				Balance against each account at the commencement of the year.	Totals.	EXPENDITURE.																			Balance in favour of each account at the end of the year.	Total.
		From Overruns.	Other Receipts.	Total Receipts.	Highways.			Ferrying.	Watering.	Road Improvements.	Construction of Sewers.	Sewer Repairs and Cleansing.	New Streets.	Sewers and Drains (Private).	School Board and Electricities.	Municipal Board.	Lighting.	Establishment Expenses.	Sanitary.	Loans repaid and Sinking Fund.	Interest on Loans.	Law Expenses.	Duties.	Total Expenditure.				
LEWISHAM.	£ s. d.	£ s. d.	£ s. d.	£ s. d.	£ s. d.	£ s. d.	£ s. d.	£ s. d.	£ s. d.	£ s. d.	£ s. d.	£ s. d.	£ s. d.	£ s. d.	£ s. d.	£ s. d.	£ s. d.	£ s. d.	£ s. d.	£ s. d.	£ s. d.	£ s. d.	£ s. d.	£ s. d.	£ s. d.	£ s. d.	£ s. d.	£ s. d.
General Purposes	1805 14 1	8075 0 0	1838 4 4	8013 0 0	365 12 2	2409 13 9	8412 16 1																					
Drain (under 18thd Section)		7629 6 8	1074 13 1	8704 0 0		8704 0 0	2002 9 3	1071 12 11																				
Ferrying (Loans)			7500 0 0	7500 0 0		7500 0 0	2002 9 3																					
Lighting	425 1 11	4428 0 0		4428 0 0		4428 0 0																						
Sewerage	2450 6 6	4400 0 0		4400 0 0		4400 0 0																						
Sewerage Construction (Loans)			2 14 4	2 14 4		2 14 4																						
Forward Unrepaid Rep. Sew. District																												
Ditto Ratesborne	2792 0 11					2792 0 11																						
Municipal Consolidated Rate		2094 0 0		2094 0 0		2094 0 0																						
Total—Lewisham.	45325 7 11	20917 15 5	30000 18 4	20917 15 5	1912 13 4	40000 12 8	8004 0 0	7604 0 0	3045 17 7	2010 14 1	270 10 0	2402 0 0	293 7 1	2098 12 11	241 13 4	1165 13 2	2200 0 0	2007 14 9	1004 0 11	321 12 9	1425 0 0	938 2 8	307 3 0	902 3 6	32265 1 0	6042 2 3	40000 12 2	
PENGE.																												
General Purposes	1765 14 11	2265 0 0	1842 19 8	4202 19 8		4202 19 8	1813 0 3		801 0 8	6 2 10				925 14 10		620 0 6		1745 2 10	250 0 2	408 0 11	150 0 0	99 13 8		194 0 0	4502 14 11	200 15 8	6002 13 7	1
Lighting	389 2 2	1123 0 0		1123 0 0		1123 0 0								120 10 11		92 2 9			201 0 3	19 8 3	268 0 0	200 0 0			1206 10 0		1206 10 0	2
Sewerage	114 12 2	1200 0 0	39 19 6	1239 19 8	114 14 0	1239 19 8										1200 1 0									1200 1 0		1200 1 0	4
Municipal Consolidated Rate		1200 0 0		1200 0 0		1200 0 0																						
Ferrying (Loans)			2000 0 0	2000 0 0		2000 0 0																						
Total—Penge.	£ 1839 14 3	7523 1 8	2141 18 2	2141 18 2	114 14 0	12000 0 1	876 13 9	1813 0 3	1100 19 0	601 0 8	6 2 10			170 10 11	925 14 10	62 2 9	620 0 6	1745 2 10	250 0 2	408 0 11	150 0 0	99 13 8		194 0 0	5021 10 10	1142 1 6	12000 0 1	
Total—Bates District	£ 39169 0 2	31040 17 1	18422 15 0	49462 16 9	1927 7 4	40000 0 3	8381 2 9	1012 0 3	2713 17 4	2083 3 9	277 0 10	2402 0 0	401 15 0	2098 12 11	241 13 4	1704 11 9	4013 1 8	2012 18 7	2006 1 0	729 1 11	2161 0 0	1436 0 10	307 2 0	1166 0 6	42914 12 7	7796 2 11	40000 0 2	

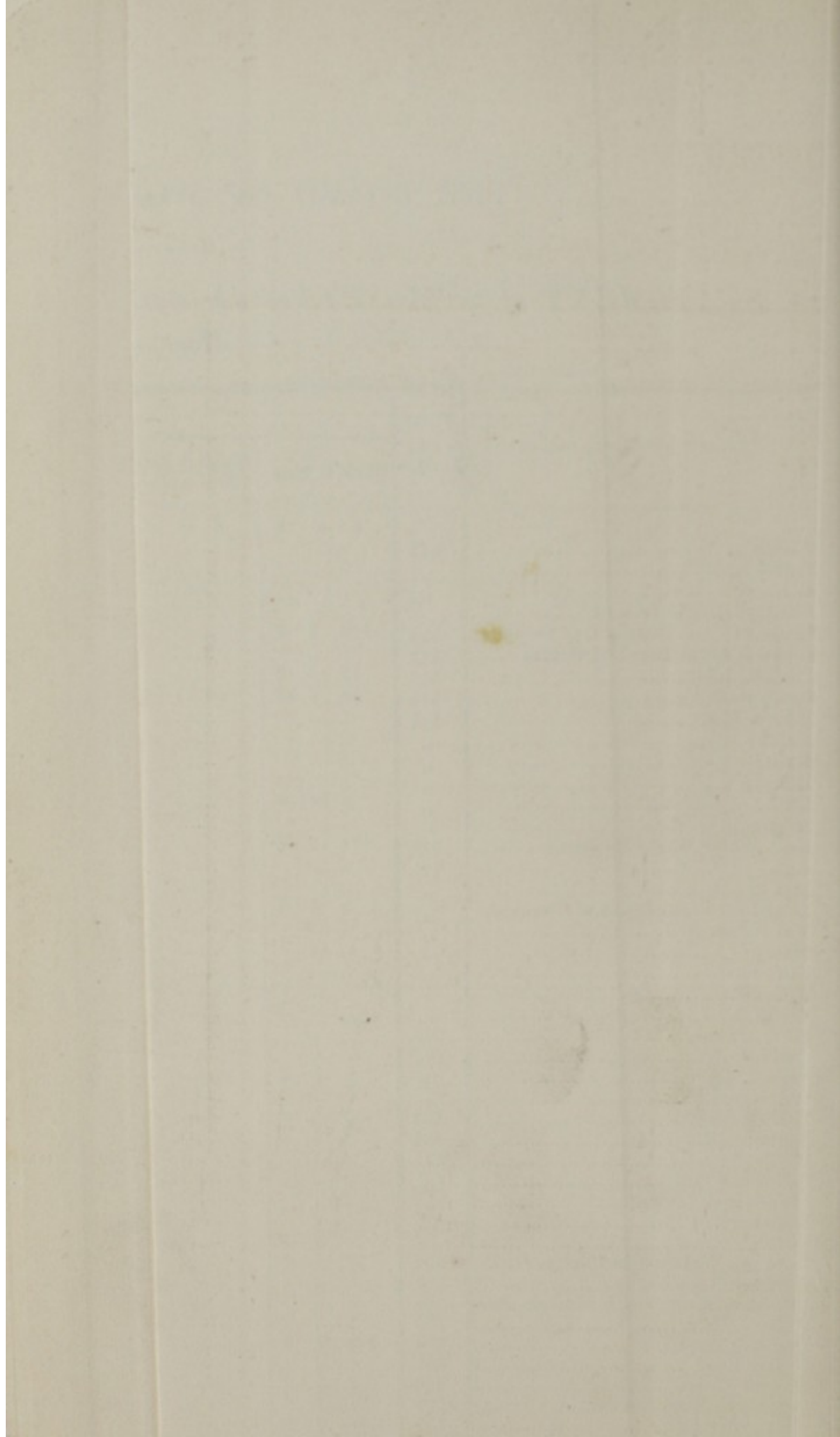
Examined and found correct.
ALFRED THOS. LAYTON,
Treasurer, 10th Nov. 1873.
W. G. FRY.



THE BOARD OF WORKS FOR THE LEWISHAM DISTRICT.

STATEMENT of the ASSETS of the Board on the 25th day of March, 1873 (exclusive of Sinking Fund for Mortgages, for which see Statement).

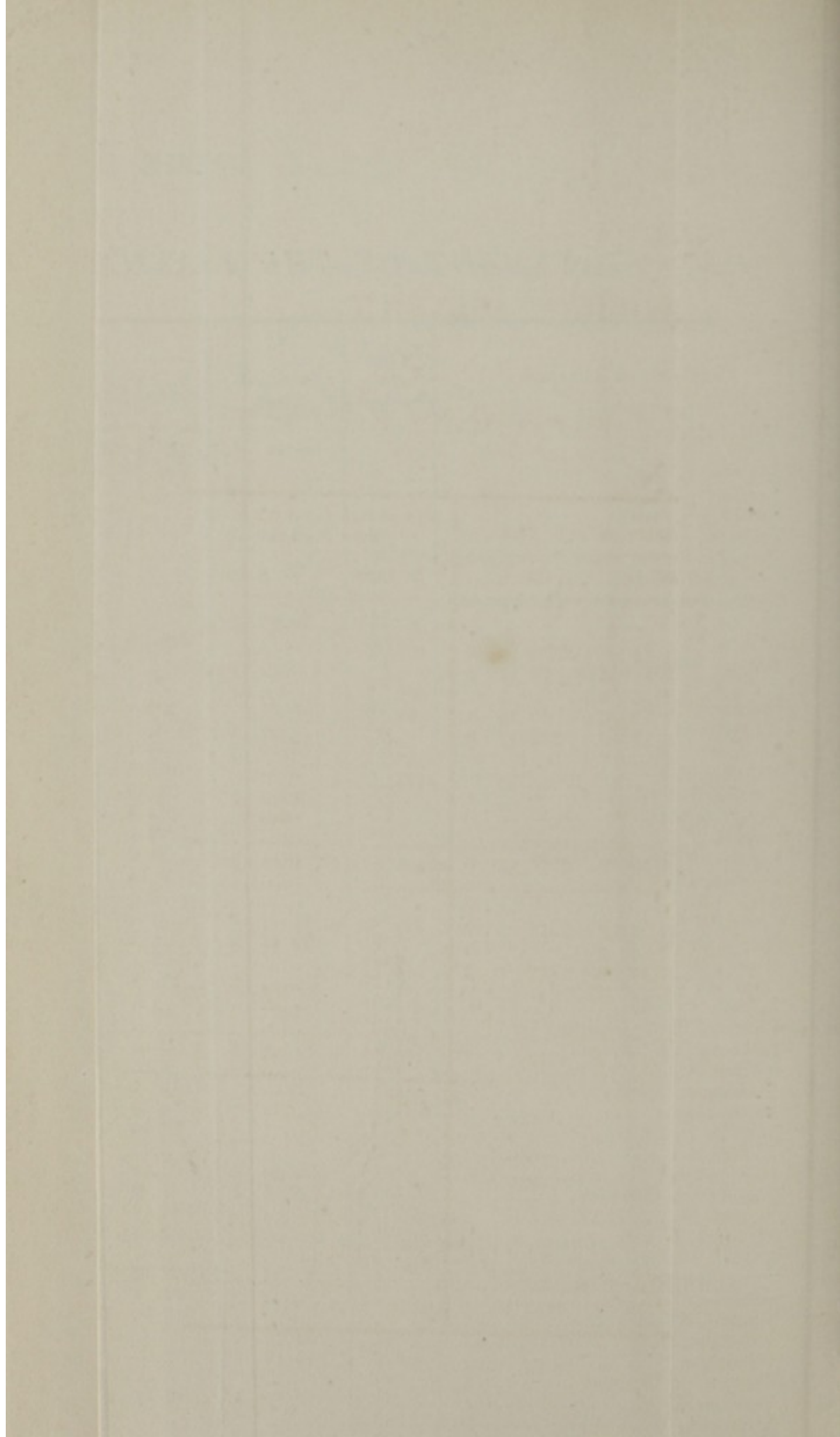
From whom receivable.	Folio in Ledger	LEWISHAM.					PENGE.			TOTAL.
		General Rate.	General Rate, 159th section.	Sewers Rate.	Lighting.	Consolidated Rate.	General Rate.	Sewers Rate.	Consolidated Rate.	
		£ s. d.	£ s. d.	£ s. d.	£ s. d.	£ s. d.	£ s. d.	£ s. d.	£ s. d.	£ s. d.
Alchin.....	411			11 19 0						11 19 0
Bailey.....	"				1 2 6					1 2 6
Bidmead.....	"			13 18 2						13 18 2
Chesterfield and Ireland.....	"						6 6 0			6 6 0
Crystal Palace District Gas Company.....	315	109 3 7					14 16 8			124 0 3
Croydon Local Board of Health.....	312							48 3 9		48 3 9
Carline, John.....	313	17 10 0								17 10 0
Camberwell Vestry.....	314	56 5 10	46 11 6		56 5 0					159 2 4
Edney, Mrs.	411			11 8 0						11 8 0
Farmer.....	"			10 16 0						10 16 0
Heritage.....	"			17 17 0						17 17 0
Holman.....	"				1 10 10					1 10 10
Hall.....	"	0 10 0								0 10 0
Horsford, W.	"			12 6 6						12 6 6
Kent Water Works Company.....	356	44 19 0								44 19 0
Jopp.....	411				1 17 0					1 17 0
Lintott.....	"			9 16 0						9 16 0
Lewisham Local Board of Guardians.....	"	3 6 8		3 6 8			1 13 4	1 13 4		10 0 0
McLennan, G. J.	"			8 6 6						8 6 6
Manger.....	"			6 19 2						6 19 2
Nicholls.....	"			1 0 0						1 0 0
Nicholls.....	"			1 19 9						1 19 9
Perrin.....	"			26 9 9						26 9 9
Perry, John.....	348			1 6 0						1 6 0
Phillips.....	411			6 3 1						6 3 1
Preedy, John.....	"	0 18 4								0 18 4
Riddington.....	"			10 5 7						10 5 7
Road Scrapings.....	390	34 14 0								34 14 0
Sanitary (Hospital).....	424	5 17 4		5 17 4			2 18 8	2 18 8		17 12 0
Sinkins.....	411			10 8 0						10 8 0
Smith and Poll.....	"			20 9 4						20 9 4
Wallen and James.....	"			18 14 0						18 14 0
Watkins.....	"			19 0 3						19 0 3
Welsh.....	"			9 11 0						9 11 0
Lambeth Waterworks Company.....	361	19 13 0					4 6 3			23 19 3
Beverley Road Sewer.....	301							32 13 3		32 13 3
Belvedere Road (South Western Portion).....	303						68 0 0			68 0 0
Bradford Road.....	304	249 7 0								249 7 0
Arpley Road.....	308						29 7 1			29 7 1
Anerley Grove.....	309						83 14 0			83 14 0
Court Hill Road Sewer.....	311			21 2 10						21 2 10
Canterbury Road.....	317	39 3 0								39 3 0
Court Hill Road.....	323	321 14 0								321 14 0
Devonshire Road Sewer.....	325			23 17 9						23 17 9
David's Road.....	329	282 18 6								282 18 6
Eastdown Park Road.....	331	11 18 8								11 18 8
Clarina Road.....	337						187 0 0			187 0 0
Clyde Terrace.....	339	62 15 0								62 15 0
Havelock Mews.....	345	453 7 0								453 7 0
Intermediate Road.....	351						48 0 0			48 0 0
Horton Street.....	353	338 10 0								338 10 0
Jerrard Street.....	357	179 5 0								179 5 0
Howard Road.....	367						233 7 0			233 7 0
Anerley-park Road.....	369						882 5 0			882 5 0
Park Road.....	381	40 13 4								40 13 4
Prospect Road.....	385	290 6 3								290 6 3
Royal Parade Mews.....	393	14 7 0								14 7 0
Ravensbourne Villas Road.....	394	131 10 0								131 10 0
Ryecroft Road.....	396	42 10 0								42 10 0
Raglan Street.....	398	122 0 0								122 0 0
St. Germain's Road.....	419	97 11 11								97 11 11
Selby Road Sewer.....	420							46 5 7		46 5 7
Selby Road.....	421						7 2 0			7 2 0
Street leading out of Raglan Street.....	423	10 12 0								10 12 0
Thicket Road.....	431						7 4 2			7 4 2
Thurston Road.....	434	399 1 9								399 1 9
Weighton Road Sewer.....	443							5 11 10		5 11 10
		£ 3380 8 2	46 11 6	282 17 8	60 15 4	1676 0 2	137 6 5	5483 19 3



THE BOARD OF WORKS FOR THE LEWISHAM DISTRICT.

STATEMENT OF THE LIABILITIES of the Board, 25th March, 1873 (exclusive of Mortgages, for which see Statement).

TO WHOM PAYABLE.	Folio in Ledger.	Establishment.	LEWISHAM.						PENGE.				TOTALS.
			General Rate.	General Rate (under 139 sect.)	Sewer Rate.	Paving (Loan)	Sewers Construction (Loan)	Lighting Rate.	General Rate.	Sewers Rate.	Lighting Rate.	Paving (Loan)	
			£ s. d.	£ s. d.	£ s. d.	£ s. d.	£ s. d.	£ s. d.	£ s. d.	£ s. d.	£ s. d.	£ s. d.	
Beevers, E. & H.	8		224 0 0						335 5 6			267 8 3	£ s. d.
Builder, The	10	2 7 6											826 13 9
Bloomfield, James	12						23 0 6						2 7 6
Burchell, John	17	1 10 8	20 12 11		244 0 7					7 17 7			23 0 6
Barnett's Patent Asphalt Company	20					115 18 4							274 1 9
Crockford, W. H., Jun.	23	7 3 0											115 18 4
Crystal Palace District Gas Company	25							522 18 5			292 4 2		7 3 0
Carlisle, John	31	75 0 0											815 2 7
Cole, G. W.	35		554 19 7						550 0 0				75 0 0
Dulake, Esther	47								100 2 0				1104 19 7
Daly, J. C.	52		2 18 7										100 2 0
Dommett, C. W.	53								20 0 0				2 18 7
Edwards, S.	59	75 0 0											20 0 0
Ditto	59	25 0 0											75 0 0
Fuller, Thomas	70		16 13 4						14 15 0				25 0 0
Forster, Samuel	71		56 15 9			6 4 0							31 8 4
Fox, Thomas	72		25 2 6										62 19 9
Gasson, J.	80			1 5 6									26 2 6
Greenwich Board of Works	81		178 0 0										1 5 6
Goodman, B. J.	82		3 15 0										178 0 0
Grant, M.	87			23 8 0									3 15 0
Game, C. V.	88	11 5 0											23 8 0
Harris, John	93	22 10 0											11 5 0
Harris, W.	100				20 1 2								22 10 0
Ingersoll, F. R.	107		12 8 7										20 1 2
Jewkes, Thomas	108			14 6 0									12 8 7
Lambeth Water Company	119								25 5 0				14 6 0
Leathersellers' Company	122	15 0 0											26 5 0
Martin, Mrs. A. M.	134								31 4 0				15 0 0
Mowlem & Company	135		1361 1 6			2042 13 9							31 4 0
Major & Sons	137		4 10 0	9 9 0									3403 15 3
May, A.	138		22 10 0										13 19 0
Maller, B.	142			28 0 0									22 10 0
Metropolitan, The	144	3 18 0											28 0 0
Phoenix Gas Company	153	5 4 1	2 8 2					507 14 3					3 18 0
Puplett, W.	157		106 17 5										515 6 6
Robinson, J. & H.	171		12 8 0										106 17 5
Rogers, George	172								22 1 1				12 8 0
Rutty, George	174		55 12 8						920 0 0				22 1 1
Stimpson, W.	185		64 4 1	6 3 9									975 12 8
Shackell, Thomas	191		27 14 4										70 7 10
Trevelton, W. H.	241	68 15 0											27 14 4
Wilkinson, F. E.	247	15 15 0											68 15 0
Thynne and Thynne	240			120 0 0									15 15 0
Whiffen, E.	251	0 4 6	3 17 6	8 6 0									120 0 0
Wilkinson, W. B. & Co.	257				233 7 7								12 8 0
Morgan, A.	145								22 0 0				233 7 7
Stevens, E.	193	0 2 6	8 5 0										22 0 0
Shelbourne, E. & J.	189		67 13 0										8 7 6
Sabin, George	190		23 7 6	2 17 0									67 13 0
HAVELOCK MEWS—Estimated Expenses of Paving, &c.			453 7 0										26 4 6
													453 7 0
		328 15 3	3310 2 5	213 15 3	264 1 9	2398 3 8	23 0 6	1030 12 8	2041 12 7	7 17 7	292 4 2	267 8 3	10177 14 1
Amount of Establishment Expenses...			109 11 9		109 11 9				54 15 11	54 15 11			
			3419 14 2		373 13 6				2096 8 6	62 13 5			



THE BOARD OF WORKS FOR THE LEWISHAM DISTRICT.

Statement shewing the Items of Expenditure comprised under the head of "Establishment Expenses," and how they are apportioned among the several heads of Expenditure.

ITEMS OF EXPENDITURE INCLUDED IN ESTABLISHMENT EXPENSES.			APPORTIONMENT OF ESTABLISHMENT EXPENSES.		
	£	s. d.		£	s. d.
Sundries	354	2 1	LEWISHAM—		
Rent, rates, &c.	44	0 0	General Purposes	792	0 6
Salaries	1437	2 2	Sewerage ditto	792	0 5
Stationery and printing	179	6 3			
Sanitary expenses	279	10 11			1584 0 11
Law Expenses (Streets Improvement Bill)	52	0 0	PENGE—		
			General Purposes	381	0 3
			Sewerage ditto	381	0 3
					762 0 6
					£2346 1 5
	£2346	1 5			

NOTE.—The Establishment Expenses of the Board are in the first instance apportioned between the Parish of Lewisham and Hamlet of Penge, on the basis of rateable value, and such Expenses are further apportioned between the Expenditure for the year in the Parish and Hamlet respectively under the heads of General Purposes and Sewerage Purposes, in the proportion of one-half to each account respectively.

THE BOARD OF WORKS FOR THE LEWISHAM DISTRICT.

STATEMENT showing the Financial Condition of the Board and of each separate head of Expenditure on 25th March, 1873.

	CASH BALANCES.		LIABILITIES AND ASSETS.		FINANCIAL CONDITION OF THE BOARD.	
	In favour.	Against.	Liabilities.	Assets.	In Debt.	In Credit.
	£ s. d.	£ s. d.	£ s. d.	£ s. d.	£ s. d.	£ s. d.
LEWISHAM.						
General Purposes	385 12 2	3419 14 2	3380 8 2	424 18 2
Ditto (under 159th M. M. Act, 1855)	992 18 5	213 15 3	46 11 6	825 14 8
Paving (Loan)	1889 15 10	2398 3 8	508 7 10
Lighting	935 14 8	1030 12 8	60 15 4	34 2 8
Sewerage Purposes.....	190 19 9	373 13 6	282 17 8	100 3 11
Sewers Construction (Loan).....	10 16 5	23 0 6	12 4 1
Former Greenwich Separate Sewerage District.....	1427 1 2	1427 1 2
Former Ravensbourne ditto	2621 17 4	2621 17 4
Sinking Fund (Kent Life Office Mortgages)	1363 13 8	1363 13 8
	8005 16 1	1812 13 4	7458 19 9	3770 12 8	2406 13 11	4911 9 7
PENGE.						
General Purposes	380 18 8	2096 8 6	1576 0 2	139 9 8
Lighting	324 18 4	292 4 2	32 14 2
Sewerage Purposes	114 14 0	62 13 5	137 6 5	40 1 0
Paving (Loan)	436 4 6	267 8 3	168 16 3
Sinking Fund (Penge Gravel Allotment Fund)	1021 4 4	1021 4 4
	2163 5 10	114 14 0	2718 14 4	1713 6 7	179 10 8	1222 14 9
Cash balances in hands of Treasurer	5835 14 4
„ „ Bookkeeper (Wages, &c., Account)	21 2 3
Cash on Deposit at London and Westminster Bank (Kent Life Office Sinking Fund).....	1363 13 8
Cash on Deposit, Penge Gravel Allotment Fund	321 4 4
Balance of Temporary Loan of Penge Gravel Fund for Highway Purposes, Penge.....	700 0 0
Amount in credit	3547 19 9
	10169 1 11	10169 1 11	10177 14 1	5483 19 3	6134 4 4	6134 4 4

THE BOARD OF WORKS FOR THE LEWISHAM DISTRICT.

STATEMENT of the outstanding MORTGAGES and LOANS of the Board on the 25th March, 1873.

No. of Mortgage Deed.	Date.	Amount.	Rate of Interest per cent.	Mortgagees.	How Repayable.	Amount Repaid.	Amount of Sinking Fund for Repayment.	Amount remaining due 25th March, 1873.	Upon what Rates chargeable.
£ s. d.	£ s. d.	£ s. d.	£ s. d.	£ s. d.	£ s. d.	£ s. d.	£ s. d.	£ s. d.	
No. 1	1856. July 10	6000 0 0	£5	Trustees for the Kent Life Office	No period or notice provided for in the Deed. See below*	3150 0 0	1363 13 8	2850 0 0	The Sewers Rates on the Parish of Lewisham
2	„ December 2	2000 0 0	£5	The same	The same. See below*	1250 0 0	650 0 0	The same
4	1858. October 28	2000 0 0	£5	Trustees for the United Kingdom Provident Institution	By 20 equal annual instalments	1400 0 0	600 0 0	The Sewers Rates on the Hamlet of Penge
7	1861. November 7	2000 0 0	£5	Trustees for the Kent Life Office	*At this date the three mortgages to the Kent Life Office were merged into one for £9000, repayable by equal annual instalments of £400 in respect of the Mortgages Nos. 1 and 2, and of £100 in respect of Mortgage No. 7	2000 0 0	The Sewers Rates on the Parish of Lewisham
8	1862. August 28	1722 12 11	£5	Messrs. Daikers, Stanger, and Wright, as Trustees of the Board of the Penge Gravel Allotment Fund—now transferred into the names of Messrs. Stanger, Elkington, and Griffin	By 20 equal annual instalments—re-invested on deposit with the London and Westminster Bank	1021 4 4	1722 12 11	The Sewers Rates on the Hamlet of Penge
9	1863. November 19	1000 0 0	£5	Trustees for the Kent Life Office	By 20 equal annual instalments	450 0 0	550 0 0	The Sewers Rates on the Parish of Lewisham
10	1864. July 14	4000 0 0	£5	The same	The same	1600 0 0	2400 0 0	The Sewers Rates on the Hamlet of Penge
11	1865. June 15	1000 0 0	£5	The same	By 10 equal annual instalments	700 0 0	300 0 0	The General Rate on the Parish of Lewisham
12	1867. January 24	6000 0 0	£5	Trustees for the Atlas Assurance Company	By 20 equal annual instalments	1800 0 0	4200 0 0	The Sewers Rates on the Parish of Lewisham
13	„ „	4000 0 0	£5	The same	The same	1200 0 0	2800 0 0	The Sewers Rates on the Hamlet of Penge
14	1869. March 18	1500 0 0	£5	Trustees for the United Kingdom Temperance and General Provident Institution	By 10 equal annual instalments	600 0 0	900 0 0	The General Rate on the Hamlet of Penge
15	1870. February 4	3000 0 0	£4 15s.	Provident Clerk's Mutual Life Assurance Association	By 20 equal annual instalments	450 0 0	2550 0 0	The Sewers Rates on the Parish of Lewisham
16	1870. November 12	3000 0 0	£4 15s.	The same	The same	300 0 0	2700 0 0	The General Rates on the Parish of Lewisham
17	1871. October 27	3500 0 0	£4 10s.	Trustees for the United Kingdom Temperance and General Provident Institution.	By 40 equal half-yearly instalments	175 0 0	3325 0 0	The Sewers Rates on the Parish of Lewisham
18	1872. June 20	3000 0 0	£4 15s.	Provident Clerk's Mutual Life Assurance Association	By 20 equal annual instalments	✓.....	3000 0 0	The General Rate on the Parish of Lewisham
19	1872. August 15	2000 0 0	£4 15s.	The same	The same	2000 0 0	The General Rate on the Hamlet of Penge
20	1873. March 13	3000 0 0	£4 15s.	The same	The same	3000 0 0	The General Rate on the Parish of Lewisham
21	„ „	1500 0 0	£4 15s.	The same	By 7 equal annual instalments	1500 0 0	The same
		£50222 12 11				£14975 0 0	£2384 18 0	£35047 12 11	

THE UNIVERSITY OF CHICAGO

PHYSICS DEPARTMENT

RESEARCH REPORT

NO. 1234

BY

DR. J. D. JONES

AND

DR. A. B. SMITH

CHICAGO, ILL.

1955

RECEIVED

APRIL 15, 1955

NAMES AND ADDRESSES

OF THE

Members of the Board of Works and of their Officers,
IN JUNE, 1873.

Members.

- (a) BROOKER, Mr. JAMES, Brockley Park, Forest Hill.
- (c) BROWN, Mr. SAMUEL, High Street, Lewisham.
- (b) BURDETT, Mr. FRANCIS, Royal Parade, Blackheath.
- (a) ELKINGTON, Mr. GEORGE, Anerley Road, Penge.
- (c) GATES, Mr. JOHN B., Longton Grove, Sydenham.
- (c) GIBSON, Mr. WILLIAM, 3, Percy Villas, Maple Road, Penge.
- (b) GREEN, Mr. CHARLES, Croydon Road, Penge.
- (c) GRIFFIN, Mr. WILLIAM HUDSON, Anerley Road, Penge.
- (b) HENNELL, Mr. ALEX. GORDON, Mayow Road, Forest Hill.
- (a) HOLDSWORTH, Mr. JAMES, Ladywell, Lewisham.
- (a) HORTON, Mr. BENJAMIN, jun., Homesdale, Lewisham.
- (a) HUGHES, Mr. HENRY, Lansdowne Lodge, Forest Hill.
- (b) INGERSOLL, Mr. FREDERICK HENRY, Lewisham.
- (c) JERRARD, Mr. SAMUEL JOHN, Homesdale, Lewisham.
- (b) JONES, The Rev. WM. TAYLOR, The College, Sydenham.
- (a) LEMON, Mr. WILLIAM G., Montpelier Lodge, Blackheath.
- (c) MURIEL, Mr. BROOKE, Peak Hill, Sydenham.
- (a) RIDDINGTON, Mr. STEPHEN, Lewisham.
- (b) ROBERTS, Mr. WM. BACHE, 4, Sunderland Villas, Forest Hill.
- (a) SMITH, Mr. THOMAS, Anerley Road, Penge.
- (b) STANGER, Mr. WM. W., Belvedere Road, Upper Norwood.
- (a) TAPLEY, Mr. THOMAS, Sangley Farm, Catford.
- (c) THOMPSON, Mr. CHAS. W., 16, Rutland Park, Perry Hill.
- (b) VOLLER, Mr. WILLIAM, Osborne Place, Blackheath.
- (c) WHITTAKER, Mr. THOMAS M., Spencer Place, Blackheath.
- (c) WHOMES, Mr. ROBERT, Brook House, Lewisham.
- (b) WOOFF, Mr. RICHARD, Lewisham.

NOTE.—The Members having (a) prefixed to their names will go out of office by rotation in June, 1874; those having (b) so prefixed in June, 1875; and those having (c) so prefixed in June, 1876.

Officers.

Treasurer and Banker.

The LONDON AND WESTMINSTER BANK (Southwark Branch).

Clerk.

Mr. SAML. EDWARDS, Lewisham.

Medical Officer.

Dr. FREDERIC EACHUS WILKINSON, Battle Cottage, Sydenham
Park Road.

Sewers' Surveyor.

Mr. W. H. TREVERTON, Grove Place, Lewisham.

Highways' Surveyor.

Mr. JOHN CARLINE, 6, Camps Hill Terrace, Ryecroft Road,
Lewisham.

Assistant Clerk.

Mr. EDWARD WRIGHT, Lewisham.

Bookkeeper.

Mr. O. A. MOSS, Lewisham.

Inspector of Nuisances.

Mr. PETER ROBERTSON, 5, The Retreat, Hither Green Lane,
Lewisham.

Dust Inspector.

Mr. WILLIAM TRADER, George Lane, Lewisham.

Offices.

Grove Place, Lewisham, near the Church.

Committees.

Finance.

Mr. BROOKER.
 „ BURDETT.
 „ GATES.
 „ GIBSON.
 „ GREEN.
 „ GRIFFIN.
 „ HORTON.
 „ HUGHES.
 „ LEMON.
 „ RIDDINGTON.
 „ ROBERTS.
 „ TAPLEY.
 „ THOMPSON.

General Purposes.

Mr. BROOKER.
 „ BURDETT.
 „ GIBSON.
 „ GREEN.
 „ HENNEL.
 „ HORTON.
 „ HUGHES.
 „ JERRARD.
 Rev. W. T. JONES.
 Mr. INGERSOLL.
 „ MURIEL.
 „ RIDDINGTON.
 „ STANGER.
 „ TAPLEY.

Sanitary.

Mr. BROOKER.
 „ GATES.
 „ GREEN.
 „ GIBSON.
 „ HORTON.
 „ INGERSOLL.
 „ LEMON.
 „ MURIEL.
 „ STANGER.
 „ TAPLEY.
 „ WHITTAKER.

Horse.

Mr. BURDETT.
 „ HUGHES.
 „ HOLDSWORTH.
 „ JERRARD.
 „ RIDDINGTON.
 „ ROBERTS.
 „ TAPLEY.

COMMITTEES—CONTINUED.

Local.

<i>Blackheath and Lewisham.</i>	<i>Sydenham and Forest-hill.</i>	<i>Penge.</i>
Mr. BURDETT.	Mr. BROOKER.	Mr. ELKINGTON.
„ BROWN.	„ GATES.	„ GIBSON.
„ HOLDSWORTH.	„ HENNELL.	„ GREEN.
„ HORTON.	„ HUGHES.	„ GRIFFIN.
„ INGERSOLL.	Rev. W. T. JONES.	„ SMITH.
„ JERRARD.	Mr. MURIEL.	„ STANGER.
„ LEMON.	„ ROBERTS.	
„ RIDDINGTON.	„ THOMPSON.	
„ TAPLEY.		
„ VOLLER.		
„ WHITTAKER.		
„ WHOMES.		
„ WOOFF.		

ANNUAL REPORT

TO

The Board of Works for the Lewisham District
FOR THE YEAR 1872,

BY

F. EACHUS WILKINSON, M.D., &c.

Medical Officer of Health for the District.

GENTLEMEN,

As provided by the Metropolis Local Management Act, 1862 (25 and 26 Vict., cap. 102), I have again the honour of laying before you a report of the estimated population, together with the births and deaths registered in the Lewisham District during the year 1872.

In Table I. (see p. 6), I have given the enumerated population at the three decennials, 1851, 1861, and 1871.

The estimated population for the year 1872, obtained by ascertaining from the rate books the number of inhabited houses at as near the middle of the year as possible, and calculating the same number of persons per house as were found to be resident when the census of 1871 was taken.

The number of inhabited houses at the censuses of 1851, 1861, and 1871, with the average number of persons per house at these periods.

The average mortality per 1000, assuming a population obtained as above mentioned.

Table II. gives the mortality in the Metropolitan and City Police Districts from the Registrar General's summary.

Table III., the mortality of the Suburbs of London.

Table IV., the mortality of 20 cities and towns of the united kingdom.

Table V., the causes of and ages at death in the Lewisham District.

Table VI., the number of deaths which have taken place from certain epidemic diseases during the last 14 years.

Table VII., the births and deaths in the each of the Registrar General's divisions of the Lewisham District.

Table VIII., the quality of the Water Supply of this and other Metropolitan Districts, from Dr. Frankland's analysis.

Table IX., the causes of death and ages at death in the District.

Registrar's Sub-districts.	Enumerated Population, (Census) 1851.	Enumerated Population, (Census) 1861.	Enumerated Population, (Census) 1871.	Estimated Population, 1871.	Estimated population, 1872, at so many per house, taking the number per house in 1871.	Number of Inhabited Houses, 1851 (Census).	Number of Inhabited Houses, 1861 (Census).	Number of Inhabited Houses, middle of 1872.	Average number of persons per house (1851).	Average number of persons per house (1861).	Average number of persons per house (1871).	Average mortality per 1000 population, 1872.
BLACKHEATH— (a part of Lewisham Parish in the Sub-district of Lee)	4466	4841	5938	5931	5912	728	807	934	6 18	6 00	6 33	12 68
LEWISHAM— (a part of Lewisham Parish in the Sub-District of Lewisham Village	6097	7372	11508	11500	12405	1088	1326	2099	5 6	5 56	5 91	17 0
SYDENHAM CHAPELRY...	4501	10595	19016	18996	20398	801	1656	3040	5 61	6 40	6 71	16 08
The whole of Lewisham Parish	15064	22808	36462	36427	38715	2617	3789	6073	5 75	6 01	6 38	15 85
HAMLET OF PENGE	1169	5015	13201	13201	14370	153	668	2101	7 64	7 50	6 84	12 10
Entire District ...	16233	27823	49663	49628	53085	2770	4457	8174				14 84

TABLE I.

"In London, including all the parishes partly or wholly within a circle of 15 miles round Charing Cross, the mean density of the population in 1872 was 9 to an acre; and the annual rate of mortality was 20·8 per 1000.

"In the 10 years, 1861-70, the annual rate was 23·6; in 1871 it was 23·7.

"The outer ring includes 11 entire Registrar's districts with parts of 5 districts, or 44 entire sub-districts, where the mean density of population is expressed by 1·8 persons per acre, and the mortality was at the rate of 17·5 in 1872, against 19·3 in the 10 years, 1861-70, and 19·0 in 1871.

"The population of the Lewisham Parish was at the rate of 5 persons per acre.

"The mortality of Registration London, at the rate of 24·3 per 1000 during the 10 years, was one-fourth higher than the mortality in the outer ring; the difference in the annual deaths was 5 deaths in 1000 living. In 1872 the advantages remained in favour of the outside districts, where the population has more air to live in; but the difference in the two rates declined from 5 to 4 per 1000.

"This is shewn in the annexed table.

TABLE II.

Annual rates of mortality per 1000.

	Ten years, 1861-70.	1871.	1872.
In the Metropolitan and City Police Districts	23·6	23·7	20·8
In Registration London	24·3	24·6	21·5
Outside Registration London.....	19·3	19·0	17·5

"The rates of mortality in the several Districts varied from 15 to 29 per 1000 for the 10 years, 1861-70.

TABLE III.

Average annual death-rate (1861-70) of Registrar's districts and sub-districts within the Metropolitan and City Police District, arranged according to the rate of mortality per 1000.

Hampstead	15.3	Hackney	21.0
Lewisham	16.2	Camberwell	21.4
Bromley	16.4	Westminster, St. James's	21.8
Chigwell	16.7	Lambeth	22.1
Carshalton and Epsom	16.7	Mile End, Old Town	23.4
Staines	17.6	Stepney	24.8
Kingston	18.1	Marylebone	25.1
Hendon	18.4	Chelsea	25.2
Edmonton	18.5	Holborn	25.5
Croydon	18.8	Bethnal Green	25.7
Richmond	19.1	Shoreditch	25.8
Wandsworth	19.5	Greenwich	26.4
Brentford	20.1	Poplar	27.0
West Ham	20.4	St. Giles's	27.4
Woolwich	20.7	St. George's-in-the-East	28.6
Kensington	20.8		

"The mortality of 20 cities and towns is in the aggregate above the London standard, and the 3 cities of the highest mortality are the densest.

"Density of population practically (although not necessarily) implies density of zymotic impurity in most towns, and a higher corresponding rate of mortality.

"Precautions are required in proportion to density to obviate its evils."—[*Registrar General.*]

TABLE IV.

Average mortality (1861-70) of 20 great Cities and Towns arranged in the order of their mortality.

Portsmouth	21.9	Sunderland	26.8
Bristol	23.8	Oldham	27.0
Birmingham	24.0	Leicester	27.3
Nottingham	24.9	Sheffield	27.5
Norwich	25.2	Leeds	27.6
Hull	25.4	Newcastle-on-Tyne	27.6
Edinburgh	26.0	Salford	27.9
Dublin	26.0	Manchester	30.9
Bradford	26.4	Glasgow	31.1
Wolverhampton	26.5	Liverpool	31.3

THE LEWISHAM DISTRICT, 1872.

The year 1872 was characterized by an unusually mild temperature and heavy rainfall.

The prevalent fatal zymotic diseases were diarrhœa, which destroyed 36 lives; scarlet fever, which destroyed 39 lives; and hooping cough, to which 35 deaths were attributed.

Typhus, the fever of overcrowding, caused only one death; and enteric fever, caused by pollution of the atmosphere, the soil, or drinking-water, by sewage matter; caused 11 deaths.

The mortality from zymotic disease (more fully shown in Table V.), however, only represents a tithe of the suffering occasioned; as for every one who dies of epidemic disease, many have passed through the disease and more or less recovered. And it thus points out how necessary it is to secure to the people the blessings of pure air, both external to habitations, as well as internal to them; pure drinking water; facilities for personal and domestic cleanliness; as well as hygienic measures of every kind; by which means health and strength may be promoted, and without which suffering, pauperism, and death result.

Table V. gives the number of deaths which have taken place from certain epidemic diseases during the last 14 years.

TABLE V.

Year.	Smallpox.	Measles.	Scarlatina.	Diphtheria.	Hooping Cough.	Cholera.	Diarrhœa.	Fever.	Total.
1859	2	9	32	7	19	—	13	13	95
1860	7	19	8	7	4	—	2	18	65
1861	2	—	5	12	14	—	13	14	60
1862	—	13	21	10	7	—	12	16	79
1863	3	29	19	6	14	—	17	11	99
1864	8	10	36	10	15	1	29	19	128
1865	5	9	13	7	14	—	32	16	96
1866	5	21	12	21	32	10	23	11	135
1867	14	3	9	8	16	—	25	26	101
1868	—	34	77	6	8	—	29	25	179
1869	1	14	40	7	27	—	15	28	132
1870	1	3	70	8	14	—	48	22	166
1871	19	26	25	8	16	—	41	17	152
1872	5	9	39	10	35	1	36	14	149
	72	199	406	127	235	12	335	250	1636

Of constitutional diseases 30 are attributed to cancer and 86 to Phthisis.

Inflammatory diseases of the chest produced 112 deaths, of which number bronchitis caused 73 and pneumonia 35 deaths.

38 deaths took place from diseases of the liver and other digestive organs.

133 from developmental diseases affecting the extremes of life.

13 are attributed to accidents or negligence, and 4 to suicide.

217 deaths took place under 1 year.

124	"	"	at	1	and under	5.
36	"	"	"	5	"	10.
27	"	"	"	10	"	20.
100	"	"	"	20	"	40.
110	"	"	"	40	"	60.
140	"	"	"	60	"	80.
34	"	"	"	80	and above.	

788

The estimated increase of population in the Lewisham District, during the year 1872, was 3422.

1693 births have taken place in the district during the year, and the births exceeded the deaths by 905.

The birth rate was 31·85 per 1000 population.

The death rate was 14·84 per 1000 population.

In Blackheath,

The birth rate was 27·23.

The death rate was 12·68

In Lewisham Village,

The birth rate was 35·71.

The death rate was 17·0

And excluding the Union Workhouse 14·67

In Sydenham,

The birth rate was 33·09.

The death rate was 16·08

In Penge,

The birth rate was 28·81.

The death rate was 12·10

Table VI. gives the total mortality of the district for the past 17 years.

TABLE VI.

1856	1857	1858	1859	1860	1861	1862	1863	1864
345	375	409	433	455	405	497	533	598
1865	1866	1867	1868	1869	1870	1871	1872	
552	674	636	761	756	806	815	788	

Table IX., which records the nature of the diseases from which the mortality of the year 1872 has taken place, shows the total number of deaths in the district to have been 788, or 27 less than that of the previous year. This includes the deaths of those who have died in public institutions, viz., the Union Workhouse, the District Hospital, and Charitable Institutions in Lewisham Village; and the North Surrey District School, Royal Naval Asylum, and Waterman's Asylum in the Hamlet of Penge.

Table VII. gives the number of births and deaths which have taken place in the different Registrar's sub-districts in the Parish of Lewisham and Penge Hamlet, together comprising the Lewisham District, with the mortality of the several public institutions.

TABLE VII.

Registrar's Sub-districts	BIRTHS.			DEATHS.		
	Males.	Females.	Total.	Males.	Females.	Total.
Blackheath.....	81	80	161	39	36	75
Lewisham	228	203	431	82	98	180
Union Workhouse.....	7	5	12	21	9	30
Lewisham Dist. Hospital.	—	—	—	1	—	1
Sydenham	360	315	675	156	172	328
Penge	203	211	414	82	81	163
N. Surrey District School	—	—	—	8	1	9
Watermen's Asylum.....	—	—	—	—	1	1
Royal Naval Asylum.....	—	—	—	—	1	1
Total.....	879	814	1693	389	399	788

PUBLIC INSTITUTIONS.—THE LEWISHAM WORKHOUSE.

About 450 persons passed through the Lewisham Union Workhouse during the year.

12 births took place and 30 deaths.

THE DISTRICT HOSPITAL, HITHER GREEN LANE.

The Board's Hospital has been of essential service in many cases during the year in preventing the spread of epidemic disease.

18 cases (12 males and 6 females) have been admitted during the year; 17 were cured and 1 died. The nature of the diseases for which cases were admitted are mentioned below.

Scarlet fever	6
Small-pox	9
Sore throat and rash	1
Measles	1
Chicken-pox	1
	—
	18
	—

PENGE.

1 death took place in the Waterman's Asylum and 1 in the Royal Naval Asylum.

NORTH SURREY DISTRICT SCHOOL.

The health of the inmates of the North Surrey District School has been the reverse of good.

Opthalmia has been extensively prevalent, and it becomes of the utmost interest to ascertain the causes upon which its continuance depends.

From the contagious nature of this disease, when once introduced, it is readily propagated, more especially so amongst an ill-nurtured pauper population; and nothing is required other than the neglect of hygienic measures to

vi vivify any contagious germs which may be introduced
 amongst such a class.

The medical treatment has been successful, for individual
 cases have been repeatedly cured, only, however, to relapse
 and swell the number of those affected with the disease by
 communicating it to others; therefore it is clear that some
 latent causes must still exist.

The causes I believe to be, the reception from workhouses
 of infected children; the want of sufficient water supply;
 the insufficient cubic contents of the dormitories; the want
 of ventilation of the dormitories; and the insufficient drainage.

These latter defects I have already brought under your
 notice, since which nothing has been done to remedy them.

Many complaints were made during the latter part of the
 year of the offensive odour from the land attached to the
 North Surrey District School, which may be attributed (1st)
 to the fact that the sewage is not now, as formerly, passed
 through peat charcoal to deodorize it; and (2nd) that the
 year 1872 was a very wet one, and the irrigation of the land
 by sewage has been unsuccessful, in consequence of the
 incapacity of the soil to absorb the quantity of liquid thrown
 upon it.

The North Surrey District School was for many years the
 healthiest of its class in the world, and so far as I am able
 to judge there are no physical reasons why it should not
 recover its former prestige.

Nine deaths have taken place in the School during the
 year.

WATER SUPPLY (DR. FRANKLAND).

"The water delivered by the Kent Company from deep
 wells in the chalk has again been distinguished throughout
 the year for its comparative freedom from organic matter.

"Taking the proportion of organic elements in a given
 volume of the Kent Company's water as unit, the following
 are the maximum, minimum, and average quantities present
 in each of the other metropolitan waters during the past
 year.

TABLE VIII.

	Maximum.	Minimum.	Average.
Kent	1	1	1
New River	7.2	1.1	3.1
East London	9.0	2.9	4.7
West Middlesex	11.1	2.5	5.2
Southwark	14.0	3.0	5.9
Chelsea	17.0	3.1	6.2
Grand Junction	16.1	2.9	6.4
Lambeth	18.4	3.1	6.6

"The Thames and Lea start from their chief sources as free from organic matter as the deep well water supplied by the Kent Company, but, in the winter months especially, they become much polluted with sewage and the washings of manured fields before they reach the intakes of their respective companies.

"Notwithstanding the Act of Parliament passed in the session of 1871 for the purpose of securing a constant supply of water to the Metropolis, the delivery still continues on the old intermittent system. The water drawn from the butts of consumers is much more impure than the samples drawn directly from the mains of the respective companies."

I have the honour to be, Gentlemen,

Your obedient Servant,

F. E. WILKINSON.

To the Board of Works

for the Lewisham District.

TABLE IX.—DEATHS DURING THE FOUR QUARTERS OF THE YEAR 1872.

CLASSES OF DISEASE.	CAUSES OF DEATH.	AGES AT DEATH.								Total.	Males.	Females.
		Under 1 year.	Under 5.	Under 10.	Under 20.	20 and under 40.	40 and under 60.	60 and under 80.	80 and upwards.			
I. ZYMOTIC DISEASES.	ORDER 1.— <i>Miasmatic.</i>											
	Smallpox	—	1	—	1	2	1	—	—	5	1	4
	Measles	3	6	—	—	—	—	—	—	9	6	3
	Scarlet Fever	4	28	4	3	—	—	—	—	39	22	17
	Diphtheria	—	1	—	1	1	—	—	—	10	2	8
	Mumps	—	1	—	—	—	—	—	—	1	0	1
	Quinsey	—	—	1	—	—	—	—	—	1	0	1
	Croup	—	2	—	—	—	—	—	—	2	1	1
	Whooping Cough	13	16	5	1	—	—	—	—	35	11	24
	Typhus Fever	—	—	—	—	—	—	—	1	1	0	1
	Enteric or Typhoid Fever	—	—	1	3	3	4	—	—	11	5	6
	Simple Continued Fever	—	1	—	—	—	—	1	—	2	0	2
	Erysipelas	1	—	—	—	—	—	1	—	2	0	2
	Metria	—	—	—	—	1	—	—	—	1	0	1
	Influenza	1	—	—	—	—	—	—	—	1	1	0
	Diarrhoea	28	4	1	—	—	—	3	—	36	21	15
	Simple Cholera	1	—	—	—	—	—	—	—	1	1	0
	Rheumatism	—	—	—	—	1	1	—	—	2	1	1
	Cerebro Spinal Meningitis	—	—	—	—	1	—	—	—	1	1	0
	ORDER 2.— <i>Enthetic.</i>											
	Syphilis	3	—	—	—	—	—	—	—	3	1	2
	ORDER 3.— <i>Dietic.</i>											
	Want of Breast Milk	6	—	—	—	—	—	—	—	6	2	4
	Purpura	—	—	—	1	—	—	—	—	1	0	1
	Intemperance	2	—	—	—	—	—	—	—	2	2	0
	ORDER 4.— <i>Parasitic.</i>											
	Thrush	3	—	—	—	—	—	—	—	3	1	2
II. CONSTITUTIONAL DISEASES.	ORDER 1.— <i>Diathetic</i>											
	Gout	—	—	—	—	—	—	2	—	2	2	0
	Dropsy	—	—	—	—	1	1	1	—	3	1	2
	Cancer	—	—	—	—	2	12	13	3	30	12	18
	Mortification	—	—	—	—	—	—	1	—	1	1	0
	ORDER 2.— <i>Tubercular.</i>											
	Tubercles	2	5	2	—	—	—	—	—	9	4	5
	Phthisis	4	1	1	7	49	21	3	—	85	52	34
	Hydrocephalus	8	6	2	2	1	—	—	—	19	10	9
	ORDER 3.— <i>Nervous System.</i>											
III. LOCAL DISEASES.	Cephalitis	2	4	1	—	1	1	—	—	9	5	4
	Apoplexy	1	—	—	—	2	8	5	1	17	5	12
	Paralysis	—	—	—	—	—	2	21	3	26	13	13
	Epilepsy	2	1	—	1	—	1	—	—	5	2	3
	Insanity	—	—	—	—	—	—	1	—	1	1	0
	Convulsions	19	3	—	—	—	—	—	—	22	15	7
	Brain Disease	2	—	1	—	3	5	2	—	13	10	3
	ORDER 2.— <i>Organs of Circulation.</i>											
	Aneurism	—	—	—	—	—	2	—	—	2	2	0
	Heart Disease, &c.	1	—	2	1	4	11	19	1	39	12	27
	Hæmorrhagic Diathesis	—	—	—	—	1	—	—	—	1	1	0
	ORDER 3.— <i>Organs of Respiration.</i>											
	Laryngitis	1	—	—	—	1	—	—	—	2	0	2
	Bronchitis	26	10	—	1	3	6	25	2	73	34	39
	Pneumonia	11	5	3	1	3	9	2	1	35	18	17
	Pleurisy	—	—	1	—	—	1	1	—	3	1	2
	Asthma	—	—	—	—	—	1	—	—	1	1	0
	Lung Disease, &c.	—	—	—	—	—	1	—	—	1	1	0
	Carried forward	144	95	32	23	80	88	101	12	575	282	293

DEATHS—CONTINUED.

CLASSES OF DISEASE.	CAUSES OF DEATH.	AGES AT DEATH.								Total.	Males.	Females.
		Under 1 year.	Under 5.	Under 10.	Under 20.	20 and under 40.	40 and under 60.	60 and under 80.	80 and upwards.			
III. LOCAL DISEASES (CONTINUED)	Brought forward	144	95	32	23	80	88	101	12	575	282	293
	ORDER 4.— <i>Digestive Organs</i>											
	Gastritis	—	—	—	—	—	2	—	—	2	0	2
	Enteritis	1	—	—	1	—	—	—	—	2	1	1
	Peritonitis	2	1	—	1	1	1	1	—	6	3	3
	Ascites	—	—	—	—	—	—	1	—	1	0	1
	Ulceration of Intestines	—	—	1	—	1	—	—	—	2	1	1
	Hernia	1	—	—	—	—	1	—	—	2	0	2
	Intussusception	—	—	—	—	2	2	—	—	4	2	2
	Stricture of Intestine	—	—	—	—	1	1	—	—	2	1	1
	Stomach Disease	—	—	—	—	—	—	2	—	2	1	1
	Hepatitis	—	—	—	—	—	1	1	—	2	1	1
	Jaundice	—	—	—	—	—	1	1	—	2	0	2
	Liver Disease, &c.	—	—	—	—	1	4	4	1	10	4	6
	ORDER 5.— <i>Urinary Organs</i>											
	Nephria	—	—	—	—	1	3	1	—	5	3	2
	Diabetes	—	—	—	—	1	—	—	—	1	1	0
	Calculus	—	—	—	—	—	1	—	—	1	1	0
	Ruptured Bladder	—	—	—	—	—	—	1	—	1	1	0
	Cystitis	—	—	—	—	—	—	1	—	1	1	0
	Kidney Diseases	—	—	—	—	1	—	—	—	1	1	0
	ORDER 6.— <i>Organs of Generation.</i>											
	Uterus Disease	—	—	—	—	1	—	—	—	1	0	1
	ORDER 7.— <i>Diseases of Organs of Locomotion.</i>											
	Synovetis	—	—	—	1	—	—	—	—	1	0	1
IV. DEVELOP- MENTAL DISEASES.	ORDER 1.— <i>Developmental Diseases of Children.</i>											
	Premature Birth	18	3	—	—	—	—	—	—	21	10	11
	Cyanosis	2	1	—	—	—	1	—	—	4	4	0
	Other Malformation	2	—	—	—	—	—	—	—	2	2	0
	Teething	6	9	—	—	—	—	—	—	15	11	4
	ORDER 2.— <i>Developmental Diseases of Adults.</i>											
	Childbirth	—	—	—	—	5	—	—	—	5	0	5
	ORDER 3.— <i>Developmental Diseases of Old People.</i>											
	Old Age	—	—	—	—	—	—	23	19	42	15	27
	ORDER 4.— <i>Diseases of Nutrition.</i>											
	Atrophy and Debility	27	13	1	—	—	1	2	—	44	22	22
V. VIOLENT DEATHS.	ORDER 1.— <i>Accidents or Negligence.</i>											
	Fractures and Contusions	2	1	2	1	1	—	—	1	8	6	2
	Burns and Scalds	—	1	—	—	—	—	—	—	1	0	1
	Drowning	—	—	—	—	1	—	—	—	1	1	0
	Suffocation	1	—	—	—	—	—	1	—	2	2	0
	Otherwise	1	—	—	—	—	—	—	—	1	1	0
	ORDER 4.— <i>Suicide.</i>											
	Wounds	—	—	—	—	1	—	—	—	1	1	0
	Poison	—	—	—	—	—	2	—	—	2	2	0
	Hanging	—	—	—	—	1	—	—	—	1	1	0
	SUDDEN.—Cause not ascer- tained	—	—	—	—	—	1	—	—	1	1	0
	Causes not specified, or ill-defined	10	—	—	—	1	—	—	1	12	6	6
Total		217	124	36	27	100	110	140	34	788	389	399

REPORT BY SEWERS SURVEYOR

Of work executed from Lady-day, 1872, to Lady-day, 1873.

GENTLEMEN,

Pursuant to your instructions, I beg leave to submit the following report of works executed under my charge during the financial year ending 25th March, 1873.

SEWERS CONSTRUCTED BY THE BOARD.

	LENGTH.	SIZE.	COST.		
			£	s.	d.
Lower Sydenham, West Hill, and Sydenham Hill.....	4500	3 × 0 × 2 × 0	3287	0	0
In connection with the above works 40 gullies, 15 side entrances, and 21 ventilating shafts	1557	1 × 6 × 1 × 6			
Executed under the Jobbing Contract at Forest Hill, near the boundary of Camberwell	800	12in.			

The following Sewers were applied for by owners of private property, plans and sections being first submitted and approved by your Board and also the Metropolitan Board:—

Park Road, Dulwich Road, Penge, 12in.

Thicket Road, Dulwich Road, Penge, 12in.

Codrington Road, Lewisham.

The latter Sewer is not yet completed, but a sufficient length has been constructed to meet the present requirements.

Table shewing the number of applications to build and drain.

No. of houses to build & drain.	No. of houses to drain.	No. of additions.	Total.
272	60	64	396

Table shewing Frontage Drains, Gullies, and Ventilating Shafts executed.

No. of Front- age Drains.	No. of Venti- lating Shafts.	No. of Gullies.	Old Gullies repaired.
73	9	82	21

Number of Notices served by the Inspector of Nuisances (Mr. Robertson) during the past year, and the works executed.

To cleanse and abate nuisances.	To supply Dust Bins.	To compel Water supply.	To compel re- moval of Pigs.	Total.
93	40	30	8	171

Storm water drains have been executed along part of Sydenham Hill, at a cost of £216, half the amount being borne by the Camberwell Board.

Improvements have been made at the Hospital, Hither Green, by the erection of a new Ward, and other general repairs throughout the building.

At Forest Hill there are at present a great number of houses without an outfall Sewer, and the Board have from time to time endeavoured as far as possible to provide a remedy for the evil by offers to contribute towards the cost of the proposed works through the private property, which, however, have not been accepted by the owners, and the works have not therefore been executed.

This plan, however, when executed, will only provide for a portion of that locality; there will still remain a considerable number of houses along St. Germain's Road, leading from the point of boundary on the Forest Hill Road to the London, Brighton, and South Coast Railway, which are also without an outfall, and for which a Sewer must be provided; but the chief part of the houses being at the extreme part of the District, near Camberwell, the Sewer must pass through a long length of arable land, the whole of which, I have no doubt, will at some future time be laid out for building purposes.

The following is the route I propose: The Sewer to commence by a junction at Ladywell, near the Station at Brockley Lane; thence through a short road by Ladywell public house, and along the Valley Line in a westerly direction through private property, crossing Brockley Lane about 1000 feet south of Brockley Hall, and through the adjoining fields; thence under the Brighton and South Coast Railway and along St. Germain's Road to a point about 600 feet east of the Camberwell boundary at Honor Oak. The length of the Sewer will be 7678 feet run, or one mile 466 yards; and the following is the estimate in detail, without taking into consideration any compensation for passing through private property, as the proposed works will considerably add to the value of all the land between the watershed and boundary line.

	Ft.	in.		£	s.	d.
25 Excavations	6668	0				
	12	0				
	4	6				
	<hr/>		13336 yards, at 1s. 6d. ...	1000	4	0
25 Excavations	1010	0				
	12	0				
	4	0				
	<hr/>		1792 yards, at 1s. 6d.	134	8	0
30 Brickwork	6668	0				
	11	0				
		9				
	<hr/>		180 rods, at £16	2880	0	0
15 Brickwork	1010	0				
	9	0				
		9				
	<hr/>		22 rods, at £16	352	0	0
			13 side entrances, at £15	195	0	0
			30 ventilating shafts, at £6 10s.	195	0	0
			6668 feet run invert blocks, at 1s. 2d.	388	19	4
			1010 ditto ditto at 1s. 1d.	54	14	2
				<hr/>		
				£5200	5	6

I am, Gentlemen,

Your faithful Servant,

W. H. TREVERTON,

Sewers Surveyor.

To the Board of Works

for the Lewisham District.

REPORT BY HIGHWAYS SURVEYOR

Upon Works executed from Lady-day, 1872, to Lady-day, 1873.

GENTLEMEN,

I have the pleasure of presenting my fourth Annual Report upon works executed in my department.

The total cost of the Highways in the Parish of Lewisham for labour, cartage, and material, &c., was £7,484 9s. 0d. This sum includes the Former New Cross Roads, improving the approaches to Lewisham Bridge, making up Peak Hill Road, and £1,071 12s. 11d. the cost of laying Tar Pavement.

In the Hamlet of Penge the total expenses of the Highways were £1,853 0s. 3d., and the sum of £501 6s. 11d. was expended in laying Tar Pavement.

I have prepared the following Table to show the quantities and description of material in cubic yards used and charged during the year.

DIVISION.	Granite.	Bombay Stone.	China Stone.	Port Phillip.	Kentish Rag.	Land Picked Flints.	Dug Flints.	Croydon Gravel.	Rushey Green Gravel.	Perry Hill Gravel.	Total in each Division.
	yds.	yds.	yds.	yds.	yds.	yds.	yds.	yds.	yds.	yds.	yds.
Former New Cross Roads	935	87	359	42	23	144	517	...	200	...	2307
Highways, Lewisham..	477	...	290	254	...	1610	596	2045½	1348	89	6709½
Highways, Penge	111	1687	...	509	2307
	1523	87	649	296	23	3441	1113	2554½	1548	89	11323½

The rainfall during the year was very heavy, being 29·89 inches. There were 193 days in which rain fell. From the 1st October, until the end of December, I may say there was hardly a fine day, or—at all events—the roads were never dry, and consequently in our absorbent flint roads they became rotten, which necessitated additional care, labor, and material.

I believe the roads and paths never were in a better condition (taking them as a whole throughout the District) than at present.

The middle of Park Road, Dartmouth Park, has been coated with granite, the sides being made up with flints.

Part of the London Road (Forest Hill, and the High Street, Sydenham) was also coated with Granite, which I believe to be a step in the right direction.

During the present year I hope to lay more Granite upon the main thoroughfares of the District.

The Steam Road Roller has been used 40 days during the year, at an expense of £2 10s. 0d. per day, including coke. I have ascertained, from the best authority, the average cost per day for working the roller, if employed during the whole year, is £1 3s., including the driver and steersman's pay, oil, coke, repairs, and interest of money for outlay in the purchase of a roller; it therefore becomes a subject worth consideration whether it would be economical to purchase a roller. As to the economy in Road maintenance in using the steam roller, I can say the road along Limes Terrace, Lewisham, was rolled two and a half years ago, and I have just had occasion to loosen the stones and put a light covering of Granite upon them. Had this road not been rolled I believe I should have had to recoat it nine months ago. Putting economy aside, I recommend the use of the roller for the sake of humanity, to ease hardly worked horses, and thereby save horse flesh. If I now put down any quantity of material I am sure to hear of it, unless I use the roller at once. Of course, had the Board a roller of their own I should use it more than 40 days during the year.

ROAD WATERING.

The greatest portion of the watering in Lewisham and Blackheath Village was done by the Board's men; in Sydenham and Forest Hill at a contract price of 8s. per horse and man; and in the Hamlet of Penge, 8s. per horse and man.

The cost of the watering during the year in the Parish

of Lewisham was £2,033 14s. 1d.; and in the Hamlet of Penge, £651 9s. 8d. A small additional length of road from last year has been watered in Lewisham and Penge by the Board's order.

Several new Stand-posts were erected, three with swan-neck pipes, which I find a great improvement upon the old-fashioned untidy hose pipes that are always out of repair. In order to water the roads as efficiently as possible a greater number of stand-posts would be required. I believe it would be found economical to have four stand-posts on every mile of road watered—a large increase upon the present number. My object in having more stand-posts is to avoid water carts going over the ground empty. The supply of water during the summer at times was deficient. The distributors of the water carts do not throw the water evenly. I am at present experimenting upon a new distributor.

LIGHTING.

There are 500 Lamps in the Parish of Lewisham lighted by the Crystal Palace Gas Company, at a contract price of £4 3s. 4d. per lamp per annum; and 390 lighted by the Phoenix Gas Company, at a contract price per lamp per annum up to the 19th of October, of £4 13s. 4d., and at the rate of £5 for the rest of the year. 42 new lamps were erected during the year. Southend was lighted; and it is contemplated to complete the lighting of Brockley Lane to the Deptford boundary.

In the Hamlet of Penge there are 274 lamps lighted by the Crystal Palace Gas Company, at a contract price of £4 3s. 4d. per lamp per annum. 5 new lamps were erected in the Hamlet during the year.

KERBING AND CHANNELLING.

I have appended a Table to this Report giving the value of the Kerbing and Channelling and Tar Pavement laid in each locality of the District during the last four years.

In Lewisham Parish Kerbing, Channelling, &c., were laid during the year in the following streets and roads:—

The Village of Blackheath was laid with new channeling, a small portion kerbed and channelled near the "Hare and Billet." Lansdowne Terrace, near the "Green Man," was kerbed and channelled. The footpaths of the Lewisham Road from Lewisham Old Station to the boundary with Greenwich have been laid with new kerbing and channelling where necessary, and the old relaid. Aberdeen Granite crossings were laid as follows in Lewisham—Near the "Roe Buck," Beaufort Gardens, Granville Terrace, near the "Albion" Public House, College Park, Avenue Road, Limes Grove, Morley Road, Court Hill Road, and Park Street.

In Sydenham and Forest Hill similar crossings were laid at Park Road (West Kent Park), Stanstead Lane, Park Road (Dartmouth Park, two crossings), Perry Vale (two crossings), Queen's Road, Derby Villas, Raglan Street, Sydenham Park (two crossings), High Street, near entrance to Jews' Walk or Sydenham Grove, Peak Hill, and Peak Hill Avenue. A portion of the path from the turning to Forest Hill Station, opposite the Post Office, to the Railway Bridge, kerbed and channelled, and the old material re-set. The southern footpath of Wells Road newly kerbed, and the channelling re-set; also northern footpath from Bell Green to near Sydenham Green kerbed and channelled where necessary, the old material re-set, and a portion of Perry Vale kerbed and channelled. For the cost of this work see the Table.

In Penge the following work was executed: kerbing and channelling corners of the following streets, viz.:—Penge Lane, Queen Adelaide Road, Forbes Road, Thornsett Road, Green Lane. Kerbing and channelling in Maple Road, and portions of Dulwich Road; kerbing and channelling portions of Croydon Road, Anerley Road, and a small portion of kerbing and channelling in Hamlet Road. Two Granite crossings were laid, one across the Anerley Road, near the Maple Road, and the other at the junction of the Maple Road with the Dulwich Road. The cost of the entire work is stated in the Table.

TAR PAVEMENT.

I wish to say the Tar Pavement on the footpath from the Mid Kent Railway Bridge to the "Hope" Inn, Loampit Vale, has now been down four years, and some of the Tar Pavement in High Street, Sydenham, Park Road, Dartmouth Park, and the path from the Old Church, Lewisham, through the Village of Lewisham, Montpelier Vale, Blackheath, &c., has been laid three years. Without comparing Tar Pavement with Rock Asphalte or Concrete, there can be no doubt these paths have been a great boon to the public and a complete success. I hope to paint the whole of them this summer. In Lewisham Parish Tar Pavement was laid upon the following paths during the year—From Bell Green to Sydenham Green; footpath from the corner of Laurie Park to George Road; footpath from opposite Forest Hill Railway Station, in Perry Vale, to near Westbourne Road; path from the corner of Dartmouth Road, opposite the Forest Hill Post Office, along the London Road, to opposite the Peckham Road; the path from Forest Hill Railway Station, opposite the Forest Hill Post Office, to the Railway Bridge, near the Devonshire Road. One pathway on Lewisham Hill from the foot of the hill to Eliot Park Road, and the other path from the foot of the hill to opposite Eliot Park. The path in Blackheath Village from the "Crown" Hotel to Lloyd Place, the path along the shops, &c., at the "Hare and Billet," and the pathway along Lansdowne Place, near the "Green Man," Blackheath. There are 8,667 superficial yards in the whole of this work, and the actual cost was £761 6s. 6d.; after deducting cost of crushing machine, &c., &c., which will make the pavement, say 1s. 9d. per superficial yard. The crushing machine was not purchased until late in the year, and therefore no advantage was obtained from it. Irrespective of the Tar pavement before mentioned, I laid the Tar Pavement in Court Hill Road, Canterbury Road, Ravensbourne Villa Road, &c; in round numbers, 6,000 additional yards.

In the Hamlet of Penge Tar Pavement was laid in the

following streets—The south-west footway from the Beckenham boundary in Dulwich Road to the junction with the Croydon Road; the southern footway of the Croydon Road from the junction with the Dulwich Road to the “Robin Hood” public house; the northern footway of the Croydon Road from Anerley Road to the corner of Weigh-ton Road; the south-east pathway of the Anerley Road from the junction with Hamlet Road to near Anerley Vale; the south-east footpath of that part of Anerley Grove maintained by the Board. There were 4,728 superficial yards in this work, and the cost was £332 19s. 6d.; say 1s. 5d. per superficial yard. Independent of the above, I laid the Tar Pavement in the undermentioned new streets, viz.:—Queen Adelaide Road, part of Anerley Grove, Clarina Road, and Penge Place, together about 2,100 superficial yards. I had great difficulty in obtaining a sufficient quantity of Tar, and at times was obliged to pay as much as 3d. per gallon for it.

ASPHALTE AND CONCRETE FOOTPATHS, &c.

The footpath from Lee Bridge along Granville Terrace, and the Quaggy to the Plough Bridge, was laid with Barnett’s Patent Asphalte, at a cost of 4s. 10d. per superficial yard for footways and 12s. for roadways. There are 1,343 superficial yards in the path, and 22 superficial yards in the crossing near the “Plough.” The path from the North Kent Railway Bridge to the washway and the paths over Lewisham Bridge, &c., have been commenced and nearly finished, but I must give the cost of these in my next report. The pathways along the Lewisham Road, from Granville Park to the boundary with Greenwich, was laid with concrete by Messrs. Wilkinson, of Newcastle-on-Tyne, their price per superficial yard being 3s. 6d. for 1½in. work, 3s. 9d. for 2in. work, and 4s. 3d. for the gate entrances—the Board preparing the foundation. The total cost of the work has been £823 0s. 4d.; had it been done by Barnett’s Asphalte Company the cost would have been £1,099 1s. 8d. There are 3,641 superficial yards of footway, besides kerbing, in the work. Of course in these

matters time alone will prove which material is the most durable.

A short length was laid in one piece of concrete, forming kerbing, channelling, and footpath in Perry Vale, as an experiment. The work was done rather late in the season and the frost caught the channelling before the concrete was set, but the damage done was not material. The work stands and looks very well. The cost of laying this kerbing, &c., was £14 15s. 7d.; had the same been executed in granite, with tar pavement for the footway, the cost would have been about £18. The great advantage in the concrete is that you have a much better path than Tar Pavement at less cost.

IMPROVEMENTS.

The widening of Lewisham Bridge was not quite finished during the year. I prepared plans, &c., of the following improvements, some of which have been carried out and others are in progress. Improvements in widening the Road near Spring Cottages, and Mr. Sheppard's Cottages, Hither Green Lane have been completed. I prepared plans, sections, &c., to submit to the Metropolitan Board of Works showing the improvement to the road in lowering the gradient of West Hill, Sydenham, and likewise of all the improvements that have been carried out and proposed to be carried out in Brockley Lane for the purpose of obtaining a grant. I also commenced preparing plans for widening the two Railway Bridges in the Anerley Road, Penge, and entered into negotiation with the Engineer of the London, Brighton and South Coast Railway with reference to giving up the required land.

NEW STREETS.

In Lewisham the work of paving and forming the following New Streets was completed, viz.:—Raglan Street and Court Hill Road, except a portion of tar pavement which I recommend should not be laid at present; the undermentioned Streets are in progress, David's Road, Clyde Terrace, Horton

Street, Jerrard Street, Thurston Road, Bradford Road, and Prospect Road. In Penge the following Streets have been completed—Anerley Grove, Clarina Road, and Penge Place. The undermentioned Streets are in progress—Arpley Road, Anerley Park, and Howard Road. I prepared plans, estimates, &c., of the following Streets during the year—Bradford Road, Prospect Road, Lower Winchester Road, Upper Winchester Road, and Eliot Park Roads. In Penge Anerley Park, Howard Road, and Road leading to Crystal Palace Station of the London, Brighton and South Coast Railway.

DUSTING.

The cost of collecting dust, ashes, &c., in the Parish of Lewisham was £982 3s. 6d., and the sale of dust realised £70 6s. 11d. The work was done under the direction of the Dust Inspector by men in the employ of the Board, the necessary horses and carts being hired. In Penge the work was done by contract under the direction of the Inspector of Nuisances, and cost £184 5s. 0d. for the year.

I have the honour to be, Gentlemen,

Your obedient Servant,

JOHN CARLINE,

(Civil Engineer.)

To the Board of Works

for the Lewisham District.

THE BOARD OF WORKS FOR THE LEWISHAM DISTRICT.

Table showing Cost of Paving Works executed in the District during the last four years, when the present Contracts are paid up.

DISTRICT.	Year ending Lady-day.	Kerbing and Channelling.			Tar Paving.			Total for each District.		
		£	s.	d.	£	s.	d.	£	s.	d.
BLACKHEATH AND LEWISHAM	1870.	503	5	4	83	10	7	586	15	11
	1871.	2072	16	3	538	10	0	2611	6	3
	1872.	1201	6	11	617	15	9	1819	2	8
	1873.	1181	15	8	274	14	0	1456	9	8
	£	4959	4	2	1514	10	4	6473	14	6
SYDENHAM AND FOREST HILL.....	1870.
	1871.	1761	10	3	343	9	5	2104	19	8
	1872.	997	9	7	571	7	0	1568	16	7
	1873.	1198	19	11	486	12	6	1685	12	5
	£	3957	19	9	1401	8	11	5359	8	8
PENGE	1870.	} 949	17	3	457	7	3	457	7	3
	1871.				266	13	6	1216	10	9
	1872.				781	15	0	1507	3	0
	1873.				332	19	6	1135	5	0
	£	2477	10	9	1838	15	3	4316	6	0
TOTAL £		11394	14	8	4754	14	6	16149	9	2

NOTE.—The Table gives the cost of the work executed during each year.

APPENDIX.

EXTRACTS

FROM

The Census of England and Wales,

1871,

SO FAR AS THE SAME RELATES TO

THE LEWISHAM DISTRICT,

COMPRISING

THE PARISH OF LEWISHAM AND THE HAMLET
OF PENGE.

REGISTRATION OF UNION COUNTIES.

TABLE 4.—*Area, Houses, and Inhabitants, 1861 and 1871, in the Parishes and Places comprised in each Superintendent Registrar's District and each Registrar's Sub-District.* [Census 1871, vol. II., pp. 16 and 58.]

SUPERINTENDENT REGISTRAR'S DISTRICT.		Area in statute acres. *	HOUSES.						POPULATION.					
Registrar's Sub-District.	Parish, Township, or Place.		1861.			1871.			Persons.		Males.		Females.	
			Inha- bited.	Unin- habited.	Build- ing.	Inha- bited.	Unin- habited.	Build- ing.	1861.	1871.	1861.	1871.	1861.	1871.
27. Lewisham.														
2. Lee	Lewisham, part of Parish ..	370	807	25	8	959	80	29	4841	5947	1935	2390	2906	3557
3. Lewisham Village	Lewisham, part of Parish ..	3781	1326	44	13	2099	268	68	7372	11513	3355	5182	4017	6331
4. Sydenham	Sydenham Chapelry (part of Lewisham Parish) ...	1623	1656	62	77	3060	389	65	10595	19065	4555	7989	6040	11076
Lewisham (Entire Parish)		5774	3789	131	98	6118	737	162	22808	36525	9845	15561	12963	20964
1. Croydon	Battersea, part of Parish Penge (g) Hamlet	770	668	54	76	1956	263	38	5015	13202	2250	5397	2765	7805

(g) Extensive Building operations have been carried on in and around Penge, which is a detached part of the ancient Parish of Battersea, and locally situate in the neighbourhood of the Crystal Palace. The facilities for communication by railway have greatly contributed to the large increase of population. The other and principal part of Battersea Parish is in the Wandsworth District.

* NOTE. In Table 7 of the Census, the proportions of Land and Water in these areas are stated (p. 27) as follows:—Lee; Land 366a., Water 4a.;—Lewisham Village; Land 3744a., Water, 37a.;—Sydenham; Land 1616a., Water 7a.;—Penge; Land 749a., Water 21a. (p. 104).

PUBLIC INSTITUTIONS.

TABLE 5.—*Number of Persons in Workhouses, Hospitals, Lunatic Asylums, Prisons, and other Public Institutions on April 3rd, 1871. [Census 1871, vol. II., pp. 24 and 95.]*

Number of		Superintendent Registrar's District.	Registrar's Sub-District.	Parish or Place.	Name of Institution.	Total Number in Institution, including Officers, &c.			Number of Special Inmates, such as Paupers, Patients, Lunatics, &c.		
Dis-trict.	Sub-Dis-trict.					Per-sons.	Males.	Fe-males.	Per-sons.	Males.	Fe-males.
27	3	KENT (part of).	Lewisham Village	Lewisham	Lewisham Workhouse	205	103	102	197	100	97
		SURREY (extra Metropolitan).			Congregational School	69	60	9	54	54	—
37	1	Croydon	Croydon	Penge	North Surrey Industrial School	1009	580	429	936	561	375

DISTRICT OF THE METROPOLITAN BOARD OF WORKS.

TABLE 10.—*Area, Inhabited Houses and Population, 1861 and 1871, Number of Rated Householders and Rateable Annual Value of Property Assessed in the several Parishes, &c., within the District of the Metropolitan Board of Works, as defined by 18 and 19 Vict., c. 120. [Census 1871, vol. II. p. 30.]*

PARISHES, DISTRICTS, &c.	Area in statute acres.	1861.		1871.		1871.	
		Inhabited Houses.	Population.	Inhabited Houses.	Population.	Number of Rated Householders†	Rateable Annual Value of Property†
Lewisham Board of Works District... { Lewisham (including Sydenham Chapelry) Hamlet of Penge.....	5774	3789	22808	6118	36525	5720	278206
	770	668	5015	1956	13202	2168	120893
	6544	4457	27823	8074	49727	7888	399099

† From an Official Statement furnished by the Metropolitan Board of Works.

WARDS OF THE METROPOLITAN PARISHES.

TABLE 12.—*Area; Inhabited Houses and Population, 1861 and 1871, Number of Rated Householders and Rateable Annual Value of Property within the Wards into which 28 Metropolitan Parishes have been divided, for the Election of Vestrymen under the Metropolis Local Management Act (17 and 18 Vict., c. 120). [Census 1871, vol. II., p. 35.]*

The Boundaries of the respective Wards are defined in the Supplement to the "London Gazette," No. 21892, Oct. 20, 1855. The number of Inhabited Houses and Population within the several Wards have been submitted to the respective Vestry Clerks, or to the Clerks to the District Board of Works, as the case may be.

PARISHES AND WARDS.	Area in statute acres.	1861.		1871.		1871.	
		Inhabited Houses.	Population.	Inhabited Houses.	Population.	Number of Rated Householders†	Rateable Annual Value of Property†
LEWISHAM:							
1. Blackheath Ward	418	924	5492	1207	7237	1178	55479
2. Sydenham Ward.....	986	1299	8322	1901	12084	1849	108699
3. Lewisham Ward.....	4370	1566	8994	3010	17204	2693	114028
	5774	3789	22808	6118	36525	5720	278206

† From an Official Statement furnished by the Metropolitan Board of Works.

NOTE.—The Hamlet of Penge is not divided into Wards.

TABLE 2.—*Area, Houses, and Population of Ecclesiastical Districts or New Parishes, and also of those parts of ancient Parishes sub-divided for Ecclesiastical purposes, which are still attached to the mother Churches.* [Census 1871, vol. I., pp. 169 and 378].

Original or Mother Parish.	Ecclesiastical District.	Date of formation.	Area in Acres.	HOUSES.			POPULATION.			Superintendent Registrar's District in which situate.
				Inhabited.	Uninhabited.	Buildings.	Persons.	Males.	Females.	
LEWISHAM (ST. MARY V.)	3722	1624	203	54	9387	4096	5291	} LEWISHAM (27).
	All Saints, Blackheath	1859	135	346	24	14	2041	849	1192	
	Christ Church, Forest Hill	1855	679	845	106	16	5315	2112	3203	
	Holy Trinity, Sydenham Park	1866	129	489	23	...	2962	1306	1656	
	St. Bartholomew, Upper Sydenham	1855	483	824	110	17	5201	2038	3163	
	St. Mark, College Park	1871	139	336	49	28	1922	742	1180	
	St. Philip, Wells Road	1869	138	334	31	6	2218	1019	1199	
	St. Saviour, Brockley Hill	1867	194	568	119	26	3369	1514	1855	
	St. Stephen, St. Stephen's Terrace	1865	155	752	72	1	4110	1885	2225	
	Total	5774	6118	737	162	36525	15561	20964	
BATTERSEA (ST. MARY V.)	Penge (Upper), St. Paul	1867	270	596	84	18	4857	1927	2930	} CROYDON (37.)
	Penge, St. John	1851	500	1360	179	20	8345	3470	4875	
	Total	770	1956	263	38	13202	5397	7805	

