

**A woman walking wearing a back brace with a spinal indicator. Collotype after Eadweard Muybridge, 1887.**

**Contributors**

Muybridge, Eadweard, 1830-1904.  
University of Pennsylvania.

**Publication/Creation**

[Philadelphia] : [University of Pennsylvania], 1887 ([Philadelphia] : [The Photo-gravure Company], 1887)

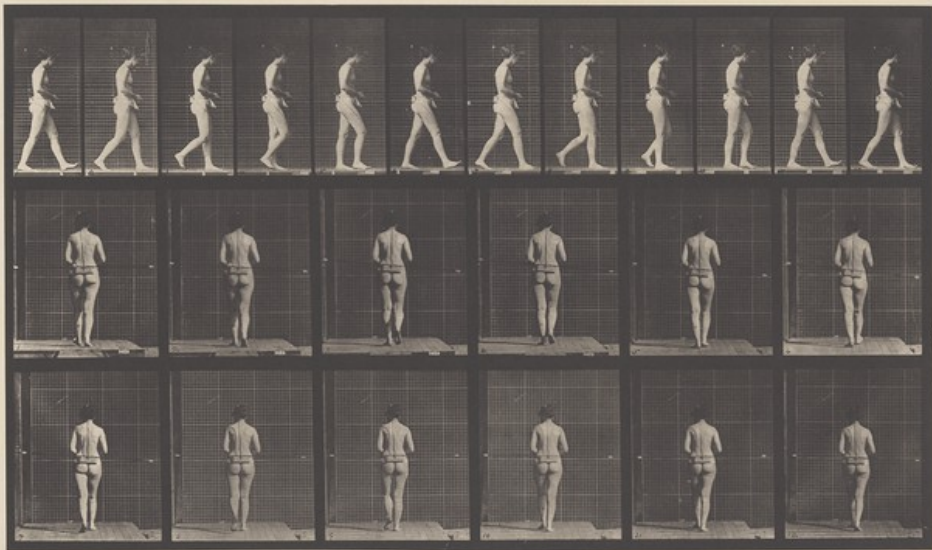
**Persistent URL**

<https://wellcomecollection.org/works/tuuj2zp2>

**License and attribution**

This work has been identified as being free of known restrictions under copyright law, including all related and neighbouring rights and is being made available under the Creative Commons, Public Domain Mark.

You can copy, modify, distribute and perform the work, even for commercial purposes, without asking permission.



ANIMAL LOCOMOTION. PLATE II.  
Copyright, 1887, by EDWARD MUYBRIDGE. All rights reserved.