

## **Ticehurst Private Asylum for Insane Persons**

### **Contributors**

Ticehurst House Hospital

### **Publication/Creation**

c.1828

### **Persistent URL**

<https://wellcomecollection.org/works/q2v9nqan>

### **License and attribution**

You have permission to make copies of this work under a Creative Commons, Attribution, Non-commercial license.

Non-commercial use includes private study, academic research, teaching, and other activities that are not primarily intended for, or directed towards, commercial advantage or private monetary compensation. See the Legal Code for further information.

Image source should be attributed as specified in the full catalogue record. If no source is given the image should be attributed to Wellcome Collection.



Wellcome Collection  
183 Euston Road  
London NW1 2BE UK  
T +44 (0)20 7611 8722  
E [library@wellcomecollection.org](mailto:library@wellcomecollection.org)  
<https://wellcomecollection.org>

The image shows the front cover of an antique book. The cover is bound in marbled paper with a pattern of brown, tan, and blue swirls. A dark red, possibly leather or cloth, spine is visible on the left side, and the corners are reinforced with red material. In the center of the cover is a rectangular, dark green label with a decorative border. The text on the label is embossed or printed in a serif font.

TICEHURST  
PRIVATE ASYLUM,  
FOR  
Insane Persons.

The Library of the  
Wellcome Institute for  
the History of Medicine



Western Manuscript  
6783  
Accession Number  
348316

*"We; the undersigned, having visited the Establishment at Ticehurst, declare ourselves highly gratified by the state in which we have found the Patients whom it contains. They are all in as good general health as is compatible with the morbidity, under which they labour—Many of them spoke with pleasure of their residence at Ticehurst, and expressed unwillingness to quit it; all expressed themselves well satisfied with the arrangements made for their comfort and convenience. This Establishment is, indeed, free from that air of gloom and confinement which is too frequently observable in such Mansions. There are in the Establishment at present, 30 Male Patients, 30 Female Patients, 19 Female Attendants, and 17 Male Attendants. With regard to the Attendants, we consider it an advantageous point in the arrangement of this House, that they are not allowed to leave the Establishment as keepers, or allowed to deviate into habits of irregularity and disorder by being removed from the eye of their Master."*

*S. B. Peckham Hichlethwait,  
Thomas Mayo, M. D.*

*Ticehurst, November, 24th. 1837.*

*"The Patients were visited in their separate Apartments unattended by Mr. Newington."*

*EXTRACT from the Observations of Thomas Partington Esquire, Chairman of the Eastern Sessions to  
the Right Honorable The Secretary of State.*

8th. December, 1827.

"We have no public Lunatic Asylum in the County, and there are only two private ones, both of which  
"are in the Eastern Division. The one under Mr. Newington of Ticehurst, (himself a Medical Man, and  
"for many years conversant in that particular branch of his profession) is upon a considerable Scale, and  
"principally calculated for the reception of Patients of a superior situation in life. I cannot but add, that  
"not only from general reputation, but from the personal observation of many of the Magistrates, it may be  
"said with confidence to be conducted in a most satisfactory manner in all respects, both as regards the  
"treatment and comfort of the Patients, and the means adopted for promoting their cure."

*"We: the undersigned, having visited the Establishment at Ticehurst, do hereby express our entire satisfaction in all the arrangement which we have observed at that Establishment for the cure and the comfort of the Patients there confined. We find the Patients in very good general health, and well satisfied with the treatment which they receive. We find that those, who are capable of attending divine service, always go to Church, where there is a private gallery and also a private pew, and that Mr. Newington is ready to admit any Clerical assistance, which is consistent with the state of the Patients."*

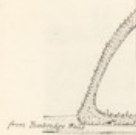
*George Courthope, Esq.  
Thomas Mayo, M. D.*

*Ticehurst, December, 1st. 1828.*

*"The Patients were visited in their separate Apartments unattended by Mr. Newington."*

Faint, illegible text, possibly bleed-through from the reverse side of the page.

1 Bayonet  
2 Col. Blue  
3 Penny Fe  
4 Gold Tin  
5 Hammer L  
6 Hammer  
7 Sphes  
8 Sphes de  
9 Sphes de  
10 Sphes de  
11 Sphes de  
12 Sphes de  
13 Sphes de  
14 Sphes de



From *Handbook of...*

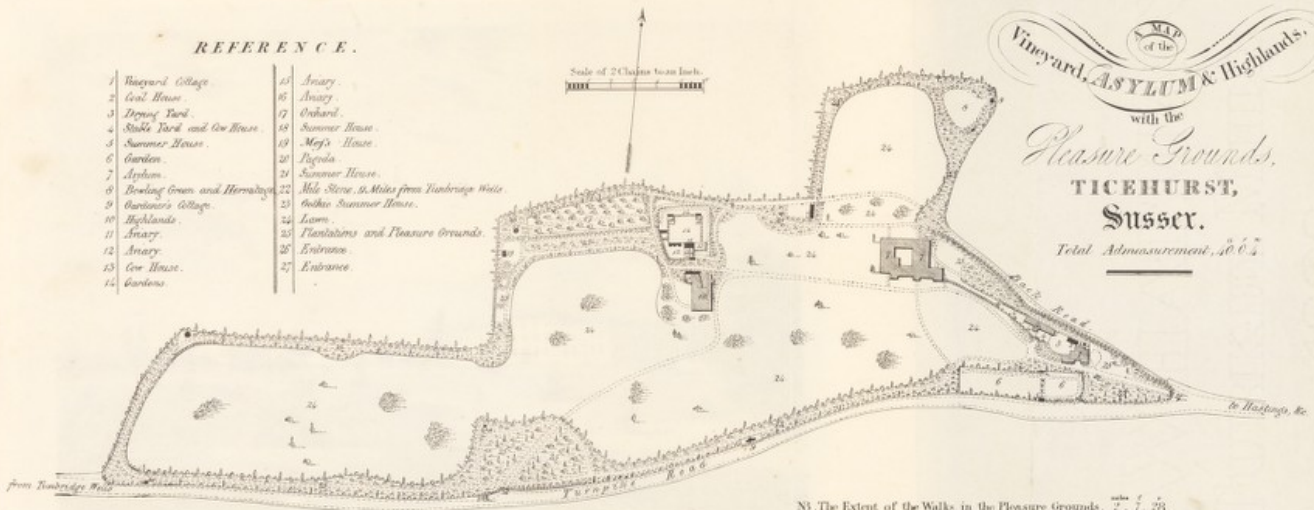


REFERENCE.

- |                                |  |
|--------------------------------|--|
| 1 Vineyard Cottage.            | 15 Artery.                                     |
| 2 Coal House.                  | 16 Artery.                                     |
| 3 Draining Yard.               | 17 Orchard.                                    |
| 4 Stable Yard and Cow House.   | 18 Summer House.                               |
| 5 Summer House.                | 19 May's House.                                |
| 6 Garden.                      | 20 Pagoda.                                     |
| 7 Lychen.                      | 21 Summer House.                               |
| 8 Bowling Green and Hermitage. | 22 Mile Stone, 5/8 Miles from Tunbridge Wells. |
| 9 Gardener's Cottage.          | 23 Gothic Summer House.                        |
| 10 Highlands.                  | 24 Lawn.                                       |
| 11 Artery.                     | 25 Plantations and Pleasure Grounds.           |
| 12 Artery.                     | 26 Entrance.                                   |
| 13 Cow House.                  | 27 Entrance.                                   |
| 14 Gardens.                    |  |

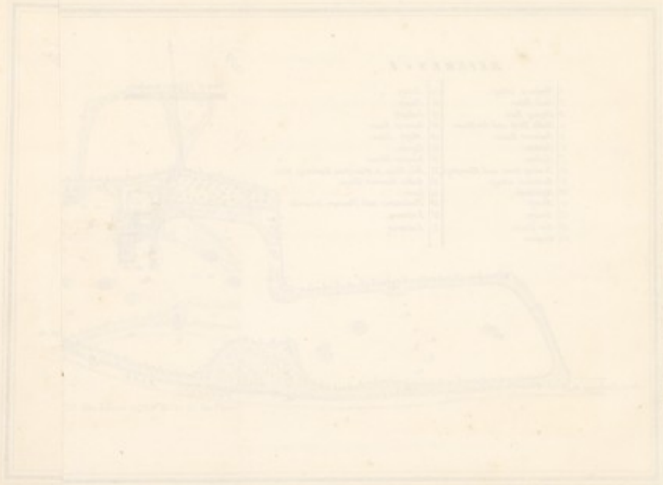
Scale of 2 Chains to an Inch.

A MAP  
of the  
Vineyard, ASYLUM & Highlands,  
with the  
Pleasure Grounds,  
**TICEHURST,**  
**Sussex.**  
Total Admeasurement, 406 1/2



NB. The Extent of the Walks in the Pleasure Grounds. 7 1/2 2/3





*A South-East View of the Asylum at Redwood, Maine.*



*A South-East View of the Asylum at Titchhurst, Sussex.*



*A South West View of the Asylum at Fitchburg, Suisse.*



*A South-West View of the Asylum at Ticehurst, Sussex.*



*A North View of the Asylum at Titchard, Sussex.*



*A North View of the Asylum at Titchhurst, Sussex.*



*A View of the Pleasure Grounds near Arroyo.*



W. H. W. del.

*A View of the Pleasure Grounds and Aviary.*

Printed by

X





*South West View of the Village of Okehampton and the Church of St. Andrew, Devon.*



*The Temple in the Forest of Dean.*



Bouvier del.

R. Martin, Lithog.

*South-West View of the Vineyard, Cottage, and the Church, at Ticehurst, Sussex.*



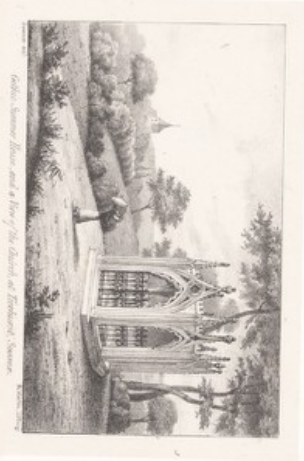
Bouvier del.

R. Martin, Lithog.

*The Pagoda in the Pleasure Grounds.*



*The High School and Silver Mountain, Va.*



*Golden Spring House and a View of the District at Richmond, Virginia.*



Bouvier, del.

R. Martin, Lithog.

*The Aviary for Gold and Silver Pheasants, &c.*



Bouvier, del.

R. Martin, Lithog.

*Gothic Summer House, and a View of the Church, at Ticehurst, Sussex.*

X



*The High School and part of the Museum Buildings.*



*The Observatory.*



Bouvier del.

Printed by R. Martin.

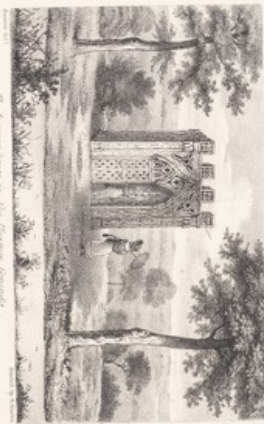
*The Mojs-house and part of the Pleasure Grounds.*



Bouvier del.

Printed by R. Martin.

*The Pheasantry.*



The Summer-house in the Palace grounds.



The Summer-house in the Palace grounds.



Bouvier del.

Printed by R. Martin.

*The Hermitage and Bowling Green.*

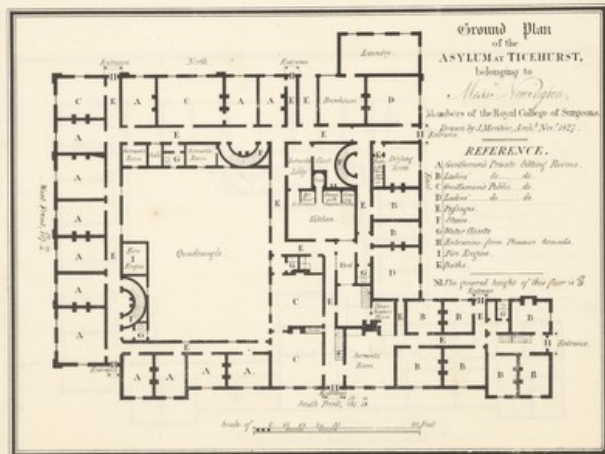


Bouvier del.

Printed by R. Martin.

*The Summer-house in the Pleasure Grounds.*





**REFERENCE.**

A. Gentleman's Private Sitting Room.  
B. Ladies' " " " "  
C. Gentleman's Public " " "  
D. Ladies' " " " "  
E. Billiard Room.  
F. Drawing Room.  
G. Billiard Room.  
H. Entrance from Piazza towards  
I. Fire Engine.  
K. Bed Room.  
L. " " " "  
M. " " " "  
N. " " " "  
O. " " " "  
P. " " " "  
Q. " " " "  
R. " " " "  
S. The general height of the floor is 8  
feet.

Plan of the Second Floor

Ground Plan  
of the  
ASYLUM AT TICEHURST,  
belonging to

*Messrs. Newington,*

Members of the Royal College of Surgeons.

Drawn by J. Mentzer, Arch<sup>t</sup>. Nov. 1827.

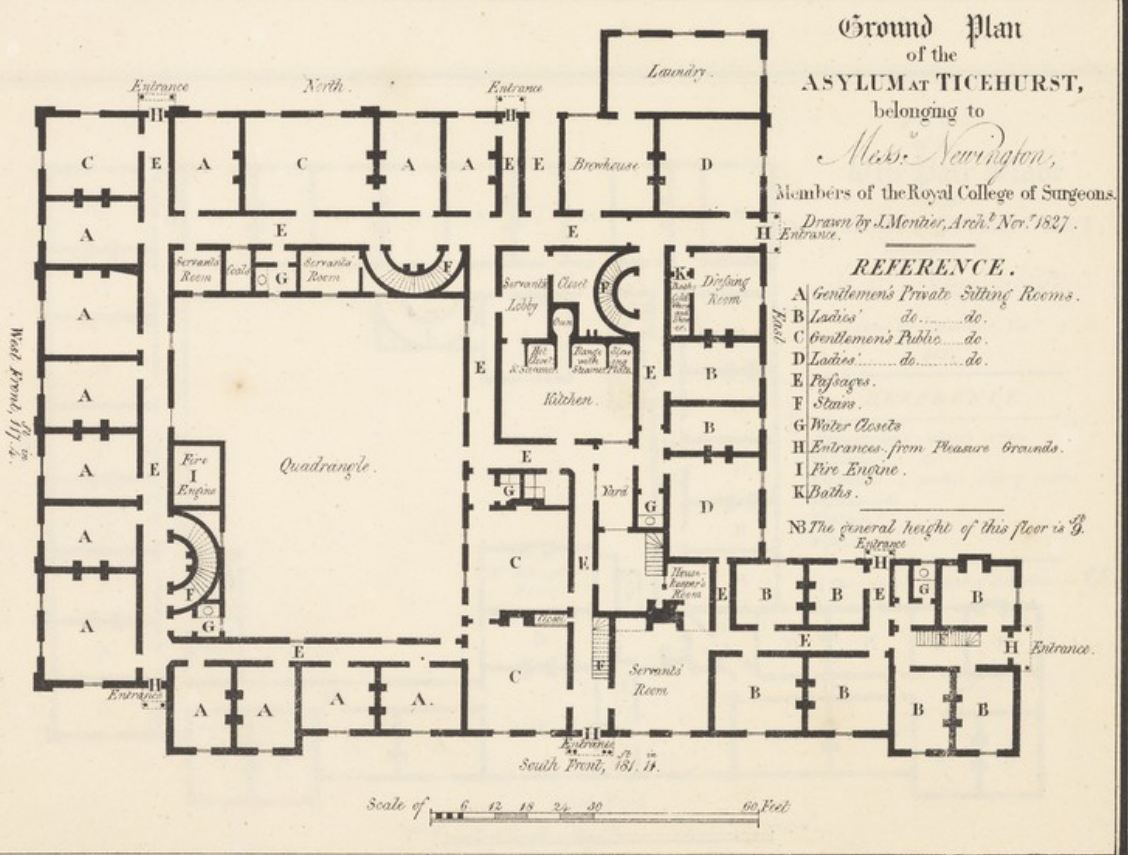
Entrance.

REFERENCE.

- A Gentlemen's Private Sitting Rooms.
- B Ladies' do do do.
- C Gentlemen's Public do do.
- D Ladies' do do do.
- E Passages.
- F Stairs.
- G Water Closets.
- H Entrances from Pleasure Grounds.
- I Fire Engine.
- K Baths.

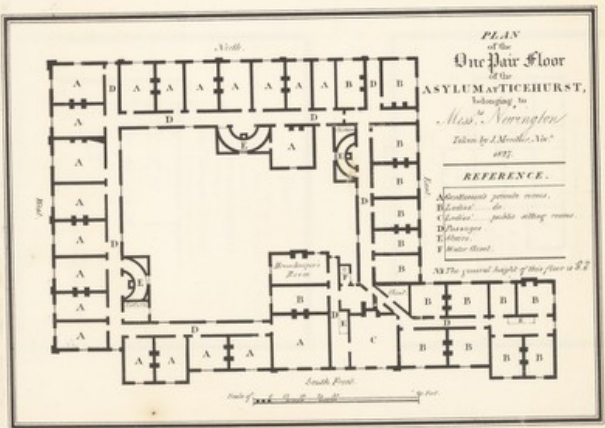
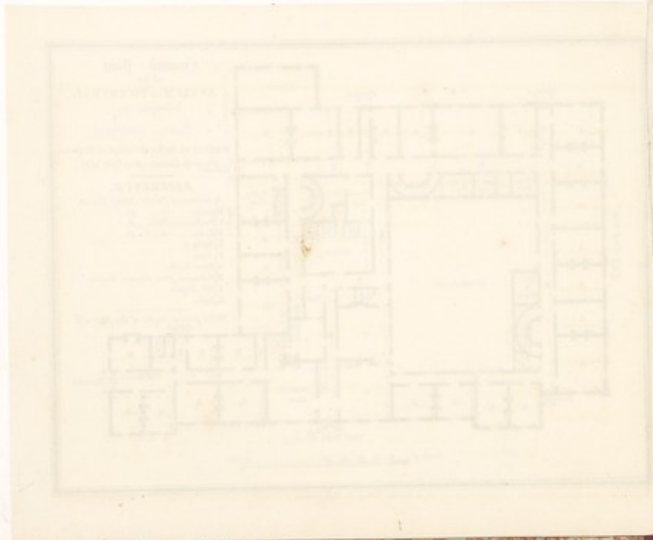
∴ The general height of this floor is 9.

Entrance



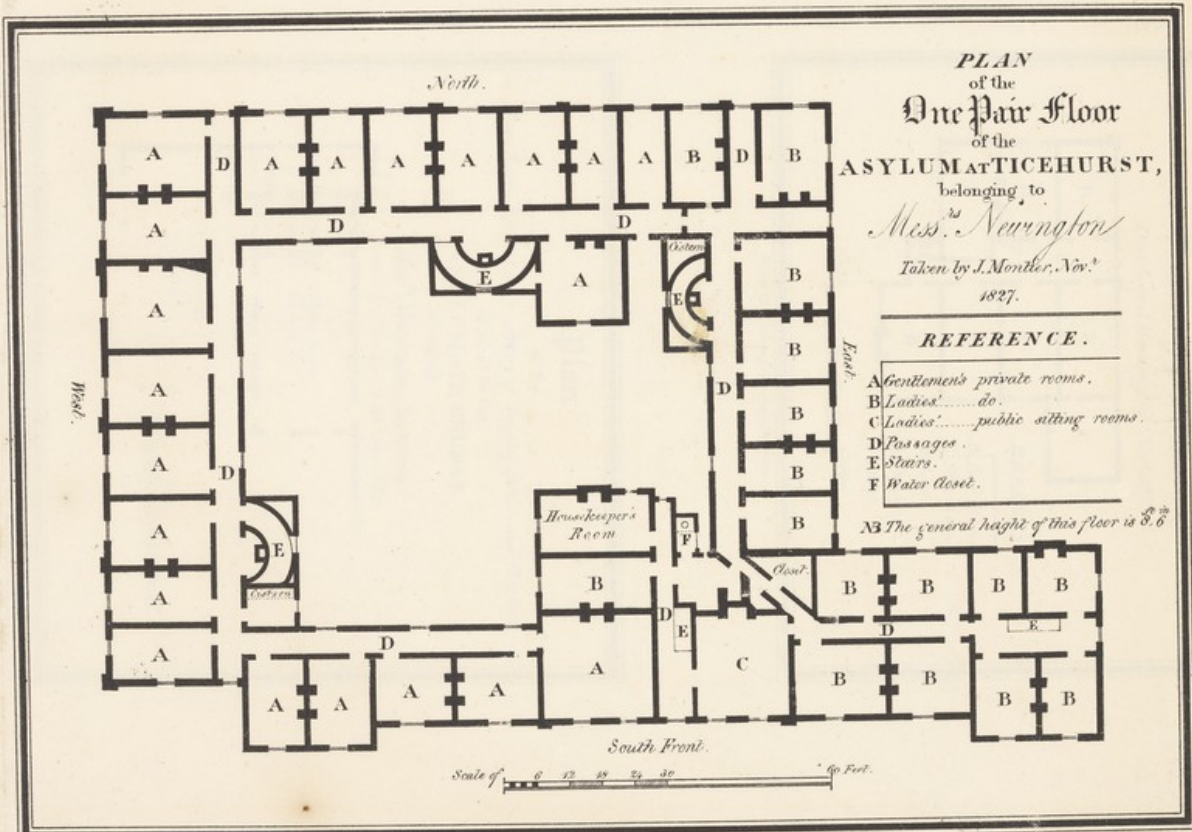
Plan of the Second Floor

R. Martin's Lithog. 124 High Holborn.



Plan of the Second Floor

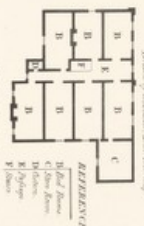
Plan of the Second Floor



R. Martin's Lithog. 124, High Holborn.

Plan of the Second floor  
of the  
ASYLUM ATTORNEY ST.

belonging to  
Miss Thompson Simpson  
Down for Alms and Clothing



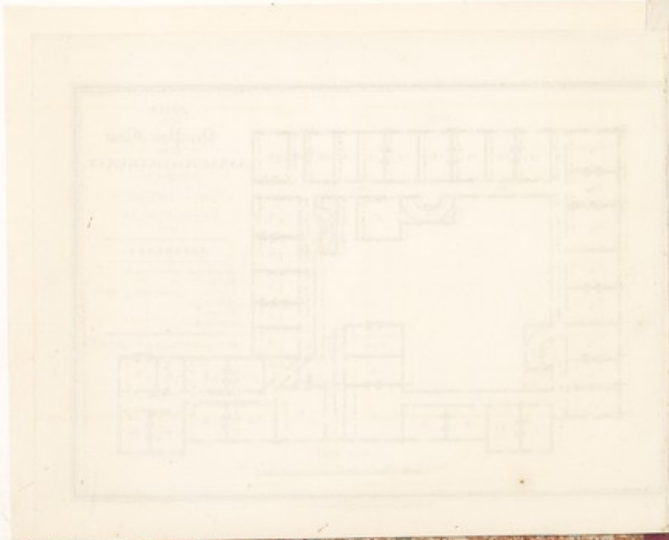
ASYLUM ATTORNEY ST.

Plan  
of the  
ASYLUM ATTORNEY ST.

Miss Thompson Simpson  
Down for Alms and Clothing



ASYLUM ATTORNEY ST.

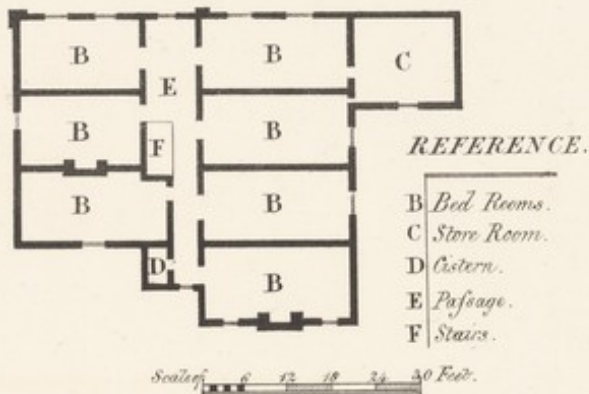


Plan of the Second Floor  
of the  
ASYLUM AT TICEHURST,

belonging to

Mess<sup>rs</sup> Newington, Surgeons.

Drawn by J. Montier, Arch<sup>t</sup> Nov<sup>r</sup> 1827.



R. Martin's Lithog. 124, High Holborn.

Plan

of the

Music Room, Reading Room, Aviary of Singing Birds and Pheasantry,

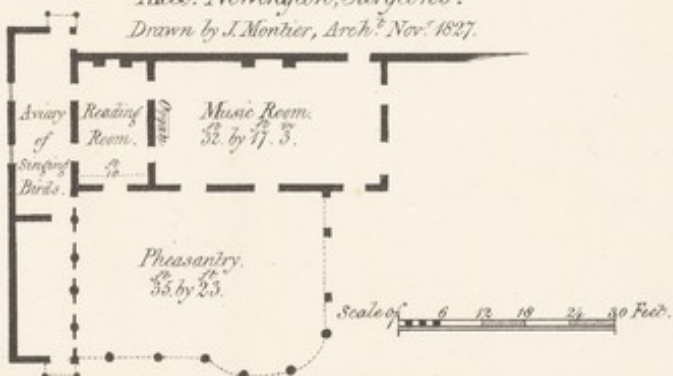
attached to the

ASYLUM AT TICEHURST.

belonging to

Mess<sup>rs</sup> Newington, Surgeons.

Drawn by J. Montier, Arch<sup>t</sup> Nov<sup>r</sup> 1827.



R. Martin's Lithog. 124, High Holborn.

