

Ansaloni, Sebastiano (pseud. Benincasa, Rutilio) (1523-1599)

Contributors

Ansaloni, Sebastiano, 1523-1599.
(pseud. Benincasa, Rutilio.

Publication/Creation

Late 18th century

Persistent URL

<https://wellcomecollection.org/works/v59qawv4>

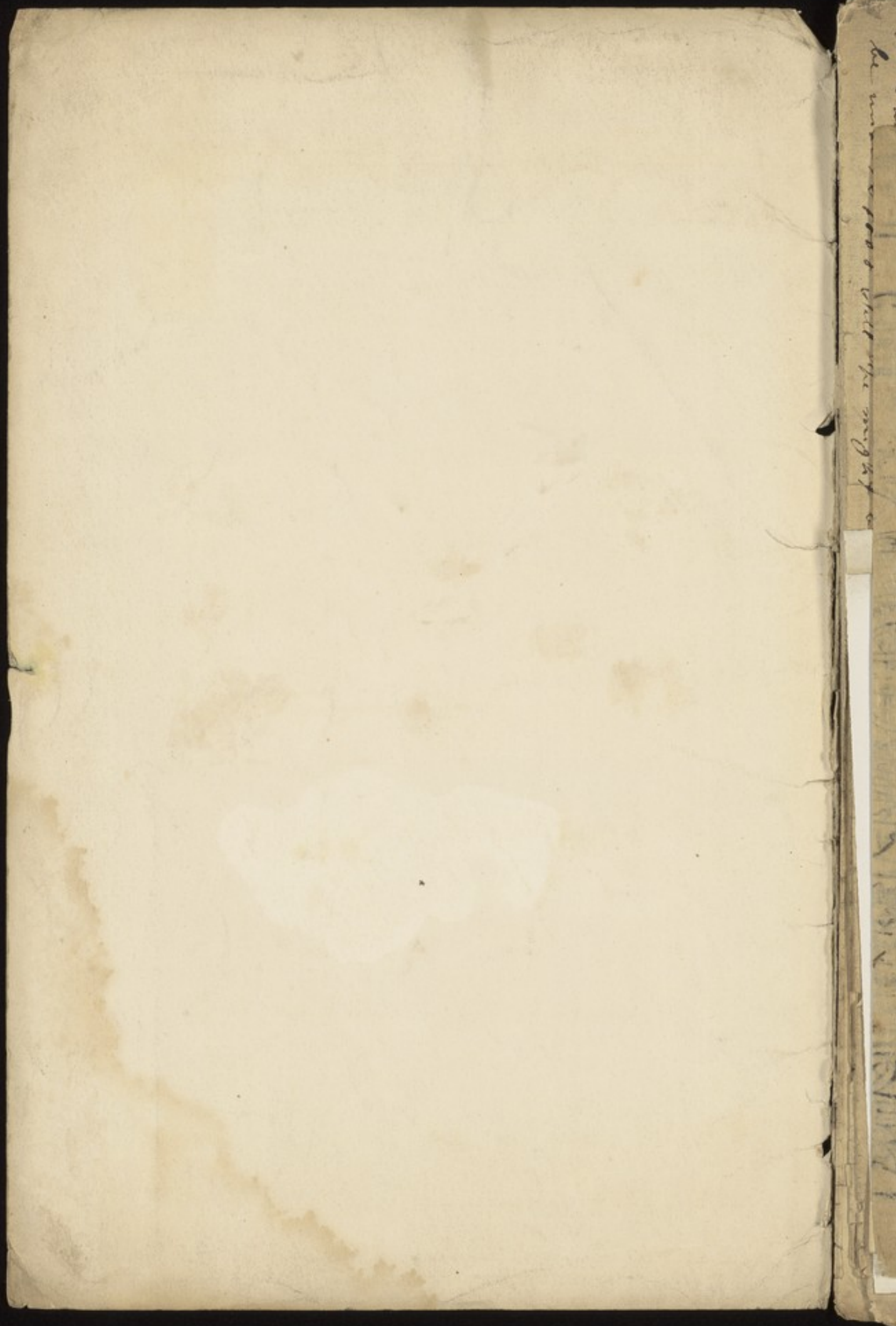
License and attribution

This work has been identified as being free of known restrictions under copyright law, including all related and neighbouring rights and is being made available under the Creative Commons, Public Domain Mark.

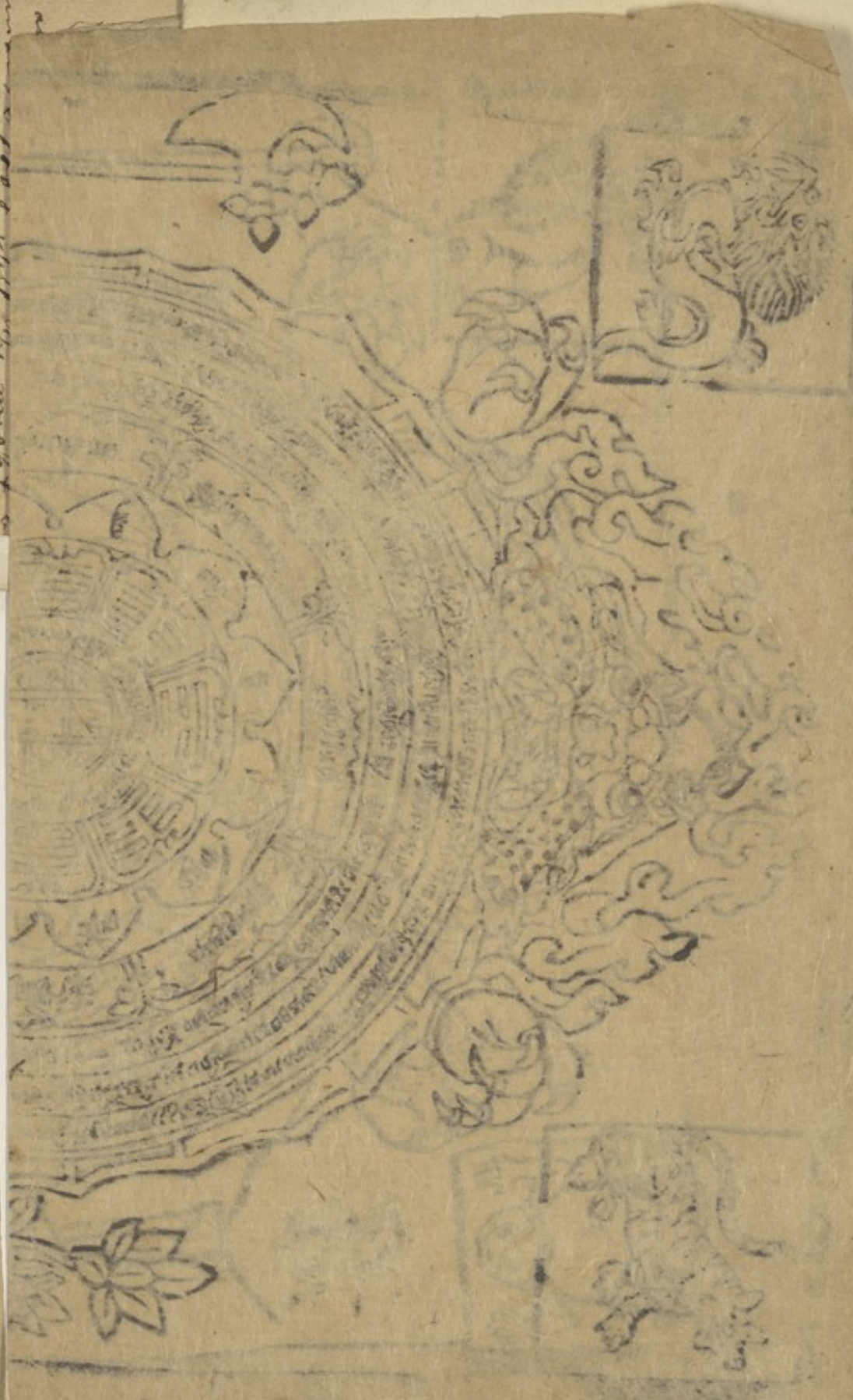
You can copy, modify, distribute and perform the work, even for commercial purposes, without asking permission.



Wellcome Collection
183 Euston Road
London NW1 2BE UK
T +44 (0)20 7611 8722
E library@wellcomecollection.org
<https://wellcomecollection.org>



The
with a
be un-
good
the
of a



The fixed impression.

The Extract or Tables of Rotals 1500

Three Δ angles is \odot Wheel

Number weight measure, account the number
weight and measure

God prosper all

The hidden treasure

Look for a algebraical number to report at the
Lottery at Rome established with all perfection
upon Mathematical astronomical and algebraical
points plainly denoted not without much
study and application by J. M. N. 17th
Hidden treasure but may be discovered by
whomever can now how to find the same
ent ~~Rome~~

Rome

Let the Name of the Lord be praised. I

The Art to speculate on future events annotations
on the fabala searching to find out
if by a Science fabala has a just right to
the name of Science therefore it appertains
to the understanding and where is only the
mind which is proper for speculating on
events not only present but showing
to come then it may be possible (as I
believe in God) that man may arrive to
his Equal not all by the formality of School
but also from the power derived from the
all infinite and this is demonstrated by
St Augustine who was adapted with insight
patience understanding above others by this
he investigated upon the most sublime Myon
which is that of the holy Trinity and therefore
wrote in a manner totally speculative
and compassed many large Volumes in a
the manner is another work with in it
the fixed influence

with although not great and could not investigate upon high Speculation as to
be understood still the might be an equal in Speculation

With the light of this noble science we search
for within ourselves for the first traces of this
art in the Mathematicke algebraical and arith-
metical rudiments also those other points conjunctive
adjective but in promise of the understanding
of such a science search for a true Key and
whereas we cannot ascend into a House for
to plainly see and examine within all its
furniture without finding its Doors, conse-
quently we cannot come to the knowledge of
this art but by a Door which Door or gate
thus we figure to ourselves and as the
same cannot be opened but with its Key
therefore let us proceed to find out the
Key.

First before you can come to this
knowledge it is incumbent for me
to explain to you other rules for understand-
ing this science. Otherwise you cannot
find (O cautious reader) the way of it
or how to work any operation for the
purpose, the which you may see and learn
from the within operations and progress
(O my beloved reader) and observe all
which is herein explained but do not
intirely but not confide therein but note
also that true wealth and felicity comes from
God and as long his the pleasure of Heaven
because that fortune will wait you.

The Treatise in which is explained by sundry
examples the manner that should be observed
for understanding the Wheel and its Triangle
with all other difficulties.

Chap 1

To work well in this Science, it becomes need-
ful for to understand, and have a knowledge of
the Solar & Lunar ^{influences} ~~influences~~ which ^{are} ~~is~~ very
essential for the operation, according to the greater
or less ^{temperatures} ~~temperatures~~ ^{elevations} ~~elevations~~ which ^{center} ~~center~~ therein ^{center} ~~center~~
Of the aforesaid points, either of the Lunar ^{center} ~~center~~ D
the ^{influence of} ~~influence of~~ ^{influence of} ~~influence of~~ some are fixed, and others, moveable.
The fixed are so called because they are always
operative in the same degree, although they never
move from their degree nor from their mathe-
matical point. The moveable are with their
name for they sometimes decrease ^{of} ~~of~~ their
operation by the ^{ascendant} ~~ascendant~~ or ^{descendant} ~~descendant~~ ^{both} ~~both~~
of the ^{sun} ~~sun~~ as of the ^{moon} ~~moon~~ D.

Chap 2

For a supposition of the foundation of
such a Science, to those desirous of work-
ing well, let me come to explain ^{with} ~~with~~ ^{influence} ~~influence~~
and where they are to be found, the ^{influence} ~~influence~~ ^{influence} ~~influence~~
fixed as well as ^{the} ~~the moveable. Examine ⁸ ~~8~~ ^{examine} ~~examine~~
and if drawn of numbers, and those of the Letter
of the month and the Day of the month &
drawing and the day of the Moon or of point
the mathematical points are 2 with 2 makes
a number, that is to say, makes one number,
whereas 3 points makes only one number
in the same manner as the 2 points, one is
said and very well may be, ~~forasmuch as~~
^{can} ~~can~~ be conformable, which will be said in its
place 3.5.7.9 points in the operation and
reckoning of the Wheel if such and the like are
acceptations very needful to be known in order
not to mistake either in the number or the
^{calculations} ~~calculations~~ of the number so drawn from
the fixed ^{influences} ~~influences~~.~~

4th Deduce the prize month of the Letter of the
Month in which is wanting to know what
Numbers will be those drawn, viz. February,
has the same Month the fixed influx 10,
fundamental property 5; by points and Number
2, which makes 10; therefore the Month of February
has always the influx ^{and} No¹⁹ as will be seen
in its proper figure ~~as points~~ and the No¹²
which makes 10; ~~therefore the Month of February~~
~~has always the influx No¹⁹ as will be seen in its~~
~~proper figure~~

There ^{are} moveable ^{there are} commonly ~~are~~ two, one of the Sun
and ~~another~~ ^{the} other of the Moon; that of the Moon is taken out
from the Day which ^{belongs to} the Moon, whence how
many Letters has the Day ^{attributed to} ~~compounded~~ the Moon
so ^{is the} Number of the ^{influx} ~~influx~~ ^{viz} the Moon
has 5 of Day that is, 7 is its number ~~which makes~~
^{5 in calculation} ~~five is computation~~ of 7 Letters. Those of the
Sun are the numbers which ^{are} taken from ^{calculated} ~~computation~~
those of the Day in which the drawing is made, viz
^{that} made on the 20th its number will be 7, ^{comparing} ~~making~~ the
allowing to the 20th consists of 7 other Letters and the computation
should be well made, otherwise ^{no operation} ~~cannot~~ be done
any ~~operation~~ to the purpose.

Chap 3

In Discovering the Solar & Lunar Influxes there
is made this noble experiment in whatever man-
ner you choose by the present science or for better
saying by the founded sporting ^{numerical} ~~numerical~~ which
then in the operation with rule and conformable to
art should be laid out in lines according to the
instructions of ~~arithmetic~~ the numbers as required
which is found in the proper figure and Tables in
this Treatise, ~~made out in its place~~; Thus, First
of all the influxing number of the Months, Secondly
the equal number antedixing, Thirdly
the number of the Astronomical figure which is
formed from numbers and of points, as is said above

after the Number of the Moon, then that of the Sun, but in the unequal Months is not made well that one number and point of the number of the Month, if ^{the} Number of the Moon, & ^{the} number of the Sun and then ~~is~~ cast up; but observed that the Solar number is put after the number of the Month. viz

~~of~~ the month of February

Number of ^{the} month	10
Number of the Moon at influxing	5
Number of the figure of point	4
Number of the Day of the Moon	7
Number of the Day of the Solar Month	7
Sum of ^{Sum}	33

of the Month of August unequal

Number of ^{the} Month	8
Number of ^{the} point	5
Number of ^{the} Moon	13
Number of ^{the} Day of the Month	10
Sum of ^{Sum}	36

Chap L

Making such a Sum you go to the Triangle and begin to reckon the Sum taken out from the Number of the base of the Triangle, which is 23, and joined to 60 account the advance is returned to reckon from said 23 say the advance of the same sum in a manner that the sum of the 36 gives the 60 to the Triangle, and the sum of the 33 gives to the said Triangle one 22, then one such number given, which is from Triangle, if looked for, ~~it~~ ^{will} be found in the wheel, and found of such substance is agreed to the Sum or ^{from} the above or to the bottom of the Wheel, that is to say, the Solar or the Lunar to the tenor of the

increase or decrease ^{of the stars} ~~Arctury~~ and this is in the art of
working well in such sporting numerical ^{or} which
if the account is truly made may be the cause to
obtain what is desired ^{very} the true way ~~to~~ to give ~~it~~
understand, ~~and~~ in the best manner that is possible
th.

Chap 15.

At the Triangle is reckoned the sum as is said and
where, and the afore said sum viz the number by
the wheel, and this number is called measure or
Tale, . The Wheel ~~which~~ is called only composed of
numbers according to the points and degrees of the
Sun and ~~the~~ Moon, and which begins from 1 to
68 is generally as the successive degrees that the
Sun has perpetually, such belong always to ^{any} ~~the~~
of their Influ^{ences} ~~ences~~; thus the Moon, which begins from
70 to 90, equally ordained on account of its successive
as well as perpetual degrees, ~~as well as perpetually~~ ^{to do} which have with the
Influ^{ences} ~~ences~~ ^{to do} in a manner, that according to the
mathematical and algebraical rules, there is not
a number but ~~that~~ has its astronomical Art
according to their successive ~~the~~ ^{influences} such as
gained the number in any time of their Exaltations
and then ^{again} ~~become~~ on account of its algebraical
Rules, such ~~parts~~ and revolves the difficulty and
discovers with union of Solar and Lunar degrees,
or their ^{concord} ~~accord~~ or discord, and which are the collected
numbers in the choice of one of them for the
Wheel to agree with the Sphere, ~~the Sphere~~ as well
Solar as Lunar (let it be accidental or Voluntary
the reduction of one number and not another) ~~for~~
~~that~~ does not in the least alter the Solar and Lunar Influ^{ences}
in that ~~are~~ taken by man ~~one~~ ^{both} ~~least~~ the other
~~may~~ in truth be taken as ~~may~~ ^{pleases}, but ~~should~~
~~not~~ take ~~but~~ ^{only} that which ~~should~~ comes out that has
the name ^{which} agrees with the other in that drawing
It is not a thing certain evident or infallible that should

9
that ~~should~~ come out, the sum of such number of
in such a number and not another, but this will be
any name may be, and is, taken; ~~this and not that~~,
therefore this Astronomical and algebraical Science
is precisely as the ~~anagram~~ ^{anagram} which being literal
can't have but that Letter which ~~has~~ in the pro-
position, thus in this Science the future drawing is
one ~~anagram~~ ^{transposition} numerical as said of the
number weight and measure. Consider well ~~in~~
~~the~~ ^{the} ~~anagram~~ ^{anagram} take notice of the numerical influence
according to the Base with the fundamental sum
of Solar and Lunar Degrees in a manner which
truly deduces the ~~calculation~~ ^{calculation} and sum of such
numerical influences, but ~~because~~ ^{by reason} ~~the~~ ^{though}
necessity, of ~~consequence~~ ^{consequence} should result ~~from~~ ^{from} the
antecedent the sum of the stranger literally, but
you should not believe, ~~that~~ ^{but} because this Science
is very certain, for when one knows well how to
understand, it is as true as God is ~~infallible~~ ^{infallible}
and then as ~~what~~ God says himself and by others, "it
is eternal and infallible truth, in case you do not
trust in such ~~this~~ Science and then by more care
and in particular by two, the one because it is
very easy for the operator to mistake in the
operation, the second is, because future events
depend entirely on God; therefore ~~keep~~ ^{keep} yourself
from such numerical play for a pastime
and ~~do~~ ^{adore} the most high, if you receive
benefit, admire the divine goodness that ~~to all~~
things has given ~~at that time~~ ^{all wisdom} shows the Number
weight and measure. Also adore that goodness
of the most high and with surprise admire (but not
without confusion) the divine providence, for as
much know well to reflect on and learn to deduce
the numerical consequence with its proper key
according to its weight, let it be from sound
or ~~the~~ ^{value} numbers and measure of the sum,
Solar & Lunar, as well as fixed ~~numbers~~ ^{amovable} numbers
~~marvellous~~ and you will see to do something
pure and catholic, ~~without~~ without fraud or

mistake, having its foundation on the certainty of the Sphere
 Solar and Lunar, as much in the growing influx of the
 Quality of the fixed Degree as moveable and equally of
 all the Planets, for as much as they are perpetually in
 their course; thus always sublime things are influen-
 ced according to their weight number and measure.
 It is of no consequence to say why the 88, ^{is} given
 to draw unity once, the 82, the 6, the 69, the 71 and once
 again with the 55, and the 67, because as such an order
 and the motive is such this day viz the Sun is in the
 Trine with Mars and tomorrow in the Sextile, certain-
 ly it is by no other ^{mean} than ~~by~~ divine position that
 the Sun is with the Planets and ~~thus~~ ^{is} found
 as such according to time and the different ways;
 thus also the numbers ^{answering} according to the different
 degrees of the Sun and Moon according to their
 just influx ^{influx} moveable or fixed, diversify, grow
 and unite, then diversely inflicting ^{causing} sundry num-
 bers, given at different times and this is
 sufficient to give diversion to the curious and ^{as to}
~~those who~~ ^{those who} not understand such science, this
 being such and what is known from the ~~out~~ ^{same} name
 definition of the science ~~due definition of the~~
~~Regne Lionum certum evidentum hoc est hinc~~
~~parum et par chypere tunc de yano.~~

Chapter 6.

In the explanation of the ~~figure~~ ^{figure} Solar & Lunar, the Wheel
 is ^{composed} of numbers relative to the successive
 perpetual Months of the Sun and are just 65. ^{As to}
 the different aspects of the Sun towards the planets
 and numbers which reflect ~~the~~ the degrees of the Moon
 with the Sun towards the Planets are ~~and~~ reckoned
 29 according to their general and ^{continued} course, and
 on that account Number 66 is excluded ^{of} weight
 number and measure of Solar and Lunar degrees,
 because this Number standing never could be able
 to deduce and ~~might~~ ^{might} lay ~~that~~ ⁱⁿ two ⁱⁿ ^{order} ^{to}
 have the total ^{confusion} on this act, there may be
 the trine of the 35 of the 36 of the 23 and of the 7 all dupli-
 cated because in the trine of the 35 and of the 7

9
It is regulated with art, and if ever drawn in the part
of Rome or any other place ^{wherein} the growing influx
is equal in its Issue from unity of the one 35 and 30, in
both are made ^{into retrograde} ~~backward~~ course to lay hold the duplicate
Sextile and moderate the influx ^{even}; the 66 is also excluded
from Rome; for the small hold it has in the harmony
of numbers and if ever should come out will be a
compound as the Comet or other ^{such appearance in} ~~strange~~ sides as they
air has ever any pretence to the beginning of the
unequal Months whenever begins the unity of the
Wheel and its center the 65 and 3 makes 68, the beginning
of the Moon in the equal Month is the number 70 and
its centre in the 90 and the Number 20 the Centre
where it ends the stranger in the unequal L.V. Of
The Wheel as ^{well} in the Solar as the Lunar ^{degrees} has its
apositions but particularly in the Month ^{unequal}
therefore the duplicate numbers are stationed as
the 63 the 53 ~~in the~~ 72 the 9 and in the 82 the 8, as is
seen what Joynt numbers should be marked in the
unequal Months and it is there ends the ^{calculations} ~~computation~~
therefore the casting numbers does not lay in the
equal Months, such enjoy a successive and regular
way as ^{well} in the Solar as Lunar degrees, with
this ~~it~~ but it should recommence ^{with} the variation
of a Number which was out another stranger number
in such case it goes to find that stranger and from
thence will commence the variation, to 60 there is a
stranger, such as the Number 5, in such a case we
ought to ^{try} to ^{find out} ~~refer~~ the same and ^{begin the} ~~there~~ again by
the variation; but if this is found where it ends, with
casting numbers that ^{are} set down, the Month of
September must be an unequal Month, however
it has all the rules of the equal Month in the
drawing of the numbers and gives information of
the successive numbers. ~~for example~~
In the Wheel is some is seen such an art
in the ordination of Numbers which can never be
understood but by a Person who has ^{known} ~~known~~ the

Edge of the ~~Star~~ ^{Stars} and ~~can~~ ^{understands well} by algebraical rules ~~will~~ to count and resolve the most difficult question, let it be of things certain as well as those compatible!

The Wheel ~~only~~ ^{but} contains 94 Numbers, are in fact only 89, but having five replies (or duplicates) therefore say 94, the replies are by the successive union of the combinations, such as could not be given without such ^a ~~jointure~~ ^{combination}, however the replying Numbers are 5, the ~~Seven~~ ^{five} which is the regulator of the moving in ~~face~~ ^{which} in the quarterly ^{column} regulates the combination, the 23, the 26 the 25 the 36 and such like Numbers duplicate are as combinations of the combination so very needful for such a science which without cannot deduce true things.

The stranger Numbers as ~~have~~ ^{was} said are on 1. 3. 5. 7. 8. 9 and 53; between these are not to be put down the 2 nor the 4 nor the 6, for they would remain with their position backwards; the astronomical and algebraical points, except between ~~those one~~ ^{this one} (8) which by that ^{draws} the 9 ^{which} that equally ends with 8, the Number 90; such is the foundation of this treatise and upon such is looked for the combination and what is one Number ^{with} another and ~~which~~ ^{their} sum. / NB It should be observed each time in which the drawing is made (as ~~suppose~~ ^{instance} for ~~base~~ the N° 90 say 90. 1. 3. 5. 7. 8. 9. 55) extract, ~~its~~ diminish or draw.

Chap. 7

In this Chapter ~~for more intelligency~~ ^{are} made ~~remarks~~ ^{remarks} of many things although of passage but in particular will discover ~~the~~ ^{the} manner which should be had in drawing the Numbers and after the points in the unequal Months as is said of the casting Numbers of recital falls in such ~~which~~ ^{as} have another and out of itself, such always ~~out~~ should be marked and tried but in such equal Months ~~that~~ ^{that} which is there found ~~the same~~ beneath the other which is to be drawn out, because ^{it} proceeds ~~from the start~~ ^{from the start} or of the Astronomical rules; ~~which~~ ^{which} from which ~~the things~~ ^{the things} should be laid out ~~the things~~ ^{the things} and should be attentively considered, that is to say, the sum, and measure, weight, Value and weight; the sum ^{produced} ~~should~~ should be carried with the same to ^{the} triangle where it sustains the measure and ^{the} with ~~the~~ ^{should} be ~~carried~~ ^{brought} to the Wheel and ~~to~~ find out which Number gives to you the ^{Triangle} and this ~~made~~ ^{being done} carefully should be carried to the bottom or the top of the Wheel always a ^{one} Number ~~more~~ ^{more} than ~~an other~~ ^{an other} ~~weighing~~ and besides weight should consider the Key which ~~will~~ ^{will} be seen in the alphabet laid out in order; the manner of drawing the Number which is laid out to play you will see in full in the examples ~~which are made~~ ^{at} the end of this Book; of the said ~~at~~ ^{at} ~~the~~ ^{the} the sum is certain if called to one ~~from~~ ^{from} a one according to the true rule in the mathematical ~~figure~~ ^{figure} Book should be kept

12 from the beginning to the end, that is to say, that
^{what} is done in the casting; however ~~without~~ ^{it} which may
be done of numbers out of the enquiry ~~must~~ ^{therein}
only should not go ~~more~~ higher and ~~will~~ be
to determine that number on which will
~~determine~~ ^{fall} such, then should be laid down,
taking ~~should~~ take still one ~~there~~ from the
same, does not follow the negative but
from that on which ~~follows~~ ^{is added} that record as
there is understood of 3. 4. 5 extracted,
for untill the end of drawing you will say
cheerfully ~~for~~ to try the chance but not
force it, if thus you carefully and ~~truly~~ ^{truly}
numerate the Solar day as well as ^{the} Lunar
if you will learn easily if you can hold or
arrange in such a manner all the operations
as you will see more plainly with examples
in practice.

Chapter 8th
The Letter V. so made denotes that should be
silent, that is to say, that this has no voice
and also of itself does not contain any Number,
and sometimes that the Numbers have a
beginning from the sound of the Letter V viz
20. 21, then is taken the Letter which follows
as 23. 24. 22 to the end that in a manner
that agreeing with the planets should produce
this effect which is proper to their motion
and ~~to their~~ ^{is} inflexion because all that is
laid out upon this, and according to their
motion, let it come to raise up the operation
power which gives us their ~~benefit~~ ^{good} and
bad inflexion.

Chap 8

Of the first astronomical figure.

This figure contains the antecedent and circular numbers. ~~the~~ the antecedent served for the equal months, ^{such} as ~~under~~ January February March April May June, which have their position of the compounded numbers ~~for~~ ^{to prove} the number of the month as ~~of~~ ^{the} ~~the~~ Number 14, the antecedent Number ~~as~~ the 9, ^{see} at first is the weight of 14, which is 12, but is ^{added} to the Number, it makes 23 and gives ~~the~~ 11, from 12 is ^{reduced} above and will give 18 number ^{extracted} the Numbers, circular and Lunar are those of the sphere, as January 5 and 3 ^{of} points, February 2 and 4 ^{of} points, May 9 ^{of} 3 points and such sections ^{and} and points served to find out the Lunar Number, and if ^{add} 1 Number to the Day of the D. ^{and} the points will ^{afterwards} serve to find out ~~the~~ the Numbers, viz February 14 1732 are 18 of D 2 of circular Numbers makes 20; weight 7, ~~established for base~~ then February has 4 circular and Lunar points that makes two Numbers ^{alloying} for each 2 points; one N^o therefore (2) weight 3 is ^{reduced} from 2x3 ~~three~~ Numbers and ~~with the 14th N^o extracted~~ ^{the} is found ~~together~~ the circular and Lunar Numbers equal to the N^o of the D, ^{which} is weighed one of the same viz the Month of April 1732 was the 17th of the Moon ~~and~~ ^{twice}

extracted and found together

7 of ^{Number} N^o gave one 7 ~~game~~ of vol. 6 is
 reckoned above 6 above towards the Lunar ^{point} and
 gives 28 in the equal Months, the points are
 equal each 2 points ^{to} say one Number, the
~~only~~ ^{only} Month of July is without points ~~July~~
~~Vacant~~ because is without points but ^{August} ~~August~~
 has 189 makes 19) August 10 points and three
 Numbers. December 9 points 184 N^o, there
 fore if ^{the} weight of the drawing the N^o and
 after ~~With weight~~ will go to the Triangle
 as was in 1732 24 July if ^{weight} the 2th gives
 the 14 ~~the~~ to the ^{triangle} ~~A~~; observe from 19 above
 to the Solar and will give the 6 in the Month
 of August if ^{weight} the N^o of ^{the} day jointly
 with the points was in the year 1732 the
 drawing is made at 30 and five at ^{the} points
 which makes 35 it gives 15, ~~the 15~~ to the ~~A~~
~~five~~ ^{gives} 22, should be weighed ^{again} and
 gives weight 10 and on that account is
 said 7 and 3 makes 10, for 20 because 7
 2 3 weighs 6.

General rule

finding 2 Numbers that begin ^{the one} ~~with~~ in note
 these and such Numbers that ^{at} speak ~~with~~
 their Value

22	4	23	24	21	25	3	26	23	27	8	31
23	28	19	29	26						16	21
25	24	22	23	21	26	19	15			8	11
C	T	D	S	2	N	O	M			4	28
5	3	2	7	4	9	8	10			24	19

Returning to the mathematical points which
 some times ^{are useful} ~~serve~~ and at another times of
 no service (but not with standing that) ^{it can}
 we must proceed and not depart ^{from} the certain
 rules and observe that the points will
 have their numbers, that is to say, make
 Numbers, ^{by} ~~leave~~ following the Mathematics ^{rules}
 that a point in conjunction of another will
 leave a point nothing left ^{than a} compound & Number and
 and therefore observe this rule according to
 the ~~great~~ ^{point} its worth in point because two
 of those make a Number that always must
 be placed in a just ^{point} with those numbers; if
 should be many, take notice ^{of one} ~~it should be~~
 remaining a point only, that does not make
 numbers, it must be left out and making
 justly the common opinion of the Mathematicians
 in the discourse of points. ^{the}
 In the alphabet in the light of this art observe
 to ^{understand} ~~pass~~ so much repetition and from many
 circumstances this is a science that merits
 all attention in the casting up and computing
 the numbers in the figure ~~for~~ to measure in
 the Wheel and not ~~for~~ to mistake, because
 you will have always what may be desired, ^{it is}
 if there is ~~no~~ an error ~~the~~ it is no fault of the
 author but of the Moon or perhaps of the
 artifices or some other cause.

The Letter of the Month & the Day of the Moon and
 the Algebraical numbers are the keys as afore
 said two points make a number and ^{it is}
 be, but when ^{they} happens one 3, one 5, one 7
 one 9 ^{these} ~~are~~ increased or diminished ^{but} ~~the~~
 said twice

viz. use of ^{the} sum or by the computation one
 23, then will ^{that} tell to the Wheel 24 and 34,
 and one 5 will say 26. 36 and one 7 will
 say 28. 38, and if one 9 will say 28. 33
 not in the equal month, is reckoned inclusive
 always the number ~~to~~ ^{the narration} having to commence
 from 2 where ~~the narration~~ ^{began} but in
 the unequal Months should begin before
 the 2, that is to say, at N° 5. in the leap
 year ~~another~~ ^{one} point more advanced, therefore
 from 3 will begin the narration, the Month
 of September tells as the equal Months,
 therefore if the casting number should
 fall in some other year, a number out
 of itself should be marked and say, but
 in the equal Month should be put such
 as found ^{in the manner} ~~as~~ ^{it} proceeds from the ~~astronomical~~ ^{Stars}
 but should ~~be put~~ ^{be put} astronomically to the
 Sun ^{degrees}. (These little pieces I put into parts
 some to stand under it and some to stand
 within it, not minding any thing of the Stars
 or astronomy.)
 (Sla Scillo in partibus ponitur ad stat vult
 illo quia autat entae non praevenit abstric
 it astronomie ~~in~~ ^{in making})
 observe ~~having~~ ^{in making} ~~for~~ to make the operation to the
 tenor of the Moore always must be considered
 the astronomical ^{rule} and that ~~beginning~~ ^{beginning}
 of the Month of March, as the Sun ~~then~~
 enters the Sign aries
 Hae sal extrat aucter regne

Chapter 9 & Last
Of the annotations to be observed

In this Chapter is noted all the difficulty that can happen in making this miraculous operation and although ~~made~~ ^{performed} be ~~made~~ in more ways as will be seen in the examples, ^{yet} notwithstanding the most easy ^{method} that ^{can} possibly ~~be~~ followed, for having with facility the wisher for intent, then observe well ^{the} keys are many, ^{the} ~~most~~ ^{principal} and necessary ^{are} too, that is to say, the Month and whether of the Moon and that will be seen in its place, the whole of the Solar ~~comings~~ ^{sum}, that is to say the weight of a Sum that is equal and can be divided into 4 equal parts as 20. 24, in such a case the measure is to be given ~~at~~ ^{of} such weight ^{there} are all the Mathematical points.

20. 24. 28. 32. 36. 40. 44. 48. 52. 56. 60. 64.
5. 6. 7. 8. 9. 10. 11. 12. 13. 14. 15. 16.

When a Sum comes to 150 gain ^{to} Weight, does not make more than 169; in such a case ^{it} is not computed after the weight but only measure as 148 added to the weight 21 makes 169, and finishing the casting up gives the only measure 11, which ^{makes} ~~the~~ 60 and proceeds to tell after 2 ^{with} only measure is 60, ^{when} the sum gives a single or simple, then is joined that simple to the sum and reckoned ^{the} same is given the Number it returns ^{of} ~~the~~ ^{the} ~~same~~ and giving the like simple ^{again} is joined to the sum and then is reckoned together either with weight or the measure, when is added 1 as viz 25 is made 26. 35 is made 36 as aforesaid, in such a case in computation will relate 3 observe if it be in the Lunar Degrees.

When a Sum is equally ^{redoubled} ~~reduplicated~~ as 33, 28 and the like then with the addition of the weight, it is made unequal and returned equal in computation of the same weight ^{which} ~~there~~ is not computed but the measure, ~~but~~ in such a case 10 is regulated twice

with the only sum; when in the sum the weight is 20
is found the number ^{is found} without measure and after ~~one~~
the 20 is extracted and the 54 with its weight and ~~with~~
the measure of the sum is drawn the 3 and then if the
only weight of ~~the~~ ^{the} quarter and such is understood
of the other when the Pole falls that is ^{to say} the measure
which is taken ^{from the top} to 51; then is reckoned from 51
~~downwards~~ 24.3 and is formed the small 19.23
46.62 and for ^{the} first 15 that followed 26 gave 68
telling from 15 gave 40 is reckoned from 19 according
to art, from 50 by the 20 and so have 21, which
makes 75, for that was 21 ^{given} from 21, the 41 for
the third, so have the 27 that is 73 if reckoned
from 73 following ^{the} art and gave 50 for ^{the} last.

When in the unequal Months the Moon has more
numbers than days of those of the drawing (the
days of drawing are the days of the Month, the days
of the D is the age) weighing such a case the N^o
of the D and after ^{that} the Numbers assign the N^o of
of the Month of November 1732, ^{were} 15 days 27 of the
D and 3 of Points, if ^{they} weigh 27 and give 13 the points
will give 4 which makes 17 ^{to} reckoned to ~~the~~
17 and gave a Pole 74 if reckon 17 from 76 above
to the Solar ^{equal} and gave ^{the} first extract to the 56 if reckoned
from ^{the} Number of points from the neighbour to
20 and gave the 3 extract 45 - coming 30 of Moon
8 of Days and 2 of points viz gave to Δ the 15 under
22 will reckon 30, from 22 above to the Lunar and
will give 78, first extract above to the Solar will
be reckoned 33, after will reckon the value the 15
with ~~the~~ points from the first extract and will
give ~~the~~ 29, when the sum falls in the Number. Note

as ~~say~~ 130.90 and ~~like~~ and gave the unequal N^o
as the 37 is reckoned from 37 above the 36. between
37.28 as afore said returned to the astronomical
points of 3.8.7.9. should be considered afterwards
So will this operation the D according to the Epact
~~and according to~~ the astronomical year which com-
mences ~~at~~ ⁱⁿ ~~March~~ at March, take likewise the
Moon according to the Epacts and do thus; if will
observe the day of the Month and afterwards the
Calendar that commences at March and after is
noted the Epact and so done is carried up by
taking out the 30, and that which remains is the
Moon which look for; if afterwards ^{it} does not come to
30 that ^{the} N^o which gives the said ³⁰ ~~year~~ will ^{show} ~~be~~
how many days the D has ~~to~~ ^{to} find out, after-
wards the Epact of each year will be done, thus
11 added to the old epact ~~11~~ and this ^{sum} will be the
Epact of the following year; if ~~by chance~~ the Epact
~~forces~~ ^{should exceed} 19, then in such a case, weight is to be taken
out, ~~all~~ the 30 so added to the old 12 makes 31,
taking out also the 30 remains 1 of Epact and as
such should ~~be done~~ ^{be done} always, and this will be ^{performed}
with facility the following year, which will be
11 and as such will be done as above and will
take out ~~such~~ ^{what} that was ~~there~~ ^{added} ~~into~~ ^{after} joining. Note
to turn to the first of ^{Month} March first Example
of 1732, although this is not in its place nevertheless
it ~~ought~~ ^{ought} to ~~be inserted here~~ ^{be inserted here} as ~~such~~ ^{the difference is not} ~~another~~ ^{the} the
difference. Note also 7 of ^{Month} March 2 of points
makes 9; 12 of day and 3 of ^{which} makes 24, reckon
to ^{the} 24 and will give 37, is said 34 if weigh
the 7 of 37 is said 36 is reckoned from 34 of January
inclusive, if entering the Solar and gives 62. if
add the 24 of 36 and the 23 of 62 and gives 44, and
from 62 above to the Lunar 78 if joined ~~to~~ ^{to}

23 from 78 is said 24 from 78 the very same Key
 of 3 and 7 and gives 3 for that 3 gives 24 if reckoned
 from 3 the Number of Δ 37 and gave 18 if reckoned
 from 18-19 and gave according to rule 41 ~~not taking~~
 this rule has ^{the} for Key ~~the~~ not so much as Month
 as 37, which 24 gives to Δ and but of weight 23. 24
 of 3 and 7 from 23, by the 7 and 24, by the 3. 7, this
 Number 3 and 5, and because ^{it} happens always
 ought to join one, but the other always ought to
 be reckoned inclusive, as for example if 23
 of 25 of 27 of 29 and so is understood of the others
 and likewise of simples of 3. four of 5-6 of 7-8
 of 9. 6 (by taking away 3) Note 2 of one 3 of 2
 2 of 3 7 of 4. ~~7 of 5~~ 3 of 6. 6 of 7. 4 of 8. 5 of 9 (this
 is according to weight) if on the unequal Month is
 joined one of day as much ^{in the} Month to the
 reverse measure of September whence comes the
 rule of the equal Month and to the reverse in
 Leap year is taken out this Day of ^{the} Month, as
 the Day of the Moon in the 15, the operation
 should be made for that in such points, now
 grows and now diminishes, but runs with
 swift course, consequently does not produce
 that purpose ^{which} we desire.

The true Key and a ^{Number} Δ not only of the Letter of
 the Month but otherwise is reckoned the Letter
 of the said Month and afterwards if taken of the same
 rule all the ^{Numbers} ~~the~~ extracted ^{Anterior} and if summing
 one after the other as will be seen in the examples
 laid out in practice ~~Seema hanc que dicitur et~~
~~extrahere cum dicitur maxime lingua fieri debet~~
~~tantum solum garantum evolue.~~
 where says the reverse that is 35, observe when

should be reckoned the equal point to 35 and as
such is stopped which ~~with~~ casting numbers in such case
is returned backwards to recount the same and where fallen
things pause and make choice ~~there~~ for N^o such as ~~as~~ before
this is likewise understood of the 36 where ~~ways~~ ~~finger~~
~~viper~~ (affli on ~~angle~~) as so much to the opposite of first
that is to say to the above where ends that which is selected
and is put in taking the measure. Note the measure
to go to the top or bottom of the wheel, that number
which subsists in Δ as much ~~there~~ to the casting
number and thus done is carried to the bottom
or top of the wheel and gives that number which
is taken and ~~of the~~ numeration is comprehended
by the 20 ~~by the~~ 30, and the 30 by the 40, and the
40 by the 50. ~~begin~~ always ^{begin} in the equal month
with the number, ~~begin~~, but on the unequal
~~always~~ do not join one like in days of the
Month as of the Moon giving the round the
Value and weight. By the round is understood the
numbers which ~~are~~ rounds the Value (21 round 24)
that which receives the letter of the alphabet M. T.
O. T. the weight after, and that which is found of
the number observe in the Table of Lunar Table
the Key; you will likewise notice in ~~the~~ place
of the alphabet where ~~the number is marked~~ ~~the number~~ in regard
of Value and will ~~see~~ ~~there~~ by the letter V thus
wrote ^{which} has no voice, that is to say, does not
reckon; therefore all such numbers which have
a beginning in this said letter ~~are~~ forsaken as
11. 20. in such a case is served with a letter
of the antecedent numbers or ~~the~~ following viz
1 says 2. 11 says 12. 20 is said by the letter
O. 18. 19 - 21 by the letter 22. and ~~of~~ ^{the} Key
of 4 is ~~the~~ 20, and 7 of Key returning to the numbers
antecedent and circular ~~and~~ points. observe
in the 8 Chapter and you will see for what
service and how to ~~operate~~ ^{manage} ~~it~~ ^{in order} to find, not only

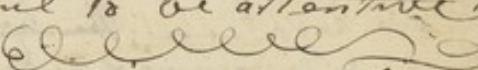
by the Solar but ~~as~~ also by the Lunar ^{what} ~~which~~ numbers
~~that~~ are drawn, that is to say, if you draw the N^o Solar
 by the Solar and the N^o Lunar by the Lunar the
 first keys of this science and the first letter of
 the Month as to Value ~~as~~ will be seen in the Tables
 and after the other which hath the Month in that
 Drawing is made the record of the letters antecedent
~~Month~~, that has the foregoing Month viz January
 X 99 and of Value 26; February 3 of Day of Drawing
 and of the Moon; observe these examples and you
 will see at your pleasure in unequal Months
 that I would say, in the unequal Months ~~N^o~~
 the putting up Numbers will fall on that ~~see~~
 (not) another out of its self ^{which} ~~that~~ will be marked
 and put as N^o elected, but in the equal Month ~~that~~
 that is in the days of those ~~very~~ Months which are equal
 should be put down ^{what} ~~that~~ is found after which
 depends of the ~~stars~~ ^{stars} and should be astronomically
 and as such, is wrote to the Solar. (There should be
 put in ^{parts in} every Month ^{over} and the broken pieces within
~~are~~ to be ^{put} ~~put~~ ^{to} a certain quantity of true
 Lunar in parts) under
 N^o but that which stands in it and without it you
 have no need to place ^{in it} ~~any~~ regard ~~to~~ the Stars or
 astronomy.

Ich Inapatus uxoribus in omnibus moribus
 supera ve it ^{et} ~~ex~~ ^{fratellum} ~~entra~~ est Ligandus
 et apponendus calla Lunare in partibus vere
 Nota Bone qui ad vlat illo vubillo qui ad vlat
 extra ne provinet ab astri et astronomica poni.

The 25 back of account of numbers simple the N^o
 40 (in the Bounds is that which constantly terminates
 from the centre in the parts) ~~interminis~~ ~~que~~ ~~est~~
~~constantis~~ ~~terminant~~ ~~ab~~ ~~extracte~~ ~~in~~ ~~opere~~ ~~hundred~~
 in Q.V.O.

as the Wheel goes above and below ^{to} likewise the alphabet
 goes up and down; by the Pole is understood the

(20 is never to be reckoned)

measure that is carried to Δ and not finding that
 of the sum ^{like} ~~as~~ ^{that} ~~such~~ of Δ in any ^{way} ~~such~~ in such
 a case ^{may} operate according to rule, that is to say, will
 begin reckoning at the bottom of the wheel towards the
 the unity where commences the solar the numbers
 extracted of Δ will be varied whence should have
 to reckon to ~~the~~ ^{progress} (the high sum) and that is
 done by letters of the alphabet as aforesaid, but if
 put in such manner ~~as such~~ that can with more
 facility ^{be} ~~will~~ ^{give} find out, the measure to be carried to
 the wheel to refine ~~out~~ the solar or lunar N^o
 that is required. the 27 to Δ says 13 as is reckoned
 there as is said thus the 37 is said 24 by the 3 and
 the 13 by the 7 and as such ^{are} reckoned the others
 in to the Pole 21 and 51 in such a case ^{is}
 reckoned always downwards by the wheel but
 if it should happen that the sum and measure
 downwards ~~for~~ to have the number for that
 in such a case the N^o has its own correspondent
 and therefore it is needful to be attentive to
 such circumstances. 

To find out the weight of the triangle or figure
 the weight of the Month ought to be taken ^{from} the
 Day of the Moon and the Day of Drawing, if
 gives by example 14 of Day, 18 of Moon, 9 of ante
 cedent numbers, 2 of point, 2 of drawing, ^{the sum} ~~sum~~
 says 39; sometimes it happens, ~~at~~ ^{tho} not always
 finding the Pole 30 and 29 is reckoned backwards
 and the remainder always goes to its correspondent
 it goes to meet ^{there} ~~what~~ N^o that succeeds Δ but
 should be observed when needful; to begin from
 unity to ^{upwards} ~~go to the above~~, in such a case, will say
 to the one ~~2~~ 2 so will be followed towards the 90,
 thus still is understood to the N^o 20. then will
 commence the notation at N^o 73 by the bottom
 and by the ^{above} ~~above~~ the 22, all those N^os that are equal
 in the weight as 5. 4. and 20 ^{will skip} ~~these~~ and
 the notation will commence with those that are not such weight

20 is never to be reckoned

as 54. 45. 35 and it should besides be observed the
 Final Numbers for having the Key, that is, to say in
 regard to round, ^{in order} for to have the N^o called up as 3. 24
 7. 23 - 2. 22 - 20. 27. 21 - 5. 25 - 9. 26 - 28 M. in R
 R in M. M in N. N in O. O in R. R in S. S in T
 T in L. L in R. ~~in~~ hoc in hoc and thus is to pro-
 -ceed to ~~commence~~ ^{according to} rule

If it should happen that N^o 10 is to serve for Key, in
 such a case it is for no value but better ~~may be~~ ^{would}
 if ~~it should be~~ accompanied by that other numbers
 of ^{as} 2. 3. 4. 5 may well serve for constant Numbers,
 the term 40 is the Centre where ends the unequal, then
 the unequal Numbers and such numbers that are
 from 40 downwards are ~~Numbers~~ ^{are} contributors which
 gives the Key and serves as small ~~locks~~ ^{that} ~~which~~ after
 gives not so much value, but ~~however~~ gives
 light for going downwards or ^{upwards} ~~above~~ of the Wheel and
 are lightness; ~~the beginning then of the Luncas and~~
 the ^{the beginning of the Luncas begin} 70, and there ~~is begin~~ the unequal Months.

The Decimes are ^{nine} 9 and all go to infer to the tenors
 of their weight and such Numbers are 40 but in
 what regards the Value, observe the alphabet, 7. 25. 26
 and ^{as} such from hand to hand ~~and~~ for better underst-
 -anding such decimes, say that 11, one of the decimes
 is conformable in regard to weight, 20 and 21 makes
 two Decimes and says 21, but because 20 & 21 do ~~not~~
 not reckon, ^{and} will add thereto the Key 4 of the letter
 D V I and it makes 25; the 13 says three decimes and
 will ^{will} say 31, and the says 4 decimes and will say 41, the
 15 five and it says 51, the 16 six and ^{will} says 61; the 17 says
 7 and says 71, the 18 says eight decimes and will say 81
 the 19 says ^{nine} 9 decimes and says 94; such precisely are
 the numbers of the Wheel, because such aforesaid
 numbers should always be accompanied with the
 Key 4 or D to denote ^{that} the Wheel contains four

Duplicate numbers and are 7. 23. 36. 95, and seven
 strangers as we have said; ~~one~~ Eleven say one
 Decade; the aforesaid Numbers may besides the
 Decades give the numbers, as may be seen in the
 Table commencing from 12, and say 25 the 13
 35 the 14; 45 the 15; 55 the 16; 65 the 17; 75 the 18;
 85 the 19; 95 ~~but~~ will say 59, these are the first
 Keys of the Science universal.

as 5h. 4th ^{with 1 D. less than be observed the}
^{by E. V} ^{is brought out}

Final
with regard

NB. if an equal Number as example 33 if must be
weighed and then carried to Δ two 33. are equal X^e

To find the Day of the Moon for the first of January 1796

Epact - 20
Month - 0
Day 1
Day of the M 21

Mathematical points are such N^o as produce equal
divisions as 24 makes 6 ^{equal divisions by 4th} ~~see page 9~~ Chapter

Astronomical Points are 3. 5. 7. 9

Sound is understood the N^o which sounds the Value as 21 sounds 24
see the Table of sound

~~Another~~ alphabet for this Admirable Science

| | | | | | | | | | | | | | |
|----|---|----|----|-----------------|----|----|----|------------------|----|-----|----|----|----|
| 1 | A | 4 | 7 | 1 | M | 9 | N | 11 | 29 | 26 | N | 11 | 25 |
| 2 | B | " | " | " | " | 8 | P | 12 | 25 | 26 | N | 12 | 26 |
| 3 | C | " | " | " | " | 4 | D | 13 | 35 | 36 | O | 13 | 8 |
| 4 | D | " | " | " | " | 4 | 2 | 14 | 45 | 46 | P | 14 | 27 |
| 5 | E | " | " | " | " | 22 | R | 15 | 55 | 56 | 2 | 15 | 24 |
| 6 | F | " | " | " | " | 7 | S | 16 | 65 | 66 | R | 16 | 22 |
| 7 | G | " | " | " | " | 3 | T | 17 | 75 | 76 | S | 17 | 23 |
| 8 | H | " | " | " | " | " | " | 18 | 85 | 86 | T | 18 | 24 |
| 9 | I | 5 | 76 | 3 | " | " | " | 19 | 95 | 100 | V | 19 | " |
| 10 | M | 25 | 35 | 45 | 55 | 65 | 75 | 85 | 95 | 50 | I | " | " |
| 11 | N | 26 | 9 | 29 | 39 | 49 | 59 | ⁵² 79 | 89 | 96 | 60 | 7 | " |
| 12 | O | 18 | 19 | 8 | 28 | 38 | 48 | 58 | 68 | 78 | 88 | 89 | 90 |
| 13 | P | 20 | 4 | ³ 30 | 44 | 50 | 60 | 70 | 80 | 90 | 7 | 27 | V |
| 14 | 2 | 21 | 4 | 44 | 54 | 64 | 74 | 84 | 94 | 34 | 40 | 24 | 34 |
| 15 | R | 22 | 4 | 34 | 42 | 52 | 62 | 72 | 82 | 92 | O | 4 | 2 |
| 16 | S | 23 | 7 | 24 | 27 | 67 | 77 | 87 | 97 | 37 | 47 | 76 | " |
| 17 | T | 24 | 3 | 23 | 30 | 37 | 33 | 43 | 53 | 63 | 73 | 83 | 13 |
| 18 | V | 27 | 7 | 28 | 0 | 31 | 41 | 51 | 61 | 71 | 81 | 91 | 19 |
| 19 | Y | 26 | 9 | 26 | 36 | 46 | 56 | 66 | 76 | 86 | 96 | 69 | 34 |

Tafel & *Triangular*. *Lorenz* & *K.*

| | | |
|----|----|----|
| 1 | 23 | 11 |
| 2 | 51 | 16 |
| 3 | 62 | 12 |
| 4 | 1 | 4 |
| 5 | 2 | 3 |
| 6 | 37 | 14 |
| 7 | 9 | 5 |
| 8 | 30 | 8 |
| 9 | 21 | 11 |
| | | |
| | | |
| | | |
| | | |
| | | |
| 10 | 11 | 7 |
| 11 | 13 | 8 |
| 12 | 14 | 12 |
| 13 | 15 | 9 |
| 14 | 19 | 10 |
| 15 | 22 | 10 |
| 16 | 27 | 13 |
| 17 | 74 | 18 |
| 18 | 60 | 9 |

Pole by the above

I

Pole by Jansward

M. 30

21
11

O. 9

21
11

P 37

13

L. 2

14

R. 1

15

S 62

19

60
62

74
60

T 51

V 23

Astronomical Figures

L. T. M. S. N. O.

4. 3 5 . 7 . 9 S

20 Decr met Richon 4.6.8.6 24 Decr met Richon 21

4. 6. 8. 6

7.22.24.26.19.4

27 ²⁸/₂₂ Lunar May 24. 22

Tantum Valet Quantum Sonat

25 · 26 · 19 · 22 · 23 · 24

M. N. 108. R. S. T. D.

5 . 9 . 8 4 . 4 . 4 . 7 . 3

Quingies five times

5 3 2 7 4 6 C T D S R

21. 1. 3. 4. 7. 8. 9

v v T 2 s o N

1 1 24 21 23 19 26

Formula thetractorum et ^{no} finium

hoc aditer Sempiternus

27. 25. 31. 41. 51. 61 71

28. 26 32. 42. 52. 62. 72

an abstract of all the work

see next page for the
Letters

A B C D E F G H I K L M N O P Q R S T V X Y Z et
1. 2. 3. 4. 5. 6. 7. 8. 9. 10. 11. 12. 13. 14. 15. 16. 17. 18. 19. 20. 21. 22. 23. 24.

Disposition of the Alphabet ^{with} regard to Months, as well ^{both} those equal as those unequal with their fixed numbers ^{both} as much to the Value as ~~to the~~ the Day.

Equal Months

Key 9 - January - 26
Key 6 - February - 19
Key 5 - March - 25
Key 4 - April - 22
Key 5 - May - 25
Key 9 - June - 26
Key 7 - September - 23

Unequal Months

| | | |
|-------|--------------|---------|
| Key 9 | - - July | 26 |
| Key 8 | - - August | 18 - 19 |
| Key 8 | - - October | 18 - 19 |
| Key 9 | - - November | 26 |
| Key 4 | - - December | 22 |

As it is said from 2. 3. 4. 5. 6. 7 and 9 as it shall
be done, thus is the way to proceed; if it shall
happen that the numbers come accompanied as
~~the~~^{height} if ^{one} 24 is said 22.; if 34. 32 if one 3. 24
if one 13. 30. 34 and a like one from 4 is reckoned in
its value 22, one 5. 28. 35, in the same manner one
7. 23. 27. if one 8. 19. 28 if one 9. 26. 29. 39 and as such
will proceed according to the Alphabet. Always ~~remember~~
^{note} Should be taken notice of the final numbers, for to take
to find with its value the key that is beneath such number as
far as to number 90, that the Letter N, the vimpler are the
key 3. 4. 5. 7. 8. 9 and those are called numbers according
to the sound, and others comprehended under the aforesaid
as 23. 25. 26. 27. 28. 29 are according to their value which
serve for reckoning and ~~number~~. The 21 and 20 making
40 in our limit 24 V at O. ~~I do not mention this because~~
~~there is no such character in manibus sparsibus Deest~~
In the Letter 2 there is the 21 in the 20, by right there should be the
Letter V; trace ~~it~~ there the P because it has the voice of the letter

Letter V but is said that it ends in the Letter O. ^{makes} 20
of the ~~self~~ same Letter drawn before one number 18
because such are in all those numbers that are under
the 20 I drew 2 20 of P 20 of 2 makes 40, and of P 21
true that does not reckon, but not so the Key D makes
44. in ~~some~~ Every decime has for its end one of the said
Letters of the alphabet besides the Value, as otherwise the
Key in regard to sound.

The Second Book

In the second Treatise for a better understanding we
will go from the Theory to practice ^{which is necessary} for
laying before the Eye of the courteous Reader many
examples, and from whence he will be able to comprehend
by himself what he shoud ~~be~~ to learn of this good
operation, and ~~as~~ ^{as} this may be done more ways
than one (as ^{will} be seen by the examples) the Lover of
this art ~~can~~ ^{may} choose ~~that~~ ^{which} he thinks best for his convenience,
therefore to proceed in order, we will give a beginning
according to the astronomical year in the Month of
march 1732 ^{being} Leap year ~~until~~ to the year 1734 inclusive.

Example 1 ¹⁷³²
~~Number of the Month~~ ^{On the 29th March} and 3rd of Moon 1732
was the Drawing

| | | |
|---------------------|----|----|
| Number of Month | -- | 7 |
| Ditto of points | -- | 2 |
| Ditto of Antecedent | -- | 6 |
| Ditto of Day | -- | 12 |
| Ditto of Moon | -- | 4 |
| Sum | -- | 31 |

If you ^{weigh} the Sum 31 and it weighs 12, if reckoned to the Triangle
~~as it measures~~, 14 if reckoned to the Wheel 14 from 31 and it
gives the first extract 3 to T, where is and makes 24, and is joined
to the weight of 3 to 24; 28 is reckoned one point more to the
one downward, and up to 28 and it gives 62; if you ^{weigh} 28 it will
give 11, if reckon ~~if reckon~~ from 12 ^{upward to} above 11 and it gives
18 and says 10 is added to the Key D that is to say 2 and
if reckoned from 18 gives 41 ^{from 18} taken the weight 41 and 18
and it gives 22, if reckoned 22 from 6 to the Lunar, because

as 5h. 4

AB if ^{weight} 2 ^{will be} the 18 and for each gives 21, if you reckon 18 and each number that ^{adding} ~~21~~ to 6 but if reckoned from 6, 24. ~~21~~ gives 78. Observe 3. 18. 62. 41. 78

To have the ^{5th} number as most proper if ^{you} reckon from 6 as the Anterior number inclusive 24, ^{it} gives 78. ^{for} the ^{5th} number ~~24~~ and this will be general Rule ~~to~~ to have the ^{5th} number ~~24~~ of weight, the number of the day and of the Moon and of the month without the Anterior number, and you will see 12. 4. 7 makes 23. ~~the~~ ^{the} account of 3 should be void 24, therefore ^{it} reckoned from the Anterior number 6, as in our case and gives 78. ^{which should} be reckoned ³¹ to the Triangle ~~24~~ and makes 15 if weighed, gives 9 if weighed from 15 - 9. and give 62.

Example 2nd

On the 12th May. 1732 and ^{18th} of Moon ~~78~~

| | |
|----------------------|----|
| Number of Month | 5 |
| Ditto Day | 8 |
| Ditto Anterior | 5 |
| Ditto Moon | 9 |
| Ditto point | 11 |
| ^{Sum} makes | 38 |

If ^{you} reckon 38 to the Triangle ^{it} gives 51, weighed 38 and gives 12 inclusive to 51 and gives 59; first extract if reckoned 51 downwards to the Lunar ^{it} gives 79; Second extract if reckoned 22 ~~21~~ gives 10, and 4 of day makes 14; if reckoned from 78 downwards to the Solar, ~~it~~ gives 56, the sum 38 and one of point makes 39, if ^{you} reckon 39 from 56 and it gives 20. I find out the 22, that is to say, the second measure was taken and ~~was~~ reckoned the Anterior number 9 inclusive, and it gives 15; observe 59. 79. 56. 20. 15.

See another Method.

Remark ^{this Method}; 5 of Month 8 of Day makes 13, and 9 of Moon makes 22, and 5 of points makes 27 if reckon 28 ^{above} on account of the points and so have 79, ^{is added} the 20 ^{which makes} to 23 ~~that~~ 43, and 9 makes 52 and because the 20 does not reckon ^{by} the 21 is ^{called} the pole, for that is in the middle of the 20 & 22;

and at the beginning of the Triangle; therefore 20 & 21 makes
 41 if reckoned from 10, 12 and above by the Key D
 gives 59, ^{the 13} added the 18 to 20 and makes 38, if reckon
 20 from 59 and gives 13. if reckon 22, ~~and gives 56~~
 to which is added the point for being Leap year.

Example 3rd
 On the 21 June 1782 of Moon 28

| | |
|----------------------------|----|
| Number of the Month | 6 |
| Ditto Day | 11 |
| Ditto Moon Moon | 11 |
| Ditto points | 10 |
| Ditto Anterior | 4 |
| Sum | 42 |

The Measure is not taken as being equal numbers
 but that of the sum 42, and weighs 14 from 42 inclusive
 and give the 10; if find the 7th in the Wheel; because
 42 of sum has 7 inclusive and gives 16 to the
 Solar; if weigh 16 and if ~~take~~ ^{is found} the Key 9, if reckon 16
 16 above and gives 21; if reckon 4 of Key and give
 from 21 downwards to the Lunar 17, reckon the
 sum 42 above and below to the Lunar from 21
 and it gives 86. observe 10. 16. 21. 17. 86.

Method Another manner

If you reckon 5 of points and 6 of ^{the} Month makes 11
 and 4 of Anterior numbers makes 15; if reckon
 to Δ 15 ~~and~~ gives 22, if find at the Wheel 22
 and reckon 8 for the 7 of Month or for the
 anterior Number 7 and 5 of points makes
 8, and for such if reckoned 8 and give 53. 57.
 and if ¹⁰ points makes 63; if of 23 and 4 of
 Key gives 17. and 27 makes 44 of the 86, because
 the sum exceeds the reckoning, the number
 77 exclusive, in such a case is void. 53

is said
 Thus if returned to the first number and gives
 21 ^{which} with 53 makes 74, ^{which is added} to 22 that is ^{just} 96
 to Δ gives 96, and from that ~~passed from num~~
~~ber~~ if reckon from 18 on account of the 9 & 6
 6 gives 16 telling 3 because the 6 weighs 3
~~on account~~ before of the 53 and of the ante-
 -ior number as ~~it is~~ more proper.

Example 1th
 On the 22 July 1732 ^{82nd} of Moon ~~22~~

| | |
|---------------------|-----------|
| Number of the Month | 6 |
| Ditto Day | 14 |
| Ditto — D | 3 |
| Sum | <u>23</u> |

The Sum gives to Δ 2 and 2 of \mathcal{D} and ^{the} Lunar ^{which} ~~is~~ growing number, of an weigh
 14 and it ^{make} weighs 12, and the 3 of ^{the} Moon makes
 15, if reckon to Δ and if have 22, ^{you} weigh
 the 20 and it gives the Key 9; otherwise ^{the weight}
 because 7 and 3 of the \mathcal{D} makes 73. ^{which} ~~is added~~
 to 22 the Key 9 and makes 31 and gives 48;
 if 43 from 23 and gives 67 ^{is added} 23 to 67
 and the 14 of Day and the Key 9 and it makes
 56, that gives the 4 is 56, ~~the 21 of 4~~, because
 to 21 there is the Key 2. ~~Just 1~~, and gives 77
 if ^{you} reckon the Key 4 to ~~the~~ downwards to the
 Lunar gives 86, if ^{you} use the value of M 25
 on account of the number 26 observe 24
 67. 4. 77. 88.

Example 5th
 On the 30th August 1732 ^{89th} of Moon 9.

30 August 1732 D 9

| | | |
|----------|-------|-----------|
| Number - | Month | 8 |
| Ditto - | Day | 8 |
| Ditto - | D | 5 |
| Ditto - | Point | 5 |
| Sum | | <u>26</u> |

This Sum is equal and ~~the~~ growing number but if you go to the Lunar ^{weight} ~~weight~~ ^{and weight} 13. if ^{the half} ~~weight~~ of Δ is said 8, 8 & 8 makes 16 because 8 of the Month and 8 of 30 if reckon ~~then~~ to 16 8 of points and gives 65; if reckon 65 and gives 67, if reckon 23 ~~account~~ the 7 and 5 of points and gives 14; if reckon 31 because ~~is taken~~ the 3 ^{first} ~~of the~~ 24 and 30 of 7 ~~of~~ 14, 15 and ~~6~~ ^{first} and give 80 if reckon 22 and 23 from 55, and ~~from~~ because ~~5~~ makes 7 with the 5 makes 56 and gives 11. Observe 65. 67. 14. 80. 11

The Number of Month was 8 and 5 of Moon and ~~of the~~ 9 makes 13 to Δ , and gives 15 if reckon ^{from} 16, 5 of points and will add one on account of points as is already said above and this is a general rule in regard of the points and numbers 31. 7. 9 with joining always one.

Example 6th the 6 October 1732 ^{17 of the Moon} ~~17~~
 Number of the Month 7
 Ditto Day 3
 Ditto D 11
 Ditto point 2
 Sum 23

By going to the Lunar, ^{CT:3} growing number and if
 reckon ²⁹ to the Solar 8, and have 7, if reckon
 from ⁴⁷ 23. ²³ because 23 and 23 makes 46 and 1
 that is joined makes 47, if reckon from ¹⁷ 23. ²³
 and if ^{it makes} 43 observe if reckon 7 of Month first
 and afterwards if weigh 43 and it ^{will be} 15, is added
 3 of Day of the Month ^{is added} and makes 18 if reckon from
 43 18 above to the Solar and gives 61 if reckon
^{again} 18 from 61 downwards to the Lunar
 and gives 89. if ^{again} reckon 18 from 89
 on account of the 3 and ³³ thirty three and 40
 and gives 68 observe 7 - 43 - 61 - 89 68

Example 7th ^{X 27 of Moon}
 On the 15 Nov. 1732 ³³

| | |
|---------------------|----|
| Number of the Month | 8 |
| Ditto Day | 9 |
| Ditto Moon | 13 |
| Ditto Point | 3 |
| Sum | 33 |

The 33 is a duplicate number and the sum equal
 and gives of Δ 3 Part of points 27, because
 it ^{there were} had more day of Δ than of drawing and give
 of moon 13, the points will give 4 that 13
 and 4 makes 17 to Δ , gives 74 if reckon
 17 from 76 downwards to the Solar and give
 56, is done thus observe well if ^{you} go over
 two points, because 74 ^{is} 75 that is to say
 4 of the 74 and 1 of the 75 both as well the 4
 as the 1 weighing, it ^{makes} 7 but is done
 thus in each sometimes it will be found
 the number equal, ^{will be found} in 4 points will suffer

Have ^{ex} ^{ception} ^{of} ^{you} ³⁵
 This ^{ex} ^{ception} ^{will} ^{reckon} after the days
 in the same manner as if alike; if reckoned
 from Number next to 16. 15 which are the
 days of the drawing and ^{it gives} 20; after if you
 reckon ^{the} ~~the~~ Number ^{of} ~~points~~ ^{points} from the next
 Number 22 as alike, it ^{passes over} ~~gives~~ two points;
~~again will be reckoned~~ but if reckon
 from 25. 14 ^{it gives} 15; if reckon 27
 of the Day of the D from first extract ^{up} ~~5~~ 16
 above to the Lunas and give for fourth
 extract 88; if ^{you} ~~reckon~~ ^{again} ~~from~~ ^{from} third
 extract, that was 45, the value of the 15
 that ^{will be} ~~reckon~~ 9 downwards to the Solar
 and gives for fifth extract the 18.
 observe 56. 20. 45. 88. 18

Example 8 ~~15 Dec. 1732 of D 28~~
 15 Dec. 1732 of D 28

10
The first of the month of
January 1800 I arrived at
the place of my destination
and found the weather very
warm and the people very
friendly. I was informed
that the country was very
fertile and the people very
industrious. I was also
informed that the people
were very fond of the
English language and
the English way of life.
I was also informed that
the people were very
fond of the English
language and the English
way of life.

11
The second of the month of
January 1800 I arrived at
the place of my destination
and found the weather very
warm and the people very
friendly. I was informed
that the country was very
fertile and the people very
industrious. I was also
informed that the people
were very fond of the
English language and
the English way of life.
I was also informed that
the people were very
fond of the English
language and the English
way of life.

Example 8th On the Dec 15th 1732 ^{15th} of Moon ~~20~~

N^o Month 8
 Little Day 9
 Moon 11
 Point 4

Sum 32

Three and three and 9 of Eight ¹⁵ gives 9 if I add to the
~~sum~~ 8 of Month and makes 17 the first number 3, and
 on account of points that ~~is given~~ ^{is given} with Nine give to
 understand that takes away 3; reckon six if well
 go with the aforesaid Sum to three and gave 19, if
 reckon by such from 9, that is to say, from weight
 that will give the Days of the Drawing and the sum
^{which} that gave the said N^o 9 reckon with the aforesaid
 Month that was 17, and gives 34, if ^{you} reckon 4 and
 afterwards 24 on account of the Key ^{it} makes 28;
 if ^{you} reckon 87 and not from 88 because ^{they} are equal
 and gave downwards to the Solar 69; if ^{you} reckon ^{again}
 the Days of the Moon, that is to say 28 and 28 makes
 56; if reckon from 69. 56 downwards to the Solar and
 gives 2; if ^{you} reckon nineteen Lunar Key, for there
 should be the number 8 much more 19. And if
 reckoned from 2. 15 and is said 86 if reckoned
 from 18. 19 and so have 8; if reckoned 18 from 23,
 for that 19 and 4 makes 23 and gives 6 for if weight
 and reckon from 23. 15 ~~and~~ gave 60, but because
 on 60 there is a stranger number 5 if reckoned from
 60. 23 and not 15 above to the Lunar ~~it~~ gives 4 6
 of serve 34. 69. 2. 86. 4 6.

On the 14th of January 1733 ^{Example 9th} ~~of the Moon~~ ¹⁷³³ ~~of the Moon~~

Number Solar 12
 D. No of Month 9
 D. Moon 9
 D. anterior 3
 D. Point 4

37 without considering

Here because the sum is made ~~with~~ ^{not} if considered
 the last letter with weight, that is to say, square CN
 T. A amounts to 26, the T makes Value 24, Key 5 there
 fore is said 3 and 6 makes 36 and one makes 37 if reckon
 the same to Δ , and give 1 if reckon ~~from~~ ^{from} 1 above
 to the sumas 28 and so have 56; if reckon 5 of anterior
 numbers and give downwards to the Solar 34; if weigh
 34 ~~and~~ ^{you} gives 15; if weigh the 6 and give 18; if weigh 56
 and makes 27; if reckon the 26 downwards and give 11
 of weights and give 7; if reckon from 11 26 by the letter
 N and give 6. observe 56. 34. 18. 11. 6.

Example 10th
 On the 5th February 1733 ⁸²⁸ of the Moon according
 to the Exact.

N^o of Month 10
 N^o of Point 4
 D. anterior 5
 N^o Days of Month 7
 N^o of Moon 7

The Number of the Δ makes 33 and because the N^o is Equal
 and Doublet. inclusive, if reckoned from thence
 downwards and above to the Solar and gives the sum 33. that
 makes 49; if weigh 49 it gives 16 ~~is joined~~ the anterior
 number 9 ~~and~~ ^{is joined} makes 25; if reckon from 18 26 ~~it~~
 gives 12 ~~is joined~~ ~~to~~ 12 and makes 61; if ~~downwards~~
 if 5 the anterior ~~and~~ ^{is joined} makes 16; if reckon from 61 16
 and give 45; if weigh 45 and give 18; if weigh 18
 if weigh 18 and give 9; if reckon from 18 inclusive and
 observe 49. 12. 28. 45. 16.

If you reckon 20 of Moon and 10 of Month it makes 30, but because 20 does not reckon ^{it is called} ~~re~~ 2 and gives the D, that is to say, 4 of Key, Lunar, 8 of 30 and 4 makes 34. 3 says 4 but makes 35 and 4 makes 39; if begin to reckon from 36 on account of points, because from 9 is taken away 3 points as always has been said, from 36 ^{go upwards} ~~above~~ ^{it} gives 39; ~~number~~ reckon 49 from 48; if ^{you} reckon again 26 downwards ^{it} gives 12; if ^{you} reckon 30. 3 and 4 because the 4 and the second Key of 3, that makes 20 and if ^{you} reckon from 12 ^{it} gives for last 45. observe the difference.

Example 11th
On the 21 March 1733 ^{86th of Moon} ~~of Moon 6~~

N^o Month 7
N^o anterior 6
D^o Point 2
D^o Day 11
D^o Moon 3

Sum 29

The Number of Δ gives 13; if reckoned downwards of the $\frac{65}{35}$ as unequal and gives 29 of the sum; the 2 becomes the second was reckoned from 23 to the Solar of 3, then in 2 there is one 3 ^{stranger} but begin from 3 and reckon 24 on account of points and ^{there will be} 60 for the 3. Observe that in 60 there is one 5 ^{stranger}, where on account of points ^{is} void 5 and 1 makes 6; if ^{you} reckon 6 from 50 downwards to the Solar and have ^{the} 44 ^{the 2.} joined ~~the~~ according to sound that is to say, the weight 44 makes 4 and 3. 44 therefore for having the fifth Number is joined to 6. 21 by the Letter O for the value of 2 4 and gives downwards the 7. ^{the} 50 ^{goes} to the Lunar to find the 23 and if ^{you} reckon ^{above} to the Solar on account of the points ^{there will be} 4. observe 2. 60. 21. 7. 4

Another way

If you reckon the weight of Day and says 11 and 2 of points
 so have to the wheel 12 is said 62 because the Moon 11
 and 2 of points makes 62, and join likewise the 12 with 62
 will make 74, if you reckon from 62. 74 downwards to the
 Solar and gives 7 if add 7 to 74 makes 81 because if
~~weigh the~~ if reckon from 7. 81 the day is that says
 R 21 and gave 41 ~~is joined~~ 74 to 41 and gave 15 if
 joined to 15. 2 of points and makes 70 if reckon from
 41 and gave 62 if ~~rethore~~ and add to 74. 2 makes 76
 if reckon 23 from 2 and gave 60 reckon 4 from 2 inclusive
 by the 4 and gave 4 which seems more proper.

Example 12th

On 4th May 1733, of Moon 21

No Month 5
 Day 7
 Point 11
 anterior 5
 Moon 11

39

The Number to Δ makes 62; instead of reckoning
 39 must reckon 36. observe well on account of points
 mathematical ^{points} with 9 that page for the decimed, but is
 reckoned 36 from 62 downwards to the Solar and
 is come into the Lunar and gives 88 for ^{the} first; for the
 Second again reckon above 25 in exchange for 26,
 because 9 amounts to 26, ~~for because~~ if you
 one time ~~by~~ ^{the} 6, but again if you reckon 25 from 88
 inclusive and gives 59; if you weigh 9 from 59 and makes 50
 inclusive; 50 downwards to the Solar and gives 4 in there
 is the Stranger Number, but if you reckon from unity
 of the Solar above to the Lunar or 24 by the 3, that
 is to say, 30. 39, if the Sum and 1 that is joined to Stranger
 that makes 25 and gives 82 on 82, there is 8 Strangers; if
 you weigh 8 and says 4, if you reckon from 82. 4 and gave 76.
 observe 88. 59. 4. 82. 71 *
 Could still be made the Number 4 that is weighed by
 the 8 and if it ~~weighs~~ will go to 4 and reckon 33 because
 30 is taken of the sum and if ^{you} weigh the 2 of the 32

On the 16 June 1733 ⁸⁴⁹ Moore

Number Month 6
D^r anterior 3
El Point 10
El Day 8.
El Moon 7

34

If the Number that was had to Δ was 27 is
reckoned 28 on account of points, ~~from 28~~
~~observe well if reckoned 28 on account of points~~
~~from 28~~ observe well if reckoned downwards
23 and if it makes the reverse and gives 8; if
you reckon from 8 inclusive the anterior
Number 24 by the 3^d T ~~and~~ gives 85; after
wards if I name the Sum 34 from 77 above to
the Solar the 34 gives the 43; ~~from 43 above and~~
~~bottom~~ reckoning from 34 gives the 52, from
52 downwards; the 34 gives 36. observe
8. 85. 52. 43. 56.

~~Method~~ another Method.

If you have 9 ~~if~~ if reckon the ⁴Seven of the Moon
with the 4 ~~with~~ 8. 9. 10 ~~numbers~~ makes 46;
if you reckon 8 of days and of the Key and give by
the Lunar 31, ~~add~~ add the weight of the Key 4 and
it makes 35, ~~if you~~ but give the reverse
if you reckon from 31-36, ~~and~~ ^{and} give 52 if reckon
the 52, ~~and~~ give 8 if ^{you} reckon 8 and give 85.
34 of the first Sum and give 85 and ~~and~~ 43
observe 52. 8. 85. 43.

Another way

As 14 Example 8 7 of the Moon
On the 31 January 1734

Number of Month 9

1st Point 1

2nd anterior 4

3rd Day 12

4th Moon 6

If you go to Δ with the sum 22 have 19 because

one of point 8 of Month makes 19; it is not said
9 of Month and one of point makes 10. if called
for weight the 10 and ~~answers~~ 5 if you one
Day of Month 31 ~~and~~ answers 12 T 24; after
wards the Moon 7 and 5 ~~and~~ answers 6. 28

answers 24; afterwards if reckoned 5 of the Day
M on account the 5 the sum says 25, and 5 of
1 makes 6 and gives 30; if you find 30 of the Wheel

when the sum is of A. Note the measure
is not ~~taken~~ and therefore of the Note is reckoned

5 of points and gives 40; the 5 says 45
if you reckon 45 from 40 inclusive above to the

Polar and give 67 if you reckon 48, because 45

and 3 of points make 48; if you reckon from 68

it gives 36; if you reckon 67, but because says

68 from 36 inclusive and gave 87 if you reckon

31 of the Month and gives 12; if you reckon 36 and

gives 37 observe 40. 67 36. 87. 37.

is taken 14 of the sum and if you weigh the 2 of the 82

15 Examples ⁴³
 Feb 8th February 1784 Moon 8

N^o of Month - 10

Anterior 5

Point 4

Moon 4

Day 4

27

In this Month 9 of Number anterior and 8 of Day
 and 3 of Moon makes 20 ^{it is not} ~~is not~~ reckoned that the
~~Number is not taking of~~ Δ because it is an
 equal Number; if go to find out ~~of~~ the Lunar
 27 is reckoned 28 on account of the Mathematical 3
 points, from 23 by the Key 7, if reckon downwards
 and above to the Solar and gives 60; there is a
 Stranger N^o 5 and if ^{you} reckon ~~of~~ ^{again} above to the
 Solar and gives 35 by the 30. and if ^{you} reckon 24 of T
 3 of 35 downwards and gives 9; if reckon again the 40
 from 7 downwards makes 37 and gives 38 by the 50
 from 40 downwards and above to the Lunar; if reckon
 24 and gives 33 observe 50. 35. 9. 38. 33.

another ^{Method} ~~Method~~

One of Day and 3 and if the sum should give 21 that
 is to 4 and by such 21; and because 20 & 21 do
 not reckon, is viginti 2 and is ^{called} 2 of Key, that is to
 say 2 of T, 2 of T, 2 of Day 23 of Moon makes 7 and gives
 to Δ 9, add to the 9 - 8 and it makes 10 and 2 of points
 makes 12; if ^{you} reckon from 10 inclusive to 12 and gives
 38. 12 above to the Solar gave 35; if ^{you} reckon 36 from
 35 and gives to the Lunar 28 and here ~~for~~ having
 the 28, if ^{you} reckon 32 ~~from~~ from 33 by the 7,
 the 28 above to the Solar and gives 60, because the
 60 has the Stranger 5; if ^{you} reckon 40 with 5 if and from
 5 if reckon 4 ~~it~~ gives 9; if ^{you} reckon 44
 join the 12 of points ^{will} that makes 17 and reck
 on 17 from 47 and gives 9, observe it, 10 proce
 ss of simple Numbers and for such will give the vers

Another way

16 Example
On the 8th March 1734 Moon ~~17~~

N^o Month 7
D^o Day 1
D^o Moon 7
D^o Anterior 6
D^o Point 2
Sum 26

If you have 9 ~~weigh~~ weigh the 1st of the Moon & reckon it to Δ , but if have 9 and for that telling 2 of points will make 10, then and the N^o 9 and the 7th Not is always taken away, therefore says in our case 19, if you weigh 19 and gives 10; if reckon from 10 by the Day 9 it will give 19; if after weigh 14 and gives 15; if weigh 16 in exchange of 17 on account of the Mathematical point of 15 it gives 90 this is added 2 of points behind and say 90 & 2 points above to the Lunar 26, if added to 26 other 2 points it makes the Sum 28; if you reckon from 27. 28 above it gives 61. observe 14 45 90. 26 61.

17 Example
On the 10th April 1734 Moon ~~18~~

N^o Month 7
D^o Day 2
D^o Moon 6
D^o Anterior 3
D^o Point 10
Sum 31

By April reckon 7 of Month 9 and 10 of Day and 7 of Moon makes 11; if you have 14, if reckon 23 of the 7 of 11 it gives 53; if reckon 53 by the 9 and gives 22; the 7 says 29 is said by the 9. 26 but if reckoned from 28, the 26 downwards and above to the Lunar it gives 28 observe 14 53. 22. 38. 28

When 14 of the sum and if after weigh the 2 of the 88

18th Example

On the 20th of May 1734 ^{18th day of the} Moon ~~1734~~

N^o Month 5
 Do Day - 7
 Do Moon 9
 Do Anterior 5
 Do Points 11

Sum 37

If you have at Δ the 22 of ^{the} sum, not so much of Month as of Days alike of the Month as of the Moon if therefore you reckon from 1 to the Solar above the L^y of Key of the 22 that makes 8 and so have 8; if you reckon 28 ^{from} 8 above and so have 18; ^{to 20} added to the 20 ^{which makes} 15 and so have 43; if you reckon 43 downwards to the Solar and above to the Lunar and give 37, the 37 is joined to the 20 of Days of Month ^{which} makes 57; if you reckon 58 from 57 inclusive above to the Lunar and go into the Solar and give 32; ^{to 32} added the 58 ^{so} with 32 makes the sum 90; if called 9 and answered 5 it gives 62, Observe 8. 15. 37. 32. 62.

19th Example

On the 3rd Sep^r 1734 ^{19th day of the} Moon ~~1734~~

N^o of Month 9
 Do Day 8
 Do Moon 3
 Do Point 1

Sum 21

If you have 9 of Month and 8, say 30 and 19 of Lunar Key and so have 30 and 30 of Moon and 22 to Δ , if you reckon from 22 above to the Solar it gives 9; 68; if reckon 19 from 16 downwards and so have 43 and reckon 19 from 43 and so have 61 to the above, is reckoned from 61; say 89 if reckon 19 from 89 and give 7, observe well ^{the manner} 68. 43. 61. 89. 7. If say 22 to Δ for that if

reckoned 23 of the sun, ~~XX~~ ~~XXIX~~ three times 19 by
the 3 of 30 and 19 of Lunar Key by the Number of the
Month that makes 80; but because follows a Not
19. 8. 8. but reckon 3 times 19, ~~XXX~~ because ^{regarded}
the 4 to the fourth decime, observe and note ~~that~~
the whole consists in knowing and understanding
the Lunar Key, that is to say, the Alphabet ^{which} ~~is~~
^{is} the spelling the words) laid down in its place
and as certain Numbers 3. 5. 7. 9 ~~are~~ have
one ~~and~~ union and ^{these little pieces} ~~and~~ ~~that~~ ~~the~~
~~that~~ ~~if~~ ^{you} call and ~~it~~ ~~is~~ ~~the~~ (that is the
weight) and so join together ^{as to} ~~as~~ ~~is~~ ~~the~~ ~~end~~
sist of 5 ^{which} is said 6 by the 26 and 5 verses
of Key if it is the 7, it is then said to be 8
and 28 and the seven verses of Key; but
to know this ~~is~~ ~~the~~ ~~key~~ ^{remember} the Key should be
observed first, and from 23 where is the 7 of
Key, if it is a ~~7~~ it is said 26 and the 9 verses
for Key; if it is an 8 - 18 and the Key is 19; if
after succeeds 20. 21 for ~~that~~ ^{it} is said does
not reckon, therefore in this case is not
made the Key but A D and 2 and ^{for 2} ~~is~~
observed ~~that~~ ~~that~~ that answers to the antecedent
and following as is seen in the proper Alphabet;
you have therefore wisdom, work according to
art, if you have ^{a lesson} ~~an~~ ~~interest~~ I say, if you have
an ~~interest~~ ^{inclination}

another way to do these operations

It should be observed on paper, not so much the
Month as the day of the drawing and ~~the~~ day of the
Moon; If the Moon ^{is} to the reverse of points and
of the anterior Number, but in the latter way
of the sun and if ^{after} weigh the 2 of the 82

and so on will give to each Letter its Number
of the alphabet and thereby is made the sum, and
the same will go to Δ ^{in order to find} ~~the~~ the Pole, observe
how many days the Moon has, if it has more days
than the ^{first} days of the drawing, in such a case should
be reckoned the ~~same~~ ^{from} ~~from~~ Number of Δ which
was given and always inclusive and, if it has ~~less~~
fewer days than those of the drawing, then will reckon so
much of the same day of the drawing; if ever it
should happen ^{that} the said sum in the ^{on} ~~more~~ ^{figure} 155.
133-188 then is taken the Pole according to custom; at
~~the~~ ~~mis~~ ~~er~~ ~~th~~ ~~is~~ ~~le ~~ss~~ afterwards weigh how
many Numbers have the weight ~~of~~ 188 give to
 Δ the 30; if ^{you} weigh 188 give 20, if ^{you} prove then to the
Wheel 30 and ~~if~~ reckon from 30 ^{twenty} ~~in~~ weight
of 188; if you have been ^{properly} ~~with~~ ^{it} ~~attention~~ will
succeed in the sketch wanted to ~~investigate~~ ^{to investigate}~~

Example 20th ^{& the 17th}
On the 21st January 1745 ^{of the year} ~~the~~ according
to the Δ

| | | |
|----------------|-----------|---------------|
| Number | Month | 9 |
| 2 ^o | Solar | 11 |
| 3 ^o | Lunar | 11 |
| 2 ^o | antérieur | 4 |
| 3 ^o | Points | 1 |
| | | <u>Sum 36</u> |

If ^{you} reckon the same to Δ give 60 at the said Number
there is the stranger 5; but if ^{you} reckon from 15 down
ward ^{give} to the Solar, and if reckon to the Lunar
and give 27; from 27 if ^{you} reckon 28 above and give
61-; 27 and 3 of Number antérieur makes
30; if ^{you} reckon 28. 30 and so have 59; if ^{you} reckon
from 26 on account of the Key Δ 24 and give 15
if reckon 26. 36 of the Sum and so have 69. observe
27. 61. 59. 15. 89.

Another way

21. Example

On the ^{11th} March 1745, ^{8th of the} Moon ~~at~~

Numer Month 7

2^d. Solar 7

3^d. Lunar 4

2^d. Anterior 6

2^d. Point 4

If you go to Δ and ~~you~~ have 11 ^{Sum 28} reckon 28 of the Sum and have the 3; from 3 if you reckon 24 and the Key T and ~~you~~ have 78; if T reckon 18 and so have 49 if reckon from 49 — 26 of Key, Lunar and downwards and so have 84; from 84 if you reckon 22 ^{you} have 8. observe 3. 78. 49. 84. 8

To the reverse; if one of the remaines had been false ~~for~~ that would not come out ^{the} for void motive of two sextiles, and therefore in such a case the number is worked in course ~~the~~ ^{the} that will come out & will be 6. 42. 66. 71. 87.

22. Example

On the ^{29th} April 1745, ^{8th of the} Moon according to the Epact ~~at~~

N^o Month 7

2^d. Solar 12

3^d. Lunar 13

2^d. Anterior 3

2^d. Point 10

Sum 45

If you go to Δ and ~~you~~ have ^{the} 45 ^{Pole 24} reckon 18 the weight of the 45 and gave 39; if you reckon from 39 the 12 of day 12 and so have 10; if you reckon from 10 inclusive ~~the~~ and gave 29; if you reckon from 29 ^{the} 4

from 29 of the sum and if ^{you} weigh the 2 of the 87

that says 3 and makes 33; if ^{you} reckon from 7 above
to the Lunar 33 ~~and~~ gives 71.

Another ~~method~~ ^{ethod.}

If ^{you} have 21 of Moon and 5 of Month, say if ~~have~~ ^{that is high} of
9 of Number anterior and 5 makes 14, ^{is reckoned}
15 ⁱⁿ of Δ on account of points; that 5 and 9 makes
14, with 5 and 9 ~~and~~ gives 22 and 14 makes 39 and
because there was 21 of Moon and both ~~was~~ equal,
the pole was begun to be reckoned downwards
according to art of 22.38 and gave for first extract
14, ^{which} ~~is added to 36~~ ^{is added to} 36 and makes 50 and reckon from
7. 40 and gave 59; ³⁶ is added to 59 and gave
Sum 85, because ³⁰ was ^{at} reckoned ~~30~~ only and
the weight of 9 the final Number of 50 that
makes 9 beginning from 59. 85, gave 82; ^{to 82} is added
~~to 82~~ the 22 on account of the 22 if reckon 4
from ~~the 82~~ from the Day D and gives 71, ^{which} is the
7 of Day of Month that is the weight of the Day of
Drawing and gives the Sum 78; if ^{you} reckon 78
from 71 ~~it~~ gives 88 by turn of reckoning
that is to say, downward to the Lunar and
above to the Solar with returning ^{again} to
the Lunar. observe 4. 59. 82. 71. 88.

Example 13th

Another ^{method} way

Schitt

۷۵۳

o
i
v
.
v
.

1874

30

1

八

—

it.

it is

28A

100

179 of the urine and if ^{it} after weigh the 2 of the 82

of the anterior Number makes 13 and so have
 20; if you reckon to Δ 20 and gave 51; if you reckon
 51 the 2 of Key ^{its size} and have 54 observe 39.10.49.20.54

23 Example

On the 3rd June 1745 ^{at 3rd of} Moon Δ

No Month 6
 2^o Day 4
 3^o Moon 4
 4^o Anterior 4
 Pointy 10
 sum 28

If you reckon to Δ the sum 28 you have 11 for
 measure; if you reckon downwards ^{from} 28 ^{you} have
 90; if you reckon from 90 above to the Lunar
 on account of R. O and the anterior No 3 ^{it}
~~makes~~ 80; if you reckon from 80 the 26 of Lunar
 Key downwards to the Solar ~~and~~ ^{you} have
 73; Key 24, and if you go to 24 above and ~~it~~
 reckon 23 by the ^{it} gives 13. if you reckon by
 65 downwards ^{it makes} 4 from 7 ~~so~~ 63, but
 because 63 has a Number 53 & stranger; if
 you reckon ~~by~~ downwards from 52. ~~11~~ 19 by the
 Lunar 11 and so ~~gets~~ 65. observe 90. 80
 73. 13. 65

24 Example

On the 15th July 1745 ^{at 16th of} Moon Δ

No Month 6
 2^o Day 9
 3^o 8

^{it makes} 24; if you reckon to Δ the sum 24 you will have 37; ~~find~~ ^{you} find to the
 Lunar 37 if you reckon 24, ^{you} have for first 56 ten inches
 — since and 5 of 2 Lunar above and so have 58; if you reckon
 7 of ^{months} ~~of~~ Key and so have 11; if you reckon 26 inches
 it ~~and~~ ^{it makes} 48; if you reckon 22 from 48 inclusive ~~and~~ ^{it}
 gives to the Lunar 75. observe 36. 38. 11. 48. 75

Another way

25 Example

Ante 12 August 1745 ⁸¹⁴ Moon XX

N^o Month 8

S^r Solar 8

L^r Lunar 12

P^r Point 5

Sum 33

If you reckon to Δ the sum 33 you will have 22; if
you reckon 22 from weight inclusive; if tick on the Key
4 of D ~~XX~~ backwards ^{you} have 18; if ^{again} tick on ~~New~~ ^{the} ~~Key~~ ^{Key}
on account of points to the Solar ~~and~~ you have 20;
if you reckon from 22 to 24 above ~~and~~ ^{you give to the} ~~which~~
Lunar 80, because there is ~~XX~~ 14. 18. 20 makes
the Sum 52; but if you reckon 24 on account of the
Key D of 2; if ~~you~~ ^{if you} ~~reckon to~~ ^{reckon} ~~the~~ ¹⁰ backwards to the Solar
~~from~~ 73 inclusive ~~of the Lunar Key~~
8. 18. 19 ^{you} ~~and~~ ^{have} 50. observe 14. 18. 20. 80
50

Example 26

Ante 23 Sep 1745 ⁸²⁶ of the Moon ~~XX~~

N^o Month 9

Solar 11

Day

Lunar 10

Point 1

Sum 31

If you reckon from Δ the ~~Maximum~~ or weight of the sum
31 ~~you~~ ^{you} have 15; if ^{you} ~~you~~ ³¹ reckon above to the Solar ~~and~~
~~and~~ ^{you} have 70, first ^{if} ~~if~~ ^{has} 24 by the Letter T from
30 downwards to the Solar from N^o 14 and so have
24; if ^{you} ~~you~~ ²⁴ reckon 24 from 70 by the Lunar ~~and~~ 23 so have
downwards to the Solar 22 inclusive. the 9 of Key Lunar
24 by the Letter T of 3 from ~~stranger~~ ^{you} ~~and~~ ^{have} 78
~~which~~ ^{It also} ~~shall~~ be made thus, instead of reckoning
3. 1. 11 for such Numbers reckon the wheel from
the ~~XX~~ of the sum and if after weigh the 2 of the 82

16. and will ^{count} ~~reach~~ 30 and you will have 70
 for one life, ^{as} ~~at~~ this Month ^{year} 2 Mathem
 atic points and makes one Number, for the
 20 could be done from ~~the~~ the drawing, the value
 of the Letter M, the fifth Decime and will
 reckon from the said Number 15. 25 and will
 go to the 24. observe 70. 24. 22. 3. 78 for the
 first reckoning downwards to the Lunar and so
^{gives} ~~has~~ 70.

27 Example

On the 6th Nov 1745 ^{811 of} Moon according ~~part~~

N^o Month 8

2^d Day 3

2^d Moon 7

2^d Point 3

Ann 21

Here the year does not reckon, but if ^{you} give 8 of
 Month, and 4 of Key, it makes 12, ^{which} is reckoned to Δ and
 so ^{gives} 14; if ^{you} reckon 8 for 15, ^{you} have 20; if ^{you} reckon
 23 by the 7 of the Moon downwards to the Lunar and
 above to the Solar ^{you} have 4; if ^{you} reckon backwards
 because here is a stranger Number to 4; if ^{you} reckon
 from 17 above to the Solar by the way the 4 was given
 by that in return backwards, but is reckoned 27 by
 the 7 of Moon in the Lunar so ^{gives} above to the
 Solar 10 from 70 to the Letter S; if ^{you} reckon 23 the
 Value of the Letter to the Lunar from 23 and is said
 24 by the T ^{from} the above to the Solar, ^{it makes} 42,
 and ^{as} because in the 42 there is a stranger 7 but if
 you go to the 7 and ^{you} reckon downwards against the Number
 8 to the Solar, the Number 3 of points ^{you} have 9.
 observe 20. 24. 4. 10. 9. c.

This could be made still thus by the Key of Letter S
 to the Δ ; will reckon 18 and so ^{you} have 60, there is a
 Stranger Number and that is 5, but if ^{you} reckon

the Key Δ , of 21 of the Sun and we have Δ , because in
 Δ there is a Stranger N^o 1; but if going to Δ with
 if you reckon 7 of the Moon and we have Δ , if you
 to the Lunar and if reckon from 7-25 we have 9 to the
 Letter N; there is the Value of N^o 26 and Δ of 3 makes
 30; if you reckon from 30 above to the Solar and we have 20

28 Example
 On the 9th December 1745 Moon Δ
 N^o Month 8
 D^y Day 1
 D^y Moon 9
 D^y Point Δ
 Sum 26

If you reckon the Sun to Δ and we have 30, which Number
 answer to 8; if you reckon from 9 the Value of the Letter
 D, that is to say, 22 Δ downwards to the Solar and
 you have 8 Δ ; from 8 because Δ of Key makes
 7; if you reckon 3 from 37 and Δ of Key makes 34
 and we have 52; from 52 if you reckon 15 it makes
 68; 68 says 6 Δ if you reckon 26 downwards to the
 Solar and we have 16; 16 void 15 and answer 65;
 from 17 was reckoned 65 to the above of the Solar
 and downwards of the Lunar and we have 9. because
 8 Δ 52 68 16 9

Note ~~well~~ those examples are made with
 this rule for to denote much difficulty ^{in order} for
 to be understood by those that know it for
 nothing less should be willing to make; thus
 to the end it may prevail. This read at your
 pleasure.

Example 29

examples which the author of this
Explanation of this Science has proposed

On the second of June 1745 2^d of Moon according to Epact

~~8 - 1745~~

N^o Month 6

D^y Day 3

D^y Moon 3

D^y Points 10

D^y anterior 4

Sum 26

The following Numbers come out 27. 37. 70. 80
and 90 These are the Keys V. T. S. O. N. (which
are the Decies) In regard of Value, let us note the
Explanation of the Month of July and afterwards we
shall pass the Theory. But first let us
lay out in order such numbers already drawn
in the Month of June in the equal 26 as
above; always those final Numbers, take the
sum the Letter already drawn out, as here
under see the figure and with this you may
regulate for the future drawing, as such is
discerned in the original of this Science.

| | | | |
|----|----|----|-------|
| 27 | V. | 23 | value |
| 37 | T. | 24 | |
| 70 | S. | 23 | |
| 80 | O. | 19 | |
| 90 | N. | 26 | |

Example 30th

Explanation of the Month July 27, 1745 10 of the Moon

N^o Month 6

D^y Day 13

D^y Moon 5

Sum 24

July according to the Letter I and 9 of Key, but according
to the Value, 6 without the points, that the said Month has

another way

on July 27th of Moon, according to the Part 10,
N^o Month 6, N^o Day 18, ^{or} the Moon 5, ^{which} makes
the ~~sum~~ 26; the sum is 26 but because it is
an unequal Month ~~add 1~~, ^{is added} makes 26;
but in the equal Month, 26th Value of the Letter
N; the Strolling Letter N 26 and 9 of Key in Δ
says 27, that is to say, the days of the ^{same} Month in
which ~~it is~~ the drawing, that is, the Number
~~is not~~ ^{which} regards the sound but ^{as to} weight
23 of the Moon ~~is~~ as to the sound, but ~~as to~~ weight
5, that is weighing the γ not the 20 makes 26
first Key 9 second Key 13 third Key 5 and
occasional α is always put under those figures
composed thus as above.

now for June

In the Letter V there is D that is normative
for which should not be reckoned the points deduce
into practice the first N^o drawn out 27 and it
is the Strolling Letter and the N^o 10 recurs to
 Δ , and will make the Numbers cast up 7. I
Letter, Key 9, and Day 27, but that is 26 say 26
first Key, that is the 13 and weight 4 of 27 second
Key 10 and 5 that and the weight of the afore said
oriental number and is said 19 but that in
stead of Not, is always put occident ~~which is called~~
97, because 9 and Key of the Month ~~and the~~ 7
the final ~~of~~ ^{number} 20 remains 7, ^{which} makes 6 and the 9
taken from ~~the~~ signifies the Key of 26; letter N 9
makes ~~the~~ Δ 26. 5; thus the sum ~~that is~~ of the
Month of June ~~will~~ give 19, but because 19 is
the oriental Number, ~~it is~~ not to be cast. But
if following ~~it~~, reckon the said sum 26 to the above
to the Solar and so have to the first extract 70;
if ^{you} reckon from 23 the Letter S, ~~and~~ ^{you} have to the
~~bottom~~ the Lunar 37; from 37 if ^{you} reckon the
sum of the sum and if, after weigh the 2 of the 82

Key 7 to the ~~bottom~~ ^{bottom} and so have 90; if reckon
from 26, the 9 to the above ~~to~~ the Lunar ~~and so~~ ^{you} have
80, ~~say~~ Key 8, if finding the wheel 8 and ~~if~~ reckon
the 4 and 8 anterior Number, ~~that~~ ^{which} makes 12
and so ^{you} have ~~the~~ above to the Lunar 27. Observe 70.37
90.80.27.

Let us come to the Example of July in which is
looked ~~at~~ the sum up ^{to} 24 but as ^{an} unequal Month
1 is added thereto and makes 25 if reckon then to
Δ 25 and it will give 9 look for the 9 at the
wheel and if reckon 24 on account of points
although the void Month has not them, and so have
to the above ~~to~~ the Solar 13 ~~is void~~ ^{is} if reckon
25 to the above and so have 57 if reckon 23 of the
Letter S and so have 34 if reckon 24 downwards
to the Lunar and above to the Solar and so have
31 from 36 is always reckoned as unequal Month
exclusive and if reckon then 36 ^{of} 43 makes
57 note 13.57 observe 13.57.34.31.57.—
(although is not without mistake) which is
exchange of 44. should not be reckoned 44
and have 58 perhaps as most proper 34 to have
51 from N° 40 downwards to the unity are all
Numbers unequal combinators and for
that ^{reason} such are they called; for that give sound
and value and combined with the equal Numbers
as is to be seen in the Alphabet stated more at large
in this Book 3.5.7.9 that is to say 25.26.8.18.19.20
23 and 24 ~~the~~ ^{such} Numbers gives the Key as afore
said beyond to the Letter of the Month and in particular
the first as will be seen in its tables laid out for such
purpose for greater ~~clarity~~ ^{clarity} and for ~~such~~ ^{that} is wrote
to be observed. ~~introduce~~ ^{introduce} ~~and~~ ^{into} ~~where~~ ^{where} and

another way

the extract in the unequal

In the beginning where the unity is that is to say N° 1 and afterwards follows 6 as antecedent Number to its unity.

considers well such ^{spirit} personary not so much its antecedent as ~~shows~~ its subsequent and this is done if ^{you double} ~~double~~ its value to the tenor of its sound and go to the ^{top} ~~sum~~ or ^{bottom} ~~base~~ of the Wheel ~~for~~ to find out such combining Numbers.

(This I think should come in to the 5th Chapter of this work)

Numbers Calculated by Count Cagliostro for the Lottery 1776 in London

Exact 9

| Number | Day of Drawing | Aspects | Page |
|---------|----------------|--|------|
| 20 | Novem 6 | $\begin{smallmatrix} 8 & 2 \\ 0 & 5 \end{smallmatrix}$ | |
| 25 | Nov 7 | | 26 |
| 55 & 57 | Nov 18 | | |
| 8 | Decem 7 | | |

7th Novem
 Month 8
 Day 6
 Moon 10
 Anterior 3 no point in unequal
 27
 enter with 27 in the Δ and it gives for Pole 21 now 21 is a
 and has the Key D which is to enter the Wheel at 21 and reckon to clear Upwards any given 25

any taken from

Ep

Mont

Day

Mo

I am any thank you for

February
March to the one from

April
March 1st one from

June

July

August

September 20 1891

October

November 20 1890

Laconia

Epact 9-9-1870

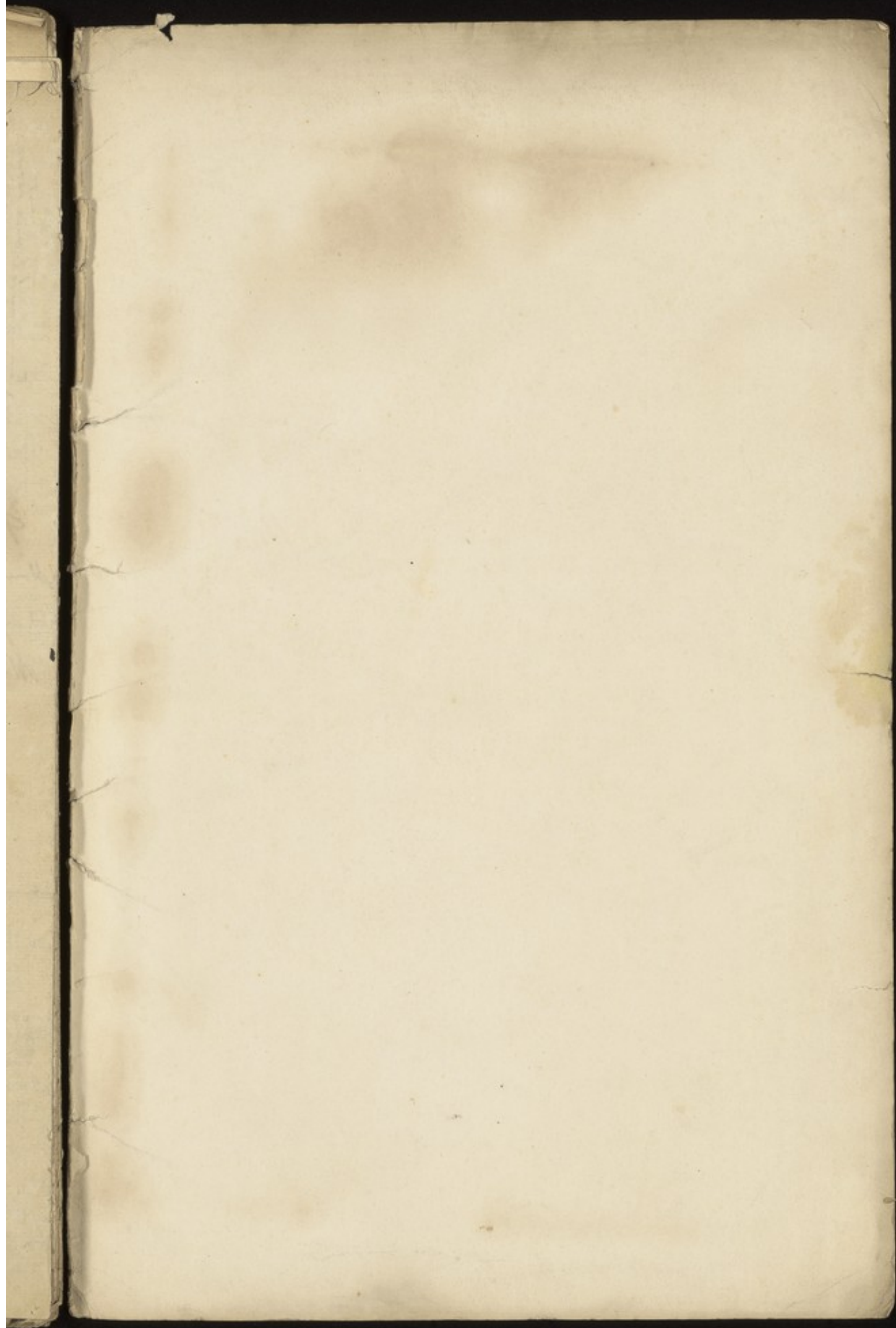
Month 1-2-1-2-3-4-5-6-7-8-9-10 December

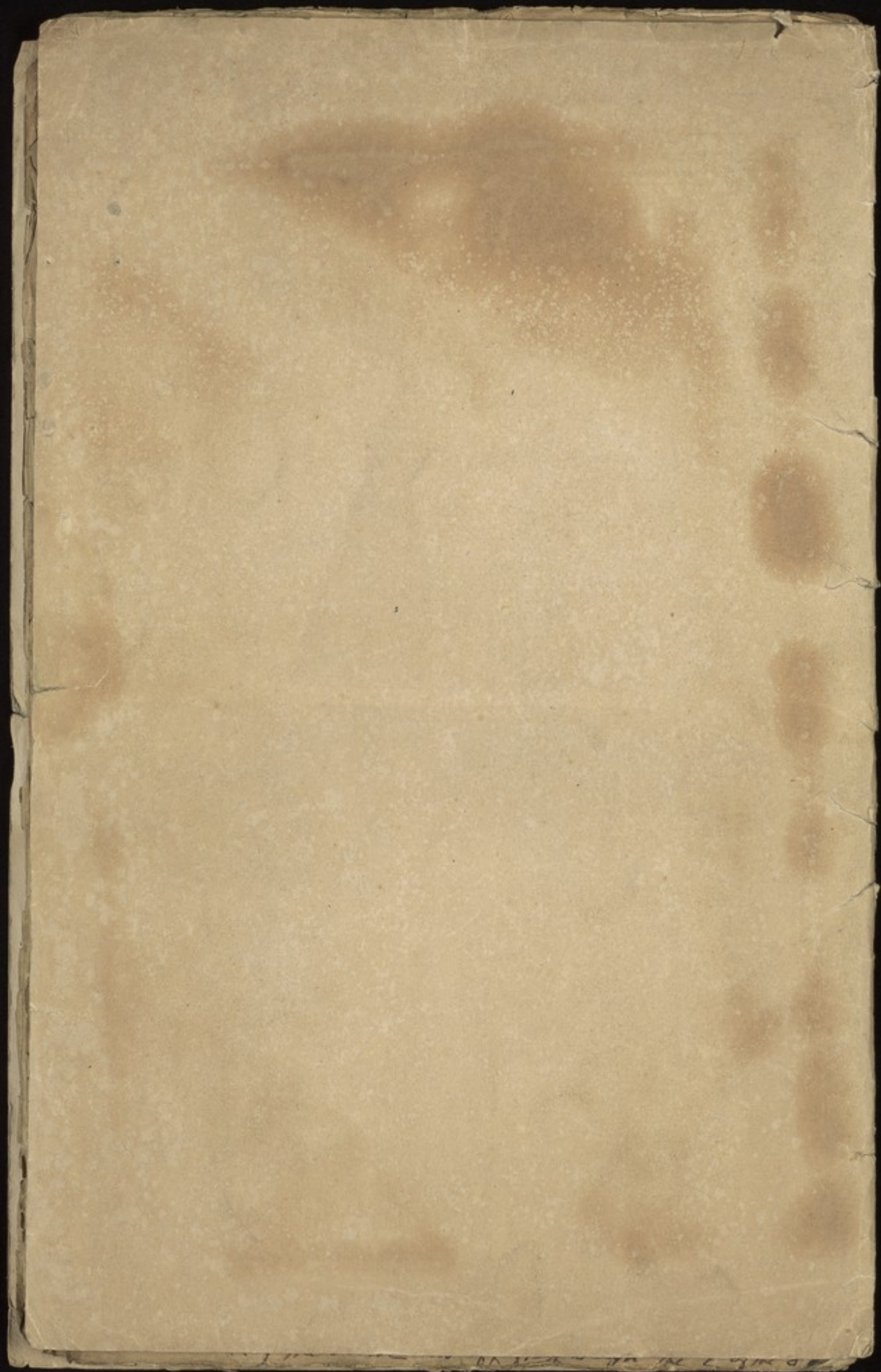
Day of the Month add to the above

Moon age is given

Sunday --- Dies Solis
Monday --- Dies Lunae
Tuesday --- Dies Martis
Wednesday --- Dies Mercurii
Thursday --- Dies Jovis
Friday --- Dies Veneris
Saturday --- Dies Saturni

January --- Ianuarius - 9 Letters
February --- Februarius - 10
March --- Martius - 7
April --- Aprilis - 7
May --- Maius - 5
June --- Iunius - 6
July --- Iulius - 6
August --- Augustus - 8
September --- Septembris - 9
October --- October - 7
November --- November - 8
December --- December - 8







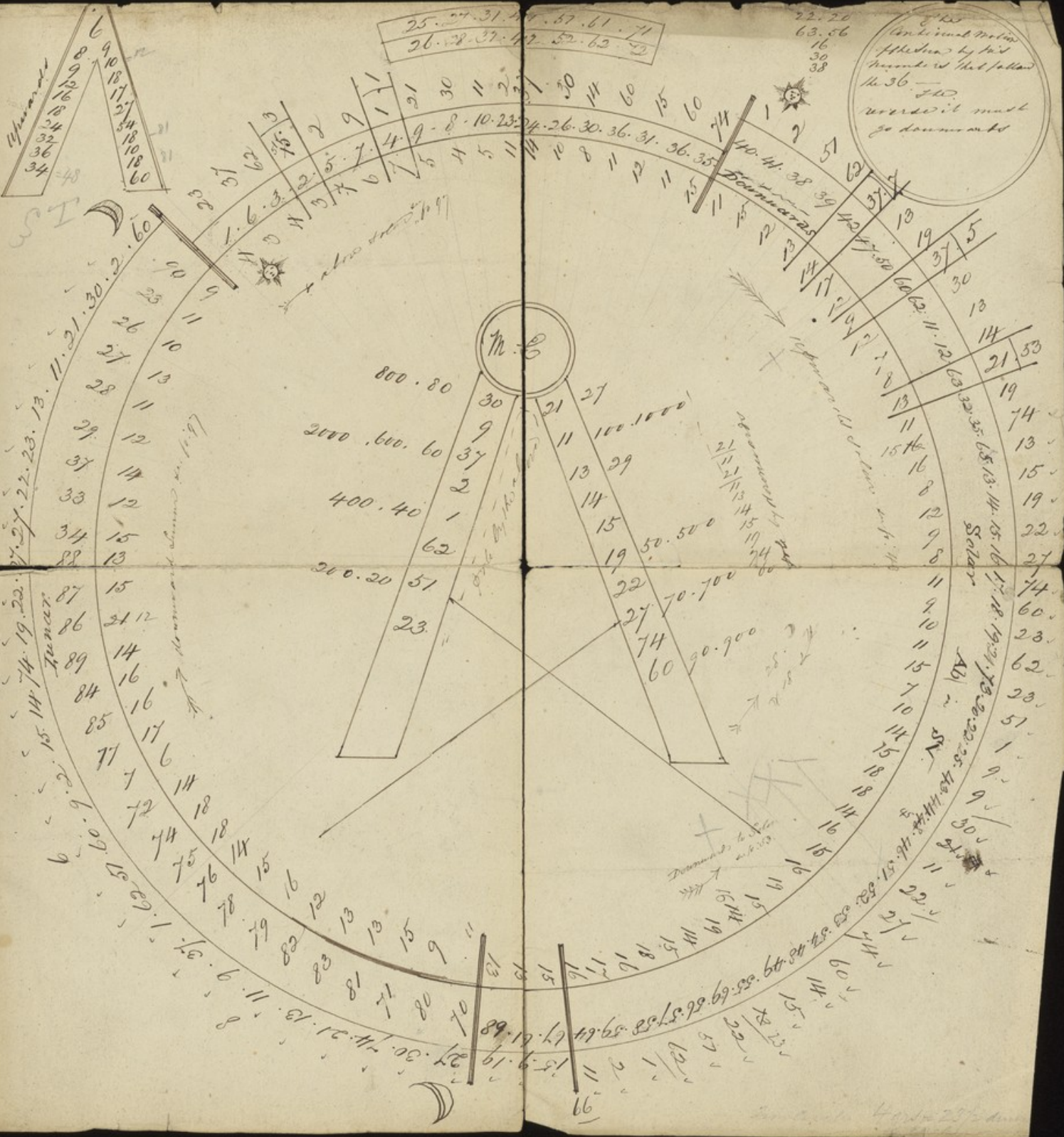
25. 27. 31. 47. 57. 61. 71
 26. 28. 37. 42. 52. 62. 72

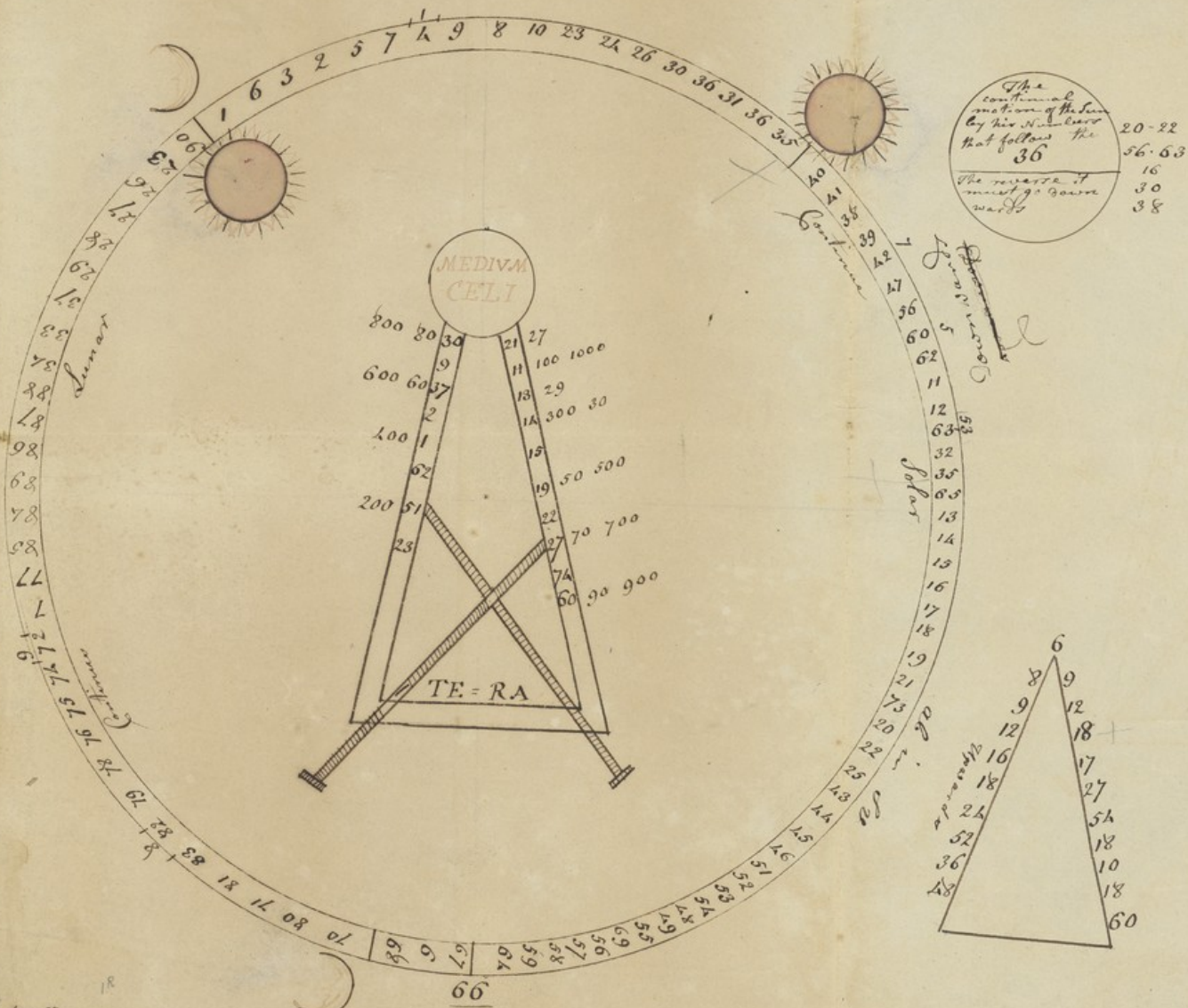
22. 20
 63. 56
 16
 30
 38

8. 10
 Ankiunt Motion
 Affected by the
 movement of the planet
 in 36. 540
 upward must
 go down and

Upward
 6
 9
 10
 12
 13
 14
 15
 16
 17
 18
 19
 20
 21
 22
 23
 24
 25
 26
 27
 28
 29
 30
 31
 32
 33
 34
 35
 36
 37
 38
 39
 40
 41
 42
 43
 44
 45
 46
 47
 48
 49
 50
 51
 52
 53
 54
 55
 56
 57
 58
 59
 60

ST

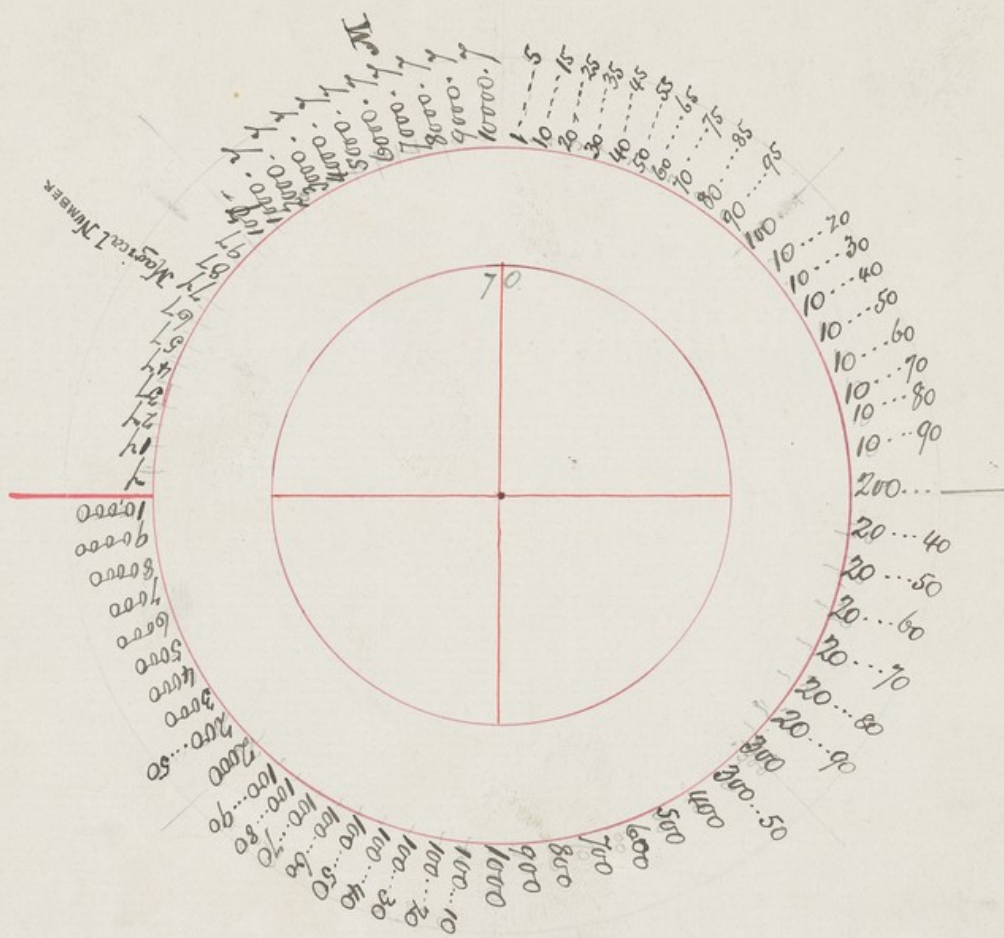




from 27
The whole has 15 lines 25-5-16 and 7

The whole has from 51-18-22-3-14-4

on Spool
on Catalogue



8173.
Vol 9 - Jan 165
Eden 4 Dec 1855.
My Language.

My Language -

56400

1747

HANDLE CAREFULLY

Manuscript. EXTRACT FROM THE TABLES OF ROTATO,
invented by him in the Year 1500, being a Triangular
Wheel containing Number, Weight and Measure; this
hidden Treasure is establish'd upon Mathematical,
Astronomical and Alegbraical Points, found out by
much study, with a Praxis on the Lottery at Rome, by
T. M. N. *drawing of the wheel, calf* 1744

•• The original of this book was in the Vatican Library,
and was death for any person to copy, but was written
out from memory by a monk who visited it daily till he
had effected his purpose. Dr. Sibly gave 300 guineas (£3/6)
for permission to copy it. From this work Cagliostro
learnt his surprising feats.]



ACCESSION NUMBER

56400

PRESS MARK

957