

Album of photographs taken by Lieutenant Power, RAMC, of a route march from Deesa to Poona (Pune), India

Publication/Creation

c.1903

Persistent URL

<https://wellcomecollection.org/works/xgwh2ghj>

License and attribution

You have permission to make copies of this work under a Creative Commons, Attribution, Non-commercial license.

Non-commercial use includes private study, academic research, teaching, and other activities that are not primarily intended for, or directed towards, commercial advantage or private monetary compensation. See the Legal Code for further information.

Image source should be attributed as specified in the full catalogue record. If no source is given the image should be attributed to Wellcome Collection.



Wellcome Collection
183 Euston Road
London NW1 2BE UK
T +44 (0)20 7611 8722
E library@wellcomecollection.org
<https://wellcomecollection.org>

723

723



HEADQUARTERS, LONDON DISTRICT

Horse Guards, Whitehall, LONDON S.W.1

Telephone: WHITEhall 4466, ext.

16th October 1961.

Dear General -

On the afternoon of October 9th the enclosed album was deposited in my office by a Mr Toddant, who discovered it in a house he has recently occupied in Lewisham (87, Malvern Road, Ladywell, S.E.11). He could give no further information. Toddant is a youngish man who has served in the RAF -

I thought that perhaps you might have met Lieut Power R.A.M.C. ("who took these photographs"), or that the prints of the improvised Bullock ambulance and the Shostic might be displayed

Rt - Capt A.E. Barmey CB, MC, MD
RANC Kitchin's Museum
Queen Elizabeth Barracks
Crookham
Hants.

Very much
Have a very
kind regards!
Yours
Sincerely
A.E. Barmey

From Deesa
to
Dorset by
Route March
ca. 13 Jan. to March 11th

R.A.M.C. Historical Museum,
Queen Elizabeth Barracks,
Crookham,
Hants.
Fleet 971.



LT Power. Lt Clayton CAPT. DAVY.
Capt. DARELL BROWN Lt. Weatherly.



Crossing Stream.



Refreshments Between Camps.
Designated. "Half Way House."



Co² Clayton making the best use of A Mauser.



Group of N.C. of "F" and "G" Company.



Crossing the River.



Wet feet again



*Dhoodie Bearers
Ambulance for the Sick*



$\frac{17}{20}$ Power. R.A.M.C.
 Who took these Photos on March



Sick Ambulance
 nicknamed. The Sun Cart
 occupants. The Sick frame and Rays.



CAMELS crossing RIVER by BOATS
A Very Difficult TASK.



OUT TRANSPORT.



N. C. 5.



Officers, who took part
in the march.

Native Followers.



Breastle or
WATER carrier.





Just arriving In new Camp.



Meshana.



More Wet Feet



Very Good for RHEUMATICS



Refreshments. After A Hard March



Taking it Steady
Over the Rocks.



One of our Camels
Having A BATH. By accident.



NATIVES Who are not used to seeing
European Troops.



THROUGH THE WATER AGAIN



Awful near lost.



A Welcome Rest.



*T.A.'s Wardrobe Complete
On Camels.*



R. C. 02



BAGGAGE Guard

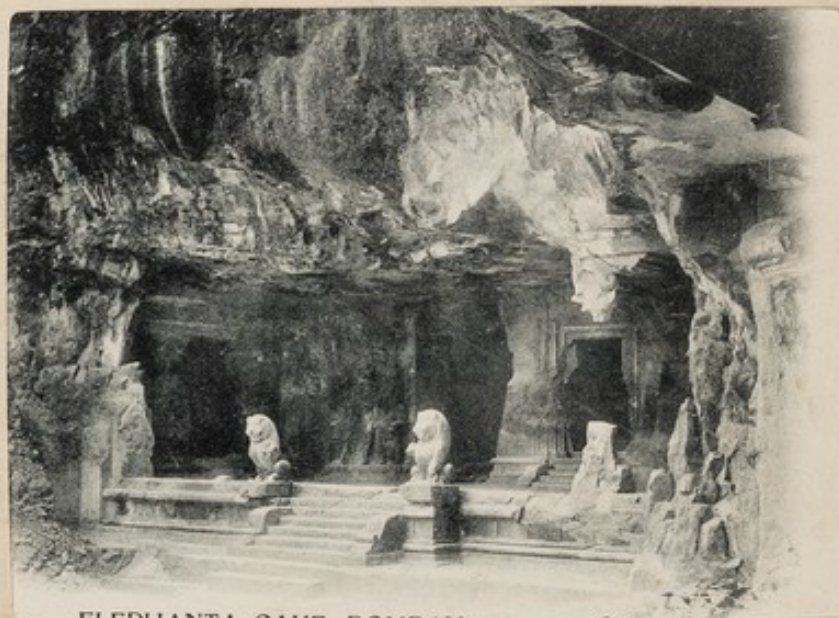
Crossing By Boat





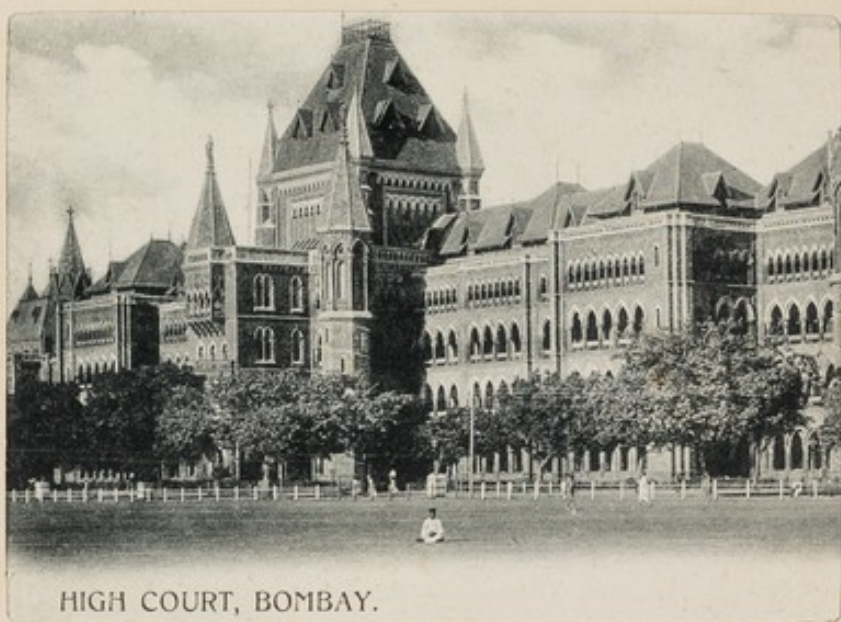
A COBBLER.

Clifton & Co.



ELEPHANTA CAVE BOMBAY





HIGH COURT, BOMBAY.





CRAWFORD MARKET BOMBAY

Clifton & Co





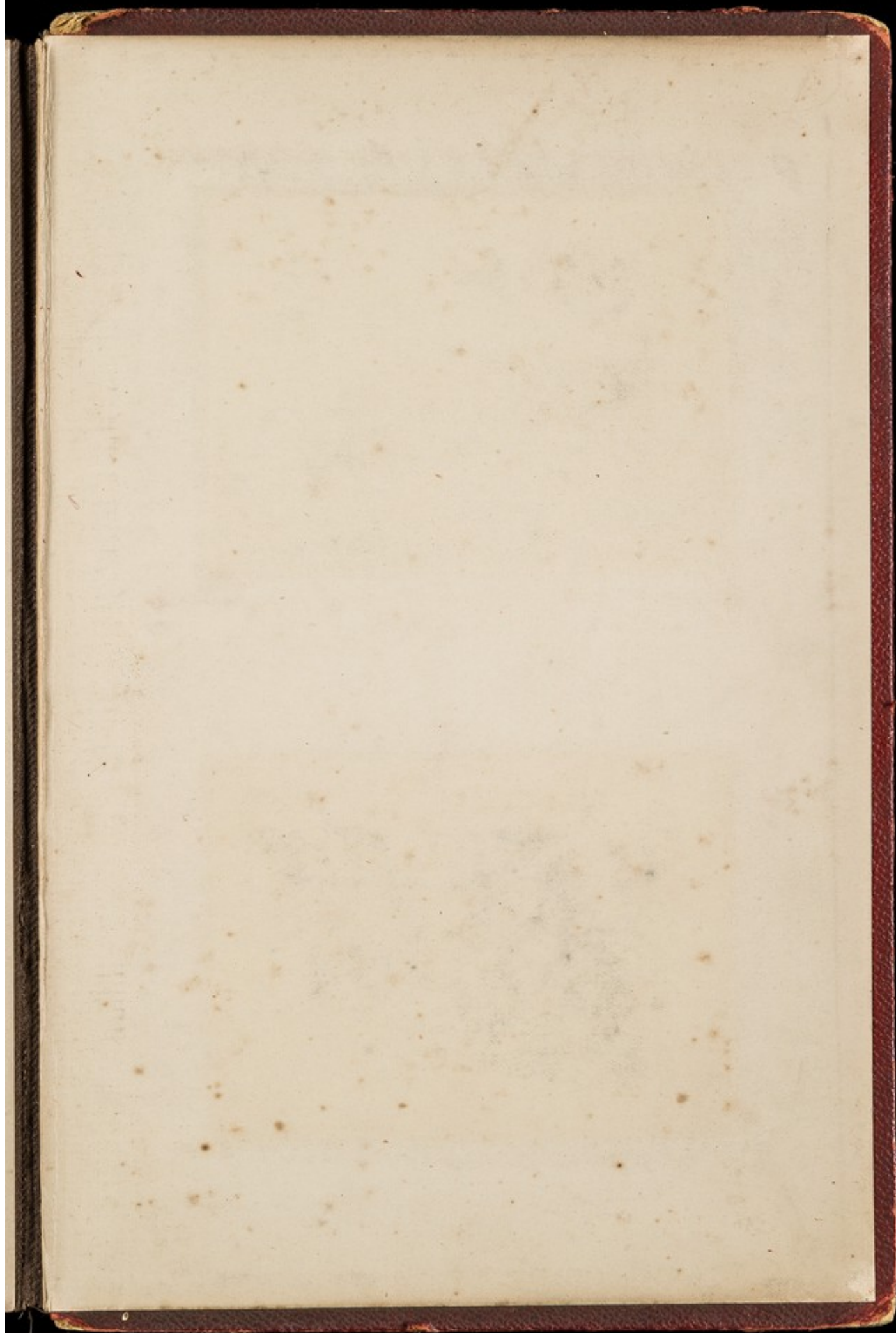


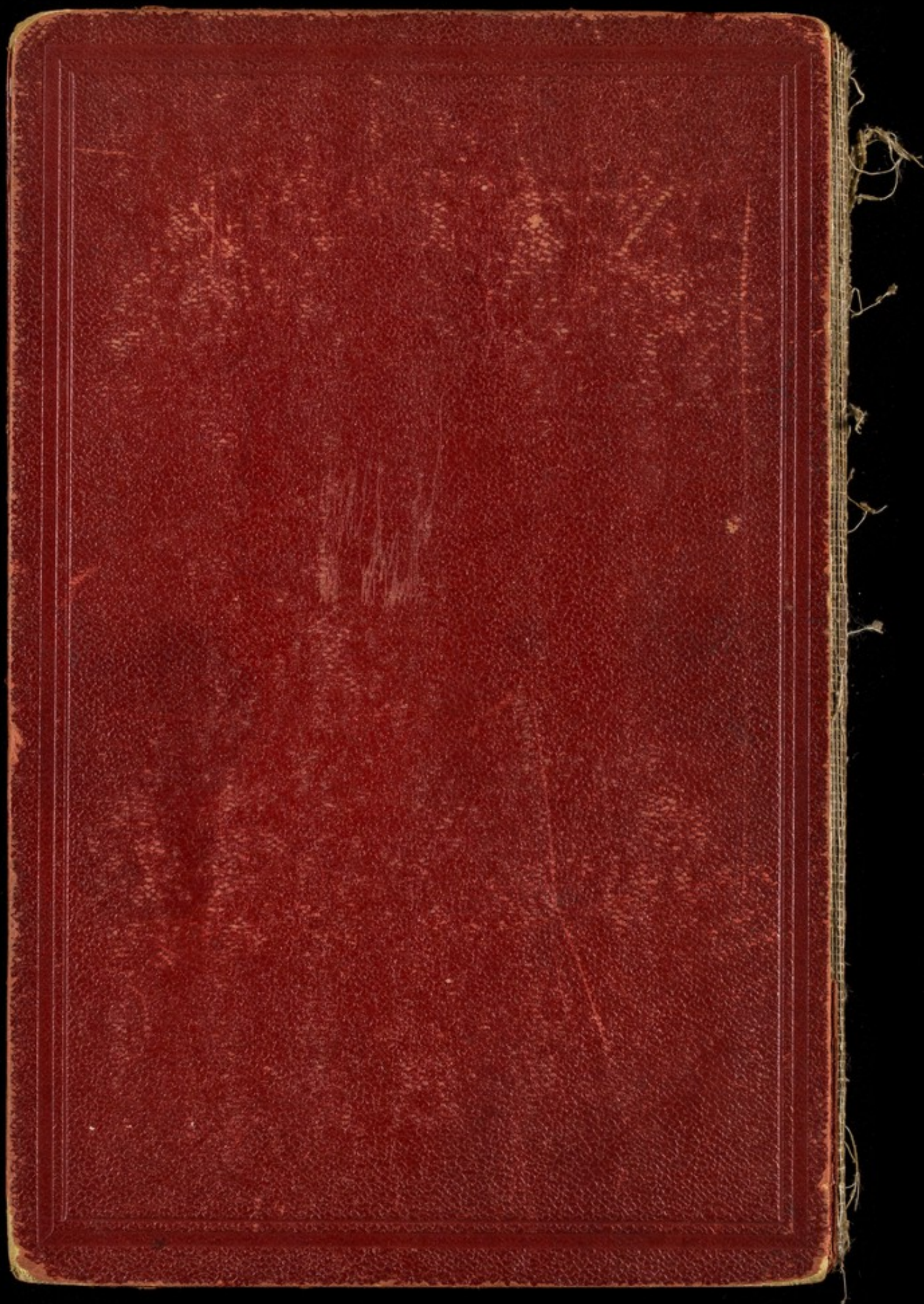




KASHMIR GATE, DELHI.

Clifton & Co.







LT Power, LT Clayton CAPE DAVY.
Capt. DARELL BROWN

Lieut Weatherly.



Crossing Stream.



Refreshments Between Camps.
Designated. "Half Way House."



Co. Clayton. making the best use of A. H. 27.



Group of N.C. 5th "F" and "G" Company.



Crossing the River.



Wet feet again



Dhoolie Bearers
Ambulance for the Sick



P⁷
no

Power. R. A. M. C.

Who took these Photo's on March



Sick Ambulance
rick named. The Bul Cart
occupants. The Sick frame and Rags.



CAMELS crossing RIVER. by BOATS
A Very Difficult TASK.



Our transport.



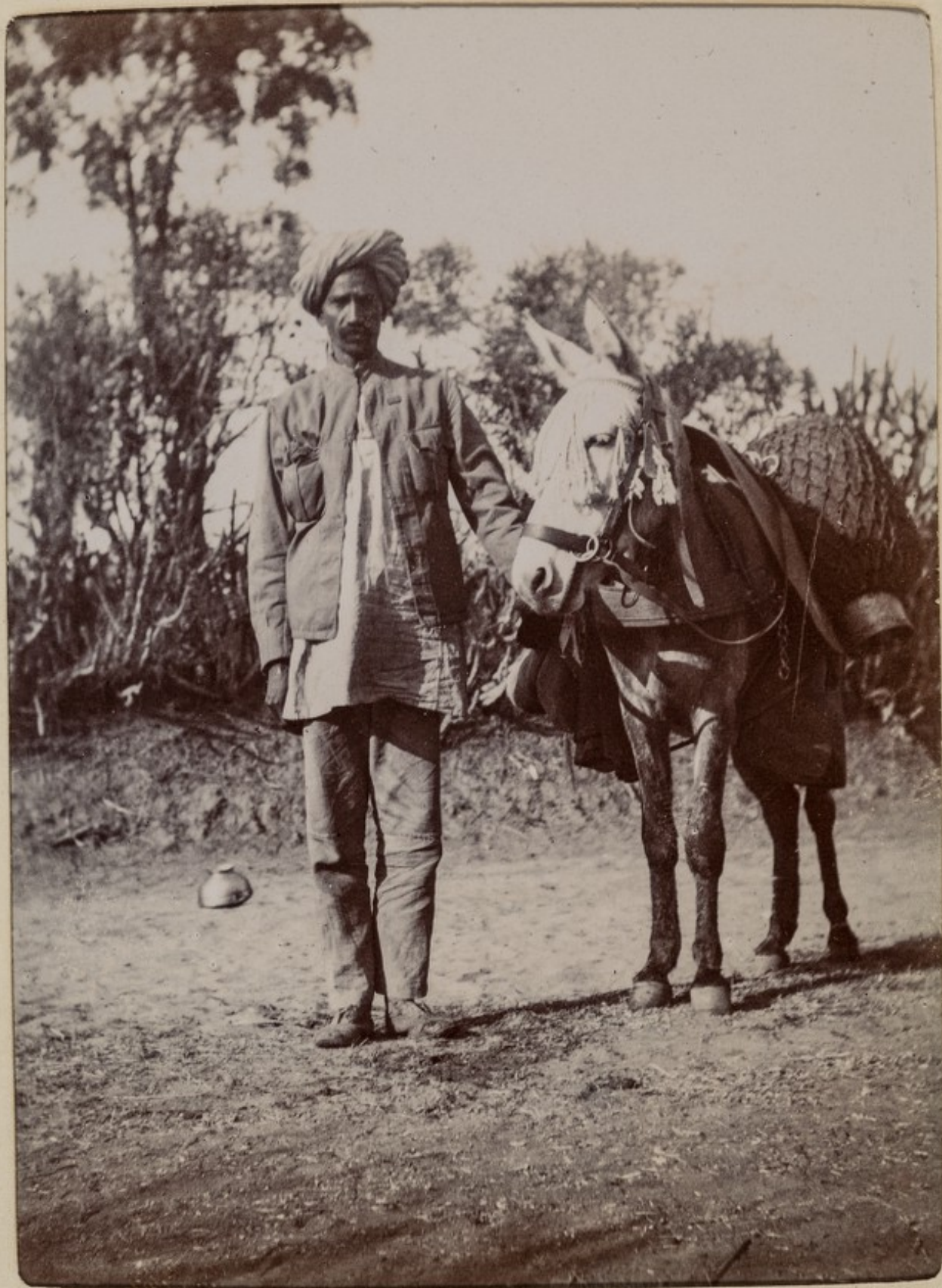
N. C. O'S.



Officers, who took part
in the march.



Native Followers.



13 Feaster of
WATER Carrier.



Just arriving In new Camp.



Meshana.



More Wet Feet.



Very Good for RHEUMATICS



Refreshments. After A Hard March.



*Making it Steady
Over the Rocks.*



One of our Camels
Having a BATH. By accident.



NATIVES WHO ARE NOT USED TO SEEING.
EUROPEAN TROOPS.



THROUGH THE WATER Again



Awful near lost.



A Welcome Rest.



T.A.'s Wardrobe Complete
ON CAMELS.



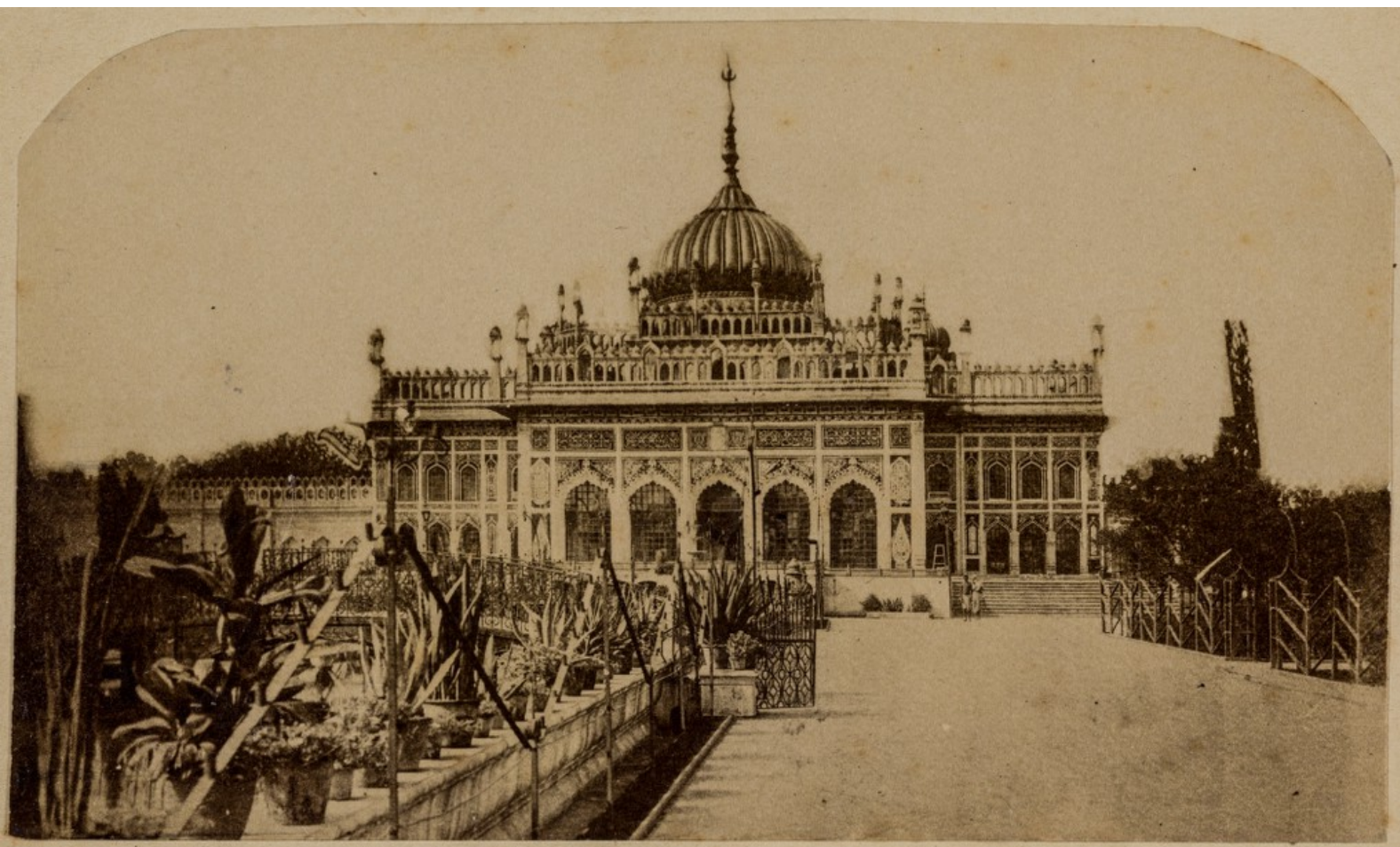
H. C. 08



BAGGAGE Guard

Crossing By Boat



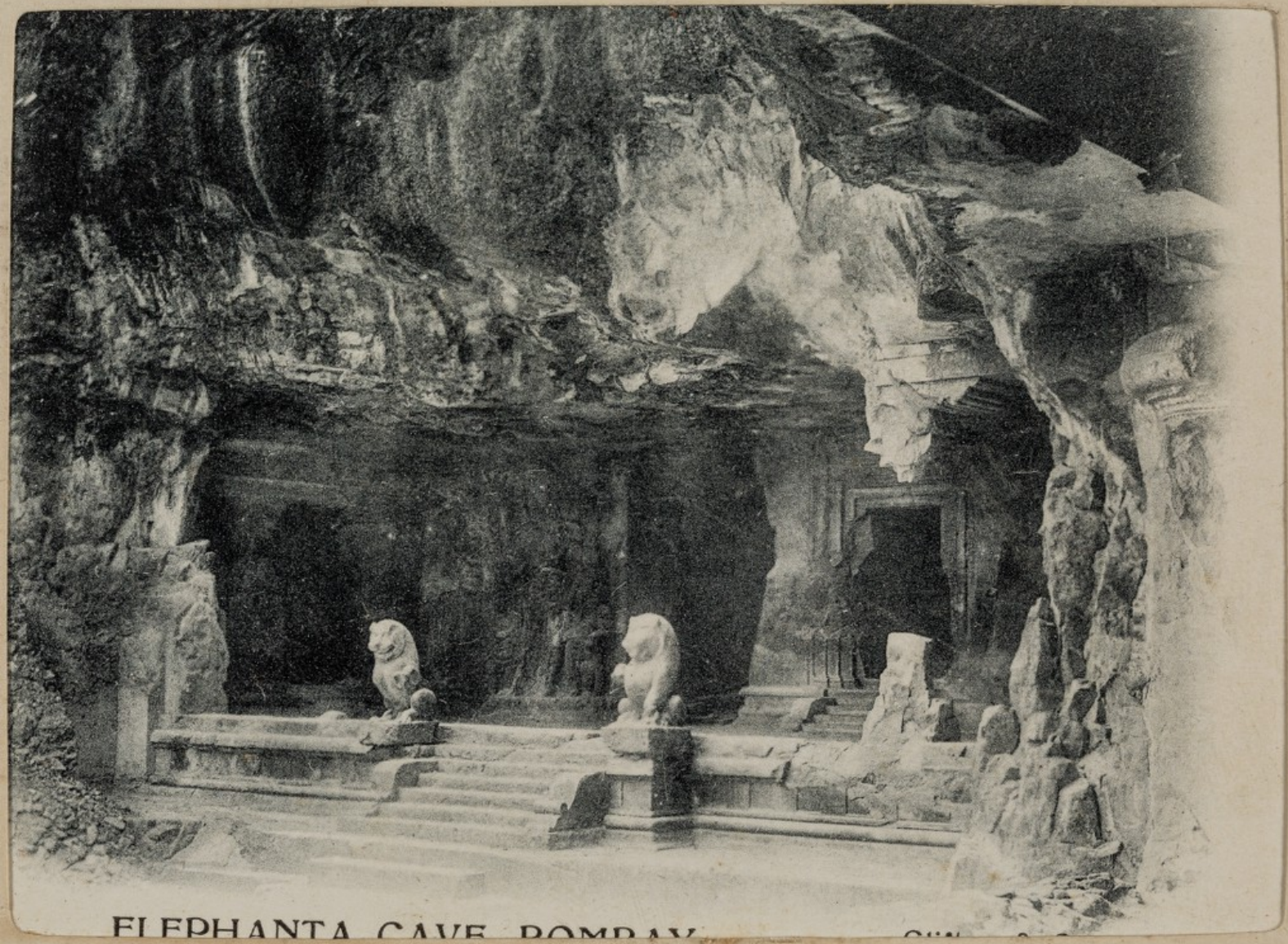






A COBBLER.

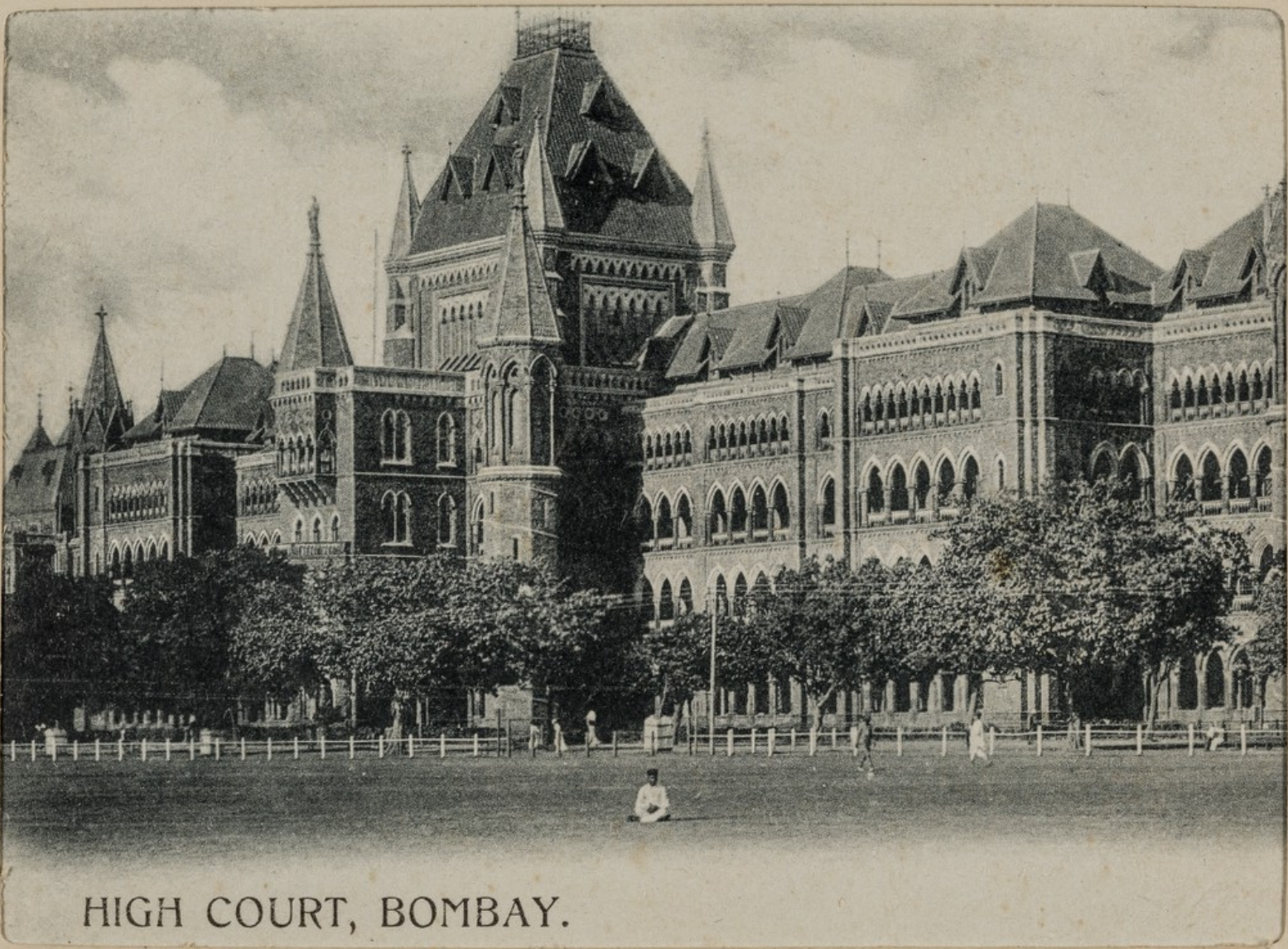
Clifton & Co.



ELEPHANTA CAVE BOMBAY

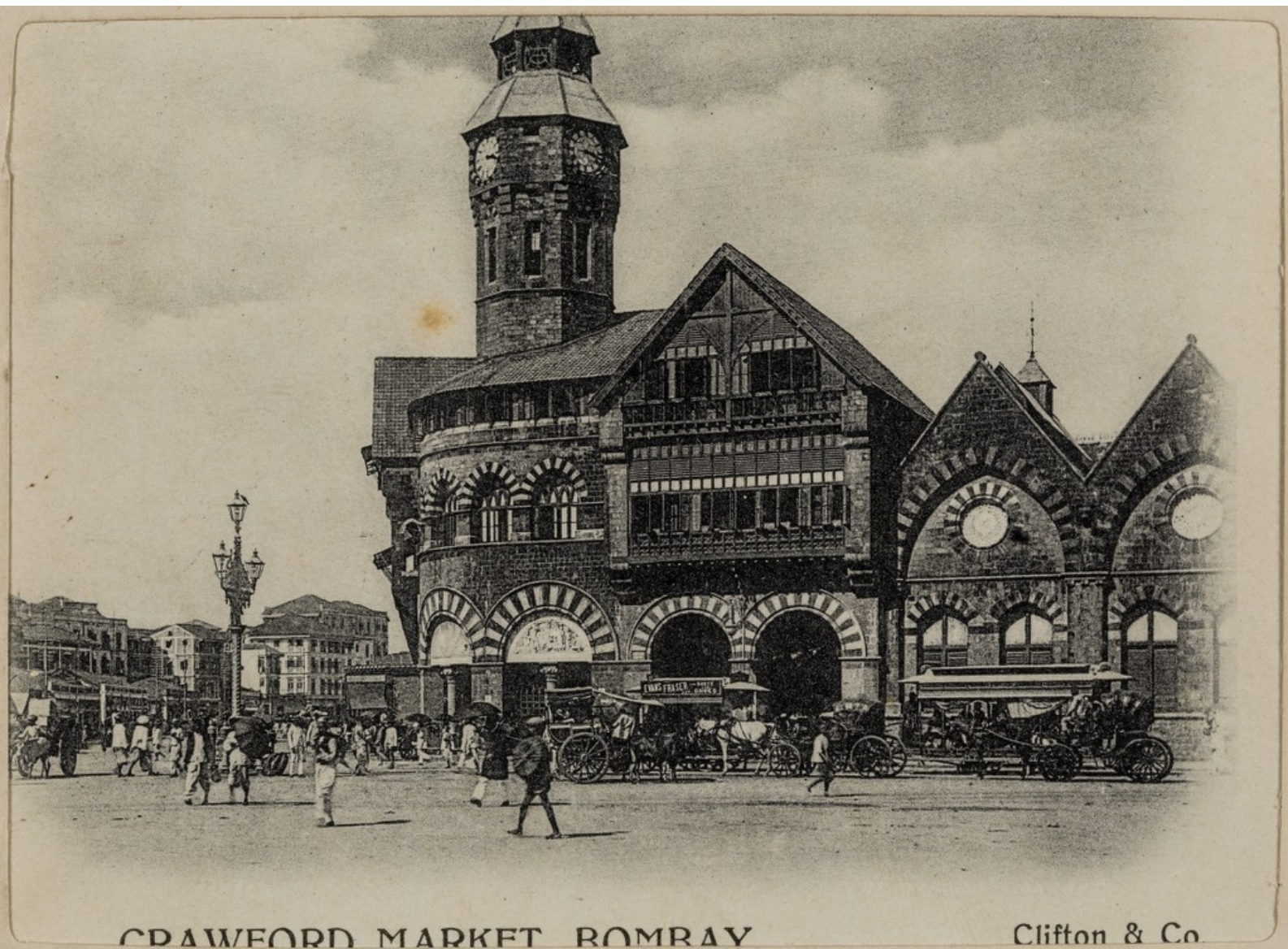






HIGH COURT, BOMBAY.

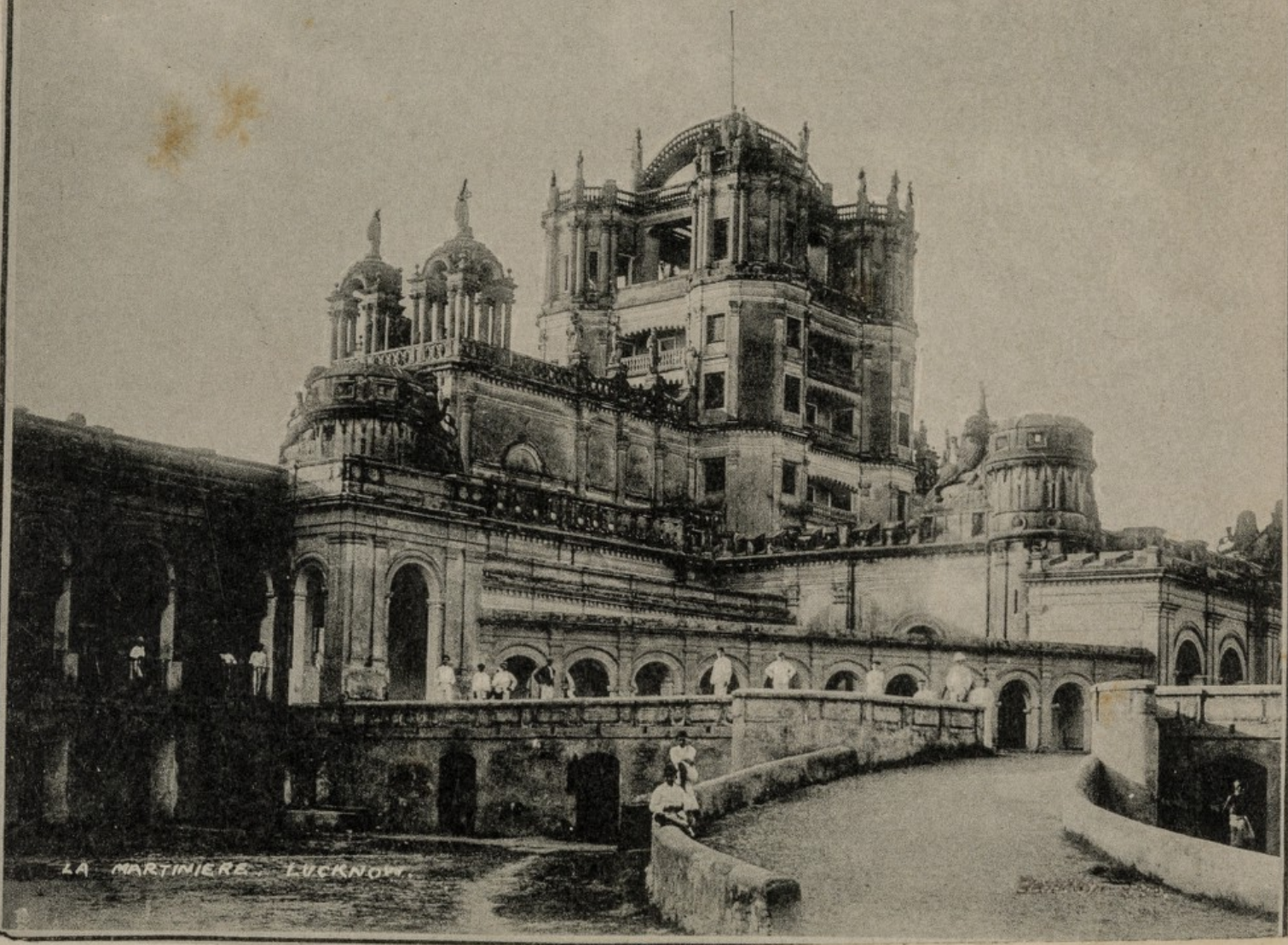




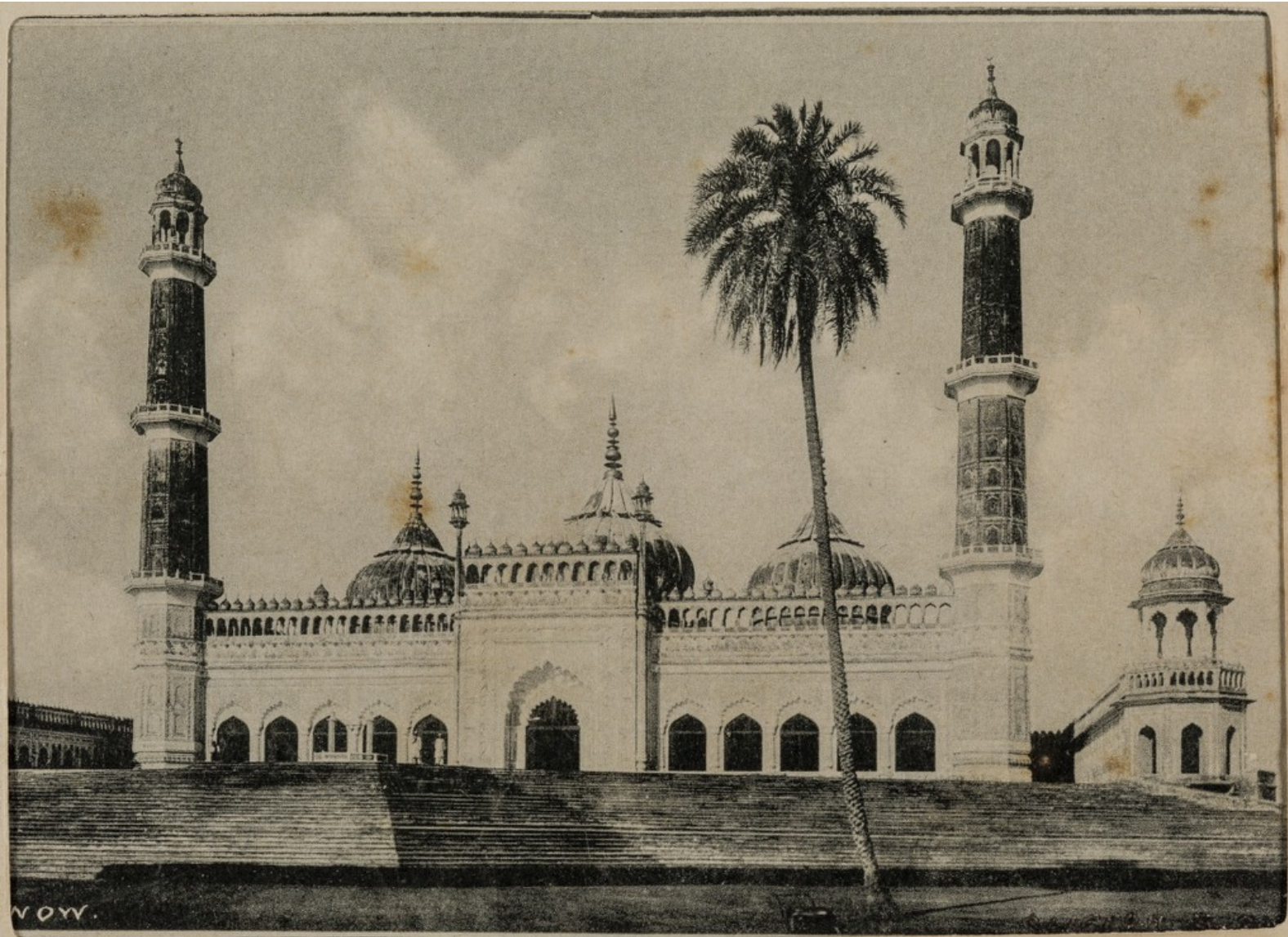
CRAWFORD MARKET BOMBAY

Clifton & Co

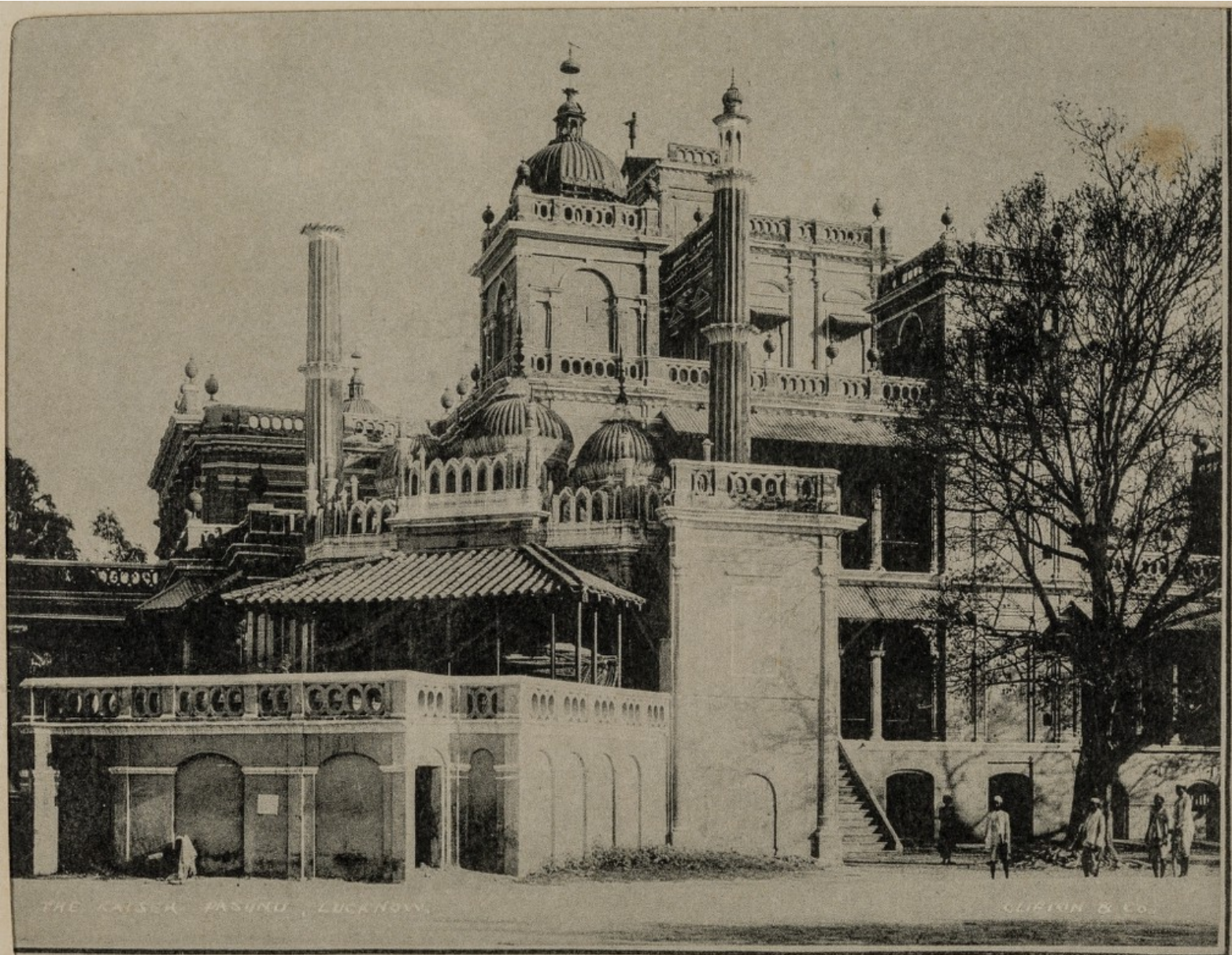




LA MARTINIÈRE. LUCKNOW.







THE KAISER BAZAR, LUCKNOW.

CLIPTON & Co.



T. & Co.
AY.

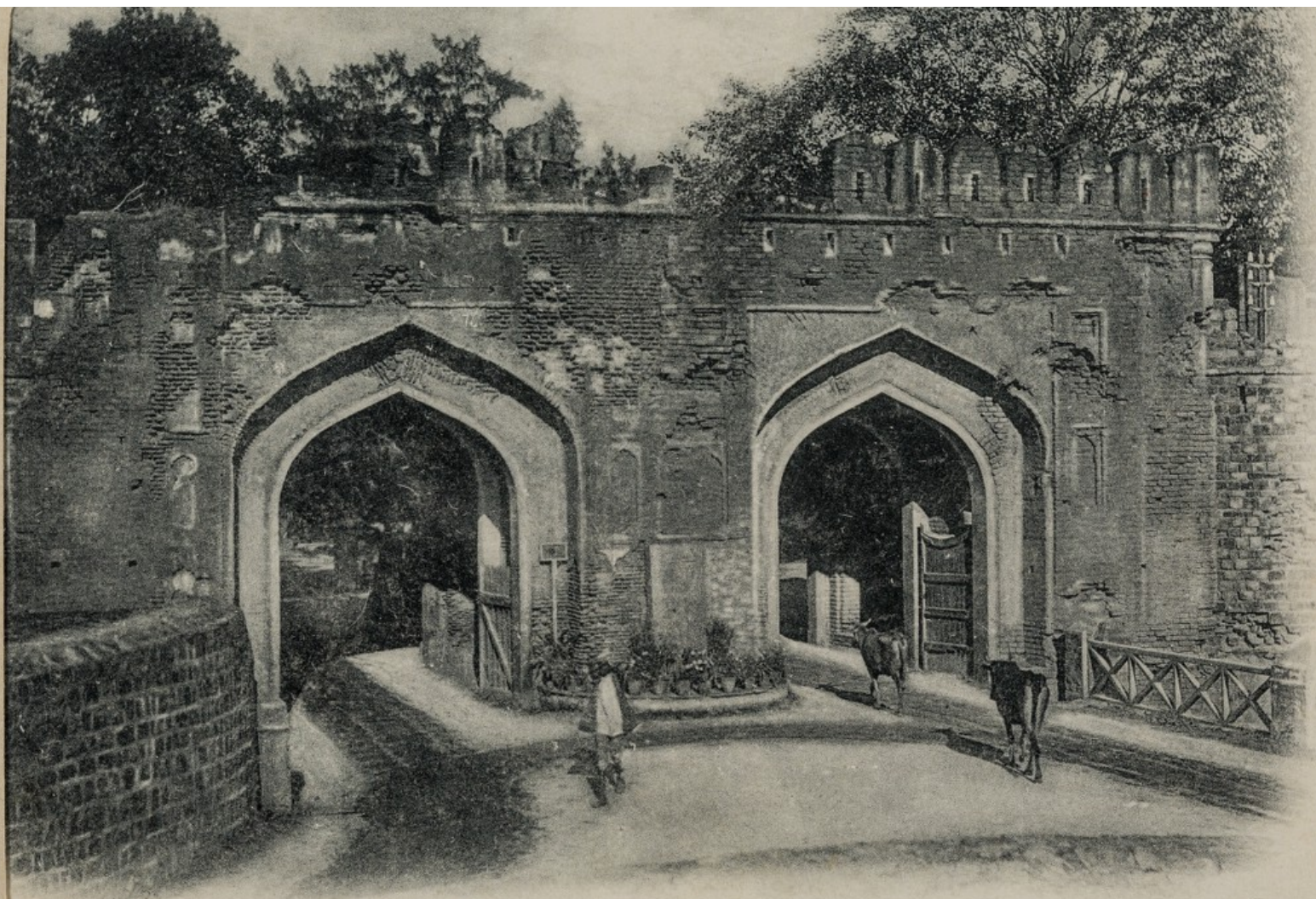
ROAD
SWEEPER



INDU WOMAN.

Clifton





KASHMIR GATE, DELHI.

Clifton & Co.