

Box H. Trypanosomiasis

Publication/Creation

c.1894-1903

Persistent URL

<https://wellcomecollection.org/works/ggpxv9x6>

License and attribution

You have permission to make copies of this work under a Creative Commons, Attribution, Non-commercial license.

Non-commercial use includes private study, academic research, teaching, and other activities that are not primarily intended for, or directed towards, commercial advantage or private monetary compensation. See the Legal Code for further information.

Image source should be attributed as specified in the full catalogue record. If no source is given the image should be attributed to Wellcome Collection.



Wellcome Collection
183 Euston Road
London NW1 2BE UK
T +44 (0)20 7611 8722
E library@wellcomecollection.org
<https://wellcomecollection.org>









1242

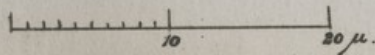
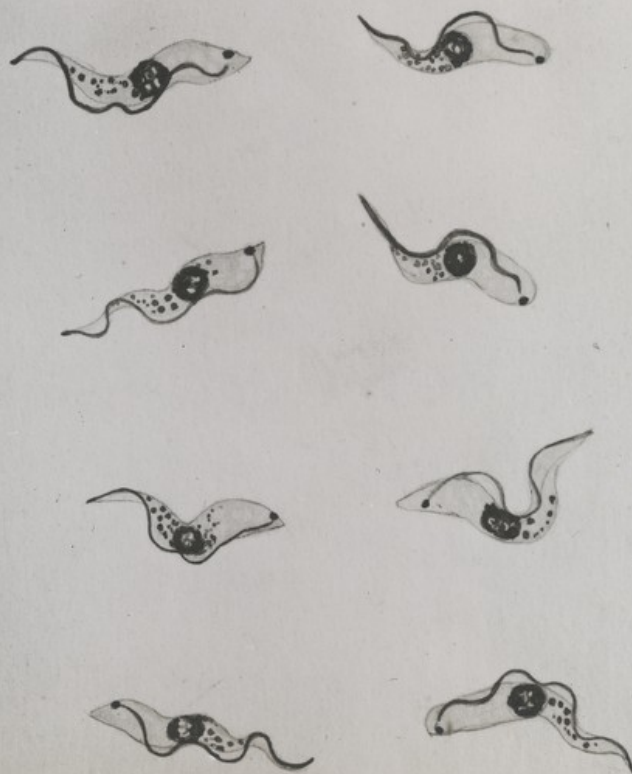
H



1	H. 1. T. Pearson. dog. Uganda
2	H. 2. T. Namami. Soap. Uganda
3	H. 3. T. Numa. mill. Uganda
4	H. 4. T. Campbell. dog. Uganda
5	H. 5. T. Bruce. dog. Uganda
6	H. 6. T. Fambine. monkey. Uganda
7	H. 7. T. Lucas. dog. Uganda
8	H. 8. T. Ruzizi
9	H. 9. T. Bruce. dog. Uganda
10	H. 10. Hippo
11	H. 11. T. M. D. D. D.
12	H. 12. T. M. D. D.
13	H. 13. M. K. B. - dog. Uganda
14	H. 14. James Martin. - dog. Uganda
15	H. 15. - dog. Uganda
16	H. 16. Beane. River -
17	H. 17. Nile. River.
18	H. 18. Nile. River.
19	H. 19. Nile. River.
20	H. 20. Nile. River.
21	H. 21. Wooding. on. Nile
22	H. 22. Nile. River.
23	H. 23. Nile. River.
24	H. 24. Nile. River.
25	H. 25. Nile. River.
26	H. 26. Nile. River.
27	H. 27. Nile. River.
28	H. 28. Nile. River.
29	H. 29. Nile. River.
30	H. 30. Nile. River.
31	H. 31. Nile. River.
32	H. 32. Nile. River.
33	H. 33. Nile. River.
34	H. 34. Nile. River.
35	H. 35. Nile. River.
36	H. 36. Nile. River.
37	H. 37. Nile. River.
38	H. 38. Nile. River.
39	H. 39. Nile. River.
40	H. 40. Nile. River.
41	H. 41. Nile. River.
42	H. 42. Nile. River.
43	H. 43. Nile. River.
44	H. 44. Nile. River.
45	H. 45. Nile. River.
46	H. 46. Nile. River.
47	H. 47. Nile. River.
48	H. 48. Nile. River.
49	H. 49. Nile. River.
50	H. 50. Nile. River.

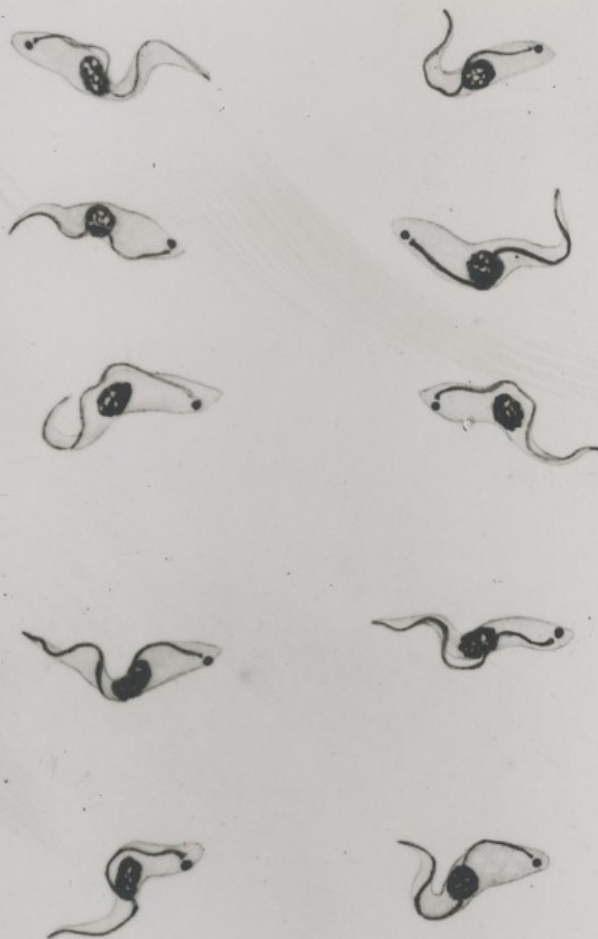
1	Pearson
2	T. Bruce
3	T. Bruce
4	T. Bruce
5	T. Bruce
6	T. Bruce
7	T. Bruce
8	T. Bruce
9	T. Bruce
10	Hippo dead a Lake Victoria -
11	Distractor - Uganda
12	Butiaba port a Lake Albert -
13	Koba Lake Albert.
14	"James Martin" with pointers -
15	on the upper Nile
16	Crossing the Assuan river -
17	Nile natives -
18	" as porters -
19	N°
20	"Culex" taking in wood -
21	a wood station, on the Nile
22	Village
23	Fashoda (Kodok) from the Nile
24	Dug out, on Nile
25	Rouman. do -
26	Sharduf - irrigation d. Khartoum
27	N°
28	Abu Simbal - Tomb -
29	Philae - "
30	- N° -
31	- N° -
32	- N° -
33	Below the Assuan Dam -
34	Karnak, Assuan of sphynx -
35	Thebes -
36	- N° -
37	Suez canal -
38	- N° -
39	Aden -
40	Kirenga, Lake Victoria -
41	From S. William Mac L. Victoria
42	a small island - N°
43	Table. Duration of journey -
44	" Feeding place -
45	The Cataract Hotel Assuan -
46	On Floeth, upper Nile -
47	T. Bruce -
48	Chase T. Bruce -
49	" T. Bruce
50	" - N° -

H. 1. *T. pecorum* - from Dog



T. Pecorum. dog.

H. 2. *T. Nanum*. Goat. Uganda



10 20 μ .

T. Nanum. goat.

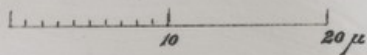
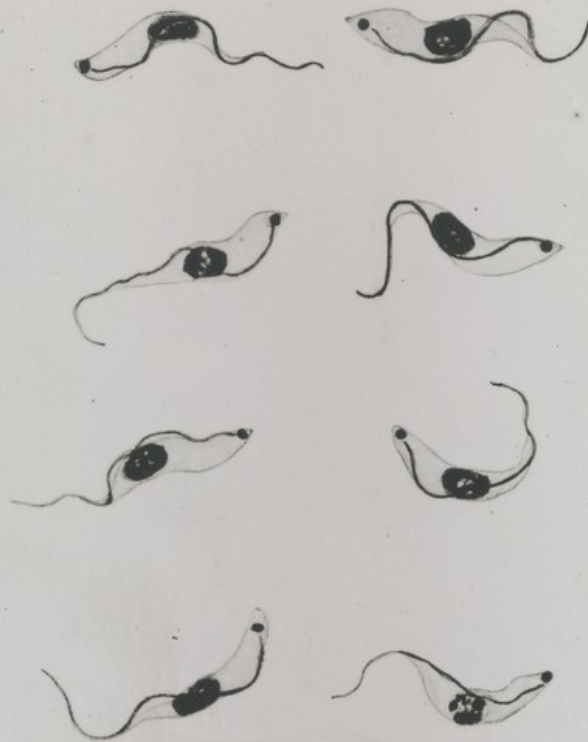
A. 3. *T. Vivax* - bull. - Uganda



10 20 μ .

T. Vivax. bull.

H-4-T. ~~Casalboui~~ ^{symptomatic} Oe. Uganda



T. Casalbouii. Oe.

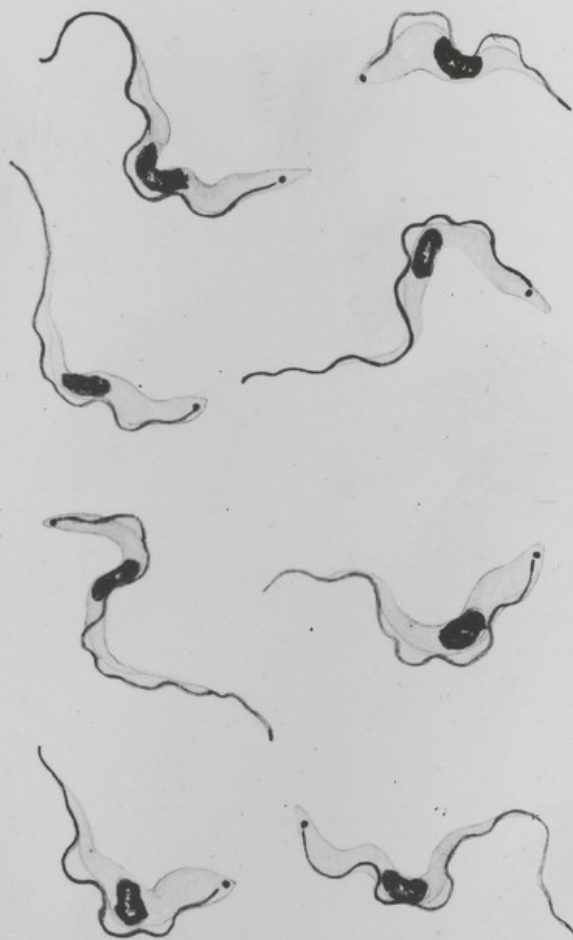
14. ♀. *T. brucei* - dog. Uganda Zulu



10 20 μ

T. Brucei. dog.

H. B. T. Gambiense - Monkey - Uganda



10 20 μ .

T. Cambiense. monkey.

H. 7. *T. ingens* - bull. Uganda



10 20 μ

T. Ingens . bull.

8 *T. ingens* Reed buck.



10 20 μ

T. Ingens. reed buck.

H. ~~W.~~ T. Brucei — Uganda. rat.



T. Brucei. rat.

H. 10. Hippo. on Lake Victoria



H. 11. The destructor. Nipponia



14. 12. Butiaba. Lake Albert



H. B. Koba. Lake Albert.



14 "Jane Martin" with Port ^{Wadell}



H 15. on the Upper Nile 1910



H 16 Crossing The Asua River



H-17. Nile Natives — Porters



H. 18 mile porters - Upper Nile



H 19 Porters - Nile natives



H. 20 The Culese Taking in wood



14.21 Wooding the Culex on Mule



H. 22. a Village on Upper Nile



H. 23 Fashoda (Kodok)



H4284 A lovely dug out, upper Nile



25 Douaan .



H 26 Irrigation at Khartoum



27. Irrigation Kharbura



17.28 Abu Simbal - Tonbs.



Phylae . 17 29



Philae H 30



H 31 Philae .



14 32 Philae



#83 Below The Assuan Dam



H 34 Avenue of Sphinxes Karnak



H 35 Thebes.



H36 At Thebes



17 37 on the shore of the Suez Canal



H. 38 on the Suez Canal



1439 Aden



H 40 Kivungu. Lake Victoria



H. 41. From SS William Mac "L. Victoria"



H-42 A lonely island. L. Victoria



H 43 Duration of infectivity -

Duration of the Infectivity of the Glossina palpalis after the Removal of the Lake-shore Population.

Experiment.	Place.	No. of flies fed.	No. of days before infection took place.	Result.	Percentage of infected flies.
52.	Kibanga.	91.	-	-	-
214.	Uninhabited Lake-shore.	2500.	98.	+	0.04.
571.	-do-	1002.	20.	+	0.10.
612.	-do-	615.	12.	+	0.16.
674.	-do-	2315.	29.	+	0.04.
758.	-do-	630.	30.	+	0.16.
976.	-do-	440.	12.	+	0.23.
1117.	-do-	525.	11.	+	0.19.
1276.	-do-	300.	13.	+	0.33.
1462.	-do-	505.	10.	+	0.19.
1465.	-do-	295.	14.	+	0.34.
982.	-do-	456.	16.	+	0.22.
1914.	-do-	3928.	-	-	-
1917.	-do-	2050.	57.	+	0.05.
1919.	-do-	1735.	56.	+	0.05.
2111.	-do-	1065.	28.	+	0.09.
2112.	-do-	680.	15.	+	0.14.
2215.	-do-	1460.	44.	+	0.06.
2271.	-do-	1946.	56.	+	0.05.
2558.	-do-	3257.	41.	+	0.03.
2072.	Damba island.	1510.	-	-	-
2164.	-do-	2370.	-	-	-
2486.	-do-	590.	6.	+	0.17.
2512.	-do-	350.	-	-	-
2545.	-do-	633.	4.	+	0.16.
2547.	-do-	753.	-	-	-

The figures given in the last column -- "Percentage of infected flies" -- are calculated on the assumption that there is only one infected fly in each batch of flies used in an experiment.

H. 44. *G. morsitans* in dogs

Flies caught in an infected area, kept for some days, and then fed on healthy animals.

Trypanosoma brucei -- Glossina morsitans.

Expt.	Place.	Observer.	No. of flies fed.	No. of times flies fed.	No. of days before infection or under observation.	Result.
210.	Zululand.	Bruce.	5.	32.	64.	Negative.
242.	-do-	-do-	30.	11.	56.	-do-
232A.	-do-	-do-	50.	15.	34.	-do-

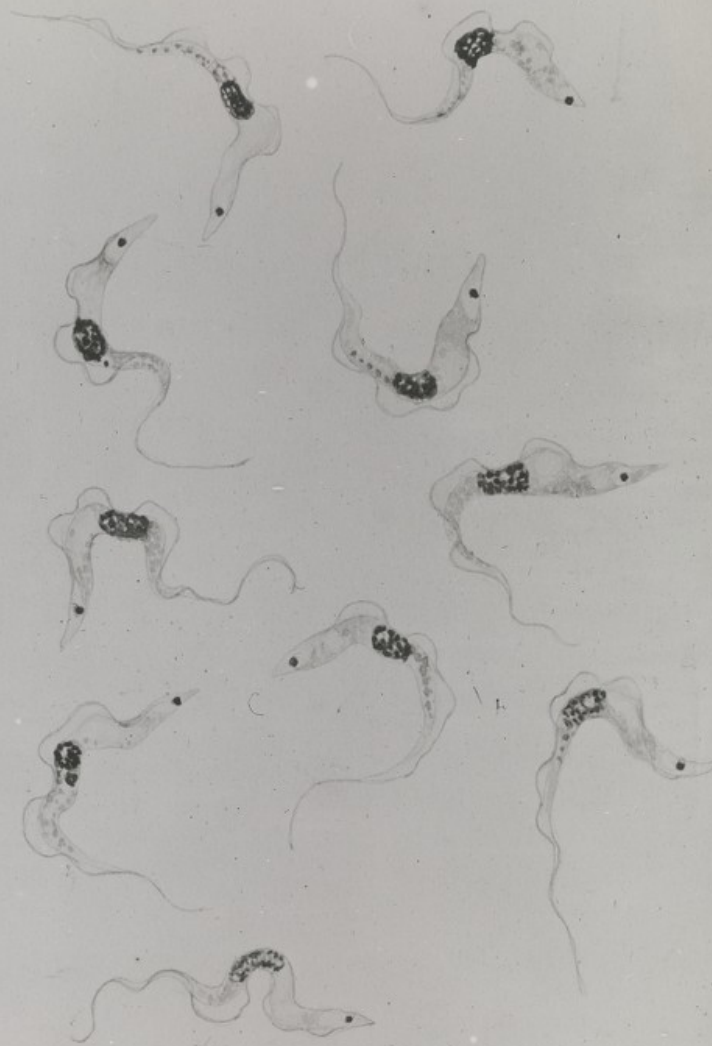
H. 245 The Cataract Hotel. Assuan.



H45. The Flotilla. upper mile



H. 47 T. Evansi - G. pig -



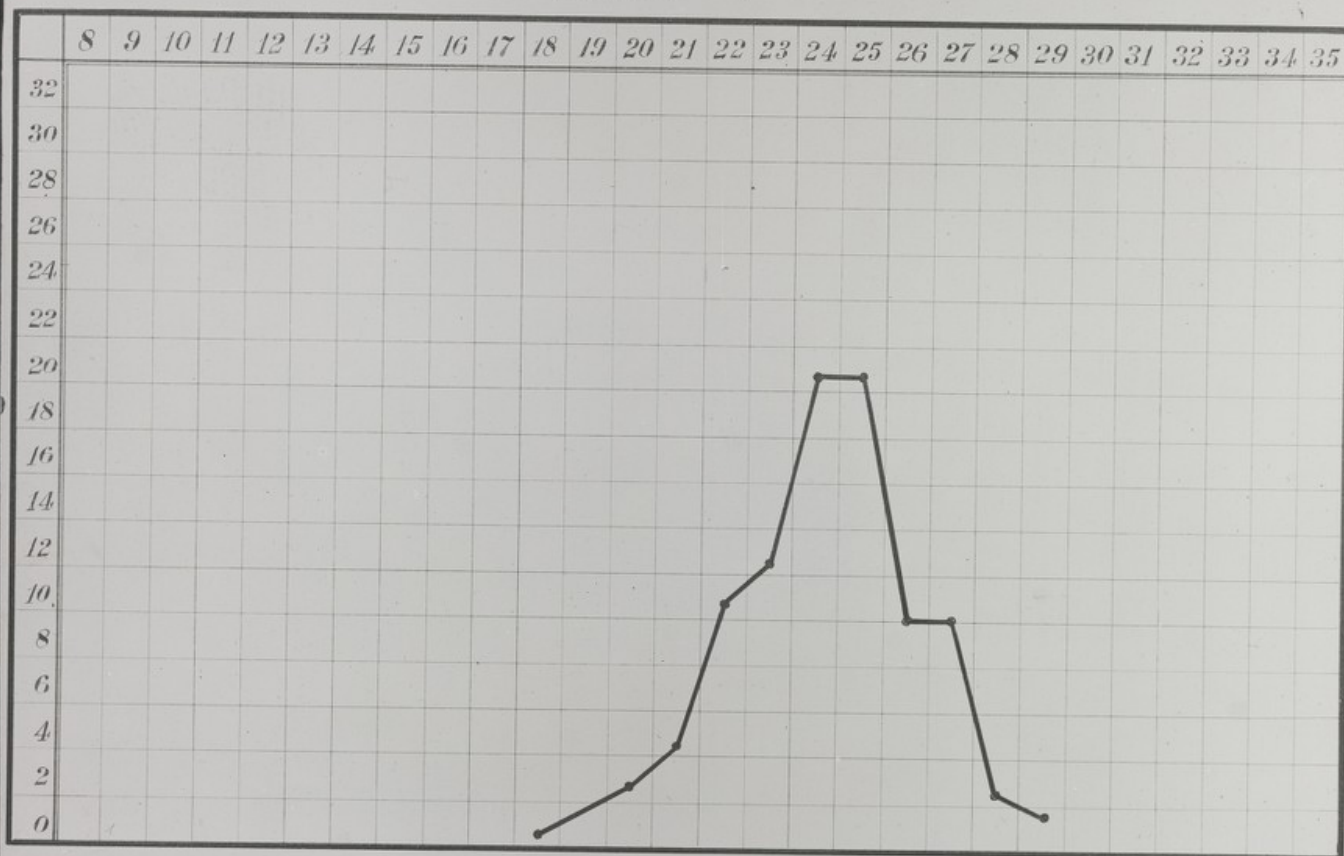
10 20 μ

T. Evansi. guinea pig.

H.48. *T. evansi* curve.

T. evansi.

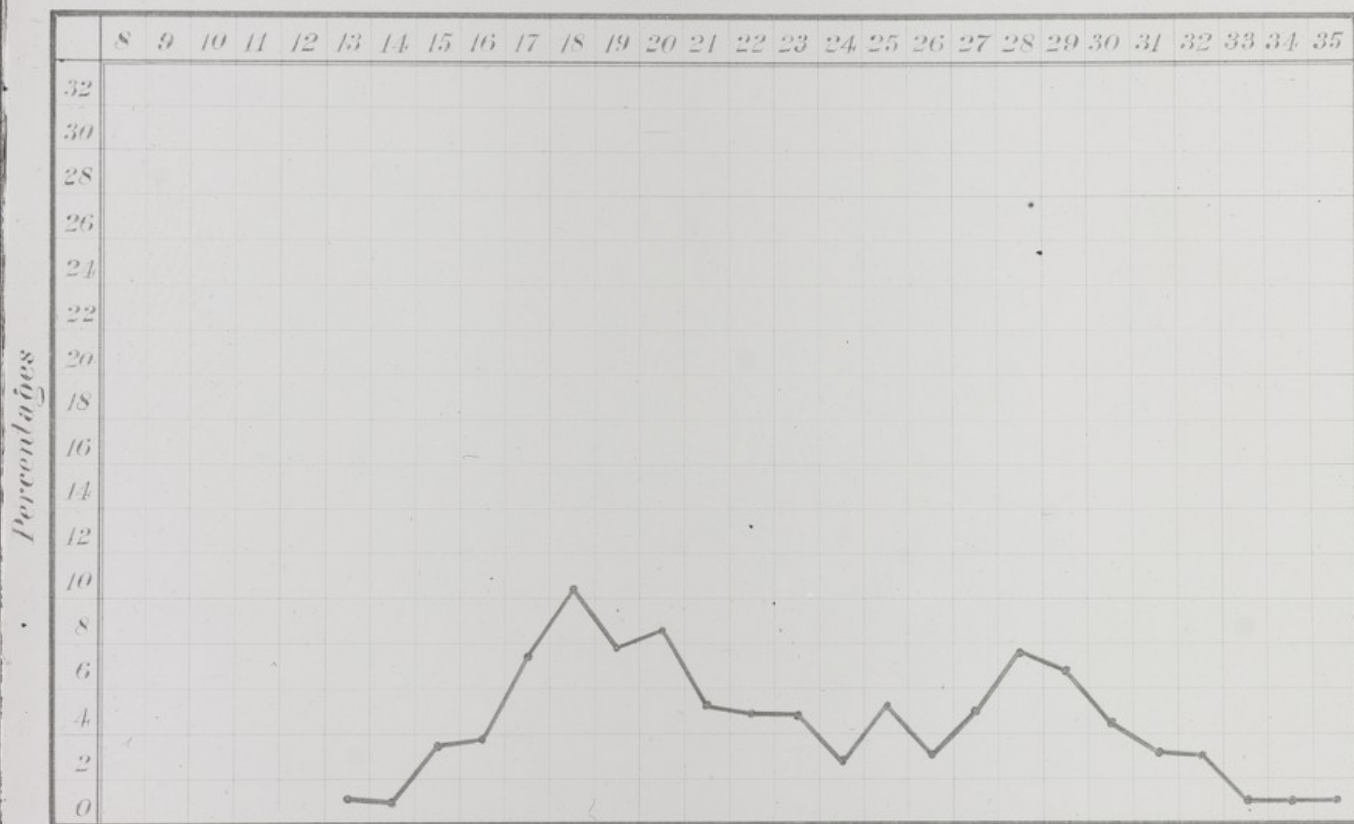
Microns



H. 49 T. brucei Curve 3 & 4

T. brucei combination of Zululand & Uganda 1909.

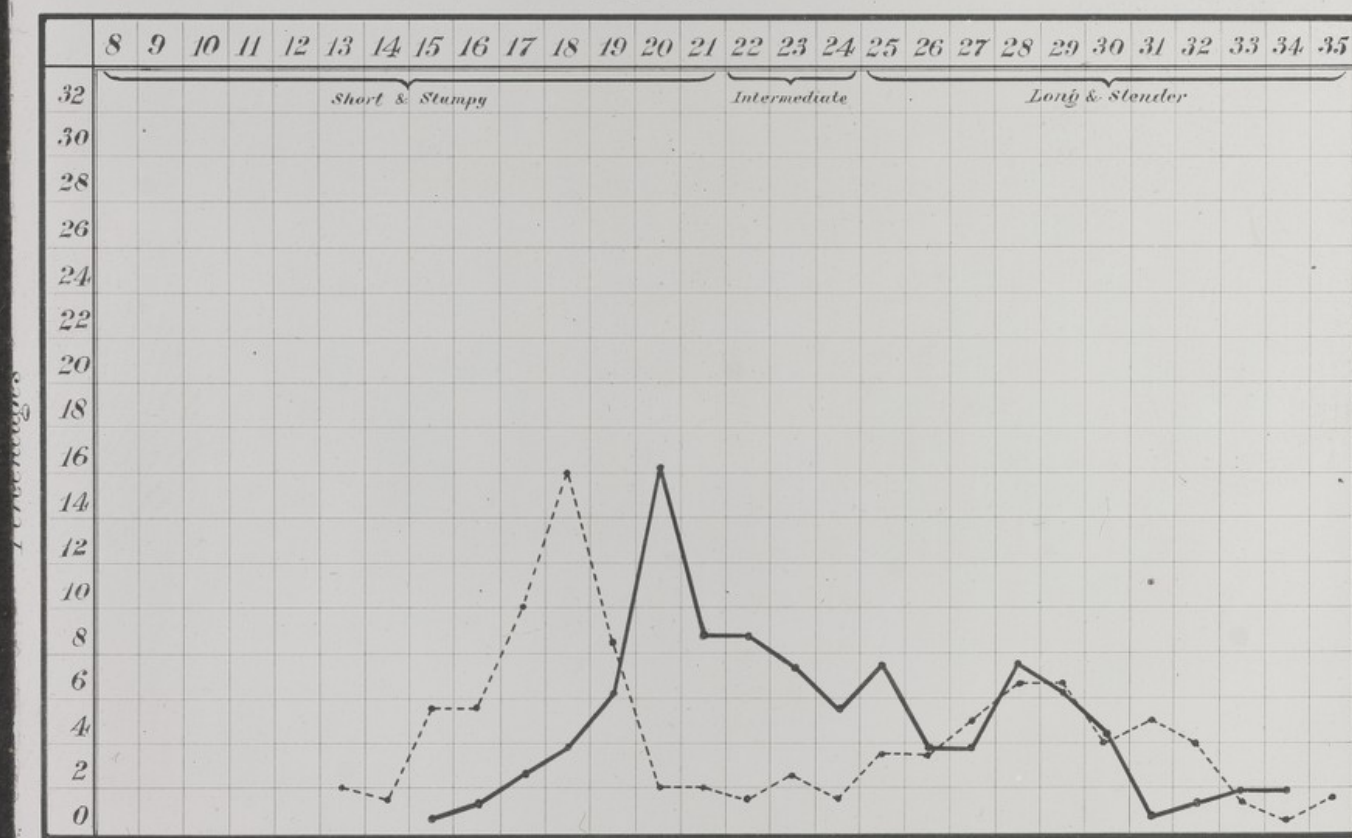
Microns



H 50 *T. brucei* curve -

T. brucei.

Microns



— Uganda 1909.
 ---- Zululand 1894.