

Receipt-Book, 19th century

Publication/Creation

mid-19th century

Persistent URL

<https://wellcomecollection.org/works/zpkgr53u>

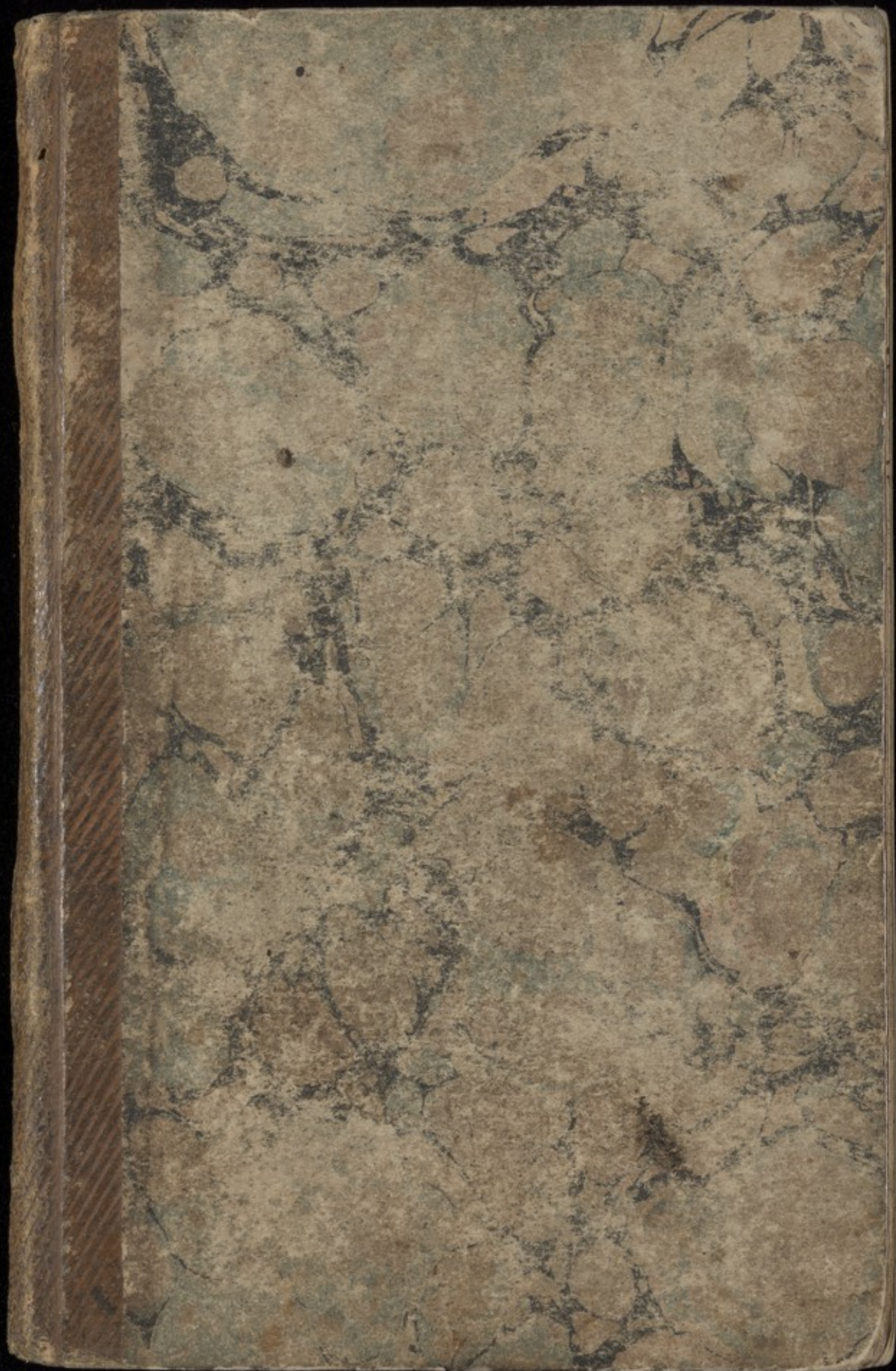
License and attribution

This work has been identified as being free of known restrictions under copyright law, including all related and neighbouring rights and is being made available under the Creative Commons, Public Domain Mark.

You can copy, modify, distribute and perform the work, even for commercial purposes, without asking permission.



Wellcome Collection
183 Euston Road
London NW1 2BE UK
T +44 (0)20 7611 8722
E library@wellcomecollection.org
<https://wellcomecollection.org>



317894

Soda water

Carbon. Soda gr^{ss} 40

Tartari acid gr^{ss} 30

Dipolue ʒj P. acid Tartari

in

→

Co

-

D

a

a

1

to

mut

1

Spa

Sp



MS. 4069

ACCESSION NUMBER

317894

PRESS MARK

Rheumatism

Spirits Tar ʒij

Turpentine ʒij

Nitre ʒij

ʒij

ʒij

ʒij

Butter

over Fluid

Black eye

aq ammon acetat
a quo Drops ext Saturn

Sicknes

Kali. purif \mathcal{g}^{ss} XXX

ammonia \mathcal{g}^{ss} XX

Nitri purif \mathcal{g}^{ss} X

Jucc. Linnou \mathcal{g}^{ss} ut Saturn

aq. pur. \mathcal{z} VI

Spt. Nucis Moch \mathcal{z} ss

Sunt cochl. ij ter in
die

violint Cold Jackson

Infus. Gentian C. \mathcal{z} xiiij

Tinct Calumba - \mathcal{z} ij

amm Carb: \mathcal{z} ij

cochl iij ter in die

pulv. alou Comp

Jalap a \mathcal{z} i

Ol. Carni \mathcal{g}^{ss} XV

Syr \mathcal{g}^{ss} pill XXX

capt. iij hora Somni

317894

Soda water

Carbon Soda gr^{ss} 40
 Tartaric acid gr^{ss} 30
 Dipolue ℥_{ss} P. acid Tartaric
 in aqua ℥_{ss} tunc adde
 ℥_{ij} P Soda carbon P I
 in ℥_{ss} aquae
 Drink during effervescence

Rt for Boot Top 5845

acid osalic ℥_{ss}
 acid muriatic ℥_{ss}
 1 Pint Old Milk

to
 make Lemon juice
 citric acid ℥_{ss}
 1 pint water

Asthma

Mel iij ℥_{ss}
 Balsam Sulp iij ℥_{ss}
 Sp Nitro 1 ℥_{ss} new
 1 Tea Spoonful

Rheumatism

Spirits Tar ℥_{ss} ii Beten
 Turpentine ℥_{ss} ii over Fluid
 Nitre ℥_{ss} i

Black eye

aq ammon acetat
aquo Drops ext Saturn

Sickness

Kali. purif \mathcal{g}^{ss} XXX

ammonia \mathcal{g}^{ss} XX

Nitri purif \mathcal{g}^{ss} X

Jucc. Linnou \mathcal{g}^{ss} ut Satur

aq. pur. \mathcal{z} VI

Spt. Nucis Mosch \mathcal{z} ss

Sunt cochl. ij ter in
die

volunt Cold Sickness

Infus. Gentian C. \mathcal{z} xiiij

Tinct Calumba - \mathcal{z} ij

amm Carb: \mathcal{z} ij

cochl. iij. ter in die

pulv. aloes Comp

Jalap a \mathcal{z} i

Ol. Carni \mathcal{g}^{ss} XV

Syr \mathcal{g}^{ss} pills XXX

capt. iij hora Somni

Stone

fibrous roots of the Lark
as many as will lay
on a shredle sig. & plate
to be boiled in 3 quart. of
water to 1 Quart

In a pint a dose
once or twice a day

Ol Cargoph -

Ol Bergamot

Ol Lavend leaves

Tinct mosch

Volat. sal amm

aq. ammon.

Smelling Bottle

Chemical Terms

New Names Former names

Acidum aceticum Acetum Distillatum

" ~~Muriat~~ Flores Benzoes

" Benzoe

" Muriat Spiritus Salis

" Sulphur Acidum Vitriolicum

" Nitricum Aqua fortis

" Carbonis fixo air

(Alkalis Citricum & Spiritus Salis)

Ammonia Carbonis Ammonia preparata

" Muriat Sal Ammoniacus

Aqu. Amm. Acet Spiritus Mindererus

Liquor Am. Carb. Spiritus Sal. Amm

Liquor Ammon. Aq. Ammonia pura

Potassa acetat Sal. Diureticus

" Super^{tar}trac Cream of Tartar

" Tartras Soluble Tartar

" Subcarbonat Salt of Tartar

" Sulphas Vitriolated Tartar

" Muriat Salt of Syloius

" Superoxal Salt of Lemons

" Sulphas Sal. Polychrest

" Nitras Salt petre

" Carbonas Vitriolated Kali

" Sulphuric Sulphuretted Kali

" Supersulphur Sal. enicum

" liquor Aqu. Cali puri

" Fusa Lapis infernalis

" cum calce Causticum commune

fortius

Chemical Terms

New names	Former names
-----------	--------------

(Alkalies & their Salts.)

Soda Tartarizata	Natron Tartarizatum or Sal Rochelle
" Sulphas.	Natron vitriolat- or Glauber's salt
" Subcarbonas	Natron prep.
" Carbonate	
" Boras	Borax
" Murias	Salt.
" Phosphas	Fasteliff's Salts

Earths & their Salts

Alumen Cassic ^m	Alumen Ustum
Calce	Calx viva
Aqua Calcis	Lime water
Sulphat of Lime	Paris plaster
" Aluminis & Potass	Alum
Barytes -	Spar
Creta prepara ^{ta}	Prepared Chalk
Magnesia Carbonat	Magnesia Alba
Carbonate of lime	Chalk or limestone

Chemical Terms

Earths and their Salts
New names Former Names

Magnesia calcin Magnesia usta

" Sulphas Epsom Salts

Sulphur totum Flores Sulphuris

Sulphur precipit Lac Sulphuris

Oleum Sulphuratum Balsam Sulphuris

Potassa Sulphurata Kali Sulphurata

Metals & their Salts

Antimonii Sulphur. Antimony

" Oxidum Crocus Antimonii

" Sulphurata Turpithis mineral
precipitata Kermes mineral

" Vitreus Oxyd Glass of Antimony

" Tartarizatum Emetic Tartar

Antimonialis pulvis Pulvis Antimonial

liquor Antimonii Tart Antimonial Wine

Antimonii Mercurias Butter of Antimony

Chemical Terms

New names former names
Metals & their Salts

Argentī Nitras Lunar Caustic

Arsenici Oxid white Arsenic

Arsenici Sulphuret Orpiment

Cuprum Ammon^m do

Liquor Cupri Amm Aqua Sappharin

Ferrum Ammoniat Flores martiales

Ferri Carbonas Ferri Rubigo

Ferri Sulphas Copperas

Ferrum Tartariz^m do

Tine. Ferri Amm Tine. Florum martia

" Ferri Muriat Tini. martis insp. Sac

Ferre Vinum Chalybeate wine

Cupri acetas Verdigris

Ferris Phosphae Prussian Blue

Phosphate of lime
& Antimony James's Powder

Chemical Terms

Metals and New names	Their Salts former names
Hydrargi Oxymur	Corros. Sublimate
" liquor "	Solution
" Sulphas flavus	Turpiths mineral
" cum Creta	Mercur. Alkali
" Suppurias	Calomelas
" Nitratu Rub.	Red Precipitate
" Oxid Cinereum	grey Oxid
" Oxid Rubrum	Red Lead
" Precip. Alba	Calx Hydr. alba
" Purificat	Argentum vivum
" Sulphur. Rub ^{et}	Vermilion or
" Sulphuretum	factitious Cinnabar
" or cum Sulp	Ethiops mineral
Liq ^o Plumbi acetat ^{is} aq.	Lithargi acetat
	or Goulards coct.
Plumbi Superacetat ^{is}	Cerussa Acetata
	or Sachar. Saturni
" Carbonas	Cerussa
" Oxyd Semi vitrum	Litharge
Calamina prepar ^a	do
Zinci Oxidum	Zinc. Calind.
" Sulphas	Zinc. Vitriolat ^{is}
	or white Vitriol

an excellent Remedy for
an inflam^d Sore Throat

Spermaceti ℥i.

Nitre — ℥ij.

Gum Guaiac. ℥ij. mix them
carefully with the yolk of an
egg then add

Aq. pur — ℥vii.

vin antimon gutt xv. 15.

Paregoric .. gutt 40

Typh. papav. ℥ij take

3 Table spoonfuls every
4 Hours

Remedy for Apoplexy

R Magnis. Sulph ℥i.

" Carb — ℥ij

Pulv. Gum Arab. ℥ij

Aq. Cinnam — ℥ij

Infus Senna ℥ii

fiat mistura cujus sumantur
duo vel tria coct. majora bis
die

R. Extract Colocynth ℥ij

pulvis antimon gr^{ss} viij

Calomel prep gr^{ss} x

Ol. Capiv gutt 10

fiat massa in pill xvi distribee
enda singulis noctibus sumen-
tur delecto Q. B.

(11)
Fevers

Febris intermittens

Remedy administered a gentle
emetic during the Cold stage

R. Pulvis Ipecacuanha 15 grs
Antimonium Tartarizat 11 grs
Then recourse is had to gentle
Purgatives.

R. Mistura Camphor ℥ xij.
Ammoniac 9^r ij
Vini Antimon gutt xij.
Syrup Simp. ℥ i

ft. Haustus semel a quaque
hora sumendus

should the fever run high

R. Succ. Limon. --- ℥ ss.
Kali Preparat. ℥ i.
aq. Menth. Sativ - ℥ i.
Antimon Tartar - gr 6
Syrup^{2da} --- ℥ ij.

ft. Haustus^{2da} quaque hora repetenda

when we obtain an intermission

R. Extract Cinchon 9^r xv
decoct ejusdem --- ℥ ss.
Tinct Cort. Aurant ℥ i.

ft. Haustus^{2da} hora sumendus

(2)
Fevers

Febris intermittens

R. Pulv. Cort. Cinchon ʒj.

Cog. in
Aq. font. t̄i ad t̄ps.

Colat. adde

Tinct. Serp. Virg.

Cardam. a. a ʒvi.

Capiat Coch. ij magna p̄ dos

Febris remittens.

Is produced by Marsh miasma

Symptoms) Preceding an attack

Patient is languid, with altern^t

fits of heat and Cold. after

severe pains in the head and

back, intense heat, thirst,

difficulty of breathing.

To allay the violence of the

fever

Take Pulv. Rhubarb ʒⁿ xv

Calomel - ʒⁿ v.

Tyrup. q. s. fiat pulv.

v. pro. dos.

Fevers 3

Synochos, simple continued
cause of this fever is application
of Cold to the body giving a
check to perspiration

Symptoms, languor or debility,
yawning & stretching, Countenance
pale, skin constricted, then
sensation of Cold in the back
afterwards, tremors in the
limbs, loss of appetite, pains
in the head, back & loins
frequent respiration, these are
succeeded by flushing, dry
skin & tongue, restlessness,
violent pain in the head,
oppression at the Chest, sickness
& inclination to vomit.
Thirst and costiveness, pulse
full, and frequent up to 90,
100 & 120, frequently
Delirium, symptoms increase
towards evening.

periods of termination are
3^d 5th 7th 9th 10th 11th 14th 17th & 20th
days -

bad symptoms, anxiety, loss of
strength, heat, stupor, irregular
pulse twittings of fingers & hands
startings of the tendons, hiccup
unvoluntary evacuations

4th
Febres. continued fever

good symptoms. Senses clear
febrile heat abates, skin soft
and moist, pulse moderate
& regular, urine deposits
flaky crystals

Regimen antiphlogisticum

Barley sago, Tapioca, Arrow
Beverage, Barley water,

linseed Tea, Toast & water,
milk whey & Lemonade

Remedium

Pulv. Ipecac gr^o xv.

Antimon Tartariz. gr^o i

aq. Mentha Sativ. ℥jss

tunc

Kali preparat ℥j.

Suc. Limon - ℥jss

Nitri purif. gr^o x.

aq. Fontan - ℥jss

Glycep Viol ℥j

fiat Haustus sumend. 3^{ia} quaq
hora.

Uel ~~Suc. Limon~~

aq. Ammon. Acet.

Cinnam. aa ℥jss.

Fontan - ℥j.

Vin. Antim. gutt xv

Spirit Ethere Nitros. ℥jss

Haustus Bica. quaq Hora sumend.

5.
Febres - simple Continud

If attended with a Cough

R. Levi Ceti - - - ʒij.
Vitel Ovi q. s ad Solut.
agu. Pulgii - ʒiv.
Oxymel Scil. ʒij.
Syr. Tolutan - ʒij
Mistura -

if a lux come on

R. Confec. Avom. ʒij.
aq. Cinnaui. - ʒi.
Tontan - ʒij.
mistura. Fine Catechu ʒij.
cupus sumat Cochl. ij magna
post singulos sedes liquida

Tea powder

Cream Tartar ʒiv.
Salt. Tartar ʒi.
Nitre - - - ʒ¹/₄
Valerian - ʒij.
Salap - - - ʒij.

a Tea Spoonful is a dose
for a Man every 2. 3. or 4
Hours.

Synocha or inflammatory fever

This fever is so named from symptoms denoting general inflammation of the system, by which we are able to distinguish it from the nervous and pituitous.

It makes its attack at all seasons of the year, but mostly in the Spring it Seizes Persons of all ages & habits, but more particularly those in the vigour of Life with strong elastic fibres, and of a plethoric constitution. It is peculiar to cold and temperate climates being rarely met with in warmer ones.

Febres. Synocha or inflam

Causis transitions from heat to cold, taking cold liquors when the body is heated, Intemperance, violent passions of the mind exposure to the rays of the Sun, the suppression of sudden evacuations & the sudden repulsion of eruptions

Symptoms. It comes on with a sense of lassitude, succeeded by vertigo, rigors, pains over the whole Body, but more partic.^r the head and back when followed by redness of the Face, throbbing of the temples restlessness, intense heat and unquenchable thirst, oppression of breathing & nausea, Skin is dry and parched, eyes inflamed and incapable of bearing the light, tongue of a scarlet colour at the sides and furrowed with white in the centre, urine Red and scanty, body costive, pulse quick & hard, pulsation from 90 to 130, if the febrile symptoms run high & means are not used stupor and delirium come on & the patient raves violently

7

Febres. Synocha or inflammatory
terminates critically in 4 Days
either by a diaphoresis, diarrhoea
hemorrhage from the nose
or a copious sediment in the
urine. bad symptoms - if
the fever runs high and
continues many days, with
stupor & delirium the event
is doubtful, if to these are
added, picking at the
Bed Clothes, starting of the
tendons, involuntary -
discharges by stool & urine
and Hiccups it will then
certainly be fatal.

Remedy Bleeding if the
Patient is strong
If the fever run high
apply Ether to the temples
Digitalis has also been
given with success

If nausea prevaile take
an emetic

℞ antimon. Tartariz $\mathfrak{ʒ} \text{ij}$
aq. fontan - $\mathfrak{z} \text{ij}$
Tyr. Caryoph $\mathfrak{ʒ} \text{ij}$

Febres Synocha or inflam

to prevent Costiveness take
a few grains of Calomel
made into Pills with a small
quantity of extract cathartic

or Pulp Tamarind ℥ss

Chryst. Tartar ℥ij

aq. Bullientes — ℥v

Colat adde ℥

aq. Cinnamon — ℥i

Antimon Tartarizat ʒ^ri

Sumat cochlearia in et repe-
tatur dos post horas duas

vel Infus. Sennæ ℥i ss

Magnes. Vitriolat ℥vi

Mannæ Optim. ℥ij.

fiat haustus aperiens

he may take likewise
refrigerants

R^t. Nitri purif. ℥ij.

Chrystal. Tartar ℥iij

Antimon. Tartariz. ʒ^ri ss

fiat pulvis dividend in

Chart. VI. Sumat i. tertia
hora.

if the pulse sinks, Camphor
Ether and ammonia will be a
proper and Cordials. also must
plaster to his feet

Febres. Typhus mitior

Causis. It may be induced by whatever impoverishes the blood, or depresses the mind, hence severe evacuations, great fatigue, low diet, excessive venery, intense study, a moist atmosphere, and unwholesome air may give rise to it. Tho. the most general cause is contagious.

Symptoms, Typhus mitior comes on with remarkable mildness, a slight chill face pale and sunk with debility, anxiety, dejection of spirits, sighing & loathing of food, in a few days difficulty of breathing, difficulty at the Chest confused Ideas, great depression of strength fainting, the tongue becomes dry, and covered with a dark brown fur.

10

Febres. Typhus mition

teeth are incrustid with the same, pulse low & frequent cold clammy sweats break out on the forehead and back of the hands tho the palms glow with heat the whole nervous system is affected with tremors and twitchings.

favourable symptoms if carried off by a gentle Diarrhea or gentle moisture diffused over the whole Body -
Bad symptoms.

profuse evacuations by sweating or purging, watchfulness, sinking of the pulse, Ideas incoherent, muttering, pulling of the bed Cloaths an involuntary discharge, starting of the tendons and heaving are the forerunners of Death. No Blood should be let.

Applying the body with cold water is one of the most efficacious means in the early stages of Typhus mild diaphoretics may be given in the beginning

11

Febres Typhus mitior

R. Succi Limon ℥ss.
Kati preparat. ℥j.
Aq. Cinnam ℥j.
Confect Arum q. xv.
Syrup Zingib. ℥ij.
Haustus ~~4~~ ^{tes} horis sumend
vel

Mistura Camphorat. ℥x
aq. Ammoniacetate ℥ij.
Spiritus Ether Nitros. ℥ss
fiat Haustus 3. ^{tra} hora
cupiendus.

If a purging arises it is
to be stopped by astringents

R. Mistura cretae. ℥lv.
Tinct. Catechu. ℥ij.
Aq. Cinnam
Spiritus Pimento. aq ℥l.
Tinct. Opii gutt xl.
mistura cyus Casiat Coch. ℥j.
magpa tertia quag hora
if delirium ensue for want
of sleep R. ℥.
aq. ammon Acet. ℥ij.
Cinnam - - ℥i.
Tinct Opii gutt xl.
Syrup Zingib. - ℥ij
fiat Haustus

(121)
Febres. Typhus gravior

Is distinguished from the inflammatory by the sudden & great debility, brown & black tongue, fetid sordes about the teeth, livid flesh of the countenance, intense heat of the skin, in its advanced stage by Petechiae or purple spots & fetid stools.

General cause is contagion, or it may be occasioned by effluvia from animal or vegetable substances in a decayed or putrid state hence it is prevalent in marshy Countries when intense quickly succeeds inundation, want of proper cleanliness & confined air a close state of the atmosphere those of lax fibres & who have been weakened by weak diet, long fasting, hard labour, want of sleep, are most liable to attacks of it

Symptoms, on the first. the patient is seized with languor, dejection of spirits, amazing depression & loss of muscular strength universal weakness & soreness pain in the Head, back &

Feveres Typhus¹³ gravior

and extremities & rigors,
the eyes are full & heavy,
temporal arteries throbb
violently, respiration is
laborious, breath is hot &
offensive, urine crude &
pale, pulse small & hard
and fluttering, great heat
and pain at the pit of the
Stomach, as the disease
advances, pulse increases
from 100 to 130, there
is vast Debility, great heat
only rep in the Skin, anxiety
sighing & moaning, the
tongue, mouth, lips & teeth are
covered with a black fur
The patient mutters much
& Delirium ensues, as
the fever increases, symp-
toms of putrefaction appear
breath becomes highly offensive
stools are black, hemorrhages
issue from the gums, nostrils
mouth &c, livid spots
appear on the surface, pulse
sinks hiccups issue, extremities
grow cold & Death closes the scene.

Febres Typhus ¹⁴gravior

Remedy most proper at first
will be an emetic and after
the Bowels may be opened with
some gentle Lascative

R. Kali. Tartarizat. ℥iij.
Manna optima ℥ij.
Aq. fervent. ℥iij.
Cinnam. ℥ss.

Capiat dividuum pro dos.

velf Calomel. gr. v.

Extract Colocynth. C. gr. iij.

fiat pilula No 3 pro dos

cold affusion is also very
beneficial in the early stages.

twice a day then wiped dry,

anoplate at night, & his strength
supported with wine.

then for an adult 10 or 12 Drops
of muriatic acid guarded with
5 drops of Laudanum as a vehicle

℥ss. of an infusion of Columbo

This to be repeated every 4 hours.

gradually increasing the quantity
of acid to 18 Drops. the effects of

The muriatic acid in all febrile
diseases of the malignant kind

are truly great. when the

fever is arriv'd at a crisis, a
gentle moisture should be

promoted by some gentle
Diaphoretic

Febres (15) Typh. grav

R^t Camphor grⁿ. iv.
pulo. Ipecac grⁿ iij.
Confect. Arom. ℥j.

℥t. Bolus 6th hora sument
or Spirit Ether. given
with antimonials
when hemorrhages ensue
and petechiae appear on
the Body, we should have
recourse to the most power-
ful antiseptics, cold
affusion and Bark.

R^t pulo. Cinchona ℥ss.
Tinct. ejusdem ℥ij.
aq. Cinnamon ℥i ss.
Tinct. Opii gutt viij.
Acid murcat gutt viij.

pro haustu secunda vel
tertia quaque hora sument
or yeast

Take add 2 Table spoonfuls
to a quart of malt liquor
or Porter, take a wine
glass full very frequently

In Typhus it is necessary to
procure Rest, for wh give
an opiate combined with some
Diaphoretic R^t
aq. ammon acet ℥ij.
Germam ℥ss.
Tinc. Opii gutt xl.
Syrup Zingib ℥ij.

Febres (16 Typ^s grav^o)

if there be an extreme lax
it ought to be stopped by
astringents

R^c. Tinct Catechu ʒi.

aq. Cinnam

" Pimento aa ʒjss.

" Tontan. — ʒij.

" Opii. q^{ss} I.

ʒ^t mistura cujus sumat
cochl. ij. magna 4^{tes} horis
the patient should be
removed to the most remote
part of the House, his bed
Linen changed frequently,
his body kept clean, his
chamber well ventilated &
sprinkled frequently with
warm vinegar, attendants
must carefully avoid in-
haling the vapour arising
from the patients Body
& those near him should keep
a sponge or handkerchief
moistened in camphorated
Spirits or vinegar to the
nose or mouth

Phleg. (17) masia

Inflammation is of 2 kinds
(viz) the phlegmonous &
erysipetalous, by phlegmonous
is understood an inflamma-
tory affusion of the skin and
cellular membrane with a
swelling rather prominent in
the centre of a bright red color
attended with pain & disten-
sion and is usually converted
into pus.

By the erysipetulous is implied
an inflammation confined to
the skin when seated outwardly
& to the mucous membrane
when inwardly, with hardly
any evident swelling, a mis-
red colour, disappearing on
pressure but returning again
spreading unequally with
pain like unto burning,
which gives rise to an eruption
of small Blisters, which
minutely in a desquamation
of the scurf skin, now & then
a gangrene, but never
in suppuration.

Phlegm (181 on)

Persons in the prime of Life
are subject to Phlegm those
in the decline of Life to
Croup

Remedy When the pain is so
violent as to deprive the patient
of Rest 50 or 60 Drops of

Tinctura opii may be given
to an adult: and as a sedative
apply a Bread Poultice
or pieces of soft linen dipp'd in

aq. Ammon Acetat

Spirit vinica $\frac{z}{l}$

and if the fever runs
high

take Nitro purif $\frac{z}{ss}$

aq. fervent $\frac{z}{viii}$

Antim Tartar $\frac{gr}{ii}$

Syr. Vicia $\frac{z}{ij}$

Mistura cyus signat
cochlear magn. \frac{ij} pro dos

if notwithstanding this the
tumour should have a ten-
dency to suppurate then
apply a poultice of linseed
bustard & boiled in milk &
water, previous to what

Phlegm 19 on

The part affected should
be rubbed with flannels
wrung out of a warm
cocture of

Flor. Camemel
fol. Altheda ʒi
Papav. Alba essec. ʒj
aq. fervens ʒiiv .

to promote proper pers.
give Peruvia Bark
and in case of Gangren
give a Bolus consisting
of 10 grains of Musk
& the same quantity of
Ammoniac every 3 Hours
& to check the offensive
stench, sprinkle the dis-
eased parts with Nitre
pulveriz'd very fine.

if the tumour be confin'd
to a gland & have a
tendency to become scir-
rhous rub in morning
& night ung. Hydrarg.
purgis & ung. Cera cybal
quantities & with a little
camphor

Erysip 20 etas

when the inflammation is confined to the Skin is called Erythema but when the System is affected it is named Erysipelas if the attack is severe, there will be pains in the head & back, great thirst and restlessness and about the fourth Day a number vesicles containing a limpid and in some cases a yellowish fluid will arise on the face, legs and feet. tho it may appear on any part of the Body -

Remedy - cooling purgatives diaphoretic medicines - gentle saline laxatives so as to procure a Stool twice a day as an outward application cloths dipped in Cold water or emollient fomentations, if there be a tendency to gangrene we should give Bark, mineral acids, Snake Root Camphor aromatic confectiou & wine, food should be light such as Rice, arrow Root and the like

Phrenetis or infl.ⁿ Brain

Is an inflammation of the parts contained in the cavity of the Cranium, and may affect the membranes of the Brain or the Brain itself. It is called Primary or Idiopathic when it exists independent of any other Disease & Symptomatic when in consequence of fever & inflammatory affection, the latter the most common, the other occurring but seldom. Its characteristics are a severe pain in the Head, redness of the Face and eyes, intolerance of light & sound, watchfulness, and violent delirium. Causes are such as directly stimulate the membranes, or increase the impetus of Blood to its vessels; hence violent fits of passion, intense study, excessive venery, severe exercise external violence, immoderate use of vinous & spirituous liquors & long exposure to the sun

Phrenitis 22.

The Idiopathic is preceded by constant watching, frightful dreams, acute pains in the neck and occiput, after extending to the head, want of recollection suppression of urine & irregular pulse as it advances, the eyes sparkle, ferocity in the countenance deafness, confusion of Ideas ravings, intolerance of light, & the most furious delirium tongue is dry, face red, & pulse quick & hard. Bad symptoms are grinding of the teeth, white faces, starting of the tendons, convulsions, cold sweats, fluttering pulse & coma denote a fatal termination, on the contrary a hemorrhage from the nose, mouth or lungs, or urinary or hemorrhoidal vessels, or diarrhoea, sleep perspiration faint & deafness denominated there is hope.

Remedy. Copious Bleeding either by the lancet or leeches in the temples, next step to shave the head and apply a Blister to it, linen cloths dipt in vinegar & water or iced water may be constantly applied to the temples.

Phrenetis ²³ contin'd

afterwards a strong purg.

R Calomel gr̄. ℥ij.

Extract Colocynth gr̄. vj.
fiant pillule fiant ℥ij
pro dos

Symptomatic Phrenetis
does not require active pur-
gatives, and the patient
may take in both this

and Idiophatus a diapho-
retic Bolus every 3 Hours
washing it down with
or 3 Table spoonfuls of
some febrifuge mixture

Bolus Camphor ℥v. gr̄s
Pulvis antimonalis ℥ij gr̄s
Conserve Rose q. s.

Mistura

Succ. Limon ℥i ss
Ammoniac ʒv℥ss
aq. Ment. sativ. ℥i
Fontan - ℥iv.
Nitri purif ʒi
Syrup. Rosa ʒij.

Food preparations of Barley
Taro &c

24
Ophthalmia

First Remedy Topical Bleed
then an active purgative
a few grains of Calomel & Jalap
or a solution of neutral Salts
to abate the inflammation
make use of the following
wash

R^t Zinc Vitriolat.

Cesup^o Acetat a. a g^r viij.

aq^a - vi. ℥ -

Collyrium

when the eyes are glued together
apply every night to the eyelids

Tutia prepar ʒi.

Unguent Sperm ʒi.

in purulent Ophthalmia make
a Collyrium of

aq^a Cupri vitriolat

Camphorat. a a ʒij.

Distillat ℥ vi.

when Spuks have ensued in
consequence of inflammation
apply a Collyrium as follows

Hydrargⁱ muriat. g^r ij.

ammon. muriat g^r v.

aq. fontana ℥ vi.

in acute inflammations the best
is Cupri vitriolat

aq^a Bol. Armenia a a g^r viij.

Bull. vit. camphora g^r ii.

Otitis inflamⁿ. of the ear

Local Remedies are necessary except Cathartics, applications of Blisters behind the ear & warmth are the most to be relied on

ear ache sometimes continues, without any inflammation & is removed by filling the ear with tincture of Opium or ether, or vice warm oil or warm water, or ether may be applied to the Cheek or the parts behind the ear may be rubbed with camphorated oil

*Tine Castor
Sweet Oil & Laudan
equal Quantities*

Cynanche Tonsillaric
in this complaint, the inflammation principally occupies the glands such as the Tonsels but it often extends thro the whole mucous membrane of the Fauces, so as to interrupt the Speech, respiration and deglutition of the patient, the chief danger arising from this species of Quinsy is suffocation

26 son throat

Cynanche Tonsillaris or inflam^{ry}!

at the commencement, an emetic often proves useful, also gentle evacuation from the intestines occasionally such as saline cathartics, or calomel with Jalap. and where the inflammation is considerable, place a Blister round the throat or at the back of the neck; but in slight cases rub the parts twice or thrice a day, with linimentum camphora vel ammoniac, putting flannel on the outside, it is of service to wash the mouth frequently with astringent gargles

R. conserve Ros. ℥i ss. or Fine Castor
aq. Bullent ℥℥ ss. Sweet Oil
acid Sulphuræ ℥i. & Laudanum
Gargarismus

Diaphoretis may also be used & in order to excite vomiting, the patient may receive thro an inhaler, steams arising from warm water to which add a quantity of Ether, the stimulus will prove so great as to succeed in many cases where suppuration is nearly comple^{ted}

Cynanche ²⁷ Parotidea

It is distinguished by an external movable swelling mostly on both sides the neck, the tumours occupy the maxillary & parotid glands frequently so much as to impede respiration & deglutition, swelling generally increases while the 4th day, after that period it declines - Remedy, is to keep the head warm & avoid cold & open the Bowels by cooling Cascatives R^t

kali nitrate ʒi.
Antimon Tartariz grs ij.
et in chartulas vi. divide
sumat unam quartam horis

The great danger is in the tumour disappearing suddenly - so as to affect the brain we should reproduce the swelling by stimulant liniments

R^t Liniment Ammon. ʒi.
Tinct Cantharid ʒss
oil Camphorat Spirit ʒi
agu ammonia ʒij
Tinct. Cantharid ʒss

Cynanche²⁸ Maligna

It usually makes its attack with cold shiverings, anxiety, nausea & vomiting succeeded by heat, restlessness, thirst debility, & oppression at the Chest, face flushed, eyes red & stuffy in the neck, hoarseness, & sonness in the throat, & on viewing the internal fauces, there is a fiery redness in every part, after a short time on inspection into the throat there appears a number of sloughs of a shade between ash & dark brown colour, the breath is offensive & tongue with a thick brown fur, the inside the lips is beset with vesicles containing an acrid matter which falling on the mouth occasions excoriations, a purging often attends also with general loss of strength about the 2nd or 3rd day, large patches of a dark red color appear about the Face & neck - as the sloughs spread they generally become of a darker hue even purple - in the worst cases the fauces appear quite black the sloughs corrode deep & deeper & spread thro the whole alimentary canal so as to terminate in gangrene & a severe purging being the patient is cut off

Cynanche²⁹ Maligna

when there is a great increase of fever with vast debility, irregularity of pulse, much fetor of breath with a livid appearance in the ulcers, a purging Ptechia or hemorrhage the Disease will terminate fatally but when the pulse becomes stronger, respiration freer, skin moist & a florid colour returns to the fauces we may expect a favourable termination.

at the commencement a gentle emetic is requisite, the grand object is antiseptics

Infus 2 Table spoonfuls of Cayenne pepper & a Tea spoonful of Salt in half a pint of boiling water, adding thereto the same quantity of ~~boiling~~ ^{warm} vinegar after standing 1 Hour strain the liquor off, & give 2 Table Spoonfuls every Half Hour & to assist this give from ʒ to a Drachm of Peruvian Bark every 2 Hours joined with a little mucratie acid, & to check the septic tendency wash out the fauces with the following gargle

30

Cynanche maligna

R. decoct. Cinchonae ℥vi
 acid. muriat. ℥i.
 Tinct. aromat. ℥ss
 Myrrh ℥i.

Gargaris mus
 after inhale the steams from warm
 vinegar & water & as a substitute
 for inhaling Oxygen Gas
 close the windows & doors of the
 Patients apartment & take a
 chafin Dish with some live
 Coals, throw into it half an ounce
 of purified nitre in powder
 which will fill the room with a
 thick white cloud, this should
 be frequently repeated in the
 course of the Day, if there is a
 considerable fulgine some Dia-
 phoretic medicine

R. mistur. Camphorat ℥ij.
 Confectio aromat. ℥ss
 vin. Antimon. gutt. xv.
 aqu. Cinnamon ℥ij. tea
 capt. cochlear. magnum 3

quaque hora
 should occur arise it should be
 stopped R +

confic. aromatic ℥i.
 mist. terre cretae. ℥ij.
 aqu. Cinnamon ℥i.
 Tinct. Opii gutt. 30
 Catechu - ℥i. — gumat coch
 magna duo quartis horis
 the Capsicum medicine should be
 taken as a presentative

Croup or Cynanche Trachealis

Symptoms, child appears
drowsy and fretful; eyes
heavy, there is a cough of
a very shrill sound, every fit
agitates the patient, face is
swelled, a general tremor takes
place, & a kind of convulsion
endeavour to renew respiration
at the close of every fit,
inspiration is performed with
a hissing noise, the Croup
frequently proves fatal by
suffocation, Remedy, Blood
& other antiphlogistic remedies
in the early stages vomiting

R. Antimon Tartaris. gr^{ss} ij
aq. Pura. ℥ ij
Oxymull Scell. ℥ ss
cap^t cochlear. i minimum
Subinde ad vomit promovend
if Body is costive
Calomel gr^{ss} iij
Pulv. Jalap ʒv gr^{ss}

and as a Pectoral

Lac ammon. ℥ ss
Oxym Scell. ℥ i ss
vin. antem - xv gutt
Tine. Opie Cam ʒ ss
sumendus Haustus ter die

32
Pleurisy

It is an inflammation of the membrane lining the lungs attended with acute pain in the side, impeded respiration fever, & a full, quick, hard pulse
Remedy - copious bleedings at an early period, digitalis may also be employed with advantage, to allay the pain & take of the inflammation internally, apply a large Blister over the Part affected, & to avoid stranguary drink plenty fully of Barley water mixed with gum Arabic. Nitro as a refrigerant may also be given in dose of ʒij repeated every 3 Hours and to prevent costiveness gently laxatives may be given. Diaphoretics are highly useful in the first stages R^t

aq. ammonia aect.
Cinnamon - aa ʒss
Tortur - ʒi.
Vin Antimon quate xv.
Spirit Ether nitroxi ʒss
Haustus 3^{ta} quaq Flora stimendus
& to promote a free ex pectoration
R^t Ol. Amygdal dulce ʒi.
Syrup Althaeo - ʒij.
mucilag gum ʒi.
aq fontan - ʒij
ammon - ʒss.
mixture cuius sumat Coch. 2
tess urgente

Peripneue. 33 money

is an inflammation of the lungs denoted by difficulty of Breathing pain in the Chest Cough a full pulse white tongue & high colored urine it proceeds from cold or playing on wind instruments. a great degree of fever & delirium, much difficulty in breathing, dry cough expectoration of a dark black colour sudden cessation of pain change of countenance denote great danger, on the contrary an abatement of the febrile symptoms, free expectoration hemorrhage from the nose diarrhoea or diaphoresis promises fair for recovery

Remedy, to diminish the action of the heart & arteries we may administer 15 drops of tinc.

digitalis every 4 Hours. & apply a blister to the part affected and to promote expectoration

R Gum ammon ʒi. solve in aq. Pulg. ʒiv et adde acet Scilla ʒiii.

Syrup Solutan ʒss mistura cochlear ii pro dos.

vel
Ol. amygdal dulc
Syrup Solutan aa ʒi.
Spermacete gum Arabicum ʒij
Conserv. Cyrosbat ʒss
unctus de quo aqer benbat

Perip - 34 neuromy

To assist expectoration give
Antimonials in small doses
taking care not to excite vomit.

R. Pulvis Antimonial. gr. ij.
Conserv. Rosa gr. xii.

fiat Bolus 3^{ta} hora sumend
vel

Antimon Tartarizat gr. ij
aque Fontan $\frac{3}{4}$ viij ss

Syrup Rosa $\frac{3}{4}$ ss.

mistura eius cap. Cochl. mag
ij. 3^{ta} quaque hora

Nitre & some other neutral Salts
will also have a good effect
aque Ammon acetat. ʒ iij
Rosa - - ʒ x.

Nitre purificat gr. vi.

Vin antimon. gutt x.

Syrup Althea ʒ i.

ʒ Haustus 4^{tes} horis sumendus
no violent purgatives, ⁶⁰⁺ gentle
in an advanced stage of the com-
plaint opiates will be useful
when the cough is troublesome

R. aq. ammon acetat ʒ iij
menth sativ ʒ i.

Tinct. Opii gutt. Ix.

Syrup Tolut - ʒ iij

Vin. antimon gutt xx.

Haustus sumendus hora somni
Food must be light.

Enteritis or 35 Inflammⁿ Intus

It differs from Colic by this —
it is accompanied with fever
a quick small pulse, the pain
is increased on pressure. pain
is acute extending over the whole
abdomen especially round the
navel, sickness at the stomach
& vomiting of bilious matter
constiveness — Remedy. copious
bleeding after that a
purgative R.

Ol. Ricini $\frac{3}{4}$ i.

aq. mentha $\frac{3}{4}$ ss.

Tinct Jalap $\frac{3}{4}$ ss. Haustus

The warm bath will be proper
a blister may also be applied
to the abdomen, food
must be of the most mild
decent nature, such as
Barley water, Beef Tea &
Chicken broth, Opiates are
given by some, but when
given should be joined with
some aperient R.

Calomel $\frac{gr. v.$

Extract Colocynth c. $gr. iv.$

Opii — — — — — $gr. i.$

fiant pill 2 pro dos

cold water either by wet cloths
or dashing it from a pail
on the belly has often succeeded

Hepatitis or inflamⁿ of the Liver

Comes on with chilliness pre-
ceding pain, extending to the
clavicle & shoulder, is increased
by pressing on the part, attended
with cough, and difficulty of
lying except on the side affected.
The skin and eyes become tinged
of a deep yellow. Hepatitis may
end in resolution, suppuration &
gangrene, intense pain & fever
continued, severe rigors & flushings,
 hectic fever denote suppuration
 continual hiccup, cold extremities &
 sinking pulse denote gangrene
 Remedies. Bleeding after
 that a Cathartic

R. Infus. sereno ℥i ss
Magnesia vitriolata ℥iij
Tinct. Sereno & Syrup Rose
aa ℥j. Haustus - after a large
Blister over the region of the liver
then Haust T. Soli. ℥i ss
Nitri purif. ℥ss
Antimon Tartariz. gr. i
Syrup Althed. ℥iij. Haustus

Mercury is sometimes used by
rubbing a small quantity on the
side affected & taking internally

R. A Calomel - - ℥i
Opii purif - - ℥j
Antimon Tartariz. gr. v.
Syrup Simp ℥ss. m. a. in
Pillul ℥x. i sumenda mane
& quotidie

37

Nephritis or inflamⁿ of Kidneys

Is attended with a sharp pain on the affected side extending to the ureter, a frequent desire to make urine, with difficulty in passing it, body is costive skin dry & hot, feels great pain in walking upright.

Topical bleeding is proper must drink Barley water, linseed or marshmallow Tea &

then take Manna optem ℥vj
Kali Tartariz ℥ij
aq fervent ℥ij
Tinct Turm - ℥i. Haustus
mild diaphoretics

one of the best medicines is the uva ursi which may be given in doses of half a Drachm or a drachm 3 times a day, always keeping the body open also use the balsam Capaiba —

R. *gravel*

℥ij. Uva Ursi ℥i
divide in chartulas xv ℥ij.
sumat ex quovis vehiculo
ter de die, & superbibendo
℥ij aq Calcis simp cum
dimidia proportione lactis
recentis leprali cammista

38
Arthritis or Gout

Is preceded by an unusual
coldness of the extremities,
& numbness, a sense of pricking
along the whole extremities, this
is followed by a violent pain in the
great toe, heel, or calf of the leg
in inflammation give those
medicines wh have the power of
determining to the surface

R^t Pulv. antimoniae gr^{ss} ii
 annonioid gr^{ss} viij
 conserv Rosae q. s. fiat

Bolus 3^{tes} vic q^{ta} hora sumend
vel Juice. Limon ʒss
 annonioid q. s. Jod satur
 aq. pure ʒvi.

vin. antimon. gutt XII
Syrup Cort Aurant ʒi fiat
fractur.

after to strengthen the Stomach
R^t Infus Rad. Colomb ʒiv.

Tinct. cort. Peruv.
 Cardam. aa ʒss
mistura cujus semat Cochlear
ii magna 3 times a day
to avoid costiveness R^t

Elect. senna ʒii
Pulv. Rhei ʒii
 Jalap ʒi.

Ol. Camii - gutt. v. ft electu
Syrup Zingib q. s. ft electu
apum cap + magnitud juglandu
pro re nata, and to drive it
from the heart R^t

mistura camphor. ʒi
 Syrup. ʒi
 Annion. ʒi
Ether gut. Tinct opii gutt XII

Rheum 39 matism

when the pain is confined
to one part, apply to it

Liment d'apou ℥ii.

aq. ammoniac

Tinct. Cantharid

Opii aa. ℥ij -

Diaphoretic may be given

R. Succ. Limon ℥ij

ammoniac ℥i.

aq. fontan. ℥iv

Nitre purif. ℥j

Syrup Althea ℥j mistur
vel?

mister Camphorat ℥i.

aq. ammoniac - ℥iij.

vin. antimon gutt xx.

Haustus 3 vel 4 la hora sumu.

in chronic Rheumatism

R. Tinct. Guaiac. Vol. ℥ij.

Spirit. Cannam ℥j

aq. Fontan. ℥i.

vin. antimon. gutt xx.

fiat Haustus 3 die sumenda

and to promote rest

R. at Bed time

aq. ammoniac ℥iij.

Cannam - ℥i.

Tinct. opii - gutt XL

vin. antimoniac XXXV

Amidum alium

Pulv. Rhil. ℥j

Guaiac. ℥i.

Nitre ℥j

Sulphur de 1

Sinapi de 1 a Tea

Spoonful to be taken in a glass
of water on going to bed

Cowpox 40 at a eruption. fever
Varicella or Chicken Pox.....

differs from the small pox
by the largeness of the Pustules
and arrives at maturity earlier
in 3 days. use a spare
regimen of patient take small
Doses of antimonials, Saline
draughts & nitre as advised under
simple fever

Morbilli or Measles

is a species of Catarrhal fever
in which there is a determination
of acrid matter to the surface of the
Body showing itself in red spots
over every part of it, with red-
ness of the face & eyes, an effusion
of tears, swelling of the eyelids
& nausea, it is proper to keep
the Body open, & to relieve the
cough with some demulcent pectorals
as advised under the Pleurisy &
Pneumony & drink freely of
Barley water & Lingid Tea
acidulated with Lemon juice
also to take nitre and Saline
draughts with antimonials when
necessary to cause a determina-
tion to the Skin, a diligent
and antiphlogistic diet is also
the best means of reducing
inflammation

41

Morbilli or Measles

for an Adult

R^t aq. ammon. acid ʒj

Pure — ʒi.

Spirit Ether. nitros. gutt XX

vin. antimon gutt XXX

Tinct opii — gutt XL

Syrup Tolutan ʒij. Haustus

after the disappearance of the eruption, it will be proper to give one or two doses of some cooling purgative.

Scarlatina or Scarlet Fever

This disease takes its name from the colour of the Colour of the patients Skin wh^{ch} appears in various parts of the Body in broad red spots is very contagious, pulse is small & irregular, tongue, teeth & lips are covered with a black crust, breath is very fetid on the commencement of scarlatina mites & angina it is always proper to give an emetic of Ipecacuanha after vomiting give a gentle aperient R^t

Calomel grs. iij.
Pulv. Rhiz grs. vi.

Scarlatina anginosa

to determine gently to the surface of the Body give the saline medicine from time to time with small doses of some antimonial

℞ Haustus salinus
mistura camphorata ʒvi
antimon tartarizat ʒi
Syrup Cort aurantii ʒi
Fumendus quartis horis

linimentum ammoniac fortius may also be rubbed externally twice or three a Day

a blister may also be applied to the throat, but only at the beginning, sponging the Body with cold water is good in the inflammatory stage, where there is a disposition to putrescence Barkin decoction, substance or infusion must be given

Dr. Thomas's plan in Scarlatina ang is to give a decoction of Bark with an equal quantity of wine & a few drops of of muriatic acid and in 3 Hours after the draught of camphor and ammoniac & so alternately ℞.

Camphor — ʒi. solve in Alcohol ʒss
addde aq. pure
Cinnamoa ʒvi
ammoni prepar ʒv
Syrup Cort aurantii ʒi Haustus
fumigate with manganese, salt & Sulphuric acid

Pemphigus ⁴³ or vesicular eruption

This consists in eruptions over different parts of the Body which rise up in vesicles of the size of a nut

Having cleansed the Stomach by a gentle emetic &

dislodged the contents of the intestines by some mild Lascative, such as saline purgatives, or small doses of Calomel, we may then use Peruvian Bark, the mineral acids in a proper dilution to obviate the effects of debility in the early stages if the Skin is hot give the saline medicine with some mild antimonial to excite Diaphoresis, & to diminish irritation opiates combined with vitriolic ether when vesicles arise in the mouth so as to become ulcers we should employ gargles as under the head Cyranche Maligne and if eruption has extended to the alimentary canal give mucilaginous decoctions on recovery, the patients strength is to be restored by tonics

44
Urticaria on Nettle rash

proceeds from suppressed perspiration or by eating Fish of a deleterious nature, nettle rash generally gives way to a cool regimen & opening the body by mild laxatives, as crystals of tartar or neutral salts, having first taken an emetic

Epistaxis Hemorrhage from the nose

when this arises in a putrid disorder it is a fatal symptom In most disorders it proves salutary & should never be stopped except when it is so great as to produce fainting, then it should be stopped patient should be exposed to cool air & immerse his head in water impregnated with ammonia muriatica, snuff vinegar & water up the nose & throw by a syringe up the nose

Spemifera in pulv. ʒij
aq. Rosæ - ʒvi.
aceti distillat ʒi.

vel
Tinct ferri Muriat ʒi
aq. distillat - ʒvi.
when of a long duration
Acid Sulph dilut gutt xx
aq. fontane ʒij
Syrup Rosæ - ʒij
Tinct Opii gutt xx
Haustus semendus ter die

Hemoptysis⁴⁵ Spitting Blood

Spitting of blood may be occasioned by running, jumping, wrestling, singing, speaking loud also by wounds, plethora, coughs, irregular living, drinking or the suppression of some accustomed discharge. Remedy carefully avoid heat, exertion employ cooling purgatives as magna, phosphorated Soda
R. acid sulph dilut gutt XXX
aq. fontan ℥ij
Tinct Opii gutt XX
Syrup Rosæ ℥i. Haustus

where it does not proceed from plethora, but weakness give astringents R. t
aluminium gr. vii.

Terr catechu gr. x
Conserve Rosæ q. s. fiat Bolus
semendus quaque hora
vcl

Tinct Kina
Catechu aq ℥j
Opii - ℥ij. dos

Digitatis has prood effectual
in retarding Hemorrhage

R. Infus. Rosæ ℥ij
Tinct. Digitalis gutt XX
Opii - gutt x.

Haustus capiendus 6th horis

Hematemesis ⁴⁶ vomit. of Blood.

is distinguished from Hemoptysis by a sense of weight & pain in the region of the stomach & not being accompanied with cough. This disease may proceed from wounds, bruises, or inflammation in the stomach or of determining too great a flow of blood to it, or obstruction in the menstrual or hemorrhoidal flux. In moderate attacks make use of refrigerants together with small doses of opium, if these do not succeed, employ powerful astringents as in Hemoptysis. During the use of these take gentle laxatives as *oleum Ricini*. *Tinctura ferri muricatis* is an excellent remedy & may be given in doses from 20 to 30 drops in cold water every hour till the hemorrhage ceases. When it arises in putrid diseases powerful antiseptics must be given. Females from 18 to 30 after giving emmenagogues have been cured by copious saline evacuations by the exhibition of purgatives.

Menorrhagia 47 in mod. flow of the
menses

is immoderate, when more frequent than natural continues longer or is more abundant than of a lax habit have a more copious discharge than the robust, caused

1st a plethoric state

2nd accidental circumstances as dancing, strokes, strains & violent passions of the mind

3rd Straining at going to stool, except in venery, or cold & wet feet

4th Laxity of the organ from frequent child bearing tedious labors & miscarriages

5th Debility of the whole system a sedentary life, indulging in grief, and a long distemper symptoms when from plethora are head ache, giddiness, pains in the back & loins, thirst & heat when from debility, paleness of face, laxity of fibre, fatigue in exercise, the feet are often affected with swellings

Remedy when the disease arises from plethora, keep the Body open with laxative medicines that give but little stimulus

Menorrhagia 48 in flow of the men

R. Magnis. vitriolat ʒii
aq. fervent — ʒvi
Tinct. Senna. — ʒij
Syrup. Rosæ — ʒij.

cochlear largiv pro dos. sumenda
as la refrigerant

R. Kali preparat ʒi
Jucc. Limon — ʒij
Vitru purif — gr xv.
aq. fontan — ʒij
Syr. Viold. ʒij.

Haustus tertius Flora capiendus
when it arises in consequence
of laucity or debility, use refri-
gerants, linen cloths dipped in
vinegar & water constantly to the back
& pubes, this has a wonderful effect
then take as strengents

R. Ferr. Catechu gr. xii.
Alum. purificat gr. x.
Conserv. Rosæ q.s. Bolus

Injection
Zinc. vitriolat gr. xv
Corrupa acet. ʒi.
aq. distill lb i.

it will also be proper in the interval
to enter a course of tonic medicine

R. decoct. Cort Pirus. ʒij
Tinct. angustura ʒij
Caldamom aa ʒi

fiat haustus adde pro re nata
acid Sulphur dilut gutt xx.

to prepare the great menstruation wh
occurs at the time of Life when it
ought to cease, have recourse to
chalybeates, bitters, & opium, the
balls of which take a grain every
night with 5 grains of Rhubarb

Hæmorrhoids⁴⁹ Piles

Tumours where there is no discharge are called Blind Piles

R^t. Flor. Sulph. ʒi.
Elect. Senn. — ʒij.
Chrystal Tart. ʒij.

Syrup Rosæ q̄s electuarium
de quo sumat magnitud. Juglandis
pro re nata
vel

R^t. Pulvis Jalap ʒij
Sulphur Hydrarg. ʒiv.
Elect Senna — ʒi.
Flor. Sulph. — ʒi.

Syrup q̄s ut fiat electuarium
sumat magnitud. Juglandis
hora somni.

apply outwardly ungu. Sperm
ʒij Tinct. opii ʒi.

in a most violent case 35 drops
Tinct digitalis given evening
& morning has had a good effect
when there is a discharge of blood
it is called Bloody Piles

R^t then employ astringents

R. Pulv. Terra Catechu ʒviii
Alumini ʒss
fiat pulvis ter in die
sumendus

Catarhus (50) Catarrh

Is an increased secretion from the mucous membrane of the nose, throat and Bronchid attended with some slight fever. patient must drink mild mucicajinous liquors such as Barley water if there is difficulty of breathing use diaphoretics

R. aq. ammon acetat ʒj
 mistura camphorat ʒi.
 vin antimon gutt xxv
 Syrup Althid ʒii Haustu
 uel

Camphor gr. iv.

Pulv. antimon gr. ii

conserv. Rosae. q. s. sub Bolus

then administer Pectorals

R. Lact ammonia ʒvʒ.

Oxy mel Scill. ʒj

mistura cuius sumat cochlear

larg. ii 3 or 4 times a day

when the cough is troublesome attend with soups R.

mucilag. gum Arab. ʒv.

Ol. amygdal. ʒi.

Syrup Boluson. ʒj

aq. ammon ʒj mulco

cuius sumat cochlear magni i. dos

Persons advanced in years and sex may

have a catarrh with leucorrhoea habit

R Gum Myrrh ʒj solt in aq pur ʒj

adde Lac ammonia ʒiv.

Oxy mel Scill. ʒj

Tinct opii camphorat ʒi ʒi

capt. cochlear 1 amphem

Lac ammonia ʒv Oxy mel Scil. ʒj

Tinct. Digitalis gutt xxx 1 Coch

Dysenteria³⁷ Dysentery

is of a contagious nature in which there is an inflamⁿ of the mucous membrane of the intestines, griping pains, stools frequent small in quantity, mostly of mucus streaked with blood begin the cure by giving a gentle emetic in the evening.

Then a laxative R^t

Natra vitriolat. ℥i
mannæ optem ℥ss
aq ferventes — ℥ii
Cinnam — ℥ss. Haustus

then R^t

gem arab. ℥ii Solve in decoct Hordei ℥ss et adde Syrup Limon ℥ij: bebat pro potu ordinaria take an opiate at bedtime

R^t aq Cinnam ℥i
Spiritus Camphoræ ℥ss
Tinct opii gutt^{ss} xl

when all others remedies have failed acid Nitric ℥ii

Opii — gr^{ss} ii
aqu puræ ℥iiij. cap^t

cochlear. i minimum 3 die in the last stages take a strong

Confect opiat gr^{ss} x.
aq Cinnamon ℥ss
Tinct Kino ℥i.

Syrup Zingib 3ii Haustus

Clasp 2nd 52 Comata
Apoplexia Apoplexy

This disease consists in a sudden diminution of all the senses external & internal and all voluntary motion while the heart & lungs perform their action.

Cause is a compression of the brain produced by accumulation of blood in the vessels of the head or of serum from the exhalants. First object is to remove all compression from the neck, support the patient in an erect posture, & allow a free admission of cool air. Next bleed & apply leeches to the temples, then give an active purgative R. 4

Gum Gamboge gr. iij

tincto bene usum

Tinct. Sennae C. ʒi

Talap - ʒi. Haustus

vel

Calomel - - gr. vi

Extract Colocynth C. gr. x.

fiunt pilule iij pro dos
in serous apoplexy give
sternutatories such as

Pulvis asari compios.

& external stimulants are volatile spirits applied to the nose & temples, & fomentions to the extremities, & the flesh Brush wth Flour of Mustard -
internal stimulants are volatile salts mustard seed, Horse Radish or scurvy grass

Paralysis, Palsy 53 Hemiplegia

is a Diminution of Motion & Sensibility in certain parts of the Body attended with Cramps when it affects one whole side is called Hemiplegia, when half of the lower part paraplegia in all cases, but more particularly in old Persons the external application of stimulant will be proper to be rubbed on the part affected as well as the spine.

R^t Spirit Camphorat ℥i
Tinct Cantharid ℥ij
aq ammon pur ℥ij

& in addition sinapismus

R^t Sem. Sinapii Pulv.
Rad. Raphan contus aa ℥i
mice panis - ℥ii
acet acerrim q.s. fiat
cataplasma plantis pedum
when it affects several parts

R^t Rad. Raphan contus. ℥ij
Sem Sinap alb. ℥ij
Rad. Valerian aa ℥ij
R hab arb incis. ℥ij infuse
in vina alba ℥ij sive acetum
& colatur sumat cyathum
1 ter die
vel

Tinct Lavand C. ℥ii
Spirit ammon fetid ℥ij
capiat gutt XX. ex grooves
ve hucule

54
Syncope or Fainting

causes any sudden emotions of the mind, pungent or other odors &c during the fit the nostrils are to be stimulated with volatile spirits or salts, & the face to be sprinkled with cold water, in all cases a free admission of air is necessary if it arise in consequence of plethory, use Cinchona Sulphuric acid & aromatic bitter & chalybeates

Vertigo or giddiness proceeds from too great a fulness in the vessels of the Head, Dyspepsia or Hysteria the Patient is seized with a swimming in the Head every thing appears to go round but staggers & is in danger of falling. The complaint is attended with no danger when it is a symptom of Hysteria or other nervous complaint but when in consequence of over fulness in the vessels, only relieved by timely evacuation it may terminate in Apoplexy or Palsy

Dyspepsia (54) Indigestion

Causes grief, uneasiness of mind
intense study, indolence,
profuse evacuations, excess in
venery, hard drinking, ir-
regularity of life, too
frequent use of Tea, Tobacco
& opium, immoderate repetition
frequent rejection of Saliva;
or ademption of it, defi-
ciency in the secretion of
Bile or gastric juice, and
being too much exposed to
cold air in the treatment
of this disease. 3 Indications
must be attended to —

- 1st to avoid the symptoms which
contribute to continue the aggra-
vation of the disease
- 2nd to obviate the symptoms
by absorbents & carminatives

R Magnesia alb. ℥ij
Pulv. Rhabarb ℥ij
aq. fontan. ℥iv.
Cinnam ℥i
Tinc Lavand. ℥ss mistura
Sumat cochlear 11. ter die
or carminatives ...

R. aq. Anethi ℥ij
Spirit Cinnam. ℥i
Tinct Valerian ℥ij
Esser Opii gutt xx
cap Sacchar larg 2. ter die

Dyspepsia (55) Indigestion

to obviate costiveness by gentle
Cascutives R

Alves Socot

Pulvis Rhai aa ʒi.

Aromat - ʒi

Sapon Venet - ʒss

Syrup Zingib q s fiat massa
in pill ʒs dividend. quarum
sumat ij vel iij pro das

a blistic on the stomach is useful
to accomplish the 3^d intention of
restoring the tone of the stomach
we are to employ such medicines
as operate upon the organ

R. Infus. Gentian C. ʒss

Tinct Cardam. C. ʒiij.

Myrrh - ʒi. Flacustas

Quassia vel - ʒij

aq. fervent. ʒv. Colat.

adde Tinct. Colomb

Cardam. C. aa ʒss. M

capt cochlear iij ter in die
vel

Infus. Cort Peruv ʒv.

Tinct ejusdem C

Cardam. C aa ʒvi. M

sumat cochlear iij ter in die

add. pro u nata Acid Sulph dil ʒxx

R. extract cort. peruv, D^o Gentian
aa ʒi. Rubigo ferri ʒij Pulvis myrrh ʒi

ol. Carui ʒ^{ss}. Syrup Zingib q s pill

Lx. sumat iij ter in die

Radix Rhatan ^{vel} ʒiij Cort Aurant ʒss

Canal alba ʒss Spirit vin tenuis
degere per dies decem & Cola

Hypochond. 56 *driasis*

Hypochondriasis seems to depend
on a loss of energy in the Brain, or
nervous system caused by close
study, abscence of mind, an inac-
tive life or immoderate venery
carminatives & antispasmodics
should be used

R^t Infus. Gentianae ℥i ss
Tinct. Cardam. c. ʒij.
Ether. Sulphur gutt XXV
Tinct. Opii gutt. X.

Haustus

Spirit. Carni ʒij.
aq. fontan - ʒiv.
Ether Sulphur ʒi.
Tinct. Opii gutt XL
Lavand. c ʒj mixture
cujus sumat cochle larg II. ter
die.

Spasmi or Hysteria
Irregular motions of the
muscles are the characteristics
of this disease after the
fit R^t

Tinct. Valerian ʒi
Lavender ʒij
Spirit ammon ʒi
aq. pura - ʒv mixture
capt. Cochle. i. pro dos

Hysteria ⁵⁷ or Spasme

Historical Women are often affected with spasms & cramps give considerable doses of Ether combined with Camphor

Rt. aq. Cinnamon ʒi

Ether sulphur. ʒi

Tinct Opii gutt xx.

Castor — ʒss

Spirit Cami — ʒss Haustus

Epilepsy

This disease consists in a sudden deprivation of senses accompanied with a violent convulsive motion of the whole Body.

It is sometimes preceded by a heavy pain in the head, dimness of sight, noise in the ears flatulences a small degree of stupor & sometimes a cold vapour rising up to the Head. If it proceeds from plethora Bleeding is useful - digitalis is also useful give ʒ from 15 to 30 Drops of the Tinctura 3 or 4 times a day when the predisposition is owing to debility, then enter on a regular course of antispasmodic & astringents

Epilepsy 58. Neurosis

if from debility then give

R. [℞] aq. anethe ʒiʒ

Tinct Valer. ʒʒ.

Castor ʒi

Ether Sulph. gutt XX.

Haustus sumendus ter die

The astringent medicine called mesletop is celebrated it is given from ʒʒ to ʒi. in Camphorated emulsion

R. [℞] Cort Peruv pulv. ʒi

Pulv. Valerian ʒʒ

Rubigo ferri - ʒij

Tyr. Cort. Aurant ʒs

fiat electuarium semat

cochl. minimum. 4^{ta} quā hora

Cramp or Tetanus

Tetanus is an involuntary & constant contraction of all or several of the muscles.

If it affects the jaw only it is called trismus. if it affects the jaw & neck & the whole of the spine so as to bend the Body back is called opisthotonos.

if combined with the abdomen & body bended back it is called emprosthotonos

Tetanus 59 contin. &

when Tetanus proceeds from cold - it is in most cases removed, but when from a wound or puncture or amputation. it mostly proves fatal if from a wound pencil it over with lunar caustic. Opium is often employ'd & good Musk.

Rt Moschi gr̄ xv.

Spirit cinnamon ʒij

mister camph - ʒij

Tinct Opii gutt xxxv.

Flaustus subund 4^{ta} quaq hora opium should also be apply'd outwardly Rt.

Opii Pulvis ʒi

Camphor gr̄ xv

adipis Suis ʒij unguentum

(Spasms)

vitriolated Tartar ʒi

magnesia alb. ʒij

Tinct Opii gutt xl

Spirit of Nutmeg water ʒvi

peppermint water ʒij

aq. fontan - ʒii

3 Cochlear magna ʒiii

quaque hora

Hiccups 60 or Singultus

Is a spasmodic affection of
the stomach & Diaphragm
It is often removed by giving
small draughts of cold water
or Ether. Musk & Opium
either combined or separate
or a Tea spoonful of vinegar
with a little pepper must water

Pertussis or Hooping Cough

Is a convulsive cough interrupted
by a full and noisy inspiration
& returning in fits usually
terminated by vomiting.
gentle emetics administered
frequently is the most useful
of all remedies in the beginning

R. antimon Tartariz gr iij
aq. pur. ℥vj
Syr. Simp. ℥ss
Cochlear $\frac{1}{2}$ 3 tea quaque hora

rub the stomach with the
following emprocation

Antim Tartarizat ℥i
aq. purd ℥ij
Sinct Cantharid ℥ss

Hooping cough 1 Continued

R^t. Extract Cicuta ^{i to} ℥ij
decoct Cort Peruv - ℥i
Tinct. Opii gutt v. Haustu
ter in die sumendus
and to promote stranguary

R^t. Tinct. Opii Camphorat ℥i
Cantharidis ℥ij
capit XX gutt 3^{tea} quaque hora
& to take of the irritation from
the mucous membrane

R^t. decoct Cinchon ℥iij ss
Tinct. Opii Camphor ℥ss
.. Cantharid gutt XL
mist. capit. cochlear iij ~~ss~~ ^{ss}
quaq. hora.

Pyrosis. Water Brash

is a vomiting of water from the
stomach with eructations &
a burning heat in the stomach
Cure aptis pasmodes, or Ether
Musk, Castor & opium.

another - R^t for that & w end

Infus. Gentian ℥viiij.
Tinct. opiatell ℥iij
Spirit Ether Nitros ℥vi.
Tinct Opii - ℥ss mistu
cupiat cochlear magna ij
ter de die.

c Angina & Pectoris

an acute pain at the lower
end of the Sternum, extending
to the left arm, great anxiety
violent palpitations, laborious
breathing and a sense of suffocation
during the paroxysms great
relief is to be obtained by
powerful antispasmodics

R. aq. Anethi ℥ij
Ether Sulphuric gutt XXV
Tinct Opii - gutt XV
Lacend C gutt XX.

Haustus quarta quaque hora sem
apply outwardly to the Sternum
calica with a solution
of Tartariz Antimony

R. Antimon Tartariz ℥i.
Spirit Camphor ℥ij
aq fervent — ℥vi

a recipe for a complaint at the
Stomach with flatulency & debility

Tinct Scilla — ℥ij
Digitalis — ℥ij
amara ℥i
acid vitrioli dilut — ℥ij
aq. fontan — ℥vij
Tinct. Opii — ℥i
mister capt. cochl. magna
ii ℥ij in die
also ℥℥ gr apudteda

Asthma 63

This disease is a spasmodic affection of the lungs, which comes on by fits, & is attended by a frequent, difficult & short respiration with a wheezing noise, tightness of the chest and a cough, all which are increased when the Patient is in an horisontal state as the free passage of air to & from the Lungs is obstructed by a lodgement of mucous matter this should be expelled by Pectorals: R^t

Lact ammon. ℥iv.

Oxy mel Scill. ℥iij.

vin. antimon gubb ℥

Acet Distillat — ℥ss mustar

cujus sumat cochlear ij.

subinde vie

Gum ammon ℥ij.

Pellvis Scilla ℥i ..

Sapo Venet — ℥ii

Balsam Sulph anisat qv

gant pill. ℥x. sumat ℥iv vie

✓ pro dos

R^t Moorhouse

Lact ammoniac ℥viij 7

Oxy mel scill — ℥ss

Spirit Ether Vitriolus ℥i ss

cujus 2 larg. coltharia

3 times quaque die

Colica 64 Colic

is a painful distention of the whole of the lower region of the Belly, with twisting round the neck, with vomiting, costiveness & a spasmodic contraction of the abdominal muscles, In the windy colic R^t

aq. mentha pip ʒi.

Spirit Carni ʒss.

Tinct Lavand C ʒij

Opii gutt ~~xxx~~ Haustus

in the bilious colic if there is great irritation of the stomach give a saline draft in the state of effervescence with 20 Drops,

Tinct opii, when the nausea & vomiting have ceased take an active purgative

R^t pulv. jalap ʒss

Calomel gr. v.

Syr^{us} Pinacovi. q. s ut fiat pill \checkmark pro dos.

^{vel} Tinct sunna C. ʒi

Jalap — ʒss Haustus

^{vel} Pulv. Rhei — ʒi

Spirit anisi — ʒss.

aq. Cinnamon — ʒi

Tinct jalap — ʒi Haustus

Colica Pict^{na} 65 or dry Colic

Comes on gradually with a
pain at the pit of the Stomach
& extending to the intestines
accompanied by convulsions
dashing cold water upon the
extremities has a good effect
by the contraction of the vessels
on the skin causes a determination
of blood inwardly - Glysters

R^t decoct. Hordei ℥x.

Opⁱⁱ gr iij enema

The following ointment may
be rubbed on the belly

Opⁱⁱ purif pulv. ℥ss

Camphor grs xv.

Adipis S^ulla ℥ij.

then take a gentle purge

R^t Ol. Ricini ℥ss

Mucil Gum arab. grs

aq mentha pip ℥i

Tinct Opⁱⁱ gutt xxv. Haer
vel

Calomel - grs v.

Extract Colocyth^e c. gr. vi

Opⁱⁱ ——— gr i

Ol. Carui gutt iij

fiat pill dua quarta

hora sumenda

Cholera 66 morbus

A frequent & violent discharge
off bilious matter both upwards
& downwards with painful
graspings constitutes Cholera
morbus. it comes on with
sickness, pain, distention & flat-
ulency in the stomach & griping
pains in the bowels, succeeded
by vomiting & purging of bilious
matter heat, thirst & hurried
respiration, in the first stage
drink diluent liquors such
as Barley water, Lemon Tea
Rice gruel & Broths, then apply
to the stomach flannels wrung
out of a decoction of poppy heads
with 4 Spirit camphorated, then
administer opium ʒi grain, every
2 Hours, or 40 Drops Laudanum
in a saline draught in the state
of effervescence & this may
be repeated frequently
in the advanced stage when
the pulse is weak & the
extremities are cold, give
opiates joined with crocatus
as the confectio opiata &
musk in large doses

Cholera by morbus

a cataplasm of Opium & Camphor applied to the region of the Stomach will often stop its retrograde motion.

acidum sulphuric. dilut. will frequently abate the irritation of the stomach, when the violence of the attack is abated, it will be proper to carry off the remainder of the Bile by an aperient Draught

R^t Magnesia vitriolat ʒi

Infus. Rosa — ʒx.

Syrup Caryoph — ʒi

haustus quarta hora repetendus and afterwards to strengthen the stomach

R^t Infus. Quapae ʒiʒ

Junct Columb. ʒiij

Cardam C. ʒi

Haustus ter die sumendus vel R^t

Pulvis Columb. gr. x

Zingib.

Ferre Rubiginosa gr. v.

Syrup Rosa q. s. fiat

Proles his quoties repetendus

Diarrhoea⁶⁸ Loosenes

consists in a copious discharge
of feculent matter by stool
(accompanied by griping
& often at first by a slight
degree of vomiting, is preceded
by a murmuring noise in
the intestines, treatment

1. remove the morbid cause
- 2nd suspend the increase of action
- 3 restore the impaired tone of the
first give an emetic

then Pulv. Rhei ℥i.
aq. Cinnamon ℥i℥ss
Tinct Lavend. C. ℥ss
food demulcent as Barley
Pie &c.

when it proceeds from a
septic acid give

Mister Cretac. ℥iv
Spirit Cinnam ℥i.
aq. ammon Pur ℥i.

Tinct Opii gutt. xxx.
Semat Cochlear II ve III pro
re nata —

when it proceeds from turgor
ing give Rhubarb &
magnesia

Diary 69 near content

R. Pulv. Rhu gr XV

magnesia alba ʒjʒ

aq. anthei — ʒiʒ

Rosa Syrup — ʒij.

Spirit. ammon. Comp. gutt XV

mistura cujus sumat Coch. ii
vel iii minima bis terae de
to amon the 2nd indication

have recourse to opiates

R. Confect opiat gr XV.

aq. Cinnam.

Tincto ac ʒij.

Tinct Kino — ʒi

Lav. C. — ʒj. haustus

quarta quaq. hora sumendus

the 3^d indication is to be affected

by use of astringents joined with
aromatics & Tonics

R. Alum Rup Pulv.

Terra Catechu aa gr X.

Opii gr j.

cons. ro. Rosa q. s. ft. Bolus
ter quater du sumendus
vel

R. decoct Cinchon ʒiʒ

Tinct yus dem ʒij

Katechu iʒ

Lavind C. ʒj.

Haustus 4^{tes} horis sumendus

Incubus 70 or Night man

Is a nervous affection, & comes on during sleep with a sense of weight or oppression at the chest, the Person makes efforts to speak & cannot.

Causus an anxiety, grief & intense thought, but it is sometimes occasioned by taking food hard of Digestion
R. a course of tonics will be proper as under the
Head Dyspepsia
constriction of the Diaphragm & muscles of the Chest is the proximate cause of incubus.

R. a course of tonics will be proper as under the
Head Dyspepsia

R. Infus. Gentianae ℥ ʒiʒ
Tinct Cardamom ʒiij
Myrrh - ʒi.

Flacustus

v. e.
Infus. Cort Peruv. ʒiʒ

Tinct. yusdem ℥
Cardamom aa ʒvi

Temat Cochlear iij ter die
adde prou matu
Acid Sulph. dilut. gutt ʒ ʒ

A Kople 71 a Atrophy

This is marked by a gradual
wasting of the Body unac-
companied either by Difficulty of
breathing, or fever, but attended
with loss of Appetite bad
digestion, depression of Spirits &
Languor causes are a poor
nutr, an wholesome air, except
in venery scrofulous disposition
pleur & others, severe evacuations
young Persons who grow too fast
are subject to it it is difficult
to curb and not infrequently
terminates in dropsy.

To assist the Digestive powers
enter into a course of stomachic
Cultus, taking care to have proper
evacuations

R. Infus. Cenchord ℥ij ℥^{ss}
Tinct Colomb — ℥ij
kali preparat — ℥i cap
cochl i. bis diei
vid

Rubigo ferri gr. v.
Pulv Colomb gr. v ℥ij
pulvis manet & vesper
capendus

Pulmon. 72 Consumpt

Pulmonary Consumption consists in an excretion of purulent matter from the lungs, with general emaciation debility, hectic fever, & a cough, which is usually worse towards evening. Causes -

Hereditary disposition, a long neck, prominent shoulder & narrow chest, a delicate rosy complexion, violent affections of the mind as grief
It begins usually with dry cough from which nothing is spit - but a dry mucus
This continues some time, after which the Patient spits a thick matter sometimes streaked with blood, breathing becomes difficult, and great emaciation, face flushes after eating palms of the hands & soles of the feet are affected with a violent heat, breathing difficult attended with hectic fever

Pulmonary³ Consumption

Remedy at first employ gentle
Laxatives, diet should consist
of things that are nutritive &
easy of Digestion, such as
jellies & Animal Broth also
shell fish, Milk particularly
womens & asses also Butter
Bristol Hot wells & short voyages
have been recommended in this
Digitalis is an excellent remedy
in the early stages of the Disorder
it possesses a sedative power &
this by lessening the irritability of
the muscular fibre explains its
salutary effects

Rt D. M. Lean

fol. digitalis purpurea Recent. $\frac{3}{iv}$

Spir. vin Rectif. $\frac{3}{v}$

digesti die septem leni calore
dein cola. he begins with

from 10 to 15 drops every 2nd
day until the Habit falls its

influence, he then diminishes
in the same gradual manner

the Body may with safety be
kept under its influence for

weeks & even months. in the
early stage an emetic may

be given every 3^d day

zincol. Cupri gr. iii

T. meacuhanda gr. v

Pulmonary (74) Consumption

and to allay the violence of
the cough R^t

Decoct Glordic --- ℥v.
Lact ammon --- ℥ij.
acet Scilla --- ℥ij.
Syrup Solitari --- ℥ij.
Mistur cuius sumat Cochli
tupis argente vel

Ol. Amygdal dulc.
Mucil. Gum arab aa ℥ij.
aq. Fontan --- ℥ij.
Syrup Althea --- ℥ij.
Vin. antimon gutt xxx.

& take for ordinary drink

R Decoct Glordic ℥ij
Gum Arabii - ℥ij.
Syrup Lemnae ℥ij
potius

The Lichen Islandicus
is also much recommended
in Phthisis, & the best
form of exhibiting it is
a decoction with Milk
emetics should be taken
to the last stage of the
Disorder, rosa ursi is
also given in Cases of
15 J. 95 to 8

Apthae 75 Thrush

It shews itself at first by a burning heat in the stomach after some time small pimples about the size of a pins head appear on the Tip & edges of the Tongue, & these spread at length over the whole inside of the mouth & occasion a great rawness of the parts, skin is remarkably dry, countenance pale & pulse small.

It will in all cases be advisable to begin the cure with giving a gentle emetic to dislodge the phlegm, and if there be any sour belching attended with heat then give an absorbent.

R^t. Magnes alb — ʒj
aq. Pur — ʒij
spirit Carnam. ʒij
aq. ammon Pur. ʒj

cap^t. cochl. ij pro re nata
or if the disease arise from
ingesta then cleanse the
Bowels with Rhubarb &
Magnesia, when the purging
is excessive, then have recourse
to astringents joined with
Opiates as under the head
Diarthra

Aphtha 76 Thrush

R. confut. Catechu ʒij.
aq. cinnam — ʒij.
" perra — ʒij.
Tinct Kina — ʒij.
Opis gutt XL

fiat mistura cuius sumat
cochl. ij vel iij ter die
vel

mistur Cretac ʒiv.
Spiritus Cinam ʒi
Tinct Catechu ʒij
Opis gutt XL.

it is also useful to give a
gentle Diaphoretic
to remedy the incon-
venience arising from
the sores of the
mouth, then should be
washed frequently with
a healing, astringent gargle

Rf. Infus Rosa ʒvj.
Alum picro ʒij.
Mel Optem ʒi.
Gargarisma
vel

Borax in pulv trit ʒij.
aq. fervent — ʒv.
mel Rosa — ʒi.

(77)
Tympany

Is a violent distention of
the Intestines or cavity of
the Abdomen by wind
proceeds from sudden suppression
of Diarrhea, body is extreme
put a Clyster pipe up the
rectum & give Carminatives

Rt Puls. aromat
extract gentiana gr x
O.C. anisi. gutt. iiij.
Syrup Zingib. q. s. Bolus
quaq. hora sumendus
vel

Infus. Cort. Peruv ʒi

Tinct. Cardam. C.

Spirit. Pimento aa ʒij

Lacund Comp ʒss

Should these fail, then employ
active purgatives

Rt Tinct. Senna C. ʒij.

Jalap. — ʒij.

Fluor. —

vel
extract colocynth C. ʒi

Calomel — gr. v.

O.C. Carui gutt. iiij.

in pill & dos

also antispasmodics such as
apostida. Also with
infusions of Floss radish
& ginger together with
Chalybeates

78
Hydrops Dropsy

is a preternatural collection
of serous or watery fluid
in the cellular substance
or in different parts of the Body
when it is diffused thro the
cellular membrane it is
called Anasarca
when in the Cavity of the
Cranium Hydrocephalus
in the Chest Hydrothorax
in the cavity of the abdomen
Ascites

In the Uterus Hydrometra

In the Scrotum Hydrocele
in the Ovarium ascites Ovarii

causes - a Family predisposition
frequent salubritas, excessive
evacuations, free use of liquor
serratoses of the liver, spleen
jaundice, Diarrhoea dysentery
phthisis, asthma, Cough,
Scarlet fever, a suppression
of sudden evacuations,
strokes in of eruption in order
obstruction in the lungs,
exposure to a wet atmosphere
defect in the absorbents
& general debility

Anas Garca

Cure 1st to remove the morbid
causes, 2nd to evacuate the
serous fluid collected, 3^d
to restore the Tone of the System
best method to support the weak
parts with a Flannel Roller
to prevent their yielding to Disten-
sion, next promote a Discharge
by frequent punctures,
emetics administered frequently
promote absorption.

Rt vin. antimonii ℥ij

vel Oxydul Scellit ℥i

antimon Tartariz ℥i

aq. menth satfo ℥ss Haustus

Purgatives are likewise employd

Rt Cammon grs xii

Calomel ℥i

Crystal Tartar ℥ss

Infus. Zingiber grs x dos

Deaphoretics are also used

Rt Camphor grs v

Pulv. antimonial grs ij

Confectio aromate xii Bolus
vel

Rt aq ammon acetat ℥ss

Uche antimon gutt xxx

Spirit ammon C. grs xx

Syrup Zingib. ℥ij Haustus

to strengthen the System

Rt Infus. Quinaul. ℥i

Tinct. Cichond. ℥ij

Ter die Cantharid gutt xv

Anasarca & Ascites

Ascites is marked by a tense swelling of the Abdomen wth an evident fluctuation
we have recourse to purgatives - diuretics & Diaphoretics.

R^t - cathartice

Pulv Jalapii
Scammonaa xii grs
pulv aromatic - grs 4 -
recd

R^c Pulv. Scil.

Digitalaa ʒij
extract Conii ʒi.
Ol anisi — mʒ

roucilaq grs. ad formam

Pill XL Capt. 1 bis die
W.S.

Diaphoretic

R^t aq ammon acet ʒʒ

Raphan ʒi
Spirit Ether Nitros ʒʒss

Tinct Lavend C ʒʒ

Syrup Zingib ʒʒ

Haustus ter die capere

Diuretic

Tribu venet in vitello Orr

Solutus ʒʒ

extract aloes ʒʒ

pulv. Cinchonae ʒij. fiunt

Pillulae aa ʒʒij capt
tris die

81
Hydrocephalus

Pyrexia, pain in the Head
 particularly across the brow
 Stupor, dilatation of the Pupils
 nausea vomiting, proternation
 slowness of the pulse and
 convulsions, one of the earliest
 criterions is the patient being
 unable to raise his head from
 his pillow, when the Patient
 cannot bear to be raised up in
 Bed it is a bad symptom
 so is Diarrhea - in this and all
 Dropsies the exhalant arteries
 throw out a greater quantity of
 fluid than the absorbents can
 take up. Remedy

Cold applications as vinegar
 & water on cloths -

Drastic purges as Calomel &
 Jalap, or Calomel & pulvis
 Antimonialis. or Digitalis
 8 or 10 Drops of the saturated
 Tincture, a Discharge from
 the nose ought to be promoted
 by snuffing up powder of
 Asparagacca, white Hellebor

R^t
 folia vesic. Asari

Marjorana

Mati Syriacae

Lavandulae aa ʒss

ʒi pulvis

Rachitis 82 Rickets

The marks of this Disease are
an uncommon size of the Head
swelling of the joints, flattened
ribs, incurvation of the Spine
protuberance of the Belly &
general emaciation

The cause of the Disease is sup-
posed to be a deficiency of the
phosphate of Lime or animal
gluten in the bones, hence the
Rickets are deprived of that
necessary solidity in consequence
of the debility in the vessels
the Head becomes large,
the abdomen appears tumid
in the cure of the Rickets
we should invigorate the
System by tonics

R Rubig ferre gr vi.
Pulv R hie gr v.
Sachar alba gr viij
pulvis mane & vesper sum
vel

Tinct Ferr ammoniac ʒi
capt cochlearin. i in
aquo frigida cyatho
bis in die

Scroph 23 la

consists in hard indolent
tumours of the conglobate glands
in various parts of the Body
but particularly in the neck
behind the ears & under the chin
which after a time suppurate
& degenerate into ulcers from
which instead of pus is a
white curdled matter, it
most affects persons of a lax
habit, with smooth skins
fair hair & rosy cheeks.
scrophula is a disorder closely
connected debility & lax fibre
cold Bathing has been found
beneficial in invigorating the
System, calomel is also an
excellent medicine

Rt. Pulv. creta prep - ʒi.

Calomel $\frac{grs 11}{\text{---}}$ - ʒi.

Antimon Tarturez. $\frac{grs 4}{\text{---}}$ M

fiat pulvis in chartulas xij.

dividend quarum sumat 1

bis die

Hydrarg cum Sulphur $\frac{grs xv}{\text{---}}$

Pulv. Antimon - $\frac{grs i}{\text{---}}$

pulvis nocte & mane sumend.

Calomel $\frac{vcl}{\text{---}}$ & Sulph Antimon

prep aa ʒss. Gum ammon ʒi

Bals. Peruv. q. s. It map in

Pill xxx. distrib. quarum cap

1 vel 11 omni nocte

Trochu 84. la

Hemlock, may be employ'd
externally in discussing tumors,
either in the form of Plaster
or Poultice — & internally

R. extract cinchon ʒij
Cicuta - ʒi

fiat pill quarum sumat
" velle iij' bis die
vel

Spong ust ʒi.

pulv. Rhiz^o iij

mel optime q. s. M

Boles bis in die sumendus
vel

Spong. ust — ʒi

confut aroncat q. s. X.

aq. mentha satia ʒi.

Glaustes

vel

Natre preparat ʒiij

pulv. cinchon ʒijss 1½

mucilag gum q. s.

fiat electuarium cujus
sumat quant nuc.

mas charta ter die

tumours may be dissolv'd
by aq ammon acetat em
mountain oil, mercurial
ointment

Typhoid's 85 Gonorrhoea

Typhilitic poison cannot be conveyed by breathing air which is contaminated by a person labouring under it, it is necessary that the poison be applied to some part which is soft or covered with a mucous membrane or else to some place where there exists either an excoriation, ulcer or wound. Gonorrhoea is a discharge of matter from the mucous membrane & glands of the urethra. Chancre is a venereal ulcer the nature of which is to be much inflamed to be unequal at the bottom to have prominent edges of an ash colour, & to show no disposition to heal in Gonorrhoea in consequence of inflammation the prepuce becomes so swelled at the end that it cannot be drawn back which is called a Phymosis, or being drawn behind the glans it cannot be returned which is known by the name of Paraphymosis, when the parts are not inflamed there is only a discharge with a heat or scalding in making water.

86
Gonorrhoea

In the cure of it if the patient should have much pain, heat, & difficulty in making water, he must keep the Body with gentle purgatives & sedative injections, drinking freely of mucilaginous liquors such as barley water, Hensd Tea or solutions of Gum Arabic in Milk

R^t Ol. amygdal $\frac{z}{iv}$.
aq. lithargy acet gutt vij
Injection
vll

aq. distillat. $\frac{z}{iv}$
acid muriat gutt vij

R^t elect. Senna. $\frac{z}{ij}$
Crystal. Tartar $\frac{z}{ij}$
Pulv. Jalap. $\frac{z}{j}$
Syrup simp q. s fiat elect
tuarum sumat cochl. 1 ~~may~~
minim. mane & ves per
Injection

Cerup. acet. grs xv.
Zinc vitriol de x.
aqu. distill. $\frac{z}{ij}$.

Gonorr 87 rheu

If the pill Hydraz. occasion
purging give.

R Calomel

Camphor aa ʒi

Opie — gr. xij.

Syrup q.s. fiat pill xv

quarum i vel ij mane et nocte
quotidie

R. Cerus. acet ʒj

aq Rosæ

Tinct Opie. ʒij. Injctio

The matter discharged in Gonorrh
being acrid is apt they lodge
between the prepuce & the penis
in Men to occasion an excoriation
& ulceration in these parts, to

prevent w^{ch} may attention to clean
liness by washing them twice
a day with milk & water &
lotions of Cerus acetate

R Cerus. acetat ʒj

aq distill. ʒvj. injctio

R Turbath vinct ʒij

Calomel — ʒj

pulo. Camphor — ʒi.

Calomel ʒij

Turpethum ʒj. consuro q.s.

fiat pill Lix. cap^t 1 nocte

& mane

88
Chancres

The parts most apt to be affected in Men are the prepuce, the Frenum & in the angle between the glans & body of the penis and in Women about the nymphæ and Clitoris.

Syphilitic matter applied to other parts covered with a mucous membrane such as the lips, Nostrils &c may give rise to chancres there also Chancres may sometimes be removed by washing with a weak solution of mercurated Quicksilver. nitric acid may assist the use of mercurials, give one drachm of it diluted in a quart of an infusion of Lemon peel in warm water every day a Bubo is a tumour set on the groin, it may be dispersed by rubbing mercurial ointment on the inside of the thigh which is infected if a salivation takes place

Conferm 89 Lues

- keep the Body open with gentle
lucatives, wash the mouth &
throat with the following
gargle R^t

Borac. ℥ss
mil ℥i
aq feovent ℥vi

to employ mercury internally
either give one or two pill
Hydrargi. or R^t

Calomel ꝑꝑ Camphor
aa — ℥ij

Opie — grs — x

mil q. s. quant pill xv
sumat, mil ij mane et nocte
quod die
vil

Calomel — ℥i

Antimon Tartarizat grs v

Opie — ℥ss

mil q. s. quant pill lx

capt. duo bis die

vil

oxy muricus Hydrarg viij

spt. vin tenuis — to i solue

quant solutio cyas capt. Cochle

1 larga mane et vespere

when salivation comes on too quick
give one or two purges &

take ℥ss to ℥i Sulphur twice

a day

Leprosy 90

Consists of an eruption of Copper
coloured Spots over various parts
of the Body with a glossy &
scaly appearance of the Skin
falling off of the Hair, hoarseness
of voice & offensive smell of mouth
if any relief is to be afforded
in this Disease, it is chiefly
to be observed in a rigid
observance of a vegetable Diet

Small Doses of Mercury
& antimony have been
given at several periods
R. Calomel

Sulph Antimon precipit
aa ʒss
Gum Guaiacum ʒss
Bals. Copais q.s. qat
Pill Ix Capt i to iv hora
decubitus.

or
a solution of Hydrag. muriat
 muriat & Plummer's Pill
& wish the patient may drink
a pint a day of the Decoctum
Sarsaparilla compositum

Scorbutus 9^o Scurvy

The characteristics of this Disease are debility, bleeding of the Gums spots of different colours on the Skin for the most part livid particularly at the Roots of the hairs after living on putrescent salted animal food

Jaundice & Icterus

is characterized by a yellowness of the skin and eyes whitish or clay coloured faces & urine red, tinged things dip't into it of a yellowish hue, it takes place mostly in consequence of an interrupted secretion of the Bile from an obstructed secretion in the ductus communis choledochus which occasions its passing again into the blood vessels. In some cases it may however be owing to a redundant secretion of the Bile, causes producing the first of these are, calculi in the Gall bladder and its ducts, spasmodic contraction of the ducts themselves

Icterus 92 Jaundice

& lastly pressure made by
tumours situated in adjacent
parts, the proximate cause
of icterus is absorption or
regurgitation of the Bile
into the vascular system
Biliary affections are frequently
brought on by drinking freely
of spirituous liquors, hence
they are often to be observed
in the debauchee and drinker
of Opium, they are likewise
frequently to be met with
those who lead a sedentary life
care is to be attempted by
restoring the interrupted passage
of the Bile, secondly by carry-
ing it off thro the Intestines
& 3^d by relieving the symptoms
whether the Bile is obstructed
by biliary concretions or a
spasmodic constriction of
the ductus communis chol-
dochus, the same plan
nearly must be adopted
to promote Diaphoresis
give pulvis Specuhand
compositus

Icterus 93 Jaundice

In order to push forward bilious
concretions emetics must be given
then drastics if the Body is costive

R^t pulv. Rhei grs x x
Sapon Alb — ʒi ss
Calomel — grs xij
Syrup q. s. fiat pill xxiv
cap^t ij vel iii hora somni
vel

Decoct cinchon ʒi ss
Tinct ejusdem ʒij
Sal. polychrest grs xv.
pulv Rhei grs v Haustus
hora meridiana & vesper. secundum
vel

Olus socot — ʒi ss
Sapon venet — ʒi
Kali prep — ʒi ss
Syrup spin. cerv. q. s. fiat pul
xxxvi cap^t ij hora somni
vel

cathartici extract — ʒij
Zingib pulv — ʒij
Sapo castil — ʒi. fiat
pill capt. 2. for a lax

Remedium certum
first emetic
Lac Sulphur ʒss
Calomel grs — 5
2 Doses

Nympho 94 mania

It arises either from inflammation
of the Pudenda or acrimony
the fluids of the parts

R. outw application

aq. distill. ℥iv.

℥. litharg aelt gutt XXV

tinct opij venos de xi

inwardly R.

Camphor gr vj

Nitrix " x.

opii " ss

conserv Rosæ q s fiat

Bolus sumend ter quatuor

die

Sanaphrodisia impotency

usually arises from weakness

but only by excessive evacuation

acrimony or onanism or from

great Debility in the

system - use Stimulants

R. Cauterid gr xvij

opii.

Camphor aa xxxvj gr

conserv cynosbat q s.

fiat pil. xxxvj. capt. ij

omni nocte vel

decoct Cinchon ℥i

tinct Annem C. ℥ij

Cauterid gutt XII

haustus bis in die sumendus

Anaphrodisia Impotenti

It, in some cases owing to an original defect in the organs of generation, but more usually from excessive venery or onanism, or from great debility produced by want of nutritive food.

when it arises in consequence of the above the system must be strengthened by nutritive food

Rx Cantharid gr. viij
Opii.

Campborae aa gr. xxxvi

conserv. cynosbat q. s.

ut fiat pill xxxvi cap. i vel
q omni nocte

v. l.

Rx decoct Cinchon. Zi.

Tinct. Curram C. Zij

— Cantharid gutt xij

fiat Haustus bis in die
sumendus.

(96 / ^{urina}
Encuresis or Incontinence of

This usually proceeds from
relaxation or paralysis of
factions of the Sphincter of
the Bladder induced by various
debilitating causes

Remedy. Cold Bathing
internal use of chalybeates
to overcome Dyspepsia
The ura urinae taken from
a Scruple to ℥ Drachm
twice a Day. Drinking ℥ pint
of lime water after each Dose

Gonorrhoea Dormitatio
emission of Semen
proceeds from debility, & ex-
cessive venery or ardens

Rx Bals. Capivi. ℥i.
vill. Ovi uni trantur in
mortar. marmor. et adde
gradatim
Tinct Benzoes C. ℥ss
aq. fortis — ℥ss
Syrup albid. ℥ss mist
cujus sumat Cochlear
ij ter die

97
Leucorrhœa. Fluor albus

The cure is to be observed to increase the action of the absorbents in the uterus and vagina, to correct the acrimony of the Discharge, & to strengthen the system

Rx Zinc Vitriolat ℥i.
Croup. acetat gr̄ x.
aq. Distillat ℥ij. Injicta

Rx alum Rup. pulv. ℥ij
Ras. nuc Mosch. ℥ss
Torr. Catechu — ℥i
pulv. Cinchon. ℥ss
syr. Lingib. q. s. f. l
electuareum cyas sumat
quant. jug laudes ter. die
besides astringents employ such
stimulants as are determined to
the urinary passages

Rx pulv Gum oleban
Balsam Capaiba ℥ss
pulvis Rhu. — ℥i
Gentian — ℥ss
conserv Rose — ℥iij
Syrup Lingib. q. s. fiat
electuarium cy. sumat melleo
moschato magnitudo bis
die

(98)
Obstipatio Costivens

Laxatives most proper for
obviating costiveness are those
which afford the least
irritation

R \bar{t} Kali Tartarizat ℥ij
mann. optima ℥ij
aqu. ferunt ℥ij
Tinct Jalap ℥ij
capt @ medium pro Dos
vel

R \bar{t} elect. i senna ℥ij
cryst. Tartar ℥ij
puls. Jalap ℥i
syrup Zingib. q. s ft
electuarium cujus sumat
quant. juglandis Florasoma

Ischuria & Dysuria

Ischuria is a total suppression
of urine - Dysuria is a
frequent desire to make
attended with difficulty
drink diluent liquors such
as Barley water -

R \bar{t} Mucilag Gum ℥ij
ol oliv. ℥ij lavent. sim
et adde
℥ij ether nitros. ℥ij
Tinct opii ℥ij
vel Tinct ferr. muricata

It seems to be a want of power in the system (at the period of Life) when they usually appear, to propel the Blood to the uterine vessels with a force sufficient to open their extremities. costiveness always precedes & accompanies the other symptoms. symptoms are Headings, fatigue, palpitation, pains in the Back, loins, Thighs & flatulency & acidity, in the Stomach a preternatural Desire for Chalk Lime &c. cure is to increase the tone of the system, & excite the action of the uterine vessels. the first is to be effected by a generous diet, exercise, keeping the mind tranquil, 1st a gentle emetic then infusion gentian & C. with chalybeates 2nd excite the action of the uterine vessels by Exercise, friction, applying heat to the organs of generation, then stimulate the rectum by draughts Rx. pill. ex aloes cum Myrrh ℥i in pilculas xij dividenda sumat ij vel iv. pro dos

Amenhaea ^{or} 100 continued

after the above medicines

Rx Tinct. Cinchon. ℥jss
Ferri muriat ℥i.
Cautharid ℥jss
capt. cochlear. Thean j. man
meridie & nocte.

Rx Tinct ^{oil} aloes comp ℥jss
Hellebor nigr
Castor — ℥ij
Cautharid. ℥i

Suppression of the menses

as relucants apply Bladders
filled with warm water to the pubis
or sit on a Chamber pot filled with
warm water then employ
emmenagogues —

Rx Tinct. Helleb nigr ℥jss
Myrrh — ℥i
Cautharid — ℥ij
semit gutt. xxx ter die

Rx Tinct ^{oil} aloes c.
Marter aa ℥jss
Castor — ℥ij
cochlear Thean j ter die

Rx pulvis myrror c. 7
ferri ammon gr v
cons Roso grs. flat B. the
bis in die capiendus

Suppresⁿ 101 continued

R^x Ferr Rubig.

pulv. rub. Groh C. aa ʒi

albes. Socot. ʒij

Sapo vinct ʒss.

Syrup q. s. M. fiat

pill xxxvi. capt. iij bis die

Bronchocele

Is at first without pain
but as the tumour increases
it grows hard & irregular

R^x Calomel ꝑ - gr̄ss iij -
capt. hora somni tribus
noctibus. tunc mane

Sode Sulph. ʒi.

postea R. Spongia ust. ʒvi

pulv. Gummarab ʒi

Zingib. - ʒss

Syrup S. Supt. q. s.

Thochic N^o Xij. . . i omni
nocte.

Sulphuret. potash gr̄ss xxx.

dissolved in a quart of water
to be taken daily if the other
fail

matron prepared made
as above in Thoch. has been
given with success

Cephalalgia ^{10.2} Head ache

causes. Indigestion, foulness of the Stomach, hindrance of a free circulation of blood thro. the Head, exposure to the Sun, translocation of gouty matter, the stoppage of some evacuation, inebriety, and too great a determination of blood to the Head

Remedy. Linen Cloths wetted in vinegar & water, or in camphorated Spirits may be applied to the forehead if a nervous affection. valerian castor, asafetida & others rub the temples with Oil here with Bark & Steel as recommended under Dyspepsia

Rx pulv cort peruv Zi
aq. Cinnamon Zij
acid Sulph dibutt gss XX
Haustus

Rx Infus cort peruv Zv.
Funct. ejusdem C.
Cardam C. aa Zvi
misc. Sumat Cochlear ij
ter die.

Odontal¹⁰³ gia

To relieve the pain when there is a hole in the tooth, introduce dipd in Oil of Cloves, or Nutmeg when the neighbouring parts are affected, apply Blisters behind the ears, or rub the jaws with unrefined liniment

R. R. linimentum ammon fort.

spirit ^{vel} camphorat ʒi
aq. ammon pur ʒiij

Q. C. Bergamot gutt x m

to promote a secretion of the salivary glands chew ginger & Pellitory Root

Charcoal reduced to a fine powder by washing the mouth with a little of it & infused in water takes away the bad smell of decayed teeth.

Faciei morbus mercurum cruen

Stimulating embrocations, Blisters & with mercurial ointment & electricity have been resorted to as palliatives - solution of Arsenic & Opium in considerable doses taken internally, were given -

Gastrdynia

This disease occurs in those who are afflicted with dyspepsia, as heartburn, eructations, flatulency &c. It arises from an inactivity of the stomach, whence the aliment instead of being concocted and converted into chyle, ferments producing acetic acid sometimes the gastric juice becomes so acid as to give pain to the upper opening of the stomach, to obtain relief we must have recourse to antacids, calcareous earths, alkaline salts, to check the fermentation, we may employ diluted acid of vitriol with Brandy, & strengthen the Indigestion by aromatics, bitters and chalybeates internally under the Head

Dyspepsia - if attended with acute pain give ether & opium combined with Stomachii Bittus and chalybeates. The Oxyd of Bismuth
 dose grs iij. to x. & give
 Tragacanth. xxv grs ter die
 mix in with 3 grs & increase.

(105)
Gastrodynia pain in Stomach

Sprains

Sprains of the tendons and ligaments are usually produced by pain & swelling often an increased action of the arteries in the inflamed part with an effusion from the rupture of some of the small vessels — to prevent the swelling apply restraints such as nungar, ardent spirits &c immerse the part in cold water apply a diluted solution of the ceruja acetata or aqua litharge keeping linen cloths dipped in them —

Rx aq. ammon acetat ℥i
Liment. Saponis aa ℥i

R^o vel
Solutionis Saponis camphor
aq. ammon acetat aa ℥i
aq. ammon. pure ℥ss

Rx ammon. muriat ℥ij
aceti
Spt vini Rectific aa ℥ss

Rx ol Succin Rectificat
Tinct opii aa ℥ij
adipis Sull — ℥i
Limentum

(106.)
Lithæasis.

a fit of the gravel is attend-
ed with pain in the loins, numb-
ness of the thigh on the affected
side, nausea and vomiting
& a slight suppression of
urine as the irritating matter
removes from the kidneys
down into the ureter it produces
such pain as to occasion
vomiting. symptoms
which attend stone are a
frequent inclination to make
water, in small quantity,
is often suddenly interrupted
and is voided towards the
end with pain in the glans
penis, pain in the neck
of the bladder, tenesmus
itching in the anus.

of this class of Lithontriptics
fixed alkali seems to be the
most powerful, it may be
used in both its caustic &
mild state

R. ℞ aq Kali gutt XX.
in jusculi Cyatho ter die
nil Kali acetate Zij. liij
dec in aq. distill lb
solut ✓

Lymphasis ¹⁰⁷ grave

The ura ursi is employed
it serves to brace the parts
& render the secretion natural

Rx pulv. ura ursi ℥i
aq. pura ℥ijss
Spt. Juniper ℥i
Syrup. Cort accraut ℥ij
miscce Flaustus ter die
sumendus

vcl

Rx pulv. ura ursi ℥i
pulp. Pruna Gae ℥i
Syrup. albid. q.s. ʒj
electuarium cuius sumat
quant juglandis ter die

vcl

Rx aq. faniculi ℥ijss
Kali gutt xxv.
Spt. ether. nitros ℥jss
Tinct opii gutt xx
Flaustus ʒij horis sumendus

vcl

R. mucilag gummi ℥jss
aq. faniculi - ℥i
Spt. ether. nitros. ℥jss
Tinct opii gutt. xxx

Ulcers ¹⁰⁸ ulcer

when an ulcer is recent
it ought to be healed with
precipitate and light
bandages
retrioles of copper may be
substituted.

To sweeten ulcers carrot
Poultice is useful

In ulcers of long standing
besides local application
give Plummer's Pills
a solution of mercurated mercury

Scalds or Burns

First plunge the part in
cold water, pump upon it
and blow cold air with
bellows on it then
first apply

R^x spt. vin. Rect. ℥ij
aq. calis. ʒj totto
v. e

R^x aq. litharg. acet. ℥i
spt. camph. hor. ℥ij
aq. distillat. ʒj
then apply

R^x Ol. Oliv. ℥ij
aq. calis. ʒij linum

(109)
Herpes

Its causes may be referred to want of cleanliness, a low diet &c but certain constitutions are predisposed to Herpetic eruptions

Cure is to be effected by lotions of vitriolated zinc and cerussa acetata together with ointments of Zinc

Rx Zincæ calcinat. ℥ss
Sulphur Sulph - ℥i
unguentum
vel
unguentum calc. Hyd. alb.
vel

unguentum Hydro nitrat

when the Disease is inveterate have recourse to internal medicine, calomel & antimony, decoct. Sarsaparilla &c

Rx antimon Tartarizat ℥xv
Calomel - ℥i
opii — ℥ss
Syrup Semp. q. s. fist
pillul ℥x. sumat i mane
et nocte

Psora (110) Itch

It is confined to the skin &
never affects the general system
The animalcula seen in the
pustules are the effect not the
cause as all stagnated fluids
abound with animalcula

Rx magnesia calc.

Hydrarg cum sulphaa ʒ^{v}
Calomel ʒ^{ij}
pulvis hora somni sumendus

Rx Calomel — ʒ^{ss}
antimon Tartarizat $\text{ʒ}^{\text{r}} \text{XV}$
opii — ʒ^{ss}
Syrup simpl. ʒ^{ss}

ft pillule ʒ^{ss} . sumat j vel ij
omni nocte

Rx Hydrarg mercuriat ʒ^{vi}
antimon. mercuriat ʒ^{x}
aq. Distillat — ʒ^{vi} lotus

Rx Hydrarg mercuriat ʒ^{x}
obi unius vitellum
adipes suill. ʒ^{ij} unguentum

Rx Calc. Hydrarg alb. ʒ^{ij}
Calomel — ʒ^{ss}
Lac Sulphur — ʒ^{ij}
ol. Lavand ʒ^{ss}
adipes suill. — ʒ^{ij}

unguentum omni nocte

applicandum

Vermines (III) Worms

They appear frequently in those of a relaxed habit, & whose bowels contain a prodigious quantity of mucus or slimy matter. Symptoms, variable appetite, fetid breath, pains in the stomach, grinding of the teeth, picking of the nose, paleness, hardness & fulness of the belly, slimy stools, griping pains about the navel, itching of the anus, slow fever & sometimes convulsive fits.

In the cure 1st effect the destruction & discharge of the worms, 2nd prevent their future generation, the first is to be accomplished by vermifuges, wh^{ch} act in the 3 following ways, 1st by simple purging as mercury Rhubarb & Aloes also better as rice &c 2^{ndly} mechanically as pulv Stanni cowhage &c 3^{rdly} Chemically, as lime water which loosens their adhesion to the Intestines by dissolving the mucus wh^{ch} they are involved

Vermes (112) Worms

we may begin with those
which act mechanically
R. Stanni Rasur.

Conserv. absinth. aa ℥ss
Syr Simpl qss m
℥ Electuarium cyssum
℥i omni mane

℞ vel
Hydrargy cum sulph ℥viij
Pulv. Stanni xv
pulvis

℞ vel
Stylobii iv. — viij. grs
~~Pulv. Stanni xv grs~~
pulvis nubl optim
q. s. m. bolus

℞ vel
Stylobii ℥i
Syrup Simpl q. s. M
℥ Electuarium cyssum sunt
cochl. minimum mane
per tres dies et postea
Olei Ricini ℥i.

after continuing them for
2 or 3 days have recourse
to those which have a
purgative effect.

℞ Calomel grs iij
pulv hii — grs x

(113)

Vermes worms

Rx vcl
pulv. Jalapine X grs
Calomel ℥ij D^o

changing after a continuance
of proper time for those which
act chemically

Rx aq. Calicis ℥ss in die
vcl

Pil Saponis

along with those which act
chemically, it will be proper
to employ some better infused

Rx Rad. Gentian
fol. absinth

— Ruta

Cost Limon aa ℥ij

aq. ferventis — ℥i.

macera per horam unam
et cola

if these means fail, use
the Spigelia or Indian pink
by a proper use of Stigolobium
with the ol. Recipe after
every 3^d dose we shall
soon have recourse to
other medicine, as I never
knew it fail

(114)
Vermes — worms

For the destruction of the
ascarides it is usual to
throw up injections into
the rectum, viz —
an injection of of the
hairy part of the stizolobium
mixed in thin grease

vel
introduce a piece of Caudle
up the rectum well smeared
with mercurial ointment
is a likely method to destroy
ascarides

vel
Rx aq. calcis tepid ℥x
pro enemate

vel
Rx fol. sabin
— Ruto
Absinth. aa ℥ij coq.
ex aq. pura ℥ij ad ℥x
colat adde
℞. Ricini ℥ss M. ft
Enema

℞. aloe Hepat pulv ℥i
decoct avend ℥x —

vel
fol. Nicotian ℥ss
aq. fervent ℥x

(115)
Poisons

are Mineral, vegetable,
aerial & animal.

mineral corrode, stimulate
or inflame, the latter stupify
Some of the mineral Poisons
terminate life till after two
or 3 Hours of excruciating pain
whereas some of the vegetable
destroy in a few minutes.

The aerial poisons operate
still more quickly than any of
the others & their action on
respiration is so peculiar as
not to be mistaken.

The chief of the mineral
Poisons are arsenic, mercurial
Mercury & Lead.

When Arsenic has been taken
a burning sensation is soon
felt in the stomach, violent
pains in the Bowels, a severe
vomiting, will arise, the
tongue of mouth & throat become
rough and parched, an
unquenchable thirst will arise
inflammation of the stomach
& intestines will be the conse-
quence, it will terminate in
Gangrene, distension of the
abdomen, fetid stools &
vomiting with the receipt

Poisons (116) mineral

In all cases of Poison from
arsenic or mercurated mercury
procure as soon as possible
an evacuation upwards by
means of a strong emetic

R^x Zinc. Vitriolat gr^o XV - ʒʒ
pule. Specue gr^o X -
miscer statim sumend^o in
vcl

R^x antimon tartarizat gr^o ij
zinc vitriolat gr^o X.

drinking freely afterwards
of digesting liquors such as
decoction of Barley, with Gum
arabic, Broths, lensed Tea
and milk in order to
sheathe the parts, fat bodies
ought to be interdicted.

Alkaline salts obviate the
effects of mineral poisons.

Dissolve an ounce of prepared
Kali in half a gallon of water
& give a Tea cup full often
Sulphuretted Kali will afford
great relief in cases of poison
from arsenic & take a Dram
misd in a pint of
warm water.

(117)
Poisonous Mineral

Bergman's test for detecting Arsenic. Infuse a portion of the suspected matter in a solution of vegetable Alkali after standing an hour or two pour upon the solution of sulphate of Copper, if any arsenic is present, the copper will be immediately converted into a beautiful green, and will soon be precipitated.

When a Person has swallowed sulphuric or nitric acid, he should immediately drink of lukewarm water to weaken the causticity of the Poison & then he may take a solution of half an ounce of prepared Kalk or clean pearl ashes in one pint of water, dividing it into six or eight draughts having neutralized the Poison with this solution or evacuated it by vomiting; then take large draughts of cows milk, should the burning pain in the stomach not subside.

In cases of having swallowed nails or pins, nitric acid diluted with water will be a powerful solvent.

Vegetable Poisons

Symptoms are giddiness, confusion of sight, weakness of the eyes, palpitations, loss of memory & voice, nausea vomiting, distension of the stomach, convulsions.

Remedy immediate evacuation by emetics and cathartics, 2nd drink copiously of liquors highly acidulated with sulphuric acid, juice of Lemons then rousing the system by a blister between the shoulders, & shaking the body when Opium is taken ~~with~~ give the Patient constantly with salt in different parts, should have an emetic of ʒi Dram of vitriolated zinc dissolved in ʒi ounce of water given immediately he may then take sulphuric acid, Lemon juice, with Ether continue the Purgation with Salt, and to stimulate the System give a spoonful of strong solution of ammonia

119.1
Verdial Pains

Symptoms of Persons affected
by deleterious fumes are
Head pain & neck swollen
eyes propped, tongue protruded
jaws closed, face livid,
lips blue, abdomen inflated
and appears to be in a poor
found sleep, convulsions
Remedy on discovery throw
the windows open & expose
the Body to cold air, sprinkle
the face with vinegar & the Body
with cold water, then rub the
skin with Flannel, or a soft
Brush, the temples & inside
of the nostrils to be stimulated
by applying volatile Spirit
& Bottles filled with warm
water applied to the soles
of the feet, also Glysters
consisting of vinegar and
water will be useful,
on the return of Life an
inclination to vomit should
be promoted by a feather
cup'd in oil, first symptoms
of a happy change, are
foaming at the mouth &
shivering of the whole Body

(120)
Animal Poisons

Persons bitten by venomous snakes in a few minutes become sick with cold sweats, & stupor. symptoms attend the introduction of the Rattle Snake into the Blood are nausea, a full strong pulse swelling of the whole Body eyes suffused with Blood, Bloody sweats, haemorrhage from the eyes, nose and ears chattering of the teeth.

Remedy. I apply a tight ligation above the wound to prevent the absorption of the virus, then suck the wound after use caustics, or cupping or excision. Soap lyes, soft luteal alkali & spirit ammoniac succinate are excellent applications, when the venom is absorbed excite perspiration by emetics, this is effected by taking two spoonfuls of the juice of Garden Rue every 2 Hours. Olive oil taken inwardly & outwardly.

Dr. Boay recommends the lunar caustic, as the Poison acts upon the Blood by subtracting its oxygen

(121) Suspended Animation

as soon as the Body is stran-
gulated or drowned coming
it as quietly as possible to
a House, wipe the Body, and
lay it between warm blankets
on the right side, bags filled
with warm sand or bricks heated
applied to the feet, doors and
windows thrown open, then
expand the lungs by inflating
with bellows down the nostrils
then rub the body with salt &
warm water & laund Cloths
increasing the degree of heat
as the symptoms of animation
seem to return, also apply
L. laund Cloths wrung out of hot
water to the heart & thorax.
it is customary also to stimu-
late the brain by applying volatile
salts to the nose, & rubbing the
temples with spirits of hartshorn
the means advised must be
persevered for 4 or 5 Hours.
on the smallest appearance
of respiration give wine or
cordials, the same is to be
observed in cases of torpor from
cold, only his nostrils temples
& stomach should be rubbed
with ammonia

122

Abortions

Abortions may happen at any period of pregnancy but mostly about the third or fourth month.

From the end of the third month to the period of quickening there is a greater susceptibility in the uterus to have its action interrupted than any other time. when a woman parts with her burden before the 7th month it is abortion, when after time it is labour.

The way to distinguish an approaching miscarriage from a visitation of the menses, the former arising from some fright & comes on suddenly the latter gradually.

The causes which give rise to floodings during pregnancy are violent exertions, lifting, severe exercise, dancing, walking, sudden surprise, fright, passion, longings, plethora, surges, debility, excessive venery, a diseased state of the uterus

Abortions¹²³ Abortions

floodings are more or less dangerous according to the stage of pregnancy, the farther advanced, the greater danger, as the mouths of the vessels are much enlarged, on the first appearance of flooding the woman should be confined to her Bed if copious quina operates combined with refrigerants

Rx Infus. Rosae ℥ij
nitri purific ℥ij
Tinct opii gutt xv M
fiat haustus 3^{tes} vel 4^{ta} hora
sumendus

Rx confectio opiat ℥ij
aq. menth sativ. ℥ij
Tinct cutibue

— Kino aa ℥ij Haustus
astringent injections, viz saturated
solution of alum, vitriolo lalid ℥ij
or cerussa acetata is proper
linen cloths wrung out in cold
vinegar & water to be constantly
applied to the back and pubes.
sometimes a course of Digitalis

Rx pulv. Digitalis
opii ana grs ʒij
conserv Rosae xij grs 4 hora
sumendus

if these fail take
The vitriol Cupri grs ʒij
aq Rosae — ℥ij
Tinct opii gutt x — capt
cochlear i 3^{tes} hora

(124)

Diseases of Pregnancy

The first stage of pregnancy is accompanied with a suppression of the menses, nausea & vomiting, heart burn, indigestion, lozings, giddiness, head ach, a slight cough, breasts enlarged, if vomiting should become very severe so as to threaten miscarriage take 2 or 3 table spoonfuls of the saline medicine, so that the effervescence may take place on the stomach, & the body kept open with some gentle laxative — if heart burn ensues!

Rx magnis. cast^{ae} ℥i
aq. pura — ℥ss
Spirit Cinnam ℥ij
aq. ammon. pura ℥i. M
cylis sumat Cochlear larg ij
℥℥ ij pro re natura.
for Costiveness

Rx elect^{io} senna ℥ij
Chryst. Tartar — ℥ij
puls. jalap — ℥ss
syrup Rose q. s. ft
electuarium cylis sumat mol
mala moschata hora somni
pro re natura — in itching
of the pubes keep the Bod open
& wash the parts with a diluted
solution of Lead

(1251)
Pregnancy

Cramps of the legs and
thighs are to be rubbed with
cold vinegar or camphor dissolved
in oil, when the stomach
is affected with spasms take
Ether & Tincture of Opium

Rx ag. Cinnaui ℥j
Ether Sulphur ℥j
Tinct opii gutt xx
Spt. Castor ℥ss
Spt. Carni ℥ss Haustus
ter quaterve die capiendus

If jaundice or bilious affection
prevail keep the Body open
with pills of Rhubarb &
Soap

in cases of convulsion
dependent on irritation
opium will be proper

Rx ag. Menth. Sativ. ℥j
Ether vitriolic - ℥ss
Tinct Castor - ℥j
opii. gutt. l.

miscce fiat Haustus
4. Sa vel 6. ta hora
repetendus

to prevent these Convulsions
keep the Body open by
cooling purgatives.

after (126) Pains

when they are so bad as
to deprive the Patient of his
rest have recourse to Opiates
and antispasmodics

℞ aq. Cinnamon
Tinct opii gutt XXXV
Castor ℥ss
Syrup viola ℥ij M
Haustus hora somni
sumendus

Flow of the Lochia
or flooding, usually
takes place after labor
produced by the removal of
the placenta, thereby laying
bare the mouths of the
Blood vessels in the uterus
if immoderate

℞ Infus. Rosa ℥ij
Nitri purific ℥ss
Tinct opii gutt XV
Haustus 3^{ta} vel 4^{ta} hora
sumendus
vcl

℞ Aluminis gr XV.
Opium Kerm gr V.
Opium — gr ss
conserv. Rosa grs pt
Bolus 6^{ta} hora cum
cochlear iij Infus Rosa

Tumours (127) of the Breasts

In the first appearance attempt discussion, the Body to be kept open with mild laxatives, febrile heat to be abated by refrigerants such as nitre & some antimonial pulvis antimonealis, & by constant outward application of linen cloths dipped in some sedative lotion

R aq ammon acet
Tpt. vini rectific
aq. distillat aa ℥ij

Phlegmatica dolens or painful intumescence of the lower extremities

R aq ammon. acet ℥ij
mistura Camphorat ℥ij
Syrup Papav — ℥ij M.
ft. Haustus hora somni
sumendus
ve

R Tinct opii gutt XL
vin. antimon gutt XV.
aq. pura ℥ij
Syrup scimpl ℥ij
misc

Morbi. (128) Infantum

Excoriations & Ulcerations,
from a neglect of cleanliness.
Children are apt to become
chafed in the neck behind
the ears & in the groins.

Remedy. bathe the parts with
warm milk & water, &
sprinkle them with Lapis
Calaminaris, where ulcera-
tions ensue, fomentations
of white Poppy heads boiled
in Milk will be beneficial
then apply an ointment
℞ Calomel ℥i
unguent. Sambuci ℥ij.

(Hiccups)

℞ pulv. Rhii grs iij
Crete — — — — — ℥ij

(when from acidity —)

if from nervous irritation

℞ Sp̄ ammon C. gutt v
ul

Tinct opii Camphor gutt vj

rub the stomach with
linimentum Saponis

(129)
Acidities Gripus & Flatulency

when the food becomes acid
on the stomach instead of being
properly concocted and converted
into chyle and blood, it gives
rise to crying hiccups vomiting
Diarrhoea, flatulency, sour
eructations, griping, pains,
& green stools. If acidity
prevail in a high degree
give one or two Teaspoonfuls
of antimonial Wine every
quarter of an hour till vomiting
then a few grains of Rhubarb
& Magnesia, or mistura
crotacea - when griping
is severe give

℞ creta preparat. $\mathfrak{z}\mathfrak{ij}$.

aq. menth. pip. $\mathfrak{z}\mathfrak{ij}$.

Tinct. Lavend. C. $\mathfrak{z}\mathfrak{ss}$.

Spt. Carui. — $\mathfrak{z}\mathfrak{ss}$.

Syrup Zingiber $\mathfrak{z}\mathfrak{ij}$.

mistura Caffes seu mat

cochlear minimum. duo

pro re nata adde ut

sit negetus.

Tinct opii gutt. x.

Vomiting

clear the stomach by a gentle
emetic, then give the salern
medicine in an effervescent
state with a Drop or two of
Tinct. opii

Infantum (30) Loosening

various cases on occasion
Diarrhoea in Children viz
unsuitable food, cold
or increased secretion of
Bile - in all cases it
will be proper to clear the
intestines by a few grains
of Rhubarb when that
is over give

℞ Creta preparat ʒij
aq. anethi -
Cinnamon aa ʒij
Tinct Cardamom ʒij
Syrup Cort aurantii ʒij M
capt. cochle. j Infantis his
terme die

repeat the Rhubarb at
intervals then

℞ confect. aromac ʒij
aq. pura
Cinnamon aa ʒij
Tinct Catechu ʒij
Opii gutt xij M
capt. Cochlear unum Infantis
terme meredii et
nocte

Food Flour, Sago or Rice
boild in Milk - also
Jelly

Aphthae 131) Thrush

It arises from acedities or
some derangement in the
alimentary canal. it
appears in the angles of
the lips first then on the
tongue and cheeks. it will
be proper on the first appear-
ance to give a gentle emetic
then a course of testaceous
powders - if costive a little
magnesia. if loose give
3 grains of the Compound
powder of Contayron
then Rhubarb and if a
robust Child add a few
grains of calomel.
to keep the mouth clean
give the following gargle

Rx decoct Flordii ℥iv.
Boracis pulv. ℥ij
aluminis ust ℥v
mellis Rosae ℥ij M
gargarismus
vel

Rx aq. Rosae ℥iij
pulv. Boracis ℥ij
mellis optimi ℥ij M
vel consorcio Rosae ℥ij
R. aluminis ℥ij
aque purae ℥iij
acid Sulphuricæ ℥ij

Prolapsus ani

In prolapsus ani considerable advantages have been experienced from a frequent use of astringent injections

Rx. conserv. Rosa ℥ss
aluminis ℥ss
aq. pura ℥iij
acid. Sulph. dilut gutt xv

Rx Cort. Querc. Contus ℥ij
aq. fontan. ℥viij
coque ad ℥iv calatim adde

Tinct. opii gutt xv. M
Should thus be kept some days
the fingers employed may be
smeared with the follow. oint

R. Pulv. gallar. ℥ij
adipis suad. ℥ij
opii — ℥ss. conquentum

Wearing Brash

begins with griping and purg
Stools of a green colour accor
panied with helious vomitg

R. pulv. Ipecac ℥j
Zingiber ℥vj
Colomel ℥ss
mis divid in chadulas iv
sumat j. singulis noctibus

(133)
Feething

If acidity prevails, it is to be obviated by the *mistura cretacea* or *magnesia*, if griping pains — carminatives such as carraway seed or a drop or two of *Solimanis* to be mixed with the food if costive, some mild

laxative as *oleum Ricini* & if violent startings, opiates must be resorted to a Teaspoonful of syrup *Papaveris albi* occasionally

Convulsions

when the disposition to convulsions continues after the Bowels have been cleared give antispasmodics such as castor-musk, oil of Anise, camphor, syrup of white Poppies & Laudanum — aq. Kali preparate given in Cases from 5 to 15 Drops & repeated every 10 Minutes is of use what are called inward fits are relieved by taking up the Child and giving it a few Drops of antispasmodic Wine

A

- Athritis Gout 38
 - Animatio suspensa 121
 - Apoplexia 52
 - Angina Pectoris 62
 - Asthma 63
 - Atrophia 71
 - Aphtha 75. 76
 - Anasarca 79. 80
 - Anaphrodisia 95
 - Amenorhea 99. 100
 - Abortion 122. 123
 - Acidities Infant 129
-

B

- Bronchocele 101
- Brush wearing 132

C

Cynanche 26. 27. 28. 29. 30

Croup 31 -

Catarrhus 50

Cramp - 58. 59.

Colica 64. 65

Cholera morbus 66. 67

Consumption Pulmonary 72. 73. 74

Chancres - 88.

Cephalalgia 102

Convulsions - 133

D

Dysenteria 51

Dyspepsia 54. 55

Diarrhea - 68. 69

E

Erysipelas. 20.

Enteritis - 35.

Exanthemata 40

Epistaxis. Bleeding of nose 44

Epilepsy - 57. 58

Eneurosis 96.

F

Febres 3. 4. 5

Febres synocha 6. 7. 8

Febres Typhus 9. 10. 11. 12. 13

G

Gonorrhoea 86. 87.
Gonorrhoea dormientum 96.
Gastrodynia 104. 105.

H

Hepatitis 36.
Hemoptisis spitting blood 45
Hematemesis vomiting Do. 46
Hæmorrhoids — 49 —
Hypochondriasis 56
Hysteria — 56. 57
Hiccups — 60. 128
Whooping cough 60. 61.
Hydrops — 78 79. 80.
Hydrocephalus — 81 —
Herpes — 109 —

I

Incubus — 70
Icterus jaundice 91. 92. 93
Ischuria — 98
Infantum morbi 128

L

Lues 89
Leprosy — 90.
Leucorrhœa 97.
Lymphiasis — 106. 107
Lochia — 126.

M

Morbilli 40

N

Nephritis 37.
Nymphomania 94

O
Ophthalmia 24.

Otitis inflamm^r. of the ear 25

Obstipatio 98.

Odontalgia - 103.

P
Phlegmasia 17. 18.

Phlegmon - 18. 19.

Phrenitis - 21. 22. 23.

Phurisy - 32

Pneumony 33. 34.

Pimplicus 43

Paralysis 53

Pyrosis - 61

Pyora Stch 110

Poisons 115. 116. 117. 118. 119 120

Pregnancy 124. 125.

Prolapsus ani - 132.

R
Rheumatism. 39 -

Rhachitis Rickets 82

S
Scarlatina - 41. 42.

Syncope 54

Tetofula - 83. 84.

Syphilis - 85.

Storlutus - 97 -

Suppression mensis 100. 101

Terrains - 105.

Scalds - 108.

T
Tympany 77.

Tussis - 133.

Urticaria - 44

Ulcus - 108

Vermet 111. 112. vomit 9. 129

17.0	17
8.2	16
7.0	15
5.8	14
5.6	13
5.4	12
5.2	11
5.0	10
4.8	9
4.6	8
4.4	7
4.2	6
4.0	5
3.8	4
3.6	3
3.4	2
3.2	1
3.0	0
2.8	
2.6	
2.4	
2.2	
2.0	

17
16
15
14
13
12
11
10
9
8
7
6
5
4
3
2
1
0

32
2
 16
80

Sept 19 7.0
 1915
 390

11/60
 192.0
12

4
 180

8
6.0
 5
 20

30
 160
20

Godfrey, leg^r

Tribaic lb ii

aq font lb ii

Tinct. opii ℥ i

℞. Sassafras 30 gr

Cordial Infants
Gripes

Paregoric ℥ ss

Tinct Cinnamon ℥ ss

Simple Syrup ℥ 4

aq fontane ℥ 4

to 1 ℥ of ^{the above} put 13

for purging or vomiting
in infants -

or putres Cinnamon

pule - Cret aq

& cochl. Theana

Luis Ven -

pill Hydrargi 3i

divid in pill xii - cap

2 note 1 mane











has been for some time affected
with *Coryza* particularly when
he bows his head down
or when walking is attended
with stupor and pain at
the back of the neck, but
none in the head, when
very *Coryza*, he is affected
with *Phimosis* in the eyes, so
that if he be attending to
his work, he is obliged to
desist, while the discharge
ceases. He has attended
too closely to business, being
assisted Manufacturer, &
has frequently lifted heavy
weights, has been used to
riding much on horseback
has been temperate in living,
tho' fond of food highly
seasoned with spices, he
has not much discharge
from the nostrils if any
he also appears to have
a slight affection of the
left complains of pain on
the right side below the
region of the Stomach, which
increases on pressure
has a nausea at sometimes
throws up after eating, food
that is warm affects him
more than cold.

Gabine draught
Potash Carbon ℥ij - ℥ij
Tinct Lavend ℥ij
Ether Sulph ℥i
aqu menth pip ℥vij
capt cochl. ij magu
cum coch ij acid
acid Citra ℥ij - ℥j
aq ℥vij
tertius horis
Mij Gardener

Kali ℥i
Succi Lemou ℥ij

Nomenclature

New names	Former names
Acidum Aceticum	Acetum Distillatum
Benzonicum	Flores Benzoi
Meriatricum	Spiritus Salis
Nitricum	Aqua fortis
Sulphuricum	Acidum Vitrolicum
Ammonia Carbonas	Ammonia preparata
Ammoniac Acetates	aqua Ammon. acet
Ammoniac aqua	Spirit Sal. ammon.
Ammoniac liquor	aqu. ammoniac purae
Ammoniac Murias	Sal. Ammoniacus
Potassa Acetas	Kali acetalum
Sulphate of potass	{ Sal. Diureticus
Potassa cum calce	{ Kali Vitrolicum
" fusa	{ or Vitrolic Tartar
" Nitras	Calca cum Kali puro
" Subcarbonas	Kali purum
" Tartras	Nitrum
" Sulphuratum	{ Kali preparatum
" Supertartras	{ Salt of Tartar
" Super sulphate	{ Kali Tartaric
" Carbonate	{ Soluble Tartar
" liquor subcarbonate	Sulphuratum
" liquor	Tartari Christoffi
" fusa	Sal. emeticum
" cum Calce	Azate Kali
Antimonii Sulphuratum	Lixivium Tartari
" Oxydum	Aqua Kali puri
" Tartarizatum	{ Kali purum
" liquor Tartarizatum	{ Tapis infernalis
" Murias	Calca cum Kali pura
Antimonii Sulphuratum	{ Causticum commune
" Oxydum	regnes. infernal
" Tartarizatum	Antimonium
" liquor Tartarizatum	Crocus Antimonii
" Murias	Tartar emetic
	vinum Antimonii
	Butter of Antimony

New names	former names
Argentī nitras	Argentum nitratum vel causticum venare
Arsenici Oxid	Arsenic
Cuprum ^{Sulphuret} Ammoniatum	Orpiment
liquor Cupri Ammoniat	aqua Cupri ammon vel Aqua Sappharina
Ferrium Ammoniatum	Ferrium Ammoniac vel Flores martiales vel Cus Venenis
Ferri carbonas	Ferri Rubigo vel Chalibis Rubigo
Ferri Sulphas	Ferrium vitriolatum vel Sal martis Copperas vel
Ferrium Tartareizata	
Tinctura Ferri Ammon-	Tine. Florum martis
Tinctura Ferri Martialis	Tine. Martis in Spiritu salis
Vinum Ferri	Vinum Chalibiatum
Hydrargi Oxymurias	Corrosive Sublimat
Hydrargus concretus	Mercur. alkalizatus
submaris	Calomel
nitrico Oxid	Mercur. Corrosiv Ruber vel Red precipitate
oxid cinereum	
oxydum Rubrum	Hydrargus calcenata vel Red. violent emita
Precipitatus albus	Calc. Hydrargi alba vel White precipitate
Purificatus	argentum vis purificata
Sulphuratum	Hydras Sulphur. Ruber vel Vermeilion
Rubrum	

new names	former names
Liquor plumbi acetatis	aqua lithargi acetatis vel Goulard's extract
Plumbi Superacetat	Cerussa acetata vel Sacharum Saturni
Carbonas	Cerussa
oxy. semivitreum	Litharge
aqua Plumbi acetatis Dilutes	aqu. lithargi acetatis compositus
Calamina prep.	
Zinci Oxidum	Zincum calcinat
Sulphas	Zincum vitriol white vitriols
Magnesia	Magnesia usta
" Carbonas	" alba
" Sulphas	Magnesia vitriolata vel Epsom salts
Soda Tartarizata vel ^{acid} Potatron Tartariz. &	Natrou Tartariz. &
" Sulphas	Natrou Vitriolatum vel Glauber's salts
" Subcarbonate	Natrou preparatum
carbonate	
Boras	Borax
Murias	Sal muriaticus
calx	Zinc
Liquor Aluminis com Carbonate of Lime	aqua alium comp Chalk
Sulphate of Lime	Paris plaster
" of Alumin & potas	Alum
of Barytes	Spar
Copper	Blue vitriol

P. H. Anton. Steh

3.

Vin Anton. T. 34

First Opü. Lang

3.

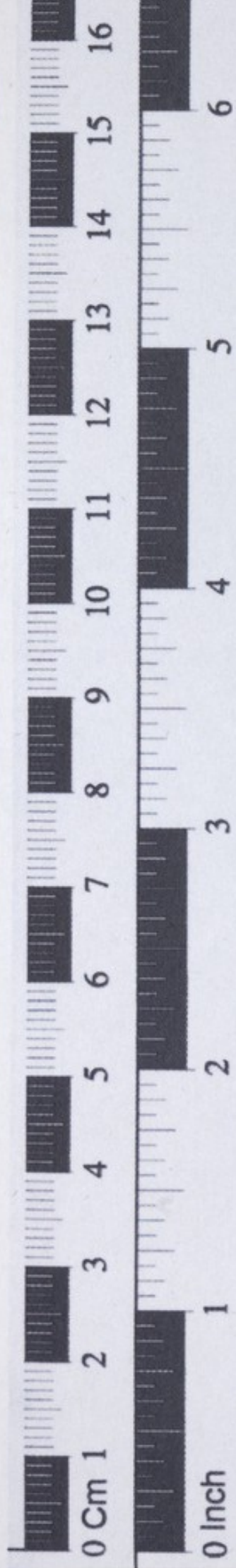
H. M. Lak

div

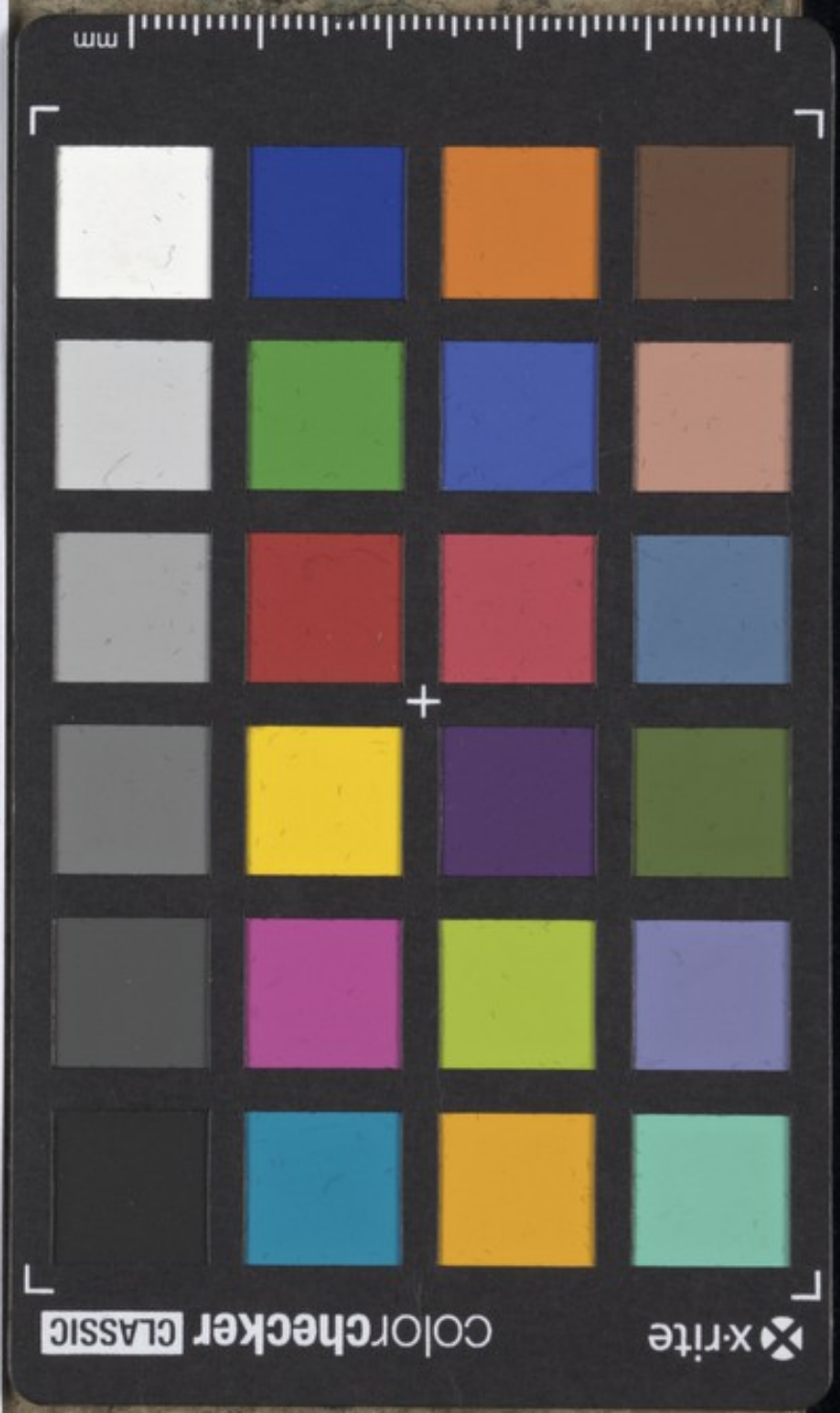
Sumat cork y

mag. his tree

del



The Wellcome Library





The Wellcome Library

*to eye
on acetab
ps ext Saturn*



*vi. 9. 15
s. pile xxx
hora. Somni*