

**Album of photograph and souvenirs, produced for the testimonial banquet to Henry Morton Stanley for "heroic achievements in the cause of humanity, science and civilization", containing photographs of Stanley, Lieutenant W.G. Stairs, Surgeon Thomas H. Parke, Captain R.H. Nelson and Mr. A.J. Mounteney-Jephson**

**Publication/Creation**

1890

**Persistent URL**

<https://wellcomecollection.org/works/u6xgg2d7>

**License and attribution**

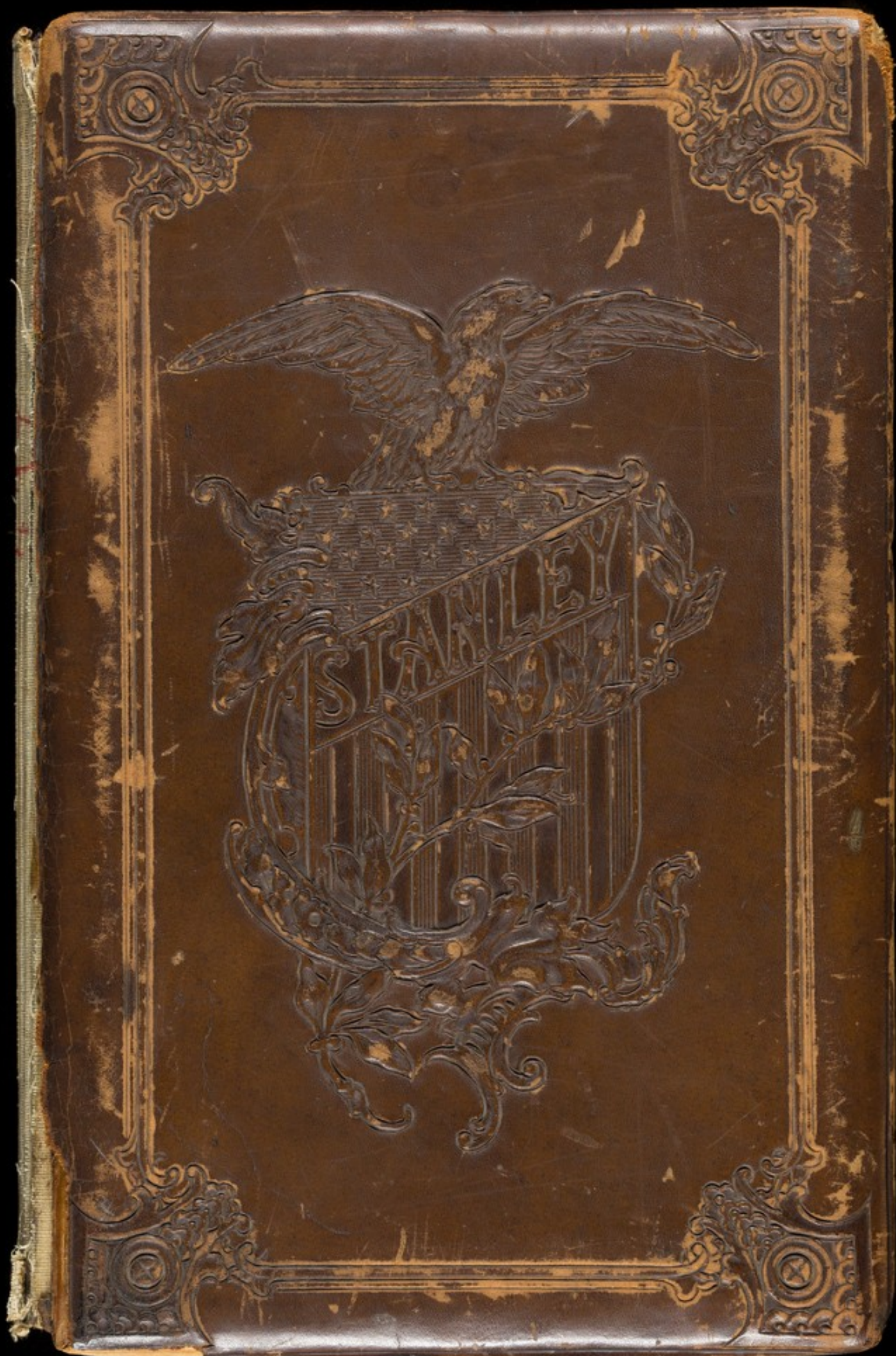
You have permission to make copies of this work under a Creative Commons, Attribution, Non-commercial license.

Non-commercial use includes private study, academic research, teaching, and other activities that are not primarily intended for, or directed towards, commercial advantage or private monetary compensation. See the Legal Code for further information.

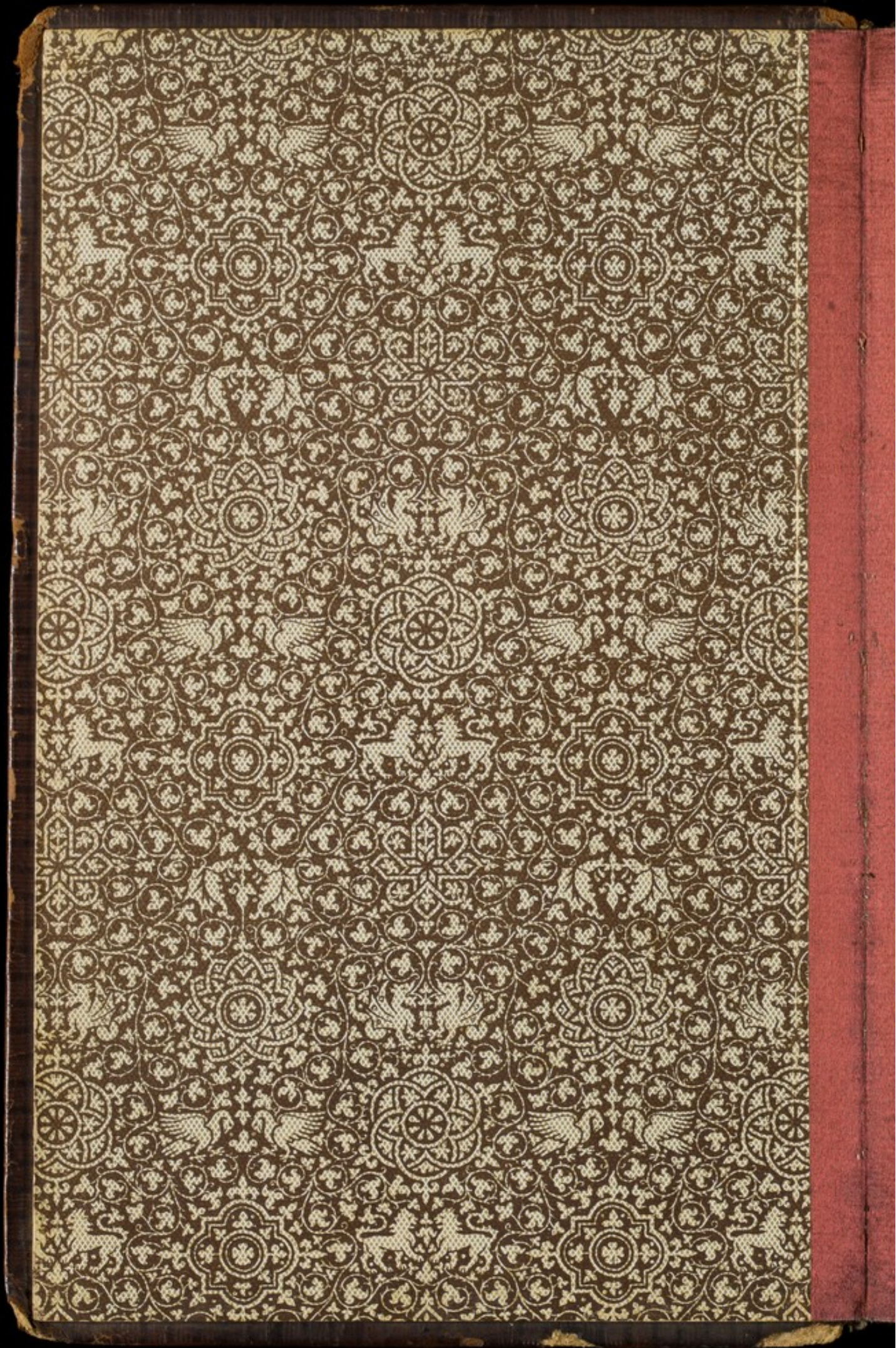
Image source should be attributed as specified in the full catalogue record. If no source is given the image should be attributed to Wellcome Collection.



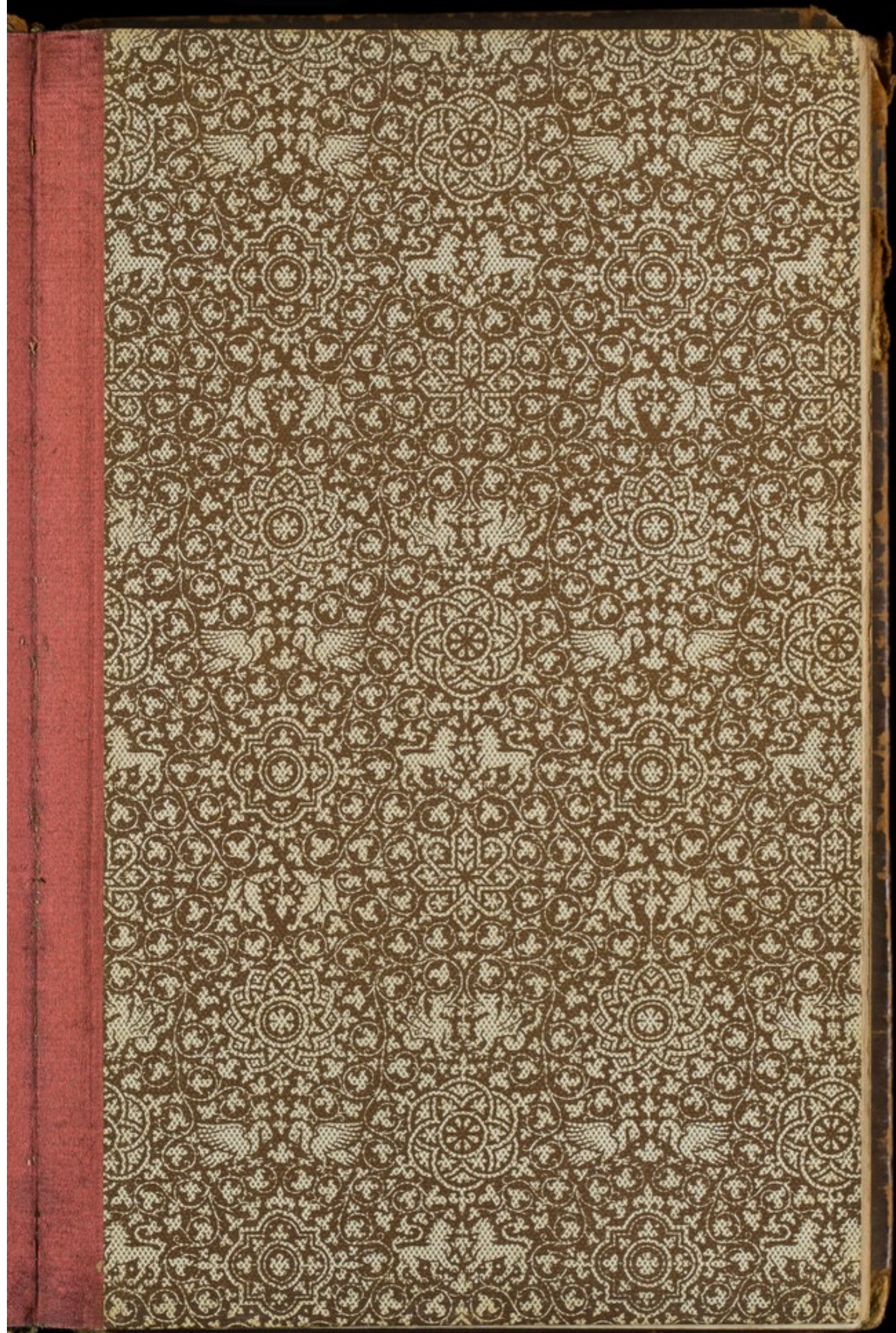
Wellcome Collection  
183 Euston Road  
London NW1 2BE UK  
T +44 (0)20 7611 8722  
E [library@wellcomecollection.org](mailto:library@wellcomecollection.org)  
<https://wellcomecollection.org>













497

R.A.M.C. HISTORICAL MUSEUM  
MUNIMENT ROOM,  
R.A.M. COLLEGE,  
MILLBANK, S.W.1.



*The  
American Testimonial  
Banquet  
to  
Henry M. Stanley.*

*In recognition of his Heroic  
Achievements in the cause of  
Humanity, Science & Civilization,  
and*

*A Greeting  
to  
His Chief Officers.*

*Portman Rooms, London.  
May 30<sup>th</sup> 1890.*

*The Hon. Geo. C. New.*

CHAIRMAN.

*Geo. Shepard Page, Esq.*

VICE CHAIRMAN.



# COMMITTEES:

Chairman: HON. JNO. C. NEW, *U. S. Consul General.*

PAUL B. DU CHAILLU, Esq.	GEO. SHEPARD PAGE, Esq.
LT. COM'DR. W. H. EMORY, <i>U. S. Naval Attaché.</i>	E. L. SHELDON, Esq.
HIRAM S. MAXIM, Esq.	MAJOR JAMES C. POST, <i>U. S. Military Attaché.</i>
EDMUND J. MOFFAT, Esq., <i>Agent U. S. Dept. Agriculture.</i>	HENRY WHITE, Esq., <i>Sec'y U. S. Legation.</i>

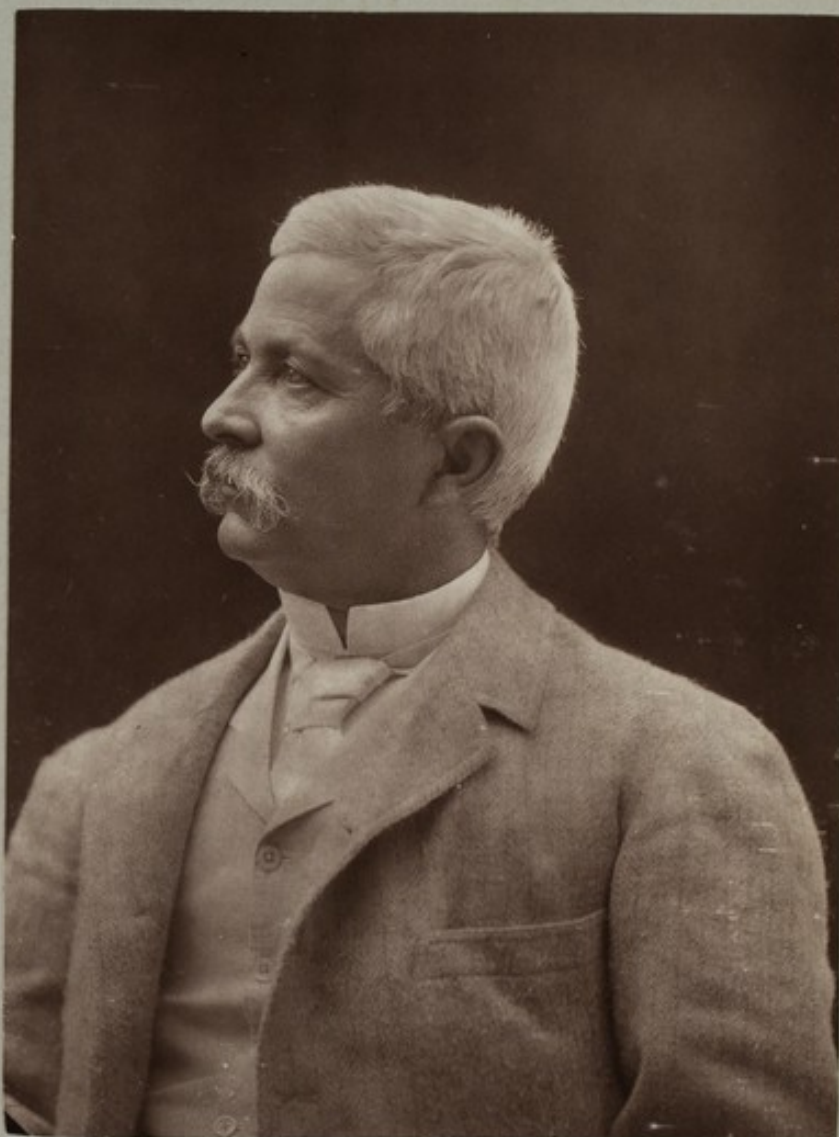
HON. JNO. RUSSELL YOUNG.

Honorary Secretary: HENRY S. WELLCOME, Esq., Snow Hill Buildings, E.C.

## HONORARY MEMBERS:

J. N. ARONSON, Esq.	JOHN G. MEIGGS, Esq.
P. T. BARNUM, Esq.	JAMES R. OSGOOD, Esq.
L. W. BROWN, Esq. <i>U. S. Consul, Glasgow.</i>	G. W. PARKER, Esq.
THOS. BURNSIDE, Esq.,	DILLWYN PARRISH, Esq.
COL. W. H. CHESEBROUGH.	F. C. PENFIELD, Esq.
COL. GEO. EARL CHURCH.	HOWARD POTTER, Esq.
WALTER DEL MAR, Esq.	ALEXR. M. REID, Esq., <i>U. S. Consul, Dublin.</i>
HAROLD FREDERIC, Esq.	COL. W. H. REYNOLDS.
WM. A. GIBSON, Esq.	J. MORGAN RICHARDS, Esq.
COL. J. T. GRIFFIN.	EDWD. C. SANXAY, Esq.
D. C. HALDEMAN, Esq.	ISAAC SELIGMAN, Esq.
MAJOR E. J. HALE.	THOS. H. SHERMAN, Esq., <i>U. S. Consul, Liverpool.</i>
BRET HARTE, Esq.	J. FISHER SMITH, Esq.
H. L. HORTON, Esq.	B. F. STEVENS, Esq., <i>U. S. Dispatch Agent</i>
J. JARRETT, Esq., <i>U. S. Consul, Birmingham.</i>	THOMAS STEVENS, Esq.
OLIVER R. JOHNSON, Esq., <i>U. S. Vice Consul-General.</i>	MAJOR HENRY VAN DER WEYDE.
MAJOR EVAN R. JONES, <i>U. S. Consul, Cardiff.</i>	RICHARD S. WARING Esq.
JOHN T. LORD, Esq.	ARTHUR WARREN, Esq.
COL. HENRY MCCOY.	F. MARSHALL WHITE, Esq.
	J. MCNEIL WHISTLER, Esq.
	JAMES WILSON, Esq.





JOHN FERGUS.

Copyright

Cannes, France &  
Largo, Scotland.

*Henry M. Stanley*

HENRY M. STANLEY.

"With Devotion to Duty.

"Served in the Magdala and Ashantee Campaigns;

"Found and Relieved Dr. Livingstone;

"First Circumnavigated the Great Lakes of Central Africa.

"First Revealed the Extreme Southern Sources of the Nile;

"Discovered the Albert Edward Nyanza;

"First traced the Congo to the Sea;

"Created the Congo Free State;

"Discovered the Mountains of the Moon

"and Rescued Emin Pasha."





MERRY VAN DER WEYDE.

Copyright.

102, REGENT STREET, W.

*W. G. Stairs*

LIEUTENANT W. G. STAIRS, R.E.

"One of those rare personalities, oftener visible among military men than among civilians, who could obey orders without argument, who could accept a command, and without ado or fuss execute it religiously.—Courageous, careful, watchful, diligent, and faithful."—STANLEY.





HENRY VAN DER WEYDE.

Copyright

102, REGENT STREET, W.

*T. H. Parke*

SURGEON THOMAS HEAZLE PARKE, ARMY MED. STAFF.

"I consider this expedition in nothing happier than in the possession of an unrivalled physician and surgeon, Dr. T. H. Parke, of the A.M.D. —'Loyal and devoted services gratuitously.'—Skilled as a physician, tender as a nurse, gifted with remarkable consideration and sweet patience.—Every white officer in the expedition, Emin Pasha, Captain Casati, and the Egyptian officers and all are indebted to him."—  
STANLEY.





Copyright

HENRY VAN DER WEYDE.

102, REGENT STREET W.

*Robert Henry Nelson*

CAPTAIN ROBERT HENRY NELSON.

"Consistent zeal to duties.—High soldierly qualities, proving to what a pitch of devotion a highly honourable man can carry his ideas of duty.—A devotion to duties, an intelligence to comprehend, an obedience without cavil, a zeal which never flagged to perform and endure whatever task was put before him."—STANLEY.





Copyright.

HENRY VAN DER WETDE.

102, REGENT STREET, W.

*A. J. Mounteney-Jephson.*

MR. A. J. MOUNTENEY-JEPHSON.

"Distinguished by his untiring industry and indefatigable zeal and unique service to the expedition,—devotion and chivalrous kindness to Emin Pasha. An indomitability of spirit, courage, and celerity of movement.—Faithful and obedient."—STANLEY.



#### THE STANLEY TESTIMONIAL SHIELD.

This Shield, of classical outline, is 2 ft. in height, and weighs several hundred ounces, it bears in the centre an American Shield, the Stars and Stripes indicated by varied texture of the metal. Upon this American Shield is overlaid a relief map of the Dark Continent in oxydised silver. The Lakes and Rivers and Dotted Route Lines, representing Mr. Stanley's various journeys, inlaid with gold. The American Eagle at the top of the Shield holds a medallion portrait of Stanley encircled by a wreath of laurels, and also holds a wand bearing the golden "Star of Duty."

#### SCENES DEPICTED.

On the right a circular Abyssinian Shield plumed with Lion's mane, paw and tail, Jewelled Clasp bearing design, Lion of Judah and Solomon's Seal and various Trophies. Scene: The fall of Magdala. Lord Napier and Stanley in the foreground.

To the left an Ashantee Shield with Golden Ram's Head, Battle Axe, Wasp's Nest and other Trophies. Scene: Critical moment at Village Eganassie; battle of Amoaful. Lord Wolseley and Stanley in the foreground.

Large scene, top left hand corner. Stanley finds and relieves Livingstone at Ujiji, Lake Tanganika.

Scene below.—Stanley discovers the Southernmost sources of the Nile, Suna south of Victoria Nyanza. Journey through Dark Continent.

Scene below.—Tippoo Tib, the Slave and Ivory Trader, at Mana Mamba, warns Stanley of the perils of the Congo.

Scene following.—Stanley traces the Congo to the sea in his boat the "Lady Alice." Attacked by cannibal tribes and imperilled by cataracts.

Scene to the right.—Vivi. Stanley with his Fleet of Steamers founding the Congo Free State. He shivers a huge boulder with a sledge hammer, is named by natives Bula Matari,—The Rock-breaker, the all-powerful,—the name by which he is now known through all Africa.

Scene above.—Emin Relief Expedition. Stanley attacked by the Wambutti Dwarfs, Stairs wounded, Parke attending wounded native, Nelson and Jephson supporting bill hooks who are carving a way through the forest. A native blazing a tree to guide Bartelott.

Scene top right-hand corner.—Stanley rescues Emin, traces the Similiki to its source, discovers the M't's. Moon, and confirms his previous discovery of Albert Edward Nyanza. Expedition arrives shore Albert Edward Nyanza. Stanley heads column. Gunbearers at side. Emin follows with Casati at his side. Hammock bearers carrying Emin's daughter Ferida, Surgeon Parke attending her. Stairs sketching M't's. Moon, Nelson and Jephson taking observations. Dwarf leading native goat, and about fifty types of natives, men, women and children, with typical accessories, maxim gun, loads, etc., etc.

Camp Scene above.—Stanley encounters starvation. His officers return empty handed from the hunt. His foragers return with but a few handfuls of fungi, beans and pepper leaves in their aprons to feed hundreds of starving men. Randy captures the guinea fowl.

The photograph is taken from a hasty water-colour sketch of the unfinished shield, and several of the important details are omitted or incorrect. Every prominent figure on the shield is a special study, and represents a personality or a type. Every accessory has special significance.

#### TRIBUTE MEDALLIONS TO STANLEY'S CHIEF OFFICERS,

bearing Replica of Stanley Portrait as on the shield, with inscription

"Never while human nature remains as we know it will there be found four gentlemen so matchless for their constancy, devotion to their work, earnest purpose, and unflinching obedience to honour and duty."—STANLEY.

On the reverse, portraits of the Officers in bold relief, map of Africa at top with outline route of the expedition. Scenes—Forest, M't's. Moon and Battle.

The designs for the shield and medallions are by Henry S. Wellcome.

The shield has been wrought with keen sympathetic interest and feeling by Messrs. Elkington and Co. The work has been carried out under the hand and direction of their repoussé artist, Mr. F. Courthope.





PHOTOGRAPHED BY VAN DER WEYDE FROM ROUGH SKETCHES.

# SHIELD AND MEDALLIONS.

DESIGNED AND COPYRIGHTED BY HENRY S. WELLCOME, 1890,  
AND WROUGHT IN FINE SILVER BY  
ELKINGTON & CO., LONDON.



## MENU.

---

### HORS D'ŒUVRES VARIÉS.

---

### POTAGES.

CONSOMMÉ À L'IMPÉRIALE.      PURÉE DE TOMATES.

---

### POISSONS.

SAUMON AU CONCOMBRE, SAUCE HOLLANDAISE.  
BLANCHAILLES AU NATUREL ET À LA DIABLE.

---

### ENTRÉES.

PETITES TIMBALES DE FOIE GRAS AUX TRUFFES.  
CHAUD-FROID DE MAUVIETTES EN BELLEVUE.

---

### RELEVÉS.

CHAPONS BRAISÉS À L'ESTRAGON.      JAMBON, SAUCE MADÈRE.  
QUARTIER D'AGNEAU, SAUCE MENTHE.  
SALADE À LA FRANÇAISE.      POMMES DE TERRE.  
HARICOTS VERTS.      ÉPINARDS AU JUS.

---

### RÔTS.

CANETONS AUX PETITS POIS.      CAILLES BARDÉES.

---

### ASPERGES À L'HUILE.

---

### ENTREMETS.

PÂBAS À LA STANLEY.      GELÉES DE FRUITS AU MARASQUIN.  
DAMES D'HONNEUR.  
GLACES À LA MONT DE LA LUNE.

---

### DESSERT.

CAFÉ NOIR.

---

### WINES.

SHERRY. CHABLIS. CLARET. CHAMPAGNE. PORT LIQUORS.

---

### CIGARS.

COHEN'S BOCH DIVINOS.



## TOAST LIST.

### "THE QUEEN, THE PRINCE AND PRINCESS, AND OUR PRESIDENT."

Proposed by Sir CHARLES TUPPER, High Commissioner for the Dominion  
Canada, and THE VICE CHAIRMAN.

### "OUR CHIEF GUEST."

Proposed by THE CHAIRMAN.

Presentation of the American Flag and "Stanley Shield."

Response by HENRY M. STANLEY.

### "STANLEY'S CHIEF OFFICERS."

Proposed by PAUL B. DU CHAILLU.

Presentation of the Four Silver Medallions.

Response by Lieut. STAIRS, Surgeon PARKE, Captain NELSON and  
Mr JEPHSON.

### "EXPLORATION."

Proposed by Sir MOUNTSTUART GRANT DUFF, President of the Royal  
Geographical Society.

Response by Colonel GRANT and Commander CAMERON, R.N., C.B.

### "THE PRESS."

Proposed by Sir RICHARD TEMPLE, Bart.

Response by CHARLES WILLIAMS and WILLIAM SENIOR.

### "THE CHAIRMAN."

Proposed by Professor GILMAN, President of the Johns Hopkins University

Response by THE CHAIRMAN.

## Programme of Music

TO BE PERFORMED BY THE

### BAND OF THE GRENADIER GUARDS

(By permission of Colonel Trotter),

Under the Direction of Lieut. Dan Godfrey.

- |  |     |     |                            |     |                  |
|--|-----|-----|----------------------------|-----|------------------|
| 1. MARCH   | ... | ... | "Au Secours"               | ... | Vandervell.      |
| 2. OVERTURE  | ... | ... | "Le Domino Noir"           | ... | Außer.           |
| 3. IDYLL   | }   | ... | "Blümchen der Einsamkeit"  | ... | Bach.            |
| INTERMEZZO   |     | ... | "Loin du Bal"              | ... | Gillet.          |
| 4. SELECTION   | ... | ... | "The Gondoliers"           | ... | Sullivan.        |
| 5. The "GUARDS" WALTZ  | ... | ... | ...                        | ... | D. Godfrey.      |
| (Played by the Band of the Grenadier Guards in Boston and New York, 1872). |     |     |                            |     |                  |
| 6. OVERTURE  | ... | ... | "The Octoroon"             | ... | Benedict.        |
| 7. CORNET SOLO   | ... | ... | "In the Starlight"         | ... | D. Godfrey, Jun. |
| SERGEANT KNIGHT.   |     |     |                            |     |                  |
| 8. VALSE   | ... | ... | "Ange d'Amour"             | ... | Waldenfel.       |
| 9. SELECTION   | ... | ... | "Ruy Blas, the Blasé Roué" | ... | Meyer Lutz.      |
| 10. STÜNDCHEN  | ... | ... | ...                        | ... | Schubert.        |

AND PATRIOTIC AIRS.



