

Report on and details of the plans of the Victoria Military Hospital at Netley, on the Southampton Water, and programme of the ceremony of laying the foundation stone

Publication/Creation

1856

Persistent URL

<https://wellcomecollection.org/works/x8w75up5>

License and attribution

You have permission to make copies of this work under a Creative Commons, Attribution, Non-commercial license.

Non-commercial use includes private study, academic research, teaching, and other activities that are not primarily intended for, or directed towards, commercial advantage or private monetary compensation. See the Legal Code for further information.

Image source should be attributed as specified in the full catalogue record. If no source is given the image should be attributed to Wellcome Collection.



Wellcome Collection
183 Euston Road
London NW1 2BE UK
T +44 (0)20 7611 8722
E library@wellcomecollection.org
<https://wellcomecollection.org>

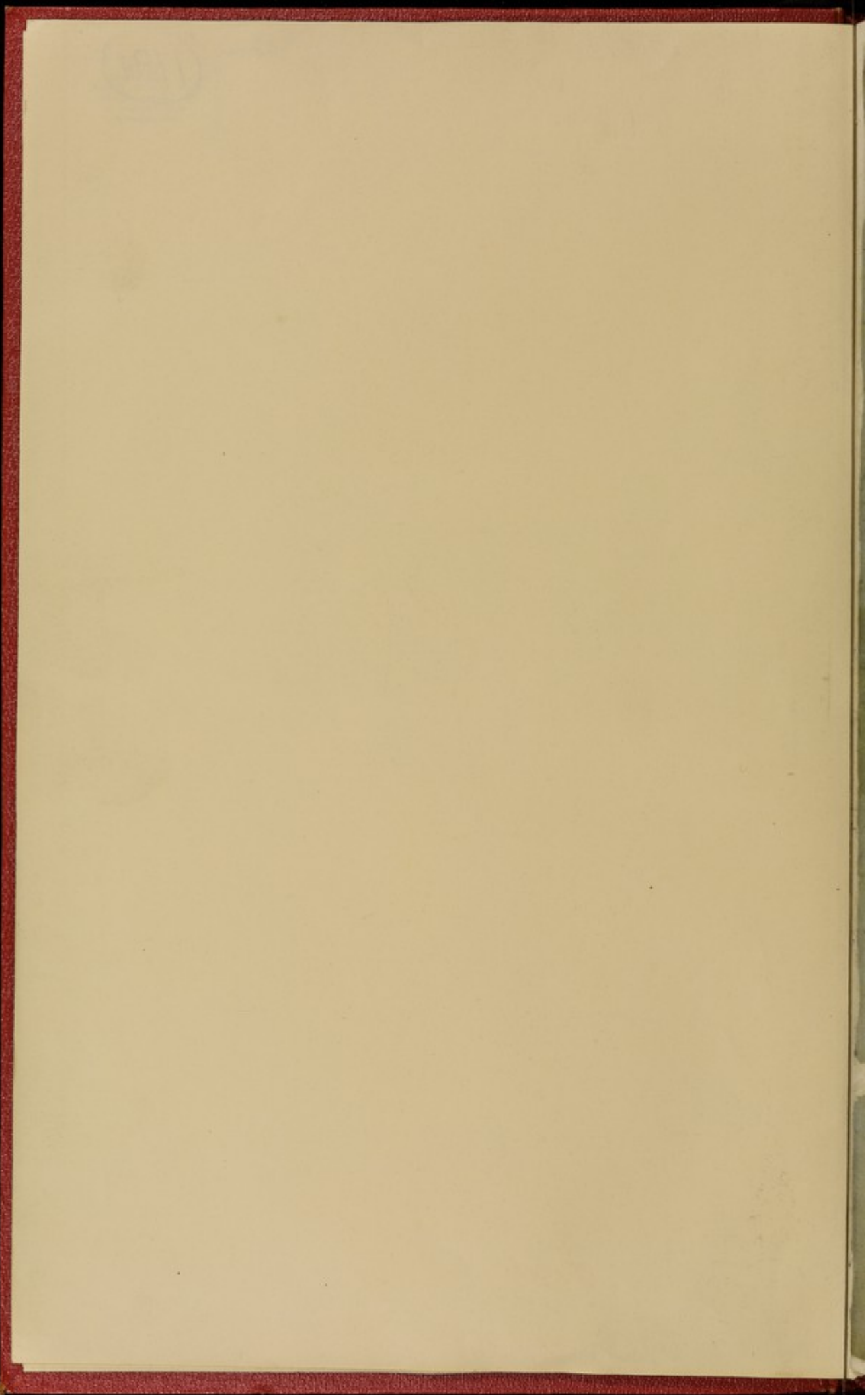
REPORT
ON
NETLEY HOSPITAL

No. 878

R.A.M.C. Historical Museum
Keogh Barracks, Ash Vale
Nr. Aldershot, Hants.
Aldershot—544

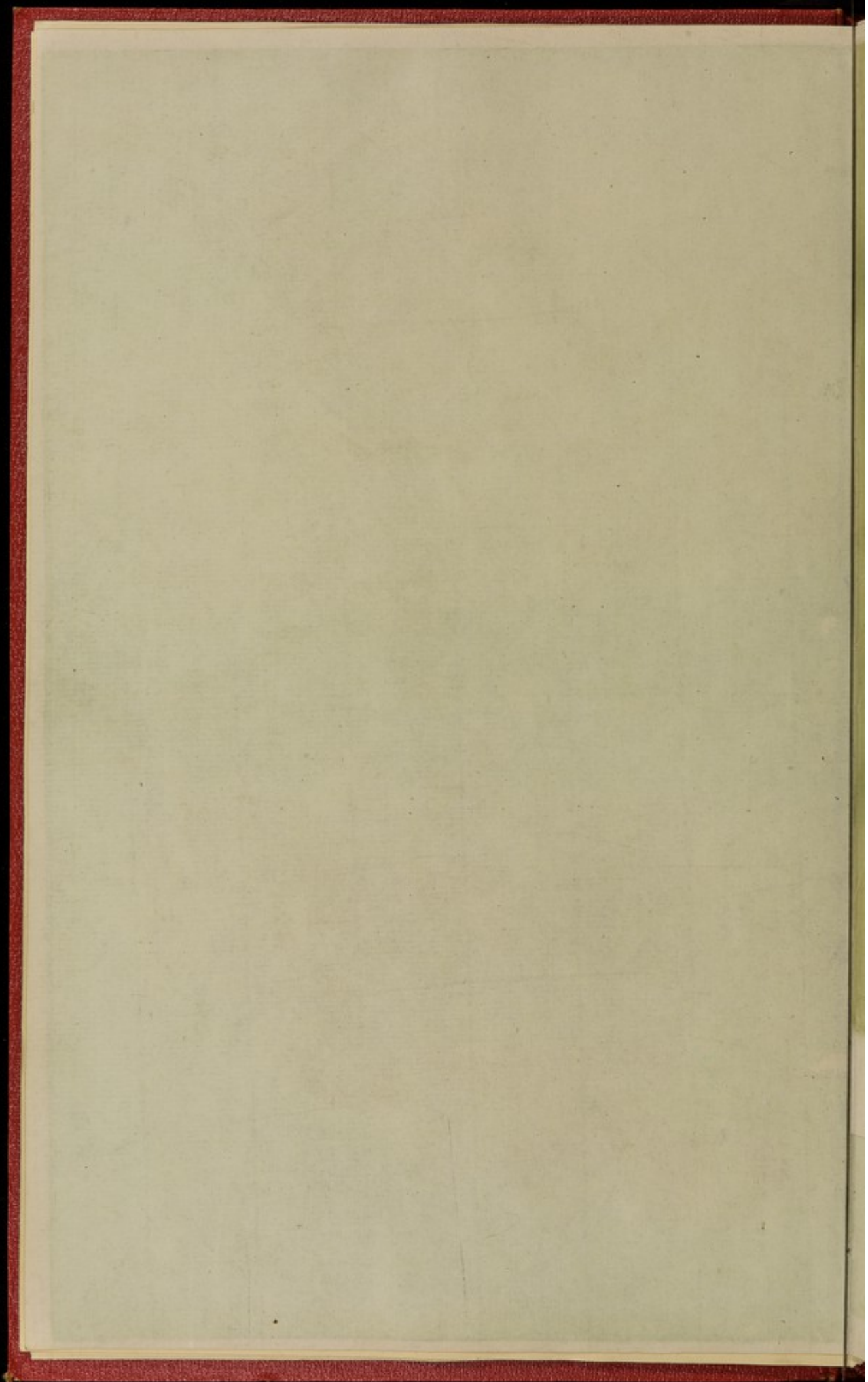
RAME

1191



REPORT
ON
AND DETAILS OF THE PLANS OF
THE
VICTORIA MILITARY HOSPITAL,
AT NETLEY, ON THE SOUTHAMPTON WATER.

PRINTED AT THE WAR DEPARTMENT. MAY 1856.



PRAYERS

TO BE USED ON THE OCCASION OF LAYING

THE FIRST STONE

OF

THE ROYAL VICTORIA HOSPITAL AT NETLEY,

BY

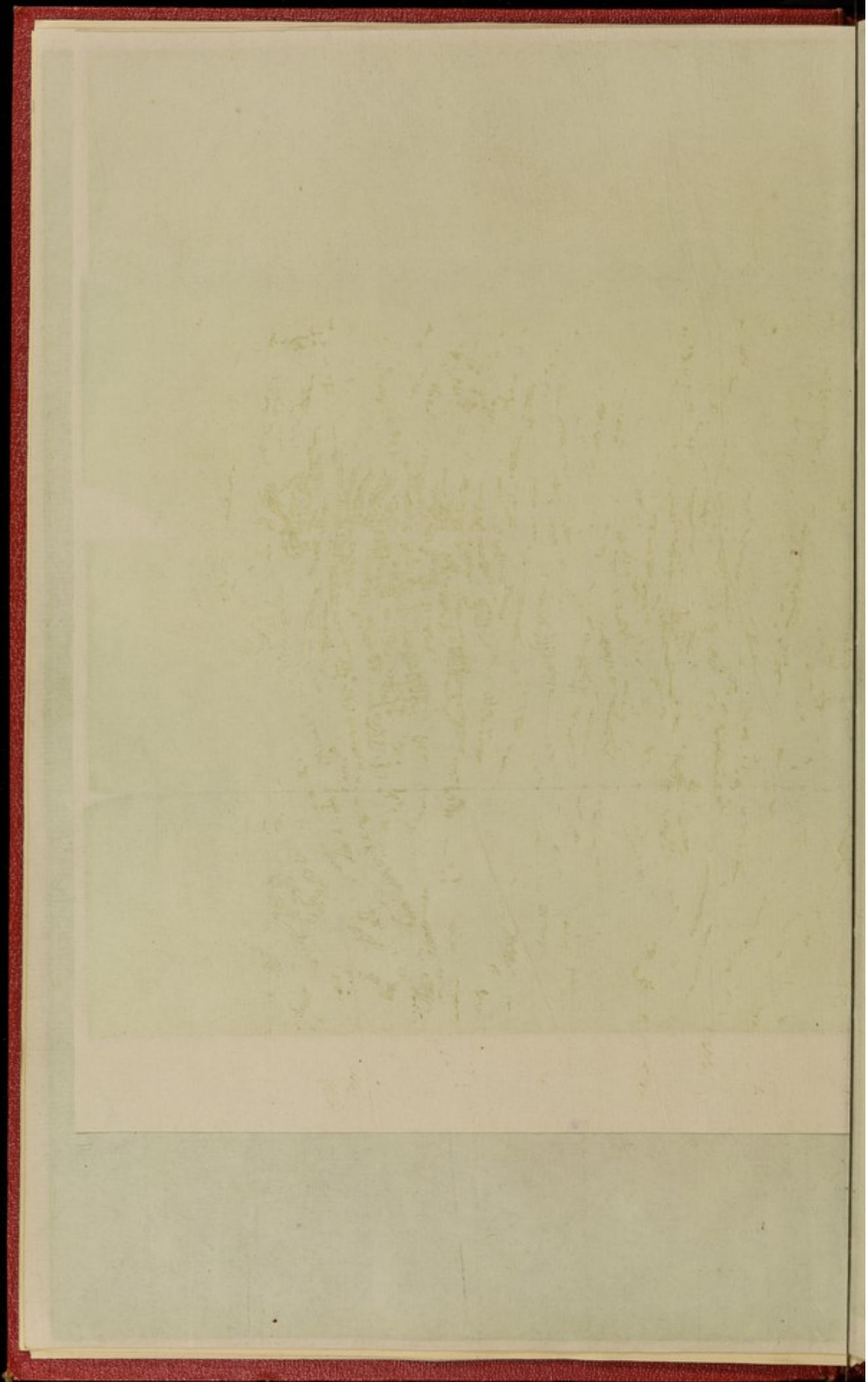
HER MAJESTY THE QUEEN.

PREVENT us, O LORD, in all our doings, with Thy most gracious favour, and further us with Thy continual help; that in all our works begun, continued, and ended in Thee, we may glorify Thy holy name, and finally, by Thy mercy, obtain everlasting life, though JESUS CHRIST our Lord. *Amen.*

O LORD our God, who hast taught us in Thy Holy Word, that except Thou build the house, their labour is but lost that build it, grant Thy blessing, we beseech Thee, to direct our undertaking, and prosper the work of our hands upon us. Be Thou gracious, O LORD, unto such as hereafter shall be the inmates of this House of Healing; make them not afraid for the pestilence that walketh in darkness, nor for the sickness that destroyeth in the noon-day; give Thy angels charge over them to keep them in all their ways; hear them when they call upon Thee; yea, be Thou with them in all their trouble, in the day of sickness, and in the hour of death; deliver them, and show them Thy salvation. Grant, finally, that all they to whom Thou shalt see fit to restore the blessing of health, may pass the rest of their lives with thankful hearts and a loyal spirit, and ever be devoutly given to serve Thee in good works to the glory of Thy name, through JESUS CHRIST our Lord. *Amen.*

THE Peace of GOD, which passeth all understanding, keep your hearts and minds in the knowledge and love of GOD, and of His Son JESUS CHRIST, our Lord; and the Blessing of GOD ALMIGHTY, the Father, the Son, and the Holy Ghost, be amongst you, and remain with you always. *Amen.*

His Royal Highness the Prince, and the Secretary of State; and the box being then closed, Her Majesty will place it in the cavity of the stone.



Programme of the Ceremony to be observed on the occasion of Her Majesty the Queen's laying the First Stone of the Royal Victoria Hospital, at Netley, on Monday next, the 19th instant.

It is expected that the Queen will land at the Jetty at 11 o'clock, A.M.

A Guard of Honour will be drawn up to receive Her Majesty.

On landing, Her Majesty will be received by the Secretary of State for the War Department, the Port Admiral of Portsmouth, and the General Commanding the South Western District.

The Royal Standard will be hoisted on a Flag Staff, and Military Bands will play the National Anthem.

Her Majesty will receive upon the Jetty an Address from the Mayor and Corporation of Southampton, which will be presented to Her Majesty by the Mayor, and handed by the Queen to the Secretary of State.

The Queen will then be conducted to the place prepared for Her Majesty, preceded by the Officers, Military and Naval, in attendance upon the General and Admiral, by the General and Admiral, the High Sheriff, and the Lord Lieutenant of the County, the Bishop of the Diocese, and the Secretary of State, and followed by the suite of Her Majesty and His Royal Highness the Prince.

A Guard of Honour will be drawn up to receive Her Majesty on the site of the intended Building, and the Troops will be formed in Line on the north side of the Stone, to witness the ceremony.

When Her Majesty arrives at the place where the Stone is to be laid, the Commanding Engineer will present to Her Majesty the Plans of the Building to be erected, explaining shortly the intended arrangements.

Her Majesty having signified Her approval of the Plans, will then place in the copper box, prepared for the purpose, the coins, medals, and cross, and the vellum document recording the event. This last will be signed by Her Majesty, His Royal Highness the Prince, and the Secretary of State; and the box being then closed, Her Majesty will place it in the cavity of the stone.

The ceremony of Laying the Stone will then be proceeded with, the Military Bands playing, and at the moment when the Queen strikes the Stone, after having ascertained that it is correctly laid, a signal flag will be hoisted, the Ships in the river will salute, the Troops will present arms, and the Military bands will play "God Save the Queen."

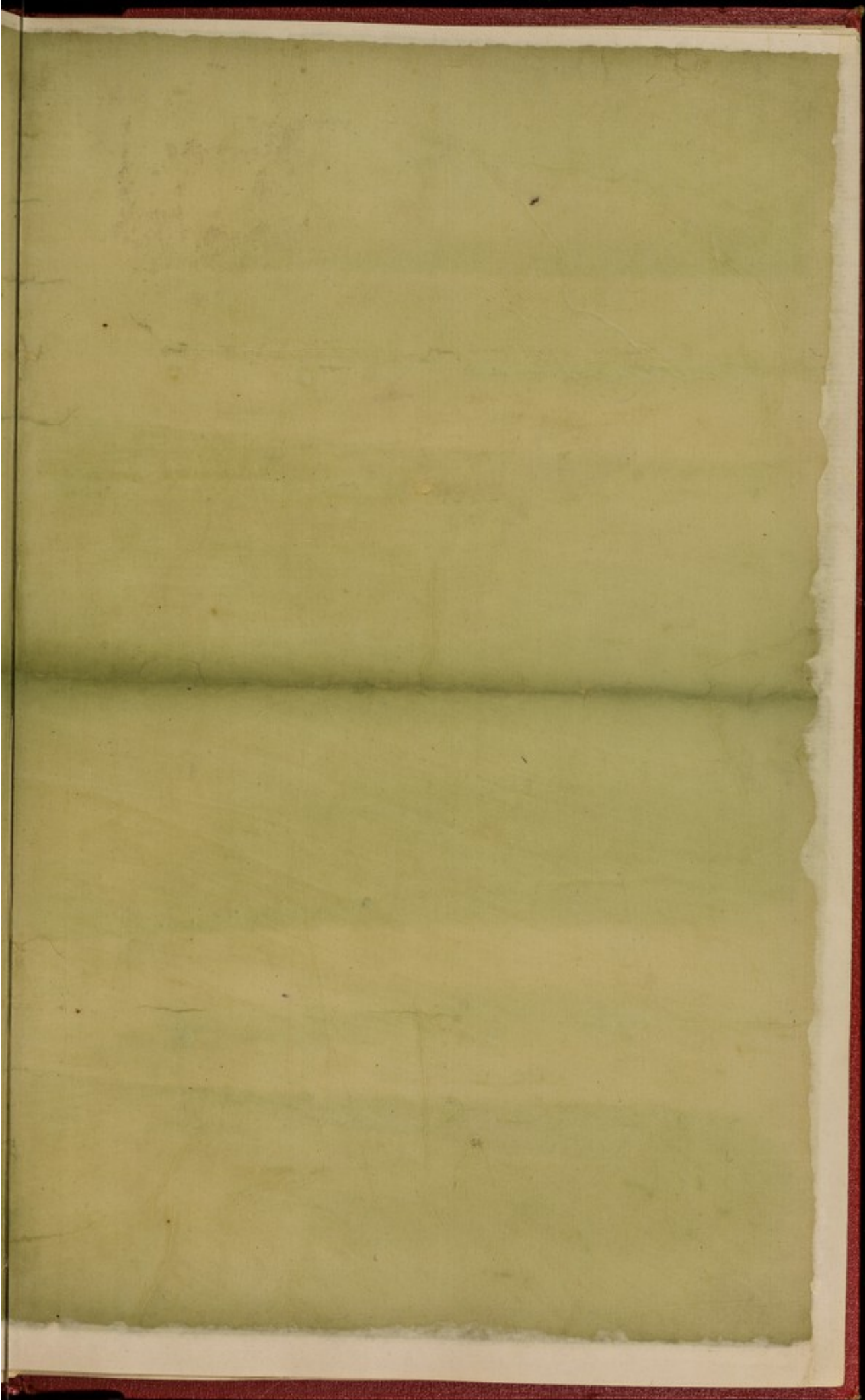
Her Majesty will then direct the Secretary of State to declare that the First Stone of the Military Hospital is laid, and that Her Majesty has been pleased to sanction its being called "The Royal Victoria Hospital."

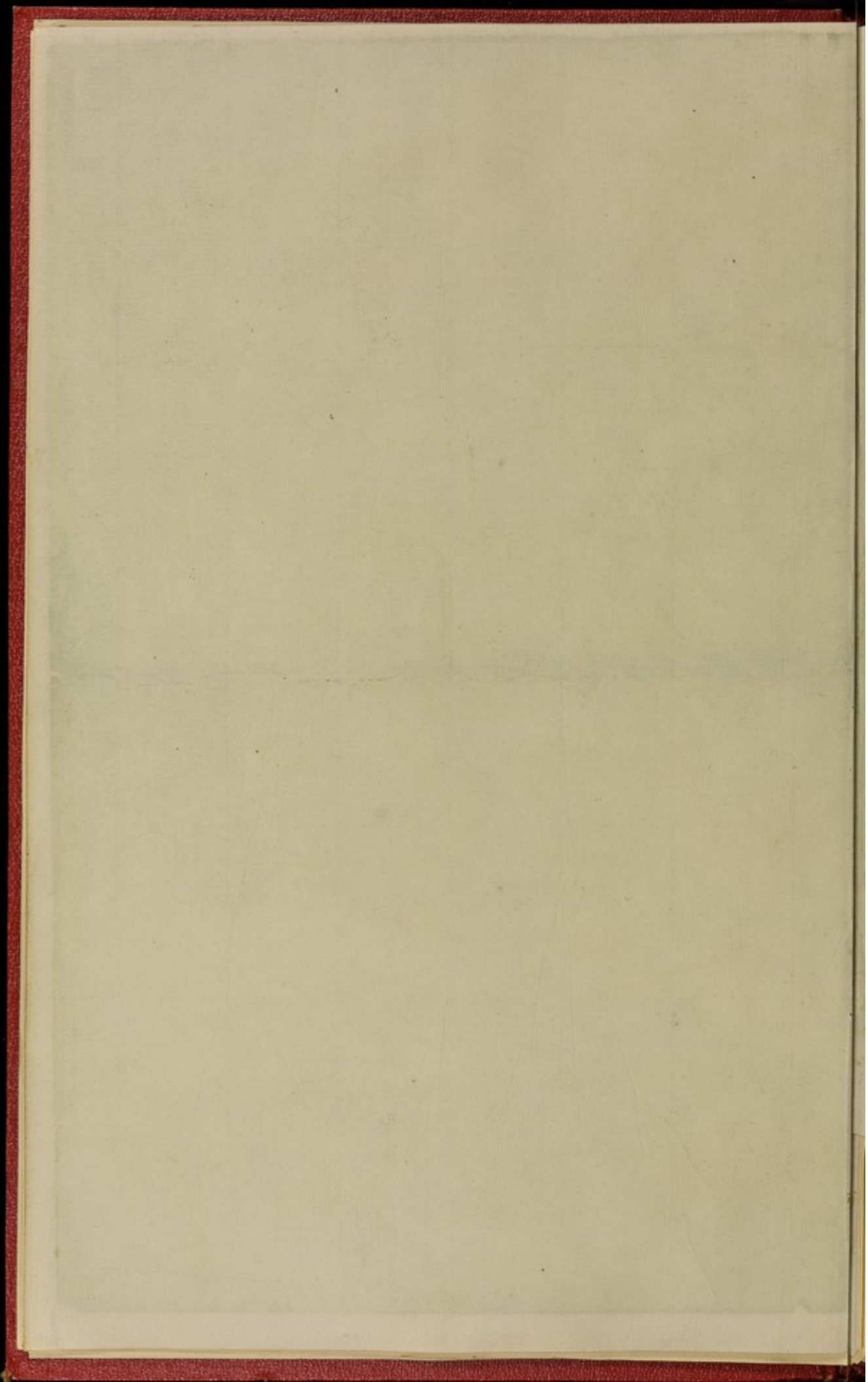
The Bishop of the Diocese will then offer up prayers, and pronounce a blessing, and the Hundredth Psalm will be sung by the Choir.

The Troops will then march past Her Majesty in quick time, and the Queen will return to the Jetty, and re-embark.

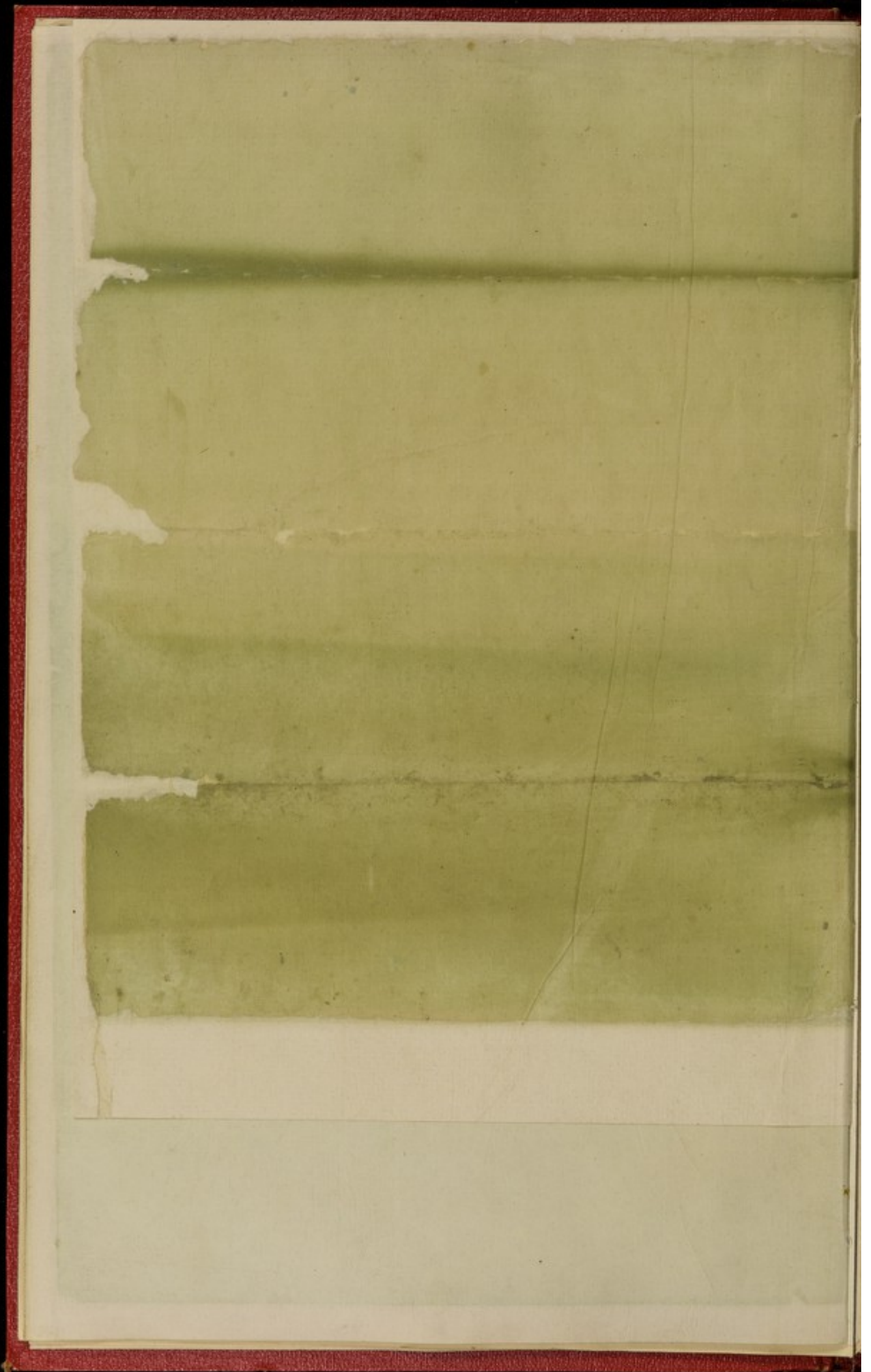
The Ground must be kept quite clear by the Military, and no persons will be allowed to stand near the Royal Party but the Lord Lieutenant of the County, the Secretary of State, the General Commanding the District, the Port Admiral, and the members of the Household in attendance upon Her Majesty.

The Staff of the General and Admiral, and all other authorities not above named, will have places reserved for them, where they will not interrupt the view of the ceremony.





may be anticipated that in many instances officers may come home so disabled from the effects of wounds, or unhealthy climates, that for some time after their return they will require the most careful treatment.



REPORT

TO

THE RIGHT HONOURABLE LORD PANMURE,

PRINCIPAL SECRETARY OF STATE FOR WAR.

MY LORD,

War Department, Pall Mall, May 15, 1856.

IN compliance with the instructions conveyed to us by your Lordship, to the effect that we should inquire and report as to the arrangements which it would be desirable to make for the purpose of providing accommodation of the most approved description for one thousand patients in a new Military Hospital, to be erected near Netley Abbey, on Southampton Water, we have the honour to report to your Lordship that we have made careful inquiry upon that subject among the principal medical authorities both civil and military; and that we have consulted the plans and descriptions of the best hospitals in Holland, which were furnished to us by Lieutenant Elphinstone, of the Royal Engineers, who, by your Lordship's orders, was sent to that country to obtain the requisite information. We have also consulted the plans of some of the best hospitals in France, and one of our Committee, Dr. Mapleton, of the 15th Hussars, has taken special care to make himself acquainted with all the recent improvements that have been adopted in the London hospitals.

The first point which required our consideration was to determine whether it would be more desirable to provide for the 1,000 patients in one or in several buildings; and if the latter, how many separate buildings there should be. There are advantages and disadvantages attending either plan; a single building being the most convenient for the purposes of administration and attendance, while the separate buildings afford the most convenient mode of distributing the patients according to the peculiar characteristics of each disease.

After the most careful consideration, it appears to us that the 1,000 patients would be better provided for in separate buildings, if the number of such buildings be not too great, and there be a ready and convenient means of access from one to another. Looking, then, to the possibility of its being found expedient hereafter to increase the size of this establishment, we recommend that the 1,000 patients be distributed between two buildings, each complete in itself, one of which might be more especially devoted to medical, the other to surgical cases.

We recommend that these separate hospitals should be connected together by a central building, wherein should be provided the rooms required for the first reception and examination of the patients, the accommodation required by the Medical Officers in charge, their Clerks, and their Records, the Store-rooms and Offices of the Central Establishments, of the Apothecary's and Purveyor's Department, and a Board-room and Offices for the meetings of the Chelsea Commissioners. In this central building, also, it appears desirable that accommodation should be provided for a certain number of sick officers, as it may be anticipated that in many instances officers may come home so disabled from the effects of wounds, or unhealthy climates, that for some time after their return they will require the most careful treatment.

Attached, or adjoining to the rooms devoted to the first reception and examination of the sick, should be the principal Bathing-room of the establishment, amply provided with baths of every kind.

It being of great importance to the comfort and well-being both of the patients and of the medical and other attendants that there should exist the most direct covered communication between every part of the whole establishment, we are of opinion that the simplest means of attaining that end, will be to have one great corridor on the ground-floor running from end to end of all the buildings; and we recommend that the central building should project from the corridor towards the water, and that the two hospitals should be placed behind the corridor on the land side.

The next point to which we directed our attention was the number and size of the wards into which the Hospital should be divided. On this point we found that the opinions of the medical authorities were almost unanimous in favour of wards containing a limited number of patients, and, guided in this matter by their opinion, we recommend that the wards should vary in size, so as to accommodate from two to sixteen patients, giving to each patient a cubical space of from 1,300 to 1,800 cubic feet. In these wards, we are of opinion that, in addition to the ordinary means of ventilation afforded by chimneys, doors, and windows, there should be provided ventilating tubes to carry off the heated or vitiated air both from the upper and lower parts of the room, and other tubes to supply fresh air in the centre. We are of opinion that the beds should in no case be placed under the windows, that there should be a space of four feet between the sides of the beds, and that where two rows are placed in one room there should be a space of at least ten feet between them.

The supply of light being a point of great importance to the well-being of the sick, we recommend that the windows should be numerous, that they should be of large size, and that the wards should be so distributed as to profit as much as possible by the genial influence of the sunshine. With a view, however, to moderate any excess of glare, we recommend that corridors corresponding to the great through corridor should run along the front of each of the hospitals on every floor, and that the windows on the other sides should be provided with outside blinds, to shelter them from either sun or rain, or even from cold winds.

Next to the proper distribution and arrangement of the Rooms, it appears to us of importance that every Ward should be fully supplied with all those conveniences and appliances, which are necessary for the careful attendance, the cleanliness, and the comfort of the patients. The inquiries and researches of Dr. Mapleton, in the Civil Hospitals in London, have shown us the great importance which the Medical Profession attach to the proper provision of these conveniences, and it appears to us, that in this new hospital it is most desirable, that every means and appliance should be provided which the experience of Civil Establishments shows to be advantageous.

We recommend, therefore, that attached to every Ward there should be a Nurses' or Orderlies' room, a Water-closet, a Bath and Ablution Room, and a Scullery with sink; and that each of these should be fitted up after the most approved models.

One of the chief points to be considered in planning a large hospital, is the manner in which the food should be prepared and supplied to the Patients. On this point, we recommend that the whole of the cooking, and all other preliminary arrangements, should be conducted in Kitchens and Offices apart from, but close to, and directly communicating with the main buildings; and that all the Patients who are not confined to bed should dine together in large Dining Rooms, constructed over the Kitchen and Offices, and communicating with the general corridor on every floor.

The communication between the kitchens and the dining-rooms, should be made both by staircases and by lifts; and lifts should also be provided for transferring heavy weights from floor to floor; and, with a view to save labour, we recommend that a small steam-engine be erected in connection with the kitchen of each of the Hospitals, and made to work both the lifts which convey the dinners and those which carry up stores. Patients, also, who are too ill to be removed in the ordinary way can in this way be carried up and down with comparative ease to themselves.

Behind each of the Hospitals we recommend that there should be a yard, surrounded by low buildings, which will afford accommodation for Patients afflicted with contagious diseases; as also rooms for the orderlies, storerooms for the men's packs, for dirty clothes, coals, &c.

Here also may be placed the wash-houses, ash-pits, and other conveniences; and two rooms in each yard may be devoted to the purposes of a dead house and post mortem examination room.

We recommend that a path should be carried round the yard, so as to afford covered access to every room.

Having thus briefly stated the general conclusions at which we have arrived, as to the nature of the accommodation to be provided, we have the honour to submit to your Lordship's examination Plans of a Military Hospital designed to carry out the recommendations made in this report, and carefully adapted to the ground which has been selected as the site of the intended building. We have endeavoured to make these Plans as complete and perfect as possible, and we trust that the arrangements we propose may be found worthy of your Lordship's approval. In submitting them, we desire to make known to your Lordship the great assistance we have received during their preparation from the professional skill and the great zeal and assiduity of Mr. Mennie, the Surveyor of the Royal Engineers' Department in Pall Mall.

We have the honour to be,

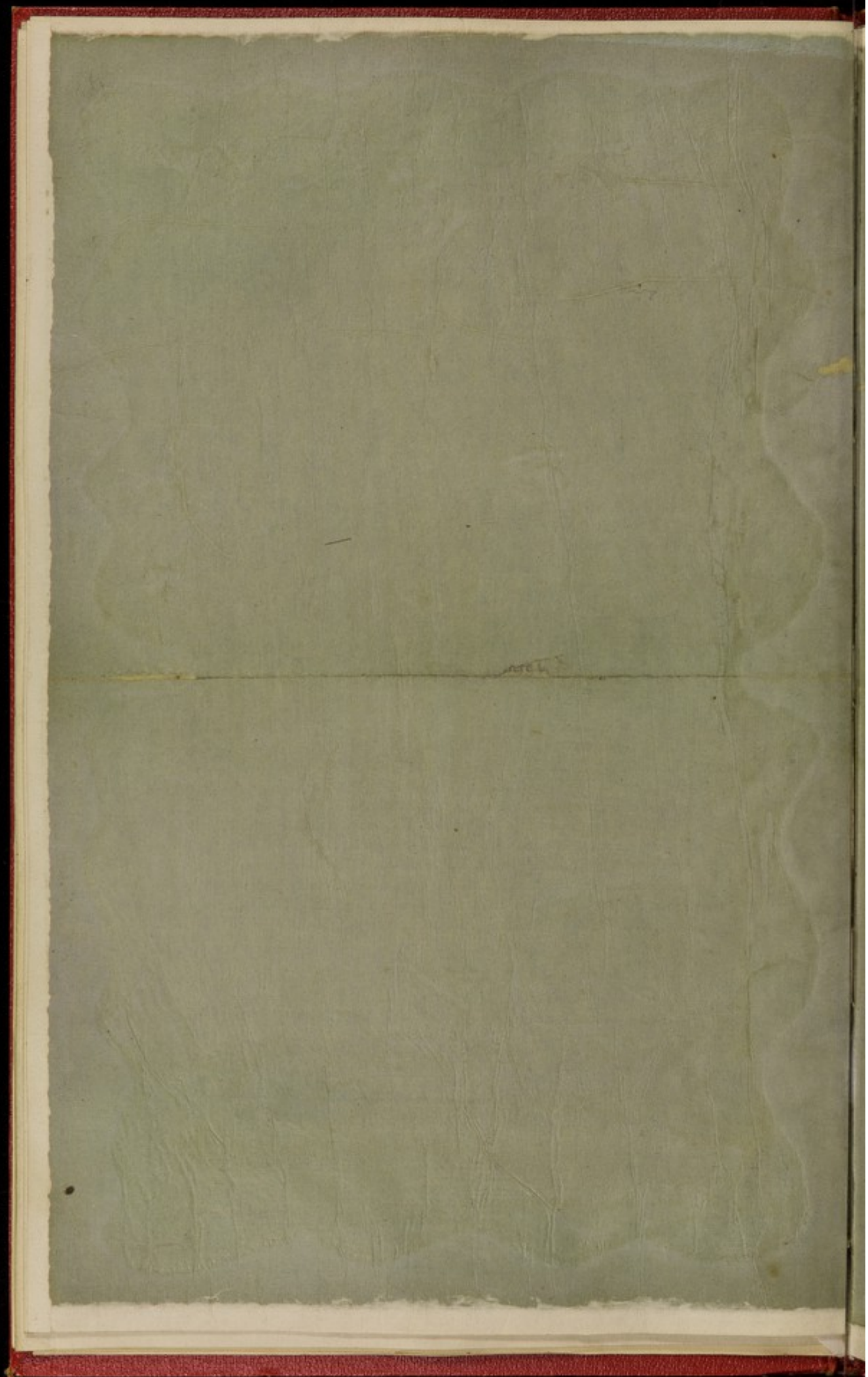
My Lord,

Your Lordship's most obedient Servants,

TERENCE O'BRIEN, *Colonel,*
Assistant Quartermaster-General.

HENRY MAPLETON, *M.D.,*
Surgeon, 15th Hussars.

R. M. LAFFAN,
Deputy Inspector-General of Fortifications.



DETAIL OF THE PLANS
OF THE
VICTORIA MILITARY HOSPITAL,
AT NETLEY, ON THE SOUTHAMPTON WATER.

No. 1 shows General Plan of Ground, the site of the proposed Buildings.

No. 2 „ Ground Plan of One Wing, containing—

1 Ward, to accommodate	16 Patients.
8 Wards	„	9 „ each.
1 do.	„	7 „
4 do.	„	4 „ „
1 do.	„	6 „
5 do.	„	2 „ „

Waiting Room. Wardmaster's and Assistant Wardmaster's Quarters.
Principal Medical Officer's and Clerk's Offices. Medical Officers on
duty. Library and Reading Room. Librarian and Chaplain's
Retiring Room.

Engine Room, Boiler Room and Coal Store. Kitchen, Scullery, Pantry, Buildings in rear.
Larder, Room for arranging Dinners, with Lift to Dining Rooms
above. Steward's Quarters. Bedding and Provision Stores. Medical
Officers' Room. Medical Registry and Appliances Room. Dispensary,
Drug Room, and Surgery Man's Room. Cellars in the Basement for
Steward's Stores.

Orderlies' Rooms, Itch Wards, Contagion Wards, Pack Stores, Cook's Out-buildings.
and Engine Man's Quarters; Coal Stores and Store Rooms; Post
Mortem Room and Dead House; Wash House and Ablution Rooms;
Sluice Privies and Urinals, and Ash Pits.

No. 3. First Floor Plan of Wing, containing—

2	Wards, to accommodate	16 Patients each.
10	do.	9 ..
2	do.	8 ..
2	do.	7 ..
2	do.	6 ..
6	do.	2 ..

Medical Registry and Assistant Ward-master's Rooms, Dining Room, Cook's Room, and Scullery.

No. 4. Second Floor Plan of Wing, containing—

1	Ward, to accommodate	16 Patients.
10	do.	9 .. each.
2	do.	8 ..
2	do.	7 ..
2	do.	6 ..
2	do.	3 ..
6	do.	2 ..

Operating Theatre, Medical Registry, and Assistant Ward-master's Room.

No. 5. Ground Plan of Centre Block, containing—

Wardmaster's Quarters; Waiting Room for 200 Men; Orderly and Medical Officer's Room, Offices for Principal Medical Officer and Clerks; Apothecary's Office; Purveyor's Office and Purveyor's Clerks'; Chelsea Board Room and Ante-room; Baths of every description; Bath Man's Room; Fatigue Man's Room; Chapel, to accommodate 800, with Vestry and Book Rooms.

No. 6. First Floor Plan, containing—

Six Rooms, each to accommodate one Sick Officer; one Day Room for Officers; Mess Kitchen, Servants' Rooms, &c.; Three Rooms, each to accommodate two Sick Officers' Servants; Surgeon's and Assistant Surgeon's Quarters; Kitchens, Servants' Rooms, Larders, &c., attached; Large Store Rooms for Apothecary or Purveyor's Stores; Bath Room for Officers.

No. 7. Second Floor Plan, containing—

Rooms with the same arrangements as on the First Floor, and can be made available for more Sick Officers or Stores, as may be required.
Water-closets on each floor.

No. 8. Front Elevation of Wing of Hospital.

No. 9. Sections of ditto.

No. 10. Front Elevation of Centre Block.

No. 11. Side Elevation and Section of ditto, and Elevation and Section of Chapel.

No. 12. General Plan, showing the Detailed Arrangements of the Hospital.

N.B.—The Right Wing is precisely similar in arrangement to that shown in Drawings Nos. 2, 3, 4, 8, and 9, as will be seen in the General Plan, No. 12.

The following is the Detail of each of the Offices in the Centre Block:—

- Entrance. A Grand Portico Entrance into a Corridor 10 feet wide.
- On the left of this is—
1. A Bath Man's Room, 22 feet by 17, with Boilers, Press for Towels, &c.
 2. An Apothecary's Office, 22 feet by 13, fitted up as such with desks, shelves, cupboards, pigeon-holes, &c., for himself and Clerk.
 3. A Principal Medical Officer's Office, 22 feet by 17 feet 9 inches, to be fitted up as such, with a Closet attached for hanging up coats, &c., fitted with Pegs.
 4. Principal Medical Officer's Clerk's Office (with Closet attached), 41 feet by 22. To be fitted as an Office. In one corner to be the Desk raised for the Senior Clerk. This room opening into the Principal Medical Officer's Office, and to have a post-office window opening into the Corridor.
 5. A Principal Medical Officer's Private Room, 23 feet by 13, fitted up as such—carpet, table, portable wash-stand, &c.—and off it a Water-closet.
 6. An Orderly Medical Officer's Room, 22 feet by 14, fitted up with Bed, &c.—washstand, foot-tub, carpet, chairs, and table—opening into a—
 7. Waiting Room for 200 Men, 55 feet by 22; fitted with Benches, &c.
 8. At one end of this a Closet 17 feet by 8 feet, for the Wardmaster to enter names of the Sick, &c. This to be fitted up with shelves, desks, pigeon-holes, with a door-lock and key, side-lights, &c.
 9. Five Water-closets in a buttress of the Corridor.
 10. An opening leading to the next Block, and to the Chapel in the rear, and Bath Rooms, all under cover.
 11. Two Lifts, for the Apothecary and Purveyor's Stores to be sent up to the upper stories; and for taking up to his Quarters a Sick Officer, if necessary.
- Principal Medical Officer's Private Room.
- Orderly Medical Officer's Room.
- Waiting Room.
- Wardmaster's Office.
- Water-closets.
- Lifts.

On the Right Hand of the Entrance.

1. A Porter's Room, 17 feet by 10, with Bed, &c. Porter's Room.
2. A Wardmaster's Room, 22 feet by 13. Wardmaster's
Rooms.
Ditto Bedroom, 22 ,, 13.
A Water Closet off it.
A Kitchen 17 ,, 10.
3. A Room, 22 feet by 17, for a Board Room for Medical Officers.
4. A Room *fitted up* for any *State Visit*, and for the Meeting of the Chelsea Commissioners, 41 feet 3 inches by 22 feet. Chelsea Board
Room, &c.
5. An Anteroom off it for the Invalids to wait until examined; fitted up with Benches. Anteroom.
6. A Room, 22 feet by 11, for a Fatigue Man in Charge of the Building, to keep his cleaning utensils in, &c. Fatigue Man's
Room.
7. Two Rooms (with Closet) for the Purveyor and his Clerks, fitted up as Offices, opening into one another; one room, 23 feet by 14, another 23 feet by 18. Purveyor's Room
and Offices.
8. Off the Corridor four Water-closets for the Officers. Water-closets.
9. The above Rooms and Offices are contained in the Central Block, which projects in front of the Main Corridor 114 feet. Front Projection

The First and Second Floors have the same architectural arrangements as the Ground Floor. In the former are arranged Quarters for the two Resident Medical and six Sick Officers; giving to each a room, with a dining or day-room, kitchen, &c., in common; rooms for servants, bath-room, &c.

The Second Floor has the same space unappropriated at present.

10. In the Rear Centre of the Central Block are situated the following Baths:—

- A Swimming one, 57 feet long, 34 feet wide, 4 feet or more deep.
- Six Hot Baths of the usual size, with Shower Baths fitted over them.
- One Sulphur Bath, Stove, &c.
- One Mineral Acid Bath, as at the Rotterdam Hospital.

(SURGICAL) BLOCK FOR 500 PATIENTS.

Portico. 11. A Grand Portico Entrance, 40 feet by 20; 6 steps leading to the Grand Corridor.

Corridor. 12. The Corridor to be 12 feet wide, with windows to open as low down as possible, so as to allow a complete circulation of air when necessary.

13. Eight Anglo-American Stoves to be placed at proper intervals in each floor of the Corridor, and at either end a Buttress, projecting 24 feet in front, and in which can be accommodated Patients in Small Wards, with more light and ventilation than in the ordinary ones; and a small space partitioned off for the portable bath of the floor, cleaning utensils, and coals for the Stoves.

Wards. 14. All Wards throughout the building have attached to them Water-closets, Bath, and Scullery, and also an ablution space, differing in size according to the number of Patients in the Wards, which vary from 2, the smallest, to 16, the largest. There are Wards for 2, 4, 6, 7, 8, 9, and 16 Patients. The fittings should be of the same class in each.

Orderly's or Nurse's Room. 15. A Nurse's or Orderly's Room to open off each Ward, with a doorway only leading into them;—no door, because, if capable of being closed, irregularities are more likely to take place; and as there is no fire-place, the Orderly will be interested in looking to the fire and comfort of the Ward for himself, as well as for the Patients.

16. Adjoining these 9-Patient Wards are small ones for 2 Patients; the one Orderly looking after both.

17. In the Orderly's Room are to be provided shelves, and drawers or lockers, for putting away a few extra pillows, cushions for chairs, curtains for, say two beds, &c. It will have borrowed light from either side; ventilation in all the rooms of the building to be carried on, in addition to open fire-places, doors, and windows, by apertures in the ceilings, connected with an heated air-shaft, and the cold air admitted below.

18. The drawers or lockers should be sufficiently large for, say two dozen shirts, socks, handkerchiefs, and neckerchiefs, in the event of the Government supplying these articles for the sick; also for waste paper for the water-closets.

Say Dwarf Cupboard, 3 feet long, 3 feet high, and 14 inches deep. Above this 2 Shelves placed.

4 Peg Rails in each.

These rooms are 10 feet by 7 feet 6 inches.

19. The Water-closets to have 2 seats, partitioned off from one another, to be seat self-acting, as this plan is the most approved of. *Water-closets.* One of them to be fitted with a cock for cold water, in such a manner as to allow the seat to be lifted, bed pans emptied, and washed out, as at Middlesex Hospital.

20. There should be a ledge in each for a chamber-pot, and a little box for waste paper.

21. The Scullery should have a sink, with hot and cold water laid on, to clean the plates, cups, &c., of the Ward. *Scullery.*

22. A plate-rack or dresser to place the plates, &c. on; brass pegs on the edge of the shelves to hang cups on; and a drawer for knives, forks, and spoons.

23. Under the Sink may be a trough to keep the cleaning utensils, mops, &c., of the Ward.

24. In one corner a place for the portable night-stool, and over this a shelf for the bed-pan, urinal, spitting-cups, &c.

25. A roller for towels in a convenient spot.

26. The Bath should be a fixture, 6 feet 6 inches by 2 feet 6 inches, with hot and cold water laid on, partitioned off for privacy; and on the partition 6 or 8 *Bath Room.* (wooden) pegs to hang the Patient's clothes on when in the Bath. A towel-roller on one side, and a ledge for soap, brushes, &c. on the other.

27. A flexible tube will be requisite to fill the Portable Bath when required.

28. In each Corridor should be kept one Portable Bath, with indiarubber round its wheels, about 6 feet by 2 feet 6 inches; so that if it is thought better *Portable Bath.* for any man to have his bath at the bedside it can be given him. Also a Hip Bath. *Hip Bath.*

29. In each Ward should be one Folding Screen, so that a Patient who requires the Clergyman, or who is dying, may be shut off from his comrades. *Screen.*

30. Off each Ward is an Ablution Room, with basins fitted with plug and washer; hot and cold water; pegs for towels to hang on. *Ablution Room.*

31. A place under the basins for 2 Foot Tins, and 4 Metal Basins. *Foot Tins. Metal Basins.*

32. A small box or ledge for soap, and looking-glass, in a proper situation.

Wards.

33. The Wards throughout the whole building are in size and description as follows:—

GROUND FLOOR.

No. of Men in each.	Size.		Number of Wards.	Cubical feet to each Patient.
	Ft.	Ft. in.		
For 2	15 by	12 6	5	1406
4	23 ..	15 3	4	1315
6	35 ..	15 0	1	1312
7	35 ..	24 0	1	1800
9	35 ..	24 0	8	1400
16	54 ..	32 0	1	1620

FIRST FLOOR.

2	15 by	12 6	6	1406
6	35 ..	15 0	2	1312
7	35 ..	24 0	2	1800
8	32 ..	23 0	2	1405
9	35 ..	24 0	10	1400
16	54 ..	32 0	2	1620

SECOND FLOOR.

2	15 by	12 6	6	1406
3	16 ..	21 0	2	1682
6	(off Operating Theatre) 35 ..	15 0	2	1312
7	35 ..	24 0	2	1800
8	32 ..	23 5	2	1405
9	35 ..	24 0	10	1400
16	54 ..	32 0	1	1620

YARD.

Itch Ward ..	6	32 by	24 9	2	1980
Contagion Ward ..	8	35 ..	24 0	2	1622

34. The Beds are arranged between the windows as much as possible ; 4 feet between them laterally, and between the ends, in the small wards, 10 feet, in the larger, 18 ; allowing each Bed 7 feet length. Over the Bed in the wall to be the number ; also a small ledge, 1 foot long, 7 inches deep, with a fillet, for depositing medicines, &c. Beds.
35. A Pulley to each Bed, and two sets of light green curtains to each Ward, for the convenience of Patients requiring protection from light or draughts of air (as at Guy's Hospital), made to shift on and off the head of the Bedstead. Pulley. Curtains.
36. A Bed-side Table, with two shelves in it, for each person. Bed-side Table.
37. A small deal Board, 2 feet 4 inches by 18 inches deep, with an inch and half ledge at the top, and 6-inch standards below, to rest on the bed, for men who are unable to move off their backs to write upon or eat off ; two to each Ward. Dinner Board.
38. The utensils, such as plates, drinking-cups, chamber-pots, &c., to be of white earthenware, and not *metal*. The Naval Hospital at Chatham, and all Civil Establishments, have earthenware. Each Patient to have a knife, fork, and spoon ; a drinking-cup, soup-basin, and plate ; a teaspoon, and a pint cup for tea ; and the tea sent up to the Ward in a metal pot, with spout and cover. Utensils.
39. It is recommended that the Patients be provided with shirts, socks, neck and pocket handkerchiefs, and towels, whilst in the Hospital, and their own placed in Store. Shirts, &c.
40. Each Ward to have a hot-water (small) boiler for fomentation, &c. Small Boiler.
41. Each Ward to be supplied with two arm chairs with moveable cushions. Arm Chairs.
42. A Table to be placed in front of the fire ; with benches having moveable backs, and stuffed and covered with polished seal skin. Stuffed Benches.

OFFICES IN A BLOCK FOR 500.

- The Operating Theatre. 43. To be on the 2nd Floor, for the convenience of a skylight. The Lift from the Waiting Room will bring to this floor any man unable to walk up.
- Lift. 44. The Lift to be 7 feet square, and fitted with a bed on india-rubber wheels, and a head to push it along to the Ward.
- Theatre. 45. In the Theatre, to be raised benches for 100 spectators. The fittings to be as near as possible as at St. George's and King's College Hospitals, with sinks, hot and cold water, wash basins, a sticking plaister warmer, surgical appliance cupboards, and an Anglo-American open stove. Two rooms off this, each 22 feet by 16, for Patients after an operation. A Water-closet, Scullery, Bath, and Orderly Room attached, which communicates with a 12-Men's Ward for the surgical cases likely to require operations.
- Rooms off it.
- The Operating Table. 46. To be of the most approved pattern.

OFFICES ON THE GROUND FLOOR.

Left of Entrance

- Principal Medical Officer. 47. One Room for the Principal Medical Officer of the Block, 24 feet by 18 feet 6 inches; with a partition, and desk, and a few shelves for books: behind the partition a Clerk's Desk, and a post-office window opening into the passage.
- Wardmaster. 48. Two Rooms for Wardmaster, with a Kitchen and Water Closet attached.
- The Sitting-room, 24 feet by 17 feet 3 inches.
The Bed-room, 15 " 12 feet 6 inches.
The Kitchen to have a sink, with hot and cold water.
All to have requisite furniture.
- Assistant Wardmaster. 49. One Room for an Assistant Wardmaster, 24 feet by 17; a Kitchen, 17 feet 3 inches by 8 feet 9 inches, with sink, hot and cold water, &c., and a water-closet to himself.
- Medical Officer on duty. 50. One Room on the left, 18 feet 6 inches by 15, for the Medical Officer Duty. To be fitted with a bedstead, bedding, portable wash-stand, foot-tin, carpet, &c. (Meals to be brought from the Mess).

51. On the extreme Left of the Corridor is a room, 54 feet by 32, for a Library, Library, or for Divine Service, &c., to be fitted with the necessary shelves for books, tables, polished seal-skin covered seats, &c.

52. The Clergyman to have a small private room off it, 12 feet 6 inches by 9 feet 3 inches, with a closet for his surplice, and a portable washstand, towel-roller, &c. Clergyman.

53. Two Rooms, for the Librarian, and a passage to the Verandah which goes all round the Offices in the Hospital Yard. Librarian.

54. In the Left Wing are Water-closets for the Officers. Water-closets.

On the Right of the Entrance.

55. A Waiting-Room for Patients, 36 feet 6 inches by 24; at one end a counter and desk, to be fitted up for the Wardmaster to enter names on admission and discharge, &c.; and behind it, to be fitted to the wall, shelves for books, pigeon-holes for War Office forms, bedhead tickets, &c., and a few drawers. Waiting Room.

56. At the end, a 7-foot square Lift, for bedridden Patients to be sent up to their respective Wards. Lift.

57. The Room to have the necessary number of benches, tables, &c.

On the First Floor.

58. One Room is for the Assistant Wardmaster, or person in charge of the Floor; another Room for the Surgical appliances, with shelves and drawers; and also where the Registers of the Floor are kept, when the Medical Officers are not using them. Assistant Wardmaster.

59. In one part of the Wing, at either end of the Corridor, is a partition for a Portable Bath, coals for the Stoves of the Corridor, &c. At another, a set of water-closets, common to the Corridor, Wardmaster, &c. Portable Bath, &c.

60. The same arrangement is made on the 2nd Floor.

61. The five End Wards on the 2nd Floor (right) are to be fitted with moveable shutters and green blinds, for ophthalmic cases, as at the Charing Cross Eye Infirmary. Ophthalmic Wards.

62. And in the other Block, two Rooms in the Wing on the Ground Floor is recommended to have bars to the windows, &c., for temporary Lunatics. Lunatic Wards.

- Kitchens. 63. The Kitchen and Offices, Dispensary and Offices, &c., are in a detached building, but communicating with the block by means of an 8-feet wide and 66-feet long Corridor, in the centre of which is a grand main staircase.
- Kitchen. 64. The Kitchen is to be fitted after *the most* approved plan, with all the new arrangements for cooking, 32 feet square.
- Scullery. 65. Off it, a Scullery, 23 feet by 13; also a Larder and Pantry, each 12 feet square.
- Arranging Room. 66. A room, 26 feet by 14, attached for arranging dinners; and in one corner, a 5-feet Lift, to send the dinners, &c., to the Dining Rooms above.
67. All these Offices to have the necessary fittings.
- Dispensary. 68. On the right of the Kitchen is the Dispensary, but not communicating with it, 24 feet by 23; to be fitted as near as possible to the one at Guy's Hospital, with sinks, funnel-taps, &c.
- Drug Room. 69. A Drug Room attached, 23 feet by 14; as well as a Surgical Appliance Room, 21 feet by 6, and room for Dispensary Man in charge, 21 feet by 15.
- Medical Register 70. Next to this, a room for the Medical and other Registers, &c., 23 feet by 10; fitted partly as an Office.
- Medical Officers. 71. A room for the Medical Officers to meet, 23 feet by 18; fitted with basins, hot and cold water, towels, rollers, &c., another room, 23 feet by 13 feet, unappropriated.
- Steward's Room. 72. On the left of the Kitchen,—
- | | |
|------------------------------|-------------|
| 1 Steward's Day room | 23ft. by 18 |
| 1 „ Bedroom | 23ft. by 13 |
- Water closet to himself near the Wardmaster's.
- Provision and Wine Store. 73. Two rooms for Provision and clean Utensil Store :—
- | | |
|------------|----------------|
| 1. | 23 feet by 21. |
| 2. | 23 „ 13. |
- Wine and Beer Cellar. 74. This communicating with a Beer and Wine Cellar underneath, by means of a staircase.

75. On the extreme left, a large room, 40 feet by 23, for clean bedding of all kinds, say for 100 sets. Racks and shelves to place them on, as well as drawers for shirts, socks, drawers, flannels, handkerchiefs, and neckerchiefs. Bedding and Utensil Store.

76. Over the Kitchen, on 1st and 2nd Floors, are the Dining Rooms. Patients of the Ground and 1st Floor to dine in the 1st Floor Dining Room, and those on the 2nd, in that of the 2nd. The Dining Rooms.

77. A Scullery, 23 feet by 13, off one end, and a room for the Cooks off the other.

78. A Staircase (as well as a Lift) communicating with each.

79. The Dining Room to be large enough to dine 200 Patients in comfort, 60 feet 8 inches by 30 feet 9 inches; and to be fitted with tables, sealskin polished stuffed benches, open fire-places, dressers, shelves, &c. Dining Rooms.

80. The Dining Rooms communicate with the main building by a Corridor, 8 feet wide and 60 feet long (including the staircase). Corridor.

IN THE HOSPITAL YARD.

81. An Entrance Gate, 5 feet wide. Left of Entrance

82. An Orderlies' Room, 33 feet 3 inches by 24 feet 9 inches, for 12 men. Orderlies' Room.

83. Two Itch Wards, 32 feet by 24 each, for 6 men in each; with water-closets, ablution room, and baths attached. Itch Ward.

84. Sluice Privies and Urinals. Privies, &c.

85. A Dusthole, 30 feet by 12. Dusthole.

86. A Shed for Carts, &c. Shed.

87. Two Contagion Wards, with eight men's space in each, 35 feet by 24 feet 9 inches each; has water-closets, bath, and ablution room attached. Contagion Wards.

88. A Pack Store, 44 feet 9 inches by 21 feet 9 inches, fitted with racks, shelves, &c. for packs, shakos, valises. Pack Store.

- Engine Men's Quarters. 89. Four Quarters, each 17 feet by 12, for the Persons in charge of Engine House, &c.
- Coal Store. 90. A Coal Store, 35 feet 9 inches by 24 feet 9 inches.
- Store Room. 91. An unappropriated Store Room, 45 feet by 21 feet 9 inches
- Dirty Clothes Store. 92. One dirty Clothes' Store, in 3 divisions—
- | | | | ft. ins. | ft. ins. |
|----|----|----|----------|----------|
| 1. | .. | .. | 36 0 | by 24 9 |
| 2. | .. | .. | 10 0 | by 24 9 |
| 3. | .. | .. | 19 3 | by 24 9 |
- Desiccating Room. 93. A Desiccating Room attached, 18 feet by 16 feet 9 inches.
- Post Mortem. 94. A Post Mortem Room (with skylight), 31 feet by 18.
95. Table of slate or marble, as in the sketch of Rotterdam Hospital.
96. Sink, hot and cold water laid on, with basins and trough, as at the St. Mark's Hospital, City Road.
- A cupboard and shelves.
- An open fireplace.
- Towel, roller, &c.
- Dead House. 97. An opening into the Dead House (20 feet by 18), which has a doorway into the Hospital Yard, as well as external to it for the Funeral Parties' convenience.
98. A Dusthole, 30 feet by 12.
99. Sluice Privies, &c.
100. Washhouse, 30 feet by 24 feet 9 inches, fitted as such.
101. An Ablution Room, 22 feet 9 inches by 20 feet, fitted as such.
102. A Room for twelve Orderlies, 53 feet 3 inches by 24 feet 9 inches. Into the Yard is a 5-foot entrance on the right side; and a 12-foot centre one in the rear.
103. An engine and boilers to be in each Block; it is thought desirable to work the Lifts, supplying hot water, &c. The whistle calls the servants, &c.
104. Water is supposed to be abundantly laid on, both hot and cold, in all the floors and offices of the Establishment.

105. The water-closets to be supplied with both hot and cold, to prevent the inconvenience occasioned by frost in winter, when cold only is used.

106. The grounds to be laid out for exercise, &c., and some mushroom-shaped sheds, with seats around the centre, as in some of the London squares, for protection in showery weather. A ball and skittle alley is thought desirable.

107.
Draughts and

108. Benches and seats to be distributed around the Corridors and grounds.

109. A Shed in rear of the Dead Houses, for protection of the Funeral Party in bad weather.

110. The whole of the Offices in the Yard are approachable from the Hospital under cover by means of an 8-foot verandah

Report on and Detail of the Plans of
the Victoria Military Hospital, at
Netley, near Southampton Water.

