

Plans of British army hospitals for the Boer War

Publication/Creation

1900-1902

Persistent URL

<https://wellcomecollection.org/works/wug6fx6t>

License and attribution

You have permission to make copies of this work under a Creative Commons, Attribution, Non-commercial license.

Non-commercial use includes private study, academic research, teaching, and other activities that are not primarily intended for, or directed towards, commercial advantage or private monetary compensation. See the Legal Code for further information.

Image source should be attributed as specified in the full catalogue record. If no source is given the image should be attributed to Wellcome Collection.



Wellcome Collection
183 Euston Road
London NW1 2BE UK
T +44 (0)20 7611 8722
E library@wellcomecollection.org
<https://wellcomecollection.org>

RAMC 634

Plans of Hospital
Arrangements in the
S. African War.

Presented by Col. R. S. Simpson.
- only.

— PLAN No 1 —

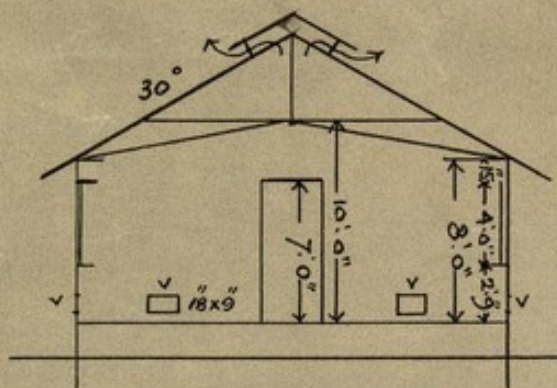
Men's Ward Hut

(Permanent or Portable)

(20 Beds)

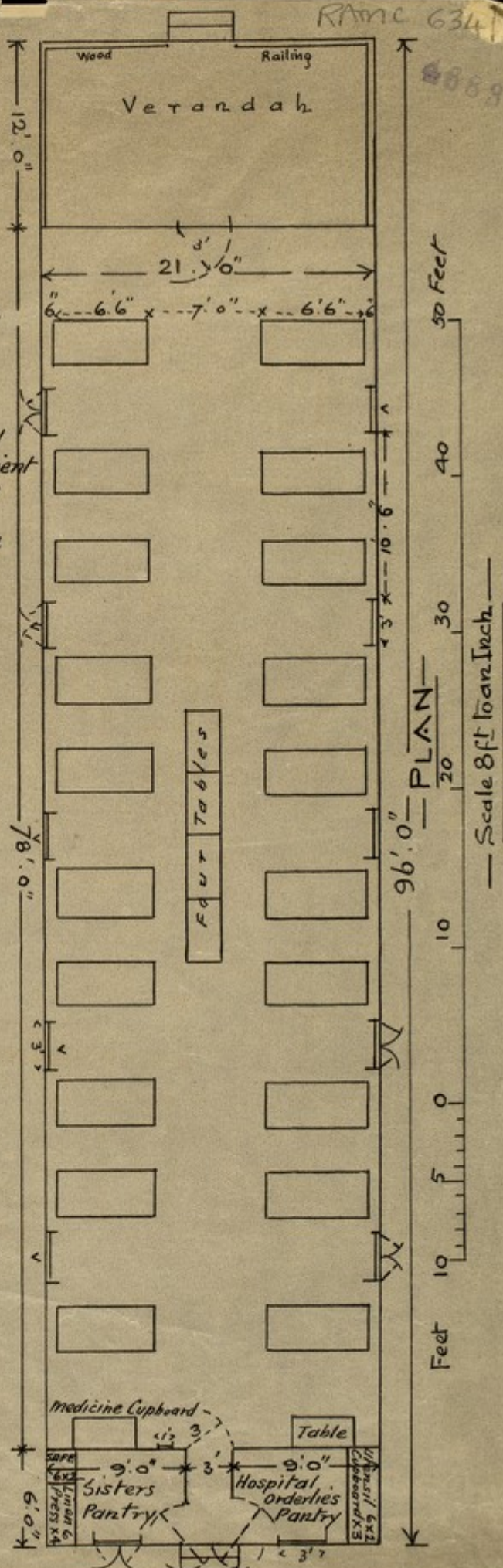
NOTES

1. Ventilator in roof for huts in temperate climates are required, for those abroad foul air outlets 18"x9" above each window instead of Ventilator in Roof.
2. In tropical climates the whole hut to be raised 3'0" above natural ground line. In temperate climates sufficient ventilation must be provided under floors about 1 foot space.
3. At home & abroad the site must be covered with concrete.



— CROSS SECTION —

4. v. v. v. denotes positions of Fresh Air Inlets 18"x9" perforated zinc with sliding shutter to regulate them.
5. All windows to open outwards & fastened on sill with bar fastener.
6. Concrete Floors to Pantry &c.



— PLAN N^o2 —

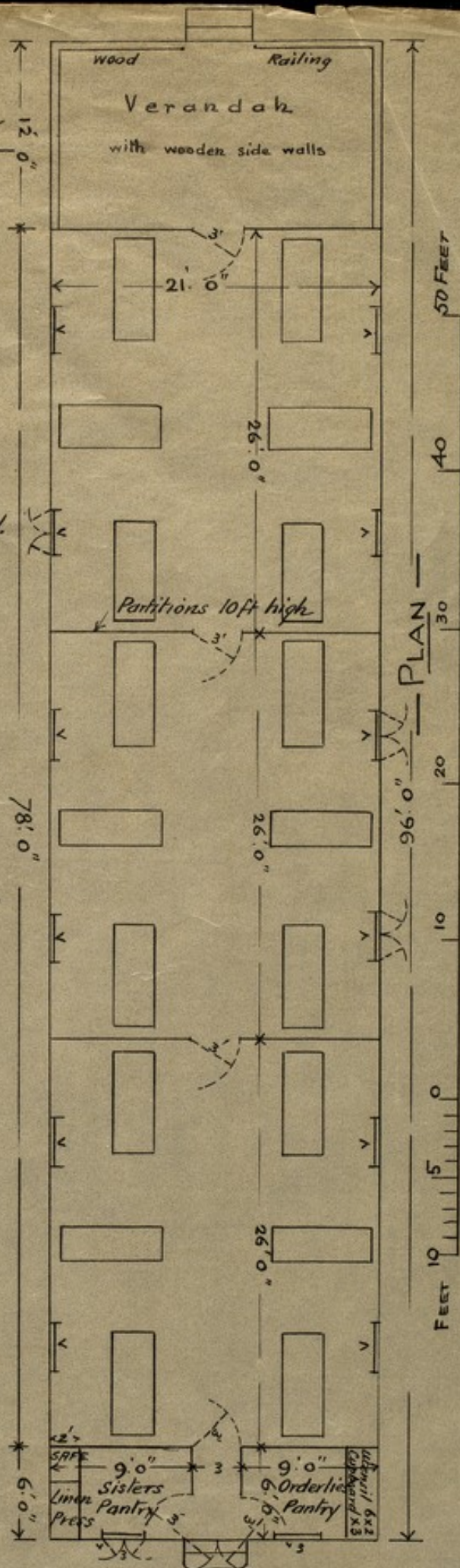
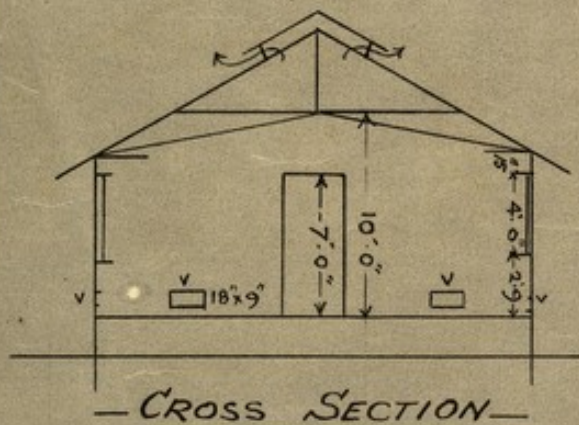
— Officers Hospital Ward Hut —

(Permanent or Portable)

18 Beds (6 to each ward)

Notes on plan N^o1 are
applicable to this hut.

These Wards can be divided
by moveable partitions if necessary.



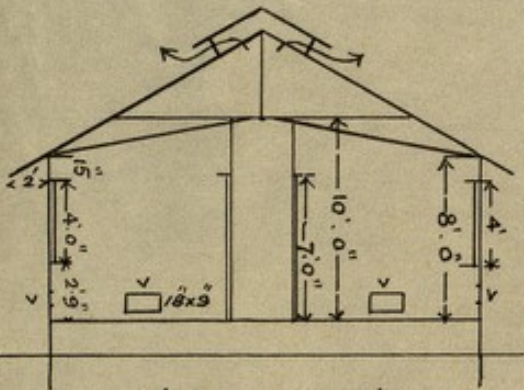
—PLAN N°3—

Officers Hut with separate

—Cubicles—

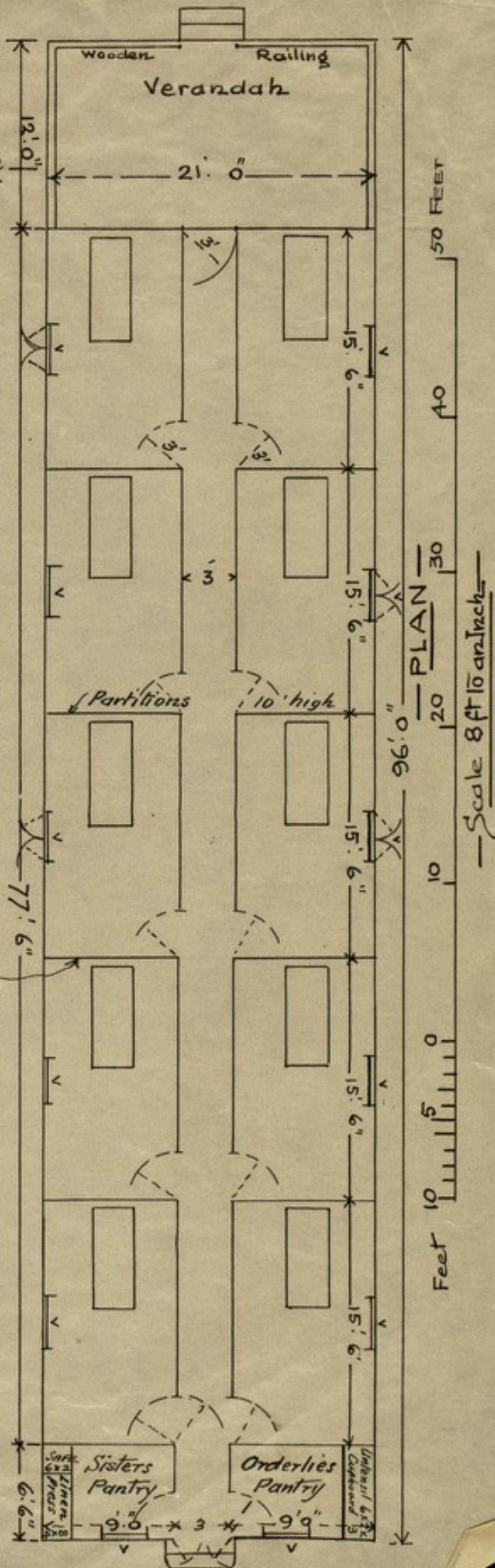
(Permanent or Portable)

The notes on plan N^o1 are applicable to this hut.



— Cross Section —

Any of these partitions can be removed if required to enlarge a room.

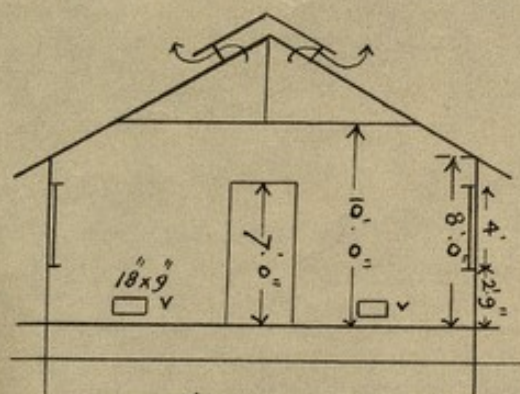


PLAN N° 4

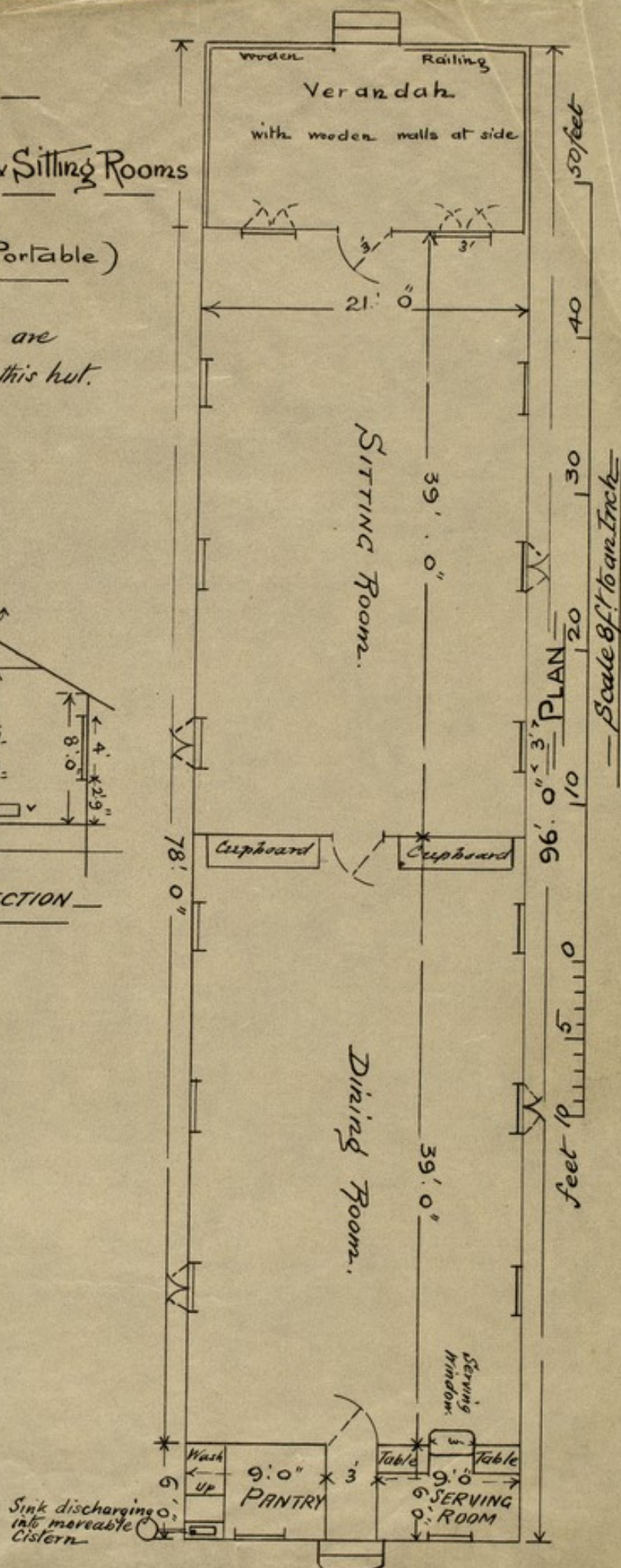
Officers' Dining & Sitting Rooms

(Permanent or Portable)

Notes on plan N°1 are applicable to this hut.



CROSS SECTION

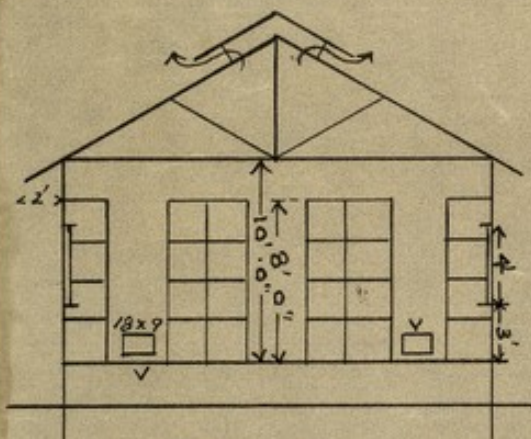


PLAN N^o 5

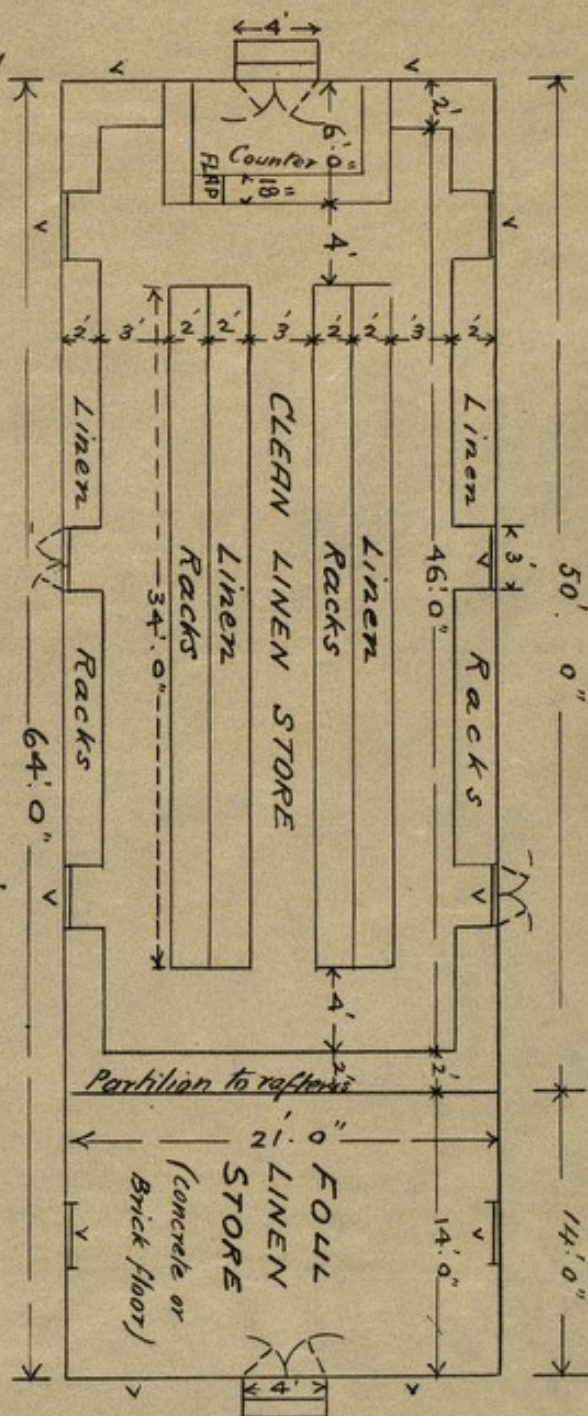
4883

CLEAN & FOUL LINEN
STORES
(Permanent or Portable)

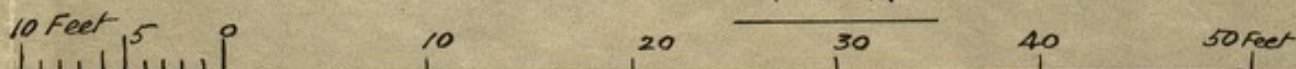
Notes on plan N^o 1
are applicable to
this hut.



CROSS SECTION



PLAN



Scale 8 ft to an Inch.

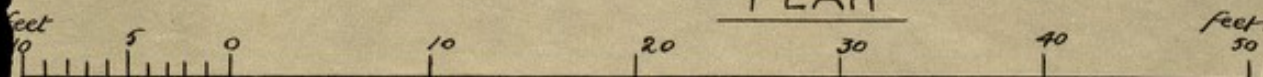
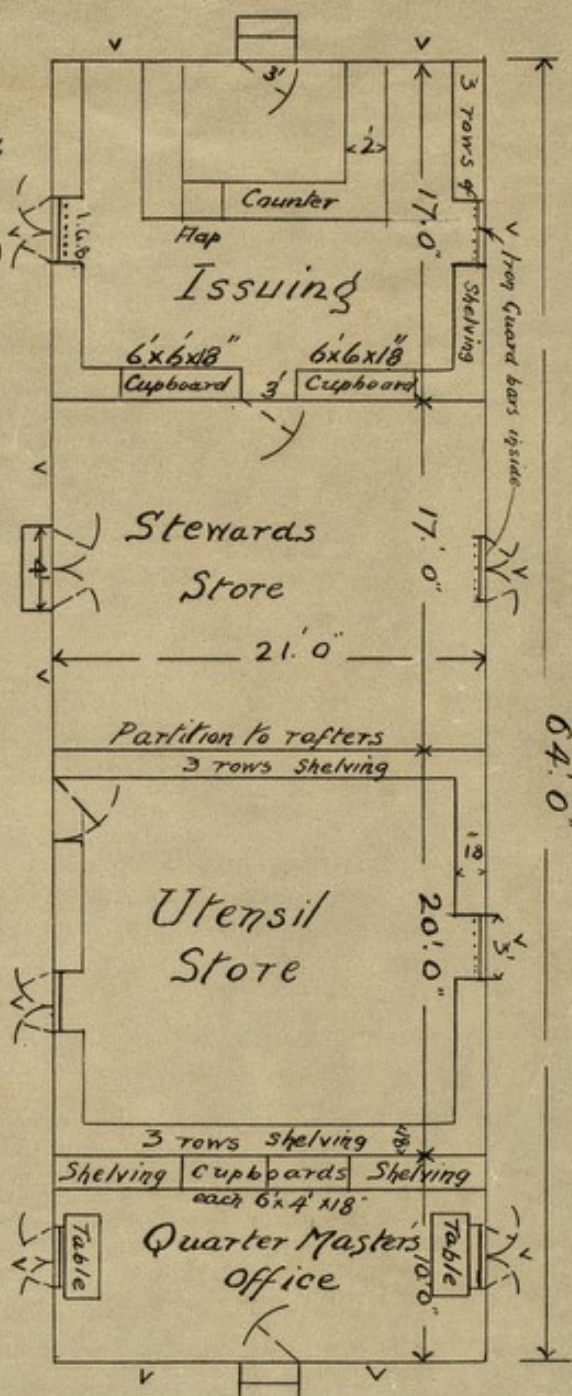
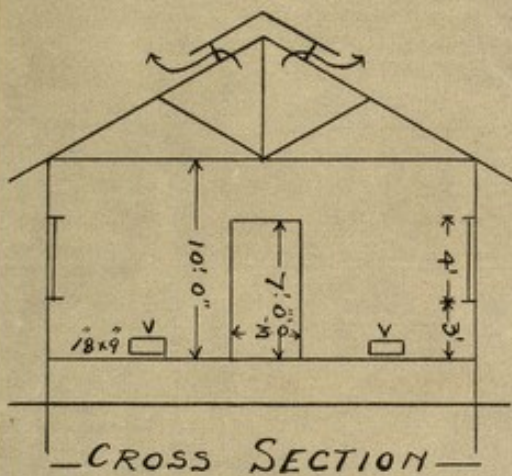
PLAN N^o 6

4089

QUARTER MASTERS' OFFICE, STEWARD'S, UTENSIL AND ISSUING STORES.

(Permanent or Portable)

Notes on plan N^o 1 are applicable to this hut.



Scale 8ft to an Inch

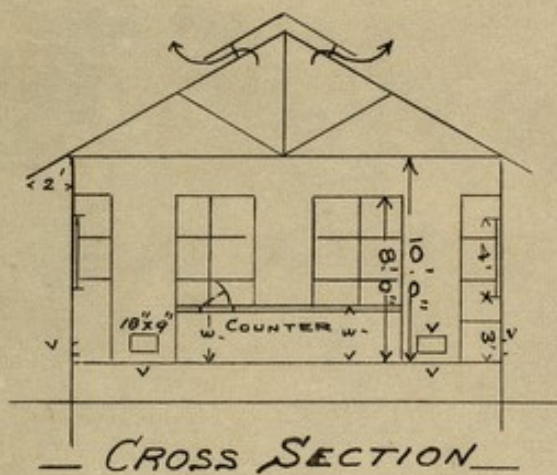
— PLAN N^o 7 —

4688

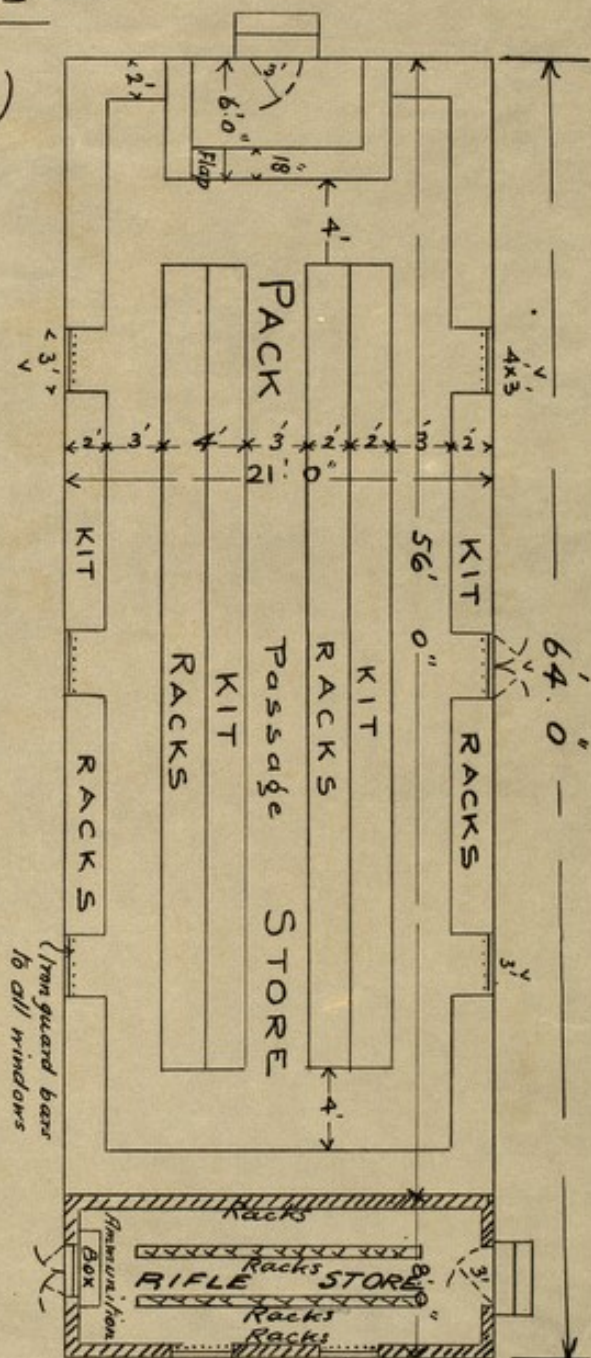
— PACK and RIFLE STORE —

(Permanent or Portable)

Notes on Plan N^o 1 are
applicable to this hut



— CROSS SECTION —



— PLAN —

10 Feet 5 0 10 20 30 40 50 FEET

— Scale 8ft to an Inch. —

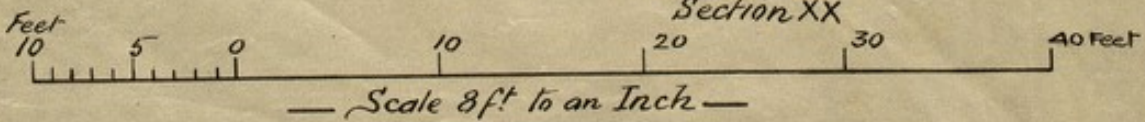
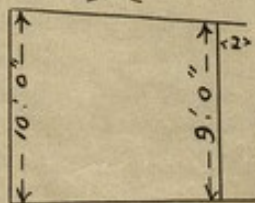
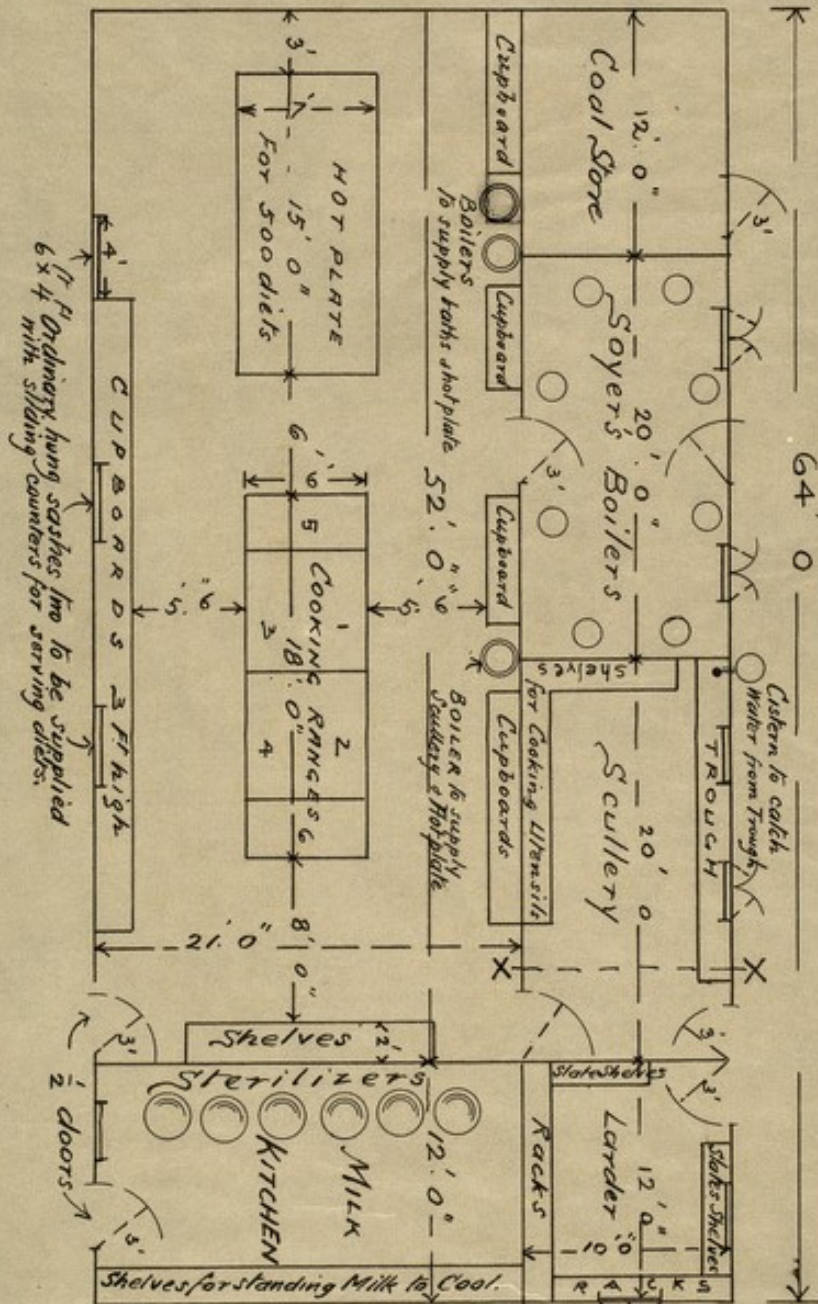
4088

PLAN No. 8

KITCHEN, SCULLERY, BOILER ROOMS &c

Permanent or Portable

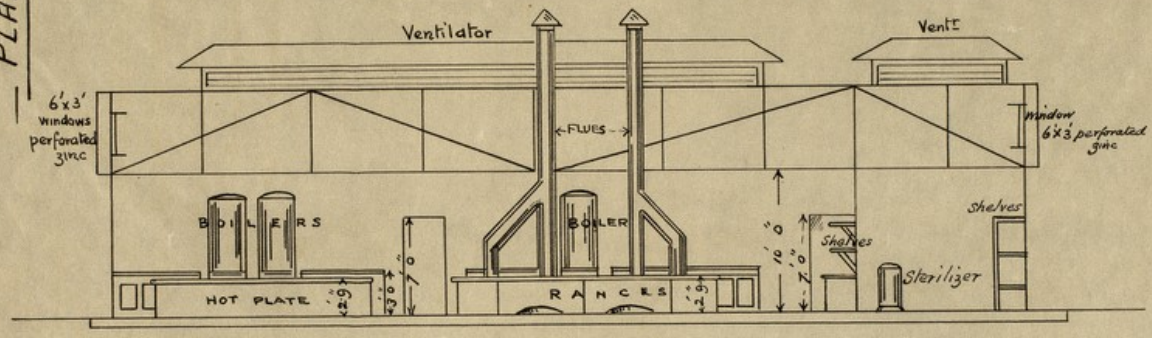
Drainage to be considered locally. Concrete or Brick on Edge Floors.



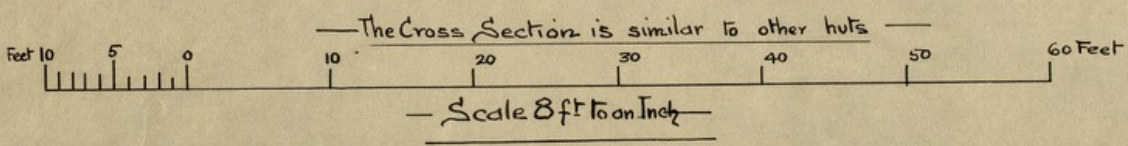
4883

PLAN No 8A

KITCHEN, SCULLERY, BOILER ROOMS &c
Permanent or Portable

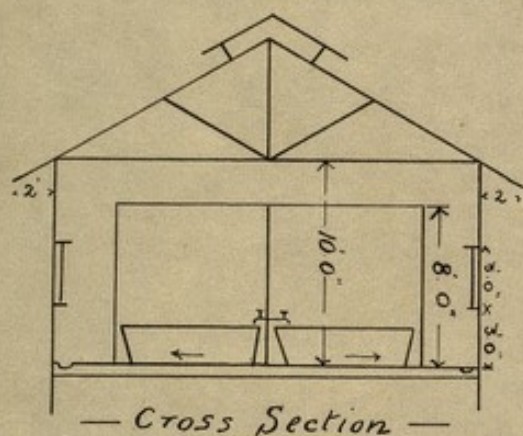


LONGITUDINAL SECTION of PLAN No 8

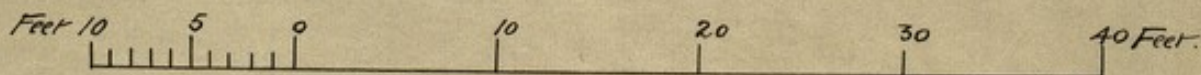


PLAN N^o 8B

PLAN



— Cross Section —

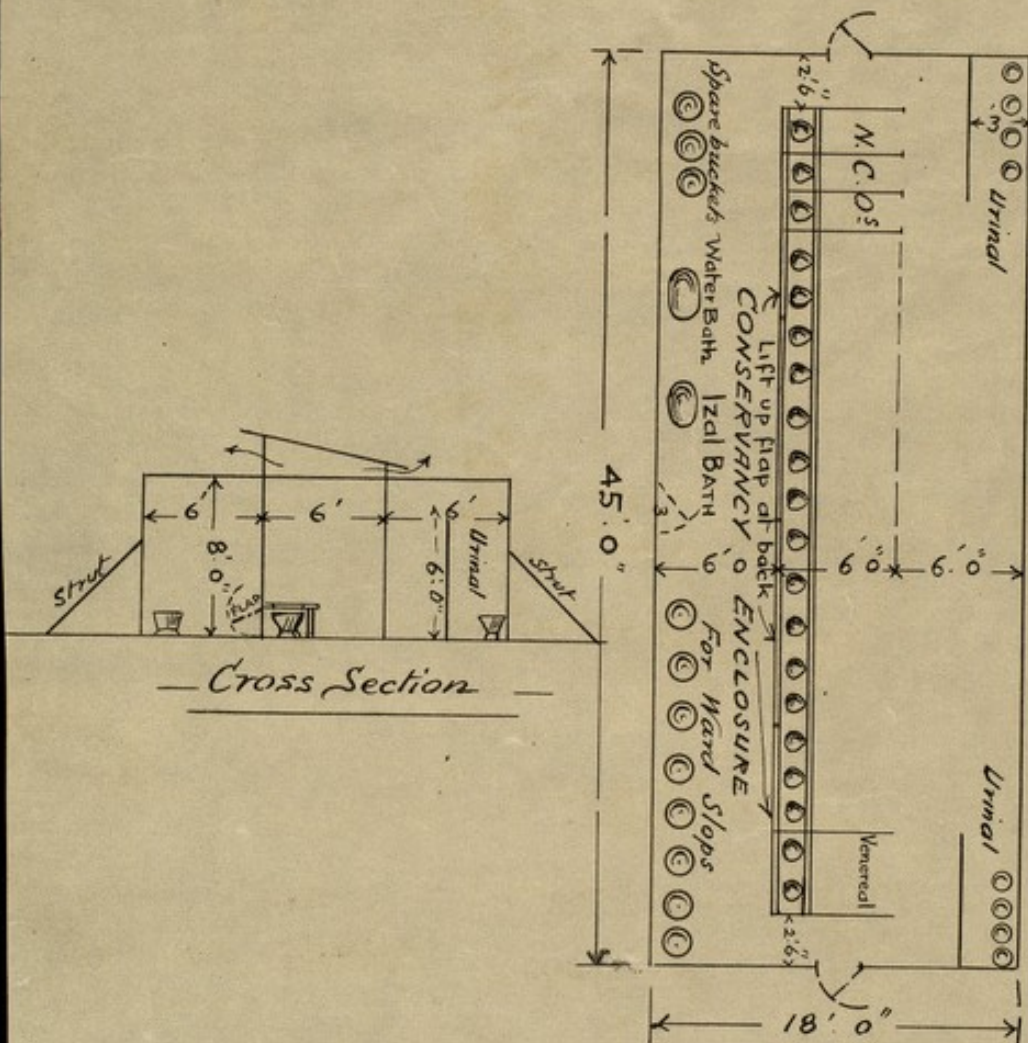


— Scale 8 ft to an inch. —

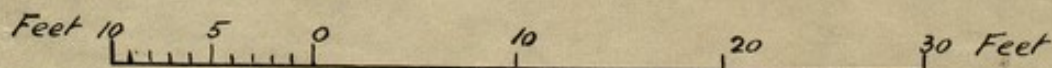
4083

PLAN No 8

HOSPITAL LATRINE



PLAN



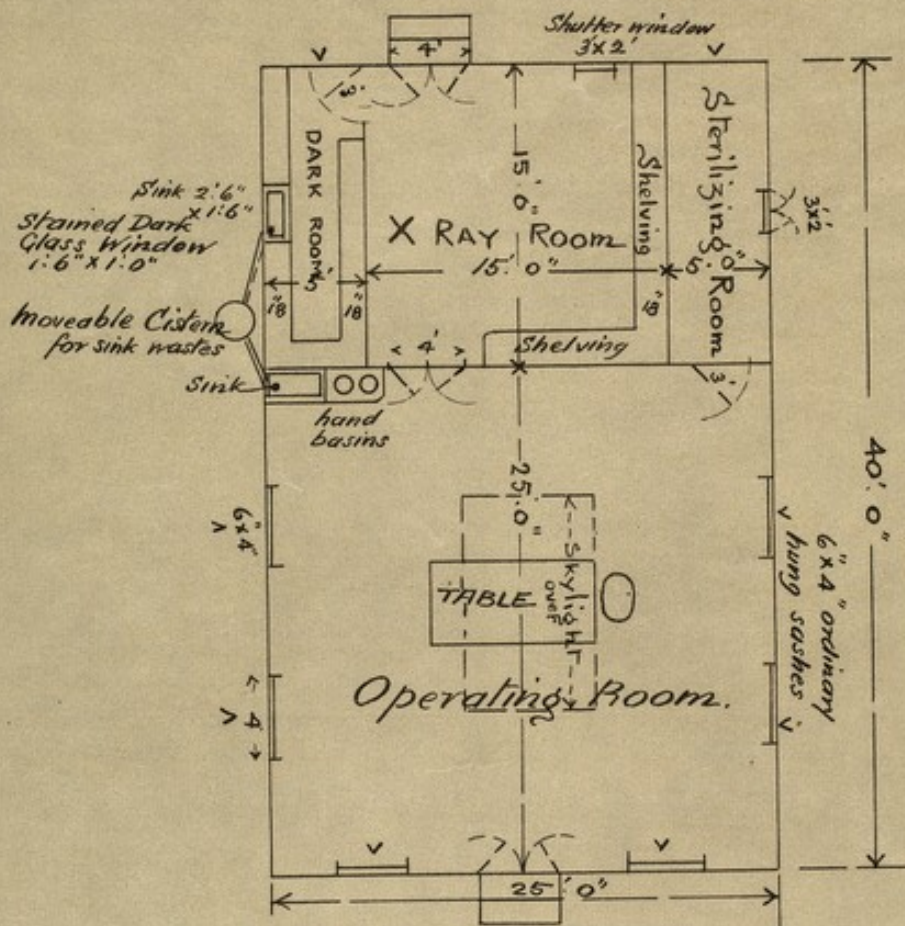
Scale 8ft to an Inch

4683

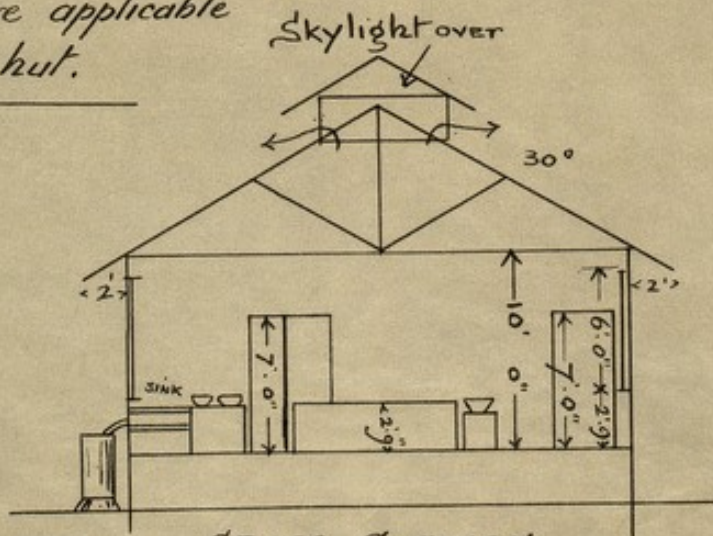
PLAN N^o 10

— OPERATING THEATRE &c —

(Permanent or Portable)



Notes on plan — PLAN —
 No 1 are applicable
 to this hut.



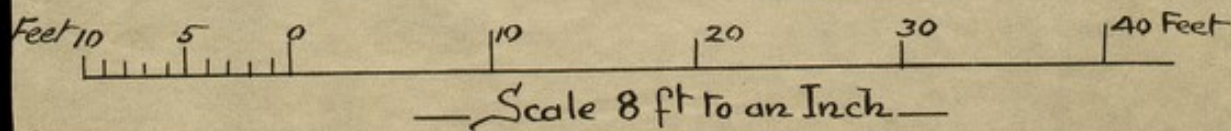
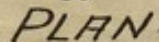
— CROSS SECTION —

Feet 10 5 0 10 20 30 40 feet

— Scale 8 ft to an Inch —

(Permanent or Portable)

LONGITUDINAL SECTION A.B—

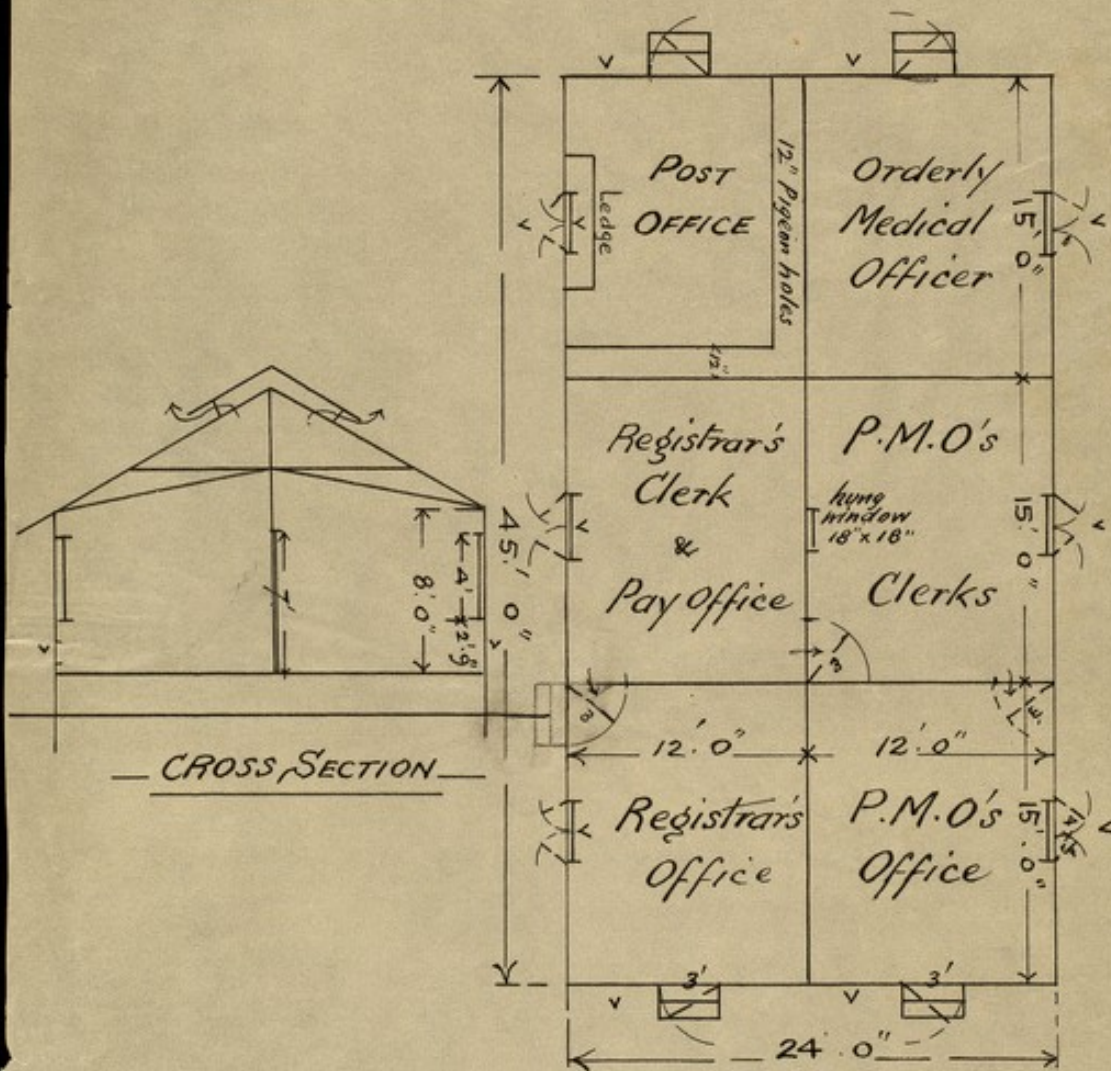


— PLAN N°12 —

— OFFICES &c —

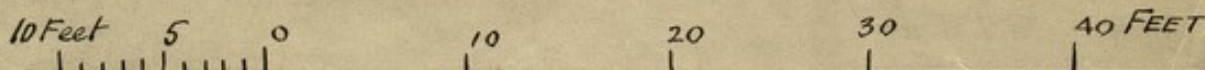
— (Permanent or Portable) —

— Notes on plan N°1 are applicable to this hut. —



— CROSS SECTION —

— PLAN —



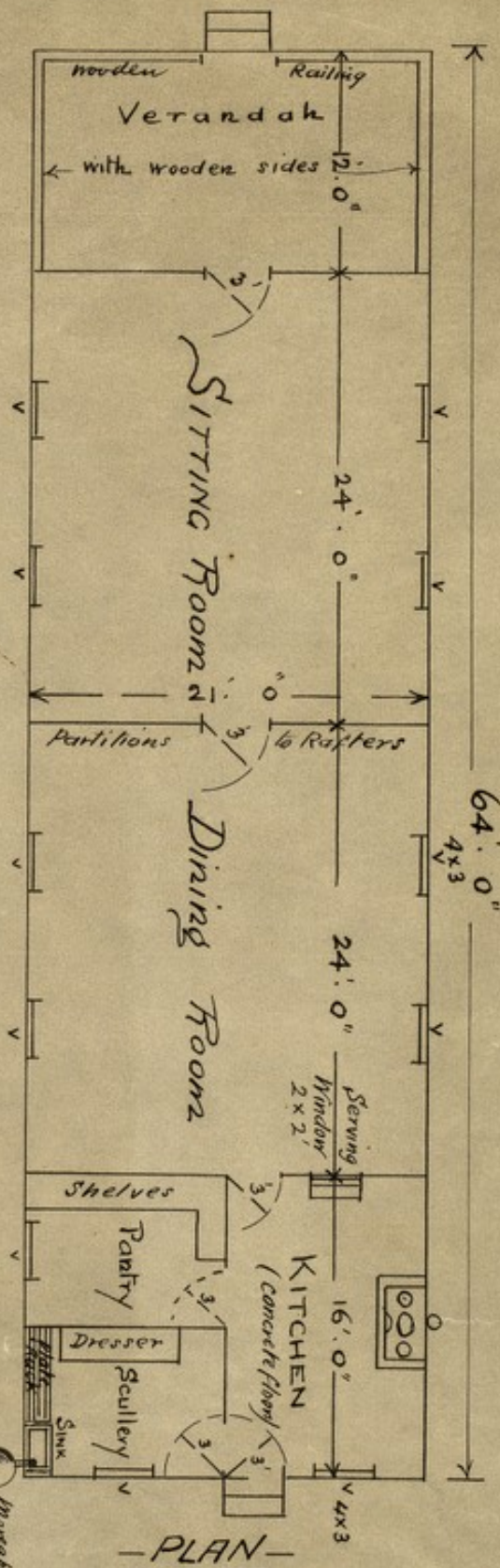
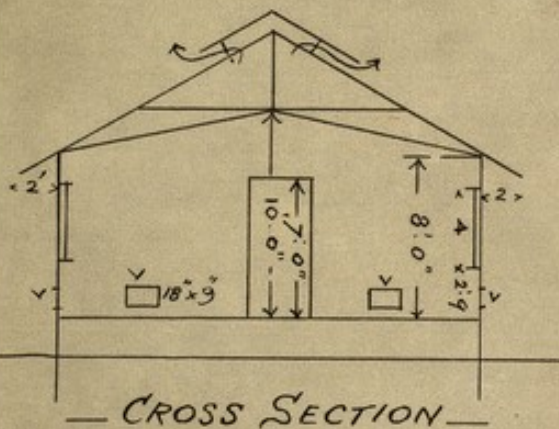
— Scale 8 ft to an Inch. —

PLAN N^o 13

SISTERS LIVING HUT

(Permanent or Portable)

Notes on N^o 1 Plan
are applicable to
this hut.

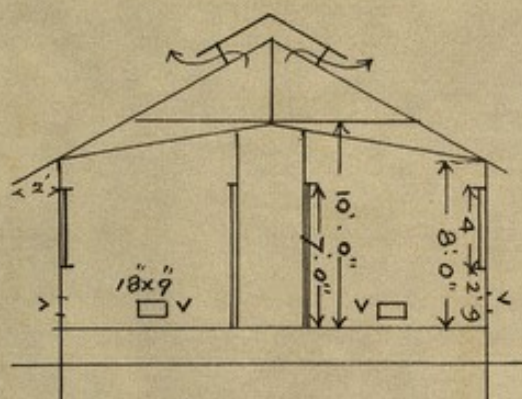


Feet 10 5 0 10 20 30 40 Feet

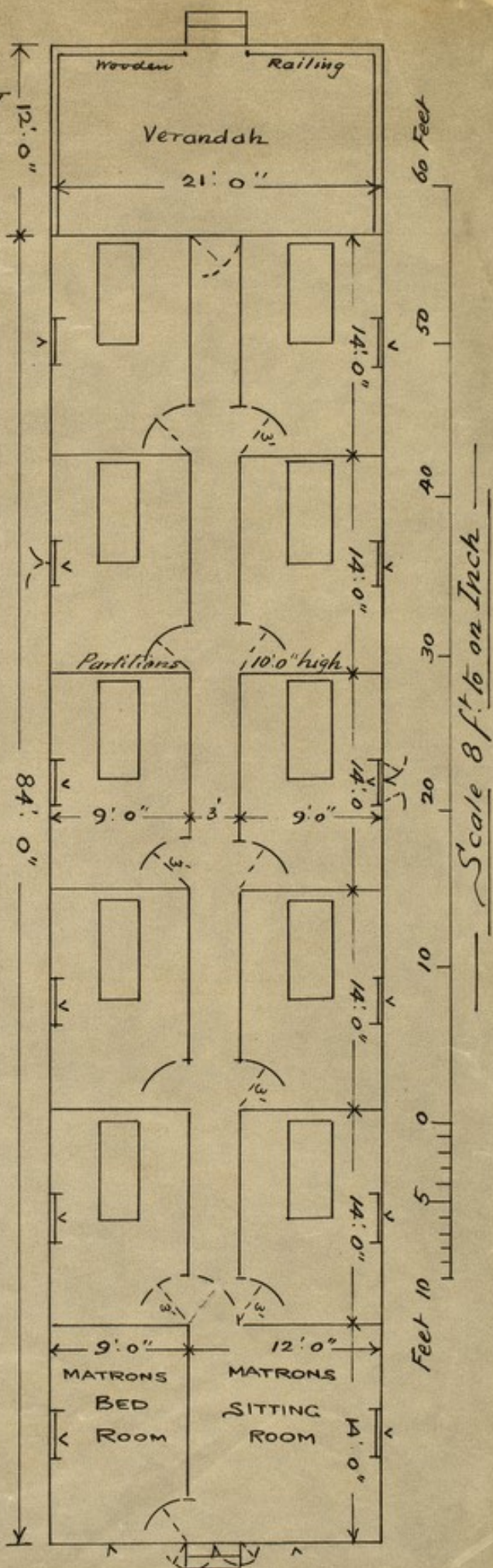
Scale 8 ft. to an Inch

— PLAN N^o 14 —
SISTERS SLEEPING HUT
 (Permanent or Portable)

Notes on Plan N^o 1 are
applicable to this hut

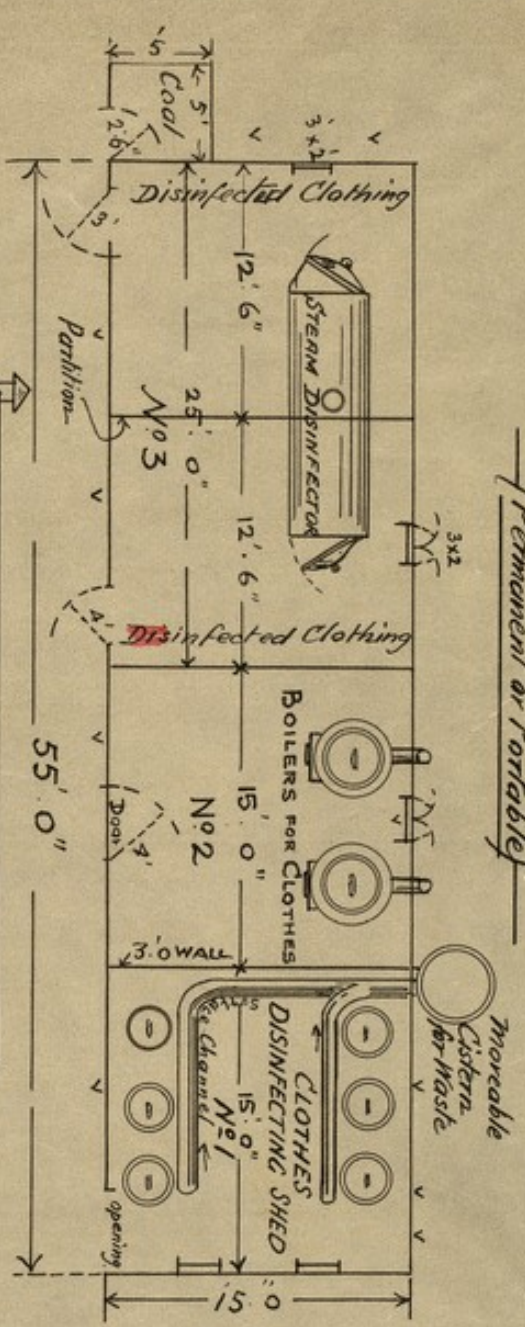


— CROSS SECTION —

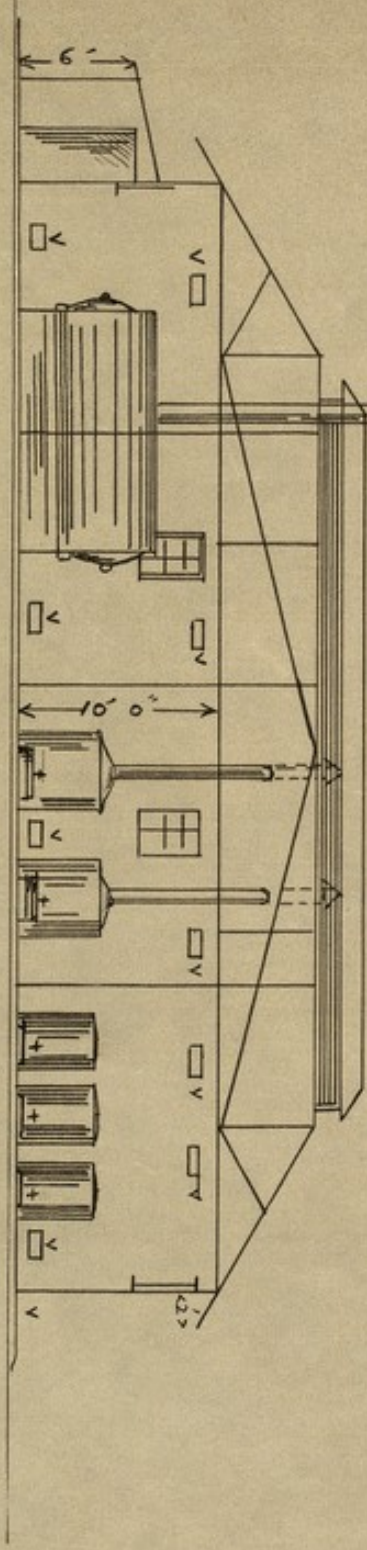


CLOTHES DISINFECTING SHED

Permanent or Portable

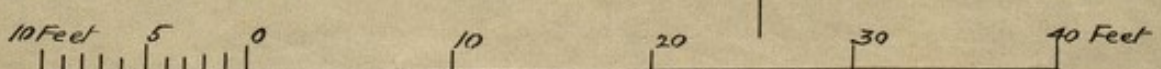


PLAN



LONGITUDINAL SECTION

All Floors Concrete or Brick on Edge



Scale 8 ft to an Inch.

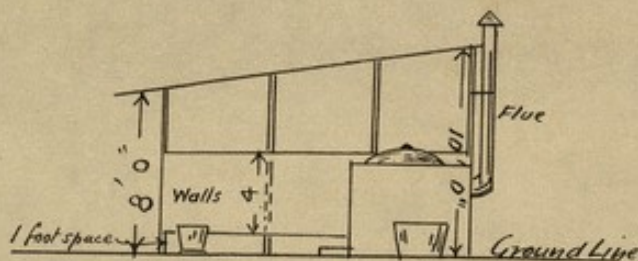
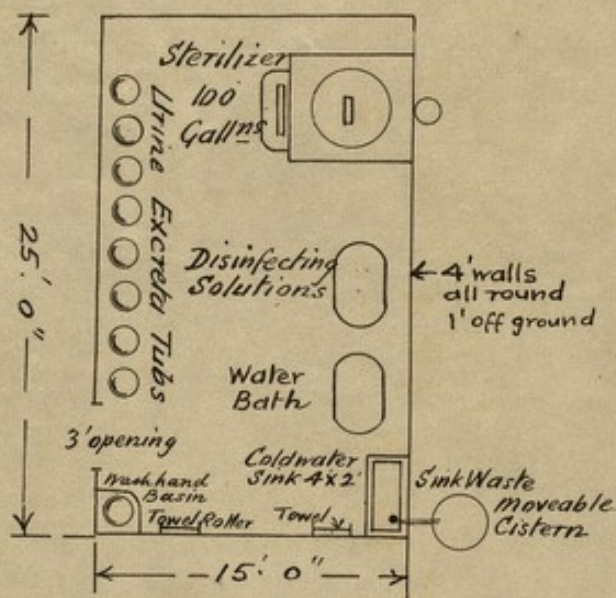
4583

11

— PLAN N^o 16 —

— EXCRETA DISINFECTING HUT —

— Any Drainage to be considered locally —



Feet 10 5 0 10 20 30 Feet

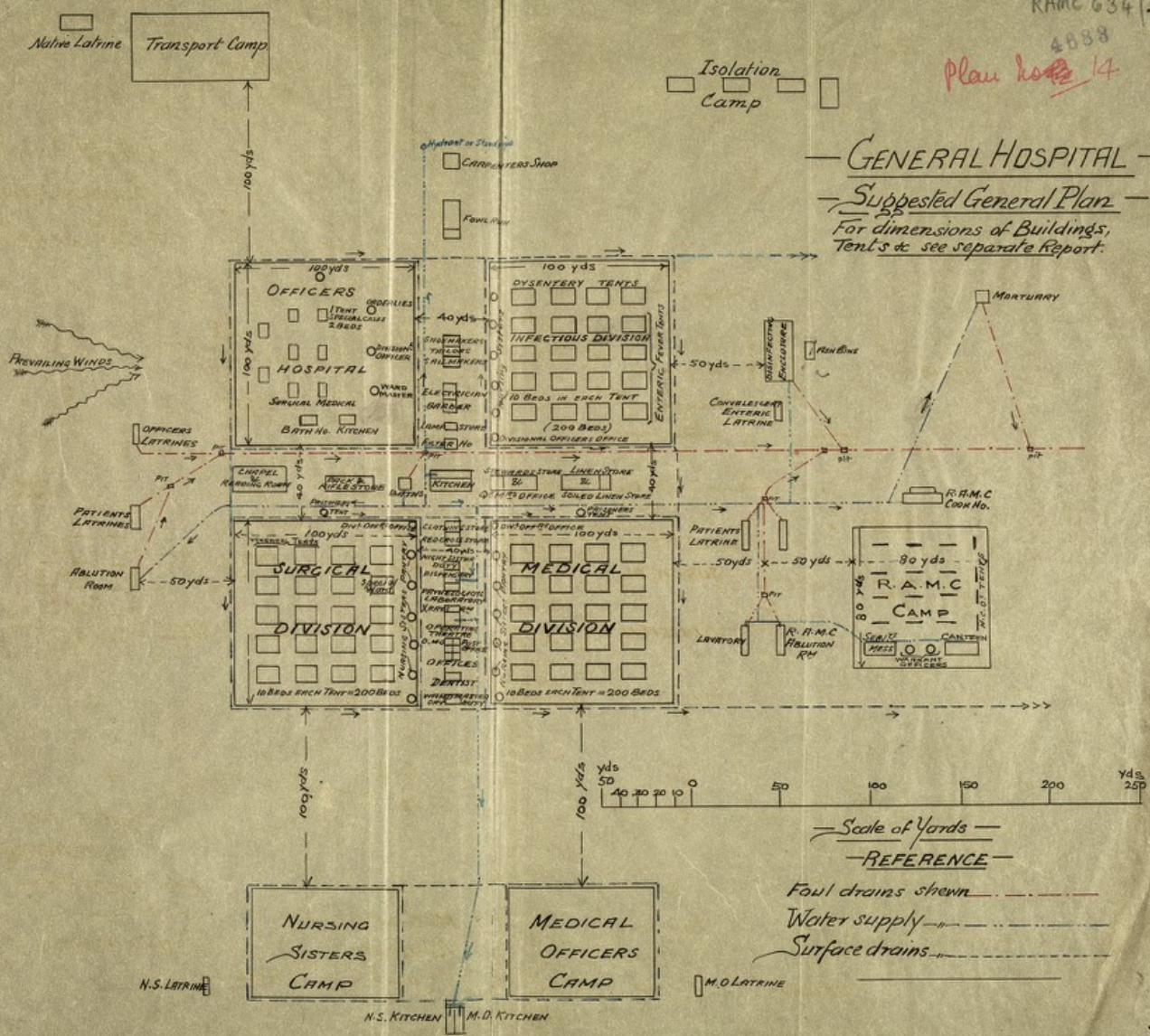
— Scale 8 ft to an Inch —

4888

Plan no 14

GENERAL HOSPITAL

Suggested General Plan
For dimensions of Buildings,
Tents & see separate Report.



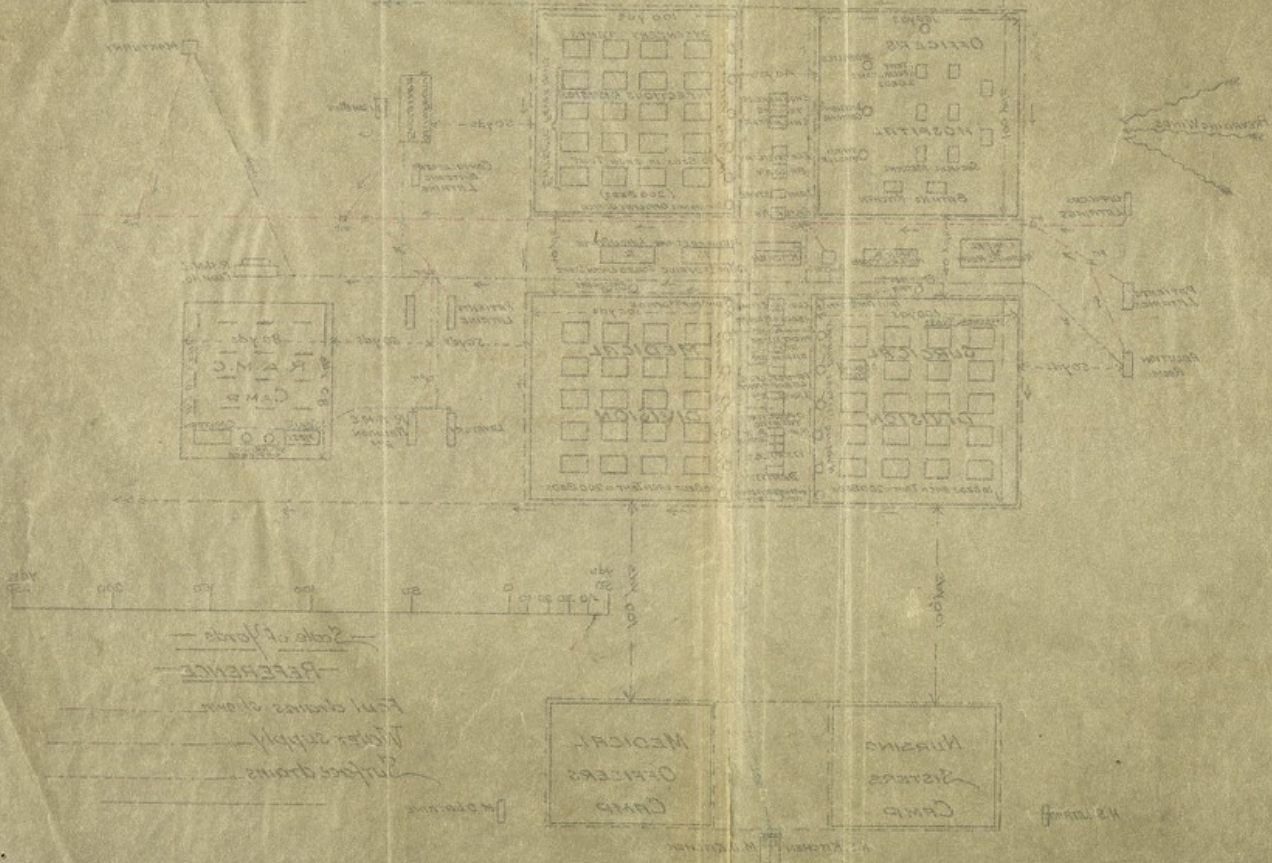
RAMC 634

Isolation
Camp

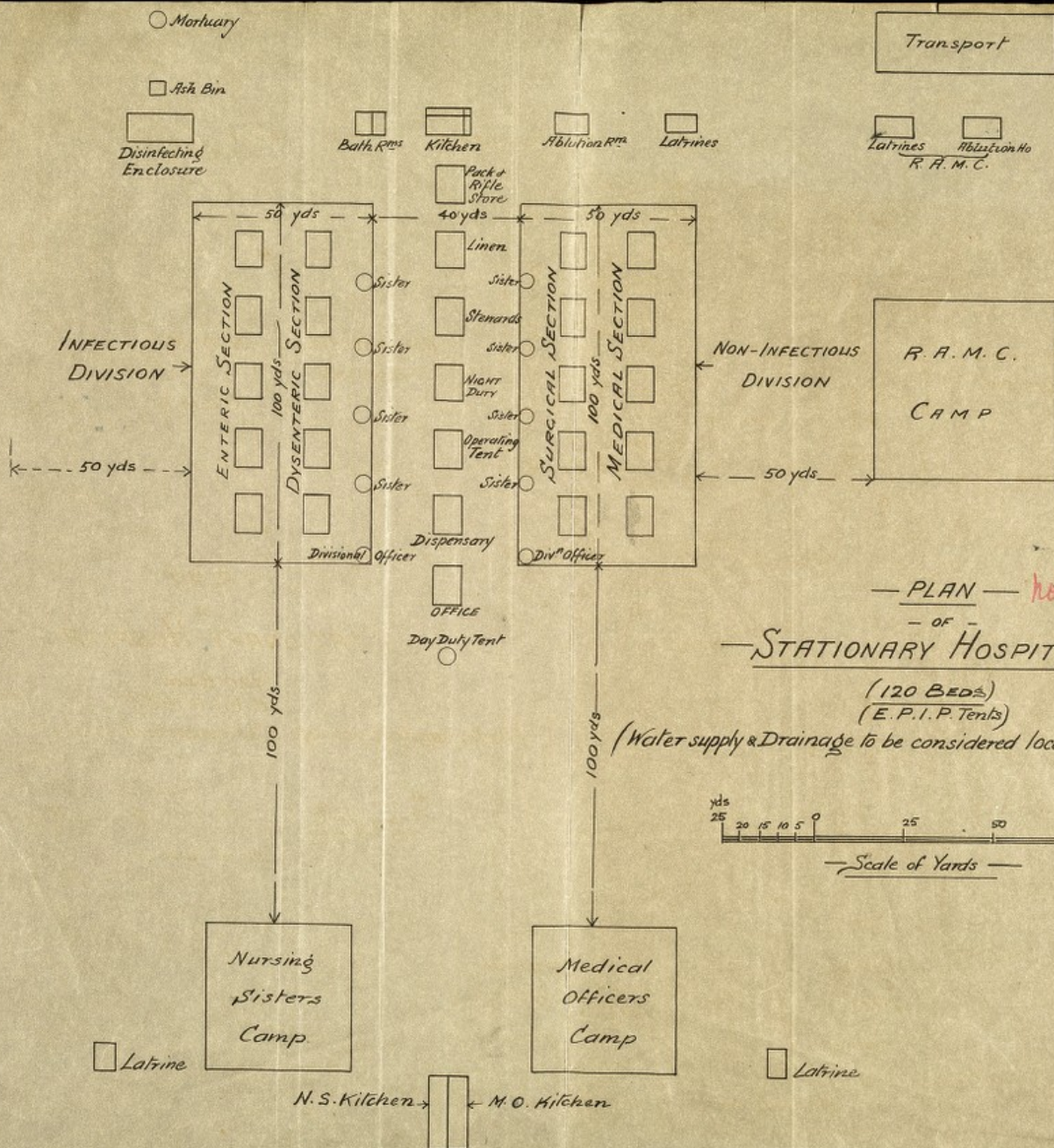
Isolation
Camp

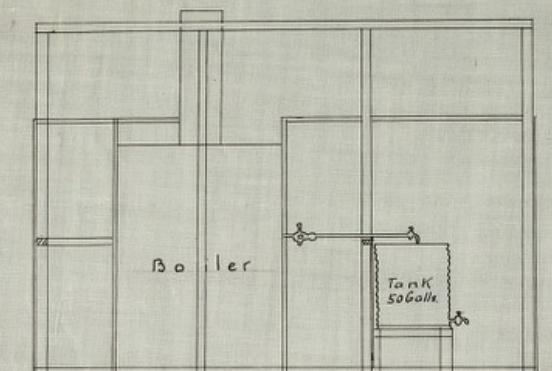
General Hospital

Suggested General Plan
for dimensions of buildings
for use in the hospital

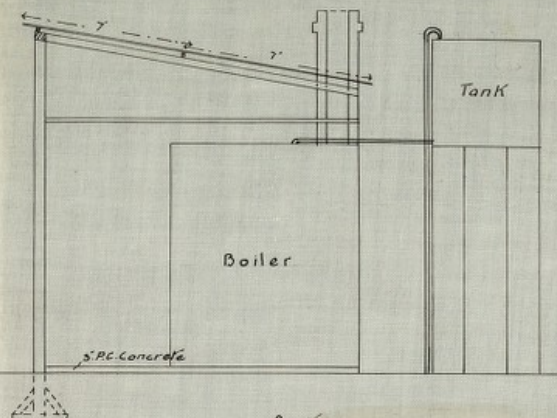


— Isolation Camp —

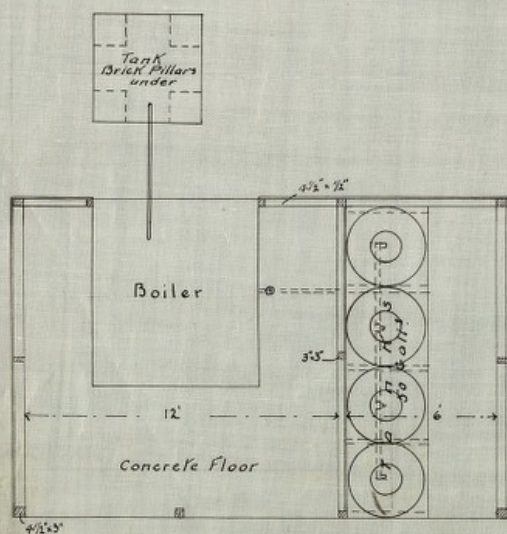




— Elevation —



— Section —

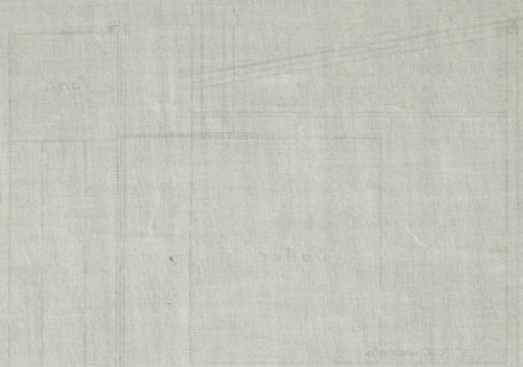


— Plan —

No. 13
 — Plan showing —
 — Filter and Boiler House —
 — of —
 — No. 11 General Hospital —
 — Kimberley —

H. B. Baker
 S. O. Major R. E.
 14. 8. 02

Rmc 634/4



W. J. M.
10. 1. 1944